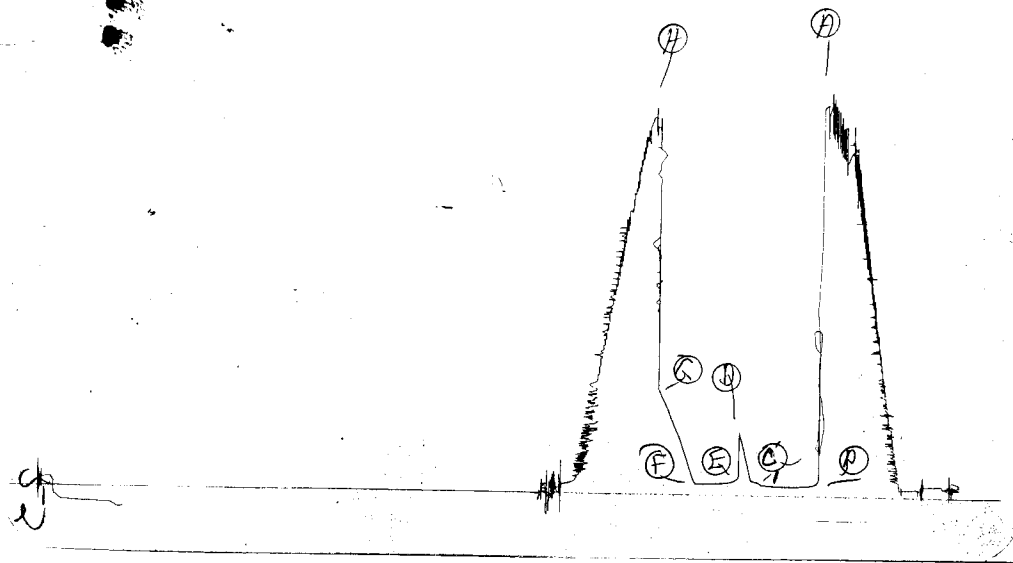


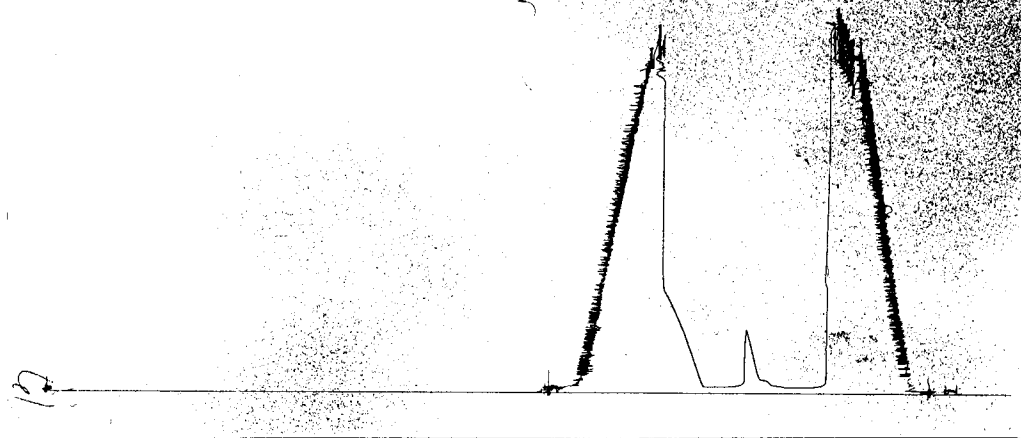
KT 15596  
Z



Inside Recorder

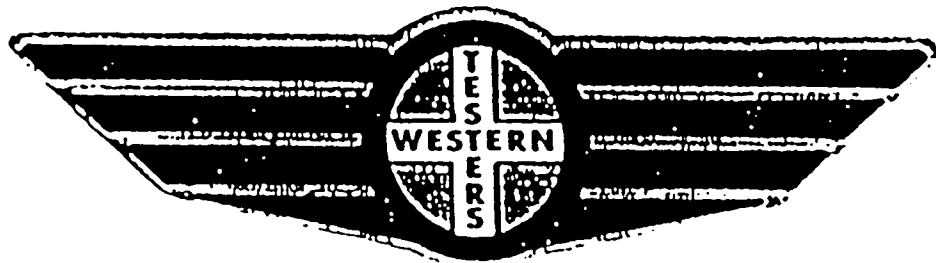
KT 15596

O



Outside Recorder

# FORMATION TEST REPORT



Home Office:

Wichita, Kansas 67201

P.O. Box 1599

Phone (316) 262-5861

WESTERN TESTING CO. INC.  
SUBSURFACE PRESSURE SURVEY

DATE : 2/14/90 TICKET : 15596  
CUSTOMER : JAY BOY OIL INC. LEASE : NICHOLSON  
WELL : #1 TEST: 1 GEOLOGIST : KEN GREENWOOD  
ELEVATION : 2074 KB FORMATION : ARBUCKLE  
SECTION : 24 TOWNSHIP : 20S  
RANGE : 16W COUNTY : PAWNEE STATE : KANSAS  
GAUGE SN# : 13552 RANGE : 4050 CLOCK : 12

INTERVAL FROM : 3775 TO : 3783 TOTAL DEPTH : 3783  
DEPTH OF SELECTIVE ZONE :  
PACKER DEPTH : 3770 SIZE : 6.63  
PACKER DEPTH : 3775 SIZE : 6.63  
PACKER DEPTH : SIZE :  
PACKER DEPTH : SIZE :

DRILLING CON. : ALLEN DRILLING RIG #3  
MUD TYPE : CHEMICAL VISCOSITY : 47  
WEIGHT : 9.5 WATER LOSS (CC) : 10.4  
CHLORIDES (PPM) : 8000  
JARS-MAKE : SERIAL NUMBER :  
DID WELL FLOW ? : NO REVERSED OUT ? : NO

DRILL COLLAR LENGTH : 0 FT I.D. inch : 0.00  
WEIGHT PIPE LENGTH : 0 FT I.D. inch : 0.00  
DRILL PIPE LENGTH : 3750 FT I.D. inch : 3.80  
TEST TOOL LENGTH : 25 FT TOOL SIZE : 5.50  
ANCHOR LENGTH : 8 FT ANCHOR SIZE : 5.50  
SURFACE CHOKE SIZE : .75 IN BOTTOM CHOKE SIZE : .75  
MAIN HOLE SIZE : 7.875 IN TOOL JOINT SIZE : 4.5 FH

BLOW COMMENT #1 : STRONG BLOW THROUGHOUT FLOW PERIODS  
BLOW COMMENT #2 :  
BLOW COMMENT #3 :  
BLOW COMMENT #4 :

RECOVERED : 30 FT OF: DRILLING MUD

Total Barrels Fluid = 0.42  
Total Fluid Prod Rate = 10.10 BFPD  
Indicated Wtr Rate = 0.10 BWPD

REMARK 1 :  
REMARK 2 :  
REMARK 3 :  
REMARK 4 :

SET PACKER(S) :	4:40 PM	TIME STARTED OFF BOTTOM :	6:40 PM
WELL TEMPERATURE :	103		
INITIAL HYDROSTATIC PRESSURE		(A)	2048
INITIAL FLOW PERIOD MIN:	30	(B)	53 PSI TO (C) : 53
INITIAL CLOSED IN PERIOD MIN:	30	(D)	331
FINAL FLOW PERIOD MIN:	30	(E)	63 PSI TO (F) : 63
FINAL CLOSED IN PERIOD MIN:	30	(G)	557
FINAL HYDROSTATIC PRESSURE		(H)	1977

WESTERN TESTING CO. INC.  
WICHITA-KANSAS

Pressure Transient Report  
-----

COMPANY : JAY BOY OIL INC.  
RIG : PAWNEE-KANSAS  
FIELD : NICHOLSON  
WELL : #1  
DATE : 2/14/90  
GAUGE NO : 13552

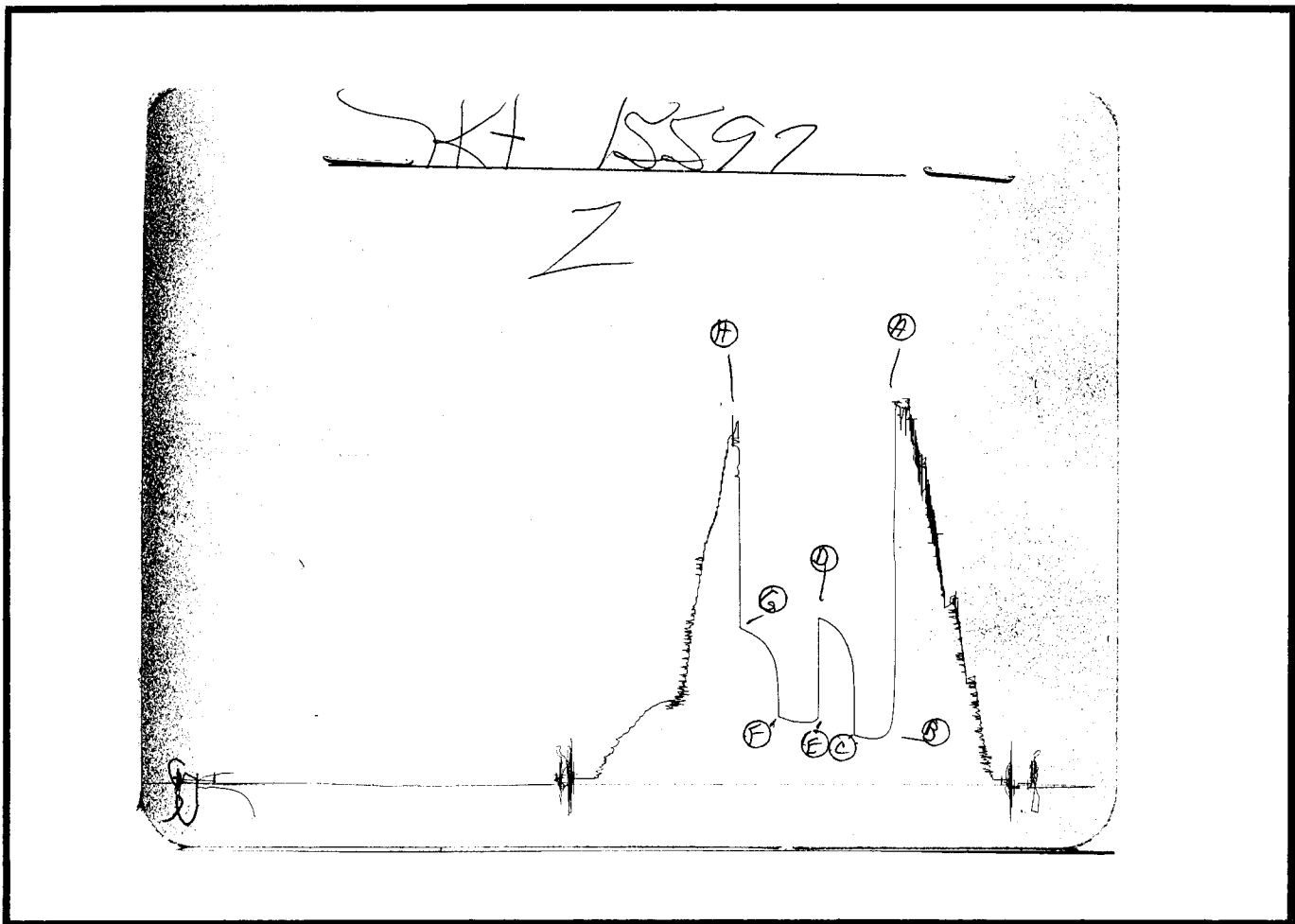
OPERATIONAL COMMENTS

COMPANY : JAY BOY OIL INC.  
WELL : #1  
GAUGE # : 13552  
DATE : 14/ 2/90

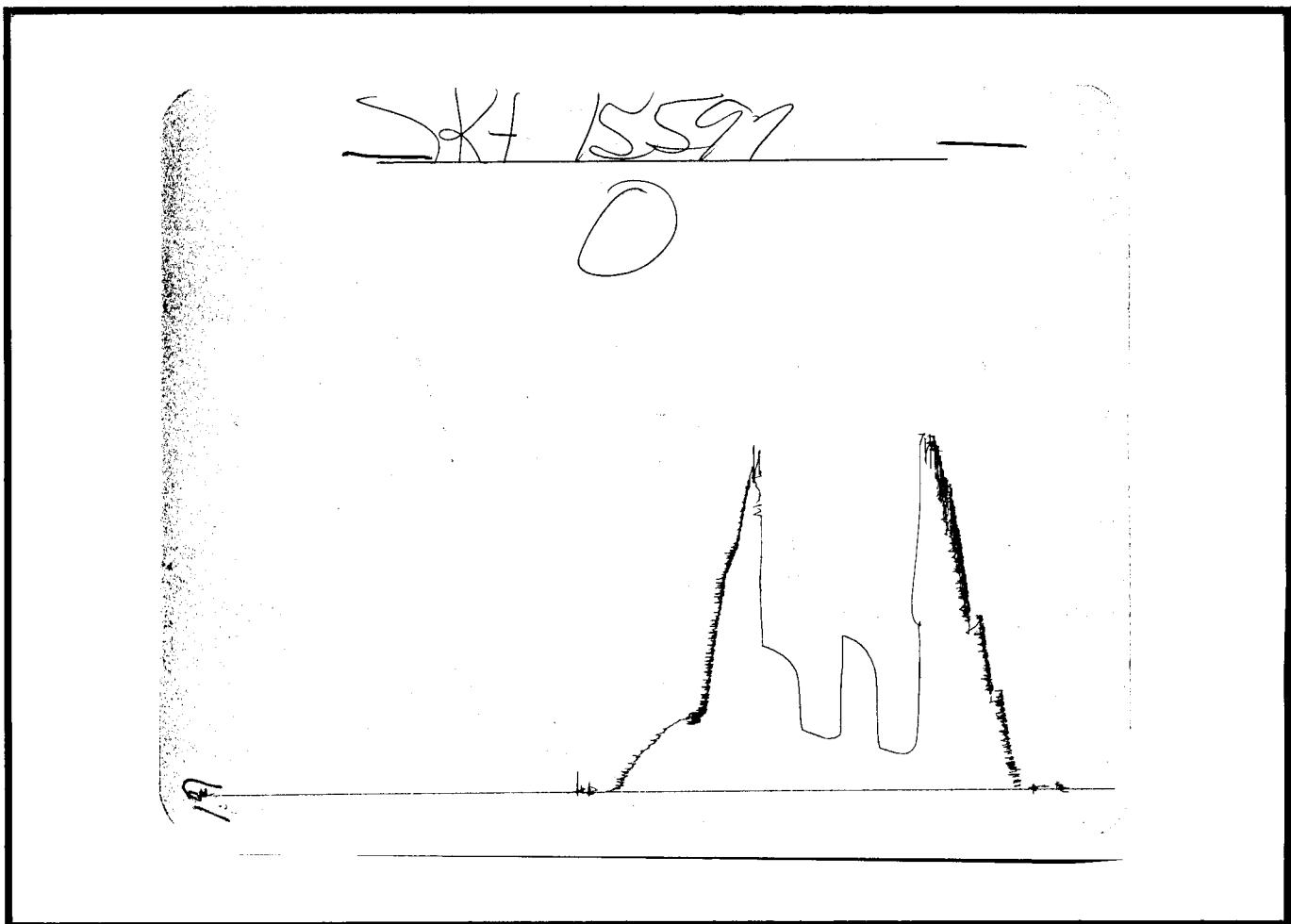
FIELD : NICHOLSON  
JOB # : 15596  
DEPTH : 3783  
TEST :

DATA No.	REAL TIME HR:MN:SS	ELAPSE TIME DELTA HOURS	PRESSURE PSIG	TEMP DEG F	DELTA P Pi-P(i-1)
INITIAL FLOW PERIOD					
2	4:40: 0	0.000	53.000	103.00	0.000
3	4:44:59	0.083	53.000	103.00	0.000
4	4:50: 0	0.167	53.000	103.00	0.000
5	4:55: 0	0.250	53.000	103.00	0.000
6	4:59:59	0.333	53.000	103.00	0.000
7	5: 5: 0	0.417	53.000	103.00	0.000
8	5:10: 0	0.500	53.000	103.00	0.000
INITIAL SHUT-IN PERIOD					
9	5:13: 0	0.550	53.000	103.00	0.000
10	5:16: 0	0.600	55.000	103.00	2.000
11	5:19: 0	0.650	56.000	103.00	1.000
12	5:22: 0	0.700	57.000	103.00	1.000
13	5:25: 0	0.750	70.000	103.00	13.000
14	5:28: 0	0.800	75.000	103.00	5.000
15	5:31: 0	0.850	102.000	103.00	27.000
16	5:34: 0	0.900	183.000	103.00	81.000
17	5:37: 0	0.950	265.000	103.00	82.000
18	5:40: 0	1.000	331.000	103.00	66.000
FINAL FLOW PERIOD					
19	5:41: 0	1.017	63.000	103.00	-268.000
20	5:44:59	1.083	63.000	103.00	0.000
21	5:50: 0	1.167	63.000	103.00	0.000
22	5:55: 0	1.250	63.000	103.00	0.000
23	5:59:59	1.333	63.000	103.00	0.000
24	6: 5: 0	1.417	63.000	103.00	0.000
25	6:10: 0	1.500	63.000	103.00	0.000
FINAL SHUT-IN PERIOD					
26	6:13: 0	1.550	77.000	103.00	14.000
27	6:16: 0	1.600	132.000	103.00	55.000
28	6:19: 0	1.650	200.000	103.00	68.000
29	6:22: 0	1.700	260.000	103.00	60.000
30	6:25: 0	1.750	313.000	103.00	53.000
31	6:28: 0	1.800	363.000	103.00	50.000
32	6:31: 0	1.850	411.000	103.00	48.000
33	6:34: 0	1.900	462.000	103.00	51.000
34	6:37: 0	1.950	509.000	103.00	47.000
35	6:40: 0	2.000	557.000	103.00	48.000

WESTERN TESTING CO. INC.

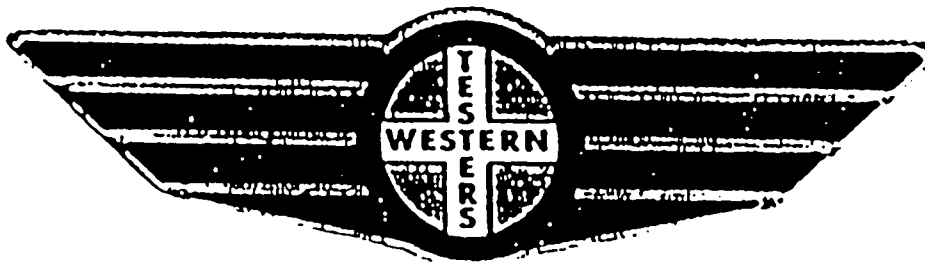


Inside Recorder



Outside Recorder

# FORMATION TEST REPORT



Home Office:

Wichita, Kansas 67201

P.O. Box 1599

Phone (316) 262-5861

WESTERN TESTING CO. INC.  
SUBSURFACE PRESSURE SURVEY

DATE : 2/15/90 TICKET : 15597  
CUSTOMER : JAY BOY OIL INC. LEASE : NICHOLSON  
WELL : #1 TEST: 2 GEOLOGIST : KEN GREENWOOD  
ELEVATION : 2074 FORMATION : ARBUCKLE  
SECTION : 24 TOWNSHIP : 20S  
RANGE : 16W COUNTY : PAWNEE STATE : KANSAS  
GAUGE SN# : 13552 RANGE : 4050 CLOCK : 12

INTERVAL FROM : 3783 TO : 3796 TOTAL DEPTH : 3796  
DEPTH OF SELECTIVE ZONE :  
PACKER DEPTH : 3778 SIZE : 6.63  
PACKER DEPTH : 3783 SIZE : 6.63  
PACKER DEPTH : SIZE :  
PACKER DEPTH : SIZE :

DRILLING CON. : ALLEN DRILLING RIG #3  
MUD TYPE : CHEMICAL VISCOSITY : 47  
WEIGHT : 9.5 WATER LOSS (CC) : 10.4  
CHLORIDES (PPM) : 8000  
JARS-MAKE : SERIAL NUMBER :  
DID WELL FLOW ? : YES REVERSED OUT ? : NO

DRILL COLLAR LENGTH : 0 FT I.D. inch : 0.00  
WEIGHT PIPE LENGTH : 0 FT I.D. inch : 0.00  
DRILL PIPE LENGTH : 3762 FT I.D. inch : 3.80  
TEST TOOL LENGTH : 21 FT TOOL SIZE : 5.50  
ANCHOR LENGTH : 13 FT ANCHOR SIZE : 5.50  
SURFACE CHOKE SIZE : .75 IN BOTTOM CHOKE SIZE : .75  
MAIN HOLE SIZE : 7.875 IN TOOL JOINT SIZE : 4.5 FH

BLOW COMMENT #1 : INITIAL FLOW PERIODS-STRONG BLOW THROUGHOUT-  
BLOW COMMENT #2 : GAS TO SURFACE IN 3 MINUTES-SEE FLOW CHART  
BLOW COMMENT #3 : FINAL FLOW PERIOD-STRONG BLOW THROUGHOUT  
BLOW COMMENT #4 :

RECOVERED : 510 FT OF: CLEAN  
RECOVERED : 0 FT OF: GASSY OIL 26 GRAVITY  
RECOVERED : 60 FT OF: OIL & GAS CUT MUDDY WATER 10% OIL  
RECOVERED : 300 FT OF: SALT WATER  
RECOVERED : 0 FT OF: CHLORIDES 28000 PPM

Total Barrels Fluid = 12.20  
Total Fluid Prod Rate = 292.87 BFPD  
Indicated Oil Rate = 173.70 BOPD  
Indicated Wtr Rate = 111.09 BWPD  
Corrected Oil Rate = 101.25 BOPD  
Corrected Wtr Rate = 64.75 BWPD

REMARK 1 :  
REMARK 2 :  
REMARK 3 :  
REMARK 4 :

SET PACKER(S) : 3:30 AM                      TIME STARTED OFF BOTTOM : 5:30 AM  
WELL TEMPERATURE : 104  
INITIAL HYDROSTATIC PRESSURE (A) 2093  
INITIAL FLOW PERIOD MIN: 30 (B) 265 PSI TO (C) : 282  
INITIAL CLOSED IN PERIOD MIN: 30 (D) 934  
FINAL FLOW PERIOD MIN: 30 (E) 352 PSI TO (F) : 382  
FINAL CLOSED IN PERIOD MIN: 30 (G) 877  
FINAL HYDROSTATIC PRESSURE (H) 2017

WESTERN TESTING CO. INC.  
WICHITA-KANSAS

Pressure Transient Report  
-----

COMPANY : JAY BOY OIL INC.  
RIG : PAWNEE-KANSAS  
FIELD : NICHOLSON  
WELL : #1  
DATE : 2/15/90  
GAUGE NO : 13552

OPERATIONAL COMMENTS

COMPANY : JAY BOY OIL INC.  
WELL : #1  
GAUGE # : 13552  
DATE : 15/ 2/90

FIELD : NICHOLSON  
JOB # : 15597  
DEPTH : 3796  
TEST :

DATA No.	REAL TIME HR:MN:SS	ELAPSE TIME DELTA HOURS	PRESSURE PSIG	TEMP DEG F	DELTA P Pi-P(i-1)
INITIAL FLOW PERIOD					
2	3:30: 0	0.000	265.000	104.00	0.000
3	3:34:59	0.083	265.000	104.00	0.000
4	3:40: 0	0.167	265.000	104.00	0.000
5	3:45: 0	0.250	265.000	104.00	0.000
6	3:49:59	0.333	266.000	104.00	1.000
7	3:55: 0	0.417	272.000	104.00	6.000
8	4: 0: 0	0.500	282.000	104.00	10.000
INITIAL SHUT-IN PERIOD					
9	4: 3: 0	0.550	694.000	104.00	412.000
10	4: 6: 0	0.600	762.000	104.00	68.000
11	4: 9: 0	0.650	809.000	104.00	47.000
12	4:12: 0	0.700	847.000	104.00	38.000
13	4:15: 0	0.750	869.000	104.00	22.000
14	4:18: 0	0.800	889.000	104.00	20.000
15	4:21: 0	0.850	904.000	104.00	15.000
16	4:24: 0	0.900	918.000	104.00	14.000
17	4:27: 0	0.950	927.000	104.00	9.000
18	4:30: 0	1.000	934.000	104.00	7.000
FINAL FLOW PERIOD					
19	4:31: 0	1.017	352.000	104.00	-582.000
20	4:34:59	1.083	352.000	104.00	0.000
21	4:40: 0	1.167	352.000	104.00	0.000
22	4:45: 0	1.250	355.000	104.00	3.000
23	4:49:59	1.333	360.000	104.00	5.000
24	4:55: 0	1.417	372.000	104.00	12.000
25	5: 0: 0	1.500	382.000	104.00	10.000
FINAL SHUT-IN PERIOD					
26	5: 3: 0	1.550	659.000	104.00	277.000
27	5: 6: 0	1.600	724.000	104.00	65.000
28	5: 9: 0	1.650	764.000	104.00	40.000
29	5:12: 0	1.700	794.000	104.00	30.000
30	5:15: 0	1.750	812.000	104.00	18.000
31	5:18: 0	1.800	830.000	104.00	18.000
32	5:21: 0	1.850	841.000	104.00	11.000
33	5:24: 0	1.900	852.000	104.00	11.000
34	5:27: 0	1.950	862.000	104.00	10.000
35	5:30: 0	2.000	877.000	104.00	15.000

WESTERN TESTING CO. INC.

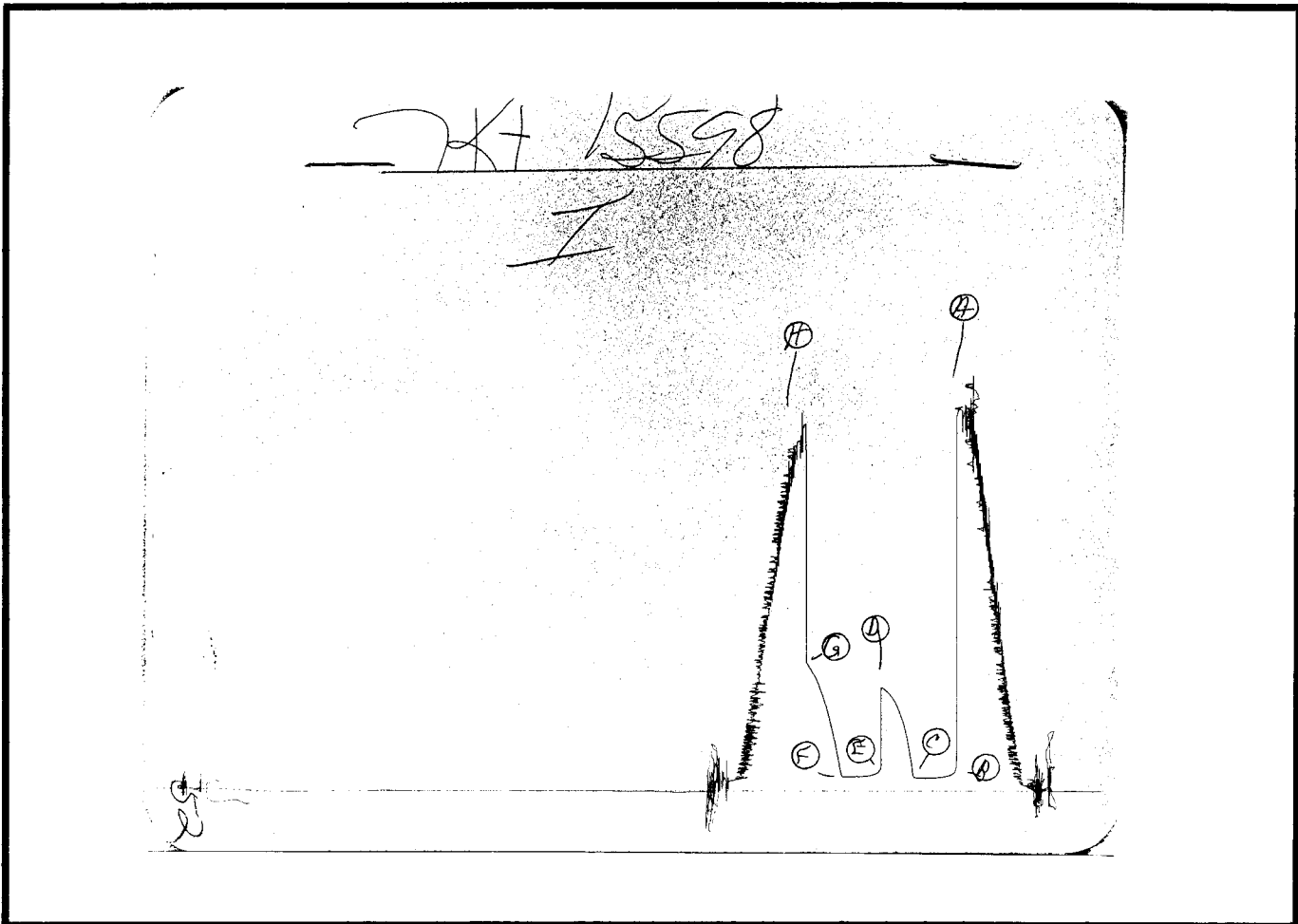
GAS FLOW REPORT

Date : 2/15/90	Ticket # : 15597
Customer : JAY BOY OIL INC.	Lease : NICHOLSON
Well : #1            Test : 2	Geologist : KEN GREENWOOD
Elevation (KB) : 2074 KB	Formation : ARBUCKLE
Section : 24	Township : 20S
Range : 16W	County : PAWNEE
Gauge SN # : 13552	State : KANSAS
	Range : 4050
	Clock : 12

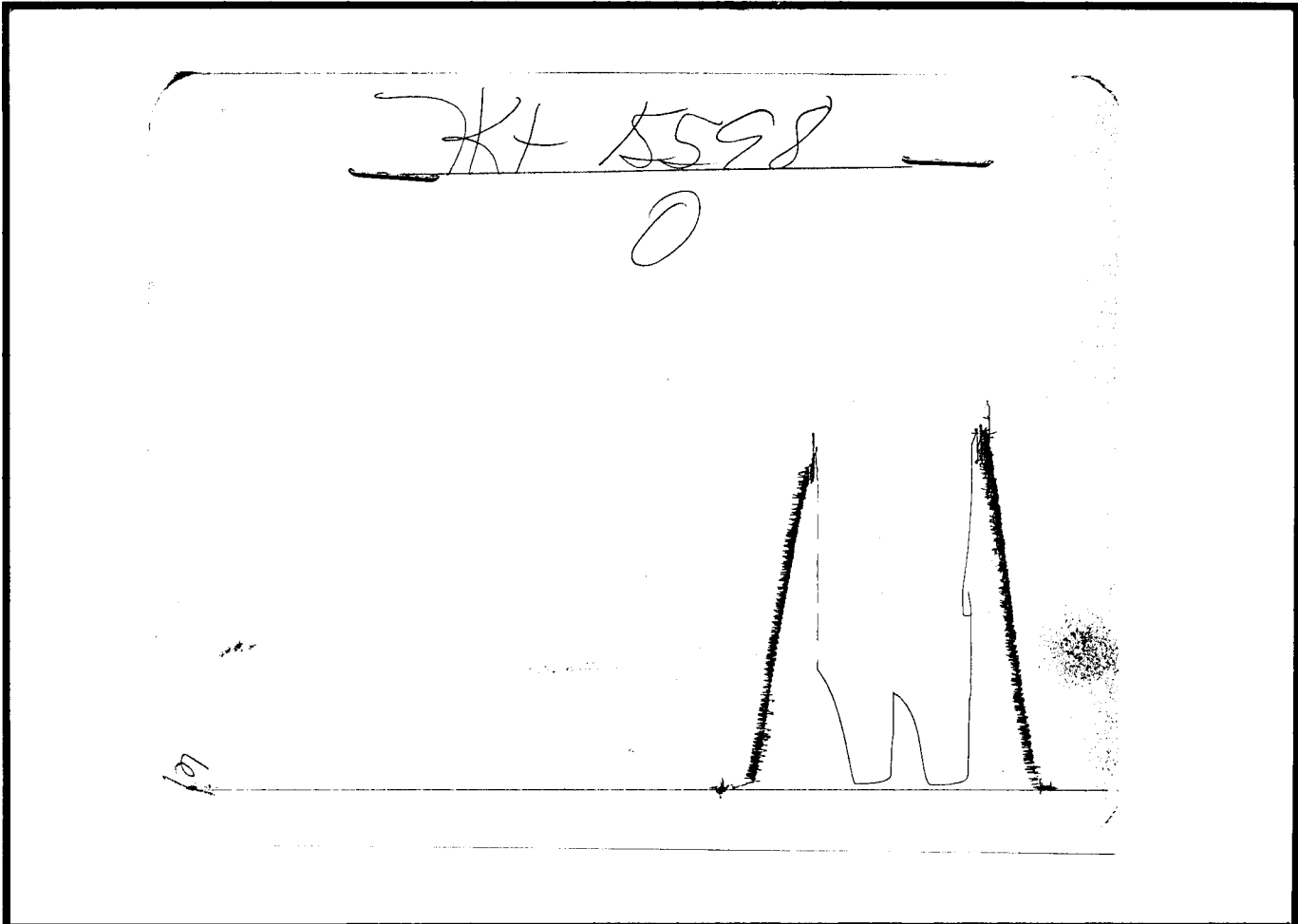
TIME GAUGE (MIN)	TESTER TYPE	ORFICE SIZE	PRESSURE (PSI)	FLOW DESCRIPTION
PRE FLOW =====				
5	MERLA	1 1/2	18"WTR	295000 CFPD
10	MERLA	1 1/2	14"WTR	260000 CFPD
20	MERLA	1 1/2	10"WTR	220000 CFPD
30	MERLA	1 1/2	8" WTR	197000 CFPD

SECOND FLOW =====				
5	MERLA	1 1/2	7"WTR	184000 CFPD
10	MERLA	1 1/2	8"WTR	197000 CFPD
20	MERLA	1 1/2	4"WTR	139000 CFPD
30	MERLA	1 1/2	3"WTR	121000 CFPD

Gas Bottle SN # :  
 Date Bottle Filled :  
 Date to be Invoiced :

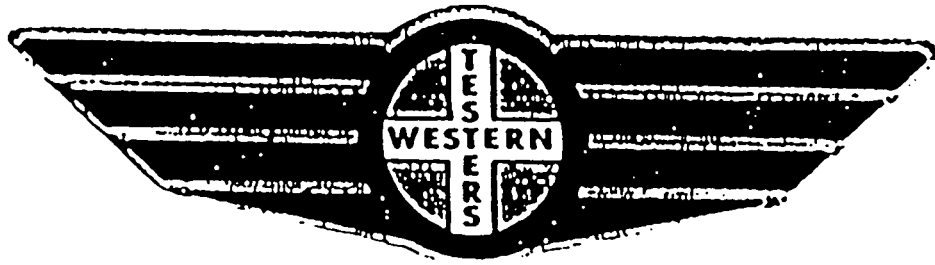


Inside Recorder



Outside Recorder

# FORMATION TEST REPORT



Home Office:

Wichita, Kansas 67201

P.O. Box 1599

Phone (316) 262-5861

WESTERN TESTING CO. INC.  
SUBSURFACE PRESSURE SURVEY

DATE : 2/15/90 TICKET : 15598  
CUSTOMER : JAY BOY OIL INC. LEASE : NICHOLSON  
WELL : #1 TEST: 3 GEOLOGIST : KEN GREENWOOD  
ELEVATION : 2074 KB FORMATION : ARBUCKLE  
SECTION : 24 TOWNSHIP : 20S  
RANGE : 16W COUNTY : PAWNEE STATE : KANSAS  
GAUGE SN# : 13552 RANGE : 4050 CLOCK : 12

INTERVAL FROM : 3800 TO : 3814 TOTAL DEPTH : 3814  
DEPTH OF SELECTIVE ZONE :  
PACKER DEPTH : 3795 SIZE : 6.63  
PACKER DEPTH : 3800 SIZE : 6.63  
PACKER DEPTH : SIZE :  
PACKER DEPTH : SIZE :

DRILLING CON. : ALLEN DRILLING RIG #3  
MUD TYPE : CHEMICAL VISCOSITY : 49  
WEIGHT : 9.3 WATER LOSS (CC) : 10.8  
CHLORIDES (PPM) : 8000  
JARS-MAKE : SERIAL NUMBER :  
DID WELL FLOW ? : NO REVERSED OUT ? : NO

DRILL COLLAR LENGTH : 0 FT I.D. inch : 0.00  
WEIGHT PIPE LENGTH : 0 FT I.D. inch : 0.00  
DRILL PIPE LENGTH : 3779 FT I.D. inch : 3.80  
TEST TOOL LENGTH : 21 FT TOOL SIZE : 5.50  
ANCHOR LENGTH : 14 FT ANCHOR SIZE : 5.50  
SURFACE CHOKE SIZE : .75 IN BOTTOM CHOKE SIZE : .75  
MAIN HOLE SIZE : 7.875 IN TOOL JOINT SIZE : 4.5 FH

BLOW COMMENT #1 : STRONG BLOW THROUGHOUT FLOW PERIODS  
BLOW COMMENT #2 :  
BLOW COMMENT #3 :  
BLOW COMMENT #4 :

RECOVERED : 30 FT OF: SLIGHTLY OIL & GAS CUT MUD 5% OIL

Total Barrels Fluid = 0.42  
Total Fluid Prod Rate = 10.10 BFPD  
Indicated Oil Rate = 0.50 BOPD  
Indicated Wtr Rate = 0.10 BWPD  
Corrected Oil Rate = 6.29 BOPD  
Corrected Wtr Rate = 1.26 BWPD

REMARK 1 :  
REMARK 2 : 2120 FT GAS ABOVE FLUID  
REMARK 3 :  
REMARK 4 :

SET PACKER(S) :	2:40 PM	TIME STARTED OFF BOTTOM :	4:40 PM
WELL TEMPERATURE :	104		
INITIAL HYDROSTATIC PRESSURE		(A)	2109
INITIAL FLOW PERIOD MIN:	30	(B)	75 PSI TO (C) : 75
INITIAL CLOSED IN PERIOD MIN:	30	(D)	577
FINAL FLOW PERIOD MIN:	30	(E)	82 PSI TO (F) : 82
FINAL CLOSED IN PERIOD MIN:	30	(G)	711
FINAL HYDROSTATIC PRESSURE		(H)	2027

WESTERN TESTING CO. INC.  
WICHITA-KANSAS

Pressure Transient Report  
-----

COMPANY : JAY BOY OIL INC.  
RIG : PAWNEE-KANSAS  
FIELD : NICHOLSON  
WELL : #1  
DATE : 2/15/90  
GAUGE NO : 13552

OPERATIONAL COMMENTS

COMPANY : JAY BOY OIL INC.  
 WELL : #1  
 GAUGE # : 13552  
 DATE : 15/ 2/90

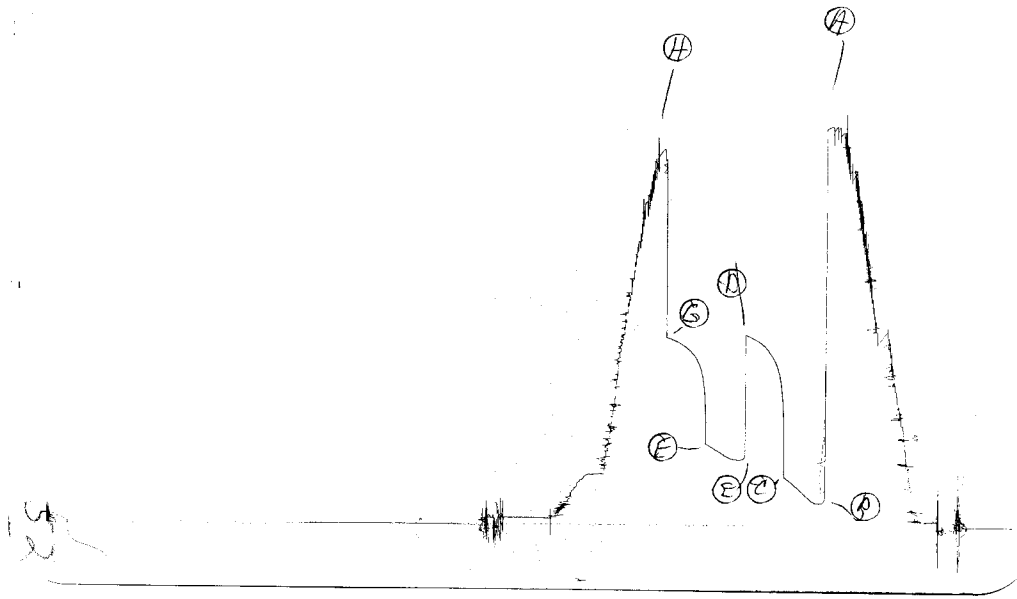
FIELD : NICHOLSON  
 JOB # : 15598  
 DEPTH : 3814  
 TEST :

DATA No.	REAL TIME HR:MN:SS	ELAPSE TIME DELTA HOURS	PRESSURE PSIG	TEMP DEG F	DELTA P Pi-P(i-1)
INITIAL FLOW PERIOD					
2	2:40: 0	0.000	75.000	104.00	0.000
3	2:44:59	0.083	75.000	104.00	0.000
4	2:50: 0	0.167	75.000	104.00	0.000
5	2:55: 0	0.250	75.000	104.00	0.000
6	2:59:59	0.333	75.000	104.00	0.000
7	3: 5: 0	0.417	75.000	104.00	0.000
8	3:10: 0	0.500	75.000	104.00	0.000
INITIAL SHUT-IN PERIOD					
9	3:13: 0	0.550	80.000	104.00	5.000
10	3:16: 0	0.600	208.000	104.00	128.000
11	3:19: 0	0.650	311.000	104.00	103.000
12	3:22: 0	0.700	387.000	104.00	76.000
13	3:25: 0	0.750	445.000	104.00	58.000
14	3:28: 0	0.800	495.000	104.00	50.000
15	3:31: 0	0.850	525.000	104.00	30.000
16	3:34: 0	0.900	548.000	104.00	23.000
17	3:37: 0	0.950	570.000	104.00	22.000
18	3:40: 0	1.000	577.000	104.00	7.000
FINAL FLOW PERIOD					
19	3:41: 0	1.017	82.000	104.00	-495.000
20	3:44:59	1.083	82.000	104.00	0.000
21	3:50: 0	1.167	82.000	104.00	0.000
22	3:55: 0	1.250	82.000	104.00	0.000
23	3:59:59	1.333	82.000	104.00	0.000
24	4: 5: 0	1.417	82.000	104.00	0.000
25	4:10: 0	1.500	82.000	104.00	0.000
FINAL SHUT-IN PERIOD					
26	4:13: 0	1.550	181.000	104.00	99.000
27	4:16: 0	1.600	277.000	104.00	96.000
28	4:19: 0	1.650	369.000	104.00	92.000
29	4:22: 0	1.700	448.000	104.00	79.000
30	4:25: 0	1.750	521.000	104.00	73.000
31	4:28: 0	1.800	577.000	104.00	56.000
32	4:31: 0	1.850	628.000	104.00	51.000
33	4:34: 0	1.900	662.000	104.00	34.000
34	4:37: 0	1.950	697.000	104.00	35.000
35	4:40: 0	2.000	711.000	104.00	14.000

WESTERN TESTING CO. INC.

KT 15599

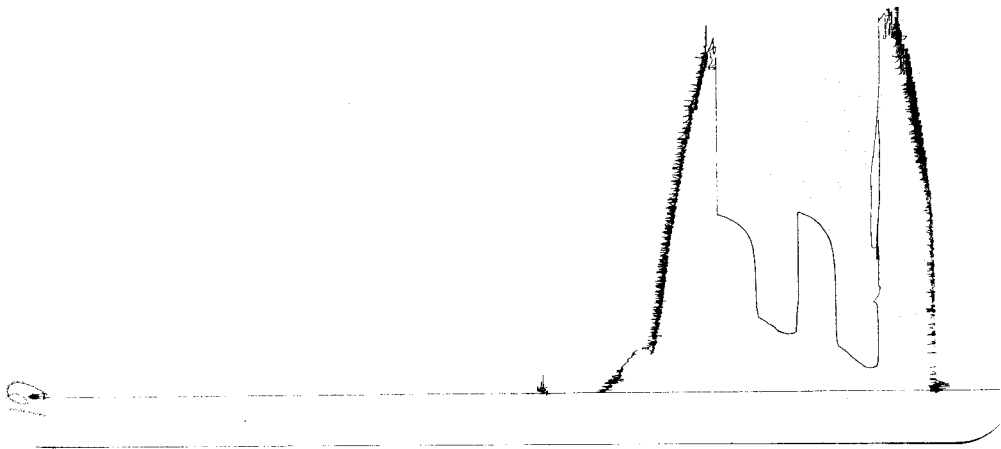
I



Inside Recorder

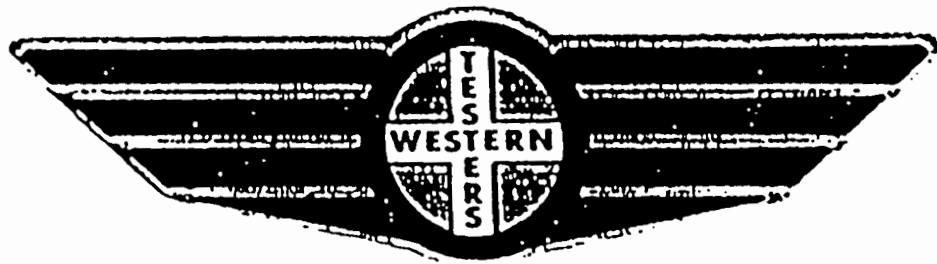
KT 15599

O



Outside Recorder

# FORMATION TEST REPORT



Home Office:

Wichita, Kansas 67201

P.O. Box 1599

Phone (316) 262-5861

WESTERN TESTING CO. INC.  
SUBSURFACE PRESSURE SURVEY

DATE : 2/16/90 TICKET : 15599  
CUSTOMER : JAY BOY OIL INC. LEASE : NICHOLSON  
WELL : #1 TEST: 4 GEOLOGIST : KEN GREENWOOD  
ELEVATION : 2074 KB FORMATION : ARBUCKLE  
SECTION : 24 TOWNSHIP : 20S  
RANGE : 16W COUNTY : PAWNEE STATE : KANSAS  
GAUGE SN# : 13552 RANGE : 4050 CLOCK : 12

INTERVAL FROM : 3820 TO : 3827 TOTAL DEPTH : 3827  
DEPTH OF SELECTIVE ZONE :  
PACKER DEPTH : 3815 SIZE : 6.63  
PACKER DEPTH : 3820 SIZE : 6.63  
PACKER DEPTH : SIZE :  
PACKER DEPTH : SIZE :

DRILLING CON. : ALLEN DRILLING RIG #3  
MUD TYPE : CHEMICAL VISCOSITY : 49  
WEIGHT : 9.3 WATER LOSS (CC) : 10.8  
CHLORIDES (PPM) : 8000  
JARS-MAKE : SERIAL NUMBER :  
DID WELL FLOW ? : NO REVERSED OUT ? : NO

DRILL COLLAR LENGTH : 0 FT I.D. inch : 0.00  
WEIGHT PIPE LENGTH : 0 FT I.D. inch : 0.00  
DRILL PIPE LENGTH : 3795 FT I.D. inch : 3.80  
TEST TOOL LENGTH : 25 FT TOOL SIZE : 5.50  
ANCHOR LENGTH : 7 FT ANCHOR SIZE : 5.50  
SURFACE CHOKE SIZE : .75 IN BOTTOM CHOKE SIZE : .75  
MAIN HOLE SIZE : 7.875 IN TOOL JOINT SIZE : 4.5 FH

BLOW COMMENT #1 : STRONG BLOW THROUGHOUT FLOW PERIODS  
BLOW COMMENT #2 :  
BLOW COMMENT #3 :  
BLOW COMMENT #4 :



WESTERN TESTING CO. INC.  
WICHITA-KANSAS

Pressure Transient Report  
-----

COMPANY : JAY BOY OIL INC.  
RIG : PAWNEE-KANSAS  
FIELD : NICHOLSON  
WELL : #1  
DATE : 2/16/90  
GAUGE NO : 13552

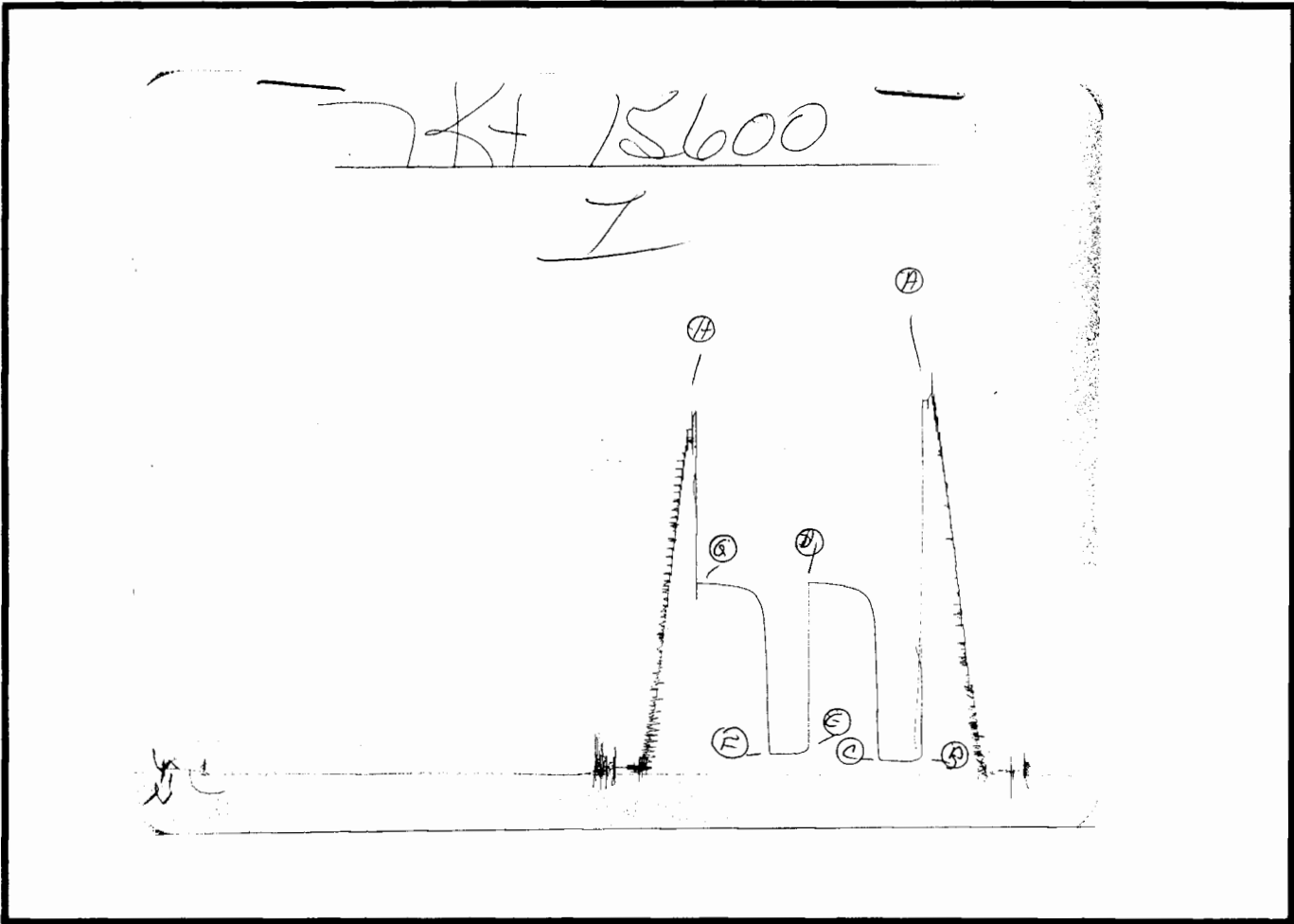
OPERATIONAL COMMENTS

COMPANY : JAY BOY OIL INC.  
 WELL : #1  
 GAUGE # : 13552  
 DATE : 16/ 2/90

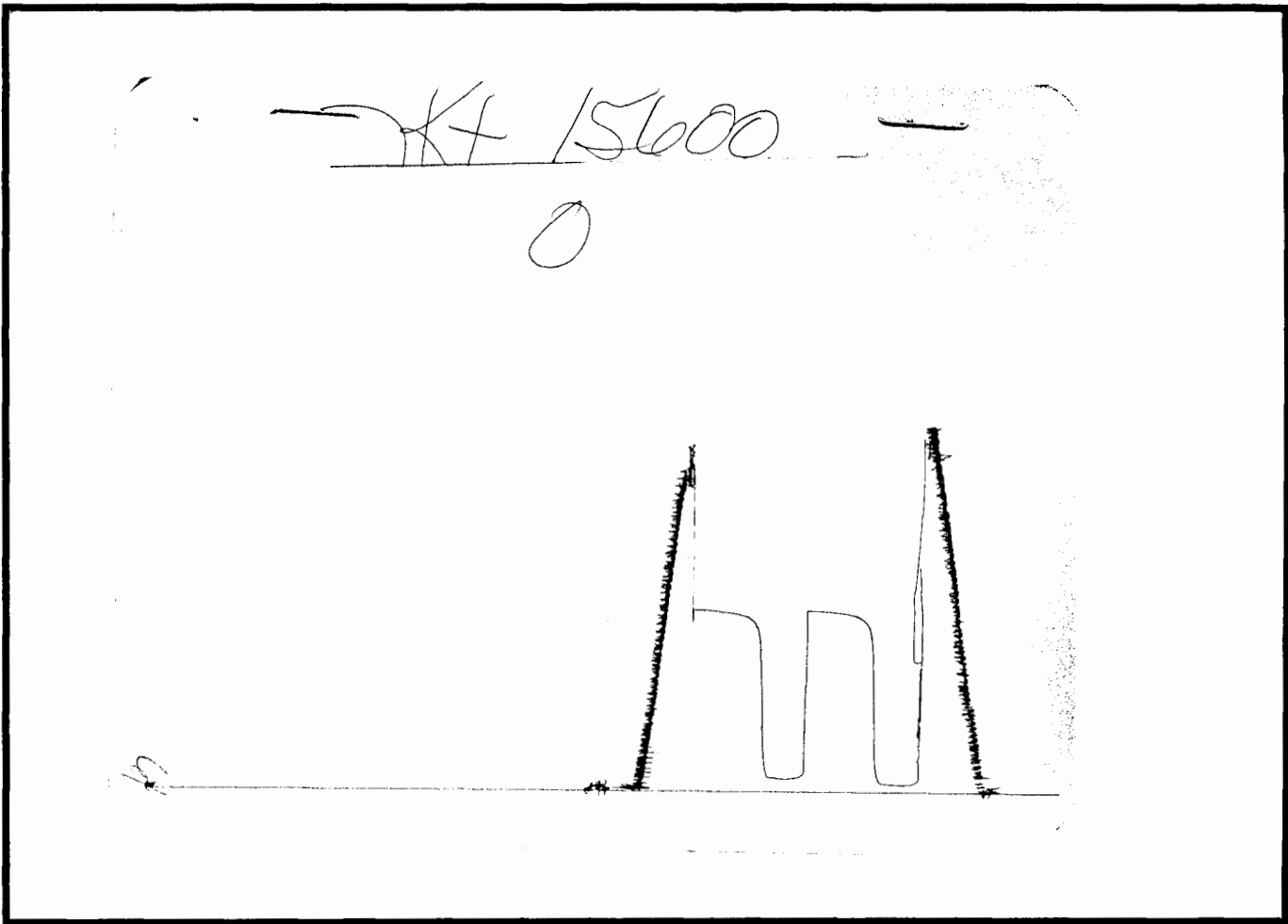
FIELD : NICHOLSON  
 JOB # : 15599  
 DEPTH : 3827  
 TEST :

DATA No.	REAL TIME HR:MN:SS	ELAPSE TIME DELTA HOURS	PRESSURE PSIG	TEMP DEG F	DELTA P Pi-P(i-1)
INITIAL FLOW PERIOD					
2	2:20: 0	0.000	123.000	105.00	0.000
3	2:24:59	0.083	123.000	105.00	0.000
4	2:30: 0	0.167	134.000	105.00	11.000
5	2:35: 0	0.250	166.000	105.00	32.000
6	2:39:59	0.333	200.000	105.00	34.000
7	2:45: 0	0.417	232.000	105.00	32.000
8	2:50: 0	0.500	257.000	105.00	25.000
INITIAL SHUT-IN PERIOD					
9	2:53: 0	0.550	710.000	105.00	453.000
10	2:56: 0	0.600	827.000	105.00	117.000
11	2:59: 0	0.650	880.000	105.00	53.000
12	3: 2: 0	0.700	914.000	105.00	34.000
13	3: 5: 0	0.750	940.000	105.00	26.000
14	3: 8: 0	0.800	962.000	105.00	22.000
15	3:11: 0	0.850	977.000	105.00	15.000
16	3:14: 0	0.900	990.000	105.00	13.000
17	3:17: 0	0.950	1002.000	105.00	12.000
18	3:20: 0	1.000	1011.000	105.00	9.000
FINAL FLOW PERIOD					
19	3:21: 0	1.017	353.000	105.00	-658.000
20	3:24:59	1.083	353.000	105.00	0.000
21	3:30: 0	1.167	355.000	105.00	2.000
22	3:35: 0	1.250	372.000	105.00	17.000
23	3:39:59	1.333	395.000	105.00	23.000
24	3:45: 0	1.417	417.000	105.00	22.000
25	3:50: 0	1.500	433.000	105.00	16.000
FINAL SHUT-IN PERIOD					
26	3:53: 0	1.550	785.000	105.00	352.000
27	3:56: 0	1.600	853.000	105.00	68.000
28	3:59: 0	1.650	896.000	105.00	43.000
29	4: 2: 0	1.700	921.000	105.00	25.000
30	4: 5: 0	1.750	937.000	105.00	16.000
31	4: 8: 0	1.800	953.000	105.00	16.000
32	4:11: 0	1.850	971.000	105.00	18.000
33	4:14: 0	1.900	978.000	105.00	7.000
34	4:17: 0	1.950	987.000	105.00	9.000
35	4:20: 0	2.000	994.000	105.00	7.000

WESTERN TESTING CO. INC.



Inside Recorder



Outside Recorder

# FORMATION TEST REPORT



Home Office:

Wichita, Kansas 67201

P.O. Box 1599

Phone (316) 262-5861

COMPANY JAY BOY OIL, INC. LEASE & WELL NO. NICHOLSON #1 SEC. 24 TWP 20SRGE 16W TEST 5 DATE 2/16/90

WESTERN TESTING CO. INC.  
SUBSURFACE PRESSURE SURVEY

DATE : 2/16/90 TICKET : 15600  
CUSTOMER : JAY BOY OIL INC. LEASE : NICHOLSON  
WELL : #1 TEST: 5 GEOLOGIST : KEN GREENWOOD  
ELEVATION : 2074 KB FORMATION : ARBUCKLE  
SECTION : 24 TOWNSHIP : 20S  
RANGE : 16W COUNTY : PAWNEE STATE : KANSAS  
GAUGE SN# : 13552 RANGE : 4050 CLOCK : 12

INTERVAL FROM : 3832 TO : 3840 TOTAL DEPTH : 3840  
DEPTH OF SELECTIVE ZONE :  
PACKER DEPTH : 3827 SIZE : 6.63  
PACKER DEPTH : 3832 SIZE : 6.63  
PACKER DEPTH : SIZE :  
PACKER DEPTH : SIZE :

DRILLING CON. : ALLEN DRILLING RIG #3  
MUD TYPE : CHEMICAL VISCOSITY : 49  
WEIGHT : 9.3 WATER LOSS (CC) : 10.8  
CHLORIDES (PPM) : 8000  
JARS-MAKE : SERIAL NUMBER :  
DID WELL FLOW ? : NO REVERSED OUT ? : NO

DRILL COLLAR LENGTH : 0 FT I.D. inch : 0.00  
WEIGHT PIPE LENGTH : 0 FT I.D. inch : 0.00  
DRILL PIPE LENGTH : 3807 FT I.D. inch : 3.80  
TEST TOOL LENGTH : 25 FT TOOL SIZE : 5.50  
ANCHOR LENGTH : 8 FT ANCHOR SIZE : 5.50  
SURFACE CHOKE SIZE : .75 IN BOTTOM CHOKE SIZE : .75  
MAIN HOLE SIZE : 7.875 IN TOOL JOINT SIZE : 4.5 FH

BLOW COMMENT #1 : FAIR BLOW THROUGHOUT TEST  
BLOW COMMENT #2 :  
BLOW COMMENT #3 :  
BLOW COMMENT #4 :



WESTERN TESTING CO. INC.  
WICHITA-KANSAS

Pressure Transient Report  
-----

COMPANY : JAY BOY OIL INC.  
RIG : PAWNEE-KANSAS  
FIELD : NICHOLSON  
WELL : #1  
DATE : 2/16/90  
GAUGE NO : 13552

OPERATIONAL COMMENTS

COMPANY : JAY BOY OIL INC.  
WELL : #1  
GAUGE # : 13552  
DATE : 16/ 2/90

FIELD : NICHOLSON  
JOB # : 15600  
DEPTH : 3840  
TEST :

DATA No.	REAL TIME HR:MN:SS	ELAPSE TIME DELTA HOURS	PRESSURE PSIG	TEMP DEG F	DELTA P Pi-P(i-1)
INITIAL FLOW PERIOD					
2	1:10: 0	0.000	80.000	105.00	0.000
3	1:14:59	0.083	80.000	105.00	0.000
4	1:20: 0	0.167	80.000	105.00	0.000
5	1:25: 0	0.250	80.000	105.00	0.000
6	1:29:59	0.333	80.000	105.00	0.000
7	1:35: 0	0.417	81.000	105.00	1.000
8	1:40: 0	0.500	81.000	105.00	0.000
INITIAL SHUT-IN PERIOD					
9	1:43: 0	0.550	109.000	105.00	28.000
10	1:46: 0	0.600	727.000	105.00	618.000
11	1:49: 0	0.650	916.000	105.00	189.000
12	1:52: 0	0.700	979.000	105.00	63.000
13	1:55: 0	0.750	1007.000	105.00	28.000
14	1:58: 0	0.800	1023.000	105.00	16.000
15	2: 1: 0	0.850	1036.000	105.00	13.000
16	2: 4: 0	0.900	1044.000	105.00	8.000
17	2: 7: 0	0.950	1049.000	105.00	5.000
18	2:10: 0	1.000	1054.000	105.00	5.000
19	2:13: 0	1.050	1058.000	105.00	4.000
20	2:16: 0	1.100	1060.000	105.00	2.000
21	2:19: 0	1.150	1063.000	105.00	3.000
22	2:22: 0	1.200	1066.000	105.00	3.000
23	2:25: 0	1.250	1068.000	105.00	2.000
24	2:28: 0	1.300	1070.000	105.00	2.000
25	2:31: 0	1.350	1071.000	105.00	1.000
26	2:34: 0	1.400	1072.000	105.00	1.000
27	2:37: 0	1.450	1073.000	105.00	1.000
28	2:40: 0	1.500	1074.000	105.00	1.000
FINAL FLOW PERIOD					
29	2:41: 0	1.517	118.000	105.00	-956.000
30	2:44:59	1.583	118.000	105.00	0.000
31	2:50: 0	1.667	118.000	105.00	0.000
32	2:55: 0	1.750	118.000	105.00	0.000
33	2:59:59	1.833	118.000	105.00	0.000
34	3: 5: 0	1.917	118.000	105.00	0.000
35	3:10: 0	2.000	118.000	105.00	0.000
FINAL SHUT-IN PERIOD					
36	3:13: 0	2.050	544.000	105.00	426.000
37	3:16: 0	2.100	889.000	105.00	345.000
38	3:19: 0	2.150	963.000	105.00	74.000
39	3:22: 0	2.200	999.000	105.00	36.000
40	3:25: 0	2.250	1018.000	105.00	19.000
41	3:28: 0	2.300	1030.000	105.00	12.000
42	3:31: 0	2.350	1037.000	105.00	7.000
43	3:34: 0	2.400	1045.000	105.00	8.000
44	3:37: 0	2.450	1050.000	105.00	5.000
45	3:40: 0	2.500	1053.000	105.00	3.000
46	3:43: 0	2.550	1056.000	105.00	3.000
47	3:46: 0	2.600	1059.000	105.00	3.000
48	3:49: 0	2.650	1062.000	105.00	3.000

COMPANY : JAY BOY OIL INC.  
WELL : #1  
GAUGE # : 13552  
DATE : 16/ 2/90

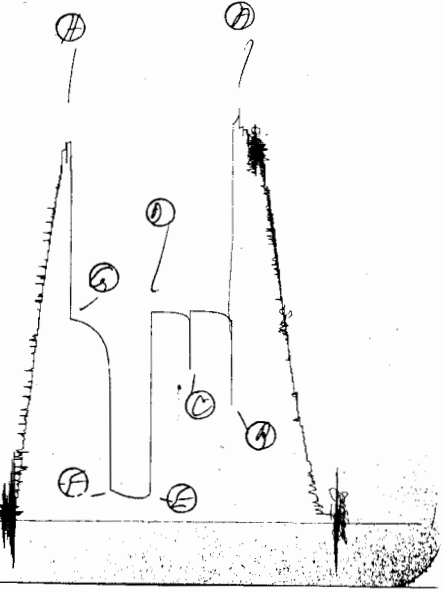
FIELD : NICHOLSON  
JOB # : 15600  
DEPTH : 3840  
TEST :

DATA No.	REAL TIME HR:MN:SS	ELAPSE TIME DELTA HOURS	PRESSURE PSIG	TEMP DEG F	DELTA P Pi-P(i-1)
49	3:52: 0	2.700	1064.000	105.00	2.000
50	3:55: 0	2.750	1066.000	105.00	2.000
51	3:58: 0	2.800	1068.000	105.00	2.000
52	4: 1: 0	2.850	1069.000	105.00	1.000
53	4: 4: 0	2.900	1070.000	105.00	1.000
54	4: 7: 0	2.950	1070.000	105.00	0.000
55	4:10: 0	3.000	1070.000	105.00	0.000

WESTERN TESTING CO. INC.

— JK7 15876 —

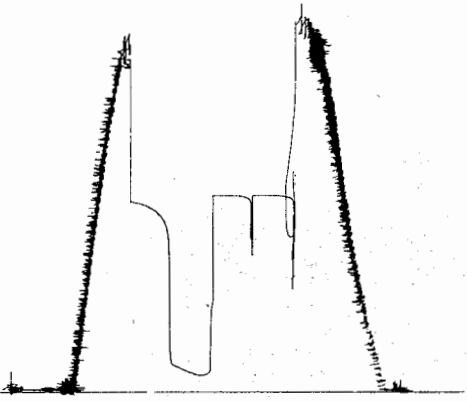
I



Inside Recorder

— JK7 15876 —

O



Outside Recorder

FORMATION

TEST

REPORT



Home Office:

Wichita, Kansas 67201

P.O. Box 1599

Phone (316) 262-5861

PROPERTY OF JAY BOY OIL, INC. LEASE & WELL NO. NICHOLSON #1 SEC. 24 TWP 20SRGE 16W TEST 6 DATE 2/17/90

WESTERN TESTING CO. INC.  
SUBSURFACE PRESSURE SURVEY

DATE : 2/17/90 TICKET : 15876  
CUSTOMER : JAY BOY OIL INC. LEASE : NICHOLSON  
WELL : #1 TEST: 6 GEOLOGIST : KEN GREENWOOD  
ELEVATION : 2074 KB FORMATION : ARBUCKLE  
SECTION : 24 TOWNSHIP : 20S  
RANGE : 16W COUNTY : PAWNEE STATE : KANSAS  
GAUGE SN# : 13552 RANGE : 4050 CLOCK : 12

INTERVAL FROM : 3840 TO : 3851 TOTAL DEPTH : 3851  
DEPTH OF SELECTIVE ZONE :  
PACKER DEPTH : 3835 SIZE : 6.63  
PACKER DEPTH : 3840 SIZE : 6.63  
PACKER DEPTH : SIZE :  
PACKER DEPTH : SIZE :

DRILLING CON. : ALLEN DRILLING RIG #1  
MUD TYPE : CHEMICAL VISCOSITY : 55  
WEIGHT : 9.5 WATER LOSS (CC) : 12.8  
CHLORIDES (PPM) : 10000  
JARS-MAKE : SERIAL NUMBER :  
DID WELL FLOW ? : NO REVERSED OUT ? : NO

DRILL COLLAR LENGTH : 0 FT I.D. inch : 0.00  
WEIGHT PIPE LENGTH : 0 FT I.D. inch : 0.00  
DRILL PIPE LENGTH : 3819 FT I.D. inch : 3.80  
TEST TOOL LENGTH : 21 FT TOOL SIZE : 5.50  
ANCHOR LENGTH : 11 FT ANCHOR SIZE : 5.50  
SURFACE CHOKE SIZE : .75 IN BOTTOM CHOKE SIZE : .75  
MAIN HOLE SIZE : 7.875 IN TOOL JOINT SIZE : 4.5 FH

BLOW COMMENT #1 : INITIAL FLOW PERIOD-WEAK BLOW THROUGHOUT  
BLOW COMMENT #2 : FINAL FLOW PERIOD-STRONG BLOW THROUGHOUT  
BLOW COMMENT #3 :  
BLOW COMMENT #4 :



WESTERN TESTING CO. INC.  
WICHITA-KANSAS

Pressure Transient Report  
-----

COMPANY : JAY BOY OIL INC.  
RIG : PAWNEE-KANSAS  
FIELD : NICHOLSON  
WELL : #1  
DATE : 2/17/90  
GAUGE NO : 13552

OPERATIONAL COMMENTS

COMPANY : JAY BOY OIL INC.  
WELL : #1  
GAUGE # : 13552  
DATE : 17/ 2/90

FIELD : NICHOLSON  
JOB # : 15876  
DEPTH : 3851  
TEST :

DATA No.	REAL TIME HR:MN:SS	ELAPSE TIME DELTA HOURS	PRESSURE PSIG	TEMP DEG F	DELTA P Pi-P(i-1)
INITIAL FLOW PERIOD					
2	1: 0: 0	0.000	625.000	106.00	0.000
3	1: 4:59	0.083	1088.000	106.00	463.000
4	1:10: 0	0.167	1103.000	106.00	15.000
5	1:15: 0	0.250	1109.000	106.00	6.000
6	1:19:59	0.333	1113.000	106.00	4.000
7	1:25: 0	0.417	1114.000	106.00	1.000
8	1:30: 0	0.500	1115.000	106.00	1.000
INITIAL SHUT-IN PERIOD					
9	1:33: 0	0.550	1082.000	106.00	-33.000
10	1:36: 0	0.600	1095.000	106.00	13.000
11	1:39: 0	0.650	1100.000	106.00	5.000
12	1:42: 0	0.700	1103.000	106.00	3.000
13	1:45: 0	0.750	1106.000	106.00	3.000
14	1:48: 0	0.800	1106.000	106.00	0.000
15	1:51: 0	0.850	1106.000	106.00	0.000
16	2: 0: 0	1.000	1106.000	106.00	0.000
FINAL FLOW PERIOD					
17	2: 1: 0	1.017	129.000	106.00	-977.000
18	2: 4:59	1.083	129.000	106.00	0.000
19	2:10: 0	1.167	129.000	106.00	0.000
20	2:15: 0	1.250	132.000	106.00	3.000
21	2:19:59	1.333	141.000	106.00	9.000
22	2:25: 0	1.417	157.000	106.00	16.000
23	2:30: 0	1.500	168.000	106.00	11.000
FINAL SHUT-IN PERIOD					
24	2:33: 0	1.550	841.000	106.00	673.000
25	2:36: 0	1.600	940.000	106.00	99.000
26	2:39: 0	1.650	976.000	106.00	36.000
27	2:42: 0	1.700	1001.000	106.00	25.000
28	2:45: 0	1.750	1019.000	106.00	18.000
29	2:48: 0	1.800	1034.000	106.00	15.000
30	2:51: 0	1.850	1045.000	106.00	11.000
31	2:54: 0	1.900	1054.000	106.00	9.000
32	2:57: 0	1.950	1060.000	106.00	6.000
33	3: 0: 0	2.000	1065.000	106.00	5.000

WESTERN TESTING CO. INC.