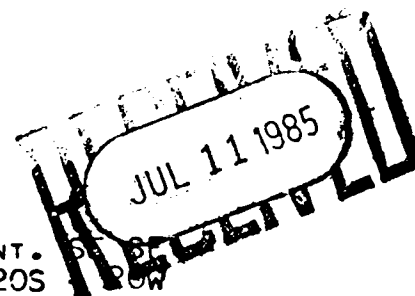


**ENERGY THREE, INC.**

P.O. BOX 1505

GREAT BEND, KANSAS 67530



PELTON # 1:(85) DAILY DRILLING INFORMATION . . .

ELEV. = 2141' GR.
2146' KBAPPROX. CENT. 51.31
SEC. 29 - 20S
PAWNEE COUNTY, KANSAS

6-29-85 MOVED TO LOCATION, RIGGED UP AND STARTED TO SPUD.

6-30-85 @ 500' - 7:00 A.M. 6-30-85.
SET 8 5/8" 23# SURFACE CASING @ 498'. ALLIED CEMENTING
COMPANY CEMENTED W/ 275 SACKS OF 60/40 POZMIX; 3% C.C.,
2% GEL. CEMENT CIRCULATED O.K. PLUG DOWN @ 1:00 A.M.
6-30-85.

7-1-85 DRILLING @ 1910' - 7:00 A.M. 7-1-85.

7-2-85 DRILLING @ 2635' - 7:00 A.M. 7-2-85.

7-3-85 DRILLING @ 3230' - 7:00 A.M. 7-3-85.

7-4-85 DRILLING @ 3685' - 7:00 A.M. 7-4-85.

7-5-85 DRILLING @ 4000' - 7:00 A.M. 7-5-85
MUD VISC. = 44.0 MUD WT. = 9.8 WATER LOSS = 10.0TOP OF HEEBNER = ~~3882~~ 3882' / 11' / 11' 18 1/2'TOP OF TORONTO = ~~3880~~ 3880' / 11' / 11' 34 1/2'TOP OF LANS.-KC = ~~3770~~ 3770' / 11' / 11' 34 1/2'

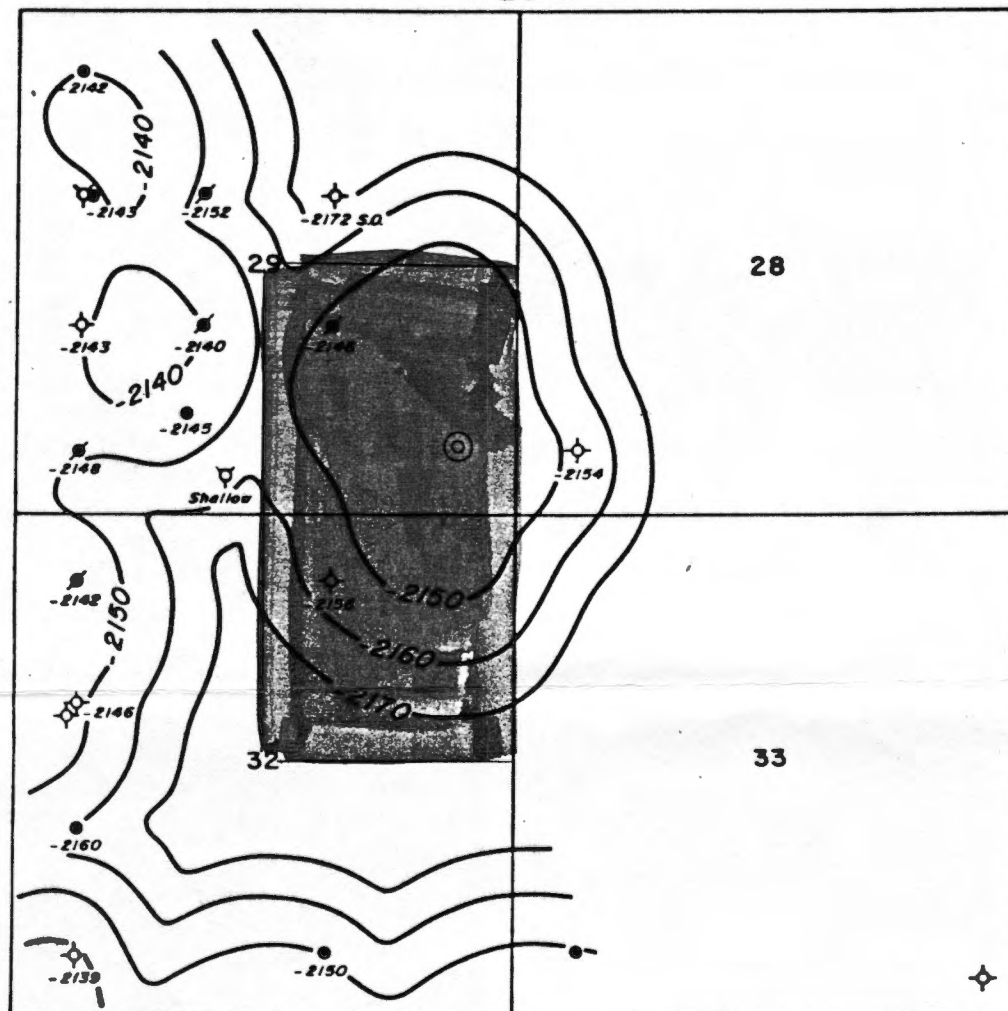
CORRECTION OF SAMPLE TOPS SHOWN BELOW:

TOP OF HEEBNER = 3687' (- 1541)
TOP OF TORONTO = 3710' (- 1564)
TOP OF LANS.-KC = 3734' (- 1588)7-6-85 DRILLING @ 4270' - 7:00 A.M. 7-6-85
MUD VISC. = 44.0 MUD WT. = 9.8 WATER LOSS = 10.07-7-85 R. T. D. = 4350'
TOP OF MISSISSIPPI = 4314' (- 2168)GREAT GUNS RAN OPEN HOLE LOG - SHOWED NOTHING PRODUCTIVE.
PLUGGED WELL AS D & A 10:15 A.M. 7-7-85 RAN NO DST'S.

ELECTRIC LOG TOPS:

HEEBNER = 3695' (- 1549)
TORONTO = 3708' (- 1562)
LANS.-KC = 3739' (- 1593)
MISSISSIPPI = 4320' (- 2174)
LOG T.D. = 4356'

R 20 W



28

T
20
S

33

ENERGY THREE, INC.

PELTON PROSPECT
PAWNEE CO., KANSAS

Geol.: Jene C. Darmstetter
Date: 10-18-84

Datum: Mississippian
C.I. = 10'