

Company Palomino Petroleum. Inc.  
Address 4924 SE 84th St.  
CSZ Newton, KS 67114  
Attn. Klee R. Watchous

Lease Name Wittman  
Lease # 3  
Legal Desc W/2 W/2 SE  
Section 12  
Township 20s  
County Ness  
Drilling Cont Southwind Drilling #1  
Job Ticket 4027  
Range 22w  
State KS

Comments Times:30-30-30-30

15-135-24605

GENERAL INFORMATION

Test # 1 Test Date 6/14/2007  
Tester Richard Holtz  
Test Type Conventional Bottom Hole  
Successful Test

Chokes 3/4 Hole Size 7 7/8  
Top Recorder # w1023  
Mid Recorder #  
Bott Recorder # 13564

# of Packers 2.0 Packer Size 6 3/4

Mileage 124 Approved By

Mud Type Gel Chem  
Mud Weight 9.3 Viscosity 58.0  
Filtrate 8.8 Chlorides 3400

Standby Time 0  
Extra Equipmnt jars and safety joint  
Time on Site 7:00 AM  
Tool Picked Up 10:30 AM  
Tool Layed Dwn 4:30 PM

Drill Collar Len 0  
Wght Pipe Len 0

Elevation 2223.00 Kelley Bushings 2233.00

Formation Mississippi  
Interval Top 4349.0 Bottom 4383.0  
Anchor Len Below 34.0 Between 0  
Total Depth 4383.0

Start Date/Time 6/14/2007 10:16 AM  
End Date/Time 6/14/2007 4:52 PM

Blow Type Initial Flow, surface blow not building, Final Flow, weak blow building to 2 in.  
No blow back on shut ins.

12-205-22w

RECOVERY

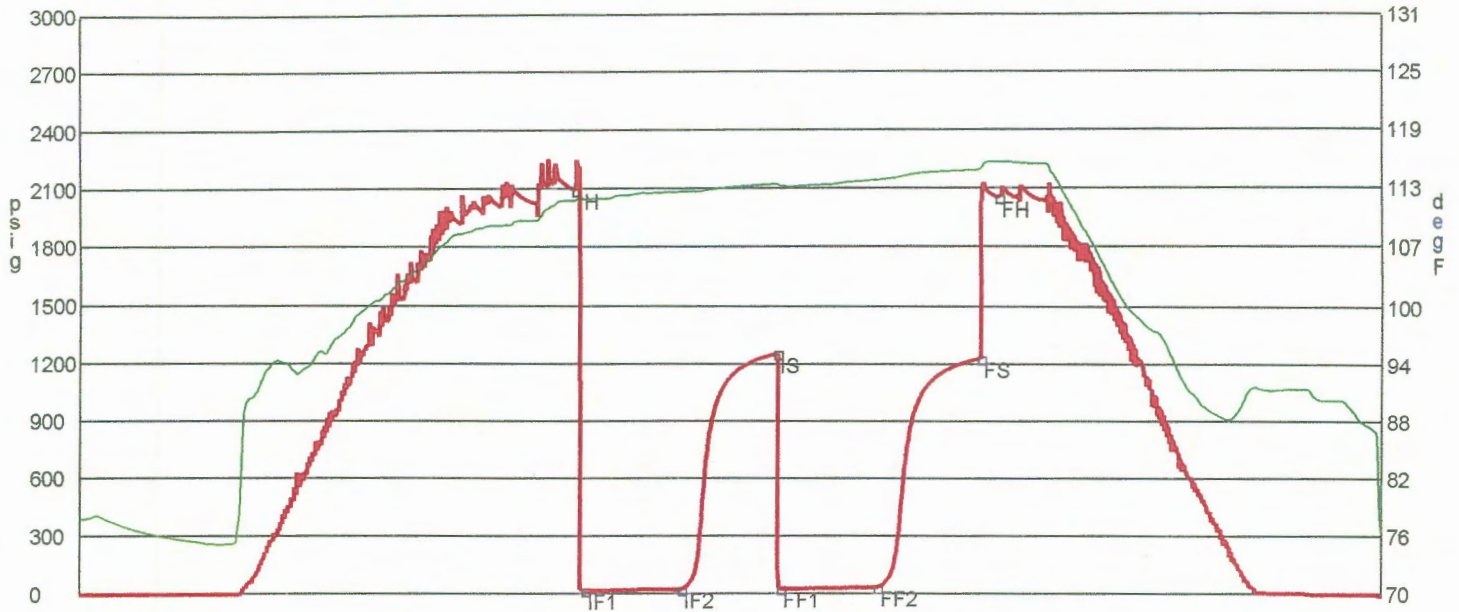
Feet	Description	Gas	Oil	Water	Mud
50	oil cut mud	0% 0ft	14% 7ft	0% 0ft	86% 43ft

DST Fluids 0

KANSAS OIL & GAS COMMISSION

SEP 26 2007

CONSTRUCTION DIVISION  
WICHITA, KS



	Date	Time	Pressure	Temp	
IH	6/14/2007 12:45:15 PM	2.4875	2092.988	111.46	Initial Hydro-static
IF1	6/14/2007 12:48:30 PM	2.541667	15.925	111.591	Initial Flow (1)
IF2	6/14/2007 1:17:45 PM	3.029167	22.837	112.374	Initial Flow (2)
IS	6/14/2007 1:46:45 PM	3.5125	1254.186	113.136	Initial Shut-In
FF1	6/14/2007 1:48:00 PM	3.533333	25.897	112.96	Final Flow (1)
FF2	6/14/2007 2:17:30 PM	4.025	32.35	113.565	Final Flow (2)
FS	6/14/2007 2:48:45 PM	4.545833	1228.351	114.607	Final Shut-In
FH	6/14/2007 2:54:15 PM	4.6375	2051.313	115.424	Final Hydro-static

GAS FLOWS

Min Into IFP   Min Into FFP   Gas Flows   Pressure   Choke

RECEIVED  
KANSAS CORPORATION COMMISSION

SEP 26 2007

Company Palomino Petroleum, Inc.  
 Address 4924 SE 84th St.  
 City Newton, KS 67114  
 Name Klee R. Watchous

Lease Name Wittman  
 Lease # 3  
 Legal Desc W/2 W/2 SE  
 Section 12  
 Township 20s  
 County Ness  
 Drilling Cont Southwind Drilling #1  
 Job Ticket 4027  
 Range 22w  
 State KS

Comments Times:30-30-30-30

GENERAL INFORMATION

Test # 2 Test Date 6/15/2007  
 Tester Richard Holtz  
 Test Type Conventional Bottom Hole  
 Successful Test  
 No of Packers 2.0 Packer Size 6 3/4  
 Mud Type Gel Chem  
 Mud Weight 9.3 Viscosity 58.0  
 Mud Rate 8.8 Chlorides 3400

Chokes 3/4 Hole Size 7 7/8  
 Top Recorder # w1023  
 Mid Recorder #  
 Bott Recorder # 13564  
 Mileage 48 Approved By  
 Standby Time 0  
 Extra Equipmnt jars and safety joint  
 Time on Site 12:00 AM  
 Tool Picked Up 2:30 AM  
 Tool Layed Dwn 9:30 AM

Drill Collar Len 0  
 Weight Pipe Len 0

Elevation 2223.00 Kelley Bushings 2233.00

Formation Mississippi  
 Interval Top 4349.0 Bottom 4393.0  
 Anchor Len Below 44.0 Between 0  
 Total Depth 4393.0  
 Flow Type Initial Flow, weak blow building to strong, BOB in 18 min. Final Flow, weak blow building to strong, BOB in 25 min. No blow back on shut ins.

Start Date/Time 6/15/2007 1:45 AM  
 End Date/Time 6/15/2007 9:35 AM

RECOVERY

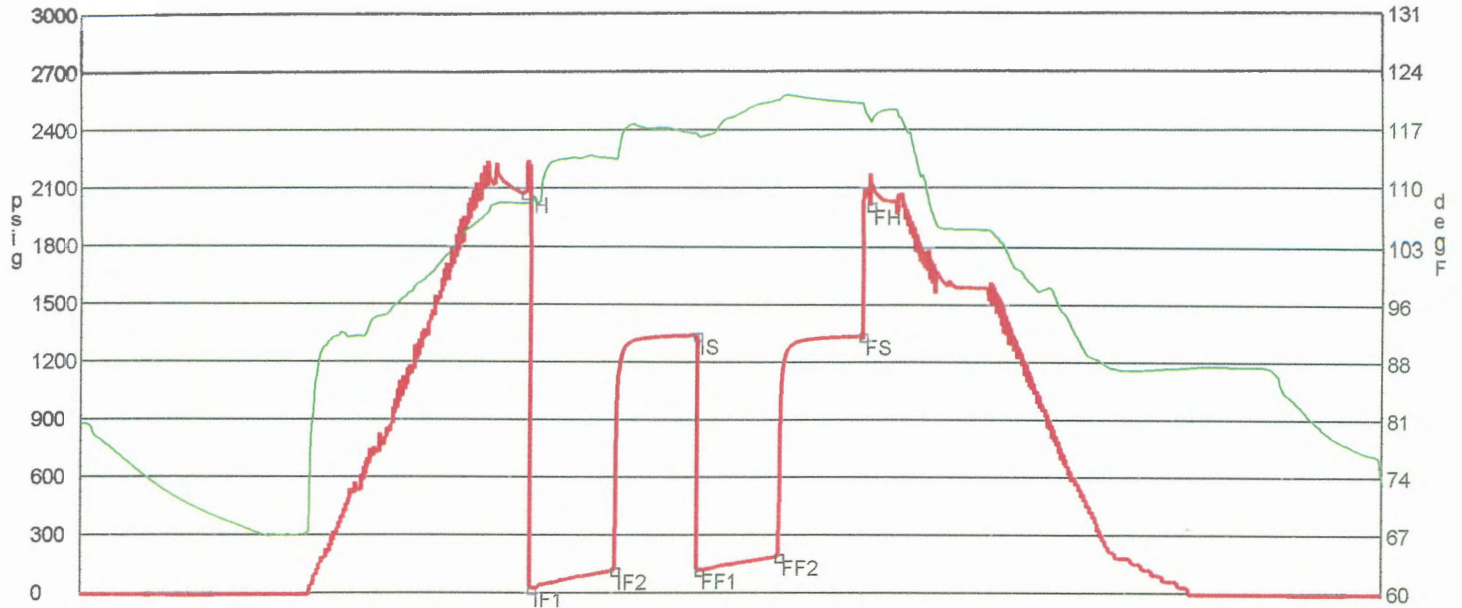
Depth	Description	Gas	Oil	Water	Mud
0	oil	0% 0ft	100% 70ft	0% 0ft	0% 0ft
20	gassy oil cut mud	7% 8.4ft	14% 16.8ft	0% 0ft	79% 94.8ft
0	mud cut oil/w trace of water	0% 0ft	50% 30ft	trace	50% 30ft
20	gassy water and mud cut oil	14% 16.8ft	46% 55.2ft	27% 32.4ft	13% 15.6ft
0	gassy oil and water cut mud	7% 4.2ft	7% 4.2ft	72% 43.2ft	14% 8.4ft

IST Fluids 34000

KANDAS OIL FIELD SERVICE

SEP 26 2007

CONCRETE



	Date	Time	Pressure	Temp	
IH	6/15/2007 4:24:30 AM	2.65	2070.843	107.84	Initial Hydro-static
IF1	6/15/2007 4:27:15 AM	2.695833	26.266	107.865	Initial Flow (1)
IF2	6/15/2007 4:57:15 AM	3.195833	116.759	113.301	Initial Flow (2)
IS	6/15/2007 5:26:45 AM	3.6875	1341.056	116.4	Initial Shut-In
FF1	6/15/2007 5:27:45 AM	3.704167	118.52	116.017	Final Flow (1)
FF2	6/15/2007 5:56:45 AM	4.1875	189.751	120.485	Final Flow (2)
FS	6/15/2007 6:26:45 AM	4.6875	1337.268	120.051	Final Shut-In
FH	6/15/2007 6:29:30 AM	4.733333	2007.278	118.172	Final Hydro-static

GAS FLOWS

Min Into IFP   Min Into FFP   Gas Flows   Pressure   Choke

RECEIVED  
KANSAS CORPORATION COMMISSION

SEP 26 2007

CONSERVATION DIVISION  
1111 W. 12TH ST.