

2nd

SIDE ONE

STATE CORPORATION COMMISSION OF KANSAS  
OIL & GAS CONSERVATION DIVISION  
WELL COMPLETION OR RECOMPLETION FORM  
ACO-1 WELL HISTORY  
DESCRIPTION OF WELL AND LEASE

API NO. 15-135-23,268  
County Ness  
NW NW Sec. 21 Twp. 20 Rge. 23 East  
..... West  
4620 Ft North from Southeast Corner of Section  
4620 Ft West from Southeast Corner of Section  
(Note: Locate well in section plat below)  
Lease Name Burditt Well # 1

Operator: License # 6040  
Name Bankoff Oil Company  
Address Box 700657  
City/State/Zip Tulsa, OK 74170

Purchaser.....

Operator Contact Person Frank Mize  
Phone (316) 262-2784

Contractor: License # 5422  
Name Abercrombie Drilling, Inc.

Wellsite Geologist Gerald Zorger  
Phone (316) 264-2375

Designate Type of Completion  
 New Well  Re-Entry  Workover  
 Oil  SWD  Temp. Abd  
 Gas  Inj  Delayed Comp.  
 Dry  Other (Core, Water Supply etc.)

If OWNED: old well info as follows:  
Operator.....  
Well Name.....  
Comp. Date.....Old Total Depth.....

WELL HISTORY

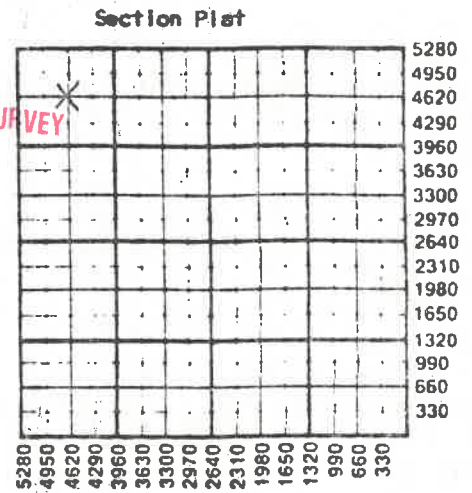
Drilling Method:  
 Mud Rotary  Air Rotary  Cable  
7-5-88 7-13-88 7-14-88  
Spud Date Date Reached TD Completion Date  
4430  
Total Depth PBD

Amount of Surface Pipe Set and Cemented at 295 feet  
Multiple Stage Cementing Collar Used? Yes No  
If yes, show depth set.....feet  
If alternate 2 completion, cement circulated  
from.....feet depth to.....w/.....SX cmt  
Cement Company Name.....  
Invoice #.....

AUG 03 1988

KANSAS GEOLOGICAL SURVEY  
WICHITA BRANCH

RECEIVED  
STATE CORPORATION COMMISSION  
AUG 1 1988  
CONSERVATION DIVISION  
Wichita, Kansas



WATER SUPPLY INFORMATION  
Disposition of Produced Water: Disposal  
Docket # ..... Repressuring

Questions on this portion of the ACO-1 call:  
Water Resources Board (913) 296-3717  
Source of Water:  
Division of Water Resources Permit #.....  
Groundwater.....Ft North from Southeast Corner  
(Well) .....Ft West from Southeast Corner of  
Sec Twp Rge East West  
Surface Water.....Ft North from Southeast Corner  
(Stream, pond etc).....Ft West from Southeast Corner  
Sec Twp Rge East West  
Other (explain) Pond, water purchased from  
Bryan Mauck  
(purchased from city, R.W.D. #)

INSTRUCTIONS: This form shall be completed in triplicate and filed with the Kansas Corporation Commission, 200 Colorado Derby Building, Wichita, Kansas 67202, within 120 days of the spud date of any well. Rule 82-3-130, 82-3-107 and 82-3-106 apply. Information on side two of this form will be held confidential for a period of 12 months if requested in writing and submitted with the form. See rule 82-3-107 for confidentiality in excess of 12 months. One copy of all wireline logs and driller's time log shall be attached with this form. Submit CP-4 form with all plugged wells. Submit CP-111 form with all temporarily abandoned wells.

All requirements of the statutes, rules and regulations promulgated to regulate the oil and gas industry have been fully complied with and the statements herein are complete and correct to the best of my knowledge.

Signature [Signature]  
Title Partner Date 7/28/88

Subscribed and sworn to before me this 28th day of July 1988  
Notary Public [Signature] Laura Gorrell  
Date Commission Expires 12/26/88

K.C.C. OFFICE USE ONLY  
F Letter of Confidentiality Attached  
C Wireline Log Received  
C Driller's Timelog Received  
Distribution  
KCC SWD/Rep NGPA  
KGS Plug Other (Specify)

Sec 21 Twp 20 Rge 23

Operator Name Bankoff Oil Company Lease Name Burditt Well # 1

Sec. 21 Twp. 20 Rge. 23  East  West County Ness

WELL LOG

INSTRUCTIONS: Show important tops and base of formations penetrated. Detail all cores. Report all drill stem tests giving interval tested, time tool open and closed, flowing and shut-in pressures, whether shut-in pressure reached static level, hydrostatic pressures, bottom hole temperature, fluid recovery, and flow rates if gas to surface during test. Attach extra sheet if more space is needed. Attach copy of log.

Drill Stem Tests Taken  Yes  No  
 Samples Sent to Geological Survey  Yes  No  
 Cores Taken  Yes  No

Formation Description  
 Log  Sample

DST #1 6260' to 4300' 45-60-45-90  
 1' free oil - 90' muddy water - 300' Salt Water  
 IFP 41-114 FFP 145-197 ISIP 1010  
 FSIP 1010

DST #2 4333' to 4377' 30-45-0-0  
 Weak blow died 29 Min. - no Blow on 2nd opening  
 1' oil cut mud IFP 31 - 31 FFP 31 - 31  
 ISIP 52 FSIP 31 No Sand

DST #3 4333' to 4384' 27-30-1-0  
 Weak blow died in 25 Min - recovered 2' oil cut  
 mud IFP 20-20 FFP 38-38 ISIP 145 No  
 final shut in

DST #4 4333' to 4391' 60-60-60-60 Weak blow built  
 1.25' on initial opening and steady blow on final  
 opening. Recovered 25' mud of which 5' was oil cut  
 IFP 36-36 FFP 46-46 ISIP 1031 FSIP 937

Name	Top	Bottom
ANHYDRITE	1504	
HEEBNER	3708	
LANSING	3756	
BASE K.C.	4101	
MARMATON	4125	
FT. SCOTT	4263	
CHERORKK	4293	
CHEROKEE SAND	4364	
MISSISSIPPIAN	4370	
MISS OSAGE	4384	
TD	4430	

CASING RECORD <input type="checkbox"/> New <input type="checkbox"/> Used Report all strings set-conductor, surface, intermediate, production, etc.							
Purpose of String	Size Hole Drilled	Size Casing Set (In O.D.)	Weight Lbs/Ft.	Setting Depth	Type of Cement	#Sacks Used	Type and Percent Additives
Surface	12 1/4	8 5/8	20#	295	60/40 Posmix	175	3% cc-2% gel
PERFORATION RECORD				Acid, Fracture, Shot, Cement Squeeze Record			
Shots Per Foot	Specify Footage of Each Interval Perforated			(Amount and Kind of Material Used)		Depth	
TUBING RECORD				Liner Run <input type="checkbox"/> Yes <input type="checkbox"/> No			
Date of First Production		Producing Method <input type="checkbox"/> Flowing <input type="checkbox"/> Pumping <input type="checkbox"/> Gas Lift <input type="checkbox"/> Other (explain).....					
Estimated Production Per 24 Hours	Oil	Gas	Water	Gas-Oil Ratio	Gravity		
	Bbls	MCF	Bbls	CFPB			

METHOD OF COMPLETION Production Interval

Disposition of gas:  Vented  Open Hole  Perforation  
 Sold  Other (Specify) .....  
 Used on Lease  Dually Completed  
 Commingled