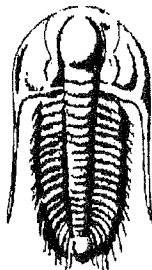


7-20s-24w

15-135-24554



**TRILOBITE
TESTING, INC.**

Pickrell Drilling CO Inc

DRILL STEM TEST REPORT

Prepared For: **Pickrell Drilling CO Inc**

Betz E #3

100 S Main Ste 205
Wichita KS 67202

ATTN: Jerry Smith

7 20 24 Ness KS
W

7 20 24 Ness KS

Betz E #3

Start Date: 2006.11.05 @ 04:00:26

End Date: 2006.11.05 @ 12:03:35

Job Ticket #: 26604 DST #: 1

DST # 1

15-135-24554-00-00

NE SE NE

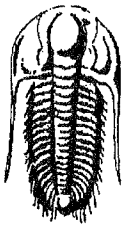
Miss

2006.11.05

Trilobite Testing, Inc

PO Box 362 Hays, KS 67601

ph: 785-625-4778 fax: 785-625-5620



TRILOBITE TESTING, INC

DRILL STEM TEST REPORT

Pickrell Drilling CO Inc

Betz E #3

100 S Main Ste 205
Wichita KS 67202

7 20 24 Ness KS

ATTN: Jerry Smith

Job Ticket: 26604

DST#: 1

Test Start: 2006.11.05 @ 04:00:26

GENERAL INFORMATION:

Formation: **Miss**

Deviated: No Whipstock: ft (KB)

Time Tool Opened: 05:38:51

Time Test Ended: 12:03:35

Test Type: Conventional Bottom Hole

Tester: Shane McBride

Unit No: Pickrell 10

Interval: **4348.00 ft (KB) To 4395.00 ft (KB) (TVD)**

Total Depth: 4395.00 ft (KB) (TVD)

Hole Diameter: 7.88 inches Hole Condition: Fair

Reference Elevations: 2336.00 ft (KB)

2331.00 ft (CF)

KB to GR/CF: 5.00 ft

Serial #: 6667 Inside

Press@RunDepth: 95.68 psig @ 4349.00 ft (KB)

Start Date: 2006.11.05

End Date: 2006.11.05

Start Time: 04:00:26

End Time: 12:03:35

Capacity: 7000.00 psig

Last Calib.: 2006.11.05

Time On Btm: 2006.11.05 @ 05:38:36

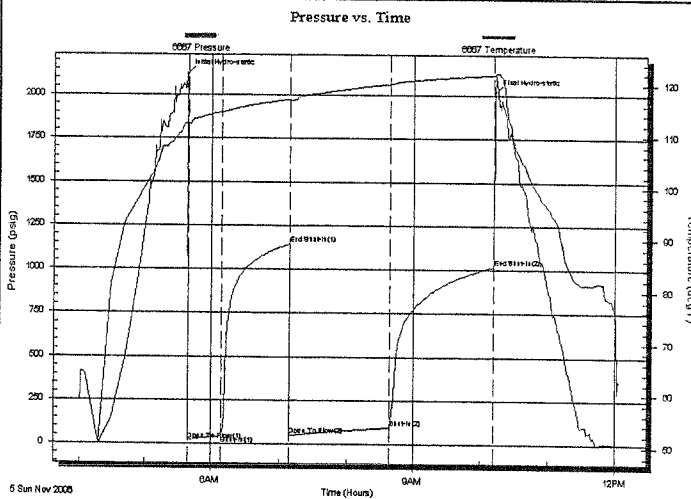
Time Off Btm: 2006.11.05 @ 10:12:06

TEST COMMENT: 7 1/2 " blow

No return

6 " blow

No return



PRESSURE SUMMARY

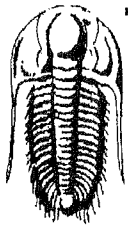
Time (Min.)	Pressure (psig)	Temp (deg F)	Annotation
0	2120.36	112.86	Initial Hydro-static
1	20.03	112.17	Open To Flow (1)
31	45.50	114.64	Shut-In(1)
90	1144.05	117.12	End Shut-In(1)
91	49.70	116.90	Open To Flow (2)
180	95.68	120.14	Shut-In(2)
273	1016.16	121.93	End Shut-In(2)
274	2015.60	122.12	Final Hydro-static

Recovery

Length (ft)	Description	Volume (bbl)
85.00	clean Oil	1.19
60.00	sl MCGassyOil 10%G 15%M 75%O	0.84
60.00	OCGM 20%O 10%G 70%M	0.84
0.00	60' Gip	0.00

Gas Rates

Choke (Inches)	Pressure (psig)	Gas Rate (Mcf/d)



TRILOBITE
TESTING, INC

DRILL STEM TEST REPORT

TOOL DIAGRAM

Pickrell Drilling CO Inc

Betz E #3

100 S Main Ste 205
Wichita KS 67202

7 20 24 Ness KS

Job Ticket: 26604

DST#: 1

ATTN: Jerry Smith

Test Start: 2006.11.05 @ 04:00:26

Tool Information

Drill Pipe:	Length: 4333.00 ft	Diameter: 3.80 inches	Volume: 60.78 bbl	Tool Weight: 1500.00 lb
Heavy Wt. Pipe:	Length: 0.00 ft	Diameter: 0.00 inches	Volume: 0.00 bbl	Weight set on Packer: 25000.00 lb
Drill Collar:	Length: 0.00 ft	Diameter: 2.25 inches	Volume: 0.00 bbl	Weight to Pull Loose: 65000.00 lb
			<u>Total Volume: 60.78 bbl</u>	Tool Chased 0.00 ft
Drill Pipe Above KB:	6.00 ft			String Weight: Initial 52000.00 lb
Depth to Top Packer:	4348.00 ft			Final 53000.00 lb
Depth to Bottom Packer:	ft			
Interval between Packers:	47.00 ft			
Tool Length:	68.00 ft			
Number of Packers:	2	Diameter: 6.75 inches		

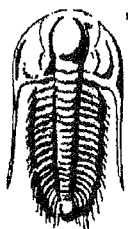
Tool Comments:

Tool Description

Length (ft) Serial No. Position Depth (ft) Accum. Lengths

Tool Description	Length (ft)	Serial No.	Position	Depth (ft)	Accum. Lengths
Shut In Tool	5.00			4332.00	
Hydraulic tool	5.00			4337.00	
Safety Joint	2.00			4339.00	
Packer	5.00			4344.00	21.00 Bottom Of Top Packer
Packer	4.00		Inside	4348.00	
Stubb	1.00			4349.00	
Recorder	0.00	6667	Inside	4349.00	
Perforations	8.00			4357.00	
Change Over Sub	1.00			4358.00	
Drill Pipe	31.00			4389.00	
Change Over Sub	1.00			4390.00	
Recorder	0.00	11058		4390.00	
Bullnose	5.00			4395.00	47.00 Bottom Packers & Anchor

Total Tool Length: 68.00



**TRILOBITE
TESTING, INC**

DRILL STEM TEST REPORT

FLUID SUMMARY

Fickrell Drilling CO Inc

Betz E #3

100 S Main Ste 205
Wichita KS 67202

7 20 24 Ness KS

Job Ticket: 26604

DST#: 1

ATTN: Jerry Smith

Test Start: 2006.11.05 @ 04:00:26

Mud and Cushion Information

Mud Type: Gel Chem

Cushion Type:

Oil API:

38 deg API

Mud Weight: 9.00 lb/gal

Cushion Length:

ft

Water Salinity:

ppm

Viscosity: 47.00 sec/qt

Cushion Volume:

bbbl

Water Loss: 7.97 in³

Gas Cushion Type:

Resistivity: 0.00 ohm.m

Gas Cushion Pressure:

psig

Salinity: 2200.00 ppm

Filter Cake: 2.00 inches

Recovery Information

Recovery Table

Length ft	Description	Volume bbbl
85.00	clean Oil	1.192
60.00	sl MCGassyOil 10%G 15%M 75%O	0.842
60.00	OCGM 20%O 10%G 70%M	0.842
0.00	60' Gp	0.000

Total Length: 205.00 ft

Total Volume: 2.876 bbl

Num Fluid Samples: 0

Num Gas Bombs: 0

Serial #:

Laboratory Name:

Laboratory Location:

Recovery Comments: 39@75

DST Test Number: 1

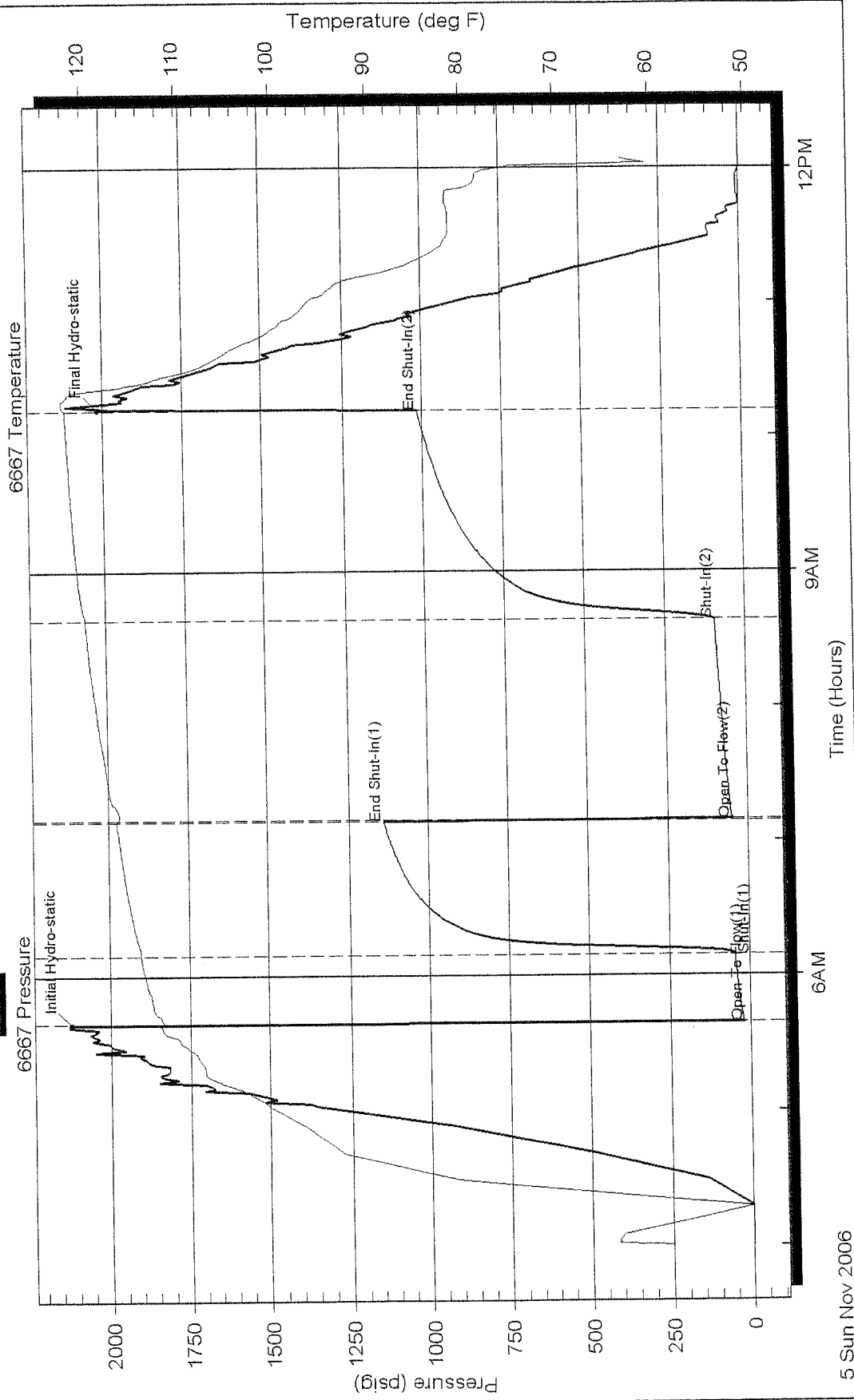
7 20 24 Ness KS

Fickrell Drilling CO Inc

Inside

Serial #: 6667

Pressure vs. Time



5 Sun Nov 2006

Ref. No: 26604

Printed: 2006.11.07 @ 13:31:50 Page 5

Trilobite Testing, Inc