

**TRILOBITE
TESTING, INC.**

DRILL STEM TEST REPORT

Prepared For: **McCoy Petroleum Corporation**

P.O. Box 780208
Wichita KS 67278-0208

ATTN: Dave Clothier

27-20S-25W Ness KS

Fehrenbach A #1-27

Start Date: 2002.06.06 @ 15:12:26

End Date: 2002.06.06 @ 22:25:26

Job Ticket #: 15071 DST #: 1

Trilobite Testing, Inc

PO Box 362 Hays, KS 67601

ph: 785-625-4778 fax: 785-625-5620

Printed: 2002.06.11 @ 10:45:21 Page 1

McCoy Petroleum Corporation

Fehrenbach A #1-27

27-20S-25W Ness KS

DST # 1

Mississippian

2002.06.06



**TRILOBITE
TESTING, INC.**

DRILL STEM TEST REPORT

McCoy Petroleum Corporation

Fehrenbach A #1-27

P.O. Box 780208
Wichita KS 67278-0208

27-20S-25W Ness KS

Job Ticket: 15071 DST#: 1

ATTN: Dave Clothier

Test Start: 2002.06.06 @ 15:12:26

GENERAL INFORMATION:

Formation: **Mississippian**

Deviated: No Whipstock: ft (KB)

Time Tool Opened: 17:22:56

Time Test Ended: 22:25:26

Test Type: Conventional Bottom Hole

Tester: Rod Steinbrink

Unit No: 22

Interval: **4410.00 ft (KB) To 4470.00 ft (KB) (TVD)**

Reference Elevations: 2408.00 ft (KB)

Total Depth: 4470.00 ft (KB) (TVD)

2400.00 ft (CF)

Hole Diameter: 7.88 inches Hole Condition: Fair

KB to GR/CF: 8.00 ft

Serial #: 3030

Inside

Press@RunDepth: 141.85 psig @ 4411.00 ft (KB)

Capacity: 7000.00 psig

Start Date: 2002.06.06

End Date: 2002.06.06

Last Calib.: 1899.12.30

Start Time: 15:12:28

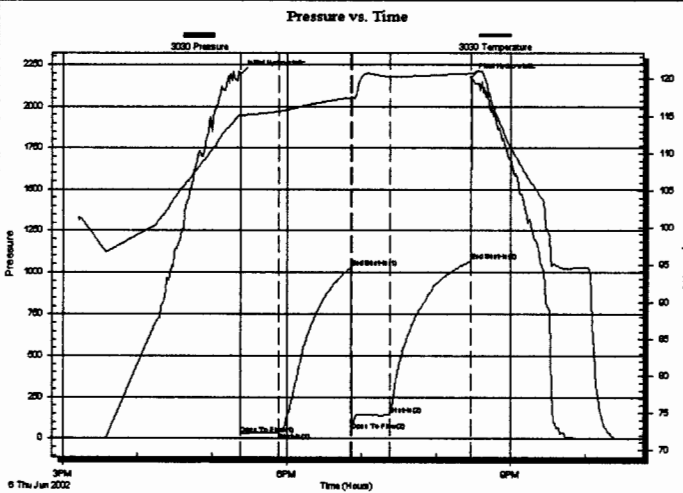
End Time: 22:25:26

Time On Btm: 2002.06.06 @ 17:22:41

Time Off Btm: 2002.06.06 @ 20:28:26

TEST COMMENT: F; Weak surface blow died in 15 mins.

FF; Weak return built to 3" @ 5 mins (losing fluid on backside) then decreased to 1/2"



PRESSURE SUMMARY

Time (Min.)	Pressure (psig)	Temp (deg F)	Annotation
0	2192.30	115.15	Initial Hydro-static
1	24.35	115.16	Open To Flow (1)
31	37.03	115.67	Shut-in(1)
89	1026.62	117.52	End Shut-in(1)
90	47.59	117.53	Open To Flow (2)
121	141.85	120.25	Shut-in(2)
186	1068.57	120.73	End Shut-in(2)
186	2174.26	120.75	Final Hydro-static

Recovery

Length (ft)	Description	Volume (bbl)
260.00	Slightly Oil Spotted Mud 1%oil 99%mud	1.46

Gas Rates

Choke (Inches)	Pressure (psig)	Gas Rate (Mcf/d)



**TRILOBITE
TESTING, INC.**

DRILL STEM TEST REPORT

TOOL DIAGRAM

McCoy Petroleum Corporation

Fehrenbach A #1-27

P.O. Box 780208
Wichita KS 67278-0208

27-20S-25W Ness KS

Job Ticket: 15071

DST#: 1

ATTN: Dave Clothier

Test Start: 2002.06.06 @ 15:12:26

Tool Information

Drill Pipe:	Length: 4159.00 ft	Diameter: 3.80 inches	Volume: 58.34 bbl	Tool Weight: 2000.00 lb
Heavy Wt. Pipe:	Length: 0.00 ft	Diameter: 0.00 inches	Volume: 0.00 bbl	Weight set on Packer: 25000.00 lb
Drill Collar:	Length: 240.00 ft	Diameter: 2.25 inches	Volume: 1.18 bbl	Weight to Pull Loose: 80000.00 lb
			<u>Total Volume: 59.52 bbl</u>	Tool Chased 0.00 ft
Drill Pipe Above KB:	9.00 ft			String Weight: Initial 60000.00 lb
Depth to Top Packer:	4410.00 ft			Final 60000.00 lb
Depth to Bottom Packer:	ft			
Interval between Packers:	60.00 ft			
Tool Length:	80.00 ft			
Number of Packers:	2	Diameter: 6.75 inches		

Tool Comments:

Tool Description

Tool Description	Length (ft)	Serial No.	Position	Depth (ft)	Accum. Lengths
S.I. Tool	5.00			4395.00	
HMV	5.00			4400.00	
Packer	5.00			4405.00	20.00 Bottom Of Top Packer
Packer	5.00			4410.00	
Stubb	1.00			4411.00	
Recorder	0.00	3030	Inside	4411.00	
Perforations	21.00			4432.00	
C.O. Sub	1.00			4433.00	
Anchor	31.00			4464.00	
C.O. Sub	1.00			4465.00	
Recorder	0.00	13371	Outside	4465.00	
Bullnose	5.00			4470.00	60.00 Bottom Packers & Anchor

Total Tool Length: 80.00



**TRIOBITE
TESTING, INC**

DRILL STEM TEST REPORT

FLUID SUMMARY

McCoy Petroleum Corporation

Fehrenbach A #1-27

P.O. Box 780208
Wichita KS 67278-0208

27-20S-25W Ness KS

Job Ticket: 15071 **DST#: 1**

ATTN: Dave Clothier

Test Start: 2002.06.06 @ 15:12:26

Mud and Cushion Information

Mud Type: Gel Chem

Cushion Type:

Oil API:

deg API

Mud Weight: 10.00 lb/gal

Cushion Length: ft

Water Salinity: ppm

Viscosity: 44.00 sec/qt

Cushion Volume: bbl

Water Loss: 9.58 in³

Gas Cushion Type:

Resistivity: ohm.m

Gas Cushion Pressure: psig

Salinity: 3100.00 ppm

Filter Cake: inches

Recovery Information

Recovery Table

Length ft	Description	Volume bbl
260.00	Slightly Oil Spotted Mud 1%oil 99%mud	1.461

Total Length: 260.00 ft Total Volume: 1.461 bbl

Num Fluid Samples: 0

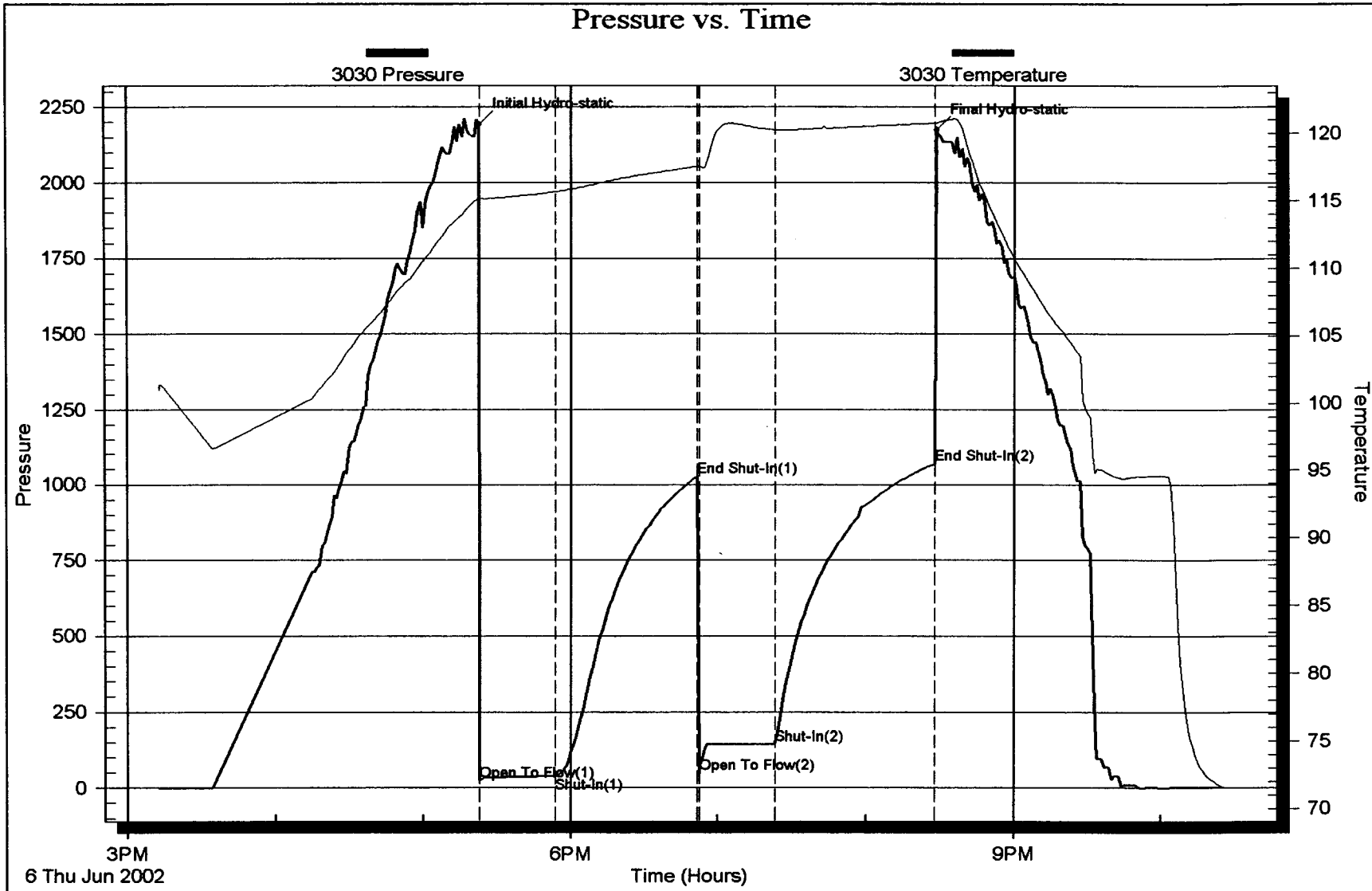
Num Gas Bombs: 0

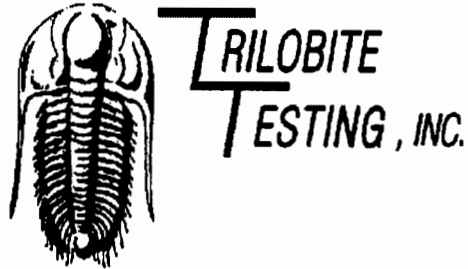
Serial #:

Laboratory Name:

Laboratory Location:

Recovery Comments:





DRILL STEM TEST REPORT

Prepared For: **McCoy Petroleum Corporation**

P.O. Box 780208
Wichita KS 67278-0208

ATTN: Dave Clothier

27-20S-25W Ness KS

Fehrenbach A #1-27

Start Date: 2002.06.07 @ 07:40:26

End Date: 2002.06.07 @ 16:14:26

Job Ticket #: 15072 DST #: 2

Trilobite Testing, Inc
PO Box 362 Hays, KS 67601
ph: 785-625-4778 fax: 785-625-5620



**TRILOBITE
TESTING, INC.**

DRILL STEM TEST REPORT

TOOL DIAGRAM

McCoy Petroleum Corporation

Fehrenbach A #1-27

P.O. Box 780208
Wichita KS 67278-0208

27-20S-25W Ness KS

Job Ticket: 15072

DST#: 2

ATTN: Dave Clothier

Test Start: 2002.06.07 @ 07:40:26

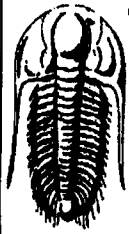
Tool Information

Drill Pipe:	Length: 4213.00 ft	Diameter: 3.80 inches	Volume: 59.10 bbl	Tool Weight: 2000.00 lb
Heavy Wt. Pipe:	Length: 0.00 ft	Diameter: 0.00 inches	Volume: 0.00 bbl	Weight set on Packer: 25000.00 lb
Drill Collar:	Length: 240.00 ft	Diameter: 2.25 inches	Volume: 1.18 bbl	Weight to Pull Loose: 90000.00 lb
			<u>Total Volume: 60.28 bbl</u>	Tool Chased 0.00 ft
Drill Pipe Above KB:	9.00 ft			String Weight: Initial 60000.00 lb
Depth to Top Packer:	4464.00 ft			Final 60000.00 lb
Depth to Bottom Packer:	ft			
Interval between Packers:	16.00 ft			
Tool Length:	36.00 ft			
Number of Packers:	2	Diameter: 6.75 inches		

Tool Comments:

Tool Description

Tool Description	Length (ft)	Serial No.	Position	Depth (ft)	Accum. Lengths
S.I. Tool	5.00			4449.00	
HMV	5.00			4454.00	
Packer	5.00			4459.00	20.00 Bottom Of Top Packer
Packer	5.00			4464.00	
Stubb	1.00			4465.00	
Recorder	0.00	3030	Inside	4465.00	
Perforations	10.00			4475.00	
Recorder	0.00	13371	Outside	4475.00	
Bullnose	5.00			4480.00	16.00 Bottom Packers & Anchor
Total Tool Length:	36.00				



**TRILOBITE
TESTING, INC.**

DRILL STEM TEST REPORT

FLUID SUMMARY

McCoy Petroleum Corporation

Fehrenbach A #1-27

P.O. Box 780208
Wichita KS 67278-0208

27-20S-25W Ness KS

Job Ticket: 15072 DST#: 2

ATTN: Dave Clothier

Test Start: 2002.06.07 @ 07:40:26

Mud and Cushion Information

Mud Type: Gel Chem

Cushion Type:

Oil API:

35 deg API

Mud Weight: 10.00 lb/gal

Cushion Length:

ft

Water Salinity:

ppm

Viscosity: 46.00 sec/qt

Cushion Volume:

bbl

Water Loss: 9.29 in³

Gas Cushion Type:

Resistivity: ohm.m

Gas Cushion Pressure:

psig

Salinity: 3100.00 ppm

Filter Cake: inches

Recovery Information

Recovery Table

Length ft	Description	Volume bbl
180.00	CGO 15%gas 85%oil	0.885
70.00	HOCM 5%gas 20%oil 75%mud	0.435

Total Length: 250.00 ft Total Volume: 1.320 bbl

Num Fluid Samples: 0

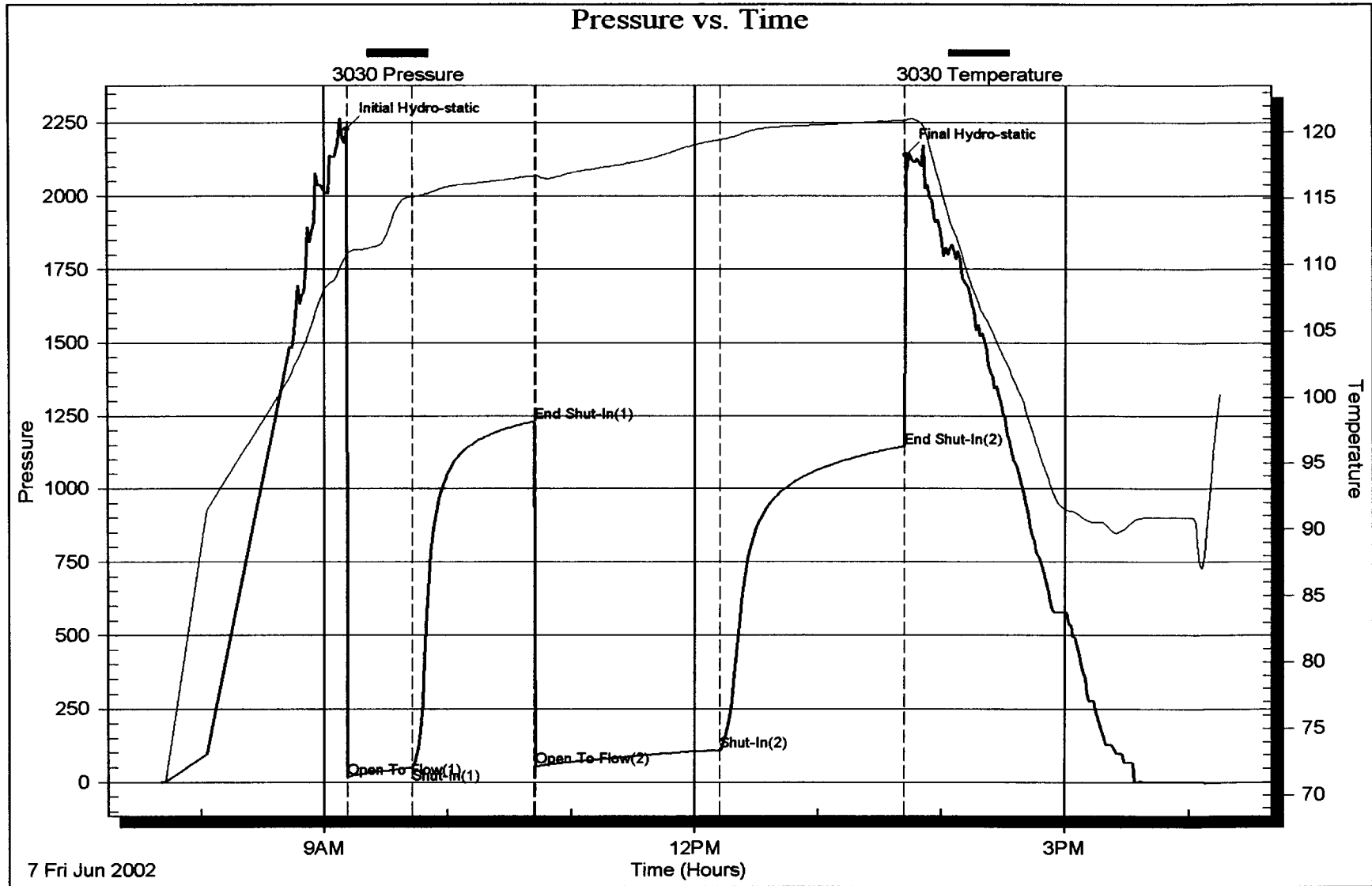
Num Gas Bombs: 0

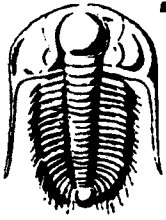
Serial #:

Laboratory Name:

Laboratory Location:

Recovery Comments:





TRILOBITE TESTING INC.

P.O. Box 362 • Hays, Kansas 67601

No 15071

Test Ticket

Well Name & No. Fehrenbach A #1-27 Test No. 1 Date 6-6-02
 Company McCoy Petroleum Corporation Zone Tested Mississippian
 Address P.O. Box 780208 Wichita, KS 67278-0208 Elevation 2408 KB 2400 GL
 Co. Rep / Geo. Dave Clothier Cont. Sterling #1 Est. Ft. of Pay Por. %
 Location: Sec. 27 Twp. 20^S Rge. 25^W Co. Ness State KS
 No. of Copies Distribution Sheet (Y, N) Turnkey (Y, N) Evaluation (Y, N)

Interval Tested 4410 - 4470 Initial Str Wt./Lbs. 60,000 Unseated Str Wt./Lbs. 60,000
 Anchor Length 60' Wt. Set Lbs. 25,000 Wt. Pulled Loose/Lbs. 80,000
 Top Packer Depth 4405 Tool Weight 2,000
 Bottom Packer Depth 4410 Hole Size — 7 7/8" Rubber Size — 6 3/4"
 Total Depth 4470 Wt. Pipe Run Drill Collar Run 240'
 Mud Wt. 9.5 LCM Vis. 44 WL 9.6 Drill Pipe Size 4 1/2" Ft. Run 4159'
 Blow Description IF: Weak surface blow died in 15 mins

FF: Weak return built to 3" @ 5 mins (losing fluid on backside) then decreased to 1/2"

Recovery — Total Feet 260' GIP Ft. in DC 240' Ft. in DP 20'
 Rec. Feet Of %gas %oil %water %mud
 Rec. Feet Of %gas %oil %water %mud
 Rec. 260' Feet Of Slightly Oil Spotted M %gas 1 %oil %water 99 %mud
 Rec. Feet Of %gas %oil %water %mud
 Rec. Feet Of %gas %oil %water %mud
 BHT 120° °F Gravity °API D@ °F Corrected Gravity °API
 RW @ °F Chlorides ppm Recovery Chlorides 3,100 ppm System

	AK-1	Alpine	Recorder No.	T-On Location
(A) Initial Hydrostatic Mud	<u>2194</u>	PSI	<u>3030</u>	<u>1215</u>
(B) First Initial Flow Pressure	<u>24</u>	PSI	(depth) <u>4411</u>	T-Started <u>1512</u>
(C) First Final Flow Pressure	<u>36</u>	PSI	Recorder No. <u>13371</u>	T-Open <u>1722</u>
(D) Initial Shut-In Pressure	<u>1026</u>	PSI	(depth) <u>4465</u>	T-Pulled <u>2027</u>
(E) Second Initial Flow Pressure	<u>47</u>	PSI	Recorder No. <u> </u>	T-Out <u>2225</u>
(F) Second Final Flow Pressure	<u>142</u>	PSI	(depth) <u> </u>	T-Off Location <u>2330</u>
(G) Final Shut-in Pressure	<u>1067</u>	PSI	Initial Opening <u>30</u>	Test <u>800</u>
(Q) Final Hydrostatic Mud	<u>2163</u>	PSI	Initial Shut-in <u>60</u>	Jars <u> </u>
			Final Flow <u>30</u>	Safety Joint <u> </u>
			Final Shut-in <u>60</u>	Straddle <u> </u>

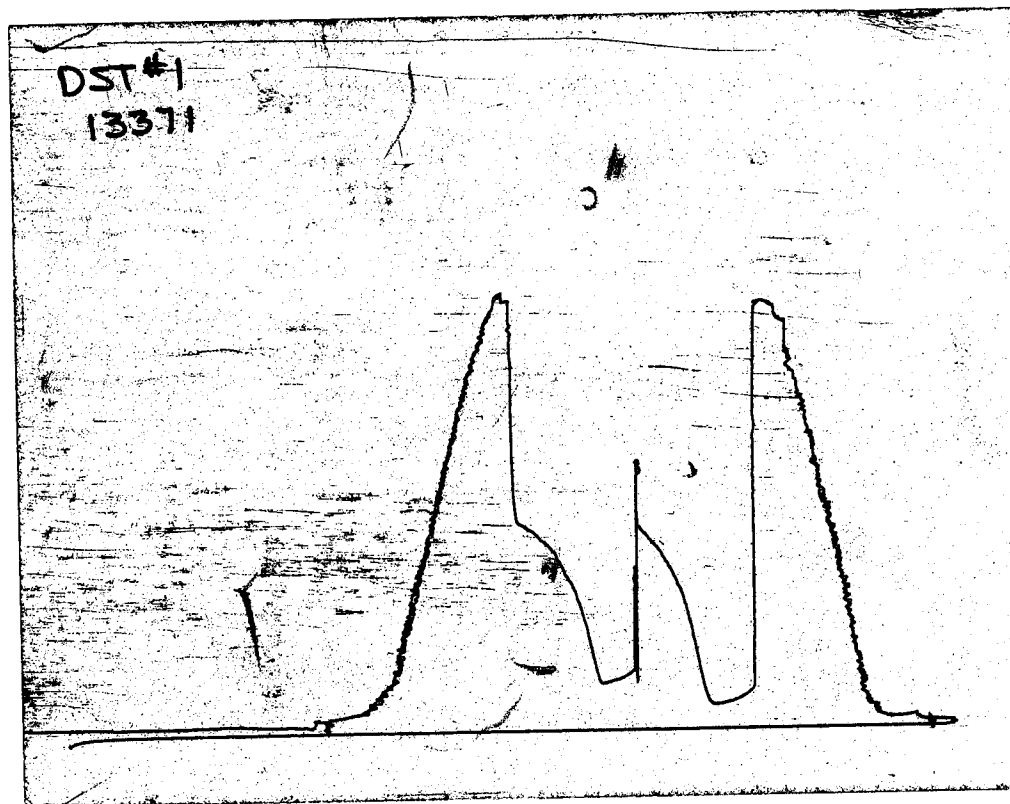
TRILOBITE TESTING INC. SHALL NOT BE LIABLE FOR DAMAGE OF ANY KIND OF THE PROPERTY OR PERSONNEL OF THE ONE FOR WHOM A TEST IS MADE, OR FOR ANY LOSS SUFFERED OR SUSTAINED, DIRECTLY OR INDIRECTLY, THROUGH THE USE OF ITS EQUIPMENT, OR ITS STATEMENTS OR OPINION CONCERNING THE RESULTS OF ANY TEST, TOOLS LOST OR DAMAGED IN THE HOLE SHALL BE PAID FOR AT COST BY THE PARTY FOR WHOM THE TEST IS MADE.

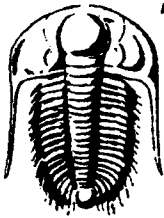
Approved By [Signature]
 Our Representative Rod Steinbrink

Circ. Sub X n/c
 Sampler
 Extra Packer
 Elec. Rec. X 150
 Mileage 59
 Other 1 hr 30
 TOTAL PRICE \$ 1039

CHART PAGE

This is a photocopy of the actual AK-1 recorder chart





TRILOBITE TESTING INC.

P.O. Box 362 • Hays, Kansas 67601

No 15072

Test Ticket

Well Name & No. Fehrenbach A #1-27 Test No. 2 Date 6-7-02
 Company McCoy Petroleum Corporation Zone Tested Mississippian
 Address P.O. Box 780208 Wichita, KS. 67278-0208 Elevation 2408 KB 2400 GL
 Co. Rep / Geo. Dave Clothier Cont. Sterling #1 Est. Ft. of Pay Por. %
 Location: Sec. 27 Twp. 20^S Rge. 25^W Co. Ness State KS.
 No. of Copies Distribution Sheet (Y, N) Turnkey (Y, N) Evaluation (Y, N)

Interval Tested 4464 - 4480 Initial Str Wt./Lbs. 60,000 Unseated Str Wt./Lbs. 60,000
 Anchor Length 16' Wt. Set Lbs. 25,000 Wt. Pulled Loose/Lbs. 90,000
 Top Packer Depth 4459 Tool Weight 2,000
 Bottom Packer Depth 4464 Hole Size — 7 7/8" Rubber Size — 6 3/4"
 Total Depth 4480 Wt. Pipe Run Drill Collar Run 240'
 Mud Wt. 9.5 LCM Vis. 46 WL 9.3 Drill Pipe Size 4 1/2" X 14 Ft. Run 4213'
 Blow Description 1F: Weak surface blow built to 1".

FF: Weak surface return steady thru.

Recovery — Total Feet 250' GIP Ft. in DC 240' Ft. in DP 10'

Rec.	Feet Of	%gas	%oil	%water	%mud
Rec. <u>180'</u>	Feet Of <u>CGO</u>	<u>15</u>	<u>85</u>	<u> </u>	<u> </u>
Rec. <u>70'</u>	Feet Of <u>HOCM</u>	<u>5</u>	<u>20</u>	<u> </u>	<u>75</u>

 BHT °F Gravity 39 °API D@ 100° °F Corrected Gravity 35 °API
 RW @ °F Chlorides ppm Recovery Chlorides 3,100 ppm System

	AK-1	Alpine	PSI	Recorder No.	T-On Location
(A) Initial Hydrostatic Mud	<u>2261</u>	<u> </u>	<u> </u>	<u>3030</u>	<u>0700</u>
(B) First Initial Flow Pressure	<u>16</u>	<u> </u>	<u> </u>	<u>4465</u>	<u>0740</u>
(C) First Final Flow Pressure	<u>47</u>	<u> </u>	<u> </u>	<u>13371</u>	<u>0911</u>
(D) Initial Shut-In Pressure	<u>1230</u>	<u> </u>	<u> </u>	<u>4475</u>	<u>1341</u>
(E) Second Initial Flow Pressure	<u>52</u>	<u> </u>	<u> </u>	<u> </u>	<u>1614</u>
(F) Second Final Flow Pressure	<u>106</u>	<u> </u>	<u> </u>	<u> </u>	<u>1715</u>
(G) Final Shut-in Pressure	<u>1142</u>	<u> </u>	<u> </u>	<u>30</u>	<u>800</u>
(Q) Final Hydrostatic Mud	<u>2156</u>	<u> </u>	<u> </u>	<u>60</u>	<u> </u>

Final Flow 90 Safety Joint
 Final Shut-in 90 Straddle
 Circ. Sub X N/C
 Sampler
 Extra Packer
 Elec. Rec. X 150
 Mileage 59
 Other
 TOTAL PRICE \$ 1009

TRILOBITE TESTING INC. SHALL NOT BE LIABLE FOR DAMAGE OF ANY KIND OF THE PROPERTY OR PERSONNEL OF THE ONE FOR WHOM A TEST IS MADE, OR FOR ANY LOSS SUFFERED OR SUSTAINED, DIRECTLY OR INDIRECTLY, THROUGH THE USE OF ITS EQUIPMENT OR ITS STATEMENTS OR OPINION CONCERNING THE RESULTS OF ANY TEST. TOOLS LOST OR DAMAGED IN THE HOLE SHALL BE PAID FOR AT COST BY THE PARTY FOR WHOM THE TEST IS MADE.

Approved By [Signature]

Our Representative Rod Steinbrink

10:15
9:14

CHART PAGE

This is a photocopy of the actual AK-1 recorder chart

