

4-20s-25w

15-135-24756 ✓



DIAMOND TESTING

P.O. Box 157

HOISINGTON, KANSAS 67544

(620) 653-7550 • (800) 542-7313

Company L. D. Drilling, Inc. Lease & Well No. Grace No. 1

Elevation 2427 KB Formation Mississippi Effective Pay -- Ft. Ticket No. C39

Date 3-20-08 Sec. 4 Twp. 20S Range 25W County Ness State Kansas

Test Approved By Kim B. Shoemaker Diamond Representative Chris Redetzke

Formation Test No. 1 Interval Tested from 4,400 ft. to 4,478 ft. Total Depth 4,478 ft.

Packer Depth 4,395 ft. Size 6 3/4 in. Packer Depth -- ft. Size -- in.

Packer Depth 4,400 ft. Size 6 3/4 in. Packer Depth -- ft. Size -- in.

Depth of Selective Zone Set ft.

Top Recorder Depth (Inside) 4,405 ft. Recorder Number 30035 Cap. 5,000 psi

Bottom Recorder Depth (Outside) 4,475 ft. Recorder Number 13387 Cap. 4,000 psi

Below Straddle Recorder Depth ft. Recorder Number Cap. psi

Drilling Contractor L. D. Drilling, Inc. - Rig 1 Drill Collar Length -- ft. I.D. -- in.

Mud Type Chemical Viscosity 50 Weight Pipe Length -- ft. I.D. -- in.

Weight 9.3 Water Loss 10.4 cc. Drill Pipe Length 4,373 ft. I.D. 3 1/2 in.

Chlorides 4,000 P.P.M. Test Tool Length 27 ft. Tool Size 3 1/2 - IF in.

Jars: Make Sterling Serial Number 1 Anchor Length 78 ft. Size 4 1/2 - FH in.

Did Well Flow? No Reversed Out No Surface Choke Size 1 in. Bottom Choke Size 5/8 in.

Main Hole Size 7 7/8 in. Tool Joint Size 4 1/2 - XH in.

Blow: 1st Open: Weak, 1/2 in., blow increasing to 2 1/2 ins. No blow back during shut-in.

2nd Open: Weak, 1/2 in., blow increasing to 3 1/2 ins. Very weak surface blow back during shut-in.

Recovered 1 ft. of free oil = .010260 bbls.

Recovered 79 ft. of slightly oil specked mud = .810540 bbls. (Grind out: 2%-oil; 98%-mud)

Recovered 80 ft. of TOTAL FLUID = .820800 bbls.

Recovered ft. of

Recovered ft. of

Remarks Tool Sample Grind Out: 5%-oil; 95%-mud

Time Set Packer(s) 1:50 ~~A.M.~~ P.M. Time Started Off Bottom 4:50 ~~A.M.~~ P.M. Maximum Temperature 116°

Initial Hydrostatic Pressure (A) 2207 P.S.I.

Initial Flow Period Minutes 30 (B) 33 P.S.I. to (C) 49 P.S.I.

Initial Closed In Period Minutes 45 (D) 1176 P.S.I.

Final Flow Period Minutes 45 (E) 50 P.S.I. to (F) 69 P.S.I.

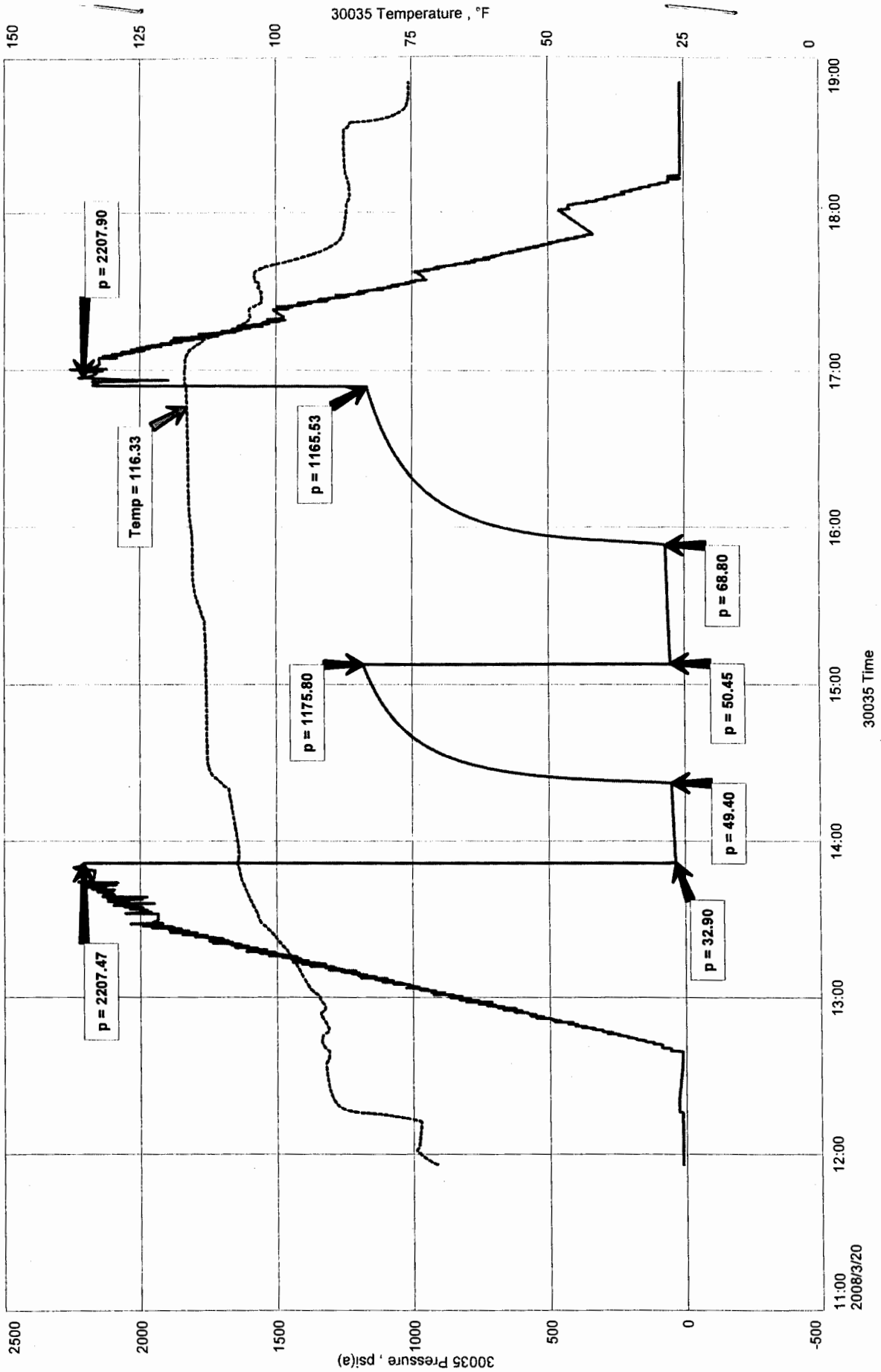
Final Closed In Period Minutes 60 (G) 1166 P.S.I.

Final Hydrostatic Pressure (H) 2208 P.S.I.

L.D. DRILLING INC.
DST #1 MISSISSIPPI 4,400 - 4,478
Start Test Date: 2008/03/20
Final Test Date: 2008/03/20

GRACE #
Formation: DST #1 MISSISSIPPI 4,400 - 4,478
Pool: WILDCA

GRACE #1





DIAMOND TESTING

P.O. Box 157

HOISINGTON, KANSAS 67544

(620) 653-7550 • (800) 542-7313

Company L. D. Drilling, Inc. Lease & Well No. Grace No. 1

Elevation 2427 KB Formation Mississippi Effective Pay -- Ft. Ticket No. C40

Date 3-21-08 Sec. 4 Twp. 20S Range 25W County Ness State Kansas

Test Approved By Kim B. Shoemaker Diamond Representative Chris Redetzke

Formation Test No. 2 Interval Tested from 4,402 ft. to 4,483 ft. Total Depth 4,483 ft.

Packer Depth 4,397 ft. Size 6 3/4 in. Packer Depth -- ft. Size -- in.

Packer Depth 4,402 ft. Size 6 3/4 in. Packer Depth -- ft. Size -- in.

Depth of Selective Zone Set ft.

Top Recorder Depth (Inside) 4,407 ft. Recorder Number 30035 Cap. 5,000 psi

Bottom Recorder Depth (Outside) 4,480 ft. Recorder Number 13387 Cap. 4,000 psi

Below Straddle Recorder Depth ft. Recorder Number Cap. psi

Drilling Contractor L. D. Drilling, Inc. - Rig 1 Drill Collar Length -- ft. I.D. -- in.

Mud Type Chemical Viscosity 50 Weight Pipe Length -- ft. I.D. -- in.

Weight 9.3 Water Loss 10.4 cc. Drill Pipe Length 4,375 ft. I.D. 3 1/2 in.

Chlorides 4,000 P.P.M. Test Tool Length 27 ft. Tool Size 3 1/2 - IF in.

Jars: Make Sterling Serial Number 1 Anchor Length 81 ft. Size 4 1/2 - FH in.

Did Well Flow? No Reversed Out No Surface Choke Size 1 in. Bottom Choke Size 5/8 in.

Main Hole Size 7 7/8 in. Tool Joint Size 4 1/2 - XH in.

Blow: 1st Open: Fair, 1/2 in., blow increasing to 5 1/2 ins. No blow back during shut-in.

2nd Open: Weak, 1/2 in., blow increasing to 5 ins. No blow back during shut-in.

Recovered 2 ft. of free oil = .020520 bbls.

Recovered 108 ft. of slightly oil specked mud = 1.108080 bbls. (Grind out: 2%-oil; 98%-mud)

Recovered 110 ft. of TOTAL FLUID = 1.128600 bbls.

Recovered ft. of

Recovered ft. of

Remarks Tool Sample Grind Out: 2%-oil; 98%-mud

Time Set Packer(s) 3:28 ~~P.M.~~ ^{A.M.} Time Started Off Bottom 6:28 ~~P.M.~~ ^{A.M.} Maximum Temperature 116°

Initial Hydrostatic Pressure (A) 2245 P.S.I.

Initial Flow Period Minutes 30 (B) 34 P.S.I. to (C) 57 P.S.I.

Initial Closed In Period Minutes 45 (D) 1180 P.S.I.

Final Flow Period Minutes 45 (E) 59 P.S.I. to (F) 87 P.S.I.

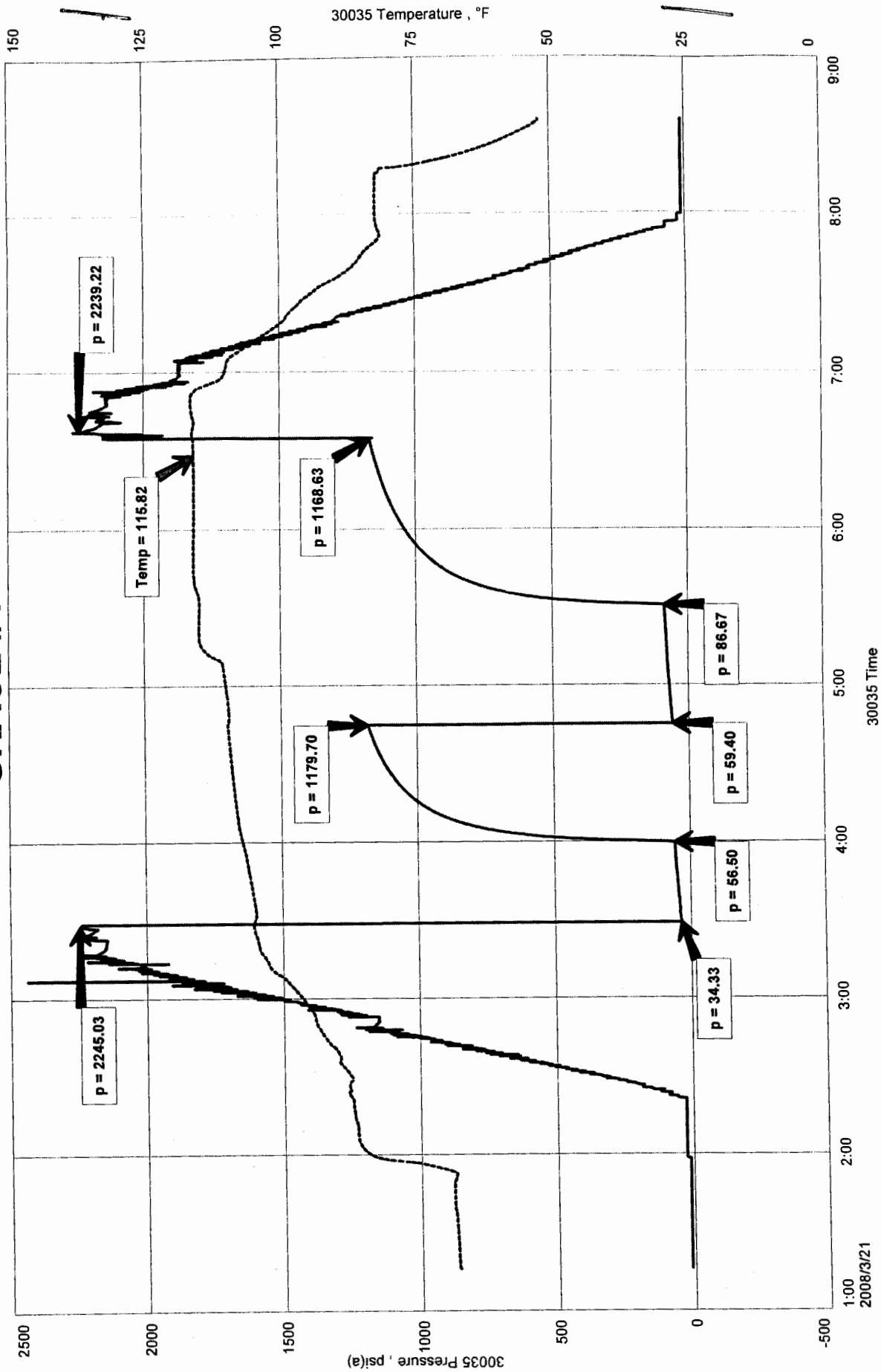
Final Closed In Period Minutes 60 (G) 1169 P.S.I.

Final Hydrostatic Pressure (H) 2239 P.S.I.

GRACE #1
Formation: DST #2 MISSISSIPPI 4,402 - 4,483
Pool: WILDCAT

L.D. DRILLING INC.
DST #2 MISSISSIPPI 4,402 - 4,483
Start Test Date: 2008/03/21
Final Test Date: 2008/03/21

GRACE #1





DIAMOND TESTING
P.O. Box 157
HOISINGTON, KANSAS 67544
(620) 653-7550 • (800) 542-7313

Company L. D. Drilling, Inc. Lease & Well No. Grace No. 1

Elevation 2427 KB Formation Mississippi Effective Pay -- Ft. Ticket No. C41

Date 3-21-08 Sec. 4 Twp. 20S Range 25W County Ness State Kansas

Test Approved By Kim B. Shoemaker Diamond Representative Chris Redetzke

Formation Test No. 3 Interval Tested from 4,480 ft. to 4,488 ft. Total Depth 4,488 ft.

Packer Depth 4,475 ft. Size 6 3/4 in. Packer Depth -- ft. Size -- in.

Packer Depth 4,480 ft. Size 6 3/4 in. Packer Depth -- ft. Size -- in.

Depth of Selective Zone Set ft.

Top Recorder Depth (Inside) 4,467 ft. Recorder Number 30035 Cap. 5,000 psi

Bottom Recorder Depth (Outside) 4,485 ft. Recorder Number 13387 Cap. 4,000 psi

Below Straddle Recorder Depth ft. Recorder Number Cap. psi

Drilling Contractor L. D. Drilling, Inc. - Rig 1 Drill Collar Length -- ft. I.D. -- in.

Mud Type Chemical Viscosity 50 Weight Pipe Length -- ft. I.D. -- in.

Weight 9.4 Water Loss 12.0 cc. Drill Pipe Length 4,449 ft. I.D. 3 1/2 in.

Chlorides 6,000 P.P.M. Test Tool Length 31 ft. Tool Size 3 1/2 - IF in.

Jars: Make Sterling Serial Number 1 Anchor Length 8 ft. Size 4 1/2 - FH in.

Did Well Flow? No Reversed Out No Surface Choke Size 1 in. Bottom Choke Size 5/8 in.

Main Hole Size 7 7/8 in. Tool Joint Size 4 1/2 - XH in.

Blow: 1st Open: Weak, surface blow increasing to 2 ins. No blow back during shut-in.

2nd Open: Weak, surface blow increasing to 2 ins. No blow back during shut-in.

Recovered 50 ft. of muddy water = .513000 bbls. (Grind out: 40%-mud; 60%-water) Chlorides: 35,000 Ppm

Recovered ft. of

Recovered ft. of

Recovered ft. of

Recovered ft. of

Remarks Tool Sample Grind Out: 30%-water; 30%-mud; 40%-oil

Time Set Packer(s) 4:45 ^{AM.} P.M. Time Started Off Bottom 7:45 ^{AM.} P.M. Maximum Temperature 116°

Initial Hydrostatic Pressure (A) 2246 P.S.I.

Initial Flow Period Minutes 30 (B) 20 P.S.I. to (C) 31 P.S.I.

Initial Closed In Period Minutes 45 (D) 1291 P.S.I.

Final Flow Period Minutes 45 (E) 32 P.S.I. to (F) 46 P.S.I.

GRACE #1
 Formation: DST #3 MISSISSIPPI 4,480 - 4,488
 Pool: WILDCAT

L.D. DRILLING INC.
 DST #3 MISSISSIPPI 4,480 - 4,488
 Start Test Date: 2008/03/21
 Final Test Date: 2008/03/21

GRACE #1

