

Company North American Drilling & Exploration, Inc. Lease & Well No. Weathers #1
 Elevation 1901 Kelly Bushing Formation Howard Effective Pay --- Ft. Ticket No. 3940
 Date 9/19/79 Sec. 26 Twp. 20S Range 14W County Barton State Kansas
 Test Approved by Marvin Frankamp Western Representative Roger Lisenby

Formation Test No. 1 Interval Tested from 2652 ft. to 2682 ft. Total Depth 2682 ft.
 Packer Depth 2647 ft. Size 6 3/4 in. Packer Depth 2652 ft. Size 6 3/4 in.
 Packer Depth - ft. Size - in. Packer Depth - ft. Size - in.
 Depth of Selective Zone Set ---

Top Recorder Depth (Inside) 2675 ft. Recorder Number 1051 Cap. 4250
 Bottom Recorder Depth (Outside) 2678 ft. Recorder Number 969 Cap. 4200
 Below Straddle Recorder Depth - ft. Recorder Number - Cap. -

Drilling Contractor B. & N. Drilling Drill Collar Length 449 I. D. 2 1/4 in.
 Mud Type premix=starch Viscosity 36 Weight Pipe Length - I. D. - in.
 Weight 9.5 Water Loss NC cc. Drill Pipe Length 2171 I. D. 3.8 in.
 Chlorides 68,000 P.P.M. Test Tool Length 32 ft. Tool Size 4 3/4 in.
 Jars: Make WTC Serial Number 410 Anchor Length 30 ft. Size 5 1/2 in.
 Did Well Flow? No Reversed Out No Surface Choke Size 3/4 in. Bottom Choke Size 3/4 in.
 Main Hole Size 7 7/8 in. Tool Joint Size 4 1/2 XH in.

Blow: Weak blow increasing to 3" deep in bucket first opening. Weak blow, increasing to 3" deep in bucket second opening.

Recovered 155 ft. of muddy water with few oil spots.
 Recovered ft. of
 Recovered ft. of
 Recovered ft. of
 Recovered ft. of
 Remarks: Plugging in first opening.

Time Set Packer(s) 8:57 A.M. Time Started Off Bottom 10:59 P.M. Maximum Temperature 98
 Initial Hydrostatic Pressure 1447 (A) P.S.I.
 Initial Flow Period 30 (B) 122 P.S.I. to (C) 110 P.S.I.
 Initial Closed In Period 33 (D) 985 P.S.I.
 Final Flow Period 30 (E) 105 P.S.I. to (F) 114 P.S.I.
 Final Closed In Period 33 (G) 955 P.S.I.
 Final Hydrostatic Pressure 1417 (H) P.S.I.

WESTERN TESTING CO., INC.
Pressure Data

Date 9/19/79 Test Ticket No. 3940
 Recorder No. 1051 Capacity 4250 Location 2675 Ft.
 Clock No. -- Elevation 1901 Kelly Bushing Well Temperature 98 °F

Point	Pressure		Time Given	Time Computed
A Initial Hydrostatic Mud	1447	P.S.I.	8:57A	M
B First Initial Flow Pressure	122	P.S.I.	30	Mins. 30 Mins.
C First Final Flow Pressure	110	P.S.I.	30	Mins. 33 Mins.
D Initial Closed-in Pressure	985	P.S.I.	30	Mins. 30 Mins.
E Second Initial Flow Pressure	105	P.S.I.	30	Mins. 33 Mins.
F Second Final Flow Pressure	114	P.S.I.		
G Final Closed-in Pressure	955	P.S.I.		
H Final Hydrostatic Mud	1417	P.S.I.		

PRESSURE BREAKDOWN

First Flow Pressure
 Breakdown: 6 Inc.
 of 5 mins. and a
 final inc. of 0 Min.

Initial Shut-In
 Breakdown: 11 Inc.
 of 3 mins. and a
 final inc. of 0 Min.

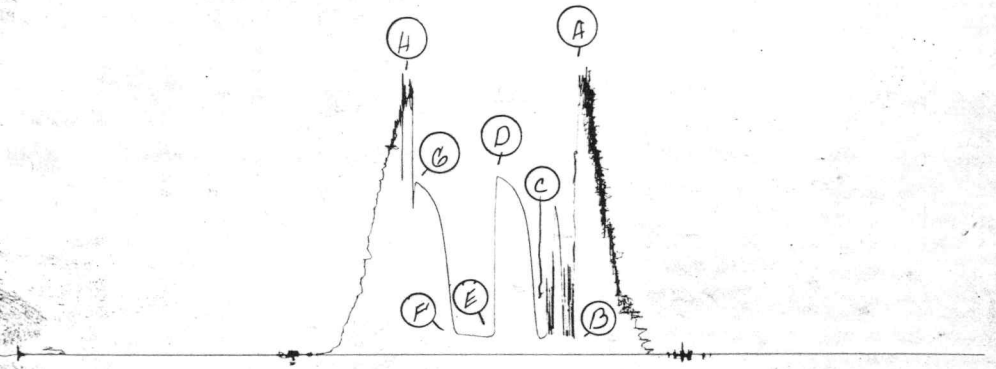
Second Flow Pressure
 Breakdown: 6 Inc.
 of 5 mins. and a
 final inc. of 0 Min.

Final Shut-In
 Breakdown: 11 Inc.
 of 3 mins. and a
 final inc. of 0 Min.

Point Mins.	Press.	Point Minutes	Press.	Point Minutes	Press.	Point Minutes	Press.
P 1 0	122	0	110	0	105	0	114
P 2 5 Plugging action		3	269	5	99	3	170
P 3 10 Plugging action		6	478	10	101	6	338
P 4 15 Plugging action		9	651	15	105	9	498
P 5 20 Plugging action		12	774	20	108	12	640
P 6 25 Plugging action		15	836	25	111	15	744
P 7 30	110	18	887	30	114	18	813
P 8		21	921			21	857
P 9		24	944			24	894
P10		27	964			27	915
P11		30	976			30	934
P12		33	985			33	955
P13							
P14							
P15							
P16							
P17							
P18							
P19							
P20							

696
996

TKL # 3940
I



Company North American Drilling & Exploration, Inc. Lease & Well No. Weathers #1
 Elevation 1901 Kelly Bushing Formation Lansing Effective Pay -- Ft. Ticket No. 3941
 Date 9/22/79 Sec. 26 Twp. 20S Range 14W County Barton State Kansas
 Test Approved by Marvin Frankamp Western Representative Roger Lisenby

Formation Test No. 2 Interval Tested from 3290 ft. to 3353 ft. Total Depth 3353 ft.
 Packer Depth 3285 ft. Size 6 3/4 in. Packer Depth 3290 ft. Size 6 3/4 in.
 Packer Depth - ft. Size - in. Packer Depth - ft. Size - in.
 Depth of Selective Zone Set -

Top Recorder Depth (Inside) 3346 ft. Recorder Number 1051 Cap. 4250
 Bottom Recorder Depth (Outside) 3349 ft. Recorder Number 969 Cap. 4200
 Below Straddle Recorder Depth - ft. Recorder Number - Cap. -

Drilling Contractor B. & N. Drilling Rig #16 Drill Collar Length 422 I. D. 2 1/4 in.
 Mud Type starch Viscosity 44 Weight Pipe Length - I. D. - in.
 Weight 9.0 Water Loss ? cc. Drill Pipe Length 2836 I. D. 3.8 in.
 Chlorides 28,000 P.P.M. Test Tool Length 32 ft. Tool Size 4 3/4 in.
 Jars: Make WTC Serial Number 410 Anchor Length 63 ft. Size 5 1/2 in.
 Did Well Flow? No Reversed Out No Surface Choke Size 3/4 in. Bottom Choke Size 3/4 in.
 Main Hole Size 7 7/8 in. Tool Joint Size 4 1/2 XH in.

Blow: Weak blow throughout first opening. No blow second opening.

Recovered 40 ft. of mud with oil spots.
 Recovered ft. of
 Recovered ft. of
 Recovered ft. of
 Recovered ft. of

Remarks:

Time Set Packer(s) 1:13 A.M. Time Started Off Bottom 3:16 P.M. Maximum Temperature 105
 Initial Hydrostatic Pressure (A) 1664 P.S.I.
 Initial Flow Period Minutes 30 (B) 99 P.S.I. to (C) 84 P.S.I.
 Initial Closed In Period Minutes 30 (D) 100 P.S.I.
 Final Flow Period Minutes 30 (E) 97 P.S.I. to (F) 95 P.S.I.
 Final Closed In Period Minutes 30 (G) 95 P.S.I.
 Final Hydrostatic Pressure (H) 1613 P.S.I.

WESTERN TESTING CO., INC.
Pressure Data

Date 9/22/79

Test Ticket No. 3941

Recorder No. 1051

Capacity 4250

Location 3346 Ft.

Clock No. --

Elevation 1901 Kelly Bushing

Well Temperature 105 °F

Point	Pressure		Time Given	Time Computed
A Initial Hydrostatic Mud	<u>1664</u> P.S.I.	Open Tool	<u>1:13A</u> M	
B First Initial Flow Pressure	<u>99</u> P.S.I.	First Flow Pressure	<u>30</u> Mins.	<u>30</u> Mins.
C First Final Flow Pressure	<u>84</u> P.S.I.	Initial Closed-in Pressure	<u>30</u> Mins.	<u>30</u> Mins.
D Initial Closed-in Pressure	<u>100</u> P.S.I.	Second Flow Pressure	<u>30</u> Mins.	<u>30</u> Mins.
E Second Initial Flow Pressure	<u>97</u> P.S.I.	Final Closed-in Pressure	<u>30</u> Mins.	<u>30</u> Mins.
F Second Final Flow Pressure	<u>95</u> P.S.I.			
G Final Closed-in Pressure	<u>95</u> P.S.I.			
H Final Hydrostatic Mud	<u>1613</u> P.S.I.			

PRESSURE BREAKDOWN

First Flow Pressure
Breakdown: 6 Inc.
of 5 mins. and a
final inc. of 0 Min.

Initial Shut-In
Breakdown: 10 Inc.
of 3 mins. and a
final inc. of 0 Min.

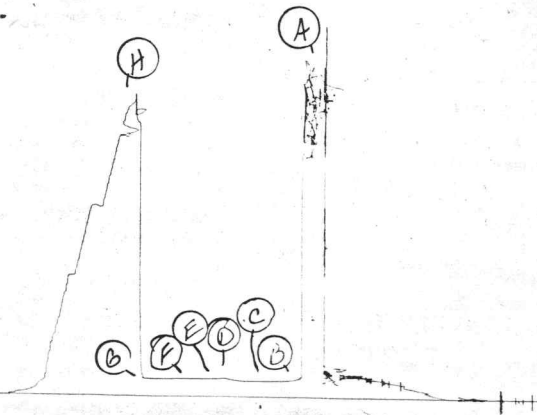
Second Flow Pressure
Breakdown: 6 Inc.
of 5 mins. and a
final inc. of 0 Min.

Final Shut-In
Breakdown: 10 Inc.
of 3 mins. and a
final inc. of 0 Min.

Point Mins.	Press.	Point Minutes	Press.	Point Minutes	Press.	Point Minutes	Press.
P 1 <u>0</u>	<u>99</u>	<u>0</u>	<u>84</u>	<u>0</u>	<u>97</u>	<u>0</u>	<u>95</u>
P 2 <u>5</u>	<u>92</u>	<u>3</u>	<u>84</u>	<u>5</u>	<u>95</u>	<u>3</u>	<u>95</u>
P 3 <u>10</u>	<u>87</u>	<u>6</u>	<u>84</u>	<u>10</u>	<u>95</u>	<u>6</u>	<u>95</u>
P 4 <u>15</u>	<u>84</u>	<u>9</u>	<u>84</u>	<u>15</u>	<u>95</u>	<u>9</u>	<u>95</u>
P 5 <u>20</u>	<u>84</u>	<u>12</u>	<u>84</u>	<u>20</u>	<u>95</u>	<u>12</u>	<u>95</u>
P 6 <u>25</u>	<u>84</u>	<u>15</u>	<u>86</u>	<u>25</u>	<u>95</u>	<u>15</u>	<u>95</u>
P 7 <u>30</u>	<u>84</u>	<u>18</u>	<u>88</u>	<u>30</u>	<u>95</u>	<u>18</u>	<u>95</u>
P 8 _____		<u>21</u>	<u>90</u>			<u>21</u>	<u>95</u>
P 9 _____		<u>24</u>	<u>94</u>			<u>24</u>	<u>95</u>
P10 _____		<u>27</u>	<u>97</u>			<u>27</u>	<u>95</u>
P11 _____		<u>30</u>	<u>100</u>			<u>30</u>	<u>95</u>
P12 _____							
P13 _____							
P14 _____							
P15 _____							
P16 _____							
P17 _____							
P18 _____							
P19 _____							
P20 _____							

TRK # 3941

±



1091

Company North American Drilling & Exploration, Inc. Lease & Well No. Weathers #1
 Elevation 1901 Kelly Bushing Kansas City Formation --- Effective Pay --- Ft. Ticket No. 3942
 Date 9/23/79 Sec. 26 Twp. 20S Range 14W County Barton State Kansas
 Test Approved by Leland M. Young Western Representative Denis Wondra

Formation Test No. 3 Interval Tested from 3406 ft. to 3455 ft. Total Depth 3455 ft.
 Packer Depth 3401 ft. Size 6 3/4 in. Packer Depth 3406 ft. Size 6 3/4 in.
 Packer Depth - ft. Size - in. Packer Depth - ft. Size - in.
 Depth of Selective Zone Set -

Top Recorder Depth (Inside) 3410 ft. Recorder Number 1051 Cap. 4250
 Bottom Recorder Depth (Outside) 3413 ft. Recorder Number 969 Cap. 4200
 Below Straddle Recorder Depth - ft. Recorder Number - Cap. -

Drilling Contractor B. & N. Drilling Rig #16 Drill Collar Length 422 I. D. 2.7 in.
 Mud Type starch Viscosity 52 Weight Pipe Length - I. D. - in.
 Weight 9.1 Water Loss 11.6 cc. Drill Pipe Length 2952 I. D. 3.8 in.
 Chlorides 20,000 P.P.M. Test Tool Length 32 ft. Tool Size 5 1/2 OD in.
 Jars: Make WTC Serial Number 410 Anchor Length 49 ft. Size 5 1/2 OD in.
 Did Well Flow? No Reversed Out No Surface Choke Size 3/4 in. Bottom Choke Size 3/4 in.
 Main Hole Size 7 7/8 in. Tool Joint Size 4 1/2 XH in.

Blow: Good. Increased to very good in ten minutes on first flow period. Good throughout second opening.

Recovered 620 ft. of salt water chlorides 75,000 ppm
 Recovered _____ ft. of _____
 Recovered _____ ft. of _____
 Recovered _____ ft. of _____
 Recovered _____ ft. of _____

Remarks: _____

Time Set Packer(s) 11:38 ~~A.M.~~ P.M. Time Started Off Bottom 1:40 ~~A.M.~~ P.M. Maximum Temperature 106
 Initial Hydrostatic Pressure (A) 1696 P.S.I.
 Initial Flow Period Minutes 30 (B) 109 P.S.I. to (C) 168 P.S.I.
 Initial Closed In Period Minutes 33 (D) 1078 P.S.I.
 Final Flow Period Minutes 30 (E) 262 P.S.I. to (F) 271 P.S.I.
 Final Closed In Period Minutes 39 (G) 1091 P.S.I.
 Final Hydrostatic Pressure (H) 1611 P.S.I.

WESTERN TESTING CO., INC.
Pressure Data

Date 9/23/79 Test Ticket No. 3942
 Recorder No. 1051 Capacity 4250 Location 3410 Ft.
 Clock No. -- Elevation 1901 Kelly Bushing Well Temperature 106 °F

Point	Pressure		Time Given	Time Computed
A Initial Hydrostatic Mud	1696	P.S.I.	11:38P	M
B First Initial Flow Pressure	109	P.S.I.	30	30
C First Final Flow Pressure	168	P.S.I.	30	33
D Initial Closed-in Pressure	1078	P.S.I.	30	30
E Second Initial Flow Pressure	262	P.S.I.	30	39
F Second Final Flow Pressure	271	P.S.I.		
G Final Closed-in Pressure	1091	P.S.I.		
H Final Hydrostatic Mud	1611	P.S.I.		

PRESSURE BREAKDOWN

First Flow Pressure
 Breakdown: 6 Inc.
 of 5 mins. and a
 final inc. of 0 Min.

Initial Shut-In
 Breakdown: 11 Inc.
 of 3 mins. and a
 final inc. of 0 Min.

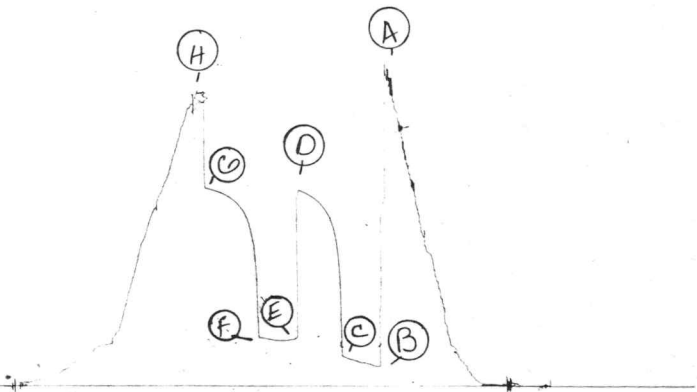
Second Flow Pressure
 Breakdown: 6 Inc.
 of 5 mins. and a
 final inc. of 0 Min.

Final Shut-In
 Breakdown: 13 Inc.
 of 3 mins. and a
 final inc. of 0 Min.

Point Mins.	Press.	Point Minutes	Press.	Point Minutes	Press.	Point Minutes	Press.
P 1 <u>0</u>	<u>109</u>	<u>0</u>	<u>168</u>	<u>0</u>	<u>262</u>	<u>0</u>	<u>271</u>
P 2 <u>5</u>	<u>114</u>	<u>3</u>	<u>638</u>	<u>5</u>	<u>258</u>	<u>3</u>	<u>678</u>
P 3 <u>10</u>	<u>127</u>	<u>6</u>	<u>830</u>	<u>10</u>	<u>254</u>	<u>6</u>	<u>838</u>
P 4 <u>15</u>	<u>133</u>	<u>9</u>	<u>908</u>	<u>15</u>	<u>254</u>	<u>9</u>	<u>921</u>
P 5 <u>20</u>	<u>144</u>	<u>12</u>	<u>953</u>	<u>20</u>	<u>262</u>	<u>12</u>	<u>968</u>
P 6 <u>25</u>	<u>157</u>	<u>15</u>	<u>985</u>	<u>25</u>	<u>268</u>	<u>15</u>	<u>996</u>
P 7 <u>30</u>	<u>168</u>	<u>18</u>	<u>1011</u>	<u>30</u>	<u>271</u>	<u>18</u>	<u>1019</u>
P 8 _____	_____	<u>21</u>	<u>1027</u>	_____	_____	<u>21</u>	<u>1036</u>
P 9 _____	_____	<u>24</u>	<u>1046</u>	_____	_____	<u>24</u>	<u>1051</u>
P10 _____	_____	<u>27</u>	<u>1057</u>	_____	_____	<u>27</u>	<u>1061</u>
P11 _____	_____	<u>30</u>	<u>1068</u>	_____	_____	<u>30</u>	<u>1070</u>
P12 _____	_____	<u>33</u>	<u>1078</u>	_____	_____	<u>33</u>	<u>1078</u>
P13 _____	_____	_____	_____	_____	_____	<u>36</u>	<u>1085</u>
P14 _____	_____	_____	_____	_____	_____	<u>39</u>	<u>1091</u>
P15 _____	_____	_____	_____	_____	_____	_____	_____
P16 _____	_____	_____	_____	_____	_____	_____	_____
P17 _____	_____	_____	_____	_____	_____	_____	_____
P18 _____	_____	_____	_____	_____	_____	_____	_____
P19 _____	_____	_____	_____	_____	_____	_____	_____
P20 _____	_____	_____	_____	_____	_____	_____	_____

1051

RL # 3942
I



Company North American Drilling & Exploration, Inc. Lease & Well No. Weathers #1
 Elevation 1901 Kelly Bushing Formation Arbuckle Effective Pay -- Ft. Ticket No. 3943
 Date 9/23/79 Sec. 26 Twp. 20S Range 14W County Barton State Kansas
 Test Approved by Marvin Frankamp Western Representative Denis Wondra

Formation Test No. 4 Interval Tested from 3507 ft. to 3547 ft. Total Depth 3547 ft.
 Packer Depth 3502 ft. Size 6 3/4 in. Packer Depth 3507 ft. Size 6 3/4 in.
 Packer Depth - ft. Size - in. Packer Depth - ft. Size - in.
 Depth of Selective Zone Set -

Top Recorder Depth (Inside) 3537 ft. Recorder Number 1051 Cap. 4250
 Bottom Recorder Depth (Outside) 3540 ft. Recorder Number 969 Cap. 4200
 Below Straddle Recorder Depth - ft. Recorder Number - Cap. -

Drilling Contractor B. & N. Drilling Rig #16 Drill Collar Length 422 I. D. 2.7 in.
 Mud Type starch Viscosity 46 Weight Pipe Length - I. D. - in.
 Weight 9.1 Water Loss 15.6 cc. Drill Pipe Length 3053 I. D. 3.8 in.
 Chlorides 18,000 P.P.M. Test Tool Length 32 ft. Tool Size 5 1/2 OD in.
 Jars: Make -- Serial Number --- Anchor Length 40 ft. Size 5 1/2 OD in.
 Did Well Flow? No Reversed Out No Surface Choke Size 3/4 in. Bottom Choke Size 3/4 in.
 Main Hole Size 7 7/8 in. Tool Joint Size 4 1/2 XH in.

Blow: Very weak. Died in twenty-two minutes on first flow period. No blow on second opening.

Recovered 10 ft. of drilling mud
 Recovered - ft. of -
 Recovered - ft. of -
 Recovered - ft. of -
 Recovered - ft. of -

Remarks: -

Time Set Packer(s) 9:58 ~~A.M.~~ P.M. Time Started Off Bottom 12:00 ~~P.M.~~ A.M. Maximum Temperature 109
 Initial Hydrostatic Pressure (A) 1733 P.S.I.
 Initial Flow Period Minutes 30 (B) 94 P.S.I. to (C) 90 P.S.I.
 Initial Closed In Period Minutes 33 (D) 146 P.S.I.
 Final Flow Period Minutes 30 (E) 123 P.S.I. to (F) 108 P.S.I.
 Final Closed In Period Minutes 30 (G) 127 P.S.I.
 Final Hydrostatic Pressure (H) 1724 P.S.I.

WESTERN TESTING CO., INC.
Pressure Data

Date 9/23/79

Test Ticket No. 3943

Recorder No. 1051 Capacity 4250 Location 3537 Ft.

Clock No. -- Elevation 1901 Kelly Bushing Well Temperature 109 °F

Point	Pressure		Time Given	Time Computed
A Initial Hydrostatic Mud	1733 P.S.I.	Open Tool	9:58P	M
B First Initial Flow Pressure	94 P.S.I.	First Flow Pressure	30 Mins.	30 Mins.
C First Final Flow Pressure	90 P.S.I.	Initial Closed-in Pressure	30 Mins.	33 Mins.
D Initial Closed-in Pressure	146 P.S.I.	Second Flow Pressure	30 Mins.	30 Mins.
E Second Initial Flow Pressure	123 P.S.I.	Final Closed-in Pressure	30 Mins.	30 Mins.
F Second Final Flow Pressure	108 P.S.I.			
G Final Closed-in Pressure	127 P.S.I.			
H Final Hydrostatic Mud	1724 P.S.I.			

PRESSURE BREAKDOWN

First Flow Pressure
Breakdown: 6 Inc.
of 5 mins. and a
final inc. of 0 Min.

Initial Shut-In
Breakdown: 11 Inc.
of 3 mins. and a
final inc. of 0 Min.

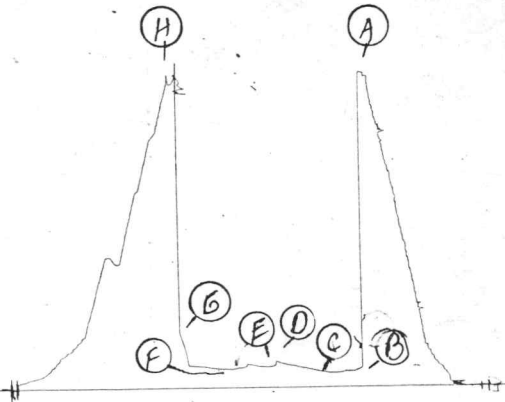
Second Flow Pressure
Breakdown: 6 Inc.
of 5 mins. and a
final inc. of 0 Min.

Final Shut-In
Breakdown: 10 Inc.
of 3 mins. and a
final inc. of 0 Min.

Point Mins.	Press.	Point Minutes	Press.	Point Minutes	Press.	Point Minutes	Press.
P 1	0	94	0	90	0	123	108
P 2	5	92	3	95	5	120	105
P 3	10	89	6	99	10	121	108
P 4	15	84	9	103	15	127	108
P 5	20	80	12	110	20	133	110
P 6	25	82	15	114	25	114	114
P 7	30	90	18	120	30	108	118
P 8			21	126			123
P 9			24	129			125
P10			27	135			126
P11			30	141			127
P12			33	146			
P13							
P14							
P15							
P16							
P17							
P18							
P19							
P20							

1051

PL # 3943
I



Company North American Drilling & Exploration, Inc. Lease & Well No. Weathers #1
 Elevation 1901 Kelly Bushing Formation Arbuckle Effective Pay -- Ft. Ticket No. 3944
 Date 9/24/79 Sec. 26 Twp. 20S Range 14W County Barton State Kansas
 Test Approved by Marvin Frankamp Western Representative Denis Wondra

Formation Test No. 5 Interval Tested from 3507 ft. to 3555 ft. Total Depth 3555 ft.
 Packer Depth 3502 ft. Size 6 3/4 in. Packer Depth 3507 ft. Size 6 3/4 in.
 Packer Depth - ft. Size - in. Packer Depth - ft. Size - in.
 Depth of Selective Zone Set -

Top Recorder Depth (Inside) 3510 ft. Recorder Number 1051 Cap. 4250
 Bottom Recorder Depth (Outside) 3513 ft. Recorder Number 969 Cap. 4200
 Below Straddle Recorder Depth - ft. Recorder Number - Cap. -

Drilling Contractor B. & N. Drilling Rig #16 Drill Collar Length 422 I. D. 2.7 in.
 Mud Type starch Viscosity 46 Weight Pipe Length - I. D. - in.
 Weight 9.1 Water Loss 15.6 cc. Drill Pipe Length 3059 I. D. 3.8 in.
 Chlorides 18,000 P.P.M. Test Tool Length 26 ft. Tool Size 5 1/2 OD in.
 Jars: Make -- Serial Number -- Anchor Length 48 ft. Size 5 1/2 OD in.
 Did Well Flow? Yes Reversed Out No Surface Choke Size 3/4 in. Bottom Choke Size 3/4 in.
 Main Hole Size 7 7/8 in. Tool Joint Size 4 1/2 FH in.

Blow: Weak 1/4" increased to 1" on first flow period. Steady 1/2" blow throughout second opening.

Recovered 185 ft. of muddy oil
 Recovered - ft. of Some free oil on top of tool.
 Recovered - ft. of -
 Recovered - ft. of -
 Recovered - ft. of -
 Remarks: Slid tool six feet to bottom.

Time Set Packer(s) 11:13 ~~A.M.~~ P.M. Time Started Off Bottom 3:15 ~~A.M.~~ P.M. Maximum Temperature 112
 Initial Hydrostatic Pressure (A) 1750 P.S.I.
 Initial Flow Period Minutes 60 (B) 111 P.S.I. to (C) 109 P.S.I.
 Initial Closed In Period Minutes 60 (D) 885 P.S.I.
 Final Flow Period Minutes 60 (E) 151 P.S.I. to (F) 105 P.S.I.
 Final Closed In Period Minutes 60 (G) 830 P.S.I.
 Final Hydrostatic Pressure (H) 1709 P.S.I.

WESTERN TESTING CO., INC.
Pressure Data

Date 9/24/79 Test Ticket No. 3944
 Recorder No. 1051 Capacity 4250 Location 3510 Ft.
 Clock No. -- Elevation 1901 Kelly Bushing Well Temperature 112 °F

Point	Pressure		Time Given	Time Computed
A Initial Hydrostatic Mud	1750	P.S.I.	11:13P	M
B First Initial Flow Pressure	111	P.S.I.	60	Mins. 60 Mins.
C First Final Flow Pressure	109	P.S.I.	60	Mins. 60 Mins.
D Initial Closed-in Pressure	885	P.S.I.	60	Mins. 60 Mins.
E Second Initial Flow Pressure	151	P.S.I.	60	Mins. 60 Mins.
F Second Final Flow Pressure	105	P.S.I.		
G Final Closed-in Pressure	830	P.S.I.		
H Final Hydrostatic Mud	1709	P.S.I.		

PRESSURE BREAKDOWN

First Flow Pressure
 Breakdown: 12 Inc.
 of 5 mins. and a
 final inc. of 0 Min.

Initial Shut-In
 Breakdown: 20 Inc.
 of 3 mins. and a
 final inc. of 0 Min.

Second Flow Pressure
 Breakdown: 12 Inc.
 of 5 mins. and a
 final inc. of 0 Min.

Final Shut-In
 Breakdown: 20 Inc.
 of 3 mins. and a
 final inc. of 0 Min.

Point Mins.	Press.	Point Minutes	Press.	Point Minutes	Press.	Point Minutes	Press.	
P 1	0	107	0	109	0	151	0	105
P 2	5	111	3	228	5	125	3	129
P 3	10	103	6	239	10	110	6	209
P 4	15	92	9	431	15	108	9	293
P 5	20	89	12	448	20	108	12	373
P 6	25	89	15	557	25	105	15	431
P 7	30	89	18	612	30	105	18	485
P 8	35	89	21	646	35	105	21	530
P 9	40	89	24	681	40	105	24	576
P10	45	89	27	710	45	105	27	619
P11	50	89	30	738	50	105	30	653
P12	55	89	33	759	55	105	33	687
P13	60	109	36	778	60	105	36	712
P14			39	795			39	729
P15			42	815			42	751
P16			45	830			45	766
P17			48	838			48	783
P18			51	857			51	800
P19			54	870			54	810
P20			57	878			57	821
			60	885			60	830

105,

144 # 3944
I

