

Company Pickrell Drilling Company Lease & Well No. Miller "F" #1
 Elevation 2217 Kelly Bushing Mississippi Effective Pay -- Ft. Ticket No. 2039
 Date 3/18/79 Sec. 31 Twp. 20S Range 20W County Pawnee State Kansas
 Test Approved by Gred Cheney Western Representative John J. Schmidt

Formation Test No. 1 Interval Tested from 4335' ft. to 4366' ft. Total Depth 4366' ft.
 Packer Depth 4330 ft. Size 6 3/4 in. Packer Depth 4335 ft. Size 6 3/4 in.
 Packer Depth = ft. Size = in. Packer Depth = ft. Size = in.

Depth of Selective Zone Set =
 Top Recorder Depth (Inside) 4359 ft. Recorder Number 2608 Cap. 4150 PSI
 Bottom Recorder Depth (Outside) 4362 ft. Recorder Number 3473 Cap. 4000 PSI
 Below Straddle Recorder Depth - ft. Recorder Number - Cap. -

Drilling Contractor Pickrell #10 Drill Collar Length - I. D. - in.
 Mud Type drispac Viscosity 36 Weight Pipe Length 566 I. D. 2.76 in.
 Weight 9.3 Water Loss 13.2 cc. Drill Pipe Length 3800 I. D. 3.8 in.
 Chlorides 16,000 P.P.M. Test Tool Length 19' in. Tool Size 5 1/2 in.
 Jars: Make None Serial Number - Anchor Length 31' ft. Size 5 1/2 in.
 Did Well Flow? No Reversed Out No Surface Choke Size 3/4 in. Bottom Choke Size 3/4 in.
 Main Hole Size 7 7/8 in. Tool Joint Size 4 1/2 FH in.

Blow: Weak to fair blow; steady increasing throughout both openings.

Recovered 300 ft. of gas in pipe
 Recovered 60 ft. of oil cut mud 20% oil; 80% mud
 Recovered 60 ft. of heavy oil cut mud 70% oil; 30% mud
 Recovered ft. of
 Recovered ft. of

Remarks:

Time Set Packer(s) 2:27 AM P.M. Time Started Off Bottom 6:00 AM P.M. Maximum Temperature 122
 Initial Hydrostatic Pressure (A) 2208 P.S.I.
 Initial Flow Period Minutes 30 (B) 48 P.S.I. to (C) 40 P.S.I.
 Initial Closed In Period Minutes 60 (D) 950 P.S.I.
 Final Flow Period Minutes 60 (E) 71 P.S.I. to (F) 73 P.S.I.
 Final Closed In Period Minutes 60 (G) 894 P.S.I.
 Final Hydrostatic Pressure (H) 2171 P.S.I.

WESTERN TESTING CO., INC.

Pressure Data

Date 3/18/79

Recorder No. 2608

Test Ticket No. 2039

Capacity 4150

Location 4359 Ft.

Clock No. --

Elevation 2217 Kelly Bushing

Well Temperature 122 °F

Point	Pressure	
A Initial Hydrostatic Mud	2208	P.S.I.
B First Initial Flow Pressure	48	P.S.I.
C First Final Flow Pressure	40	P.S.I.
D Initial Closed-in Pressure	950	P.S.I.
E Second Initial Flow Pressure	71	P.S.I.
F Second Final Flow Pressure	73	P.S.I.
G Final Closed-in Pressure	894	P.S.I.
H Final Hydrostatic Mud	2171	P.S.I.

Open Tool

First Flow Pressure

Initial Closed-in Pressure

Second Flow Pressure

Final Closed-in Pressure

Time Given	M	Time Computed	Mins.
2:27P			
30	Mins.	30	Mins.
60	Mins.	60	Mins.
60	Mins.	60	Mins.
60	Mins.	60	Mins.

PRESSURE BREAKDOWN

First Flow Pressure

Breakdown: 6 Inc.

of 5 mins. and a

final inc. of 0 Min.

Initial Shut-In

Breakdown: 20 Inc.

of 3 mins. and a

final inc. of 0 Min.

Second Flow Pressure

Breakdown: 12 Inc.

of 5 mins. and a

final inc. of 0 Min.

Final Shut-In

Breakdown: 20 Inc.

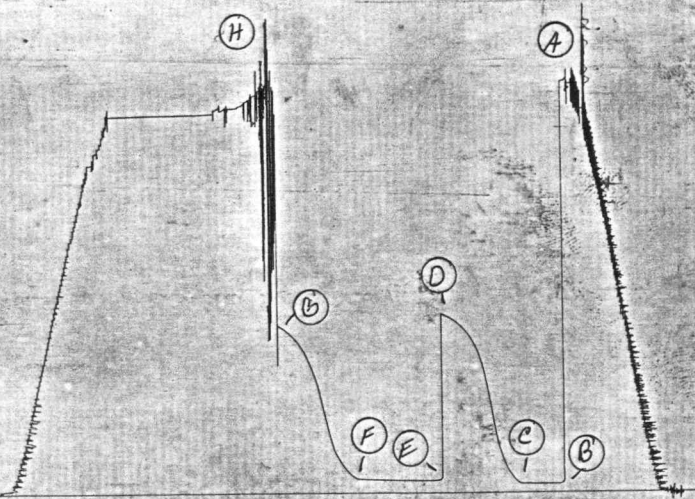
of 3 mins. and a

final inc. of 0 Min.

Point Mins.	Press.	Point Minutes	Press.	Point Minutes	Press.	Point Minutes	Press.
P 1	0	48	0	40	0	71	73
P 2	5	42	3	54	5	64	81
P 3	10	43	6	75	10	64	98
P 4	15	43	9	112	15	64	125
P 5	20	40	12	156	20	64	152
P 6	25	40	15	214	25	64	187
P 7	30	40	18	291	30	64	223
P 8			21	418	35	65	293
P 9			24	533	40	66	385
P10			27	628	45	68	471
P11			30	708	50	69	562
P12			33	746	55	71	630
P13			36	783	60	73	690
P14			39	828			741
P15			42	855			780
P16			45	888			807
P17			48	900			824
P18			51	914			840
P19			54	925			858
P20			57	938			875
			60	950			894

2608

TRT # 2039
I



Company Pickrell Drilling Company Lease & Well No. Miller "F" #1
 Elevation 2217 Kelly Bushing Formation Mississippi Effective Pay -- Ft. Ticket No. 2040
 Date 3/19/79 Sec. 31 Twp. 20S Range 20W County Pawnee State Kansas
 Test Approved by Greg Cheney Western Representative John J. Schmidt

Formation Test No. 2 Interval Tested from 4364 ft. to 4374 ft. Total Depth 4374 ft.
 Packer Depth 4359 ft. Size 6 3/4 in. Packer Depth 4364 ft. Size 6 3/4 in.
 Packer Depth - ft. Size - in. Packer Depth - ft. Size - in.

Depth of Selective Zone Set -
 Top Recorder Depth (Inside) 4367 ft. Recorder Number 2608 Cap. 4150 PSI
 Bottom Recorder Depth (Outside) 4370 ft. Recorder Number 3473 Cap. 4000 PSI
 Below Straddle Recorder Depth - ft. Recorder Number - Cap. -

Drilling Contractor Pickrell #10 Drill Collar Length - I. D. - in.
 Mud Type drispac Viscosity 36 Weight Pipe Length 566 I. D. 2.76 in.
 Weight 9.3 Water Loss 13.2 cc. Drill Pipe Length 3830 I. D. 3.8 in.
 Chlorides 16,000 P.P.M. Test Tool Length 19' = ft. Tool Size 5 1/2 in.
 Jars: Make None Serial Number - Anchor Length 10' ft. Size 5 1/2 in.
 Did Well Flow? No Reversed Out No Surface Choke Size 3/4 in. Bottom Choke Size 3/4 in.
 Main Hole Size 7 7/8 in. Tool Joint Size 4 1/2 FH in.

Blow: Weak blow.

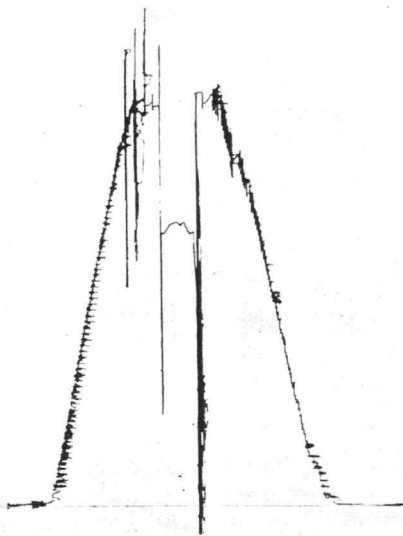
Recovered ft. of
 Recovered ft. of
 Recovered ft. of MISRUN
 Recovered ft. of
 Recovered ft. of

Remarks: SLID 4' AND WAS STILL 11' OFF BOTTOM.

Time Set Packer(s) 7:12 ^{A.M.}/_{P.M.} Time Started Off Bottom 7:40 ^{A.M.}/_{P.M.} Maximum Temperature
 Initial Hydrostatic Pressure (A) P.S.I.
 Initial Flow Period Minutes (B) P.S.I. to (C) P.S.I.
 Initial Closed In Period Minutes (D) P.S.I.
 Final Flow Period Minutes (E) P.S.I. to (F) P.S.I.
 Final Closed In Period Minutes (G) P.S.I.
 Final Hydrostatic Pressure (H) P.S.I.

2008

TRK # 2040
I



Company Pickrell Drilling Company Lease & Well No. Miller "F" #1
 Elevation 2217 Kelly Bushing Formation Mississippi Effective Pay -- Ft. Ticket No. 2041
 Date 3/19/79 Sec. 31 Twp. 20S Range 20W County Pawnee State Kansas
 Test Approved by Greg Cheney Western Representative John J. Schmidt

Formation Test No. 3 Interval Tested from 4336' ft. to 4374 ft. Total Depth 4374' ft.
 Packer Depth 4331 ft. Size 6 3/4 in. Packer Depth 4336 ft. Size 6 3/4 in.
 Packer Depth - ft. Size - in. Packer Depth - ft. Size - in.
 Depth of Selective Zone Set --

Top Recorder Depth (Inside) 4366 ft. Recorder Number 2608 Cap. 4150 PSI
 Bottom Recorder Depth (Outside) 4369 ft. Recorder Number 3473 Cap. 4000 PSI
 Below Straddle Recorder Depth - ft. Recorder Number - Cap. -

Drilling Contractor Pickrell Drilling #10 Drill Collar Length - I. D. - in.
 Mud Type drispac Viscosity 47 Weight Pipe Length 566 I. D. 2.76 in.
 Weight 9.4 Water Loss 14.8 cc. Drill Pipe Length 3800 I. D. 3.8 in.
 Chlorides 19,000 P.P.M. Test Tool Length 19' in. Tool Size 5 1/2 in.
 Jars: Make None Serial Number - Anchor Length 38' ft. Size 5 1/2 in.
 Did Well Flow? No Reversed Out No Surface Choke Size 3/4 in. Bottom Choke Size 3/4 in.
 Main Hole Size 7 7/8 in. Tool Joint Size 4 1/2 FH in.

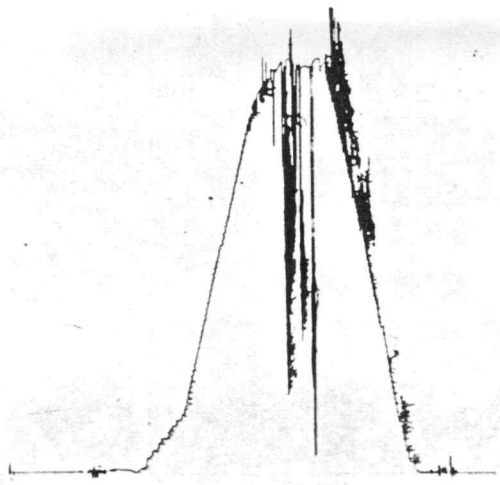
Blow: _____

 Recovered _____ ft. of _____
 Recovered _____ ft. of _____
 Recovered _____ ft. of MISRUN PACKER FAILURE
 Recovered _____ ft. of _____
 Recovered _____ ft. of _____
 Remarks: _____

Time Set Packer(s) 4:42 ^{=A.M.} P.M. Time Started Off Bottom 5:00 ^{A.M.} P.M. Maximum Temperature _____
 Initial Hydrostatic Pressure (A) _____ P.S.I.
 Initial Flow Period Minutes (B) _____ P.S.I. to (C) _____ P.S.I.
 Initial Closed In Period Minutes (D) _____ P.S.I.
 Final Flow Period Minutes (E) _____ P.S.I. to (F) _____ P.S.I.
 Final Closed In Period Minutes (G) _____ P.S.I.
 Final Hydrostatic Pressure (H) _____ P.S.I.

2008

TKT# 2041
I



Company Pickrell Drilling Company Lease & Well No. Miller #1"F"
 Elevation 2217 Kelly Bushing Mississippi Effective Pay -- Ft. Ticket No. 2042
 Date 3/20/79 Sec. 31 Twp. 20S Range 20W County Pawnee State Kansas
 Test Approved by Greg Cheney Western Representative John J. Schmidt

Formation Test No. 4 Interval Tested from 4308' ft. to 4374' ft. Total Depth 4374' ft.
 Packer Depth 4303 ft. Size 6 3/4 in. Packer Depth 4308 ft. Size 6 3/4 in.
 Packer Depth - ft. Size - in. Packer Depth - ft. Size - in.
 Depth of Selective Zone Set --

Top Recorder Depth (Inside) 4365 ft. Recorder Number 2608 Cap. 4150 PSI
 Bottom Recorder Depth (Outside) 4368 ft. Recorder Number 3473 Cap. 4000 PSI
 Below Straddle Recorder Depth - ft. Recorder Number - Cap. -
 Drilling Contractor Pickrell Drilling #10 Drill Collar Length - I. D. - in.
 Mud Type drispac Viscosity 47 Weight Pipe Length 566 I. D. 2.76 in.
 Weight 9.4 Water Loss 14.8 cc. Drill Pipe Length 3770 I. D. 3.8 in.
 Chlorides 19,000 P.P.M. Test Tool Length 19' in. Tool Size 5 1/2 in.
 Jars: Make None Serial Number -- Anchor Length 66' ft. Size 5 1/2 in.
 Did Well Flow? No Reversed Out No Surface Choke Size 3/4 in. Bottom Choke Size 3/4 in.
 Main Hole Size 7 7/8 in. Tool Joint Size 4 1/2 FH in.

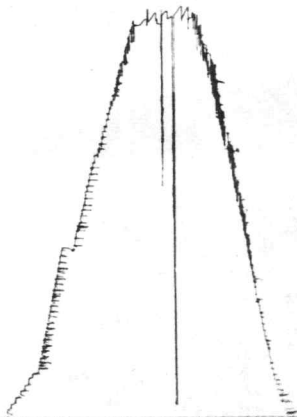
Blow: _____

 Recovered _____ ft. of _____
 Recovered _____ ft. of _____
 Recovered _____ ft. of MISRUN PACKER FAILURE
 Recovered _____ ft. of _____
 Recovered _____ ft. of _____
 Remarks: _____

Time Set Packer(s) _____ A.M. P.M. Time Started Off Bottom _____ A.M. P.M. Maximum Temperature _____
 Initial Hydrostatic Pressure (A) _____ P.S.I.
 Initial Flow Period Minutes (B) _____ P.S.I. to (C) _____ P.S.I.
 Initial Closed In Period Minutes (D) _____ P.S.I.
 Final Flow Period Minutes (E) _____ P.S.I. to (F) _____ P.S.I.
 Final Closed In Period Minutes (G) _____ P.S.I.
 Final Hydrostatic Pressure (H) _____ P.S.I.

2608

TKC# 1043
I



Company Pickrell Drilling Company Lease & Well No. Miller "F" #1
 Elevation 2217 Kelly Bushing Formation Mississippi Effective Pay -- Ft. Ticket No. 2043
 Date 3/20/79 Sec. 31 Twp. 20S Range 20W County Pawnee State Kansas
 Test Approved by Greg Cheney Western Representative John J. Schmidt

Formation Test No. 5 Interval Tested from 4300' ft. to 4374' ft. Total Depth 4374' ft.
 Packer Depth 4295 ft. Size 6 3/4 in. Packer Depth - ft. Size - in.
 Packer Depth - ft. Size - in. Packer Depth - ft. Size - in.
 Depth of Selective Zone Set --

Top Recorder Depth (Inside) 4365 ft. Recorder Number 2608 Cap. 4150 PSI
 Bottom Recorder Depth (Outside) 4368 ft. Recorder Number 3473 Cap. 4000 PSI
 Below Straddle Recorder Depth - ft. Recorder Number - Cap. -

Drilling Contractor Pickrell Drilling #10 Drill Collar Length - I. D. - in.
 Mud Type drispac Viscosity 47 Weight Pipe Length 566 I. D. 2.76 in.
 Weight 9.4 Water Loss 14.8 cc. Drill Pipe Length 3770 I. D. 3.8 in.
 Chlorides 19,000 P.P.M. Test Tool Length 19' Tool Size 5 1/2 in.
 Jars: Make None Serial Number - Anchor Length 74' ft. Size 5 1/2 in.
 Did Well Flow? No Reversed Out No Surface Choke Size 3/4 in. Bottom Choke Size 3/4 in.
 Main Hole Size 7 7/8 in. Tool Joint Size 4 1/2 FH in.

Blow: Fair to good blow bottom of bucket on second opening. Steady blow on second opening.

Recovered 280' ft. of gas in pipe
 Recovered 30' ft. of slightly oil cut mud (10% oil;90% mud)
 Recovered 60' ft. of slightly oil cut mud (36% oil;4% water;60% mud)
 Recovered 60' ft. of slightly oil cut mud (30% oil;2% water;68% mud)
 Recovered 60' ft. of slightly oil cut mud (50% oil;10% water;85% mud)
 Remarks: Total 210' oil cut mud (20,000 chlorides)

Time Set Packer(s) 9:42 ^{A.M.}/_{P.M.} Time Started Off Bottom 1:45 ^{A.M.}/_{P.M.} Maximum Temperature 118
 Initial Hydrostatic Pressure (A) 2168 P.S.I.
 Initial Flow Period (B) 30 Minutes 83 P.S.I. to (C) 98 P.S.I.
 Initial Closed In Period (D) 60 Minutes 812 P.S.I.
 Final Flow Period (E) 90 Minutes 129 P.S.I. to (F) 150 P.S.I.
 Final Closed In Period (G) 60 Minutes 400 P.S.I.
 Final Hydrostatic Pressure (H) 2154 P.S.I.

WESTERN TESTING CO., INC.
Pressure Data

Date 3/20/79 Test Ticket No. 2043
 Recorder No. 2608 Capacity 4150 Location 4365 Ft.
 Clock No. -- Elevation 2217 Kelly Bushing Well Temperature 118 °F

Point	Pressure		Time Given	Time Computed
A Initial Hydrostatic Mud	2168	P.S.I.	9:42A	M
B First Initial Flow Pressure	83	P.S.I.	30	Mins. 30 Mins.
C First Final Flow Pressure	98	P.S.I.	60	Mins. 60 Mins.
D Initial Closed-in Pressure	812	P.S.I.	90	Mins. 90 Mins.
E Second Initial Flow Pressure	129	P.S.I.	60	Mins. 60 Mins.
F Second Final Flow Pressure	150	P.S.I.		
G Final Closed-in Pressure	400	P.S.I.		
H Final Hydrostatic Mud	2154	P.S.I.		

PRESSURE BREAKDOWN

First Flow Pressure
 Breakdown: 6 Inc.
 of 5 mins. and a
 final inc. of 0 Min.

Initial Shut-In
 Breakdown: 20 Inc.
 of 3 mins. and a
 final inc. of 0 Min.

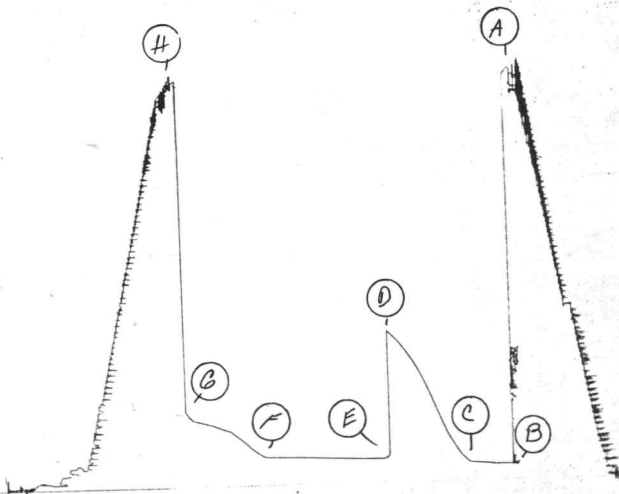
Second Flow Pressure
 Breakdown: 18 Inc.
 of 5 mins. and a
 final inc. of 0 Min.

Final Shut-In
 Breakdown: 20 Inc.
 of 3 mins. and a
 final inc. of 0 Min.

Point Mins.	Press.	Point Minutes	Press.	Point Minutes	Press.	Point Minutes	Press.
P 1	0	0	98	0	129	0	150
P 2	5	3	108	5	133	3	160
P 3	10	6	131	10	131	6	179
P 4	15	9	154	15	131	9	193
P 5	20	12	187	20	131	12	210
P 6	25	15	223	25	133	15	231
P 7	30	18	262	30	134	18	248
P 8		21	306	35	136	21	268
P 9		24	360	40	139	24	285
P10		27	416	45	141	27	295
P11		30	469	50	142	30	303
P12		33	507	55	143	33	311
P13		36	544	60	144	36	320
P14		39	592	65	146	39	326
P15		42	630	70	148	42	333
P16		45	671	75	150	45	341
P17		48	700	80	150	48	353
P18		51	732	85	150	51	366
P19		54	765	90	150	54	375
P20		57	796			57	388
		60	812			60	400

2608

TKC # 2043
I



Company Pickrell Drilling Company Lease & Well No. Miller "F" #1
 Elevation 2217 Kelly Bushing Mississippi Effective Pay -- Ft. Ticket No. 2044
 Date 3/20/79 Sec. 31 Twp. 20S Range 20W County Pawnee State Kansas
 Test Approved by Greg Cheney Western Representative John J. Schmidt

Formation Test No. 6 Interval Tested from 4301 ft. to 4380 ft. Total Depth 4380 ft.
 Packer Depth 4296 ft. Size 6 3/4 in. Packer Depth 4301 ft. Size 6 3/4 in.
 Packer Depth - ft. Size - in. Packer Depth - ft. Size - in.

Depth of Selective Zone Set -
 Top Recorder Depth (Inside) 4372 ft. Recorder Number 2608 Cap. 4150 PSI
 Bottom Recorder Depth (Outside) 4375 ft. Recorder Number 3473 Cap. 4000 PSI
 Below Straddle Recorder Depth - ft. Recorder Number - Cap. -

Drilling Contractor Pickrell Drilling #10 Drill Collar Length - I. D. - in.
 Mud Type drispac Viscosity 50 Weight Pipe Length 566 I. D. 2.76 in.
 Weight 9.5 Water Loss 15.2 cc. Drill Pipe Length 3770 I. D. 3.8 in.
 Chlorides 21,000 P.P.M. Test Tool Length 19' Tool Size 5 1/2 in.
 Jars: Make none Serial Number - Anchor Length 79 ft. Size 5 1/2 in.
 Did Well Flow? No Reversed Out No Surface Choke Size 3/4 in. Bottom Choke Size 3/4 in.
 Main Hole Size 7 7/8 in. Tool Joint Size 4 1/2 FH in.

Blow: Weak to a fair blow throughout openings.

Recovered 180 ft. of gas in pipe
 Recovered 150 ft. of slightly oil cut mud (15% oil;85% mud)
 Recovered - ft. of -
 Recovered - ft. of -
 Recovered - ft. of -

Remarks: Plugging action in tool on first flow.

Time Set Packer(s) 11:27 ~~A.M.~~ P.M. Time Started Off Bottom 3:30 ~~A.M.~~ P.M. Maximum Temperature 119
 Initial Hydrostatic Pressure (A) 2212 P.S.I.
 Initial Flow Period Minutes 25 (B) 102 P.S.I. to (C) 164 P.S.I.
 Initial Closed In Period Minutes 60 (D) 834 P.S.I.
 Final Flow Period Minutes 90 (E) 128 P.S.I. to (F) 144 P.S.I.
 Final Closed In Period Minutes 60 (G) 462 P.S.I.
 Final Hydrostatic Pressure (H) 2177 P.S.I.

WESTERN TESTING CO., INC.
Pressure Data

Date 3/20/79

Test Ticket No. 2044

Recorder No. 2608 Capacity 4150 Location 4372 Ft.

Clock No. -- Elevation 2217 Kelly Bushing Well Temperature 119 °F

Point	Pressure		Time Given	Time Computed
A Initial Hydrostatic Mud	2212 P.S.I.	Open Tool	11:27P _M	
B First Initial Flow Pressure	102 P.S.I.	First Flow Pressure	30 Mins.	25 Mins.
C First Final Flow Pressure	164 P.S.I.	Initial Closed-in Pressure	60 Mins.	60 Mins.
D Initial Closed-in Pressure	834 P.S.I.	Second Flow Pressure	90 Mins.	90 Mins.
E Second Initial Flow Pressure	128 P.S.I.	Final Closed-in Pressure	60 Mins.	60 Mins.
F Second Final Flow Pressure	144 P.S.I.			
G Final Closed-in Pressure	462 P.S.I.			
H Final Hydrostatic Mud	2177 P.S.I.			

PRESSURE BREAKDOWN

First Flow Pressure
Breakdown: 5 Inc.
of 5 mins. and a
final inc. of 0 Min.

Initial Shut-In
Breakdown: 20 Inc.
of 3 mins. and a
final inc. of 0 Min.

Second Flow Pressure
Breakdown: 18 Inc.
of 5 mins. and a
final inc. of 0 Min.

Final Shut-In
Breakdown: 20 Inc.
of 3 mins. and a
final inc. of 0 Min.

Point Mins.	Press.	Point Minutes	Press.	Point Minutes	Press.	Point Minutes	Press.
P 1 <u>0</u>	<u>102</u>	<u>0</u>	<u>164</u>	<u>0</u>	<u>128</u>	<u>0</u>	<u>144</u>
P 2 <u>5</u>	<u>102</u>	<u>3</u>	<u>202</u>	<u>5</u>	<u>121</u>	<u>3</u>	<u>152</u>
P 3 <u>10</u>	<u>104</u>	<u>6</u>	<u>239</u>	<u>10</u>	<u>121</u>	<u>6</u>	<u>160</u>
P 4 <u>15</u>	<u>123</u>	<u>9</u>	<u>275</u>	<u>15</u>	<u>121</u>	<u>9</u>	<u>171</u>
P 5 <u>20</u>	<u>135</u>	<u>12</u>	<u>318</u>	<u>20</u>	<u>121</u>	<u>12</u>	<u>185</u>
P 6 <u>25</u>	<u>164</u>	<u>15</u>	<u>368</u>	<u>25</u>	<u>123</u>	<u>15</u>	<u>200</u>
P 7		<u>18</u>	<u>414</u>	<u>30</u>	<u>124</u>	<u>18</u>	<u>217</u>
P 8		<u>21</u>	<u>456</u>	<u>35</u>	<u>125</u>	<u>21</u>	<u>230</u>
P 9		<u>24</u>	<u>494</u>	<u>40</u>	<u>127</u>	<u>24</u>	<u>244</u>
P10		<u>27</u>	<u>535</u>	<u>45</u>	<u>129</u>	<u>27</u>	<u>262</u>
P11		<u>30</u>	<u>572</u>	<u>50</u>	<u>131</u>	<u>30</u>	<u>275</u>
P12		<u>33</u>	<u>583</u>	<u>55</u>	<u>133</u>	<u>33</u>	<u>294</u>
P13		<u>36</u>	<u>591</u>	<u>60</u>	<u>135</u>	<u>36</u>	<u>315</u>
P14		<u>39</u>	<u>603</u>	<u>65</u>	<u>136</u>	<u>39</u>	<u>327</u>
P15		<u>42</u>	<u>612</u>	<u>70</u>	<u>136</u>	<u>42</u>	<u>349</u>
P16		<u>45</u>	<u>721</u>	<u>75</u>	<u>137</u>	<u>45</u>	<u>370</u>
P17		<u>48</u>	<u>751</u>	<u>80</u>	<u>139</u>	<u>48</u>	<u>398</u>
P18		<u>51</u>	<u>775</u>	<u>85</u>	<u>142</u>	<u>51</u>	<u>417</u>
P19		<u>54</u>	<u>796</u>	<u>90</u>	<u>144</u>	<u>54</u>	<u>430</u>
P20		<u>57</u>	<u>815</u>			<u>57</u>	<u>445</u>
		<u>60</u>	<u>834</u>			<u>60</u>	<u>462</u>

TKL # 2044
I

