

WESTERN TESTING CO. INC.
SUBSURFACE PRESSURE SURVEY

DATE: 9/2/83 TICKET #19102
CUSTOMER: WILEY R. ASH SR. LEASE: SPOTTN
WELL: 6 TEST: 1 GEOLOGIST: R. GEORGE
ELEVATION (KB): 1548 FORMATION: MISSISSIPPI
SECTION: 32 TOWNSHIP: 20S
RANGE: 5W COUNTY: MCPHERSON STATE: KANSAS
GAUGE SN #13266 RANGE: 4200 CLOCK: 12

INTERVAL TEST FROM: 3368 FT TO: 3376 FT TOTAL DEPTH: 3460 FT
DEPTH OF SELECTIVE ZONE: FT
PACKER DEPTH: 3368 FT SIZE: 6 3/4 IN PACKER DEPTH: 3363 FT SIZE: 6 3/4 IN
PACKER DEPTH: FT SIZE: IN PACKER DEPTH: FT SIZE: IN

DRILLING CONTRACTOR: REYNOLDS DRL #3
MUD TYPE: STARCH VISCOSITY: 38
WEIGHT: 9.8 WATER LOSS (CC): 22
CHLORIDES (P.P.M.): 55000
JARS - MAKE: WTC SERIAL NUMBER: 407
DID WELL FLOW? NO REVERSED OUT? NO
DRILL COLLAR LENGTH: 285 FT I.D.: 2.25 IN
WEIGHT PIPE LENGTH: FT I.D.: IN
DRILL PIPE LENGTH: 3046 FT I.D.: 3.8 IN
TEST TOOL LENGTH: 121 FT TOOL SIZE: 5 1/2 O.D. IN
ANCHOR LENGTH: 8 FT SIZE: 5 1/2 O.D/ IN
SURFACE CHOKE SIZE: 3/4 IN BOTTOM CHOKE SIZE: 3/4 IN
MAIN HOLE SIZE: 7 7/8 IN TOOL JOINT SIZE: 4 1/2 X.H. IN

BLOW: WEAK INCREASING TO FAIR AT END
OF TEST.

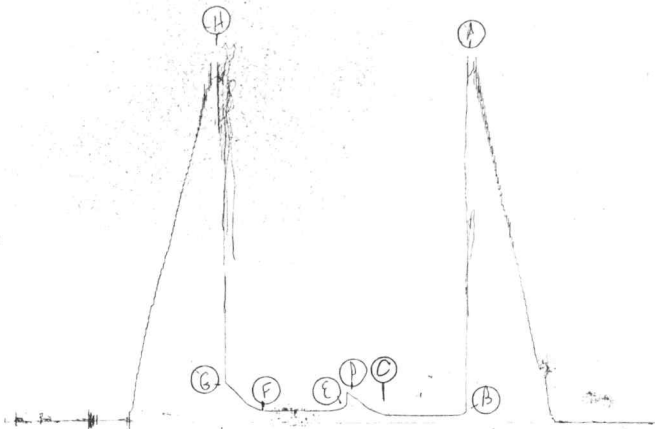
RECOVERED: 140 FT OF: OIL & GAS CUT MUD
RECOVERED: FT OF: 50% OIL; 50% MUD (TOP SAMPLE)
RECOVERED: FT OF: 20% OIL; 80% MUD (BOTTOM SAMPLE)
RECOVERED: 890 FT OF: GAS IN PIPE
RECOVERED: FT OF:
RECOVERED: FT OF:
RECOVERED: FT OF:
RECOVERED: FT OF:
RECOVERED: FT OF:

REMARKS: DAMAGED TOP PACKER RUBBER
All depths recroded on DST #1 taken from
electric log measurements.

TIME SET PACKER(S): 4:45 P.M. TIME STARTED OFF BOTTOM: 7:45 P.M.
WELL TEMPERATURE: 112 °F
INITIAL HYDROSTATIC PRESSURE: (A) 1818 PSI
INITIAL FLOW PERIOD MIN: 60 (B) 38 PSI TO (C) 38 PSI
INITIAL CLOSED IN PERIOD MIN: 27 (D) 158 PSI
FINAL FLOW PERIOD MIN: 60 (E) 91 PSI TO (F) 60 PSI
FINAL CLOSED IN PERIOD MIN: 30 (G) 209 PSI
FINAL HYDROSTATIC PRESSURE (H) 1788 PSI

TKT # 19102

I



13266

DS#1

19102

TKT # 19102

Below Straddle

13268

OST # 1

19102

