

Company J. A. Allison Lease & Well No. Wilken #2
 Elevation 3176 Ground Level Formation Marmaton Effective Pay - Ft. Ticket No. 12398
 Date 11/ 3 /81 Sec. 34 Twp. 20S Range 35W County Wichita State Kansas
 Test Approved by Phil Hart Western Representative Steve Eisenhour

Formation Test No. 1 Interval Tested from 4476 ft. to 4540 ft. Total Depth 4540 ft.
 Packer Depth 4471 ft. Size 6 3/4 in. Packer Depth - ft. Size - in.
 Packer Depth 4476 ft. Size 6 3/4 in. Packer Depth - ft. Size - in.
 Depth of Selective Zone Set -

Top Recorder Depth (Inside) 4503 ft. Recorder Number 1564 Cap. 3150
 Bottom Recorder Depth (Outside) 4506 ft. Recorder Number 4331 Cap. 4150
 Below Straddle Recorder Depth - ft. Recorder Number - Cap. -

Drilling Contractor Slawson Drlg. Rig #6 Drill Collar Length 437 I. D. 2.2 in.
 Mud Type mogoploy pac Viscosity 43 Weight Pipe Length - I. D. - in.
 Weight 9.2 Water Loss 16.4 cc. Drill Pipe Length 4018 I. D. 3.8 in.
 Chlorides 22,000 P.P.M. Test Tool Length 21 ft. Tool Size 5 1/2 OD in.
 Jars: Make No Serial Number No Anchor Length 64 ft. Size 5 1/2 OD in.
 Did Well Flow? No Reversed Out - Surface Choke Size 3/4 in. Bottom Choke Size 3/4 in.
 Main Hole Size 7 7/8 in. Tool Joint Size 4 1/2 FH in.

Blow: Initial flow period very weak blow; died in five minutes; flushed tool in fifteen minutes - no blow. Final flow period no blow; flushed tool in ten minutes - no blow.

Recovered 10 ft. of drilling mud Chlorides 20,000 ppm
 Recovered _____ ft. of _____
 Recovered _____ ft. of _____
 Recovered _____ ft. of _____
 Recovered _____ ft. of _____

Remarks: Flushed tool fifteen minutes into first flow; flushed tool ten minutes into second flow. Read bottom charts.

Time Set Packer(s) 10:40 ~~A.M.~~ P.M. Time Started Off Bottom 12:24 ~~A.M.~~ P.M. Maximum Temperature 110°
 Initial Hydrostatic Pressure (A) 2233 P.S.I.
 Initial Flow Period Minutes 30 (B) 52 P.S.I. to (C) 57 P.S.I.
 Initial Closed In Period Minutes 33 (D) 79 P.S.I.
 Final Flow Period Minutes 30 (E) 57 P.S.I. to (F) 57 P.S.I.
 Final Closed In Period Minutes 30 (G) 68 P.S.I.
 Final Hydrostatic Pressure (H) 2233 P.S.I.

WESTERN TESTING CO., INC.

Pressure Data

Date 11/3/81

Test Ticket No. 12398

Recorder No. 4331

Capacity 4150

Location 4506 Ft.

Clock No. -

Elevation 3176 Ground Level

Well Temperature 110 °F

Point	Pressure			Time Given	Time Computed
A Initial Hydrostatic Mud	<u>2233</u>	P.S.I.	Open Tool	<u>10:40P</u>	<u>M</u>
B First Initial Flow Pressure	<u>52</u>	P.S.I.	First Flow Pressure	<u>30</u>	<u>30</u> Mins.
C First Final Flow Pressure	<u>57</u>	P.S.I.	Initial Closed-in Pressure	<u>30</u>	<u>33</u> Mins.
D Initial Closed-in Pressure	<u>79</u>	P.S.I.	Second Flow Pressure	<u>30</u>	<u>30</u> Mins.
E Second Initial Flow Pressure	<u>57</u>	P.S.I.	Final Closed-in Pressure	<u>30</u>	<u>30</u> Mins.
F Second Final Flow Pressure	<u>57</u>	P.S.I.			
G Final Closed-in Pressure	<u>68</u>	P.S.I.			
H Final Hydrostatic Mud	<u>2233</u>	P.S.I.			

PRESSURE BREAKDOWN

First Flow Pressure
Breakdown: 6 Inc.
of 5 mins. and a
final inc. of 0 Min.

Initial Shut-In
Breakdown: 11 Inc.
of 3 mins. and a
final inc. of 0 Min.

Second Flow Pressure
Breakdown: 6 Inc.
of 5 mins. and a
final inc. of 0 Min.

Final Shut-In
Breakdown: 10 Inc.
of 3 mins. and a
final inc. of 0 Min.

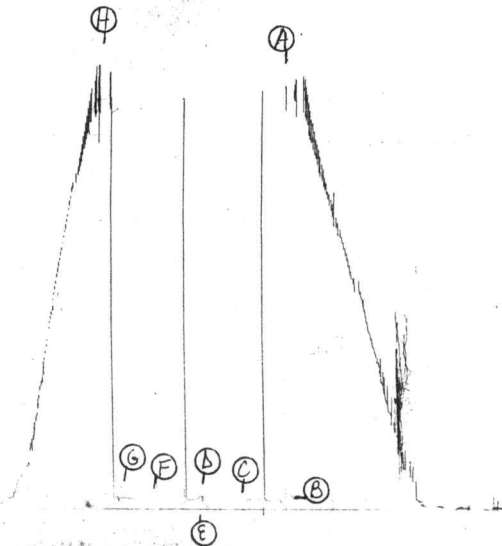
Point Mins.	Press.	Point Minutes	Press.	Point Minutes	Press.	Point Minutes	Press.
P 1 <u>0</u>	<u>52</u>	<u>0</u>	<u>57</u>	<u>0</u>	<u>57</u>	<u>0</u>	<u>57</u>
P 2 <u>5</u>	<u>52</u>	<u>3</u>	<u>57</u>	<u>5</u>	<u>57</u>	<u>3</u>	<u>57</u>
P 3 <u>10</u>	<u>52</u>	<u>6</u>	<u>57</u>	<u>10</u>	<u>57</u>	<u>6</u>	<u>57</u>
P 4 <u>15</u>	<u>FLUSHED TOOL</u>	<u>9</u>	<u>57</u>	<u>15</u>	<u>61</u>	<u>9</u>	<u>58</u>
P 5 <u>20</u>	<u>59</u>	<u>12</u>	<u>57</u>	<u>20</u>	<u>58</u>	<u>12</u>	<u>59</u>
P 6 <u>25</u>	<u>58</u>	<u>15</u>	<u>59</u>	<u>25</u>	<u>57</u>	<u>15</u>	<u>60</u>
P 7 <u>30</u>	<u>57</u>	<u>18</u>	<u>60</u>	<u>30</u>	<u>57</u>	<u>18</u>	<u>61</u>
P 8 _____	_____	<u>21</u>	<u>62</u>	_____	_____	<u>21</u>	<u>62</u>
P 9 _____	_____	<u>24</u>	<u>66</u>	_____	_____	<u>24</u>	<u>64</u>
P10 _____	_____	<u>27</u>	<u>70</u>	_____	_____	<u>27</u>	<u>66</u>
P11 _____	_____	<u>30</u>	<u>75</u>	_____	_____	<u>30</u>	<u>68</u>
P12 _____	_____	<u>33</u>	<u>79</u>	_____	_____	_____	_____
P13 _____	_____	_____	_____	_____	_____	_____	_____
P14 _____	_____	_____	_____	_____	_____	_____	_____
P15 _____	_____	_____	_____	_____	_____	_____	_____
P16 _____	_____	_____	_____	_____	_____	_____	_____
P17 _____	_____	_____	_____	_____	_____	_____	_____
P18 _____	_____	_____	_____	_____	_____	_____	_____
P19 _____	_____	_____	_____	_____	_____	_____	_____
P20 _____	_____	_____	_____	_____	_____	_____	_____

4331

TKT # 12398

A2. Allison
Wilken #2
Dst 1

0



Company J. A. Allison Lease & Well No. Wilken #2
 Elevation 3176 Ground Level Formation - Effective Pay - Ft. Ticket No. 12399
 Date 11/ 4 /81 Sec. 34 Twp. 20S Range 35W County Wichita State Kansas
 Test Approved by Phil Hart Western Representative Steve Eisenhour

Formation Test No. 2 Interval Tested from 4583 ft. to 4618 ft. Total Depth 4618 ft.
 Packer Depth 4578 ft. Size 6 3/4 in. Packer Depth - ft. Size - in.
 Packer Depth 4583 ft. Size 6 3/4 in. Packer Depth - ft. Size - in.
 Depth of Selective Zone Set -

Top Recorder Depth (Inside) 4605 ft. Recorder Number 1564 Cap. 3150
 Bottom Recorder Depth (Outside) 4608 ft. Recorder Number 4331 Cap. 4150
 Below Straddle Recorder Depth - ft. Recorder Number - Cap. -

Drilling Contractor Slawson Drlg. Rig #6 Drill Collar Length 437 I. D. 2.2 in.
 Mud Type mogoploy pac Viscosity 43 Weight Pipe Length - I. D. - in.
 Weight 9.1 Water Loss 20 cc. Drill Pipe Length 4125 I. D. 3.8 in.
 Chlorides 20,000 P.P.M. Test Tool Length 21 ft. Tool Size 5 1/2 OD in.
 Jars: Make No Serial Number No Anchor Length 35 ft. Size 5 1/2 OD in.
 Did Well Flow? No Reversed Out - Surface Choke Size 3/4 in. Bottom Choke Size 3/4 in.
 Main Hole Size 7 7/8 in. Tool Joint Size 4 1/2 FH in.

Blow: Initial flow period very weak blow; died in seventeen minutes. Final flow period no blow; flushed tool in ten minutes. No blow after flush.

Recovered 32 ft. of muddy water Chlorides 21,000 ppm
 Recovered ft. of
 Recovered ft. of
 Recovered ft. of
 Recovered ft. of

Remarks:

Time Set Packer(s) 3:50 A.M. P.M. Time Started Off Bottom 5:50 ~~A.M.~~ P.M. Maximum Temperature 110°
 Initial Hydrostatic Pressure 2246 P.S.I. (A)
 Initial Flow Period 35 Minutes (B) 34 P.S.I. to (C) 34 P.S.I.
 Initial Closed In Period 30 Minutes (D) 728 P.S.I.
 Final Flow Period 30 Minutes (E) 41 P.S.I. to (F) 41 P.S.I.
 Final Closed In Period 30 Minutes (G) 666 P.S.I.
 Final Hydrostatic Pressure 2246 P.S.I. (H)

WESTERN TESTING CO., INC.

Pressure Data

Date 11/4/81 Test Ticket No. 12399
 Recorder No. 4331 Capacity 4150 Location 4608 Ft.
 Clock No. - Elevation 3176 Ground Level Well Temperature 110 °F

Point	Pressure		Time Given	Time Computed
A Initial Hydrostatic Mud	<u>2246</u>	P.S.I.	<u>3:50P</u>	<u>M</u>
B First Initial Flow Pressure	<u>34</u>	P.S.I.	<u>30</u>	<u>Mins 35</u> Mins.
C First Final Flow Pressure	<u>34</u>	P.S.I.	<u>30</u>	<u>Mins 30</u> Mins.
D Initial Closed-in Pressure	<u>728</u>	P.S.I.	<u>30</u>	<u>Mins 30</u> Mins.
E Second Initial Flow Pressure	<u>41</u>	P.S.I.	<u>30</u>	<u>Mins 30</u> Mins.
F Second Final Flow Pressure	<u>41</u>	P.S.I.		
G Final Closed-in Pressure	<u>666</u>	P.S.I.		
H Final Hydrostatic Mud	<u>2246</u>	P.S.I.		

PRESSURE BREAKDOWN

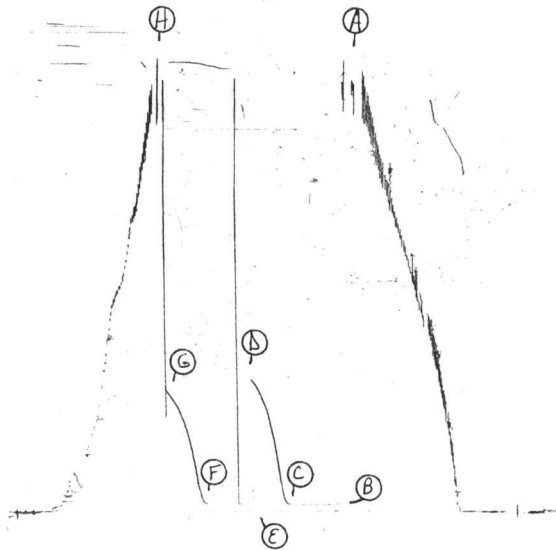
First Flow Pressure		Initial Shut-In		Second Flow Pressure		Final Shut-In	
Breakdown: <u>7</u> Inc.		Breakdown: <u>10</u> Inc.		Breakdown: <u>6</u> Inc.		Breakdown: <u>10</u> Inc.	
of <u>5</u> mins. and a		of <u>3</u> mins. and a		of <u>5</u> mins. and a		of <u>3</u> mins. and a	
final inc. of <u>0</u> Min.		final inc. of <u>0</u> Min.		final inc. of <u>0</u> Min.		final inc. of <u>0</u> Min.	
Point Mins.	Press.	Point Minutes	Press.	Point Minutes	Press.	Point Minutes	Press.
P 1 <u>0</u>	<u>34</u>	<u>0</u>	<u>34</u>	<u>0</u>	<u>41</u>	<u>0</u>	<u>41</u>
P 2 <u>5</u>	<u>34</u>	<u>3</u>	<u>46</u>	<u>5</u>	<u>41</u>	<u>3</u>	<u>57</u>
P 3 <u>10</u>	<u>34</u>	<u>6</u>	<u>131</u>	<u>10</u>	<u>41</u>	<u>6</u>	<u>138</u>
P 4 <u>15</u>	<u>34</u>	<u>9</u>	<u>264</u>	<u>15</u>	<u>52</u>	<u>9</u>	<u>262</u>
P 5 <u>20</u>	<u>34</u>	<u>12</u>	<u>397</u>	<u>20</u>	<u>44</u>	<u>12</u>	<u>362</u>
P 6 <u>25</u>	<u>34</u>	<u>15</u>	<u>489</u>	<u>25</u>	<u>41</u>	<u>15</u>	<u>445</u>
P 7 <u>30</u>	<u>34</u>	<u>18</u>	<u>571</u>	<u>30</u>	<u>41</u>	<u>18</u>	<u>513</u>
P 8 <u>35</u>	<u>34</u>	<u>21</u>	<u>627</u>			<u>21</u>	<u>563</u>
P 9		<u>24</u>	<u>675</u>			<u>24</u>	<u>599</u>
P10		<u>27</u>	<u>711</u>			<u>27</u>	<u>636</u>
P11		<u>30</u>	<u>728</u>			<u>30</u>	<u>666</u>
P12							
P13							
P14							
P15							
P16							
P17							
P18							
P19							
P20							

Flushed tool

4331

TKT # 12399

0



Company J. A. Allison Lease & Well No. Wilken #2

Elevation 3176 Ground Level Formation - Effective Pay - Ft. Ticket No. 12400

Date 11/ 4 /81 Sec. 34 Twp. 20S Range 35W County Wichita State Kansas

Test Approved by Phil Hart Western Representative Steve Eisenhour

Formation Test No. 3 Interval Tested from 4537 ft. to 4563 ft. Total Depth 4618 ft.

Packer Depth 4532 ft. Size 6 3/4 in. Packer Depth 4563 ft. Size 6 3/4 in.

Packer Depth 4537 ft. Size 6 3/4 in. Packer Depth - ft. Size - in.

Depth of Selective Zone Set -

Top Recorder Depth (Inside) 4544 ft. Recorder Number 1564 Cap. 3150

Bottom Recorder Depth (Outside) 4547 ft. Recorder Number 4331 Cap. 4150

Below Straddle Recorder Depth 4618 ft. Recorder Number 10266 Cap. 4775

Drilling Contractor Slawson Drlg. Rig #6 Drill Collar Length 407 I. D. 2.2 in.

Mud Type mogoploy pac Viscosity 43 Weight Pipe Length - I. D. - in.

Weight 9.1 Water Loss 20 cc. Drill Pipe Length 4054 I. D. 3.8 in.

Chlorides 20,000 P.P.M. Test Tool Length 21 ft. Tool Size 5 1/2 OD in.

Jars: Make No Serial Number No Anchor Length 26 ft. Size 5 1/2 in.

Did Well Flow? NO Reversed Out - Surface Choke Size 3/4 in. Bottom Choke Size 3/4 in.

Main Hole Size 7 7/8 in. Tool Joint Size 4 1/2 FH in.

Blow: Initial flow period very weak blow, died in ten minutes; flushed tool fifteen minutes; no blow. Final flow period no blow; flushed ten minutes - no blow.

Recovered 10 ft. of specked oil in drilling mud Chlorides 25,000 ppm

Recovered ft. of

Recovered ft. of

Recovered ft. of

Recovered ft. of

Remarks: Running one extra packer ; flushed tool fifteen minutes into initial flow. Flushed tool ten minutes into final flow period.

Time Set Packer(s) 10:35 A.M. P.M. Time Started Off Bottom 12:35 A.M. P.M. Maximum Temperature 110°

Initial Hydrostatic Pressure 2221 (A) P.S.I.

Initial Flow Period 30 (B) Minutes P.S.I. to (C) 38 P.S.I.

Initial Closed In Period 33 (D) Minutes P.S.I.

Final Flow Period 30 (E) Minutes P.S.I. to (F) 43 P.S.I.

Final Closed In Period 33 (G) Minutes P.S.I.

Final Hydrostatic Pressure 2221 (H) P.S.I.

WESTERN TESTING CO., INC.

Pressure Data

Date 11/4/81 Test Ticket No. 12400
 Recorder No. 4331 Capacity 4150 Location 4547 Ft.
 Clock No. - Elevation 3176 Ground Level Well Temperature 110 °F

Point	Pressure		Time Given	Time Computed
A Initial Hydrostatic Mud	<u>2221</u> P.S.I.	Open Tool	<u>10:35P</u>	<u>M</u>
B First Initial Flow Pressure	<u>36</u> P.S.I.	First Flow Pressure	<u>30</u> Mins.	<u>30</u> Mins.
C First Final Flow Pressure	<u>38</u> P.S.I.	Initial Closed-in Pressure	<u>30</u> Mins.	<u>33</u> Mins.
D Initial Closed-in Pressure	<u>131</u> P.S.I.	Second Flow Pressure	<u>30</u> Mins.	<u>30</u> Mins.
E Second Initial Flow Pressure	<u>44</u> P.S.I.	Final Closed-in Pressure	<u>30</u> Mins.	<u>33</u> Mins.
F Second Final Flow Pressure	<u>43</u> P.S.I.			
G Final Closed-in Pressure	<u>50</u> P.S.I.			
H Final Hydrostatic Mud	<u>2221</u> P.S.I.			

PRESSURE BREAKDOWN

First Flow Pressure
 Breakdown: 6 Inc.
 of 5 mins. and a
 final inc. of 0 Min.

Initial Shut-In
 Breakdown: 11 Inc.
 of 3 mins. and a
 final inc. of 0 Min.

Second Flow Pressure
 Breakdown: 6 Inc.
 of 5 mins. and a
 final inc. of 0 Min.

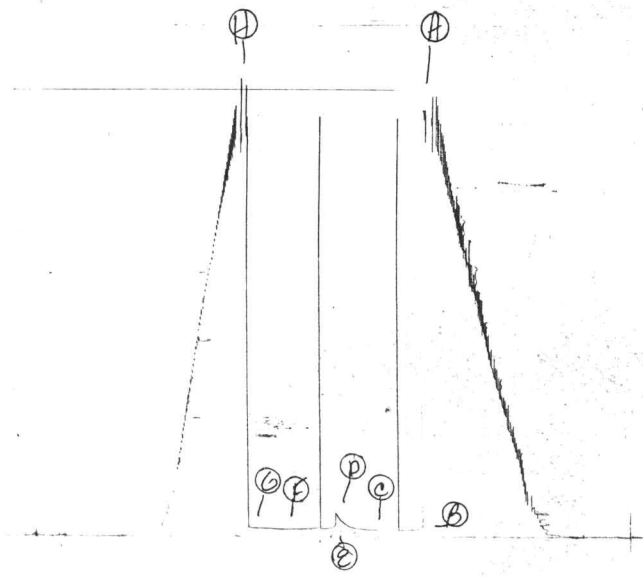
Final Shut-In
 Breakdown: 11 Inc.
 of 3 mins. and a
 final inc. of 0 Min.

Point Mins.	Press.	Point Minutes	Press.	Point Minutes	Press.	Point Minutes	Press.
P 1 <u>0</u>	<u>36</u>	<u>0</u>	<u>38</u>	<u>0</u>	<u>44</u>	<u>0</u>	<u>43</u>
P 2 <u>5</u>	<u>36</u>	<u>3</u>	<u>38</u>	<u>5</u>	<u>44</u>	<u>3</u>	<u>42</u>
P 3 <u>10</u>	<u>36</u>	<u>6</u>	<u>38</u>	<u>10</u>	<u>44</u>	<u>6</u>	<u>41</u>
P 4 <u>15</u>	<u>36</u>	<u>9</u>	<u>38</u>	<u>15</u>	<u>46</u>	<u>9</u>	<u>42</u>
P 5 <u>20</u>	<u>48</u>	<u>12</u>	<u>39</u>	<u>20</u>	<u>44</u>	<u>12</u>	<u>43</u>
P 6 <u>25</u>	<u>41</u>	<u>15</u>	<u>43</u>	<u>25</u>	<u>43</u>	<u>15</u>	<u>44</u>
P 7 <u>30</u>	<u>38</u>	<u>18</u>	<u>44</u>	<u>30</u>	<u>43</u>	<u>18</u>	<u>45</u>
P 8 _____	_____	<u>21</u>	<u>47</u>	_____	_____	<u>21</u>	<u>46</u>
P 9 _____	_____	<u>24</u>	<u>55</u>	_____	_____	<u>24</u>	<u>47</u>
P10 _____	_____	<u>27</u>	<u>69</u>	_____	_____	<u>27</u>	<u>48</u>
P11 _____	_____	<u>30</u>	<u>90</u>	_____	_____	<u>30</u>	<u>49</u>
P12 _____	_____	<u>33</u>	<u>131</u>	_____	_____	<u>33</u>	<u>50</u>
P13 _____	_____	_____	_____	_____	_____	_____	_____
P14 _____	_____	_____	_____	_____	_____	_____	_____
P15 _____	_____	_____	_____	_____	_____	_____	_____
P16 _____	_____	_____	_____	_____	_____	_____	_____
P17 _____	_____	_____	_____	_____	_____	_____	_____
P18 _____	_____	_____	_____	_____	_____	_____	_____
P19 _____	_____	_____	_____	_____	_____	_____	_____
P20 _____	_____	_____	_____	_____	_____	_____	_____

4331

J.A. Allison
Wilken #2
P5+3

TK # 12400
0



10266

TKT # 12400

Below Straddle

J. A. Allison
Wilken # 2
DST 3

