

P. O. BOX 1599 PHONE (316) 838-0601  
WICHITA, KANSAS 67201

Company J. A. Allison Lease & Well No. Pfenninger #1  
Elevation 2201 Ground Level Formation -- Effective Pay -- Ft. Ticket No. 903  
Date 8/21/78 Sec. 8 Twp 20S Range 19W County Pawnee State Kansas  
Test Approved by Arden Ratzlaff Western Representative Vernon Wondra-Ricky L. Bowman

Formation Test No. 1 Interval Tested from 4120' ft. to 4137' ft. Total Depth 4137' ft.  
Packer Depth 4115 ft. Size 6 3/4 in. Packer Depth -- ft. Size -- in.  
Packer Depth 4120 ft. Size 6 3/4 in. Packer Depth -- ft. Size -- in.  
Depth of Selective Zone Set --

Top Recorder Depth (Inside) 4127 ft. Recorder Number 1563 Cap. 4200  
Bottom Recorder Depth (Outside) 4130 ft. Recorder Number 1565 Cap. 3150  
Below Straddle Recorder Depth -- ft. Recorder Number -- Cap. --

Drilling Contractor DNB Rig #2 Drill Collar Length -- I. D. -- in.  
Mud Type starch Viscosity 61 Weight Pipe Length 923' I. D. 2.7 in.  
Weight 10.1 Water Loss 8.6 cc. Drill Pipe Length 3175' I. D. 3.8 in.  
Chlorides 43,000 P.P.M. Test Tool Size 5 1/2 OD in. Tool Joint Size 4 1/2 FH in.  
Jars: Make -- Serial Number -- Anchor Length 17 ft. Size 5 1/2 OD in.  
Did Well Flow? No Reversed Out No Surface Choke Size 3/4 in. Bottom Choke Size 3/4 in.  
Main Hole Size 7 7/8 in. Tool length 22'

Blow: Very weak; Dead 1/2 minute.

Recovered 60 ft. of mud  
Recovered \_\_\_\_\_ ft. of \_\_\_\_\_  
Recovered \_\_\_\_\_ ft. of \_\_\_\_\_  
Recovered \_\_\_\_\_ ft. of \_\_\_\_\_  
Recovered \_\_\_\_\_ ft. of \_\_\_\_\_

Remarks: Slid to 20' to bottom; picked up fluid while sliding.

Time Set Packer(s) 2:55 <sup>A.M.</sup>/<sub>P.M.</sub> = Time Started Off Bottom 4:55 <sup>A.M.</sup>/<sub>P.M.</sub> Maximum Temperature 124  
Initial Hydrostatic Pressure ..... (A) 2201 P.S.I.  
Initial Flow Period ..... Minutes 30 (B) 101 P.S.I. to (C) 85 P.S.I.  
Initial Closed In Period ..... Minutes 30 (D) 80 P.S.I.  
Final Flow Period ..... Minutes 30 (E) 80 P.S.I. to (F) 75 P.S.I.  
Final Closed In Period ..... Minutes 30 (G) 80 P.S.I.  
Final Hydrostatic Pressure ..... (H) 2180 P.S.I.

WESTERN TESTING CO., INC.

Pressure Data

Date 8-21-78 Test Ticket No. 903  
 Recorder No. 1563 Capacity 4200 Location 4127 Ft.  
 Clock No. \_\_\_\_\_ Elevation 2201 Ground Level Well Temperature 124 °F

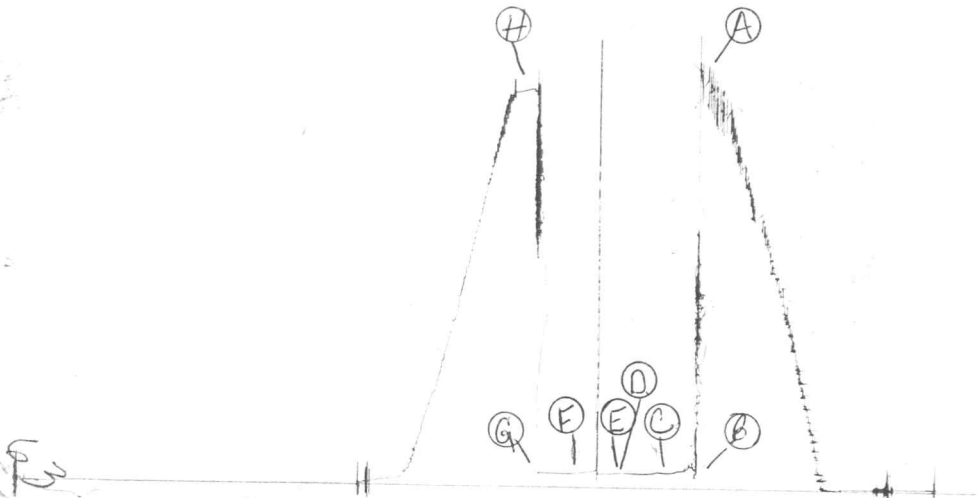
Point	Pressure		Time Given	Time Computed
A Initial Hydrostatic Mud	2201	P.S.I.	2.55A.	M
B First Initial Flow Pressure	101	P.S.I.	30	30
C First Final Flow Pressure	85	P.S.I.	30	30
D Initial Closed-in Pressure	80	P.S.I.	30	30
E Second Initial Flow Pressure	80	P.S.I.	30	27
F Second Final Flow Pressure	75	P.S.I.		
G Final Closed-in Pressure	80	P.S.I.		
H Final Hydrostatic Mud	2180	P.S.I.		

PRESSURE BREAKDOWN

Point Mins.	First Flow Pressure	Initial Shut-In	Second Flow Pressure	Final Shut-In
	Breakdown: <u>6</u> Inc. of <u>5</u> mins. and a final inc. of <u>0</u> Min.	Breakdown: <u>10</u> Inc. of <u>3</u> mins. and a final inc. of <u>0</u> Min.	Breakdown: <u>6</u> Inc. of <u>5</u> mins. and a final inc. of <u>0</u> Min.	Breakdown: <u>9</u> Inc. of <u>3</u> mins. and a final inc. of <u>0</u> Min.
	Point Minutes	Point Minutes	Point Minutes	Point Minutes
P 1 0	101	0	85	75
P 2 5	134	3	80	75
P 3 10	97	6	80	75
P 4 15	92	9	80	76
P 5 20	85	12	80	76
P 6 25	87	15	80	77
P 7 30	85	18	81	78
P 8		21	82	80
P 9		24	82	80
P10		27	84	80
P11		30	80	
P12				
P13				
P14				
P15				
P16				
P17				
P18				
P19				
P20				

Flushed tool

TK4 # 903  
I.





P. O. BOX 1599 PHONE (316) 838-0601  
WICHITA, KANSAS 67201

Company J. A. Allison Lease & Well No. Phenninger #1  
Elevation 2201 Ground Level Formation ? Effective Pay -- Ft. Ticket No. 904  
Date 8/22/78 Sec. 8 Twp 20S Range 19W County Pawnee State Kansas  
Test Approved by Arden Ratzlaff Western Representative Vernon Wondra

Formation Test No. 2 Interval Tested from 4178' ft. to 4186' ft. Total Depth 4186' ft.  
Packer Depth 4171 ft. Size 6 3/4 in. Packer Depth -- ft. Size -- in.  
Packer Depth 4178 ft. Size 6 3/4 in. Packer Depth -- ft. Size -- in.  
Depth of Selective Zone Set --

Top Recorder Depth (Inside) 4168 ft. Recorder Number 1563 Cap. 4200  
Bottom Recorder Depth (Outside) 4180 ft. Recorder Number 1565 Cap. 3150  
Below Straddle Recorder Depth -- ft. Recorder Number -- Cap. --

Drilling Contractor DNB Rig #2 Drill Collar Length -- I. D. -- in.  
Mud Type starch Viscosity 94? Weight Pipe Length 923 I. D. 2.7 in.  
Weight 10.1 Water Loss 5.6 cc. Drill Pipe Length 3220 I. D. 3.8 in.  
Chlorides 44,000 P.P.M. Test Tool Size 5 1/2 OD in. Tool Joint Size 4 1/2 FH in.  
Jars: Make WTC Serial Number 402 Anchor Length 8 ft. Size 5 1/2 OD in.  
Did Well Flow? No Reversed Out No Surface Choke Size 3/4 in. Bottom Choke Size 3/4 in.  
Main Hole Size 7 7/8 in. Tool length 43'

Blow: Very weak blow. Died by end of first flow period. Flushed tool on second opening.  
Few bubbles . Died.

Recovered 5 ft. of mud  
Recovered \_\_\_\_\_ ft. of \_\_\_\_\_  
Recovered \_\_\_\_\_ ft. of \_\_\_\_\_  
Recovered \_\_\_\_\_ ft. of \_\_\_\_\_  
Recovered \_\_\_\_\_ ft. of \_\_\_\_\_

Remarks: \_\_\_\_\_

Time Set Packer(s) 5:05 <sup>A.M.</sup>~~P.M.~~ Time Started Off Bottom 7:05 <sup>A.M.</sup>~~P.M.~~ Maximum Temperature 121  
Initial Hydrostatic Pressure ..... (A) 2256 P.S.I.  
Initial Flow Period ..... Minutes 30 (B) 59 P.S.I. to (C) 38 P.S.I.  
Initial Closed In Period ..... Minutes 30 (D) 34 P.S.I.  
Final Flow Period ..... Minutes 30 (E) 34 P.S.I. to (F) 22 P.S.I.  
Final Closed In Period ..... Minutes 30 (G) 22 P.S.I.  
Final Hydrostatic Pressure ..... (H) 2237 P.S.I.

**WESTERN TESTING CO., INC.**  
**Pressure Data**

Date 8-22-78 Test Ticket No. 904  
 Recorder No. 1563 Capacity 4200 Location 4168 Ft.  
 Clock No. - Elevation 2201 Ground Level Well Temperature 121 °F

Point	Pressure		Time Given	Time Computed
A Initial Hydrostatic Mud	2256 P.S.I.	Open Tool	5:05A. M	
B First Initial Flow Pressure	59 P.S.I.	First Flow Pressure	30 Mins.	30 Mins.
C First Final Flow Pressure	38 P.S.I.	Initial Closed-in Pressure	30 Mins.	30 Mins.
D Initial Closed-in Pressure	34 P.S.I.	Second Flow Pressure	30 Mins.	30 Mins.
E Second Initial Flow Pressure	34 P.S.I.	Final Closed-in Pressure	30 Mins.	30 Mins.
F Second Final Flow Pressure	22 P.S.I.			
G Final Closed-in Pressure	22 P.S.I.			
H Final Hydrostatic Mud	2237 P.S.I.			

**PRESSURE BREAKDOWN**

<b>First Flow Pressure</b> Breakdown: <u>6</u> Inc. of <u>5</u> mins. and a final inc. of <u>0</u> Min.	<b>Initial Shut-In</b> Breakdown: <u>10</u> Inc. of <u>3</u> mins. and a final inc. of <u>0</u> Min.	<b>Second Flow Pressure</b> Breakdown: <u>6</u> Inc. of <u>5</u> mins. and a final inc. of <u>0</u> Min.	<b>Final Shut-In</b> Breakdown: <u>10</u> Inc. of <u>3</u> mins. and a final inc. of <u>0</u> Min.
--	---	---	---

Point Mins.	Press.	Point Minutes	Press.	Point Minutes	Press.	Point Minutes	Press.
P 1 0	59	0	38	0	34	0	22
P 2 5	45	3	38	5	34	3	22
P 3 10	40	6	37	10	34	6	22
P 4 15	40	9	37	15	22	9	22
P 5 20	39	12	37	20	22	12	22
P 6 25	39	15	36	25	22	15	22
P 7 30	38	18	36	30	22	18	22
P 8		21	35			21	22
P 9		24	35			24	22
P10		27	34			27	22
P11		30	34			30	22
P12							
P13							
P14							
P15							
P16							
P17							
P18							
P19							
P20							

Flushed Tool

TR# 904  
L.

