

# TRILOBITE TESTING, L.L.C.

P.O. Box 362 • Hays, Kansas 67601

## Drill-Stem Test Data

Well Name #2 CHENEY Test No. 1 Date 9/15/93  
Company PALOMINO PETROLEUM INC Zone FT SCOTT-MIS  
Address 4924 S E 84th ST NEWTON KS 67114-8827 Elevation 2414 KB  
Co. Rep./Geo. ANNIE WATCHOUS Cont. MALLARD Est. Ft. of Pay \_\_\_\_\_  
Location: Sec. 1 Twp. 21S Rge. 26W Co. NESS State KS

Interval Tested 4260-4390 Drill Pipe Size 4.5" FH  
Anchor Length 130 Wt. Pipe I.D. - 2.7 Ft. Run \_\_\_\_\_  
Top Packer Depth 4255 Drill Collar - 2.25 Ft. Run 300  
Bottom Packer Depth 4260 Mud Wt. 9.6 lb/Gal.  
Total Depth 4390 Viscosity 46 Filtrate 12.6

Tool Open @ 6:28 PM Initial Blow 1/2" BLOW BUILDING TO 1" THEN DECREASING TO SURFACE  
BLOW  
Final Blow WEAK SURFACE BLOW-DIED IN 3 MINUTES

Recovery - Total Feet 70 Flush Tool? NO

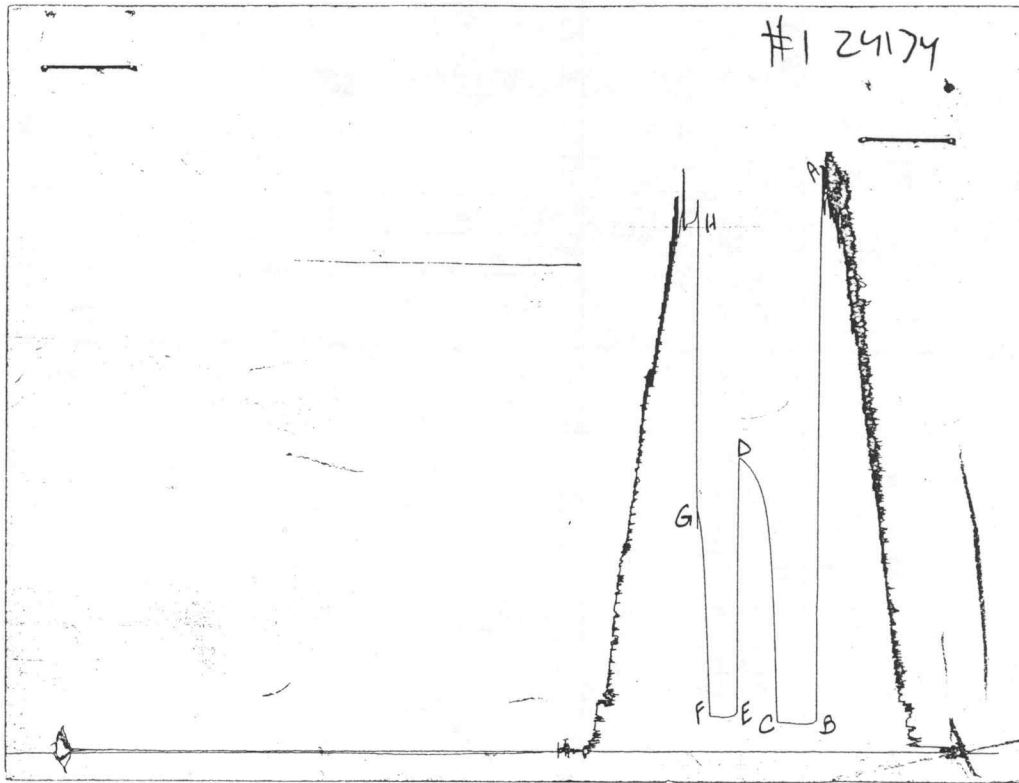
Rec. 70 Feet of MUD  
Rec. \_\_\_\_\_ Feet of \_\_\_\_\_  
Rec. \_\_\_\_\_ Feet of \_\_\_\_\_  
Rec. \_\_\_\_\_ Feet of \_\_\_\_\_  
Rec. \_\_\_\_\_ Feet of \_\_\_\_\_

BHT 115 °F Gravity \_\_\_\_\_ °API @ \_\_\_\_\_ °F Corrected Gravity \_\_\_\_\_ °API  
RW \_\_\_\_\_ @ \_\_\_\_\_ °F Chlorides \_\_\_\_\_ ppm Recovery Chlorides \_\_\_\_\_ ppm System

(A) Initial Hydrostatic Mud 2331.4 PSI AK1 Recorder No. 22150 Range 3925  
(B) First Initial Flow Pressure 101.4 PSI @ (depth) 4264 w / Clock No. 27573  
(C) First Final Flow Pressure 106.3 PSI AK1 Recorder No. 24174 Range 3050  
(D) Initial Shut-in Pressure 1164.2 PSI @ (depth) 4387 w / Clock No. 30401  
(E) Second Initial Flow Pressure 131.4 PSI AK1 Recorder No. \_\_\_\_\_ Range \_\_\_\_\_  
(F) Second Final Flow Pressure 145.6 PSI @ (depth) \_\_\_\_\_ w / Clock No. \_\_\_\_\_  
(G) Final Shut-in Pressure 933.5 PSI Initial Opening 30 Final Flow 15  
(H) Final Hydrostatic Mud 2170.8 PSI Initial Shut-in 30 Final Shut-in 15

Our Representative PAUL SIMPSON

CHART PAGE



This is an actual photograph of recorder chart

	FIELD READING	OFFICE READING
(A) INITIAL HYDROSTATIC MUD	2323	2331.4
(B) FIRST INITIAL FLOW PRESSURE	97	101.4
(C) FIRST FINAL FLOW PRESSURE	104	106.3
(D) INITIAL CLOSED-IN PRESSURE	1160	1164.2
(E) SECOND INITIAL FLOW PRESSURE	126	131.4
(F) SECOND FINAL FLOW PRESSURE	141	145.6
(G) FINAL CLOSED-IN PRESSURE	926	933.5
(H) FINAL HYDROSTATIC MUD	2167	2170.8

# TRILOBITE TESTING L.L.C.

P.O. Box 362 • Hays, Kansas 67601

## Test Ticket

No 6136

Well Name & No. #2 Cheney Test No. 1 Date 9-15-93  
 Company Palomino Petroleum, Inc Zone Tested FT Scott - Miss  
 Address 4924 SE 84th Newton KS 67114-8827 Elevation 2414 KB  
 Co. Rep./Geo. Annie Watchous cont. Mallard Est. Ft. of Pay \_\_\_\_\_  
 Location: Sec. 1 Twp. 26s Rge. 26w Co. Ness State KS  
 No. of Copies 4 Distribution Sheet \_\_\_\_\_ Yes \_\_\_\_\_ No \_\_\_\_\_ Turnkey \_\_\_\_\_ Yes \_\_\_\_\_ No \_\_\_\_\_ Evaluation \_\_\_\_\_

Interval Tested 4260-4390 Drill Pipe Size 4 1/2 FT  
 Anchor Length 130 Top Choke — 1" \_\_\_\_\_ Bottom Choke — 3/4" \_\_\_\_\_  
 Top Packer Depth 4255 Hole Size — 77/8" \_\_\_\_\_ Rubber Size — 63/4" \_\_\_\_\_  
 Bottom Packer Depth 4260 Wt. Pipe I.D. — 2.7 Ft. Run \_\_\_\_\_  
 Total Depth 4390 Drill Collar — 2.25 Ft. Run 300  
 Mud Wt. 9.6 lb/gal. Viscosity 46 Filtrate 126  
 Tool Open @ 6:28 PM Initial Blow 1/2" blow building to 1st then decreasing  
do surface blow  
 Final Blow weak surface blow - died in 3 minutes

Recovery — Total Feet	Feet of Gas in Pipe	Flush Tool?			
Rec. <u>70</u> Feet Of <u>mud</u>		%gas	%oil	%water	%mud
Rec. _____ Feet Of _____		%gas	%oil	%water	%mud
Rec. _____ Feet Of _____		%gas	%oil	%water	%mud
Rec. _____ Feet Of _____		%gas	%oil	%water	%mud
Rec. _____ Feet Of _____		%gas	%oil	%water	%mud

BHT 115 °F Gravity \_\_\_\_\_ °API @ \_\_\_\_\_ °F Corrected Gravity \_\_\_\_\_ °API

RW \_\_\_\_\_ @ \_\_\_\_\_ °F Chlorides \_\_\_\_\_ ppm Recovery Chlorides \_\_\_\_\_ ppm System

- (A) Initial Hydrostatic Mud 2323 PSI Ak1 Recorder No. 22150 Range 3925
- (B) First Initial Flow Pressure 97 PSI @ (depth) 4264 w/Clock No. 27573
- (C) First Final Flow Pressure 104 PSI AK1 Recorder No. 24174 Range 3050
- (D) Initial Shut-In Pressure 1160 PSI @ (depth) 4387 w/Clock No. 30401
- (E) Second Initial Flow Pressure 126 PSI AK1 Recorder No. \_\_\_\_\_ Range \_\_\_\_\_
- (F) Second Final Flow Pressure 141 PSI @ (depth) \_\_\_\_\_ w/Clock No. \_\_\_\_\_
- (G) Final Shut-In Pressure 926 PSI Initial Opening 30 Test 600.00
- (H) Final Hydrostatic Mud 2167 PSI Initial Shut-In 30 Jars \_\_\_\_\_

TRILOBITE TESTING L.L.C. SHALL NOT BE LIABLE FOR DAMAGE OF ANY KIND OF THE PROPERTY OR PERSONNEL OF THE ONE FOR WHOM A TEST IS MADE, OR FOR ANY LOSS SUFFERED OR SUSTAINED, DIRECTLY OR INDIRECTLY, THROUGH THE USE OF ITS EQUIPMENT, OR ITS STATEMENTS OR OPINION CONCERNING THE RESULTS OF ANY TEST. TOOLS LOST OR DAMAGED IN THE HOLE SHALL BE PAID FOR AT COST BY THE PARTY FOR WHOM THE TEST IS MADE.

Final Flow 15 Safety Joint \_\_\_\_\_  
 Final Shut-In 15 Straddle \_\_\_\_\_  
 Circ. Sub \_\_\_\_\_  
 Sampler \_\_\_\_\_  
 Extra Packer \_\_\_\_\_  
 Other \_\_\_\_\_  
 TOTAL PRICE \$ \_\_\_\_\_

Approved By Klee B. Watchous

Our Representative Paul Simpson

# TRILOBITE TESTING, L.L.C.

P.O. Box 362 • Hays, Kansas 67601

## Drill-Stem Test Data

Well Name #2 CHENEY Test No. 2 Date 9/16/93  
Company PALOMINO PETROLEUM INC Zone MISS/DOLOMIT  
Address 4924 S E 84th ST NEWTON KS 67114-8827 Elevation 2414 KB  
Co. Rep./Geo. ANNIE WATCHOUS Cont. MALLARD Est. Ft. of Pay \_\_\_\_\_  
Location: Sec. 1 Twp. 21S Rge. 26W Co. NESS State KS

Interval Tested 4389-4395 Drill Pipe Size 4.5" FH  
Anchor Length 6 Wt. Pipe I.D. - 2.7 Ft. Run \_\_\_\_\_  
Top Packer Depth 4384 Drill Collar - 2.25 Ft. Run 300  
Bottom Packer Depth 4389 Mud Wt. \_\_\_\_\_ 9.2 lb/Gal.  
Total Depth 4395 Viscosity 41 Filtrate 13.5

Tool Open @ 6:18 Initial Blow 1/4" BLOW DECREASING & DIED IN 8 MINUTES

Final Blow NO BLOW - FLUSHED TOOL-NO BLOW AFTER SURGE

Recovery - Total Feet 5 Flush Tool? YES

Rec. 5 Feet of MUD WITH OIL SPOTS IN TOOL  
Rec. \_\_\_\_\_ Feet of \_\_\_\_\_  
Rec. \_\_\_\_\_ Feet of \_\_\_\_\_  
Rec. \_\_\_\_\_ Feet of \_\_\_\_\_  
Rec. \_\_\_\_\_ Feet of \_\_\_\_\_

BHT N/A °F Gravity \_\_\_\_\_ °API @ \_\_\_\_\_ °F Corrected Gravity \_\_\_\_\_ °API  
RW \_\_\_\_\_ @ \_\_\_\_\_ °F Chlorides \_\_\_\_\_ ppm Recovery Chlorides 6500 ppm System

(A) Initial Hydrostatic Mud 2271.3 PSI AK1 Recorder No. \_\_\_\_\_ Range \_\_\_\_\_

(B) First Initial Flow Pressure 35.6 PSI @ (depth) \_\_\_\_\_ w / Clock No. \_\_\_\_\_

(C) First Final Flow Pressure 40.1 PSI AK1 Recorder No. 24174 Range 3050

(D) Initial Shut-in Pressure 495.8 PSI @ (depth) 4392 w / Clock No. 30401

(E) Second Initial Flow Pressure 40.1 PSI AK1 Recorder No. \_\_\_\_\_ Range \_\_\_\_\_

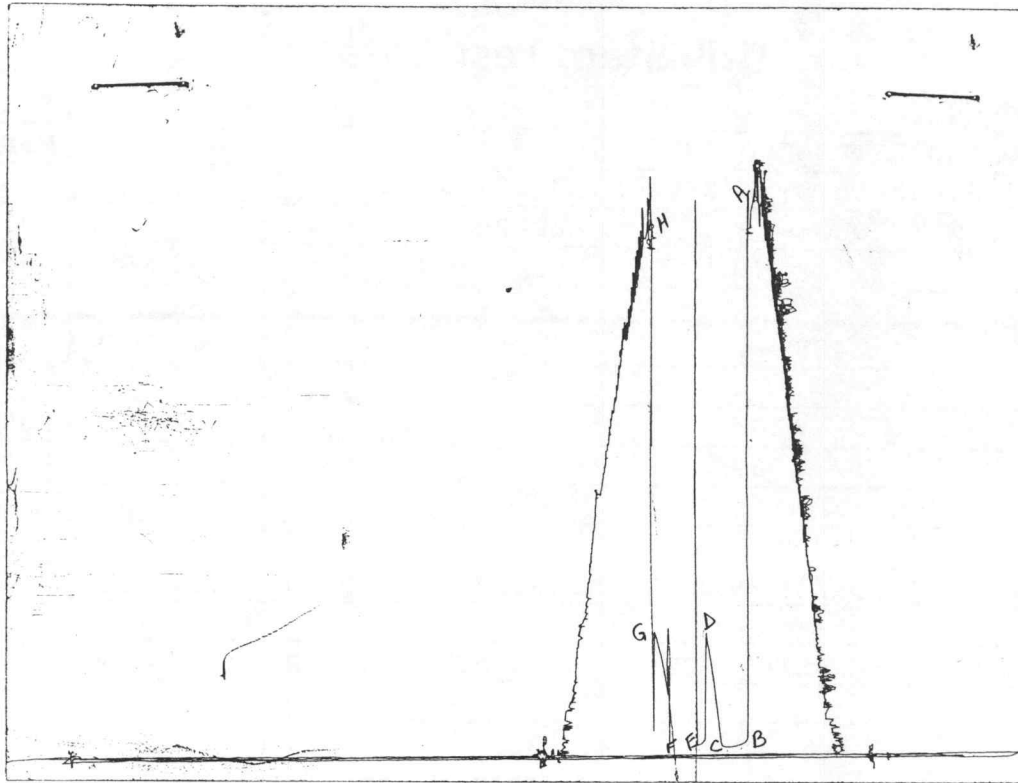
(F) Second Final Flow Pressure 40.1 PSI @ (depth) \_\_\_\_\_ w / Clock No. \_\_\_\_\_

(G) Final Shut-in Pressure 490.6 PSI Initial Opening 15 Final Flow 15

(H) Final Hydrostatic Mud 2210.4 PSI Initial Shut-in 15 Final Shut-in 15

Our Representative PAUL SIMPSON

# CHART PAGE



This is an actual photograph of recorder chart

	FIELD READING	OFFICE READING
(A) INITIAL HYDROSTATIC MUD	2269	2271.3
(B) FIRST INITIAL FLOW PRESSURE	30	35.6
(C) FIRST FINAL FLOW PRESSURE	35	40.1
(D) INITIAL CLOSED-IN PRESSURE	491	495.8
(E) SECOND INITIAL FLOW PRESSURE	35	40.1
(F) SECOND FINAL FLOW PRESSURE	35	40.1
(G) FINAL CLOSED-IN PRESSURE	484	490.6
(H) FINAL HYDROSTATIC MUD	2206	2210.4

# TRILOBITE TESTING L.L.C.

P.O. Box 362 • Hays, Kansas 67601

## Test Ticket

No 6137

Well Name & No. #2 Cheney Test No. 2 Date 9-16-93  
 Company Palomino Petroleum, Inc Zone Tested Miss Dolomite  
 Address Amie / Klee Watchous Elevation 2417  
 Co. Rep./Geo. ↓ ↓ cont. Mallard Est. Ft. of Pay \_\_\_\_\_  
 Location: Sec. 1 Twp. 21s Rge. 20w Co. Neosho State Ks  
 No. of Copies 4 Distribution Sheet \_\_\_\_\_ Yes  No Turnkey \_\_\_\_\_ Yes  No \_\_\_\_\_ Evaluation \_\_\_\_\_

Interval Tested 4389-4395 Drill Pipe Size 4 1/2 FH  
 Anchor Length 6 Top Choke — 1" \_\_\_\_\_ Bottom Choke — 3/4" \_\_\_\_\_  
 Top Packer Depth 4384 Hole Size — 77/8" \_\_\_\_\_ Rubber Size — 6 3/4" \_\_\_\_\_  
 Bottom Packer Depth 4389 Wt. Pipe I.D. — 2.7 Ft. Run \_\_\_\_\_  
 Total Depth 4395 Drill Collar — 2.25 Ft. Run 300  
 Mud Wt. 9.2 lb/gal. Viscosity 41 Filtrate 13.85  
 Tool Open @ 6:18 Initial Blow kur blow decreasing & died in 8 minutes  
 Final Blow no blow flush tool - no blow after surge

Recovery — Total Feet	Feet of Gas in Pipe	Flush Tool?
<u>5</u>		<u>Y</u>
Rec. <u>5</u> Feet Of <u>mud w/oil spots inter</u>	% gas _____ % oil _____	% water _____ % mud _____
Rec. _____ Feet Of _____	% gas _____ % oil _____	% water _____ % mud _____
Rec. _____ Feet Of _____	% gas _____ % oil _____	% water _____ % mud _____
Rec. _____ Feet Of _____	% gas _____ % oil _____	% water _____ % mud _____
Rec. _____ Feet Of _____	% gas _____ % oil _____	% water _____ % mud _____

BHT N/A °F Gravity \_\_\_\_\_ °API @ \_\_\_\_\_ °F Corrected Gravity \_\_\_\_\_ °API  
 RW \_\_\_\_\_ @ \_\_\_\_\_ °F Chlorides \_\_\_\_\_ ppm Recovery Chlorides 6500 ppm System

(A) Initial Hydrostatic Mud 2269 PSI AK1 Recorder No. 22150 Range 3925  
 (B) First Initial Flow Pressure 30 PSI @ (depth) \_\_\_\_\_ w/Clock No. \_\_\_\_\_  
 (C) First Final Flow Pressure 35 PSI AK1 Recorder No. 24174 Range 3050  
 (D) Initial Shut-In Pressure 491 PSI @ (depth) 4392 w/Clock No. 3040  
 (E) Second Initial Flow Pressure 35 PSI AK1 Recorder No. \_\_\_\_\_ Range \_\_\_\_\_  
 (F) Second Final Flow Pressure 35 PSI @ (depth) \_\_\_\_\_ w/Clock No. \_\_\_\_\_  
 (G) Final Shut-In Pressure 484 PSI Initial Opening 15 Test 600  
 (H) Final Hydrostatic Mud 2206 PSI Initial Shut-In 15 Jars \_\_\_\_\_  
 Final Flow 15 Safety Joint \_\_\_\_\_  
 Final Shut-In 15 Straddle \_\_\_\_\_

TRILOBITE TESTING L.L.C. SHALL NOT BE LIABLE FOR DAMAGE OF ANY KIND OF THE PROPERTY OR PERSONNEL OF THE ONE FOR WHOM A TEST IS MADE, OR FOR ANY LOSS SUFFERED OR SUSTAINED, DIRECTLY OR INDIRECTLY, THROUGH THE USE OF ITS EQUIPMENT, OR ITS STATEMENTS OR OPINION CONCERNING THE RESULTS OF ANY TEST. TOOLS LOST OR DAMAGED IN THE HOLE SHALL BE PAID FOR AT COST BY THE PARTY FOR WHOM THE TEST IS MADE

Approved By Klee R. Watchous  
 Our Representative Paul Simpson

Circ. Sub \_\_\_\_\_  
 Sampler \_\_\_\_\_  
 Extra Packer \_\_\_\_\_  
 Other \_\_\_\_\_  
 TOTAL PRICE \$ 600.00