

SUPERIOR TESTERS ENTERPRISES INC.

Great Bend, Kansas

CHART DATA

(316) 792-6902

SLEEPER TRUST #1-10 KANSAS CITY A-D

State KANSAS

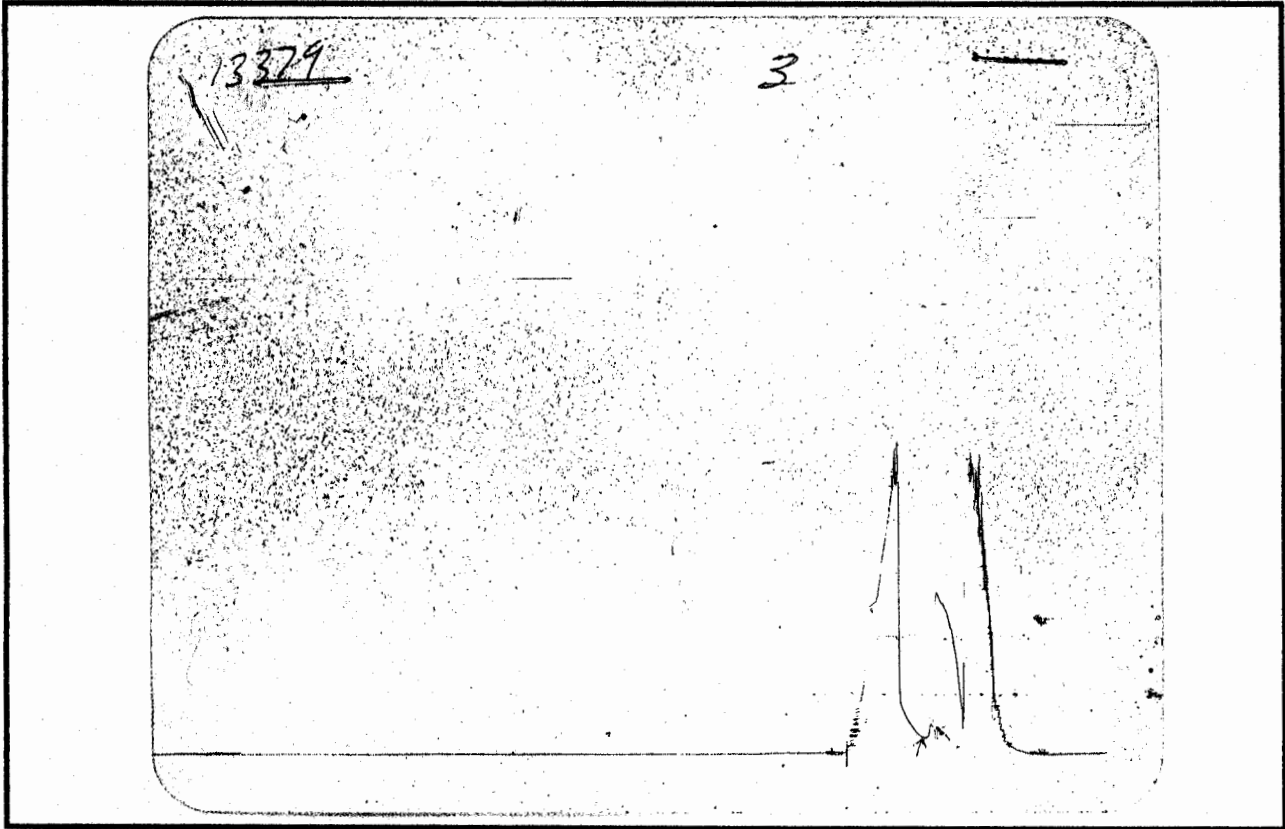
Test Date January 10, 1998

County

Sec Town Range 330 FNL 1250 FWL N/

Field

Report Number 12132



Field Reading

Office Reading

(A)	Initial Hydrostatic Pressure	1560	psi
(B)	Initial Flow Pressure	INVALID	psi
(C)	Final Initial Flow Pressure	INVALID	psi
(D)	Initial Shut-In Pressure	INVALID	psi
(E)	Initial Final Flow Pressure	134	psi
(F)	Final Flow Pressure	103	psi
(G)	Final Shut-In Pressure	258	psi
(H)	Final Hydrostatic Pressure	1630	psi

ELECTRONIC REECORDER DEPTH30ft,RECORDER NUMBER13561

Company: F.C.HOLL COMPANY L.L.C. Lease & Well No. SLEEPER TRUST #1-10 Test #: 3 Date: 1-10-97
 SEC. 10 TWP. 21S RGE. 11W
 15-185-23070

SUPERIOR TESTERS ENTERPRISES INC.

DRILL STEM TEST REPORT

GREAT BEND, KANSAS (316)792-6902

General Information

Test Company Name SUPERIOR TESTERS ENTERPRISES INC.
Company Name F.G.HOLL COMPANY L.L.C.
Lease and Well Number SLEEPER TRUST #1-10
Formation Tested KANSAS CITY A-D
Test Number 3
State KANSAS
County STAFFOD
Field
Test Date 10-Jan-98
Section Town Range 330 FNL 1250 FWL N/2 N/2 N/W 10-21S-11W
Report Number 12132
Elevation Ground Level 1784
Elevation Kelly Bushings 1793
Company Representative FRANK GREENBAUM
Testing Engineer GENE BUDIG

Extra Equipment

Jars NO
Safety Joint YES
Extra Packes No
Straddle No
Hook Wall No
Sampler No
Circulating Sub No
Electronic Recorder NO

Well Information

Drilling Contractor STERLING DRILLING RIG #4

Drill Pipe Length 2551
Drill Pipe I.D. 3.8
Tool Joint Size 4 1/2 XH

Weight Pipe Length
Weight Pipe I.D. 2.76
Tool Joint Size 4 1/2 X.H.

Drill Collar Length 545
Drill Collar I.D. 2.25
Tool Joint Size 4 1/2 X.H.

Mud Weight #/gal 9.20
Viscosity 52.00
Water Loss 8
Chlorides - Pits 6,000
Chlorides - DST

SUPERIOR TESTERS ENTERPRISES INC.

DRILL STEM TEST REPORT

GREAT BEND, KANSAS (316)792-6902

Tool Setting Information

Top Packer Depth 3085
BOTTOM PACKE DEPTH 3090
Number of Packers 2
Packer Size 6 3/4

Test Interval (from) 3090
Test Interval (to) 3145.00
Anchor Length 55
Total Depth (ft) 3145
Hole Size (in) 7 7/8

Pressure Readings

	<i>Field Reading</i>	<i>Office Reading</i>
Maximum Temp	87	
Initial Hydrostatic Pressure	1560	
Initial Flow Pressure	INVALID	
Final Initial Flow Pressure	INVALID	
Initial Shut-In Pressure	INVALID	
Initial Final Flow Pressure	134	
Final Flow Pressure	103	
Final Shut-In Pressure	258	
Final Hydrostatic Pressure	1630	
MECHANICAL RECORDER DEPTH	30	
Recorder Number	13561	
Mechanical Recorder Depth	3140	
Recorder Number	13379	

Comments

SUPERIOR TESTERS ENTERPRISES INC.

DRILL STEM TEST REPORT

GREAT BEND, KANSAS (316)792-6902

Flow Times

Initial Open

Tool Open (from) 4:45
 Tool Open (to) 5:00
 Duration (min) 15

Initial Shut-in

Tool Closed (from) 5:00
 Tool Closed (to) 5:30
 Duration (min) 30

Final Open

Tool Open (from) 5:30
 Tool Open (to) 5:45
 Duration (min) 15

Final Shut-in

Tool Closed (from) 5:45
 Tool Closed (to) 6:15
 Duration (min) 30

Recovery Description

Initial Blow WELAK BLOW BUILT TO 1 INCH INTO THE WATER
 DECREASED AND DIED IN 13 MINUTES

Final Blow WEAK BLOW BUILT TO 1 1/4 INCH INTO THE WATER
 DECREASED AND DIED IN 12 MINUTES

Description	Feet of Recovery	% Gas	% Oil	% Mud	% Water
1) GAS IN THE PIPE	250				
2) GAS CUT MUD	30				
3)					
4)					
5)					
6)					
7)					
8)					
9)					
10)					
11)					
12)					
13)					
14)					
15)					
Total	280				