



DIAMOND TESTING

P.O. Box 157

HOISINGTON, KANSAS 67544

(620) 653-7550 • (800) 542-7313

Page 1 of 2 Pages

Company L. D. Drilling, Inc. Lease & Well No. Bob No. 1
 Elevation 1856 KB Formation Arbuckle Effective Pay -- Ft. Ticket No. C 65
 Date 6-16-08 Sec. 34 Twp. 21S Range 12W County Stafford State Kansas
 Test Approved By Kim B. Shoemaker Diamond Representative Chris Redetzke

Formation Test No. 3 Interval Tested from 3,545 ft. to 3,619 ft. Total Depth 3,619 ft.
 Packer Depth 3,540 ft. Size 6 3/4 in. Packer Depth -- ft. Size -- in.
 Packer Depth 3,545 ft. Size 6 3/4 in. Packer Depth -- ft. Size -- in.
 Depth of Selective Zone Set ft.

Top Recorder Depth (Inside) 3,553 ft. Recorder Number 30035 Cap. 5,000 psi
 Bottom Recorder Depth (Outside) 3,616 ft. Recorder Number 13387 Cap. 4,000 psi
 Below Straddle Recorder Depth ft. Recorder Number psi

Drilling Contractor Petromark Drilling, LLC - Rig 2 Drill Collar Length 122 ft. I.D. 2 1/4 in.
 Mud Type Chemical Viscosity 49 Weight Pipe Length -- ft. I.D. -- in.
 Weight 9.0 Water Loss 8.8 cc. Drill Pipe Length 3,397 ft. I.D. 3 1/2 in.
 Chlorides 9,000 P.P.M. Test Tool Length 26 ft. Tool Size 3 1/2 - IF in.
 Jars: Make Sterling Serial Number 1 Anchor Length 74 ft. Size 4 1/2 - FH in.
 Did Well Flow? No Reversed Out No Surface Choke Size 1 in. Bottom Choke Size 5/8 in.
 Main Hole Size 7 7/8 in. Tool Joint Size 4 1/2 - XH in.

Blow: 1st Open: Strong blow increasing. Off bottom of bucket in 1 min. 2 in., blow back during shut-in.
 2nd open: Strong blow increasing. Off bottom of bucket in 1 min. Gas to surface in 30 mins. (Too small to measure.) Bottom of bucket blow back during shut-in.

Recovered 340 ft. of water cut gassy oily mud = 4.379200 bbls. (Grind out: 5%-water; 5%-gas; 40%-oil; 50%-mud)
 Recovered 434 ft. of water cut gassy oily mud = 5.589920 bbls. (Grind out: 20%-water; 20%-gas; 20%-oil; 40%-mud)
 Recovered 992 ft. of slightly gassy muddy oil cut water = 12.776960 bbls. (Grind out: 3%-gas; 5%-mud; 20%-oil; 72%-
 Recovered 248 ft of oil cut water = 3.194240 bbls. (Grind out: 40%-oil; 60%-water)
 Recovered 620 ft. of water = 7.014480 bbls. (Grind out: 100%-water) Chlorides: 38,000 Ppm water)
 Recovered 2,634 ft. of TOTAL FLUID = 32.954800 bbls.

Remarks Tool Sample Grind Out: water with a scum of oil

Time Set Packer(s)	<u>3:30</u>	XXX P.M.	Time Started Off Bottom	<u>6:30</u>	XXX P.M.	Maximum Temperature	<u>114°</u>
Initial Hydrostatic Pressure			(A)	<u>1713</u>	P.S.I.		
Initial Flow Period	Minutes	<u>30</u>	(B)	<u>352</u>	P.S.I. to (C)	<u>877</u>	P.S.I.
Initial Closed In Period	Minutes	<u>45</u>	(D)	<u>1213</u>	P.S.I.		
Final Flow Period	Minutes	<u>45</u>	(E)	<u>886</u>	P.S.I. to (F)	<u>1179</u>	P.S.I.
Final Closed In Period	Minutes	<u>60</u>	(G)	<u>1218</u>	P.S.I.		
Final Hydrostatic Pressure			(H)	<u>1680</u>	P.S.I.		

GENERAL INFORMATION

Client Information:

Company: L.D. DRILLING CO.

Contact: L.D. DAVIS

Phone: Fax: e-mail:

Site Information:

Contact: KIM SHOEMAKER

Phone: Fax: e-mail:

Well Information:

Name: BOB #1

Operator: L.D. DRILLING CO.

Location-Downhole: DST #3 ARBUCKLE 3,545 - 3,619

Location-Surface: sec 34-21S-12W STAFORD COUNTY

Test Information:

Company: DIAMOND TESTING

Representative: CHRIS

Supervisor: KIM SHOEMAKER

Test Type: CONVENTIONAL Job Number:

Test Unit: NO. 1

Start Date: 2008/06/16 Start Time: 13:57:00

End Date: 2008/06/16 End Time: 22:51:00

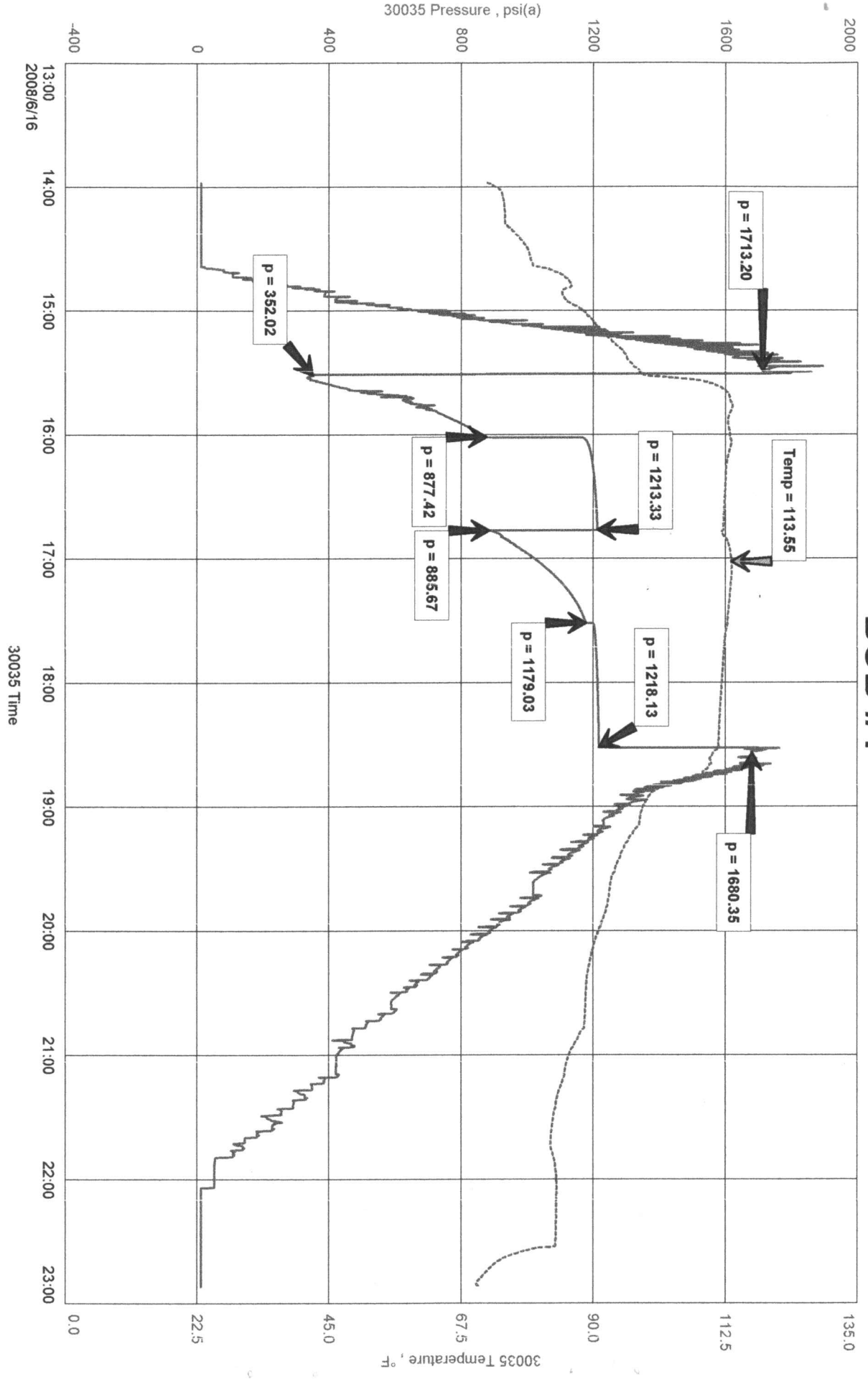
Report Date: Prepared By:

Remarks: Qualified By:

RECOVERED: 340' W.C.G.O.M. 5% WTR, 5% GAS, 40% OIL, 50% MUD
434' W.C.G.O.M. 20% WTR, 20% GAS, 20% OIL, 40% MUD
992' S.G.M.O.C.W. 3% GAS, 5% MUD, 20% OIL, 72% WTR
248' O.C.W. 40% OIL, 60% WTR
620' WTR 100% WTR CHLORIDES: 38,000 ppm
2,634' TOTAL FLUID

TOOL SAMPLE: WTR WITH A SCUM OF OIL

BOB #1



DST #3 outside 13387 3545-3619
 Arbuckle Loc. 3616



This is an actual photograph of recorder chart.

POINT	PRESSURE		Elec. Office Reading	PSI
	Field Reading			
(A) Initial Hydrostatic Mud	1713		1713	PSI
(B) First Initial Flow Pressure	352		352	PSI
(C) First Final Flow Pressure	877		877	PSI
(D) Initial Closed-in Pressure	1213		1213	PSI
(E) Second Initial Flow Pressure	886		886	PSI
(F) Second Final Flow Pressure	1179		1179	PSI
(G) Final Closed-in Pressure	1218		1218	PSI
(H) Final Hydrostatic Mud	1680		1680	PSI