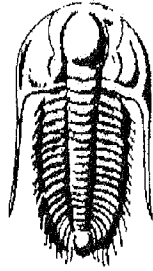


15-185-23124

7-21s-13w



**TRILOBITE  
TESTING, INC.**

Release  
NOV 05 2003  
From  
Confidential

**DRILL STEM TEST REPORT**

Prepared For: **American Warrior Inc**

**ORIGINAL** P O Box 399  
Garden City KS 67846

ATTN: Cecil O'Brate **CONFIDENTIAL**

**7-21s-13w Stafford**

**Witt #1-7**

Start Date: 2001.05.12 @ 14:58:29

End Date: 2001.05.12 @ 21:53:28

Job Ticket #: 14662 DST #: 1

RECEIVED  
KANSAS CORPORATION

AUG 02

CONSERVATION DIVISION

Trilobite Testing, Inc  
PO Box 362 Hays, KS 67601  
ph: 785-625-4778 fax: 785-625-5620

American Warrior Inc

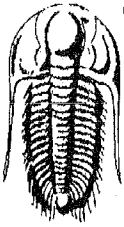
Witt #1-7

7-21s-13w Stafford

DST # 1

LKC

2001.05.12



**TRILOBITE  
TESTING, INC.**

# DRILL STEM TEST REPORT

American Warrior Inc  
P O Box 399  
Garden City KS 67846  
ATTN: Cecil O'Brate

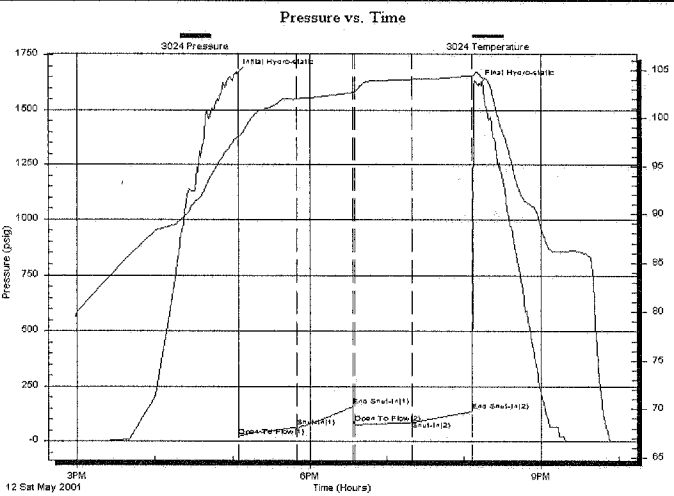
**Witt #1-7**  
**7-21s-13w Stafford**  
Job Ticket: 14662      **DST#: 1**  
Test Start: 2001.05.12 @ 14:58:29

## GENERAL INFORMATION:

Formation: **LKC**  
Deviated: No      Whipstock:      ft (KB)  
Time Tool Opened: 17:04:28  
Time Test Ended: 21:53:28  
Interval: **3455.00 ft (KB) To 3510.00 ft (KB) (TVD)**  
Total Depth: 3510.00 ft (KB) (TVD)  
Hole Diameter: 7.85 inches      Hole Condition: Fair  
Test Type: Conventional Bottom Hole  
Tester: Ray Schwager  
Unit No: 16  
Reference Elevations: 1919.00 ft (KB)  
1910.00 ft (CF)  
KB to GR/CF: 9.00 ft

**Serial #: 3024      Inside**  
Press@RunDepth: 86.80 psig @ 3457.01 ft (KB)      Capacity: 7000.00 psig  
Start Date: 2001.05.12      End Date: 2001.05.12      Last Calib.: 2001.05.12  
Start Time: 14:58:29      End Time: 21:53:28      Time On Btm: 2001.05.12 @ 17:02:58  
Time Off Btm: 2001.05.12 @ 20:11:58

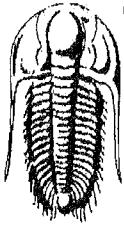
TEST COMMENT: IFP-w eak to fair blow 1/2" to 4 1/2"  
FFP-w eak to good blow 2" to 9"  
times 45-45-45-45



| PRESSURE SUMMARY |                 |              |                      |
|------------------|-----------------|--------------|----------------------|
| Time (Min.)      | Pressure (psig) | Temp (deg F) | Annotation           |
| 0                | 1666.29         | 97.95        | Initial Hydro-static |
| 2                | 19.05           | 98.15        | Open To Flow (1)     |
| 47               | 60.83           | 102.00       | Shut-In(1)           |
| 91               | 157.46          | 102.67       | End Shut-In(1)       |
| 92               | 77.97           | 102.72       | Open To Flow (2)     |
| 137              | 86.80           | 104.03       | Shut-In(2)           |
| 184              | 136.07          | 104.40       | End Shut-In(2)       |
| 189              | 1615.94         | 104.59       | Final Hydro-static   |

| Recovery    |                             |              |
|-------------|-----------------------------|--------------|
| Length (ft) | Description                 | Volume (bbl) |
| 60.00       | O&GCM 15%o 5%g 80%m         | 0.57         |
| 100.00      | HO&GCM 25%oil 30%gas 45%mud | 1.40         |
| 140.00      | Gas in pipe                 | 1.96         |
|             |                             |              |
|             |                             |              |

| Gas Rates |                |                 |                  |
|-----------|----------------|-----------------|------------------|
|           | Choke (inches) | Pressure (psig) | Gas Rate (Mcf/d) |
|           |                |                 |                  |
|           |                |                 |                  |



**TRILOBITE**  
TESTING, INC

**DRILL STEM TEST REPORT**

**TOOL DIAGRAM**

American Warrior Inc

Witt #1-7

P O Box 399  
Garden City KS 67846

7-21s-13w Stafford

ATTN: Cecil O'Brate

Job Ticket: 14662

DST#: 1

Test Start: 2001.05.12 @ 14:58:29

**CONFIDENTIAL**

**Tool Information**

|                                    |                                |                   |                                    |
|------------------------------------|--------------------------------|-------------------|------------------------------------|
| Drill Pipe: Length: 3421.00 ft     | Diameter: 3.80 inches          | Volume: 47.99 bbl | Tool Weight: 2200.00 lb            |
| Heavy Wt. Pipe: Length: 0.00 ft    | Diameter: 0.00 inches          | Volume: 0.00 bbl  | Weight set on Packer: 25000.00 lb  |
| Drill Collar: Length: 30.00 ft     | Diameter: 2.25 inches          | Volume: 0.15 bbl  | Weight to Pull Loose: 70000.00 lb  |
|                                    | <b>Total Volume: 48.14 bbl</b> |                   | Tool Chased 0.00 ft                |
| Drill Pipe Above KB: 17.00 ft      |                                |                   | String Weight: Initial 48000.00 lb |
| Depth to Top Packer: 3455.00 ft    |                                |                   | Final 48000.00 lb                  |
| Depth to Bottom Packer: ft         |                                |                   |                                    |
| Interval between Packers: 55.02 ft |                                |                   |                                    |
| Tool Length: 76.02 ft              |                                |                   |                                    |
| Number of Packers: 2               | Diameter: 6.75 inches          |                   |                                    |

Tool Comments:

**ORIGINAL**

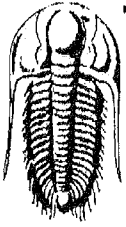
**KCC**

**AUG 01 2001**

**CONFIDENTIAL**

| Tool Description | Length (ft) | Serial No. | Position | Depth (ft) | Accum. Lengths                |
|------------------|-------------|------------|----------|------------|-------------------------------|
| C.O. Sub         | 1.00        |            |          | 3435.00    |                               |
| S.I. Tool        | 5.00        |            |          | 3440.00    |                               |
| HYD S.I. Tool    | 5.00        |            |          | 3445.00    |                               |
| Packer           | 5.00        |            |          | 3450.00    | 21.00 Bottom Of Top Packer    |
| Packer           | 5.00        |            |          | 3455.00    |                               |
| Stubb            | 1.00        |            |          | 3456.00    |                               |
| C.O. Sub         | 1.00        |            |          | 3457.00    |                               |
| Recorder         | 0.01        | 3024       | Inside   | 3457.01    |                               |
| Blank Spacing    | 31.00       |            |          | 3488.01    |                               |
| C.O. Sub         | 1.00        |            |          | 3489.01    |                               |
| Perforations     | 18.00       |            |          | 3507.01    |                               |
| Recorder         | 0.01        | 11085      | Outside  | 3507.02    |                               |
| Bullnose         | 3.00        |            |          | 3510.02    | 55.02 Bottom Packers & Anchor |

**Total Tool Length: 76.02**



**TRILOBITE**  
TESTING, INC.

# DRILL STEM TEST REPORT

FLUID SUMMARY

American Warrior Inc

Witt #1-7

P O Box 399  
Garden City KS 67846

7-21s-13w Stafford

ATTN: Cecil O'Brate

Job Ticket: 14662

DST#: 1

Test Start: 2001.05.12 @ 14:58:29

## Mud and Cushion Information

Mud Type: Gel Chem  
Mud Weight: 9.00 lb/gal  
Viscosity: 47.00 sec/qt  
Water Loss: 10.96 in<sup>3</sup>  
Resistivity: ohm.m  
Salinity: 4000.00 ppm  
Filter Cake: 2.00 inches

Cushion Type:  
Cushion Length: ft  
Cushion Volume: bbl  
Gas Cushion Type:  
Gas Cushion Pressure: psig

Oil API: deg API  
Water Salinity: ppm

## Recovery Information

Recovery Table

| Length<br>ft | Description                 | Volume<br>bbl |
|--------------|-----------------------------|---------------|
| 60.00        | O&GCM 15%o 5%g 80%m         | 0.568         |
| 100.00       | HO&GCM 25%oil 30%gas 45%mud | 1.403         |
| 140.00       | Gas in pipe                 | 1.964         |

Total Length: 300.00 ft      Total Volume: 3.935 bbl

Num Fluid Samples: 0      Num Gas Bombs: 0      Serial #:

Laboratory Name:      Laboratory Location:

Recovery Comments:

Serial #: 3024

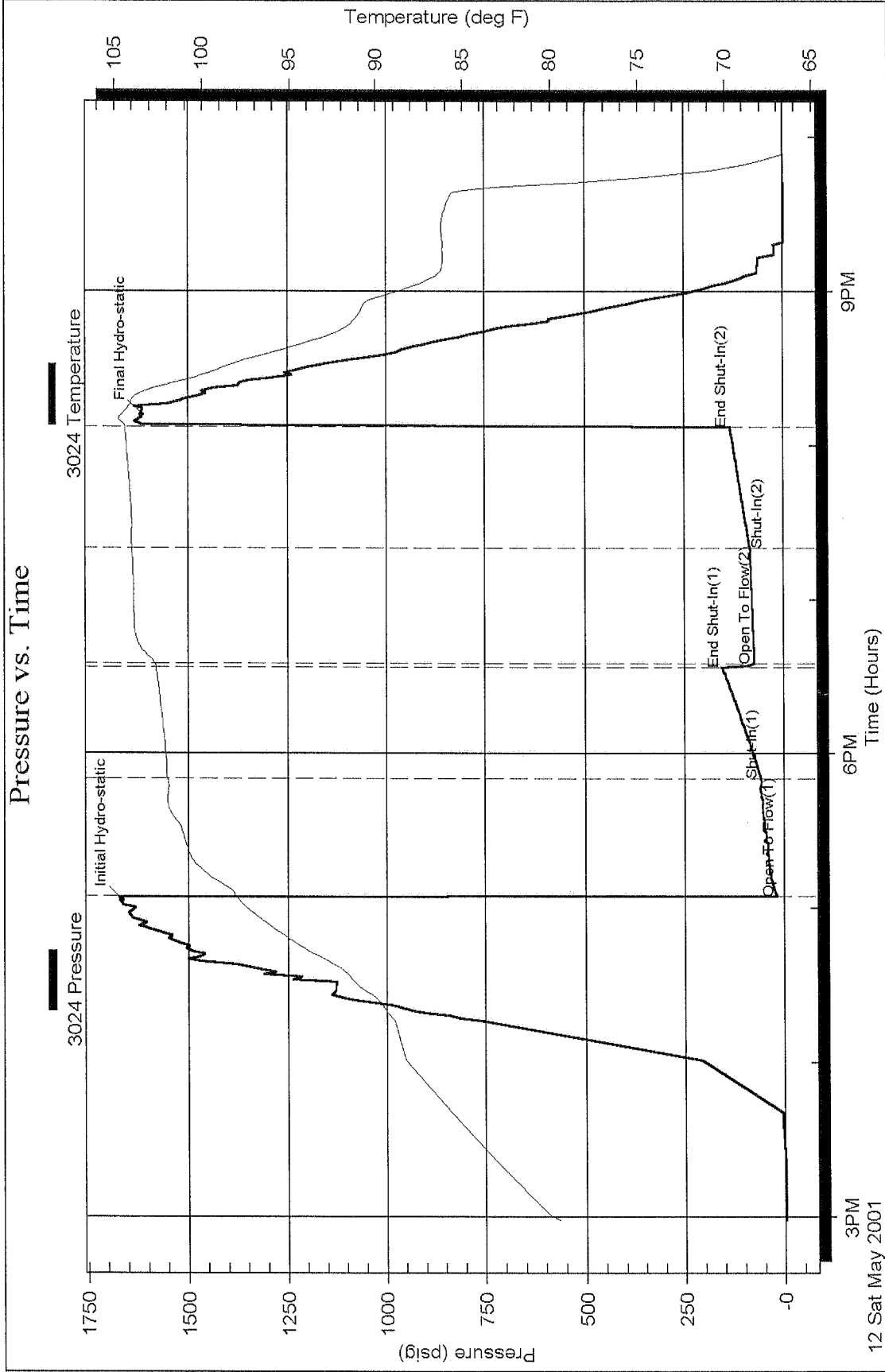
Inside

American Warrior Inc

7-21s-13w Stafford

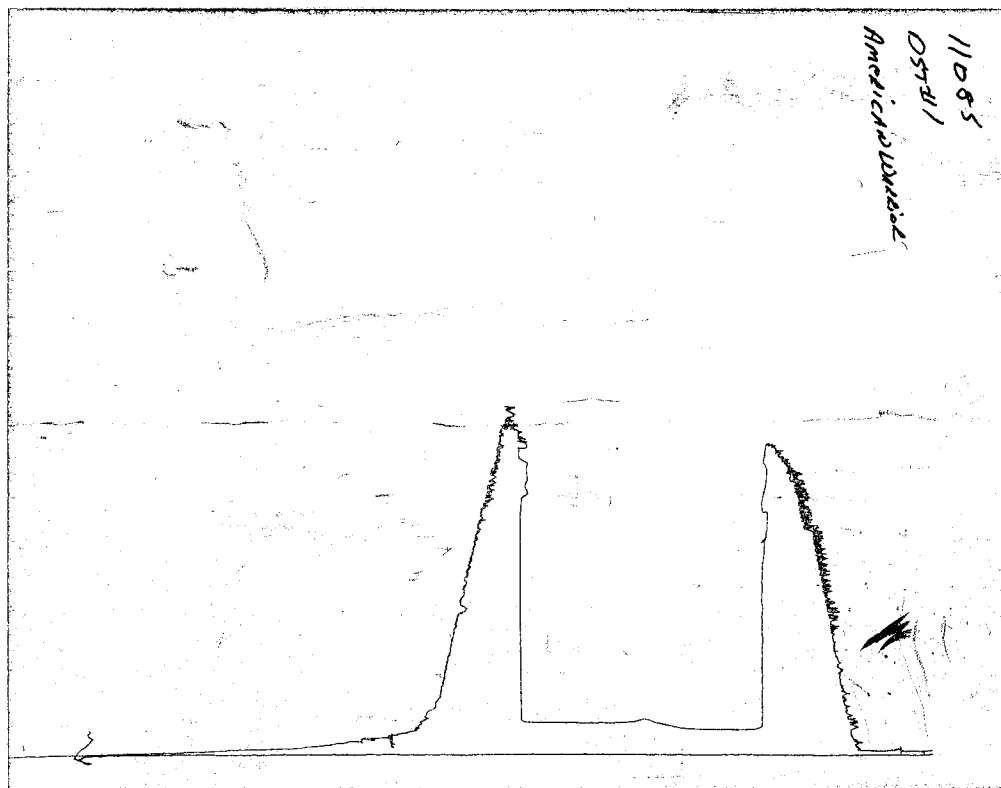
DST Test Number: 1

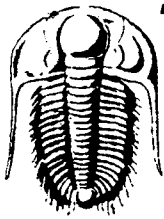
### Pressure vs. Time



# CHART PAGE

This is a photocopy of the actual AK-1 recorder chart





# TRILOBITE TESTING INC.

P.O. Box 362 • Hays, Kansas 67601

No 14662

## Test Ticket

Well Name & No. WITT #1-7 Test No. 1 Date 5-13-01  
 Company AMERICAN WARRIOR, INC Zone Tested LKC  
 Address P.O. Box 399 Garden City, Ka 67846 Elevation 1919 KB 1910 GL  
 Co. Rep / Geo. Ron Nelson Cont. Discovery 1192 Est. Ft. of Pay - Por. - %  
 Location: Sec. 7 Twp. 21<sup>s</sup> Rge. 13<sup>w</sup> Co. STAFFORD State Ks  
 No. of Copies Reg Distribution Sheet (Y, N) - Turnkey (Y, N) - Evaluation (Y, N) -

Interval Tested 3455-3510 Initial Str Wt./Lbs. 48000 Unseated Str Wt./Lbs. 48000  
 Anchor Length 55 Wt. Set Lbs. 25000 Wt. Pulled Loose/Lbs. 70000  
 Top Packer Depth 3450 Tool Weight 2200  
 Bottom Packer Depth 3455 Hole Size — 7 7/8" yes Rubber Size — 6 3/4" yes  
 Total Depth 3510 Wt. Pipe Run - Drill Collar Run 30  
 Mud Wt. 9.2 LCM - Vis. 47 WL 11 Drill Pipe Size 4 1/2 XH Ft. Run 3421  
 Blow Description IFP - WEAK building TO A AIR Blow 1/2" To 4 1/2" Blow  
FFP - WEAK To A Good Blow 2" To 9" Blow  
very wk Blow back on shut-in

Recovery — Total Feet 160 GIP 140 Ft. in DC 30 Ft. in DP 130  
 Rec. 100 Feet Of H0+6CM 30 %gas 25 %oil %water 45 %mud  
 Rec. 60 Feet Of 0+6CM 5 %gas 15 %oil %water 80 %mud  
 Rec. \_\_\_\_\_ Feet Of \_\_\_\_\_ %gas %oil %water %mud  
 Rec. \_\_\_\_\_ Feet Of \_\_\_\_\_ %gas %oil %water %mud  
 Rec. \_\_\_\_\_ Feet Of \_\_\_\_\_ %gas %oil %water %mud  
 BHT 104 °F Gravity - °API D@ - °F Corrected Gravity - °API  
 RW - @ - °F Chlorides - ppm Recovery Chlorides 4000 ppm System

|                                  | AK-1 | Alpine      | PSI | Recorder No.                  | T-On Location              |
|----------------------------------|------|-------------|-----|-------------------------------|----------------------------|
| (A) Initial Hydrostatic Mud      |      | <u>1666</u> |     | <u>3024</u>                   | <u>1400</u>                |
| (B) First Initial Flow Pressure  |      | <u>19</u>   |     | (depth) <u>3457</u>           | T-Started <u>1450</u>      |
| (C) First Final Flow Pressure    |      | <u>60</u>   |     | Recorder No. <u>11085</u>     | T-Open <u>1702</u>         |
| (D) Initial Shut-In Pressure     |      | <u>157</u>  |     | (depth) <u>3507</u>           | T-Pulled <u>2002</u>       |
| (E) Second Initial Flow Pressure |      | <u>77</u>   |     | Recorder No. <u>-</u>         | T-Out <u>2152</u>          |
| (F) Second Final Flow Pressure   |      | <u>86</u>   |     | (depth) <u>-</u>              | T-Off Location <u>2215</u> |
| (G) Final Shut-in Pressure       |      | <u>136</u>  |     | PSI Initial Opening <u>45</u> | Test <u>700</u>            |
| (Q) Final Hydrostatic Mud        |      | <u>1615</u> |     | PSI Initial Shut-in <u>45</u> | Jars _____                 |
|                                  |      |             |     | Final Flow <u>45</u>          | Safety Joint _____         |
|                                  |      |             |     | Final Shut-in <u>45</u>       | Straddle _____             |

TRILOBITE TESTING L.L.C. SHALL NOT BE LIABLE FOR DAMAGE OF ANY KIND OF THE PROPERTY OR PERSONNEL OF THE ONE FOR WHOM A TEST IS MADE, OR FOR ANY LOSS SUFFERED OR SUSTAINED, DIRECTLY OR INDIRECTLY, THROUGH THE USE OF ITS EQUIPMENT, OR ITS STATEMENTS OR OPINION CONCERNING THE RESULTS OF ANY TEST. TOOLS LOST OR DAMAGED IN THE HOLE SHALL BE PAID FOR AT COST BY THE PARTY FOR WHOM THE TEST IS MADE.

Approved By \_\_\_\_\_

Our Representative Ray Schwager Thank You

Extra Packer \_\_\_\_\_  
 Elec. Rec. 150  
 Mileage 73  
 Other \_\_\_\_\_  
 TOTAL PRICE \$ 923

7.52