

15-185-23447

10-21s-13w

### DIAMOND TESTING

P.O. Box 157  
HOISINGTON, KANSAS 67544  
(620) 653-7550 • (800) 542-7313  
STC 30035.D 445

Page 1 of 3 Pages

Company L. D. Drilling, Inc. Lease & Well No. Hall "F" No. 1-10  
Elevation 1879KB Formation Lansing/Kansas City "A" - "F" Effective Pay -- Ft. Ticket No. 2328  
Date 6-26-07 Sec. 10 Twp. 21S Range 13W County Stafford State Kansas

Test Approved By James C. Musgrove Diamond Representative Roger D. Friedly

Formation Test No. 1 Interval Tested from 3,262 ft. to 3,350 ft. Total Depth 3,350 ft.  
Packer Depth 3,257 ft. Size 6 3/4 in. Packer Depth -- ft. Size -- in.  
Packer Depth 3,262 ft. Size 6 3/4 in. Packer Depth -- ft. Size -- in.

Depth of Selective Zone Set          ft.

Top Recorder Depth (Inside) 3,250 ft. Recorder Number 30035 Cap. 5,000 psi  
Bottom Recorder Depth (Outside) 3,347 ft. Recorder Number 13387 Cap. 4,000 psi  
Below Straddle Recorder Depth          ft. Recorder Number          Cap.          psi

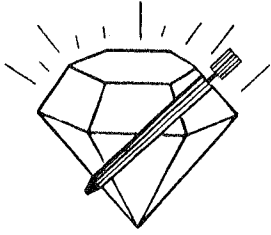
Drilling Contractor Petromark Drilling, LLC - Rig 2 Drill Collar Length 123 ft. I.D. 2 1/4 in.  
Mud Type Chemical Viscosity 49 Weight Pipe Length -- ft. I.D. -- in.  
Weight 9.0 Water Loss 14.2 cc. Drill Pipe Length 3,114 ft. I.D. 3 1/2 in.  
Chlorides 8,000 P.P.M. Test Tool Length 25 ft. Tool Size 3 1/2 - IF in.  
Jars: Make Bowen Serial Number Not Run Anchor Length 25' perf. w/63' drill pipe Size 4 1/2 - FH in.  
Did Well Flow? No Reversed Out No Surface Choke Size 1 in. Bottom Choke Size 5/8 in.  
Main Hole Size 7 7/8 in. Tool Joint Size 4 1/2 - XH in.

1st Open: Strong blow. Off bottom of bucket in 30 secs. Gas to surface in 8 mins. Weak, 1/2 in., blow back during shut-in.  
2nd Open: Strong blow. Off bottom of bucket immediately. Strong blow back off bottom of bucket during shut-in.

Recovered 114 ft. of oil & gas cut watery mud = 1.618800 bbls. (Grind out: 2%-oil; 10%-gas; 16%-water; 72%-mud)  
Recovered 187 ft. of oil & gas cut muddy water = 2.655400 bbls. (Grind out: 6%-oil; 30%-gas; 31%-mud; 33%-water)  
Recovered 186 ft. of oil & mud cut gassy water = 2.641200 bbls. (Grind out: 10%-oil; 10%-mud; 35%-gas; 45%-water)  
Recovered 123 ft. of mud & oil cut gassy water = .605160 bbls. (Grind out: 6%-oil; 8%-mud; 22%-gas; 64%-water)  
Recovered 610 ft. of TOTAL FLUID = 7.520560 bbls.

Remarks Tool Sample Grind Out: BLEW OUT

Time Set Packer(s) 5:34 ~~XXX~~ P.M. Time Started Off Bottom 8:34 ~~XXX~~ P.M. Maximum Temperature 104°  
Initial Hydrostatic Pressure 1551 P.S.I. (A)  
Initial Flow Period 30 Minutes (B) 71 P.S.I. to (C) 201 P.S.I.  
Initial Closed In Period 45 Minutes (D) 406 P.S.I.  
Final Flow Period 45 Minutes (E) 176 P.S.I. to (F) 239 P.S.I.  
Final Closed In Period 60 Minutes (G) 394 P.S.I.  
Final Hydrostatic Pressure 1549 P.S.I. (H)



# DIAMOND TESTING

P.O. Box 157

HOISINGTON, KANSAS 67544

(620) 653-7550 • (800) 542-7313

Page 2 of 3 Pages

## GAS VOLUME REPORT

Company L. D. Drilling, Inc. Lease & Well No. Hall "F" No. 1-10  
 Date 6-26-07 Sec. 10 Twp. 21 S Rge. 13 W Location 2,190' FSL & 1,300' FEL, SEC County Stafford State KS  
 Drilling Contractor Petromark Drilling, LLC - Rig 2 Formation Lansing/Kansas City "A" - "F" DST No. 1  
 Remarks: 1st Open: Gas to surface in 8 mins. Burned poorly.

### INITIAL FLOW

Open Tool: 5:34 p.m.

Time O'Clock	Orifice Size	Gauge	CF/D
5:44 p.m.	1/4 in.	4 psi	18,500
5:49 p.m.	1/4 in.	12 psi	34,000
5:54 p.m.	1/4 in.	14 psi	37,600
5:59 p.m.	1/4 in.	16 psi	40,900
6:04 p.m.	1/4 in.	16 psi	40,900

### FINAL FLOW

Open Tool: 6:49 p.m.

Time O'Clock	Orifice Size	Gauge	CF/D
6:54 p.m.	1/4 in.	14 psi	37,600
6:59 p.m.	1/4 in.	12 psi	34,000
7:04 p.m.	1/4 in.	11 psi	32,400
7:09 p.m.	1/4 in.	10 psi	30,800
7:14 p.m.	1/4 in.	9 psi	29,000
7:19 p.m.	1/4 in.	8 psi	27,000
7:24 p.m.	1/4 in.	7 psi	25,000
7:29 p.m.	1/4 in.	6 psi	22,900
7:34 p.m.	1/4 in.	5 psi	20,700

## GENERAL INFORMATION

### Client Information:

Company: L.D. DRILLING, INC.

Contact: L.D. DAVIS

Phone: Fax: e-mail:

### Site Information:

Contact: JAMES MUSGROVE

Phone: Fax: e-mail:

### Well Information:

Name: HALL 'F' #1-10

Operator: L.D. DRILLING, INC.

Location-Downhole: DST #1 LKC 'A-F' 3,262' - 3,350'

Location-Surface: SEC 10-21S-13W STAFFORD COUNTY

### Test Information:

Company: DIAMOND TESTING

Representative: ROGEER D. FRIEDLY

Supervisor: JAMES MUSGROVE

Test Type: CONVENTIONAL Job Number:

Test Unit: NO. 1

Start Date: 2007/06/26 Start Time: 15:36:00

End Date: 2007/06/26 End Time: 23:13:00

Report Date: Prepared By:

Remarks: Qualified By:

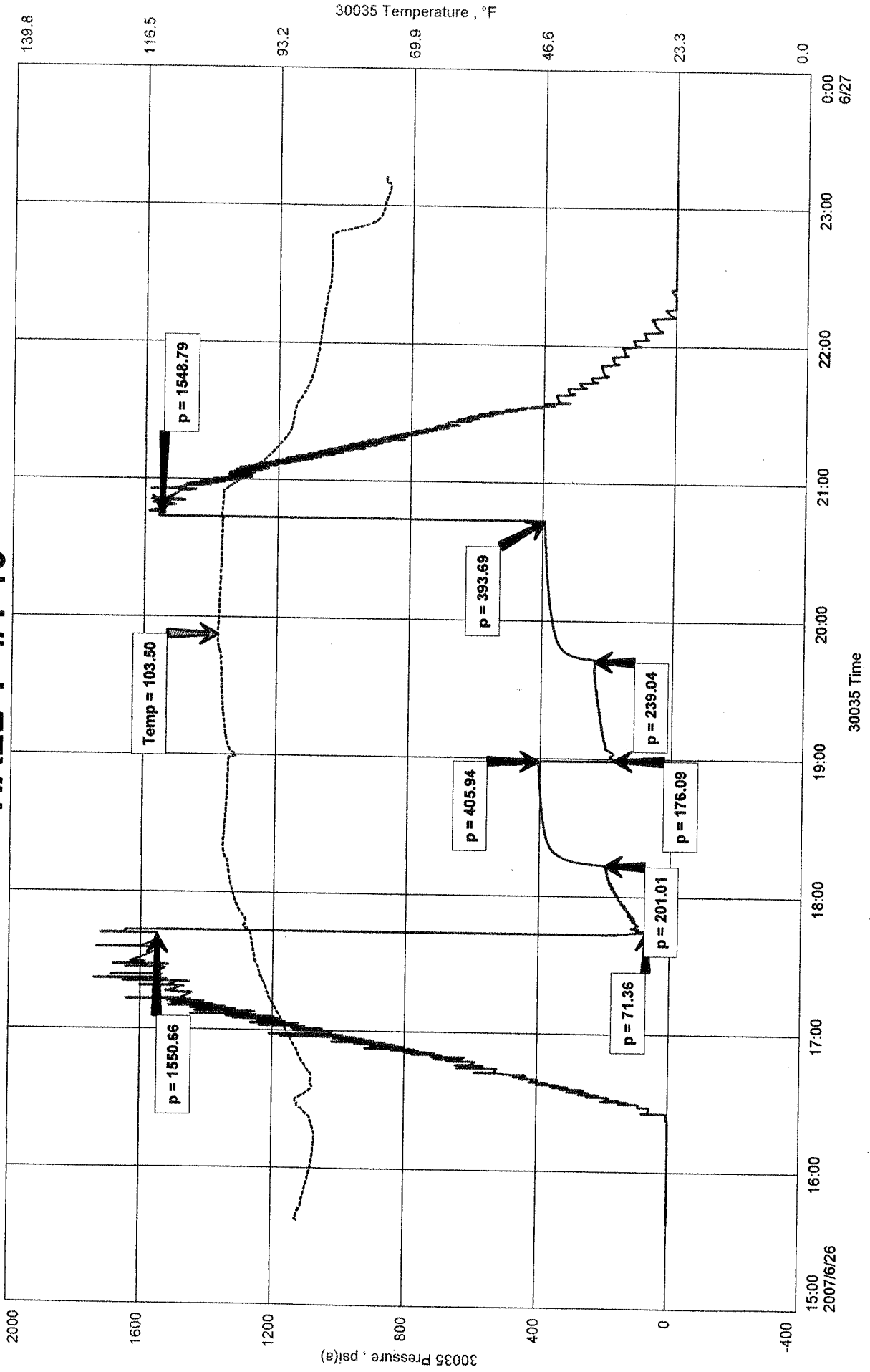
RECOVERED: 114' O&GCWM 2% OIL, 10% GAS, 16% WTR, 72% MUD  
187' O&GCMW 6% OIL, 30% GAS, 31% MUD, 33% WTR  
186' O&MCGW 10% OIL, 10% MUD, 35% GAS, 45% WTR  
123' O&MCGW 6% OIL, 8% MUD, 22% GAS, 62% WTR  
610' TOTALL FLUID

TOOL SAMPLE: BLEW OUT

L.D. DRILLING, INC.  
 DST #1 LKC 'A-F' 3,262' - 3,350'  
 Start Test Date: 2007/06/26  
 Final Test Date: 2007/06/26

HALL 'F' #1-10  
 Formation: DST #1 LKC 'A-F' 3,262' - 3,350'  
 Pool: WILDCAT

# HALL 'F' #1-10

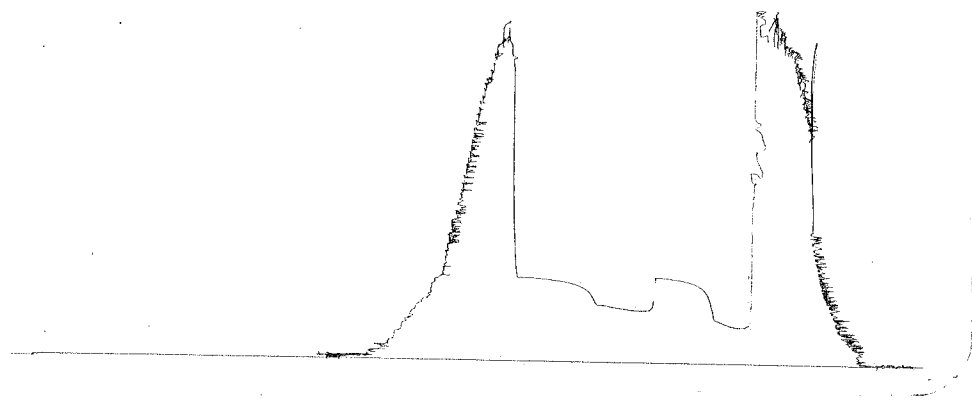


DST # 1 Outside B387

WKC A-F

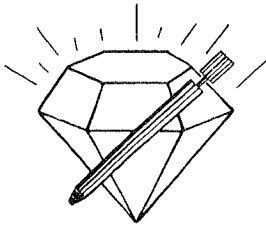
3262-3350

WKC 3347



This is an actual photograph of recorder chart.

POINT	PRESSURE		Elec. Office Reading	PSI
	Field Reading			
(A) Initial Hydrostatic Mud .....	1551	.....	1551	PSI
(B) First Initial Flow Pressure.....	71	.....	71	PSI
(C) First Final Flow Pressure .....	201	.....	201	PSI
(D) Initial Closed-in Pressure .....	406	.....	406	PSI
(E) Second Initial Flow Pressure .....	176	.....	176	PSI
(F) Second Final Flow Pressure.....	239	.....	239	PSI
(G) Final Closed-in Pressure.....	394	.....	394	PSI
(H) Final Hydrostatic Mud .....	1549	.....	1549	PSI



# DIAMOND TESTING

P.O. Box 157  
HOISINGTON, KANSAS 67544  
(620) 653-7550 • (800) 542-7313  
STC 30035.D 446

Company L. D. Drilling, Inc. Lease & Well No. Hall "F" No. 1-10  
Elevation 1879KB Formation Lansing/Kansas City "H" Effective Pay -- Ft. Ticket No. 2329  
Date 6-27-07 Sec. 10 Twp. 21S Range 13W County Stafford State Kansas

Test Approved By James C. Musgrove Diamond Representative Roger D. Friedly

Formation Test No. 2 Interval Tested from 3,382 ft. to 3,410 ft. Total Depth 3,410 ft.  
Packer Depth 3,377 ft. Size 63/4 in. Packer Depth -- ft. Size -- in.  
Packer Depth 3,382 ft. Size 63/4 in. Packer Depth -- ft. Size -- in.

Depth of Selective Zone Set          ft.

Top Recorder Depth (Inside) 3,370 ft. Recorder Number 30035 Cap. 5,000 psi  
Bottom Recorder Depth (Outside) 3,407 ft. Recorder Number 13387 Cap. 4,000 psi  
Below Straddle Recorder Depth          ft. Recorder Number          Cap.          psi

Drilling Contractor Petromark Drilling, LLC - Rig 2 Drill Collar Length 123 ft. I.D. 2 1/4 in.  
Mud Type Chemical Viscosity 44 Weight Pipe Length -- ft. I.D. -- in.  
Weight 9.35 Water Loss 15.4 cc. Drill Pipe Length 3,234 ft. I.D. 3 1/2 in.  
Chlorides 11,000 P.P.M. Test Tool Length 25 ft. Tool Size 3 1/2 - IF in.  
Jars: Make Bowen Serial Number Not Run Anchor Length 28 ft. Size 4 1/2 - FH in.  
Did Well Flow? No Reversed Out No Surface Choke Size 1 in. Bottom Choke Size 5/8 in.  
Main Hole Size 7 7/8 in. Tool Joint Size 4 1/2 - XH in.

Blow: 1st Open: Weak, 1/8 in., blow increasing to 8 1/2 ins. No blow back during shut-in.  
2nd Open: Weak surface blow increasing to 7 1/2 ins. No blow back during shut-in.

Recovered 31 ft. of gas in pipe  
Recovered 10 ft. of clean oil = .142000 bbls. (Gravity: 33.6 @ 60°)  
Recovered 205 ft. of muddy water with oil specks = 1.769560 bbls. (Grind out: 11%-mud; 89%-water) Chlorides: 77,500 Ppm  
Recovered 215 ft. of TOTAL FLUID = 1.911560 bbls.

Recovered          ft. of           
Remarks Tool Sample Grind Out: 1%-oil; 1%-mud; 98%-water

Time Set Packer(s) 10:24 ~~XXX~~ A.M. Time Started Off Bottom 1:24 ~~XXX~~ P.M. Maximum Temperature 104°  
Initial Hydrostatic Pressure 1611 P.S.I. (A)  
Initial Flow Period 30 Minutes (B) 13 P.S.I. to (C) 76 P.S.I.  
Initial Closed In Period 45 Minutes (D) 251 P.S.I.  
Final Flow Period 45 Minutes (E) 78 P.S.I. to (F) 108 P.S.I.  
Final Closed In Period 60 Minutes (G) 247 P.S.I.  
Final Hydrostatic Pressure 1610 P.S.I. (H)

## GENERAL INFORMATION

### Client Information:

Company: L.D. DRILLING, INC.

Contact: L.D. DAVIS

Phone: Fax: e-mail:

### Site Information:

Contact: JAMES MUSGROVE

Phone: Fax: e-mail:

### Well Information:

Name: HALL 'F' #1-10

Operator: L.D. DRILLING, INC.

Location-Downhole: DST #2 LKC 'H' 3,382' - 3,410'

Location-Surface: SEC 10-21S-13W STAFFORD COUNTY

### Test Information:

Company: DIAMOND TESTING

Representative: ROGER D. FRIEDLY

Supervisor: JAMES MUSGROVE

Test Type: CONVENTIONAL Job Number:

Test Unit: NO. 1

Start Date: 2007/06/27 Start Time: 08:53:00

End Date: 2007/06/27 End Time: 15:09:00

Report Date: Prepared By:

Qualified By:

### Remarks:

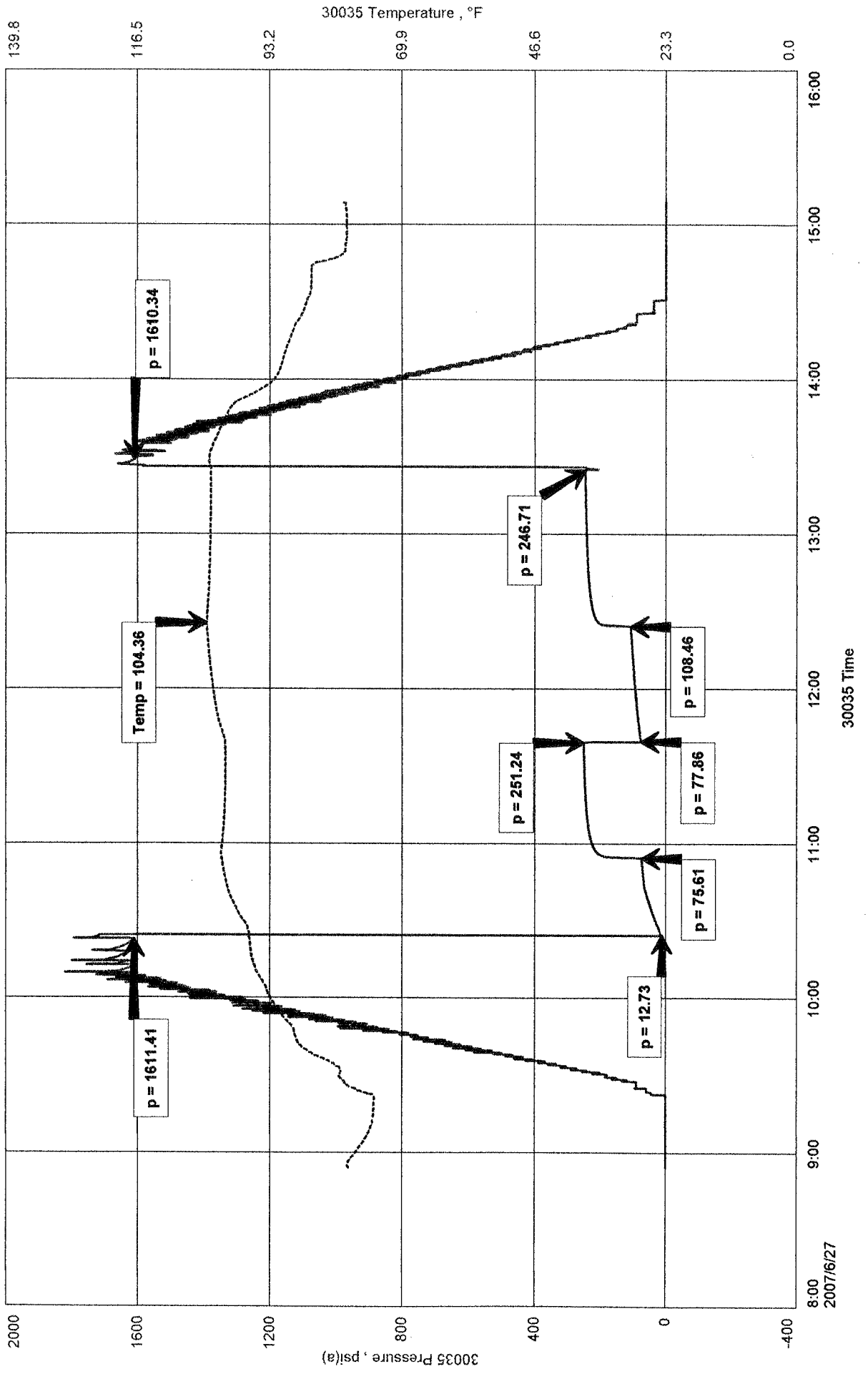
RECOVERED: 31' GAS IN PIPE  
10' CLEAN OIL 33.6 GRAVITY @ 60 deg.  
205' MW 11 % MUD 89% WTR WITH OIL SPECKS - CHLORIDES 77,500 Ppm.  
215' TOTAL FLUID

TOOL SAMPLE: 1% OIL, 1% MUD, 98% WTR

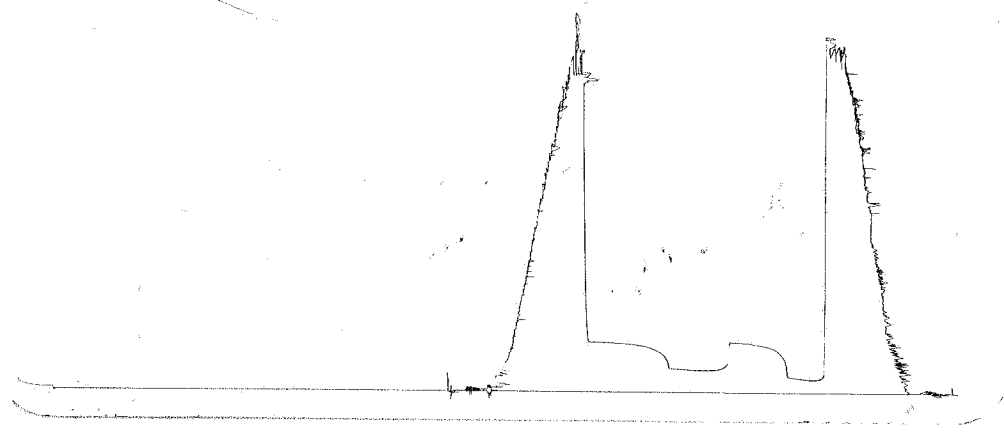
L.D. DRILLING, INC.  
 DST #2 LKC 'H' 3,382' - 3,410'  
 Start Test Date: 2007/06/27  
 Final Test Date: 2007/06/27

HALL 'F' #1-10  
 Formation: DST #2 LKC 'H' 3,382' - 3,410'  
 Pool: WILDCAT

# HALL 'F' #1-10

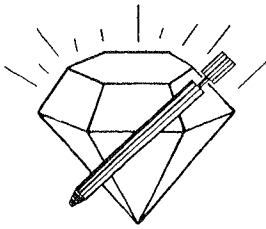


DST # 2 Outside 13387  
 LKC 'H' 3382-3410  
 LDC 3407



This is an actual photograph of recorder chart.

POINT	PRESSURE		Elec. Office Reading	PSI
	Field Reading			
(A) Initial Hydrostatic Mud	1611		1611	PSI
(B) First Initial Flow Pressure	13		13	PSI
(C) First Final Flow Pressure	76		76	PSI
(D) Initial Closed-in Pressure	251		251	PSI
(E) Second Initial Flow Pressure	78		78	PSI
(F) Second Final Flow Pressure	108		108	PSI
(G) Final Closed-in Pressure	247		247	PSI
(H) Final Hydrostatic Mud	1610		1610	PSI



# DIAMOND TESTING

P.O. Box 157  
HOISINGTON, KANSAS 67544  
(620) 653-7550 • (800) 542-7313  
STC 30035.D 447

Company L. D. Drilling, Inc. Lease & Well No. Hall "F" No. 1-10  
Elevation 1879KB Formation Lansing/Kansas City "I" - "K" Effective Pay -- Ft. Ticket No. 2330  
Date 6-28-07 Sec. 10 Twp. 21S Range 13W County Stafford State Kansas

Test Approved By James C. Musgrove Diamond Representative Roger D. Friedly

Formation Test No. 3 Interval Tested from 3,412 ft. to 3,478 ft. Total Depth 3,478 ft.

Packer Depth 3,407 ft. Size 6 3/4 in. Packer Depth -- ft. Size -- in.

Packer Depth 3,412 ft. Size 6 3/4 in. Packer Depth -- ft. Size -- in.

Depth of Selective Zone Set          ft.

Top Recorder Depth (Inside) 3,400 ft. Recorder Number 30035 Cap. 5,000 psi

Bottom Recorder Depth (Outside) 3,475 ft. Recorder Number 13387 Cap. 4,000 psi

Below Straddle Recorder Depth          ft. Recorder Number          Cap.          psi

Drilling Contractor Petromark Drilling, LLC - Rig 2 Drill Collar Length 123 ft. I.D. 2 1/4 in.

Mud Type Chemical Viscosity 44 Weight Pipe Length -- ft. I.D. -- in.

Weight 9.35 Water Loss 15.4 cc. Drill Pipe Length 3,264 ft. I.D. 3 1/2 in.

Chlorides 11,000 P.P.M. Test Tool Length 25 ft. Tool Size 3 1/2 - IF in.

Jars: Make Bowen Serial Number Not Run Anchor Length 34' perf. w/32' drill pipe Size 4 1/2 - FH in.

Did Well Flow? No Reversed Out No Surface Choke Size 1 in. Bottom Choke Size 5/8 in.

Main Hole Size 7 7/8 in. Tool Joint Size 4 1/2 - XH in.

Blow: 1st Open: Fair, 1 in., blow increasing. Off bottom of bucket in 15 1/2 mins. Weak, 1/2 in., blow back during shut-in.

2nd Open: Fair, 1 in., blow increasing. Off bottom of bucket in 14 mins. Fair, 3 in., blow back during shut-in.

Recovered 515 ft. of gas in pipe

Recovered 45 ft. of gas & water cut oily mud = .639000 bbls. (Grind out: 10%-gas; 11%-water; 34%-oil; 45%-mud)

Recovered 185 ft. of muddy water with a scum of oil = 1.485560 bbls. (Grind out: 10%-mud; 90%-water)

Recovered 230 ft. of TOTAL FLUID = 2.124560 bbls. Chlorides: 42,500 Ppm

Recovered          ft. of         

Remarks Tool Sample Grind Out: 100%-salt water with good oil spots

Time Set Packer(s) 2:10 ~~P.M.~~ A.M. Time Started Off Bottom 5:10 ~~P.M.~~ A.M. Maximum Temperature 103°

Initial Hydrostatic Pressure ..... (A) 1631 P.S.I.

Initial Flow Period ..... Minutes 30 (B) 17 P.S.I. to (C) 70 P.S.I.

Initial Closed In Period ..... Minutes 45 (D) 636 P.S.I.

Final Flow Period ..... Minutes 45 (E) 80 P.S.I. to (F) 109 P.S.I.

Final Closed In Period ..... Minutes 60 (G) 587 P.S.I.

Final Hydrostatic Pressure ..... (H) 1631 P.S.I.

## GENERAL INFORMATION

### Client Information:

Company: L.D. DRILLING, INC.

Contact: L.D. DAVIS

Phone: Fax: e-mail:

### Site Information:

Contact: JAMES MUSGROVE

Phone: Fax: e-mail:

### Well Information:

Name: HALL 'F' #1-10

Operator: L.D DRILLING, INC.

Location-Downhole: DST #3 LKC 'I-K' 3,412' - 3,478'

Location-Surface: SEC 10-21S-13W STAFFORD COUNTY

### Test Information:

Company: DIAMOND TESTING

Representative: ROGER D. FRIEDLY

Supervisor: JAMES MUSGROVE

Test Type: CONVENTIONAL Job Number:

Test Unit: NO. 1

Start Date: 2007/06/28 Start Time: 00:11:00

End Date: 2007/06/28 End Time: 07:10:00

Report Date: Prepared By:

Remarks: Qualified By:

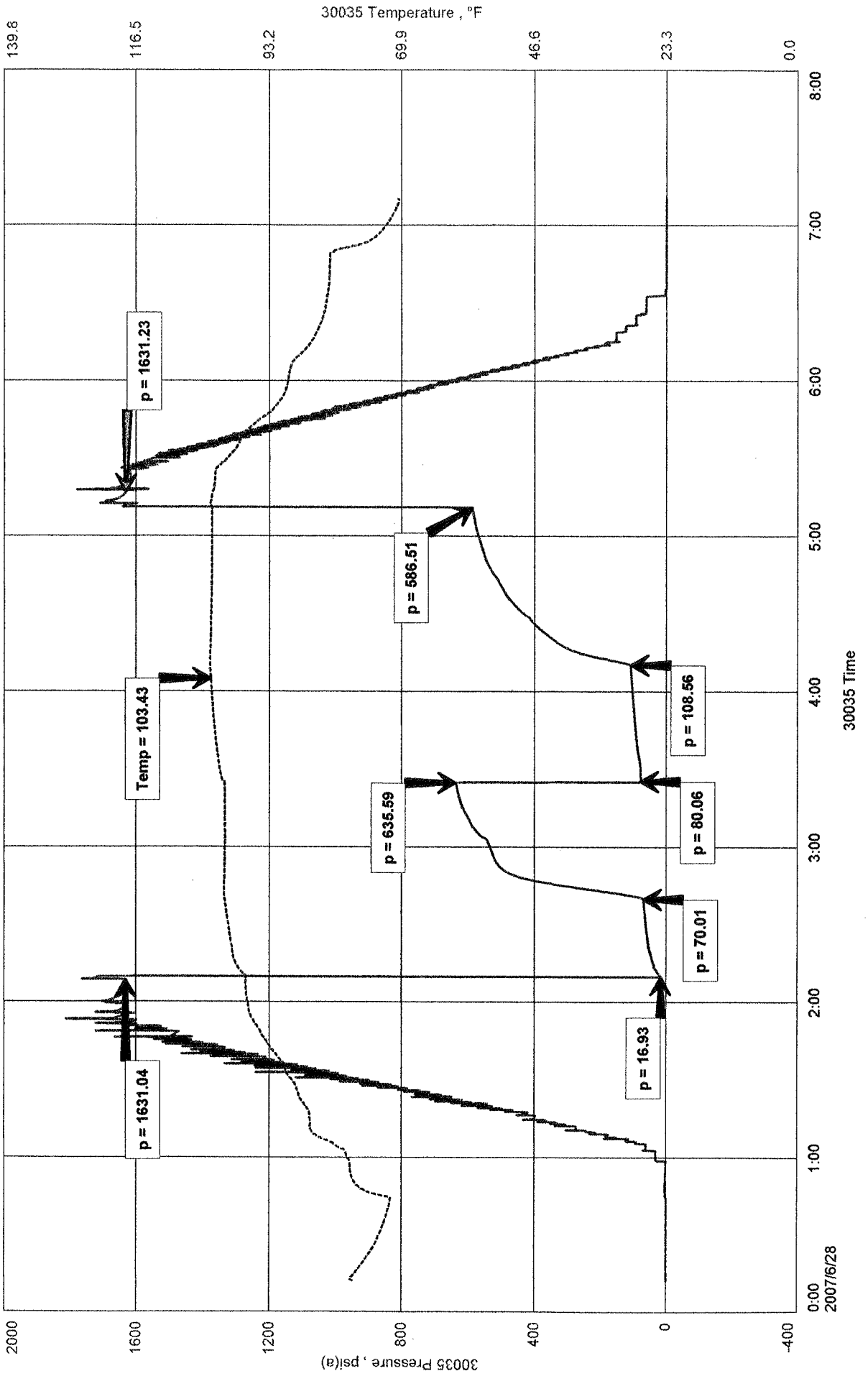
RECOVERED: 515' GAS IN PIPE  
45' G&WCOM 10% GAS, 11% WTR, 34% OIL, 45% MUD  
185' MS 10% MUD, 90% WTR WITHA SCUM OF OIL ( CHLORIDES 42,500 Ppm)  
220' TOTAL FLUID

TOOL SAMPLE: 100% SW WITH GOOD OIL SPOTS

L.D. DRILLING, INC.  
 DST #3 LKC 'I-K' 3,412' - 3,478'  
 Start Test Date: 2007/06/28  
 Final Test Date: 2007/06/28

HALL 'F' #1-10  
 Formation: DST #3 LKC 'I-K' 3,412' - 3,478'  
 Pool: WILDCAT

# HALL 'F' #1-10

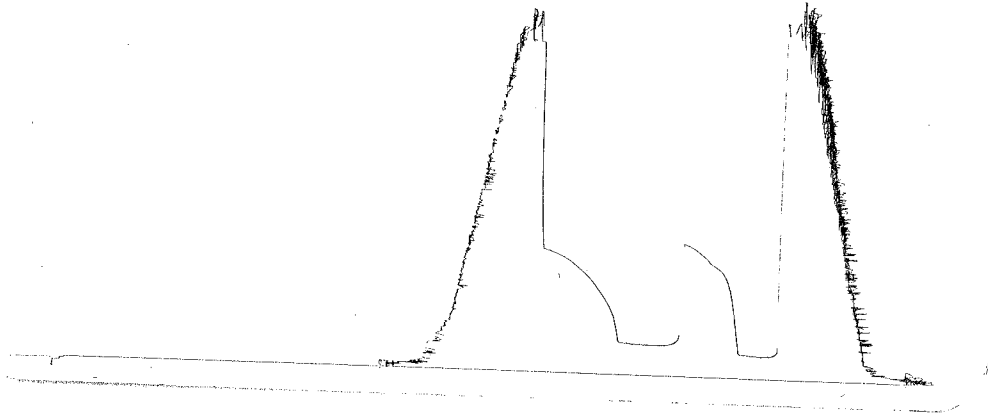


DST #3 outside 13387

LKC 'I-K'

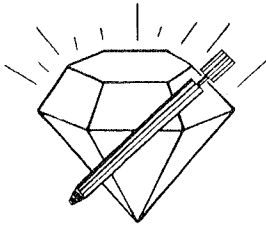
3412-3478

LDC 3475



This is an actual photograph of recorder chart.

POINT	PRESSURE		Elec. Office Reading	PSI
	Field Reading			
(A) Initial Hydrostatic Mud .....	1631	1631		PSI
(B) First Initial Flow Pressure.....	17	17		PSI
(C) First Final Flow Pressure .....	70	70		PSI
(D) Initial Closed-in Pressure .....	636	636		PSI
(E) Second Initial Flow Pressure.....	80	80		PSI
(F) Second Final Flow Pressure.....	109	109		PSI
(G) Final Closed-in Pressure.....	587	587		PSI
(H) Final Hydrostatic Mud.....	1631	1631		PSI



**DIAMOND TESTING**  
P.O. Box 157  
**HOISINGTON, KANSAS 67544**  
(620) 653-7550 • (800) 542-7313  
STC 30035.D448

Company L. D. Drilling, Inc. Lease & Well No. Hall "F" No. 1-10  
Elevation 1879KB Formation Arbuckle Effective Pay -- Ft. Ticket No. 2331  
Date 6-28-07 Sec. 10 Twp. 21S Range 13W County Stafford State Kansas

Test Approved By James C. Musgrove Diamond Representative Roger D. Friedly

Formation Test No. 4 Interval Tested from 3,488 ft. to 3,546 ft. Total Depth 3,546 ft.

Packer Depth 3,483 ft. Size 6 3/4 in. Packer Depth -- ft. Size -- in.

Packer Depth 3,488 ft. Size 6 3/4 in. Packer Depth -- ft. Size -- in.

Depth of Selective Zone Set          ft.

Top Recorder Depth (Inside) 3,476 ft. Recorder Number 30035 Cap. 5,000 psi

Bottom Recorder Depth (Outside) 3,543 ft. Recorder Number 13387 Cap. 4,000 psi

Below Straddle Recorder Depth          ft. Recorder Number          Cap.          psi

Drilling Contractor Petromark Drilling, LLC - Rig 2 Drill Collar Length 123 ft. I.D. 2 1/4 in.

Mud Type Chemical Viscosity 62 Weight Pipe Length -- ft. I.D. -- in.

Weight 9.2 Water Loss 12.4 cc. Drill Pipe Length 3,340 ft. I.D. 3 1/2 in.

Chlorides 13,500 P.P.M. Test Tool Length 25 ft. Tool Size 3 1/2 - IF in.

Jars: Make Bowen Serial Number Not Run Anchor Length 27' perf. w/31' drill pipe Size 4 1/2 - FH in.

Did Well Flow? No Reversed Out No Surface Choke Size 1 in. Bottom Choke Size 5/8 in.

Main Hole Size 7 7/8 in. Tool Joint Size 4 1/2 - XH in.

Blow: 1st Open: Weak, 1/2 in., blow increasing to 2 ins. No blow back during shut-in.

2nd Open: No blow.

Recovered 60 ft. of gas in pipe

Recovered 3 ft. of clean oil = .014760 bbls. (Gravity: 38 @ 60°)

Recovered 60 ft. of heavy oil cut mud = .295200 bbls. (Grind out: 26%-oil; 74%-mud)

Recovered 63 ft. of TOTAL FLUID = .309960 bbls.

Recovered          ft. of         

Remarks Tool Sample Grind Out: 38%-oil; 62%-mud

Time Set Packer(s) 7:55 ~~AM~~ **PM** Time Started Off Bottom 10:40 ~~AM~~ **PM** Maximum Temperature 102°

Initial Hydrostatic Pressure          (A) 1665 P.S.I.

Initial Flow Period          Minutes 45 (B) 12 P.S.I. to (C) 29 P.S.I.

Initial Closed In Period          Minutes 45 (D) 228 P.S.I.

Final Flow Period          Minutes 30 (E) 33 P.S.I. to (F) 35 P.S.I.

Final Closed In Period          Minutes 45 (G) 82 P.S.I.

Final Hydrostatic Pressure          (H) 1659 P.S.I.

## GENERAL INFORMATION

### Client Information:

Company: L.D. DRILLING, INC.

Contact: L.D. DAVIS

Phone: Fax: e-mail:

### Site Information:

Contact: JAMES MUSGROVE

Phone: Fax: e-mail:

### Well Information:

Name: HALL 'F' #1-10

Operator: L.D. DRILLING, INC.

Location-Downhole: DST #4 ARBUCKLE 3,488' - 3,546'

Location-Surface: SEC 10-21S-13W STAFFORD, COUNTY

### Test Information:

Company: DIAMOND TESTING

Representative: ROGER D. FRIEDLY

Supervisor: JAMES MUSGROVE

Test Type: CONVENTIONAL

Job Number:

Test Unit: NO. 1

Start Date: 2007/06/28

Start Time: 18:07:00

End Date: 2007/06/29

End Time: 00:34:00

Report Date:

Prepared By:

### Remarks:

Qualified By:

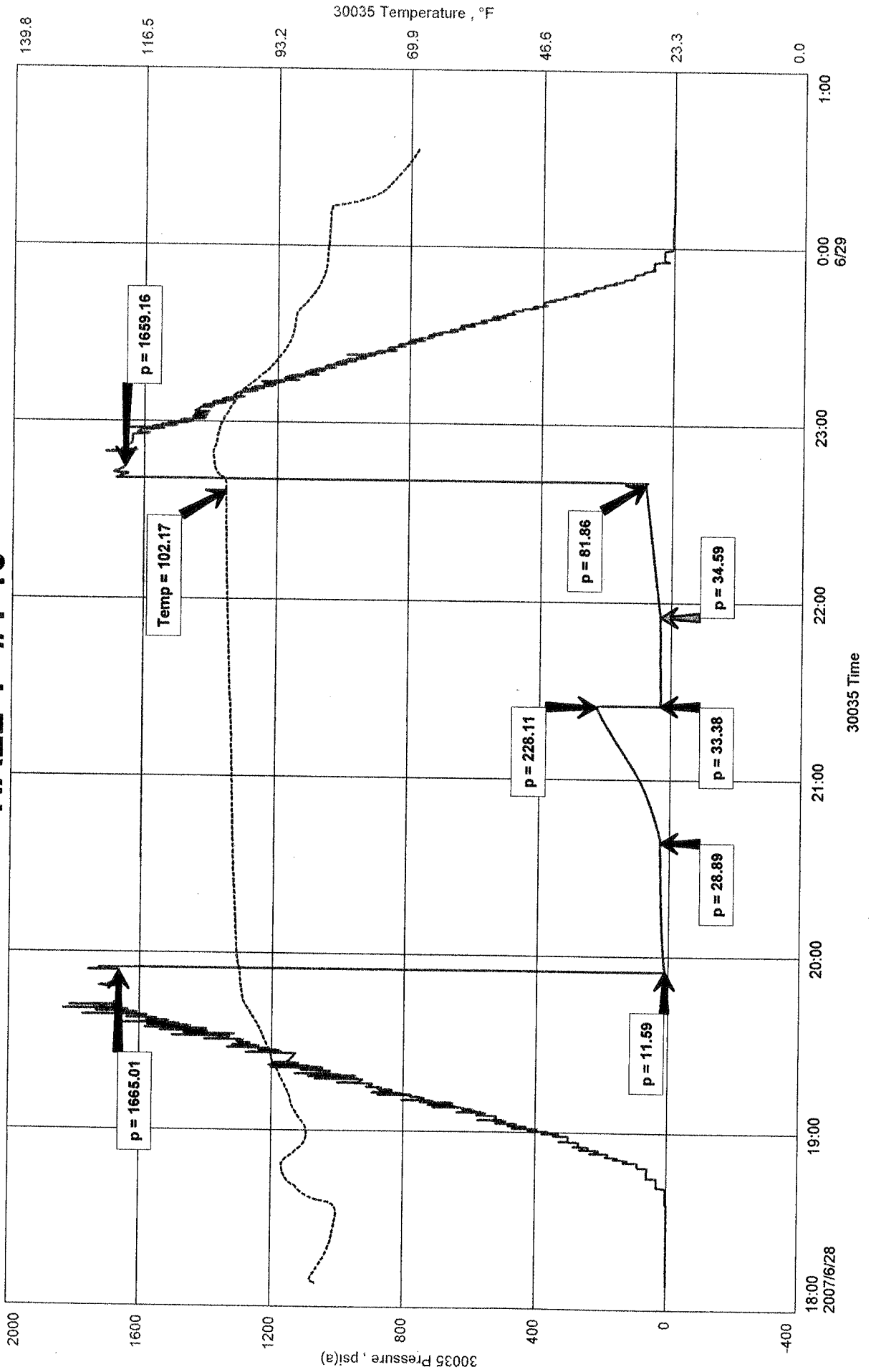
RECOVERED: 60' GAS IN PIPE  
3' CLEAN OIL 38 GRAVITY @ 60 deg.  
60' HOCM 26% OIL, 74% MUD  
63' TOTAL FLUID

TOOL SAMPLE: 38% OIL, 62% MUD

L.D. DRILLING, INC.  
 DST #4 ARBUCKLE 3,488' - 3,546'  
 Start Test Date: 2007/06/28  
 Final Test Date: 2007/06/29

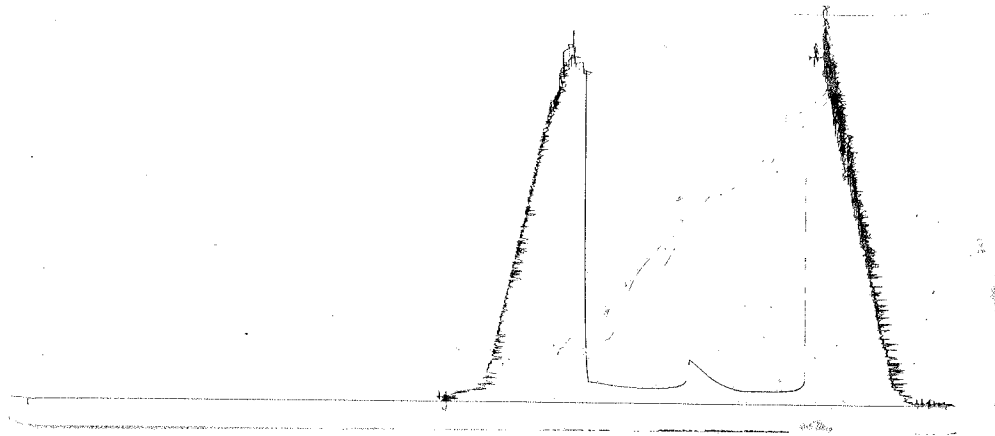
HALL 'F' #1-10  
 Formation: DST #4 ARBUCKLE 3,488' - 3,546'  
 Pool: WILDCAT

# HALL 'F' #1-10



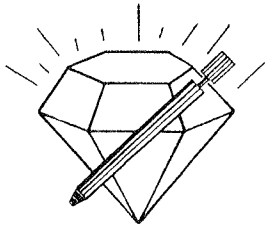
DST# 4 outside 13367  
ARB

3488-3546  
LOL 3543



This is an actual photograph of recorder chart.

POINT	PRESSURE		Elec. Office Reading	PSI
	Field Reading			
(A) Initial Hydrostatic Mud	1665	1665		PSI
(B) First Initial Flow Pressure	12	12		PSI
(C) First Final Flow Pressure	29	29		PSI
(D) Initial Closed-in Pressure	228	228		PSI
(E) Second Initial Flow Pressure	33	33		PSI
(F) Second Final Flow Pressure	35	35		PSI
(G) Final Closed-in Pressure	82	82		PSI
(H) Final Hydrostatic Mud	1659	1659		PSI



**DIAMOND TESTING**  
P.O. Box 157  
**HOISINGTON, KANSAS 67544**  
(620) 653-7550 • (800) 542-7313  
STC 30035.D 449

Company L. D. Drilling, Inc. Lease & Well No. Hall "F" No. 1-10  
Elevation 1879KB Formation Arbuckle Effective Pay -- Ft. Ticket No. 2332  
Date 6-29-07 Sec. 10 Twp. 21S Range 13W County Stafford State Kansas

Test Approved By James C. Musgrove Diamond Representative Roger D. Friedly

Formation Test No. 5 Interval Tested from 3,488 ft. to 3,560 ft. Total Depth 3,560 ft.

Packer Depth 3,483 ft. Size 6 3/4 in. Packer Depth -- ft. Size -- in.

Packer Depth 3,488 ft. Size 6 3/4 in. Packer Depth -- ft. Size -- in.

Depth of Selective Zone Set          ft.

Top Recorder Depth (Inside) 3,476 ft. Recorder Number 30035 Cap. 5,000 psi

Bottom Recorder Depth (Outside) 3,557 ft. Recorder Number 13387 Cap. 4,000 psi

Below Straddle Recorder Depth          ft. Recorder Number          Cap.          psi

Drilling Contractor Petromark Drilling, LLC - Rig 2 Drill Collar Length 123 ft. I.D. 2 1/4 in.

Mud Type Chemical Viscosity 55 Weight Pipe Length -- ft. I.D. -- in.

Weight 9.2 Water Loss 11.2 cc. Drill Pipe Length 3,340 ft. I.D. 3 1/2 in.

Chlorides 12,000 P.P.M. Test Tool Length 25 ft. Tool Size 3 1/2 - IF in.

Jars: Make Bowen Serial Number Not Run Anchor Length 72 ft. Size 4 1/2 - FH in.

Did Well Flow? No Reversed Out No Surface Choke Size 1 in. Bottom Choke Size 5/8 in.

Main Hole Size 7 7/8 in. Tool Joint Size 4 1/2 - XH in.

Blow: 1st Open: Weak, 1/2 in., blow increasing to 2 ins. No blow back during shut-in.

2nd Open: Weak, surface blow throughout in 20 mins. No blow back during shut-in.

Recovered 30 ft. of gas in pipe

Recovered 68 ft. of gas & oil cut mud = .334560 bbls. (Grind out: 5%-gas; 10%-oil; 85%-mud)

Recovered 68 ft. of TOTAL FLUID = .334560 bbls.

Recovered          ft. of         

Recovered          ft. of         

Remarks Tool Sample Grind Out: 16%-oil; 84%-mud

Time Set Packer(s) 9:09 ~~P.M.~~ A.M. Time Started Off Bottom 12:09 ~~P.M.~~ XXX Maximum Temperature 100°

Initial Hydrostatic Pressure          (A) 1657 P.S.I.

Initial Flow Period          Minutes 45 (B) 15 P.S.I. to (C) 31 P.S.I.

Initial Closed In Period          Minutes 45 (D) 384 P.S.I.

Final Flow Period          Minutes 45 (E) 40 P.S.I. to (F) 48 P.S.I.

Final Closed In Period          Minutes 45 (G) 313 P.S.I.

Final Hydrostatic Pressure          (H) 1654 P.S.I.

## GENERAL INFORMATION

### Client Information:

Company: L.D. DRILLING, INC.  
Contact: L.D. DAVIS  
Phone: Fax: e-mail:

### Site Information:

Contact: JAMES MUSGROVE  
Phone: Fax: e-mail:

### Well Information:

Name: HALL 'F' #1-10  
Operator: L.D DRILLING, INC.  
Location-Downhole: DST #5 ARBUCKLE 3,488' - 3,560'  
Location-Surface: SEC 10-21S-13W STAFFORD, COUNTY

### Test Information:

Company: DIAMOND TESTING  
Representative: ROGER D. FRIEDLY  
Supervisor: JAMES MUSGROVE  
Test Type: CONVENTIONAL Job Number:  
Test Unit: NO. 1  
Start Date: 2007/06/29 Start Time: 07:27:00  
End Date: 2007/06/29 End Time: 13:49:00  
Report Date: Prepared By:  
Qualified By:

### Remarks:

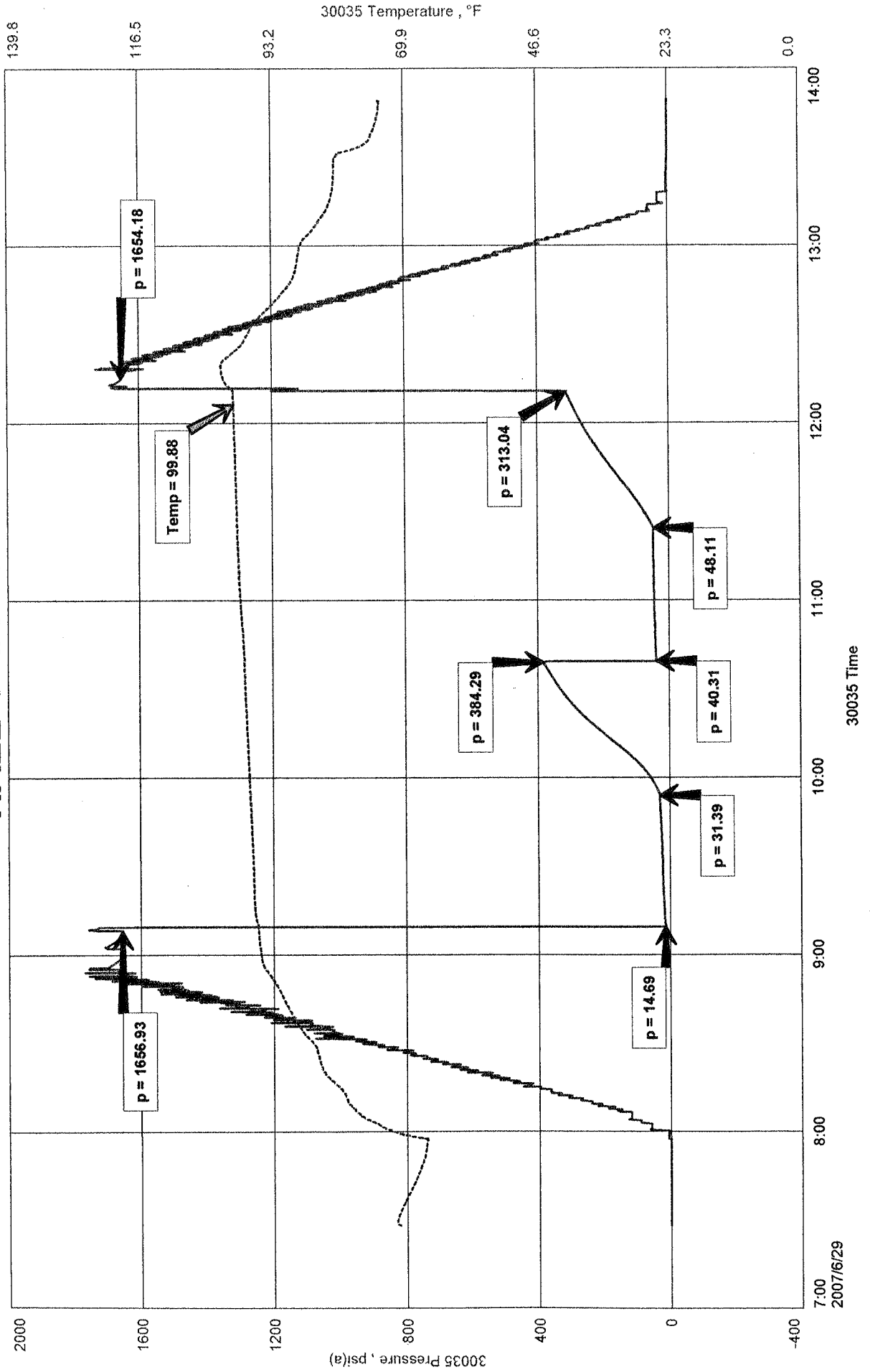
RECOVERED: 30' GAS IN PIPE  
68' G&OCM 5% GAS, 10% OIL, 85% MUD

TOOL SAMPLE: 16% OIL, 84% MUD

HALL 'F' #1-10  
 Formation: DST #5 ARBUCKLE 3,488' - 3,560'  
 Pool: WILDCAT

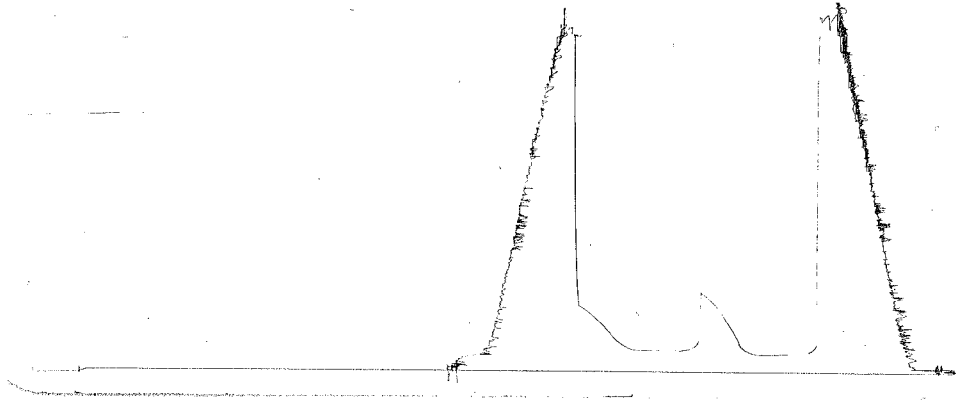
L.D. DRILLING, INC.  
 DST #5 ARBUCKLE 3,488' - 3,560'  
 Start Test Date: 2007/06/29  
 Final Test Date: 2007/06/29

# HALL 'F' #1-10



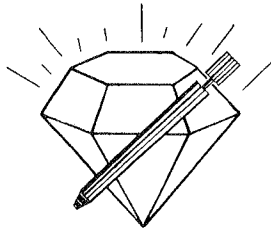
DST # 5 OUTSIDE 1058/  
ARB

5488-5260  
LWL 3557



This is an actual photograph of recorder chart.

POINT	PRESSURE		Elec. Office Reading	PSI
	Field Reading			
(A) Initial Hydrostatic Mud	1657	1657		PSI
(B) First Initial Flow Pressure	15	15		PSI
(C) First Final Flow Pressure	31	31		PSI
(D) Initial Closed-in Pressure	384	384		PSI
(E) Second Initial Flow Pressure	40	40		PSI
(F) Second Final Flow Pressure	48	48		PSI
(G) Final Closed-in Pressure	313	313		PSI
(H) Final Hydrostatic Mud	1654	1654		PSI



# DIAMOND TESTING

P.O. Box 157

HOISINGTON, KANSAS 67544

(620) 653-7550 • (800) 542-7313

STC 30035.D 450

Company L. D. Drilling, Inc. Lease & Well No. Hall "F" No. 1-10  
 Elevation 1879KB Formation Arbuckle Effective Pay -- Ft. Ticket No. 2333  
 Date 6-29-07 Sec. 10 Twp. 21S Range 13W County Stafford State Kansas

Test Approved By James C. Musgrove Diamond Representative Roger D. Friedly

Formation Test No. 6 Interval Tested from 3,554 ft. to 3,575 ft. Total Depth 3,575 ft.  
 Packer Depth 3,549 ft. Size 6 3/4 in. Packer Depth -- ft. Size -- in.  
 Packer Depth 3,554 ft. Size 6 3/4 in. Packer Depth -- ft. Size -- in.

Depth of Selective Zone Set          ft.

Top Recorder Depth (Inside) 3,542 ft. Recorder Number 30035 Cap. 5,000 psi  
 Bottom Recorder Depth (Outside) 3,572 ft. Recorder Number 13387 Cap. 4,000 psi  
 Below Straddle Recorder Depth          ft. Recorder Number          Cap.          psi

Drilling Contractor Petromark Drilling, LLC - Rig 2 Drill Collar Length 123 ft. I.D. 2 1/4 in.  
 Mud Type Chemical Viscosity 55 Weight Pipe Length -- ft. I.D. -- in.  
 Weight 9.2 Water Loss 11.2 cc. Drill Pipe Length 3,406 ft. I.D. 3 1/2 in.  
 Chlorides 12,000 P.P.M. Test Tool Length 25 ft. Tool Size 3 1/2 - IF in.  
 Jars: Make Bowen Serial Number Not Run Anchor Length 21 ft. Size 4 1/2 - FH in.  
 Did Well Flow? No Reversed Out No Surface Choke Size 1 in. Bottom Choke Size 5/8 in.  
 Main Hole Size 7 7/8 in. Tool Joint Size 4 1/2 - XH in.

Blow: 1st Open: Weak, 1/2 in., blow increasing. Off bottom of bucket in 18 mins. No blow back during shut-in.  
2nd Open: Weak, surface blow increasing. Off bottom of bucket in 22 mins. No blow back during shut-in.

Recovered 124 ft. of muddy water = 1.760800 bbls. (Grind out: 44%-mud; 56%-salt water with oil specks)  
 Recovered 316 ft. of salt water = 1.554720 bbls. (Grind out: 100%-water) Chlorides: 15,500 Ppm  
 Recovered 440 ft. of TOTAL FLUID = 3.315520 bbls.  
 Recovered          ft. of           
 Recovered          ft. of         

Remarks Tool Sample Grind Out: 100%-salt water with good oil

Time Set Packer(s) 8:59 <sup>XXM.</sup> P.M. Time Started Off Bottom 11:59 <sup>XXM.</sup> P.M. Maximum Temperature 110°  
 Initial Hydrostatic Pressure          (A) 1696 P.S.I.  
 Initial Flow Period          Minutes 45 (B) 16 P.S.I. to (C) 144 P.S.I.  
 Initial Closed In Period          Minutes 45 (D) 1135 P.S.I.  
 Final Flow Period          Minutes 45 (E) 149 P.S.I. to (F) 233 P.S.I.  
 Final Closed In Period          Minutes 45 (G) 1115 P.S.I.  
 Final Hydrostatic Pressure          (H) 1695 P.S.I.

## GENERAL INFORMATION

### Client Information:

Company: L.D. DRILLING, INC.

Contact: L.D. DAVIS

Phone: Fax: e-mail:

### Site Information:

Contact: JAMES MUSGROVE

Phone: Fax: e-mail:

### Well Information:

Name: HALL 'F' #1-10

Operator: L.D. DRILLING, INC.

Location-Downhole: DST #6 ARBUCKLE 3,554' - 3,575'

Location-Surface: SEC 10-21S-13W STAFFORD COUNTY

### Test Information:

Company: DIAMOND TESTING

Representative: ROGER D. FRIEDLY

Supervisor: JAMES MUSGROVE

Test Type: VONVENTIONAL Job Number:

Test Unit: NO. 1

Start Date: 2007/06/29 Start Time: 19:05:00

End Date: 2007/06/30 End Time: 01:49:00

Report Date: Prepared By:

Qualified By:

### Remarks:

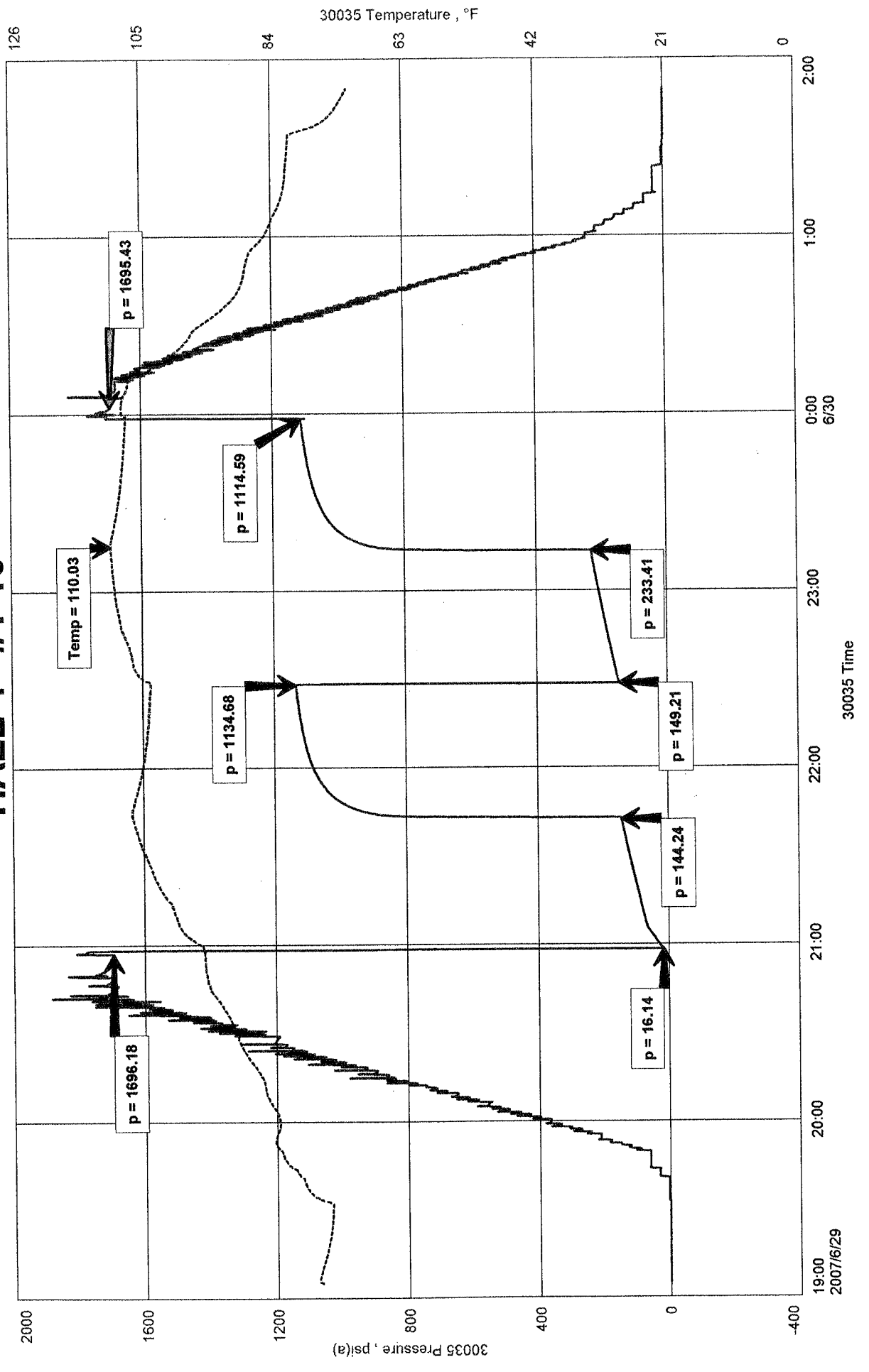
RECOVERED: 124' MW 44% MUD, 56% WTR - WITH OIL SPECKS  
316' SW 100% WTR  
440' TOTAL FLUID

TOOL SAMPLE: 100% SW WITH GOOD OIL SPOTS

HALL 'F' #1-10  
 Formation: DST #6 ARBUCKLE 3,554' - 3,575'  
 Pool: WILDCAT

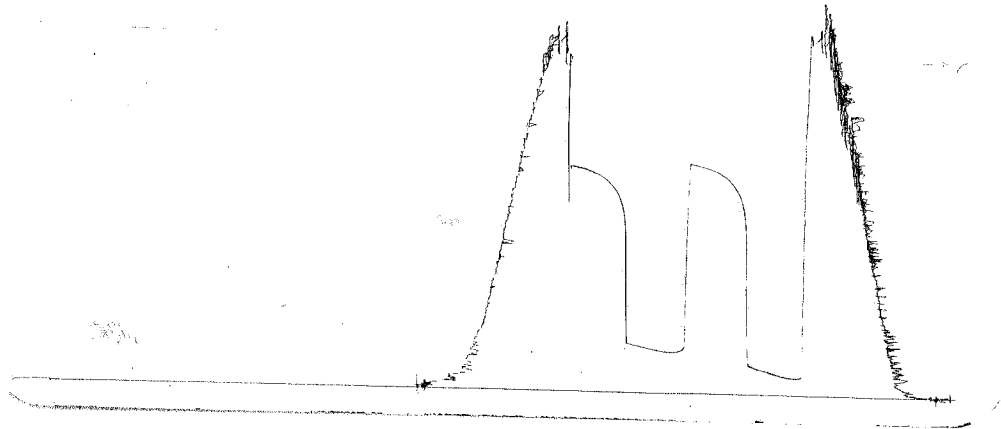
L.D. DRILLING, INC.  
 DST #6 ARBUCKLE 3,554' - 3,575'  
 Start Test Date: 2007/06/29  
 Final Test Date: 2007/06/30

# HALL 'F' #1-10



DST # 6 outside 13387  
 A.R.B.

3554-3575  
 Loc 3572



This is an actual photograph of recorder chart.

POINT	PRESSURE		Elec. Office Reading	PSI
	Field Reading			
(A) Initial Hydrostatic Mud	1696	1696		PSI
(B) First Initial Flow Pressure	16	16		PSI
(C) First Final Flow Pressure	144	144		PSI
(D) Initial Closed-in Pressure	1135	1135		PSI
(E) Second Initial Flow Pressure	149	149		PSI
(F) Second Final Flow Pressure	233	233		PSI
(G) Final Closed-in Pressure	1115	1115		PSI
(H) Final Hydrostatic Mud	1695	1695		PSI