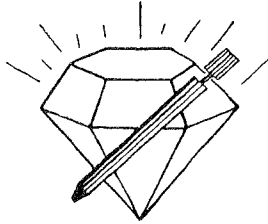


15-185-23539

28-215-13w



DIAMOND TESTING

P.O. Box 157
HOISINGTON, KANSAS 67544
(620) 653-7550 • (800) 542-7313
STC 21108.D468

Company Globe Operating, Inc. Lease & Well No. Hufford No. 2

Elevation 1912 KB Formation Arbuckle Effective Pay -- Ft. Ticket No. J2271

Date 8-02-08 Sec. 28 Twp. 21S Range 13W County Stafford State Kansas

Test Approved By Eldon J. Schierling Diamond Representative John C. Riedl

Formation Test No. 1 Interval Tested from 3,716 ft. to 3,726 ft. Total Depth 3,726 ft.

Packer Depth 3,711 ft. Size 6 3/4 in. Packer Depth -- ft. Size -- in.

Packer Depth 3,716 ft. Size 6 3/4 in. Packer Depth -- ft. Size -- in.

Depth of Selective Zone Set ft.

Top Recorder Depth (Inside) 3,719 ft. Recorder Number 21108 Cap. 5,000 psi

Bottom Recorder Depth (Outside) 3,723 ft. Recorder Number 11017 Cap. 4,000 psi

Below Straddle Recorder Depth ft. Recorder Number Cap. psi

Drilling Contractor Petromark Drilling, Inc. - Rig 2 Drill Collar Length 120 ft. I.D. 2 1/4 in.

Mud Type Chemical Viscosity 50 Weight Pipe Length -- ft. I.D. -- in.

Weight 9.4 Water Loss 12.0 cc. Drill Pipe Length 3,576 ft. I.D. 3 1/2 in.

Chlorides 7,300 P.P.M. Test Tool Length 20 ft. Tool Size 3 1/2 - IF in.

Jars: Make Sterling Serial Number Not Run Anchor Length 10 ft. Size 4 1/2 - FH in.

Did Well Flow? No Reversed Out No Surface Choke Size 1 in. Bottom Choke Size 5/8 in.

Main Hole Size 7 7/8 in. Tool Joint Size 4 1/2 - XH in.

Blow: 1st Open: Weak blow; slowly building to 3 ins. No blow back during shut-in.

2nd Open: Weak blow; slowly building to 1/2 in. No blow back during shut-in.

Recovered 120 ft. of gas in pipe

Recovered 70 ft. of slightly mud cut gassy oil = .344400 bbls. (Grind out: 10%-mud; 15%-gas; 75%-oil)

Recovered 70 ft. of TOTAL FLUID = .344400 bbls.

Recovered ft. of

Recovered ft. of

Remarks

Time Set Packer(s) 9:30 AM P.M. Time Started Off Bottom 11:30 AM P.M. Maximum Temperature 110°

Initial Hydrostatic Pressure (A) 1848 P.S.I.

Initial Flow Period Minutes 30 (B) 27 P.S.I. to (C) 48 P.S.I.

Initial Closed In Period Minutes 45 (D) 824 P.S.I.

Final Flow Period Minutes 15 (E) 40 P.S.I. to (F) 44 P.S.I.

Final Closed In Period Minutes 30 (G) 653 P.S.I.

Final Hydrostatic Pressure (H) 1805 P.S.I.

GENERAL INFORMATION

Client Information:

Company: GLOBE OPERATING INC
Contact: RICHARD STALCUP
Phone: Fax: e-mail:

Site Information:

Contact: ELDON SCHIERLING
Phone: Fax: e-mail:

Well Information:

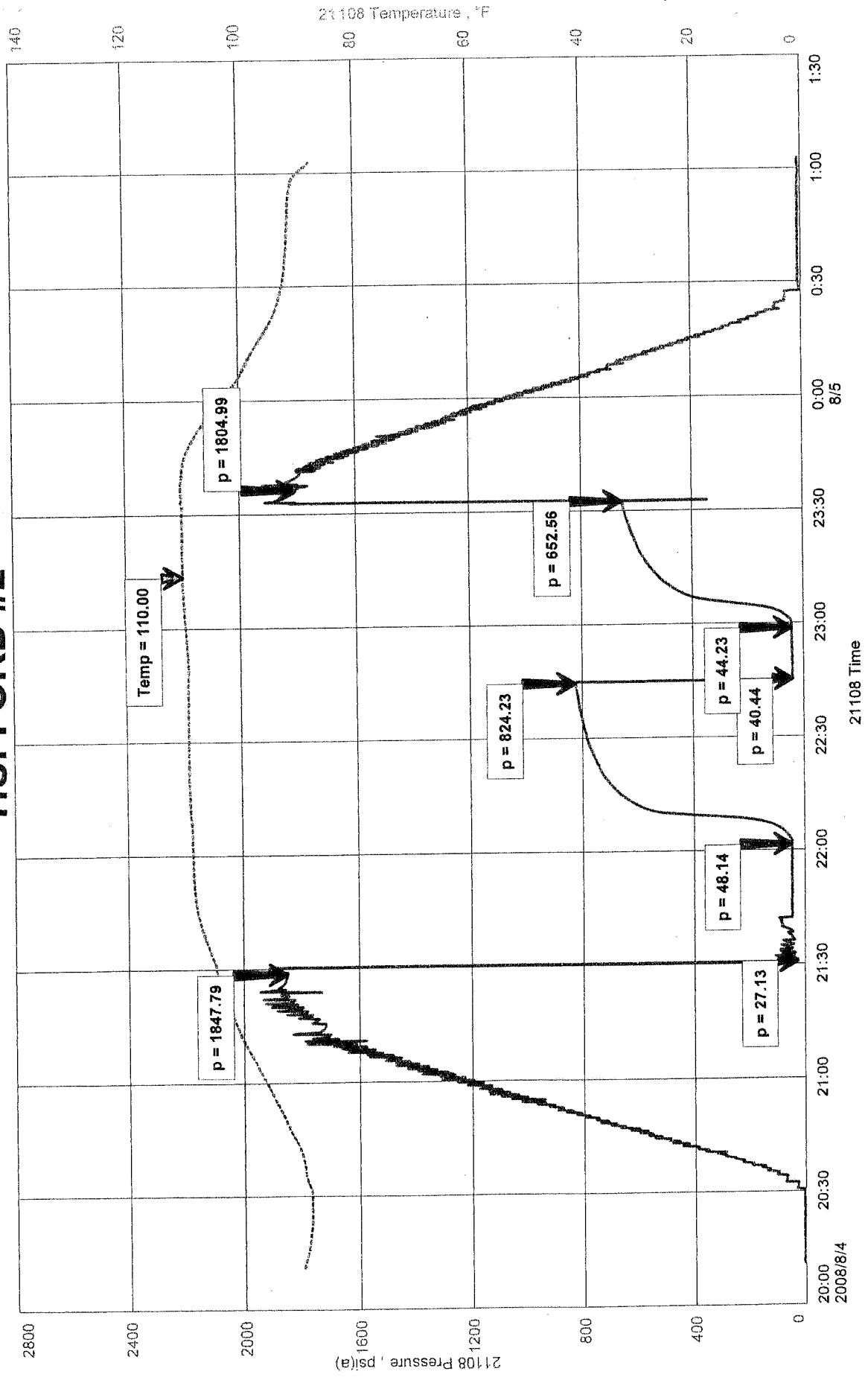
Name: HUFFORD #2
Operator: GLOBE OPERATING INC
Location-Downhole: DST #1 3716 TO 3726
Location-Surface: S21/21S/13W STAFFORD COUNTY

Test Information:

Company: DIAMOND TESTING
Representative: JOHN RIEDL
Supervisor: ELDON SCHIERLING
Test Type: CONVENTIONAL Job Number: D468
Test Unit: 2
Start Date: 2008/08/04 Start Time: 20:10:00
End Date: 2008/08/05 End Time: 01:00:00
Report Date: 2008/08/05 Prepared By: JOHN RIEDL
Remarks: Qualified By: ELDON SCHIERLING

RECOVERY: 120' GAS IN PIPE
70' SLIGHTLY MUD CUT GASSY OIL

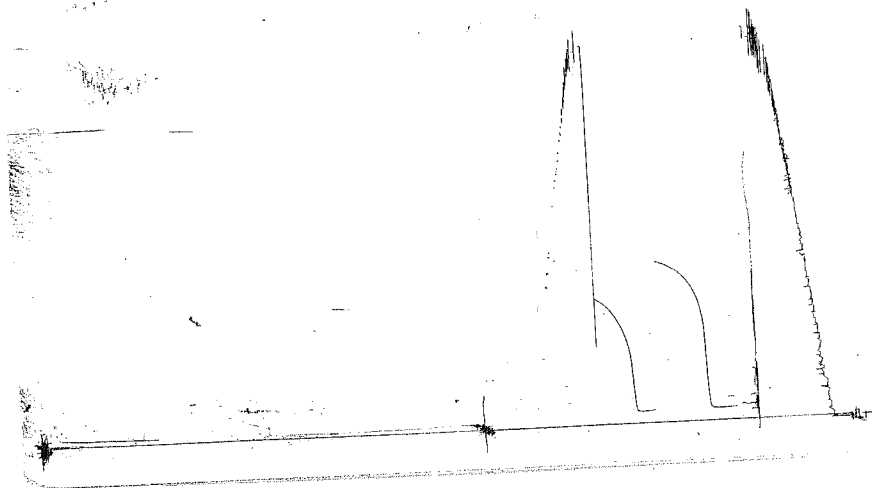
HUFFORD #2



GLOBE OR
HOFFORD #2

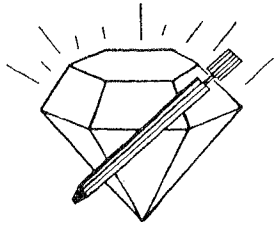
DST #1

RUC 11017
003312



This is an actual photograph of recorder chart.

POINT	PRESSURE		Elec. Office Reading	PSI
	Field Reading			
(A) Initial Hydrostatic Mud	1848	1848		PSI
(B) First Initial Flow Pressure.....	27	27		PSI
(C) First Final Flow Pressure	48	48		PSI
(D) Initial Closed-in Pressure	824	824		PSI
(E) Second Initial Flow Pressure.....	40	40		PSI
(F) Second Final Flow Pressure.....	44	44		PSI
(G) Final Closed-in Pressure	653	653		PSI
(H) Final Hydrostatic Mud	1805	1805		PSI



DIAMOND TESTING

P.O. Box 157
HOISINGTON, KANSAS 67544
(620) 653-7550 • (800) 542-7313
STC 21108.D469

Company Globe Operating, Inc. Lease & Well No. Hufford No. 2
 Elevation 1912 KB Formation Arbuckle Effective Pay -- Ft. Ticket No. J2272
 Date 8-05-08 Sec. 28 Twp. 21S Range 13W County Stafford State Kansas
 Test Approved By Eldon J. Schierling Diamond Representative John C. Riedl
 Formation Test No. 2 Interval Tested from 3,719 ft. to 3,738 ft. Total Depth 3,738 ft.
 Packer Depth 3,714 ft. Size 6 3/4 in. Packer Depth -- ft. Size -- in.
 Packer Depth 3,719 ft. Size 6 3/4 in. Packer Depth -- ft. Size -- in.
 Depth of Selective Zone Set ft.

Top Recorder Depth (Inside) 3,722 ft. Recorder Number 21108 Cap. 5,000 psi
 Bottom Recorder Depth (Outside) 3,735 ft. Recorder Number 11017 Cap. 4,000 psi
 Below Straddle Recorder Depth ft. Recorder Number psi

Drilling Contractor Petromark Drilling, Inc. - Rig 2 Drill Collar Length 120 ft. I.D. 2 1/4 in.
 Mud Type Chemical Viscosity 50 Weight Pipe Length -- ft. I.D. -- in.
 Weight 9.4 Water Loss 12.0 cc. Drill Pipe Length 3,579 ft. I.D. 3 1/2 in.
 Chlorides 7,300 P.P.M. Test Tool Length 20 ft. Tool Size 3 1/2 - IF in.
 Jars: Make Sterling Serial Number Not Run Anchor Length 19 ft. Size 4 1/2 - FH in.
 Did Well Flow? No Reversed Out No Surface Choke Size 1 in. Bottom Choke Size 5/8 in.
 Main Hole Size 7 7/8 in. Tool Joint Size 4 1/2 - XH in.

Blow: 1st Open: Good blow; slowly building throughout to 6 ins. Very weak blow back during shut-in.
2nd Open: Good blow; slowly building throughout to 6 ins. Weak blow back during shut-in.

Recovered 80 ft. of gas in pipe
 Recovered 15 ft. of clean gassy oil = .193200 bbls. (Grind out: 10%-gas; 90%-oil) Gravity: 36 @ 60°
 Recovered 30 ft. of watery mud = .386400 bbls. (Grind out: 25%-water; 75%-mud)
 Recovered 120 ft. of water = .590400 bbls. (Chlorides: 19,000 Ppm)
 Recovered 165 ft. of TOTAL FLUID = 1.170000 bbls.
 Remarks PSI Readings from manual recorder

Time Set Packer(s)	<u>7:30</u>	<u>A.M.</u> P.M.	Time Started Off Bottom	<u>10:00</u>	<u>A.M.</u> P.M.	Maximum Temperature	<u>--</u>
Initial Hydrostatic Pressure			(A)	<u>1872</u>	P.S.I.		
Initial Flow Period	Minutes	<u>30</u>	(B)	<u>72</u>	P.S.I. to (C)	<u>87</u>	P.S.I.
Initial Closed In Period	Minutes	<u>45</u>	(D)	<u>986</u>	P.S.I.		
Final Flow Period	Minutes	<u>30</u>	(E)	<u>94</u>	P.S.I. to (F)	<u>109</u>	P.S.I.
Final Closed In Period	Minutes	<u>45</u>	(G)	<u>906</u>	P.S.I.		
Final Hydrostatic Pressure			(H)	<u>1843</u>	P.S.I.		

GENERAL INFORMATION

Client Information:

Company: 2
Contact: RICHARD STALCUP
Phone: Fax: e-mail:

Site Information:

Contact: ELDON SCHIERLING
Phone: Fax: e-mail:

Well Information:

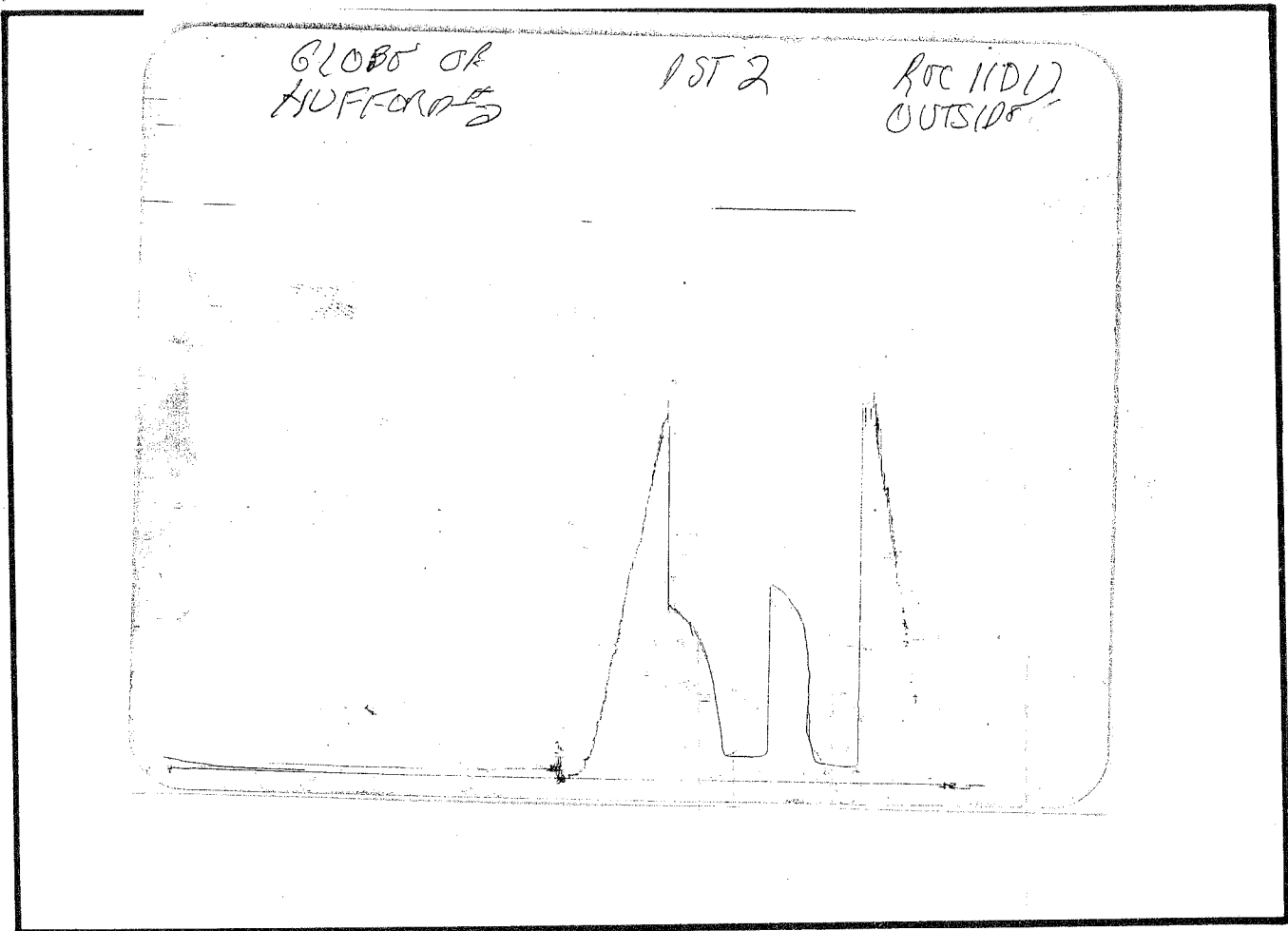
Name: HUFFORD #2
Operator: GLOBE OPERATING INC
Location-Downhole: DST #2 3719 TO 3738
Location-Surface: S21/21S/13W STAFFORD COUNTY

Test Information:

Company: DIAMOND TESTING
Representative: JOHN RIEDL
Supervisor: ELDON SCHIERLING
Test Type: CONVENTIONAL Job Number: D468
Test Unit: 2
Start Date: 2008/08/05 Start Time: 06:00:00
End Date: 2008/08/05 End Time: 11:45:00
Report Date: 2008/08/05 Prepared By: JOHN RIEDL
Qualified By: ELDON SCHIERLING

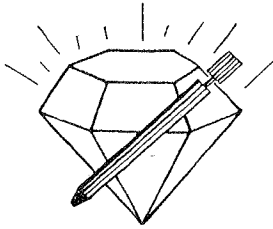
Remarks:

RECOVERY: 80' GAS IN PIPE
15' CLEAN GASSY OIL
30' WATERY MUD
120' WATER
70' SLIGHTLY MUD CUT GASSY OIL



This is an actual photograph of recorder chart.

POINT	PRESSURE		
	Field Reading	Manual Office Reading	
(A) Initial Hydrostatic Mud	1872	1872	PSI
(B) First Initial Flow Pressure	72	72	PSI
(C) First Final Flow Pressure	87	87	PSI
(D) Initial Closed-in Pressure	986	986	PSI
(E) Second Initial Flow Pressure	94	94	PSI
(F) Second Final Flow Pressure	109	109	PSI
(G) Final Closed-in Pressure	906	906	PSI
(H) Final Hydrostatic Mud	1843	1843	PSI



DIAMOND TESTING

P.O. Box 157
HOISINGTON, KANSAS 67544
(620) 653-7550 • (800) 542-7313
STC 21108.D470

Company Globe Operating, Inc. Lease & Well No. Hufford No. 2

Elevation 1912 KB Formation Arbuckle Effective Pay -- Ft. Ticket No. J2273

Date 8-05-08 Sec. 28 Twp. 21S Range 13W County Stafford State Kansas

Test Approved By Eldon J. Schierling Diamond Representative John C. Riedl

Formation Test No. 3 Interval Tested from 3,738 ft. to 3,748 ft. Total Depth 3,748 ft.

Packer Depth 3,733 ft. Size 6 3/4 in. Packer Depth -- ft. Size -- in.

Packer Depth 3,738 ft. Size 6 3/4 in. Packer Depth -- ft. Size -- in.

Depth of Selective Zone Set ft.

Top Recorder Depth (Inside) 3,741 ft. Recorder Number 21108 Cap. 5,000 psi

Bottom Recorder Depth (Outside) 3,747 ft. Recorder Number 11017 Cap. 4,000 psi

Below Straddle Recorder Depth ft. Recorder Number Cap. psi

Drilling Contractor Petromark Drilling, Inc. - Rig 2 Drill Collar Length 120 ft. I.D. 2 1/4 in.

Mud Type Chemical Viscosity 50 Weight Pipe Length -- ft. I.D. -- in.

Weight 9.2 Water Loss 14.0 cc. Drill Pipe Length 3,598 ft. I.D. 3 1/2 in.

Chlorides 15,000 P.P.M. Test Tool Length 20 ft. Tool Size 3 1/2 - IF in.

Jars: Make Sterling Serial Number Not Run Anchor Length 10 ft. Size 4 1/2 - FH in.

Did Well Flow? No Reversed Out No Surface Choke Size 1 in. Bottom Choke Size 5/8 in.

Main Hole Size 7 7/8 in. Tool Joint Size 4 1/2 - XH in.

Blow: 1st Open: Strong, 12 in., blow. Off bottom of bucket in 24 mins. No blow back during shut-in.
2nd Open: Strong blow; building to 9 ins. No blow back during shut-in.

Recovered 400 ft. of water = 4.196800 bbls. (Chlorides: 18,000 Ppm)

Recovered ft. of

Recovered ft. of

Recovered ft. of

Recovered ft. of

Remarks

Time Set Packer(s) 6:40 ^{XXX.} P.M. Time Started Off Bottom 8:40 ^{XXX.} P.M. Maximum Temperature 105°

Initial Hydrostatic Pressure (A) 1886 P.S.I.

Initial Flow Period Minutes 30 (B) 25 P.S.I. to (C) 108 P.S.I.

Initial Closed In Period Minutes 30 (D) 1270 P.S.I.

Final Flow Period Minutes 30 (E) 112 P.S.I. to (F) 160 P.S.I.

Final Closed In Period Minutes 30 (G) 1267 P.S.I.

Final Hydrostatic Pressure (H) 1813 P.S.I.

GENERAL INFORMATION

Client Information:

Company: GLOBE OPERATING INC
Contact: RICHARD STALCUP
Phone: Fax: e-mail:

Site Information:

Contact: ELDON SCHIERLING
Phone: Fax: e-mail:

Well Information:

Name: HUFFORD #2
Operator: GLOBE OPERATING INC
Location-Downhole: DST#3 3738 TO 3748
Location-Surface: S21/21S/13W STAFFORD COUNTY

Test Information:

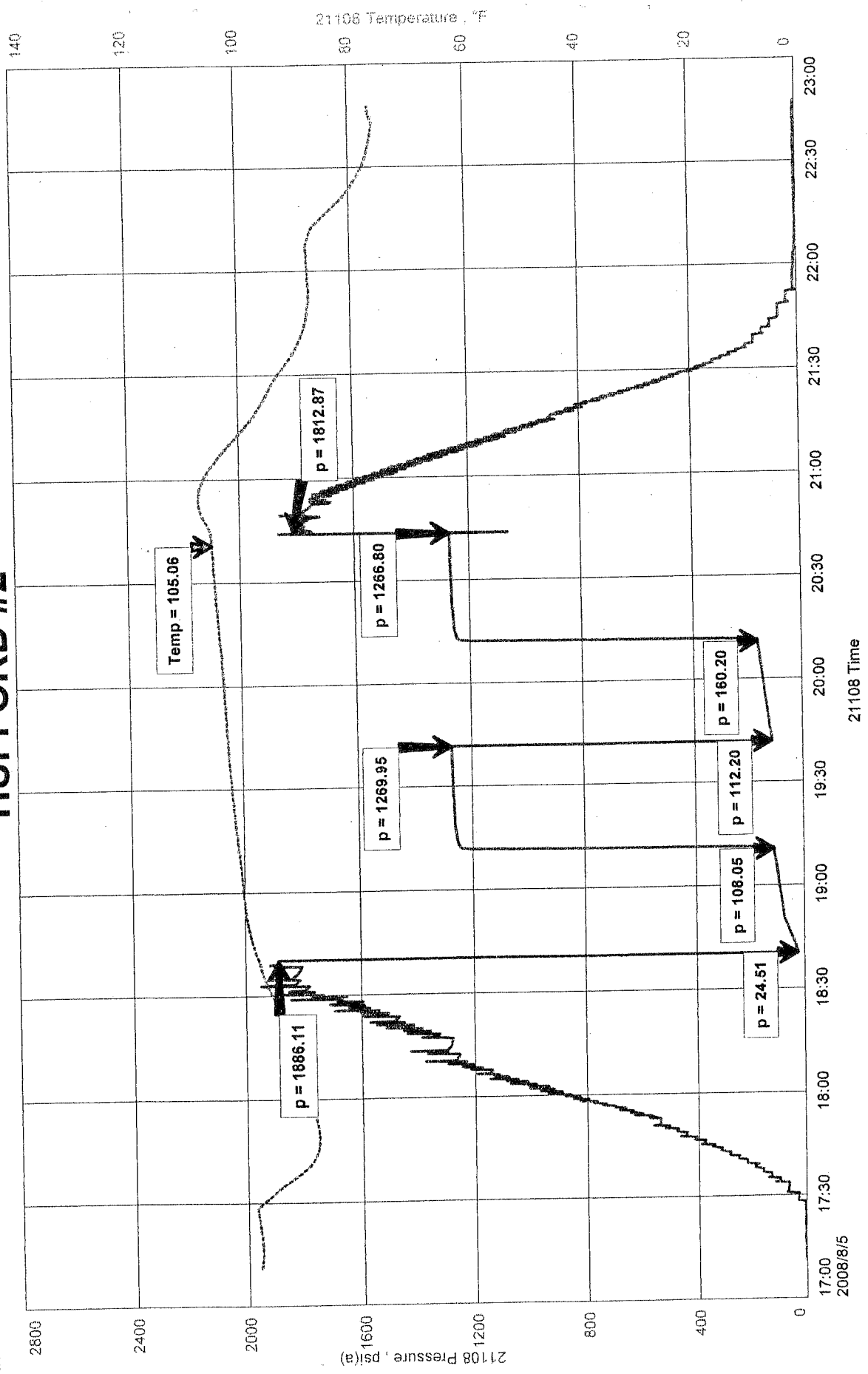
Company: DIAMOND TESTING
Representative: JOHN RIEDL
Supervisor: ELDON SCHIERLING
Test Type: CONVENTIONAL Job Number: D470
Test Unit: 2
Start Date: 2008/08/05 Start Time: 17:10:00
End Date: 2008/08/05 End Time: 22:40:00
Report Date: 2008/08/05 Prepared By: ELDON SCHIERLING
Remarks: Qualified By:

RECOVERY:400' WATER

GLOBE OPERATING INC
DST#3 3738 TO 3748
Start Test Date: 2008/08/05
Final Test Date: 2008/08/05

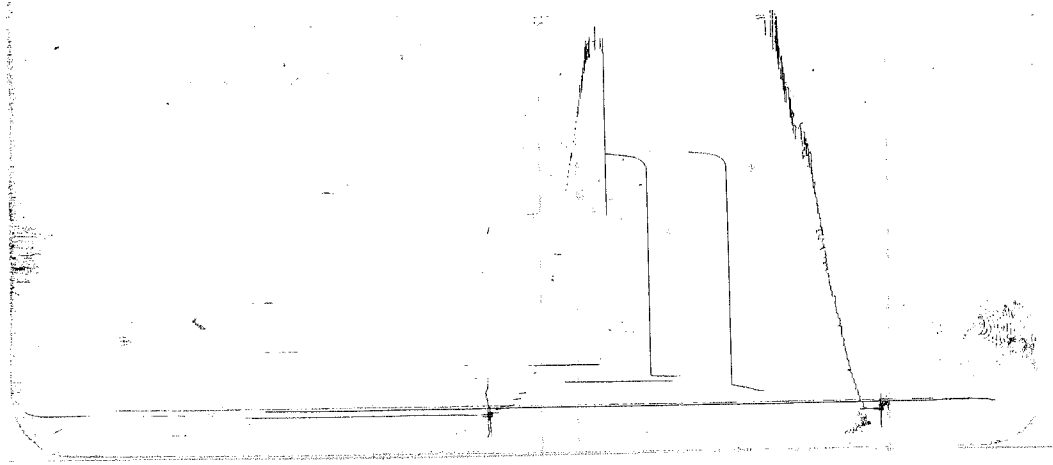
FORMATION: ARBUCKLE
Job Number: D470

HUFFORD #2



BLOTT OPER DST #3
 HOFFORD #2

ROELL 017
 OUTSIDE



This is an actual photograph of recorder chart.

POINT	PRESSURE		PSI
	Field Reading	Elec. Office Reading	
(A) Initial Hydrostatic Mud	1886	1886	PSI
(B) First Initial Flow Pressure	25	25	PSI
(C) First Final Flow Pressure	108	108	PSI
(D) Initial Closed-in Pressure	1270	1270	PSI
(E) Second Initial Flow Pressure	112	112	PSI
(F) Second Final Flow Pressure	160	160	PSI
(G) Final Closed-in Pressure	1267	1267	PSI
(H) Final Hydrostatic Mud	1813	1813	PSI