



15-185-23438

14-215-13w

DIAMOND TESTING

P.O. Box 157

HOISINGTON, KANSAS 67544

(620) 653-7550 • (800) 542-7313

STC 21098.D 409

Company L. D. Drilling, Inc. Lease & Well No. Hall "G" No. 1-14

Elevation 1868KB Formation Lansing/Kansas City "A" - "B" Effective Pay -- Ft. Ticket No. 2291

Date 4-21-07 Sec. 14 Twp. 21S Range 13W County Stafford State Kansas

Test Approved By Kim Shoemaker Diamond Representative Roger D. Friedly

Formation Test No. 1 Interval Tested from 3,269 ft. to 3,318 ft. Total Depth 3,318 ft.

Packer Depth 3,264 ft. Size 6 3/4 in. Packer Depth -- ft. Size -- in.

Packer Depth 3,269 ft. Size 6 3/4 in. Packer Depth -- ft. Size -- in.

Depth of Selective Zone Set -- ft.

Top Recorder Depth (Inside) 3,257 ft. Recorder Number 21098 Cap. 5,000 psi

Bottom Recorder Depth (Outside) 3,315 ft. Recorder Number 13387 Cap. 4,000 psi

Below Straddle Recorder Depth -- ft. Recorder Number -- Cap. -- psi

Drilling Contractor Petromark Drilling, LLC - Rig 2 Drill Collar Length 123 ft. I.D. 2 1/4 in.

Mud Type Chemical Viscosity 59 Weight Pipe Length -- ft. I.D. -- in.

Weight 9.1 Water Loss 12.0 cc. Drill Pipe Length 3,121 ft. I.D. 3 1/2 in.

Chlorides 10,000 P.P.M. Test Tool Length 25 ft. Tool Size 3 1/2 - IF in.

Jars: Make Bowen Serial Number Not Run Anchor Length 49 ft. Size 4 1/2 - FH in.

Did Well Flow? No Reversed Out No Surface Choke Size 1 in. Bottom Choke Size 5/8 in.

Main Hole Size 7 7/8 in. Tool Joint Size 4 1/2 - XH in.

Blow: 1st Open: Weak, 1/2 in., blow increasing to 4 ins. No blow back during shut-in.

2nd Open: Weak, 1/2 in., blow increasing to 3 ins. No blow back during shut-in.

Recovered 60 ft. of gas in pipe

Recovered 61 ft. of slightly oil specked drilling mud = .300120 bbls.

Recovered 61 ft. of TOTAL FLUID = .300120 bbls.

Recovered -- ft. of --

Recovered -- ft. of --

Remarks Tool Sample Grind Out: 2%-oil; 98%-mud

Time Set Packer(s) 5:04 P.M. Time Started Off Bottom 7:04 P.M. Maximum Temperature 97°

Initial Hydrostatic Pressure (A) 1547 P.S.I.

Initial Flow Period Minutes 30 (B) 9 P.S.I. to (C) 25 P.S.I.

Initial Closed In Period Minutes 30 (D) 74 P.S.I.

Final Flow Period Minutes 30 (E) 25 P.S.I. to (F) 37 P.S.I.

Final Closed In Period Minutes 30 (G) 66 P.S.I.

Final Hydrostatic Pressure (H) 1535 P.S.I.

## GENERAL INFORMATION

### Client Information:

Company: L.D. DRILLING, INC.

Contact: L.D. DAVIS

Phone: Fax: e-mail:

### Site Information:

Contact: KIM SHOEMAKER

Phone: Fax: e-mail:

### Well Information:

Name: HALL 'G' #1-14

Operator: L.D. DRILLING, INC.

Location-Downhole: DST #1 LKC 'A-B' 3,269' - 3,318'

Location-Surface: SEC 14-21S-13W STAFFORD COUNTY

### Test Information:

Company: DIAMOND TESTING

Representative: ROGER D. FRIEDLY

Supervisor: KIM SHOEMAKER

Test Type: CONVENTIONAL Job Number:

Test Unit: NO. 1

Start Date: 2007/04/21 Start Time: 14:50:00

End Date: 2007/04/21 End Time: 20:51:00

Report Date: Prepared By:

Remarks: Qualified By:

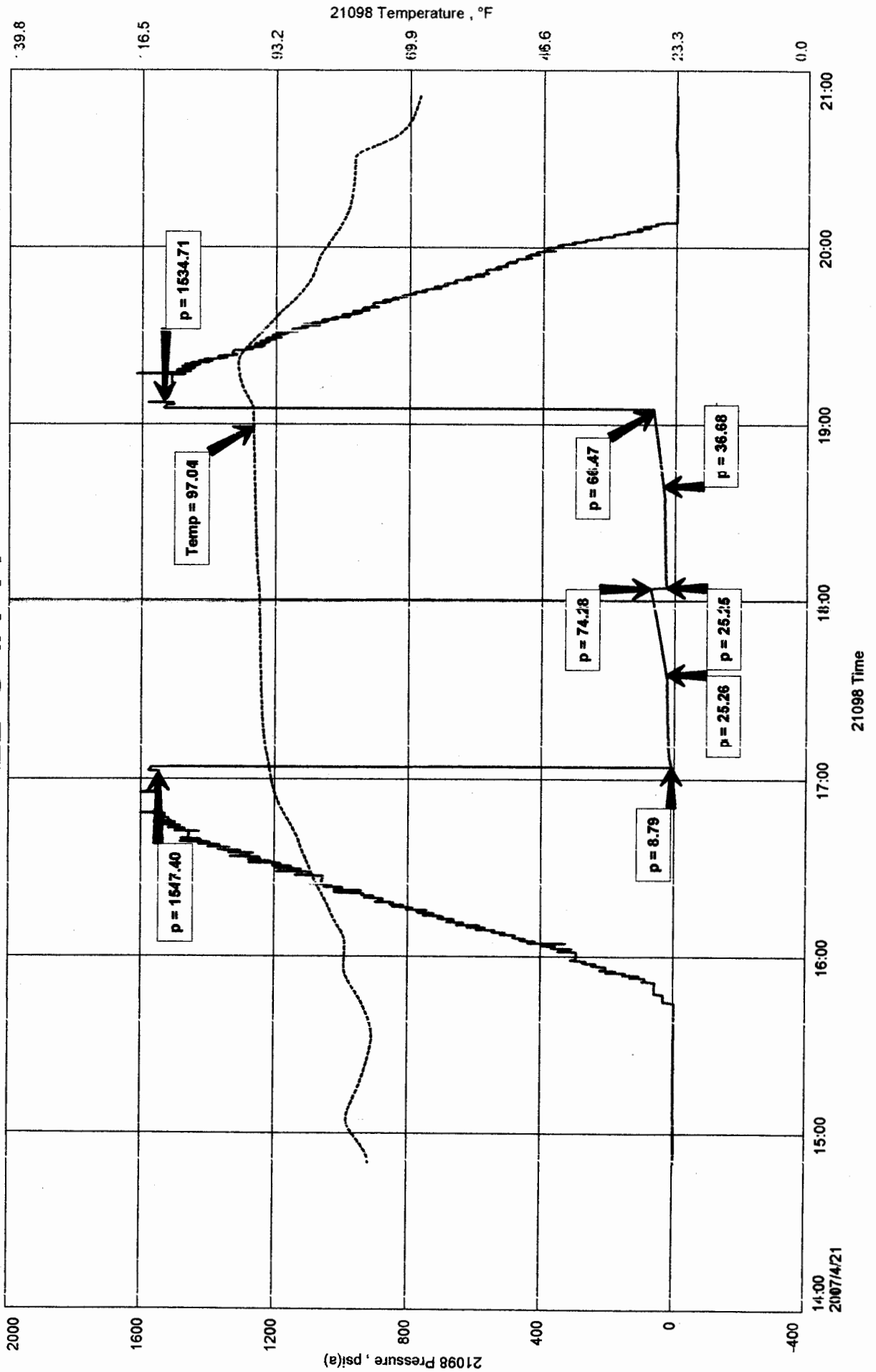
RECOVERED: 60' GAS IN PIPE  
61' SLIGHTLY OIL SPECKED DRILLING MUD

TOOL SAMPLE: 2% OIL, 98% MUD

L.D. DRILLING, INC.  
DST #1 LKC 'A-B' 3,269' - 3,318'  
Start Test Date: 2007/04/21  
Final Test Date: 2007/04/21

HALL 'G' #1-14  
Formation: DST #1 LKC 'A-B' 3,269' - 3,318'  
Pool: WILDCAT

# HALL 'G' #1-14

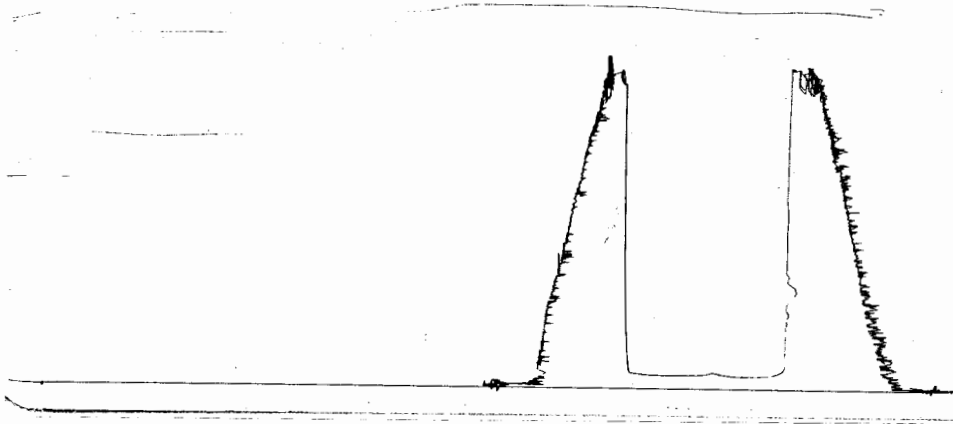


DST #1 outside 13387

LKC A-B

3269-3318

LOL 3315



This is an actual photograph of recorder chart.

POINT	PRESSURE Elec.		
	Field Reading	Office Reading	
(A) Initial Hydrostatic Mud	1547	1547	PSI
(B) First Initial Flow Pressure	9	9	PSI
(C) First Final Flow Pressure	25	25	PSI
(D) Initial Closed-in Pressure	74	74	PSI
(E) Second Initial Flow Pressure	25	25	PSI
(F) Second Final Flow Pressure	37	37	PSI
(G) Final Closed-in Pressure	66	66	PSI
(H) Final Hydrostatic Mud	1535	1535	PSI



# DIAMOND TESTING

P.O. Box 157  
HOISINGTON, KANSAS 67544  
(620) 653-7550 • (800) 542-7313  
STC 21098.D 410

Company L. D. Drilling, Inc. Lease & Well No. Hall "G" No. 1-14  
Elevation 1868KB Formation Lansing/Kansas City "D-F" Effective Pay -- Ft. Ticket No. 2292  
Date 4-22-07 Sec. 14 Twp. 21S Range 13W County Stafford State Kansas

Test Approved By Kim Shoemaker Diamond Representative Roger D. Friedly

Formation Test No. 2 Interval Tested from 3,307 ft. to 3,357 ft. Total Depth 3,357 ft.

Packer Depth 3,302 ft. Size 6 3/4 in. Packer Depth -- ft. Size -- in.

Packer Depth 3,307 ft. Size 6 3/4 in. Packer Depth -- ft. Size -- in.

Depth of Selective Zone Set          ft.

Top Recorder Depth (Inside) 3,295 ft. Recorder Number 21098 Cap. 5,000 psi

Bottom Recorder Depth (Outside) 3,354 ft. Recorder Number 13387 Cap. 4,000 psi

Below Straddle Recorder Depth          ft. Recorder Number          Cap.          psi

Drilling Contractor Petromark Drilling, LLC - Rig 2 Drill Collar Length 123 ft. I.D. 2 1/4 in.

Mud Type Chemical Viscosity 65 Weight Pipe Length -- ft. I.D. -- in.

Weight 9.1 Water Loss 14.2 cc. Drill Pipe Length 3,159 ft. I.D. 3 1/2 in.

Chlorides 11,000 P.P.M. Test Tool Length 25 ft. Tool Size 3 1/2 - IF in.

Jars: Make Bowen Serial Number Not Run Anchor Length 50 ft. Size 4 1/2 - FH in.

Did Well Flow? No Reversed Out No Surface Choke Size 1 in. Bottom Choke Size 5/8 in.

Main Hole Size 7 7/8 in. Tool Joint Size 4 1/2 - XH in.

Blow: 1st Open: Weak, 1/8 in., blow increasing to 1 1/2 ins. No blow back during shut-in.

2nd Open: Weak, 1/2 in., blow increasing to 2 1/2 ins. No blow back during shut-in.

Recovered 15 ft. of drilling mud with a few oil specks = .073800 bbls.

Recovered          ft. of         

Recovered          ft. of         

Recovered          ft. of         

Recovered          ft. of         

Remarks Tool Sample Grind Out: 100%-drilling mud with good oil spots

Time Set Packer(s) 6:49 ~~P.M.~~ A.M. Time Started Off Bottom 8:49 ~~P.M.~~ A.M. Maximum Temperature 96°

Initial Hydrostatic Pressure          (A) 1587 P.S.I.

Initial Flow Period          Minutes 30 (B) 9 P.S.I. to (C) 24 P.S.I.

Initial Closed In Period          Minutes 30 (D) 58 P.S.I.

Final Flow Period          Minutes 30 (E) 23 P.S.I. to (F) 28 P.S.I.

Final Closed In Period          Minutes 30 (G) 60 P.S.I.

Final Hydrostatic Pressure          (H) 1552 P.S.I.

## GENERAL INFORMATION

### Client Information:

Company: L.D. DRILLING, INC.

Contact: L.D. DAVIS

Phone: Fax: e-mail:

### Site Information:

Contact: KIM SHOEMAKER

Phone: Fax: e-mail:

### Well Information:

Name: HALL 'G' #1-14

Operator: L.D. DRILLING, INC.

Location-Downhole: DST #2 LKC 'D-F' 3,307' - 3,357'

Location-Surface: SEC 14-21S-13W STAFFORD COUNTY

### Test Information:

Company: DIAMOND TESTING

Representative: ROGER D. FRIEDLY

Supervisor: KIM SHOEMAKER

Test Type: CONVENTIONAL Job Number:

Test Unit: NO. 1

Start Date: 2007/04/22 Start Time: 05:14:00

End Date: 2007/04/22 End Time: 10:18:00

Report Date: Prepared By:

Qualified By:

### Remarks:

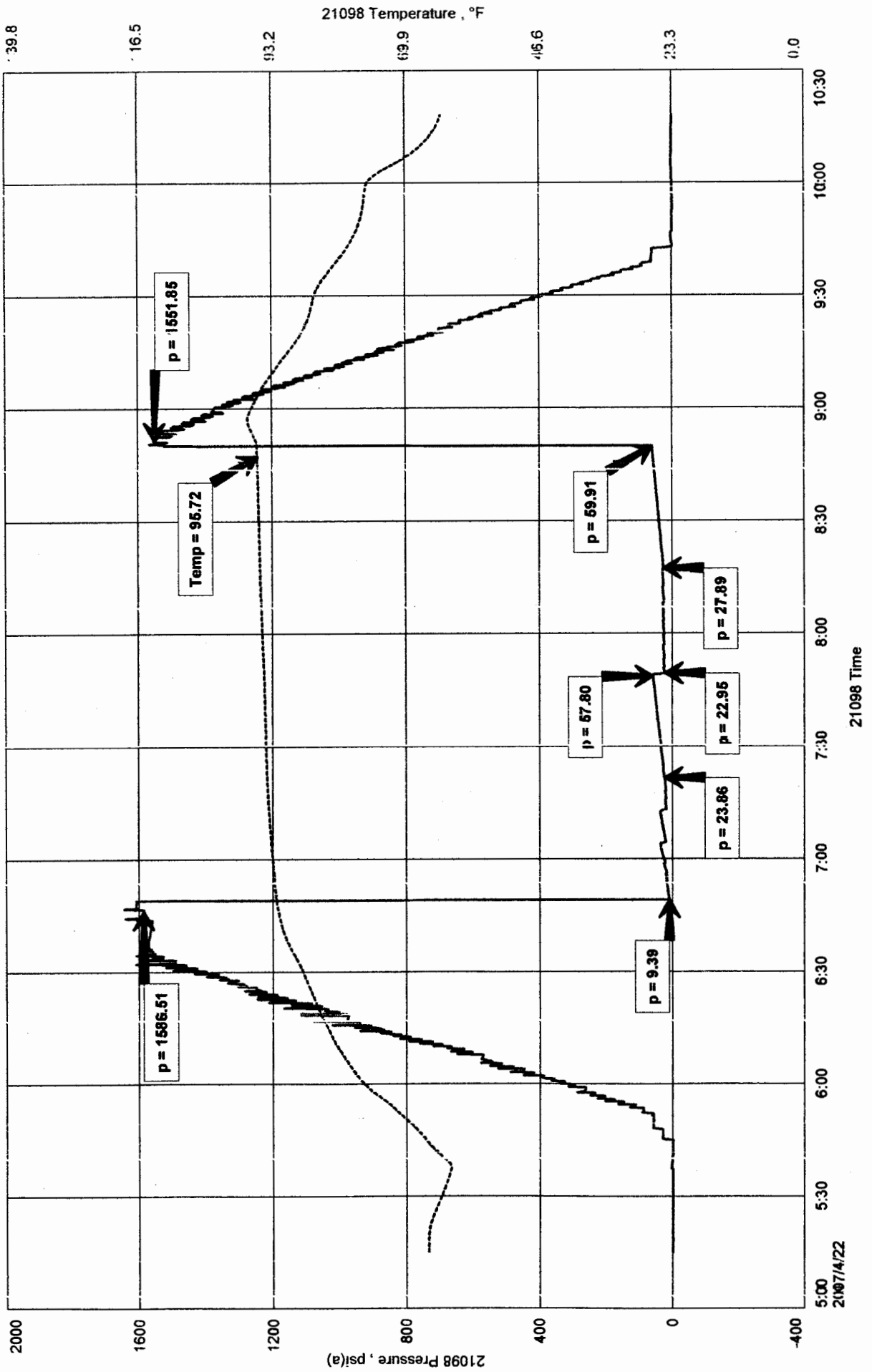
RECOVERED: 15' DM WITH A FEW OIL SPECKS

TOOL SAMPLE: 100% DM WITH GOOD OIL SPOTS

L.D. DRILLING, INC.  
 DST #2 LKC 'D-F' 3,307' - 3,357'  
 Start Test Date: 2007/04/22  
 Final Test Date: 2007/04/22

HALL 'G' #1-14  
 Formation: DST #2 LKC 'D-F' 3,307' - 3,357'  
 Pool: WILDCAT

# HALL 'G' #1-14

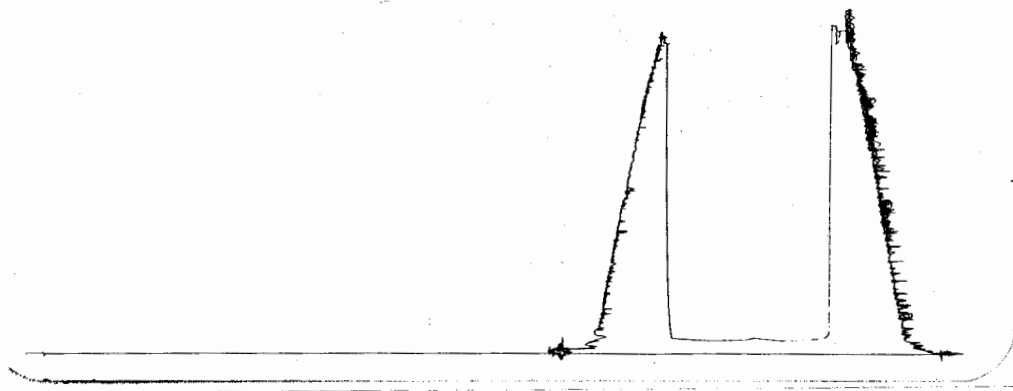


DST # 2 Outside 13397

LKC D-F

2307-3357

L01 3354



This is an actual photograph of recorder chart.

POINT	PRESSURE		Elec. Office Reading	PSI
	Field Reading			
(A) Initial Hydrostatic Mud .....	1587	1587		PSI
(B) First Initial Flow Pressure.....	9	9		PSI
(C) First Final Flow Pressure .....	24	24		PSI
(D) Initial Closed-in Pressure .....	58	58		PSI
(E) Second Initial Flow Pressure .....	23	23		PSI
(F) Second Final Flow Pressure.....	28	28		PSI
(G) Final Closed-in Pressure.....	60	60		PSI
(H) Final Hydrostatic Mud .....	1552	1552		PSI



# DIAMOND TESTING

P.O. Box 157  
HOISINGTON, KANSAS 67544  
(620) 653-7550 • (800) 542-7313  
STC 21098.D411

Company L. D. Drilling, Inc. Lease & Well No. Hall "G" No. 1-14  
Elevation 1868KB Formation Lansing/Kansas City "H-J" Effective Pay -- Ft. Ticket No. 2293  
Date 4-22-07 Sec. 14 Twp. 21S Range 13W County Stafford State Kansas

Test Approved By Kim Shoemaker Diamond Representative Roger D. Friedly

Formation Test No. 3 Interval Tested from 3,392 ft. to 3,446 ft. Total Depth 3,446 ft.

Packer Depth 3,387 ft. Size 6 3/4 in. Packer Depth -- ft. Size -- in.

Packer Depth 3,392 ft. Size 6 3/4 in. Packer Depth -- ft. Size -- in.

Depth of Selective Zone Set          ft.

Top Recorder Depth (Inside) 3,380 ft. Recorder Number 21098 Cap. 5,000 psi

Bottom Recorder Depth (Outside) 3,443 ft. Recorder Number 13387 Cap. 4,000 psi

Below Straddle Recorder Depth          ft. Recorder Number          Cap.          psi

Drilling Contractor Petromark Drilling, LLC - Rig 2 Drill Collar Length 123 ft. I.D. 2 1/4 in.

Mud Type Chemical Viscosity 65 Weight Pipe Length -- ft. I.D. -- in.

Weight 9.1 Water Loss 14.2 cc. Drill Pipe Length 3,244 ft. I.D. 3 1/2 in.

Chlorides 11,000 P.P.M. Test Tool Length 25 ft. Tool Size 3 1/2 - IF in.

Jars: Make Bowen Serial Number Not Run Anchor Length 54 ft. Size 4 1/2 - FH in.

Did Well Flow? No Reversed Out No Surface Choke Size 1 in. Bottom Choke Size 5/8 in.

Main Hole Size 7 7/8 in. Tool Joint Size 4 1/2 - XH in.

Blow: 1st Open: Tool slid 12 ft. Weak, 1/8 in., blow increasing to 6 ins. No blow back during shut-in.  
2nd Open: Fair, 1 in., blow increasing. Off bottom of bucket in 26 mins. Fair, 2 in., blow back during shut-in.

Recovered 210 ft. of gas in pipe

Recovered 20 ft. of gas & water cut oily mud = .284000 bbls. (Grind out: 2%-gas; 10%-water; 28%-oil; 60%-mud)

Recovered 62 ft. of oil & gas cut muddy water = .880400 bbls. (Grind out: 2%-oil; 10%-gas; 43%-mud; 45%-water)

Recovered 123 ft. of oil & gas cut muddy water = .605160 bbls. (Grind out: 6%-oil; 10%-gas; 35%-mud; 49%-water)

Recovered 205 ft. of TOTAL FLUID = 1.769560 bbls. (Chlorides: 32,000 Ppm)

Remarks Tool Sample Grind out: 2%-gas; 10%-oil; 36%-mud; 52%-water

Time Set Packer(s) 10:30 ~~XX~~ P.M. Time Started Off Bottom 1:30 ~~XX~~ A.M. Maximum Temperature 100°

Initial Hydrostatic Pressure ..... (A) 1606 P.S.I.

Initial Flow Period ..... Minutes 30 (B) 64 P.S.I. to (C) 80 P.S.I.

Initial Closed In Period ..... Minutes 45 (D) 1681 P.S.I.

Final Flow Period ..... Minutes 45 (E) 84 P.S.I. to (F) 102 P.S.I.

Final Closed In Period ..... Minutes 60 (G) 1556 P.S.I.

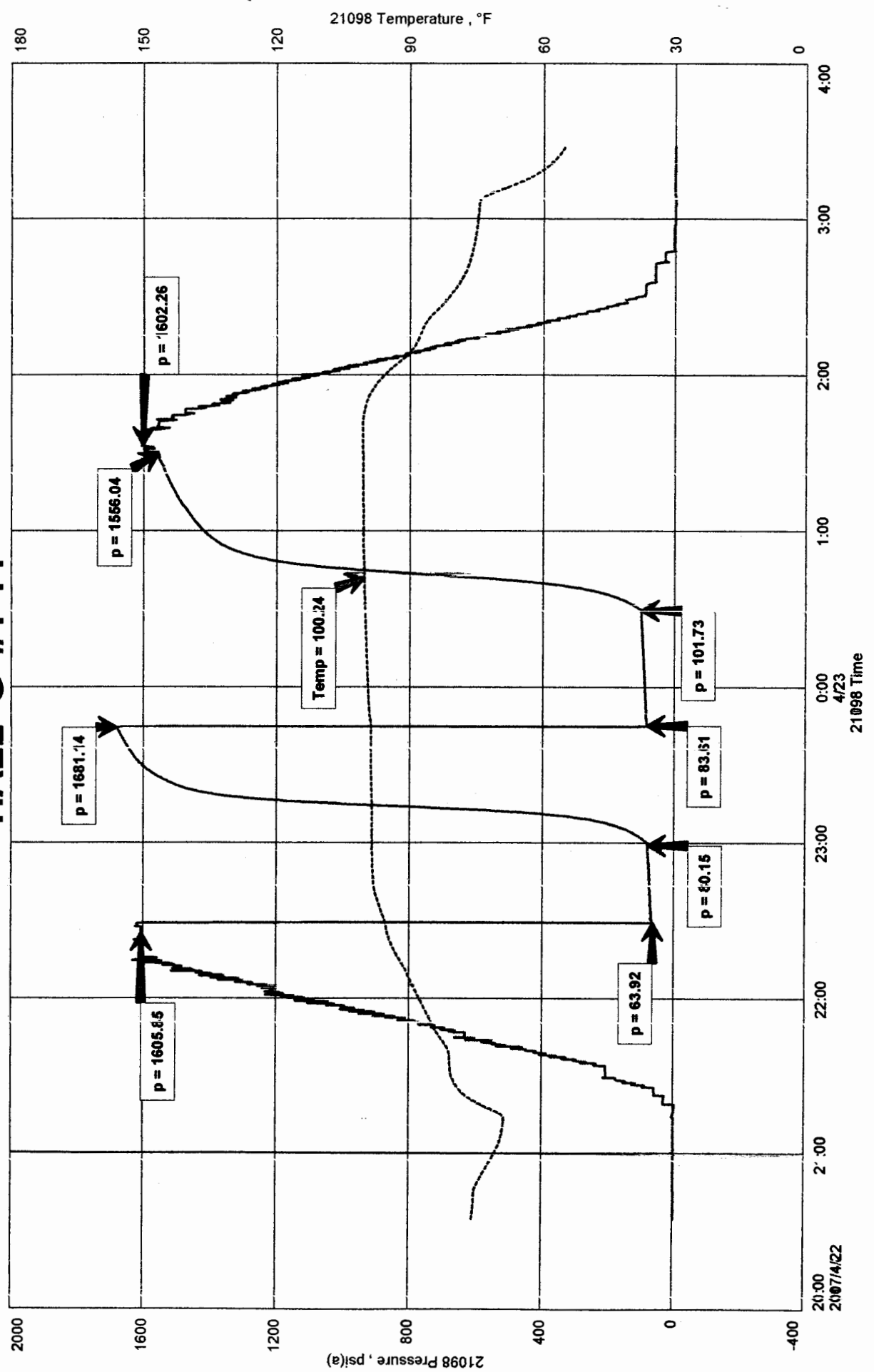
Final Hydrostatic Pressure ..... (H) 1602 P.S.I.



L.D. DRILLING, INC.  
 DST #3 LKC 'H-J' 3,392' - 3,446'  
 Start Test Date: 2007/04/22  
 Final Test Date: 2007/04/23

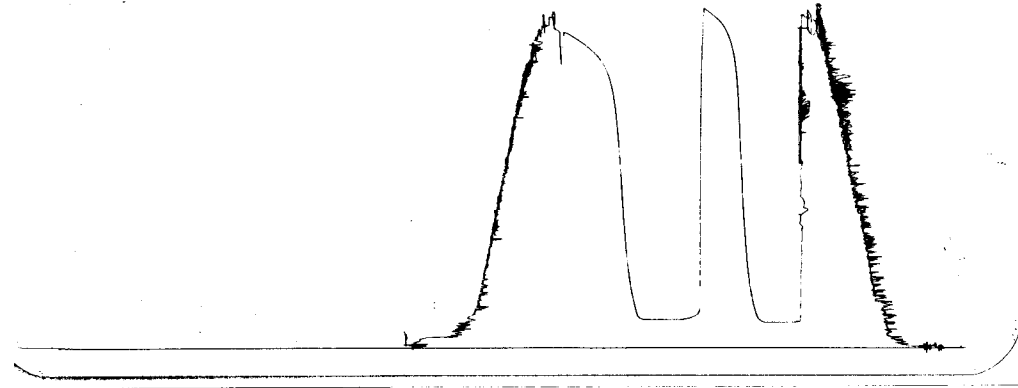
HALL 'G' #1-14  
 Formation: DST #3 LKC 'H-J' 3,392' - 3,446'  
 Pool: WILDCAT

# HALL 'G' #1-14



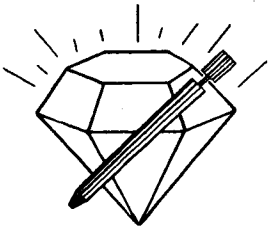
DST # 3 outside 13367  
LKC H-J

3393-3446  
LOL 3343



This is an actual photograph of recorder chart.

POINT	PRESSURE		Elec. Office Reading	PSI
	Field Reading			
(A) Initial Hydrostatic Mud	1606	1606	1606	PSI
(B) First Initial Flow Pressure	64	64	64	PSI
(C) First Final Flow Pressure	80	80	80	PSI
(D) Initial Closed-in Pressure	1681	1681	1681	PSI
(E) Second Initial Flow Pressure	84	84	84	PSI
(F) Second Final Flow Pressure	102	102	102	PSI
(G) Final Closed-in Pressure	1556	1556	1556	PSI
(H) Final Hydrostatic Mud	1602	1602	1602	PSI



# DIAMOND TESTING

P.O. Box 157  
HOISINGTON, KANSAS 67544  
(620) 653-7550 • (800) 542-7313  
STC 21098.D 412

Company L. D. Drilling, Inc. Lease & Well No. Hall "G" No. 1-14  
Elevation 1868KB Formation Lansing/Kansas City "K" - "L" Effective Pay -- Ft. Ticket No. 2294  
Date 4-23-07 Sec. 14 Twp. 21S Range 13W County Stafford State Kansas

Test Approved By Kim Shoemaker Diamond Representative Roger D. Friedly

Formation Test No. 4 Interval Tested from 3,444 ft. to 3,498 ft. Total Depth 3,498 ft.

Packer Depth 3,439 ft. Size 6 3/4 in. Packer Depth -- ft. Size -- in.

Packer Depth 3,444 ft. Size 6 3/4 in. Packer Depth -- ft. Size -- in.

Depth of Selective Zone Set          ft.

Top Recorder Depth (Inside) 3,432 ft. Recorder Number 21098 Cap. 5,000 psi

Bottom Recorder Depth (Outside) 3,495 ft. Recorder Number 13387 Cap. 4,000 psi

Below Straddle Recorder Depth          ft. Recorder Number          Cap.          psi

Drilling Contractor Petromark Drilling, LLC - Rig 2 Drill Collar Length 123 ft. I.D. 2 1/4 in.

Mud Type Chemical Viscosity 44 Weight Pipe Length -- ft. I.D. -- in.

Weight 9.0 Water Loss 12.2 cc. Drill Pipe Length 3,296 ft. I.D. 3 1/2 in.

Chlorides 14,000 P.P.M. Test Tool Length 25 ft. Tool Size 3 1/2 - IF in.

Jars: Make Bowen Serial Number Not Run Anchor Length 54 ft. Size 4 1/2 - FH in.

Did Well Flow? No Reversed Out No Surface Choke Size 1 in. Bottom Choke Size 5/8 in.

Main Hole Size 7 7/8 in. Tool Joint Size 4 1/2 - XH in.

Blow: 1st Open: Weak, 1/8 in., blow increasing to 1 3/4 ins. No blow back during shut-in.

2nd Open: Weak, 1/8 in., blow increasing to 2 ins. No blow back during shut-in.

Recovered 30 ft. of gas in pipe

Recovered 30 ft. of gas & heavy oil cut mud = .147600 bbls. (Grind out: 2%-gas; 42%-oil; 56%-mud)

Recovered 30 ft. of TOTAL FLUID = .147600 bbls.

Recovered          ft. of         

Recovered          ft. of         

Remarks Tool Sample Grind Out: 2%-gas; 54%-oil; 44%-mud

Time Set Packer(s) 2:15 ~~XXX~~ P.M. Time Started Off Bottom 4:15 ~~PM~~ A.M. Maximum Temperature 97°

Initial Hydrostatic Pressure ..... (A) 1656 P.S.I.

Initial Flow Period ..... Minutes 30 (B) 9 P.S.I. to (C) 23 P.S.I.

Initial Closed In Period ..... Minutes 30 (D) 73 P.S.I.

Final Flow Period ..... Minutes 30 (E) 24 P.S.I. to (F) 29 P.S.I.

Final Closed In Period ..... Minutes 30 (G) 49 P.S.I.

Final Hydrostatic Pressure ..... (H) 1648 P.S.I.

## GENERAL INFORMATION

### Client Information:

Company: L.D. DRILLING, INC.  
Contact: L.D. DAVIS  
Phone: Fax: e-mail:

### Site Information:

Contact: KIM SHOEMAKER  
Phone: Fax: e-mail:

### Well Information:

Name: HALL 'G' # 1-14  
Operator: L.D. DRILLING, INC.  
Location-Downhole: DST #4 LKC 'K-L' 3,444' - 3,498'  
Location-Surface: SEC 14-21S-13W STAFFORD COUNTY

### Test Information:

Company: DIAMOND TESTING  
Representative: TOGER D. FRIEDLY  
Supervisor: KIM SHOEMAKER  
Test Type: CONVENTIONAL  
Test Unit: NO. 1  
Start Date: 2007/04/23  
End Date: 2007/04/23  
Report Date:  
Job Number:  
Start Time: 12:35:00  
End Time: 17:48:00  
Prepared By:  
Qualified By:

### Remarks:

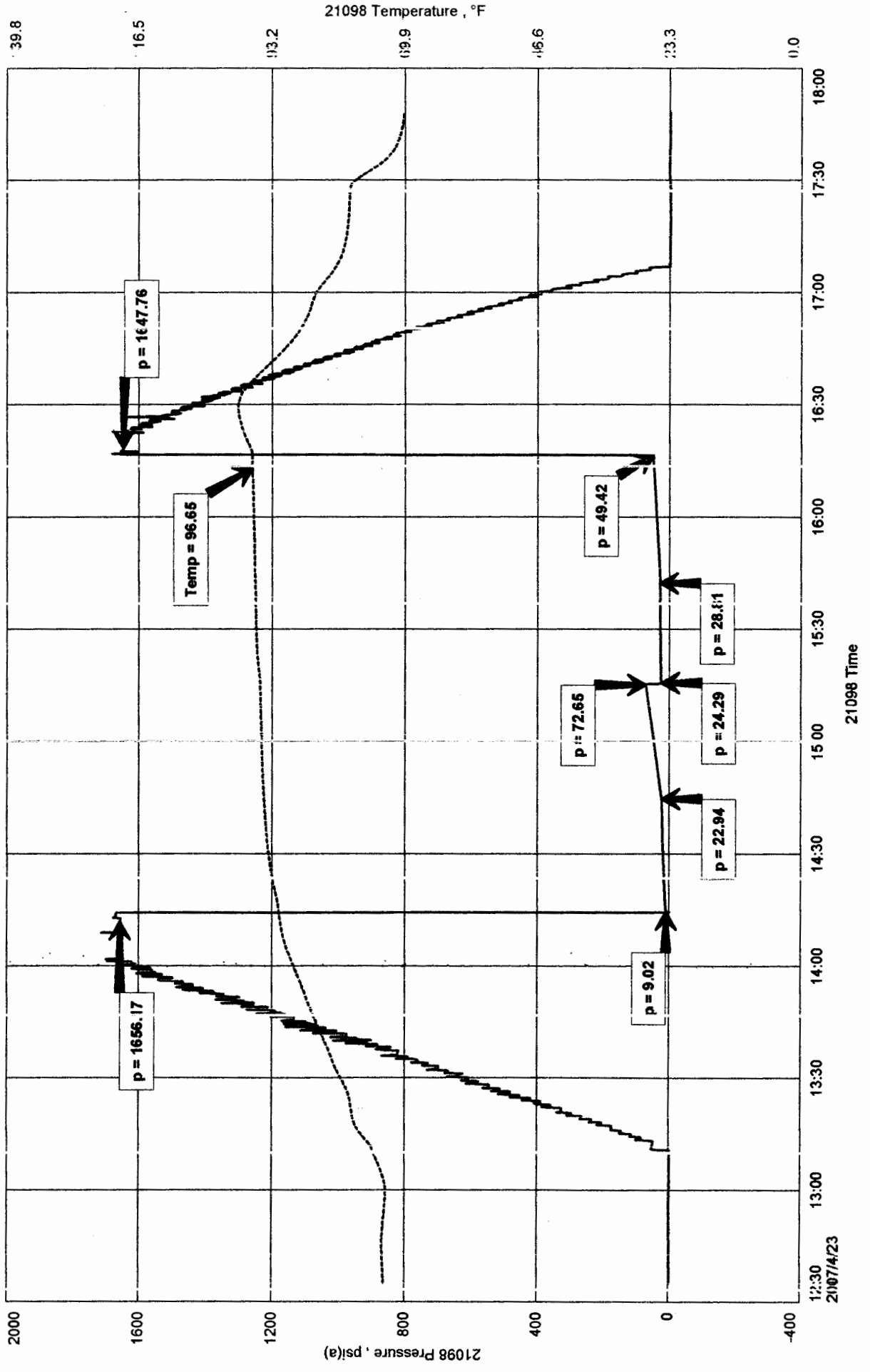
RECOVERED: 30' GAS IN PIPE  
30' G&HOCM 2% GAS, 42% OIL, 56% MUD

TOOL SAMPLE: 2% GAS, 44% MUD, 54% OIL

L.D. DRILLING, INC.  
 DST #4 LKC 'K-L' 3,444' - 3,498'  
 Start Test Date: 2007/04/23  
 Final Test Date: 2007/04/23

HALL 'G' # 1-14  
 Formation: DST #4 LKC 'K-L' 3,444' - 3,498'  
 Pool: WI\_DCAT

# HALL 'G' # 1-14

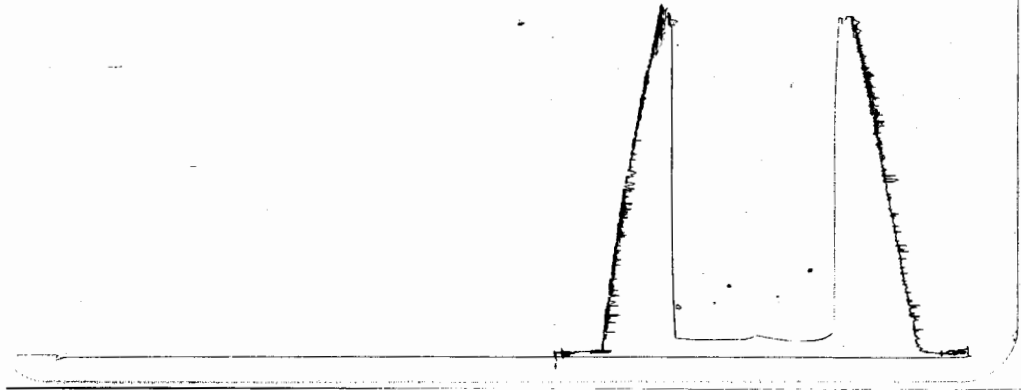


DST # 4 outside 13387

LKC K-L

3444-3498

LOC 3495



This is an actual photograph of recorder chart.

POINT	PRESSURE		Elec. Office Reading	PSI
	Field Reading			
(A) Initial Hydrostatic Mud	1656	1656		PSI
(B) First Initial Flow Pressure	9	9		PSI
(C) First Final Flow Pressure	23	23		PSI
(D) Initial Closed-in Pressure	73	73		PSI
(E) Second Initial Flow Pressure	24	24		PSI
(F) Second Final Flow Pressure	29	29		PSI
(G) Final Closed-in Pressure	49	49		PSI
(H) Final Hydrostatic Mud	1648	1648		PSI



# DIAMOND TESTING

P.O. Box 157

HOISINGTON, KANSAS 67544

(620) 653-7550 • (800) 542-7313  
STC 21098.D413

Page 1 of 2 Pages

Company L. D. Drilling, Inc. Lease & Well No. Hall "G" No. 1-14  
 Elevation 1868KB Formation Arbuckle Effective Pay -- Ft. Ticket No. 2295  
 Date 4-24-07 Sec. 14 Twp. 21S Range 13W County Stafford State Kansas  
 Test Approved By Kim Shoemaker Diamond Representative Roger D. Friedly

Formation Test No. 5 Interval Tested from 3,490 ft. to 3,552 ft. Total Depth 3,552 ft.  
 Packer Depth 3,485 ft. Size 6 3/4 in. Packer Depth -- ft. Size -- in.  
 Packer Depth 3,490 ft. Size 6 3/4 in. Packer Depth -- ft. Size -- in.  
 Depth of Selective Zone Set          ft.

Top Recorder Depth (Inside) 3,478 ft. Recorder Number 21098 Cap. 5,000 psi  
 Bottom Recorder Depth (Outside) 3,549 ft. Recorder Number 13387 Cap. 4,000 psi  
 Below Straddle Recorder Depth          ft. Recorder Number          Cap.          psi

Drilling Contractor Petromark Drilling, LLC - Rig 2 Drill Collar Length 123 ft. I.D. 2 1/4 in.  
 Mud Type Chemical Viscosity 44 Weight Pipe Length -- ft. I.D. -- in.  
 Weight 9.0 Water Loss 12.2 cc. Drill Pipe Length 3,342 ft. I.D. 3 1/2 in.  
 Chlorides 14,000 P.P.M. Test Tool Length 25 ft. Tool Size 3 1/2 - IF in.  
 Jars: Make Bowen Serial Number Not Run Anchor Length 30' perf. w/32' drill pipe Size 4 1/2 - FH in.  
 Did Well Flow? No Reversed Out No Surface Choke Size 1 in. Bottom Choke Size 5/8 in.  
 Main Hole Size 7/8 in. Tool Joint Size 4 1/2 - XH in.

Blow: 1st Open: Good, 6 in., blow increasing. Off bottom of bucket in 5 mins. Good, 6 in., blow back during shut-in.  
 2nd Open: Fair, 1 in., blow increasing. Off bottom of bucket in 18 mins. Good, 10 1/2 in., blow back during shut-in.

Recovered 475 ft. of gas in pipe  
102 ft of clean oil = 1.448400 bbls. (Gravity: 38 @ 60°)  
 Recovered 42 ft. of heavy oil cut mud = .596400 bbls. (Grind out: 32%-oil; 68%-mud)  
 Recovered 125 ft. of heavy oil cut mud = 1.199640 bbls. (Grind out: 32%-oil; 68%-mud with a trace of water)  
 Recovered 61 ft. of slightly water & gas cut oily mud = .300120 bbls. (Grind out: 4%-water; 8%-gas; 20%-oil; 68%-mud)  
 Recovered 330 ft. of TOTAL FLUID = 3.544560 bbls.

Remarks Tool Sample Grind Out: 8%-water; 18%-oil; 22%-gas; 52%-mud

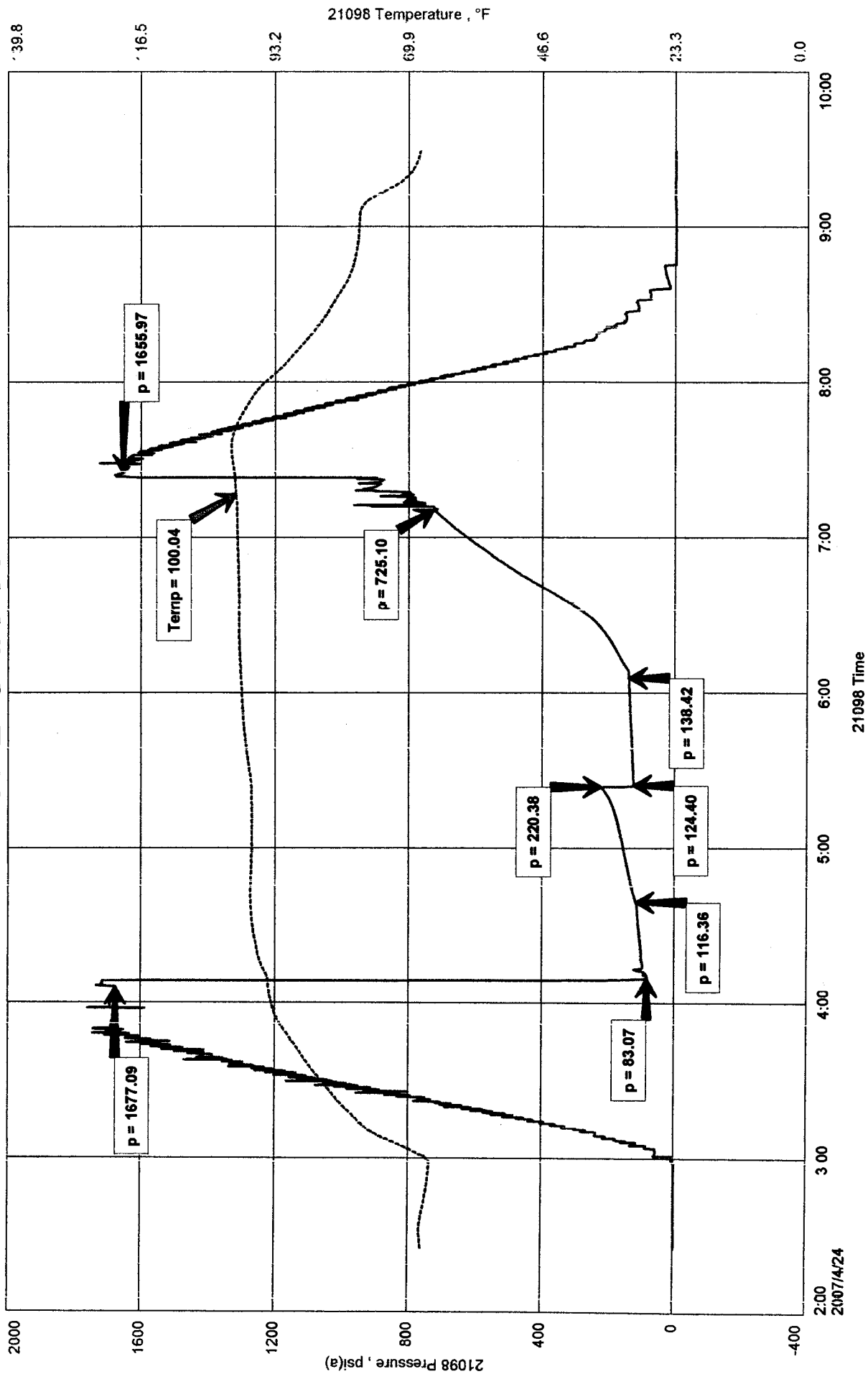
Time Set Packer(s)	<del>XXX</del> A.M.	Time Started Off Bottom	<del>XXX</del> A.M.	Maximum Temperature
<u>4:09</u>	<del>XXX</del>	<u>7:09</u>	<del>XXX</del>	<u>100°</u>
Initial Hydrostatic Pressure	(A)	<u>1677</u>	P.S.I.	
Initial Flow Period	Minutes <u>30</u>	(B)	<u>83</u>	P.S.I. to (C) <u>116</u> P.S.I.
Initial Closed In Period	Minutes <u>45</u>	(D)	<u>220</u>	P.S.I.
Final Flow Period	Minutes <u>45</u>	(E)	<u>124</u>	P.S.I. to (F) <u>138</u> P.S.I.
Final Closed In Period	Minutes <u>60</u>	(G)	<u>725</u>	P.S.I.
Final Hydrostatic Pressure	(H)	<u>1656</u>	P.S.I.	



L.D. DRILLING, INC.  
 DST #5 ARBUCKLE 3,490' - 3,552'  
 Start Test Date: 2007/04/24  
 Final Test Date: 2007/04/24

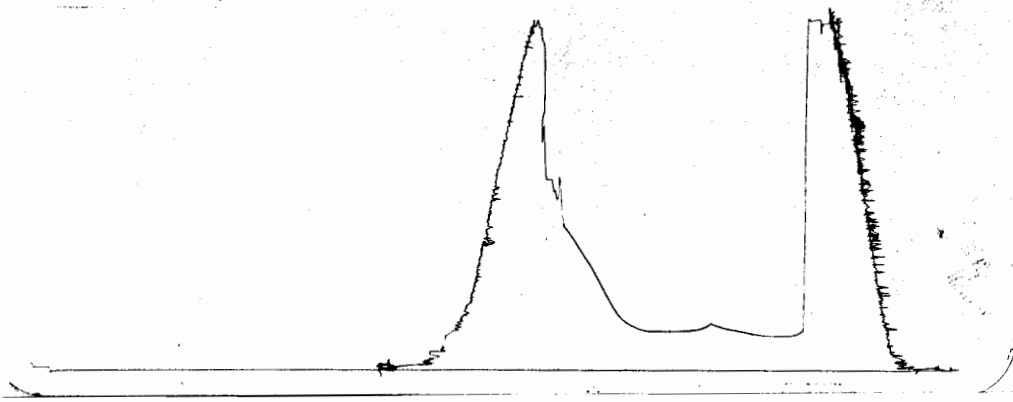
HALL 'G' #1-14  
 Formation: DST #5 ARBUCKLE 3,490' - 3,553'  
 Pool: WILDCAT

# HALL 'G' #1-14



DSJ # 5 Oxford 13387  
ARB

3490-3552  
LDL 3549



This is an actual photograph of recorder chart.

POINT	PRESSURE		Elec. Office Reading	PSI
	Field Reading			
(A) Initial Hydrostatic Mud	1677	1677		PSI
(B) First Initial Flow Pressure	83	83		PSI
(C) First Final Flow Pressure	116	116		PSI
(D) Initial Closed-in Pressure	220	220		PSI
(E) Second Initial Flow Pressure	124	124		PSI
(F) Second Final Flow Pressure	138	138		PSI
(G) Final Closed-in Pressure	725	725		PSI
(H) Final Hydrostatic Mud	1656	1656		PSI