



15-185-23585

12-215-13w

### DIAMOND TESTING

P.O. Box 157  
HOISINGTON, KANSAS 67544  
(620) 653-7550 • (800) 542-7313  
STC 30035.D070

Company L. D. Drilling, Inc. Lease & Well No. Batman No. 1-12

Elevation 1871 KB Formation Lansing "A"- "F" Effective Pay -- Ft. Ticket No. P070

Date 9-5-09 Sec. 12 Twp. 21S Range 13W County Stafford State Kansas

Test Approved By Kim B. Shoemaker Diamond Representative Paul Schilowsky

Formation Test No. 1 Interval Tested from 3,251 ft. to 3,342 ft. Total Depth 3,342 ft.

Packer Depth 3,246 ft. Size 6 3/4 in. Packer Depth -- ft. Size -- in.

Packer Depth 3,251 ft. Size 6 3/4 in. Packer Depth -- ft. Size -- in.

Depth of Selective Zone Set          ft.

Top Recorder Depth (Inside)          3,241 ft. Recorder Number 30035 Cap. 5,000 psi

Bottom Recorder Depth (Outside)          3,339 ft. Recorder Number 13387 Cap. 3,900 psi

Below Straddle Recorder Depth          ft. Recorder Number          Cap.          psi

Drilling Contractor Duke Drilling Company, Inc. - Rig 9 Drill Collar Length -- ft. I.D. -- in.

Mud Type Chemical Viscosity 46 Weight Pipe Length -- ft. I.D. -- in.

Weight 9.3 Water Loss 10.4 cc. Drill Pipe Length 3,226 ft. I.D. 3 1/2 in.

Chlorides 6,000 P.P.M. Test Tool Length 25 ft. Tool Size 3 1/2 - IF in.

Jars: Make Sterling Serial Number N/A Anchor Length 28' perf. w/63' drill pipe Size 4 1/2 - FH in.

Did Well Flow? No Reversed Out No Surface Choke Size 1 in. Bottom Choke Size 5/8 in.

Main Hole Size 7 7/8 in. Tool Joint Size 4 1/2 - XH in.

Blow: 1st Open: Good blow increasing to 6 ins. No blow back during shut-in.

2nd Open: Good blow increasing to 8 ins. No blow back during shut-in.

Recovered 140 ft. of gas in pipe

Recovered 82 ft. of oil cut watery mud = 1.166860 bbls. (Grind out: 7%-oil; 13%-water; 80%-mud)

Recovered 82 ft. of TOTAL FLUID = 1.166860 bbls.

Recovered          ft. of         

Recovered          ft. of         

Remarks Tool Sample Grind Out: 5%-oil; 15%-water; 80%-mud

Time Set Packer(s) 5:45 <sup>XXM.</sup> P.M. Time Started Off Bottom 8:45 <sup>XXM.</sup> P.M. Maximum Temperature 105°

Initial Hydrostatic Pressure ..... (A) 1585 P.S.I.

Initial Flow Period ..... Minutes 30 (B) 23 P.S.I. to (C) 43 P.S.I.

Initial Closed In Period ..... Minutes 45 (D) 934 P.S.I.

Final Flow Period ..... Minutes 45 (E) 42 P.S.I. to (F) 61 P.S.I.

Final Closed In Period ..... Minutes 60 (G) 825 P.S.I.

Final Hydrostatic Pressure ..... (H) 1575 P.S.I.

## GENERAL INFORMATION

### Client Information:

Company: LD DRLG. CO.

Contact: LD DAVIS

Phone: Fax: e-mail:

### Site Information:

Contact: KIM SHOEMAKER

Phone: Fax: e-mail:

### Well Information:

Name: BATMAN 1-12

Operator: LD DRLG. CO.

Location-Downhole: DST #1 LAN. A-F 3251-3342

Location-Surface: SEC12 / 21S / 13W

### Test Information:

Company: DIAMOND TESTING

Representative: PAUL

Supervisor: KIM SHOEMAKER

Test Type: Drill Stem Test Job Number: P070

Test Unit: NO. 1

Start Date: 2009/09/05 Start Time: 15:10:00

End Date: 2009/09/05 End Time: 23:05:00

Report Date: 2009/09/05 Prepared By: PAUL

Qualified By: KIM

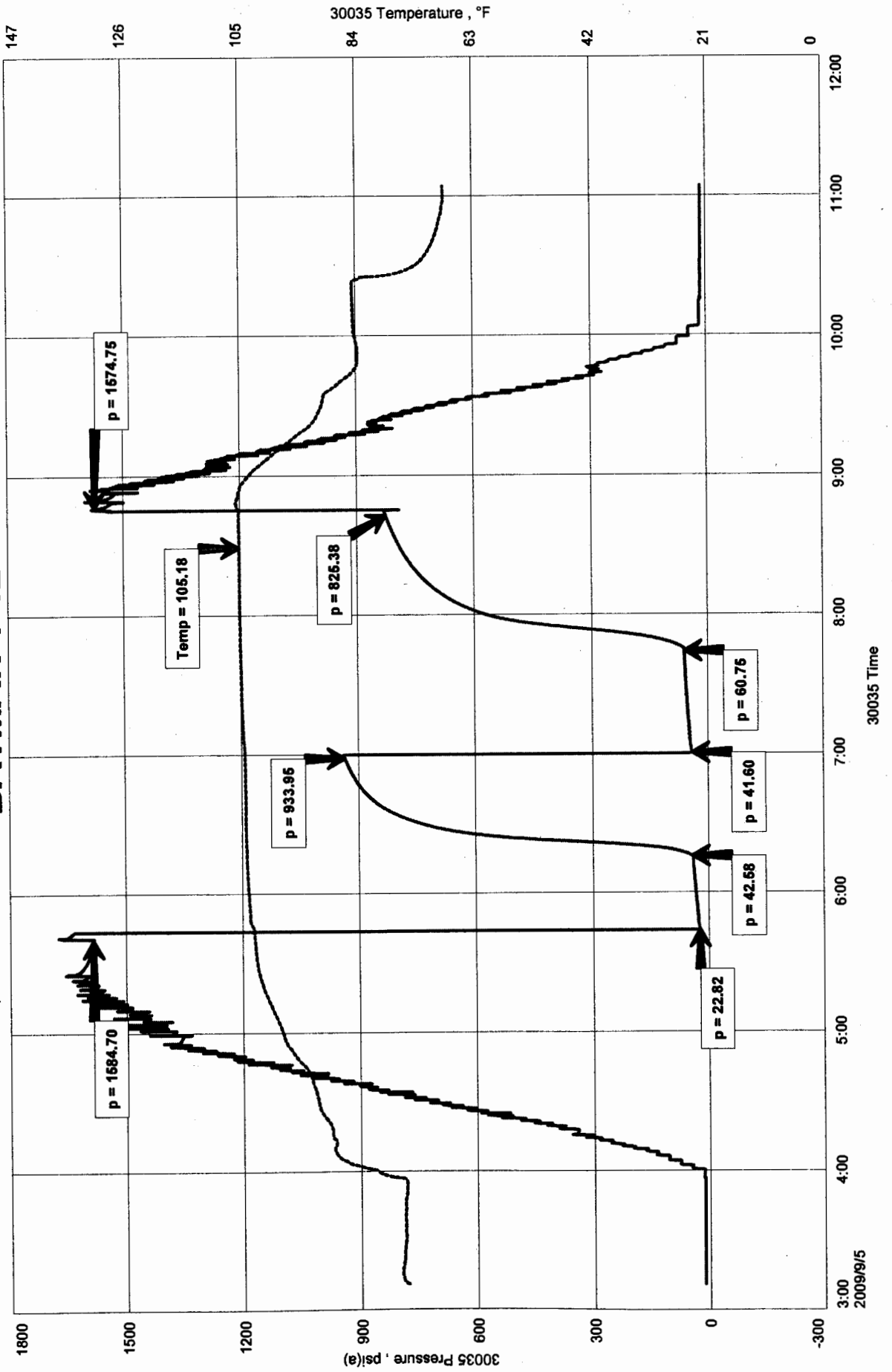
### Remarks:

RECOVERED: 140` GIP  
82` OCWM 7%O / 13%W / 80%M  
82` OF FLUID TOTAL  
TOOL SMPL: 5%O / 15%W / 80%M

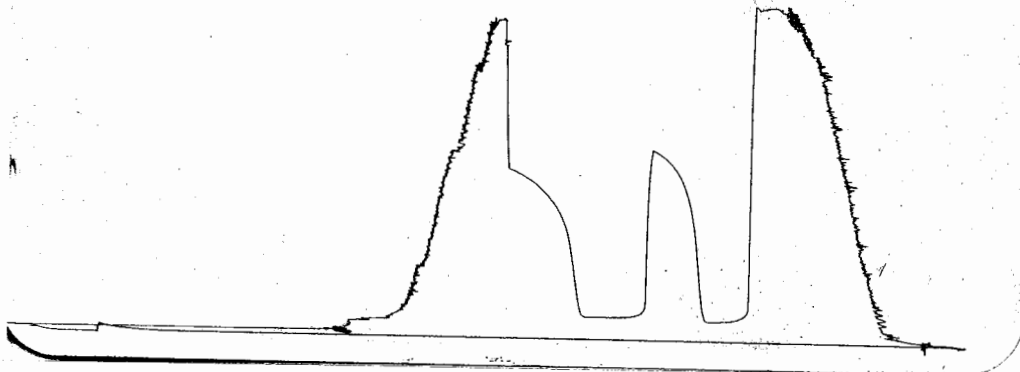
BATMAN 1-12  
 Formation: DST #1 LAN. A-F 3251-3342  
 Job Number: P070

LD DRLG. CO.  
 DST #1 LAN. A-F 3251-3342  
 Start Test Date: 2009/09/05  
 Final Test Date: 2009/09/05

# BATMAN 1-12



PS# [45] 3251 - 3342 outside LOC 3339



This is an actual photograph of recorder chart.

POINT	PRESSURE		PSI
	Field Reading	Elec. Office Reading	
(A) Initial Hydrostatic Mud	1585	1585	PSI
(B) First Initial Flow Pressure	23	23	PSI
(C) First Final Flow Pressure	43	43	PSI
(D) Initial Closed-in Pressure	934	934	PSI
(E) Second Initial Flow Pressure	42	42	PSI
(F) Second Final Flow Pressure	61	61	PSI
(G) Final Closed-in Pressure	825	825	PSI
(H) Final Hydrostatic Mud	1575	1575	PSI



# DIAMOND TESTING

P.O. Box 157  
HOISINGTON, KANSAS 67544  
(620) 653-7550 • (800) 542-7313  
STC 30035.D071

Company L. D. Drilling, Inc. Lease & Well No. Batman No. 1-12

Elevation 1871 KB Formation Arbuckle Effective Pay -- Ft. Ticket No. P071

Date 9-6-09 Sec. 12 Twp. 21S Range 13W County Stafford State Kansas

Test Approved By Kim B. Shoemaker Diamond Representative Paul Schilowsky

Formation Test No. 2 Interval Tested from 3,470 ft. to 3,512 ft. Total Depth 3,512 ft.

Packer Depth 3,465 ft. Size 6 3/4 in. Packer Depth -- ft. Size -- in.

Packer Depth 3,470 ft. Size 6 3/4 in. Packer Depth -- ft. Size -- in.

Depth of Selective Zone Set          ft.

Top Recorder Depth (Inside) 3,458 ft. Recorder Number 30035 Cap. 5,000 psi

Bottom Recorder Depth (Outside) 3,509 ft. Recorder Number 13387 Cap. 3,900 psi

Below Straddle Recorder Depth          ft. Recorder Number          Cap.          psi

Drilling Contractor Duke Drilling Company, Inc. - Rig 9 Drill Collar Length -- ft. I.D. -- in.

Mud Type Chemical Viscosity 46 Weight Pipe Length -- ft. I.D. -- in.

Weight 9.3 Water Loss 10.4 cc. Drill Pipe Length 3,443 ft. I.D. 3 1/2 in.

Chlorides 6,000 P.P.M. Test Tool Length 27 ft. Tool Size 3 1/2 - IF in.

Jars: Make Sterling Serial Number N/A Anchor Length 42 ft. Size 4 1/2 - FH in.

Did Well Flow? No Reversed Out No Surface Choke Size 1 in. Bottom Choke Size 5/8 in.

Main Hole Size 7 7/8 in. Tool Joint Size 4 1/2 - XH in.

Blow: 1st Open: Strong blow. Off bottom of bucket in 14 mins. Very weak surface blow back during shut-in.

2nd Open: Strong blow. Off bottom of bucket in 6 mins. No blow back during shut-in.

Recovered 712 ft. of gas in pipe

Recovered 30 ft. of gas & mud cut oil = .426900 bbls. (Grind out: 10%-gas; 40%-mud; 50%-oil)

Recovered 62 ft. of gas & oil cut mud = .882260 bbls. (Grind out: 10%-gas; 20%-oil; 70%-mud)

Recovered 92 ft. of TOTAL FLUID = 1.309160 bbls.

Recovered          ft. of         

Remarks Tool Sample Grind Out: 10%-gas; 45%-mud; 45%-oil

Time Set Packer(s) 2:20 ~~XXM.~~ P.M. Time Started Off Bottom 5:20 ~~XXM.~~ P.M. Maximum Temperature 108 °

Initial Hydrostatic Pressure ..... (A) 1725 P.S.I.

Initial Flow Period ..... Minutes 30 (B) 27 P.S.I. to (C) 42 P.S.I.

Initial Closed In Period ..... Minutes 45 (D) 753 P.S.I.

Final Flow Period ..... Minutes 45 (E) 48 P.S.I. to (F) 59 P.S.I.

Final Closed In Period ..... Minutes 60 (G) 746 P.S.I.

Final Hydrostatic Pressure ..... (H) 1724 P.S.I.

## GENERAL INFORMATION

### Client Information:

Company: LD DRLG. CO.

Contact: LD DAVIS

Phone: Fax: e-mail:

### Site Information:

Contact: KIM SHOEMAKER

Phone: Fax: e-mail:

### Well Information:

Name: BATMAN 1-12

Operator: LD DRLG. CO.

Location-Downhole: DST #2 ARBUCKLE 3470-3512

Location-Surface: SEC 12 / 21S / 13W

### Test Information:

Company: DIAMOND TESTING

Representative: PAUL

Supervisor: KIM SHOEMAKER

Test Type: Drill Stem Test Job Number: P071

Test Unit: NO. 1

Start Date: 2009/09/06 Start Time: 12:28:00

End Date: 2009/09/06 End Time: 20:06:00

Report Date: 2009/09/06 Prepared By: PAUL

Qualified By: KIM

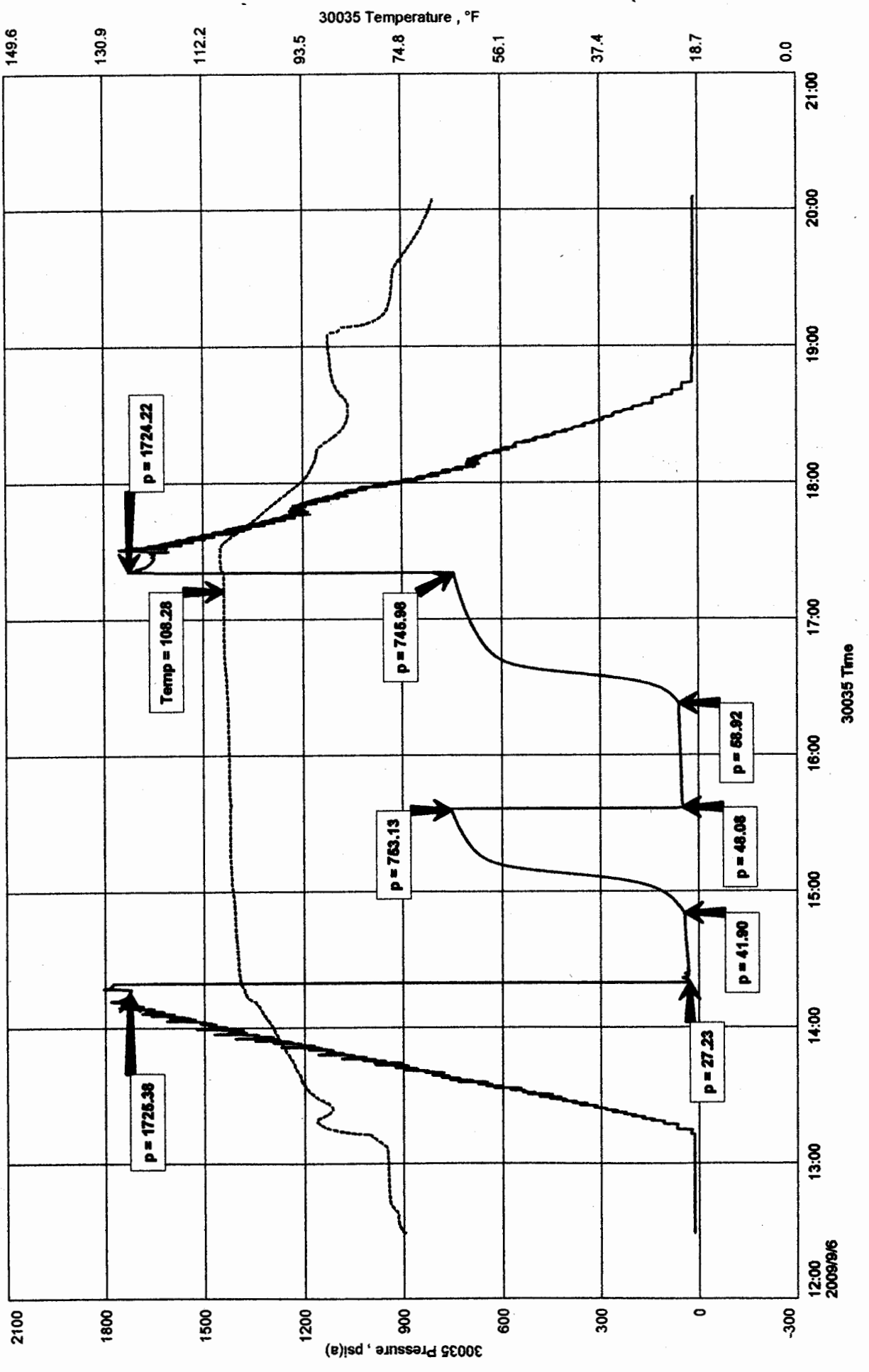
### Remarks:

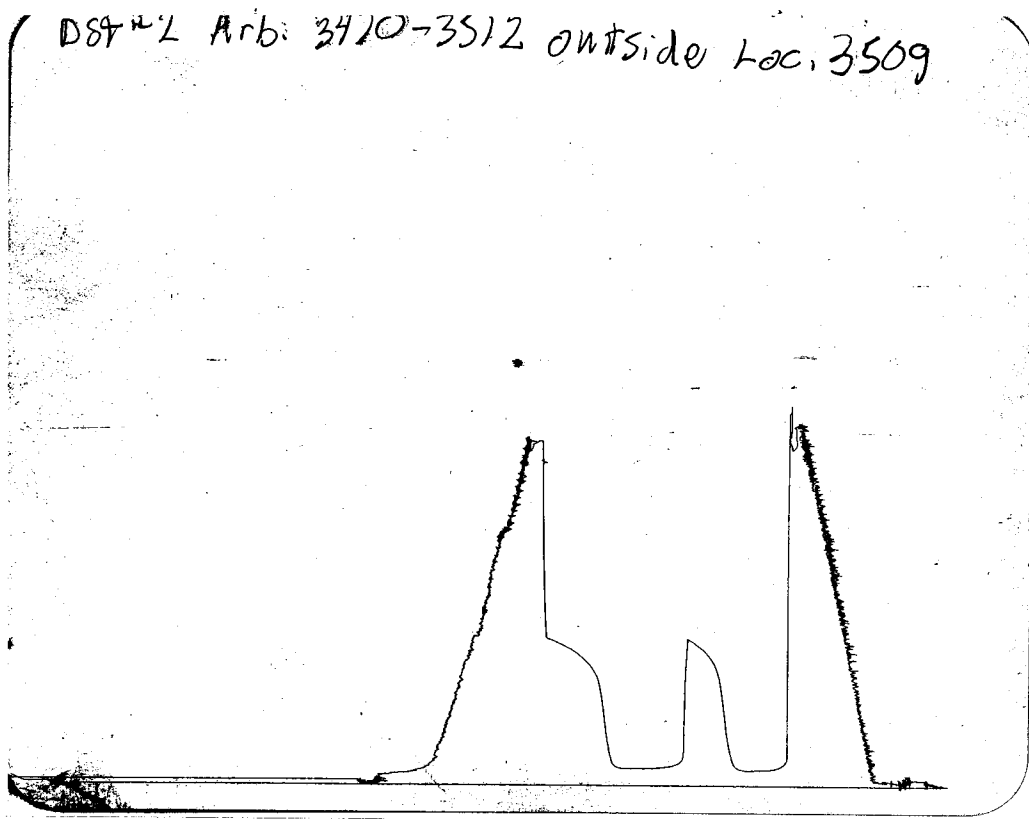
RECOVERED: 712' GIP  
30' GMCO 10%G / 40%M / 50%O  
62' GOCM 10%G / 20%O / 70%M  
92' OF FLUID TOTAL  
TOOL SMPL: 10%G / 45%M / 45%O

BATMAN 1-12  
 Formation: DST #2 ARBUCKLE 3470-3512  
 Job Number: P071

LD DRLG. CO.  
 DST #2 ARBUCKLE 3470-3512  
 Start Test Date: 2009/09/06  
 Final Test Date: 2009/09/06

# BATMAN 1-12





This is an actual photograph of recorder chart.

POINT	PRESSURE		PSI
	Field Reading	Elec. Office Reading	
(A) Initial Hydrostatic Mud	1725	1725	PSI
(B) First Initial Flow Pressure	27	27	PSI
(C) First Final Flow Pressure	42	42	PSI
(D) Initial Closed-in Pressure	753	753	PSI
(E) Second Initial Flow Pressure	48	48	PSI
(F) Second Final Flow Pressure	59	59	PSI
(G) Final Closed-in Pressure	746	746	PSI
(H) Final Hydrostatic Mud	1724	1724	PSI