



15-185-23363

1-215-13w

DIAMOND TESTING

P.O. Box 157
HOISINGTON, KANSAS 67544
(620) 653-7550 • (800) 542-7313
STC 21098.D253

Page 1 of 4 Pages

Company L. D. Drilling, Inc. Lease & Well No. Address Trust "A" No. 1-1
Elevation 1866KB Formation Lansing/Kansas City "A" - "E" Effective Pay -- Ft. Ticket No. 2132
Date 5-20-06 Sec. 1 Twp. 21S Range 13W County Stafford State Kansas

Test Approved By Roger Martin Diamond Representative Roger D. Friedly

Formation Test No. 1 Interval Tested from 3,230 ft. to 3,305 ft. Total Depth 3,305 ft.
Packer Depth 3,225 ft. Size 6 3/4 in. Packer Depth -- ft. Size -- in.
Packer Depth 3,230 ft. Size 6 3/4 in. Packer Depth -- ft. Size -- in.
Depth of Selective Zone Set ft.

Top Recorder Depth (Inside) 3,218 ft. Recorder Number 21098 Cap. 5,000 psi
Bottom Recorder Depth (Outside) 3,302 ft. Recorder Number 13387 Cap. 4,000 psi
Below Straddle Recorder Depth ft. Recorder Number Cap. psi

Drilling Contractor Sterling Drilling Company - Rig 1 Drill Collar Length 248 ft. I.D. 2 1/4 in.
Mud Type Chemical Viscosity 50 Weight Pipe Length -- ft. I.D. -- in.
Weight 8.8 Water Loss 8.8 cc. Drill Pipe Length 2,957 ft. I.D. 3 1/2 in.
Chlorides 3,000 P.P.M. Test Tool Length 25 ft. Tool Size 3 1/2 - IF in.
Jars: Make Bowen Serial Number Not Run Anchor Length 75 ft. Size 4 1/2 - FH in.
Did Well Flow? Yes Reversed Out Yes Surface Choke Size 1 in. Bottom Choke Size 5/8 in.
Main Hole Size 7 7/8 in. Tool Joint Size 4 1/2 - XH in.

Blow: 1st Open: Strong blow. Off bottom of bucket in 45 secs. Gas to surface in 6 mins. Strong blow back off bottom of bucket during shut-in. (SEE GAS VOLUME REPORT.)
2nd Open: Strong blow. Off bottom of bucket in 1 1/2 mins. Oil to surface in 37 mins. Strong blow back off bottom of bucket during shut-in. (SEE GAS VOLUME REPORT.)

Recovered 3,081 ft. of gassy oil = 42.599480 bbls. (Grind out: 10%-gas; 90%-oil) Gravity: 33 @ 60°
Recovered 62 ft. of gas cut oily mud = .305040 bbls. (Grind out: 10%-gas; 41%-oil; 49%-mud)
Recovered 62 ft. of slightly gas & water cut muddy oil = .305040 bbls. (Grind out: 6%-gas; 11%-water; 25%-mud; 58%-oil)
Recovered 3,205 ft. of TOTAL FLUID = 15.768600 bbls.

Recovered ft. of
Remarks Tool Sample Grind Out: Blew out; mostly all oil

Time Set Packer(s) 7:30 A.M. R.M. Time Started Off Bottom 11:00 A.M. R.M. Maximum Temperature 106°
Initial Hydrostatic Pressure (A) 1464 P.S.I.
Initial Flow Period Minutes 30 (B) 161 P.S.I. to (C) 457 P.S.I.
Initial Closed In Period Minutes 45 (D) 1077 P.S.I.
Final Flow Period Minutes 45 (E) 488 P.S.I. to (F) 734 P.S.I.
Final Closed In Period Minutes 90 (G) 1056 P.S.I.
Final Hydrostatic Pressure (H) 1458 P.S.I.



DIAMOND TESTING
P. O. Box 157
HOISINGTON, KANSAS 67544
(800) 542-7313

FLUID SAMPLE DATA

Company L. D. Drilling, Inc.
Lease & Well No. Andress Trust "A" No. 1-1
Date 5-20-06 Sec. 1 Twp. 21 S Range 13 W
Formation Test No. 1 Interval Tested From 3,230 ft. to 3,305 ft. Total Depth 3,305 ft.
Formation Lansing/Kansas City "A" - "E"

	<u>MUD PIT</u>	<u>RECOVERY</u>
Viscosity	<u>50</u> CP	<u>--</u> CP
Weight	<u>8.8</u>	<u>--</u>
Water Loss	<u>8.8</u> CC	<u>--</u> CC
PH Factor	<u>10.5</u>	<u>--</u>

	<u>RESISTIVITY</u>	<u>CHLORIDE CONTENT</u>
Recovery Water	<u>-- @ -- °F.</u>	<u>-- ppm</u>
Recovery Mud	<u>-- @ -- °F.</u>	<u>-- ppm</u>
Recovery Mud Filtrate	<u>-- @ -- °F.</u>	<u>-- ppm</u>
Mud Pit Sample	<u>1.20 @ 58 °F.</u>	<u>6,200 ppm</u>
Mud Pit Sample Filtrate	<u>1.35 @ 62 °F.</u>	<u>5,000 ppm</u>

Sample Taken By ROGER D. FRIEDLY

Witness By ROGER MARTIN

Remarks Pit filtrate triton dish chlorides were 3,000 Ppm



DIAMOND TESTING
 P.O. Box 157
HOISINGTON, KANSAS 67544
 (620) 653-7550 • (800) 542-7313
GAS VOLUME REPORT

Company L. D. Drilling, Inc. Lease & Well No. Address Trust "A" No. 1-1
 Date 5-20-06 Sec. 1 Twp. 21 S Rge. 13 W Location 1465' FNL & 1868' FWL, SEC County Stafford State KS
 Drilling Contractor Sterling Drilling Company - Rig 1 Formation Lansing/Kansas City "A" - "E" DST No. 1
 Remarks: 1st Open: Gas to surface in 6 mins. Burned nicely.

INITIAL FLOW

Open Tool: 7:30 a.m.

Time O'Clock	Orifice Size	Gauge	CF/D
7:40 a.m.	½ in.	3½ psi	17,100
7:45 a.m.	½ in.	4½ psi	19,500
7:50 a.m.	½ in.	3 psi	15,700
7:55 a.m.	½ in.	2 psi	12,700
8:00 a.m.	½ in.	1½ psi	11,020

FINAL FLOW

Open Tool: 8:45 a.m.

Time O'Clock	Orifice Size	Gauge	CF/D
8:50 a.m.	1/8 in.	½ psi	1,700
8:55 a.m.	1/8 in.	1½ psi	3,390
9:00 a.m.	1/8 in.	3½ psi	5,260
9:05 a.m.	1/8 in.	5 psi	6,390
9:10 a.m.	1/8 in.	6½ psi	7,370
9:15 a.m.	1/8 in.	8-9 psi	8,300 8,890
9:20 a.m.	1/8 in.	10-11 psi	9,450 10,000
9:25 a.m.	1/8 in.	11-12 psi	10,000 10,500
9:30 a.m.	1/8 in.	-- psi	--

GENERAL INFORMATION

Client Information:

Company: L.D. DRILLING, INC.

Contact: L.D. DAVIS

Phone: Fax: e-mail:

Site Information:

Contact: ROGER MARTIN

Phone: Fax: e-mail:

Well Information:

Name: ANDRESS TRUST 'A' #1-1

Operator: L.D. DRILLING, INC.

Location-Downhole: DST #1 LKC 'A-E' 3,230' - 3,305'

Location-Surface: SEC 1-21S-13W STAFFORD COUNTY

Test Information:

Company: DIAMOND TESTING

Representative: ROGER D. FRIEDLY

Supervisor: ROGER MARTIN

Test Type: CONVENTIONAL Job Number:

Test Unit: NO. 1

Start Date: 2006/05/20 Start Time: 05:12:00

End Date: 2006/05/20 End Time: 14:46:00

Report Date: Prepared By:

Remarks: Qualified By:

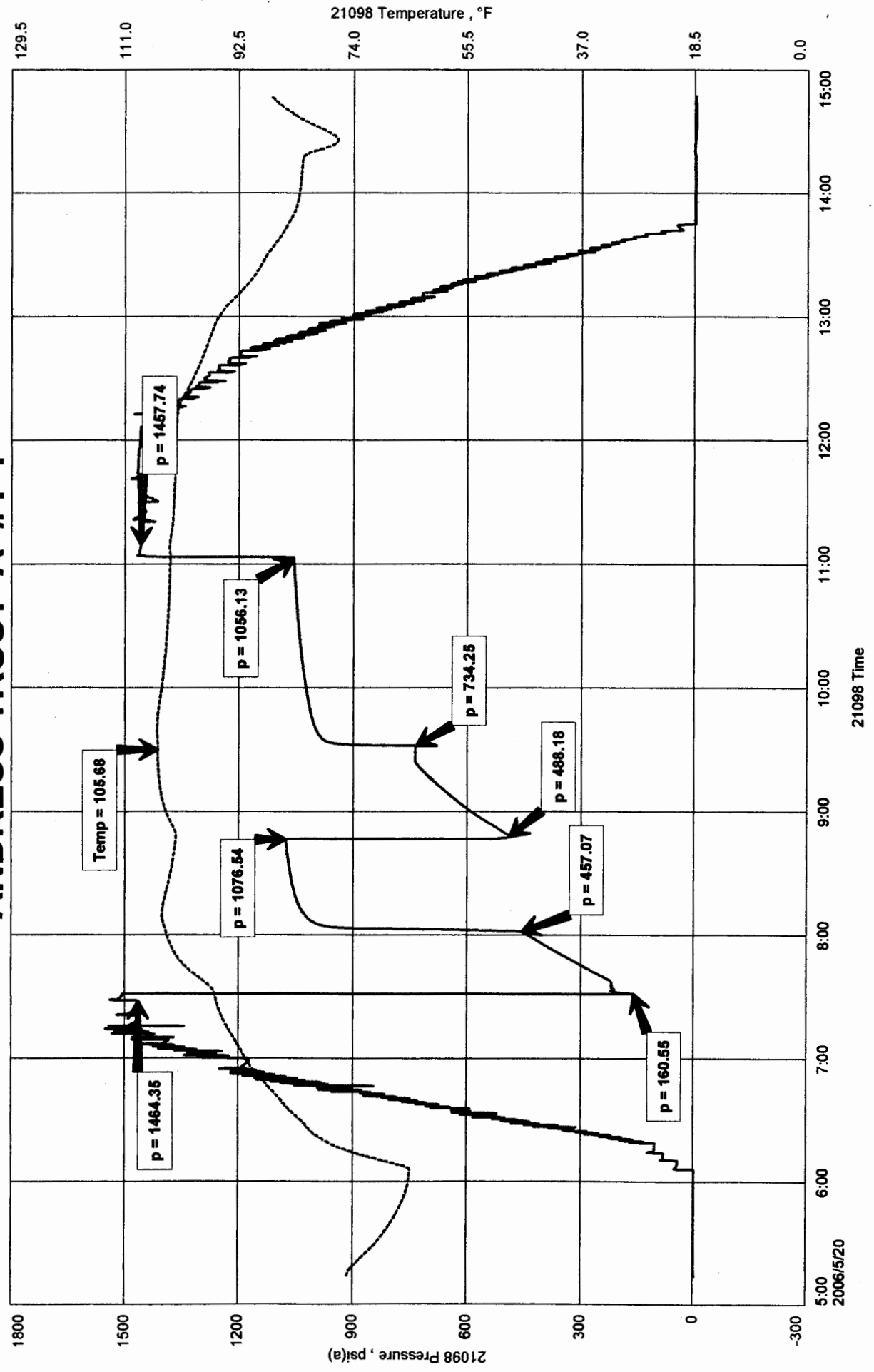
RECOVERED: 3,081 CLEAN OIL 10% GAS, 90 % OIL
62' GCOM 10% GAS, 41% OIL 49% MUD
62' SLTG&WCMO 6% GAS, 11% WTR, 25% MUD, 58% OIL
3,205' TOTAL FLUID

TOOL SAMPLE: BLEW OUT: MOSTLY ALL OIL

L.D. DRILLING, INC.
 DST #1 LKC 'A-E' 3,230' - 3,305'
 Start Test Date: 2006/05/20
 Final Test Date: 2006/05/20

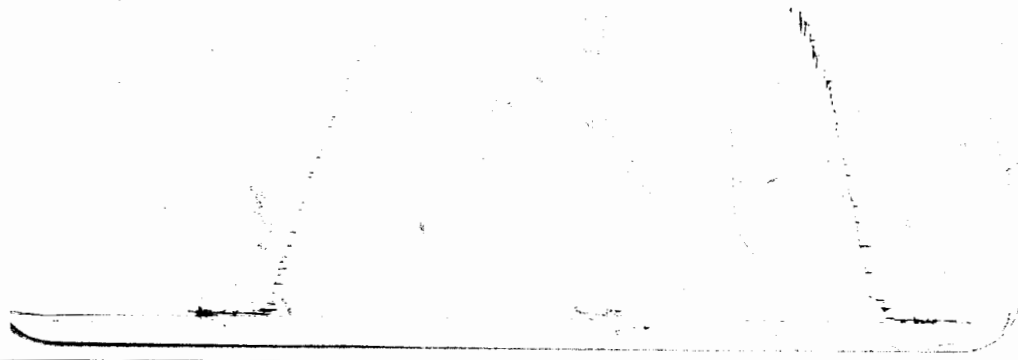
ADDRESS TRUST 'A' #1-1
 Formation: DST #1 LKC 'A-E' 3,230' - 3,305'
 Pool: WILDCAT

ADDRESS TRUST 'A' #1-1



DST # 1 OUTSIDE 13387
LRC A-E

3230-3305
LDL 3302



This is an actual photograph of recorder chart.

POINT	PRESSURE		PSI
	Field Reading	Elec. Office Reading	
(A) Initial Hydrostatic Mud	1464	1464	PSI
(B) First Initial Flow Pressure	161	161	PSI
(C) First Final Flow Pressure	457	457	PSI
(D) Initial Closed-in Pressure	1077	1077	PSI
(E) Second Initial Flow Pressure	488	488	PSI
(F) Second Final Flow Pressure	734	734	PSI
(G) Final Closed-in Pressure	1056	1056	PSI
(H) Final Hydrostatic Mud	1458	1458	PSI



DIAMOND TESTING

P.O. Box 157
HOISINGTON, KANSAS 67544
(620) 653-7550 • (800) 542-7313
STC 21098.D254

Company L. D. Drilling, Inc. Lease & Well No. Address Trust "A" No. 1-1
Elevation 1866KB Formation Lansing/Kansas City "F" Effective Pay Ft. Ticket No. 2133
Date 5-21-06 Sec. 1 Twp. 21S Range 13W County Stafford State Kansas
Test Approved By Roger Martin Diamond Representative Roger D. Friedly

Formation Test No. 2 Interval Tested from 3,304 ft. to 3,320 ft. Total Depth 3,320 ft.
Packer Depth 3,299 ft. Size 6 3/4 in. Packer Depth ft. Size in.
Packer Depth 3,304 ft. Size 6 3/4 in. Packer Depth ft. Size in.
Depth of Selective Zone Set ft.

Top Recorder Depth (Inside) 3,292 ft. Recorder Number 21098 Cap. 5,000 psi
Bottom Recorder Depth (Outside) 3,317 ft. Recorder Number 13387 Cap. 4,000 psi
Below Straddle Recorder Depth ft. Recorder Number Cap. psi

Drilling Contractor Sterling Drilling Company - Rig 1 Drill Collar Length 248 ft. I.D. 2 1/4 in.
Mud Type Chemical Viscosity 46 Weight Pipe Length ft. I.D. in.
Weight 8.6 Water Loss 8.0 cc. Drill Pipe Length 3,031 ft. I.D. 3 1/2 in.
Chlorides 3,000 P.P.M. Test Tool Length 25 ft. Tool Size 3 1/2 - IF in.
Jars: Make Bowen Serial Number Not Run Anchor Length 16 ft. Size 4 1/2 - FH in.
Did Well Flow? No Reversed Out No Surface Choke Size 1 in. Bottom Choke Size 5/8 in.
Main Hole Size 7 7/8 in. Tool Joint Size 4 1/2 - XH in.

Blow: 1st Open: Weak, 1/2 in., blow increasing. Off bottom of bucket in 4 1/2 mins. Fair, 1 in., blow back during shut-in.
2nd Open: Strong blow. Off bottom of bucket immediately. Gas to surface in 30 mins. Too small to measure. Weak, 1/2 in., blow back during shut-in.

Recovered 197 ft. of clean oil = .969240 bbls. (Gravity: 24.4 @ 60°)
Recovered 51 ft. of gas cut muddy oil = .250920 bbls. (Grind out: 9%-gas; 43%-mud; 48%-oil)
Recovered 248 ft. of TOTAL FLUID = 1.220160 bbls.
Recovered ft. of
Recovered ft. of
Remarks Tool Sample Grind Out: 2%-gas; 2%-water; 25%-mud; 71%-oil

Time Set Packer(s) 1:34 A.M. PM Time Started Off Bottom 4:34 A.M. PM Maximum Temperature 101°
Initial Hydrostatic Pressure (A) 1488 P.S.I.
Initial Flow Period Minutes 30 (B) 9 P.S.I. to (C) 46 P.S.I.
Initial Closed In Period Minutes 45 (D) 949 P.S.I.
Final Flow Period Minutes 45 (E) 45 P.S.I. to (F) 83 P.S.I.
Final Closed In Period Minutes 60 (G) 937 P.S.I.
Final Hydrostatic Pressure (H) 1487 P.S.I.



DIAMOND TESTING
P. O. Box 157
HOISINGTON, KANSAS 67544
(800) 542-7313

FLUID SAMPLE DATA

Company L. D. Drilling, Inc.

Lease & Well No. Andress Trust "A" No. 1-1

Date 5-21-06 Sec. 1 Twp. 21 S Range 13 W

Formation Test No. 2 Interval Tested From 3,304 ft. to 3,320 ft. Total Depth 3,320 ft.

Formation Lansing/Kansas City "F"

	<u>MUD PIT</u>	<u>RECOVERY</u>
Viscosity	<u>46</u> CP	<u>--</u> CP
Weight	<u>8.6</u>	<u>--</u>
Water Loss	<u>8.0</u> CC	<u>--</u> CC
PH Factor	<u>9.0</u>	<u>--</u>

	RESISTIVITY	CHLORIDE CONTENT
Recovery Water	<u>--</u> @ <u>--</u> °F.	<u>--</u> ppm
Recovery Mud	<u>--</u> @ <u>--</u> °F.	<u>--</u> ppm
Recovery Mud Filtrate	<u>--</u> @ <u>--</u> °F.	<u>--</u> ppm
Mud Pit Sample	<u>1.30</u> @ <u>56</u> °F.	<u>6,000</u> ppm
Mud Pit Sample Filtrate	<u>1.45</u> @ <u>58</u> °F.	<u>5,000</u> ppm

Sample Taken By ROGER D. FRIEDLY

Witness By ROGER MARTIN

Remarks Pit filtrate triton dish chlorides were 3,000 Ppm

GENERAL INFORMATION

Client Information:

Company: L.D. DRILLING, INC.

Contact: L.D. DAVIS

Phone: Fax: e-mail:

Site Information:

Contact: ROGER MARTIN

Phone: Fax: e-mail:

Well Information:

Name: ANDRESS TRUST 'A' #1-1

Operator: L.D. DRILLING, INC.

Location-Downhole: DST #2 LKC 'F' 3,304' - 3,320'

Location-Surface: SEC 1-21S-13W STSFFORD COUNTY

Test Information:

Company: DIAMOND TESTING

Representative: ROGER D. FRIEDLY

Supervisor: ROGER MARTIN

Test Type: CONVENTIONAL Job Number:

Test Unit: NO. 1

Start Date: 2006/05/20 Start Time: 23:35:00

End Date: 2006/05/21 End Time: 07:34:00

Report Date: Prepared By:

Remarks: Qualified By:

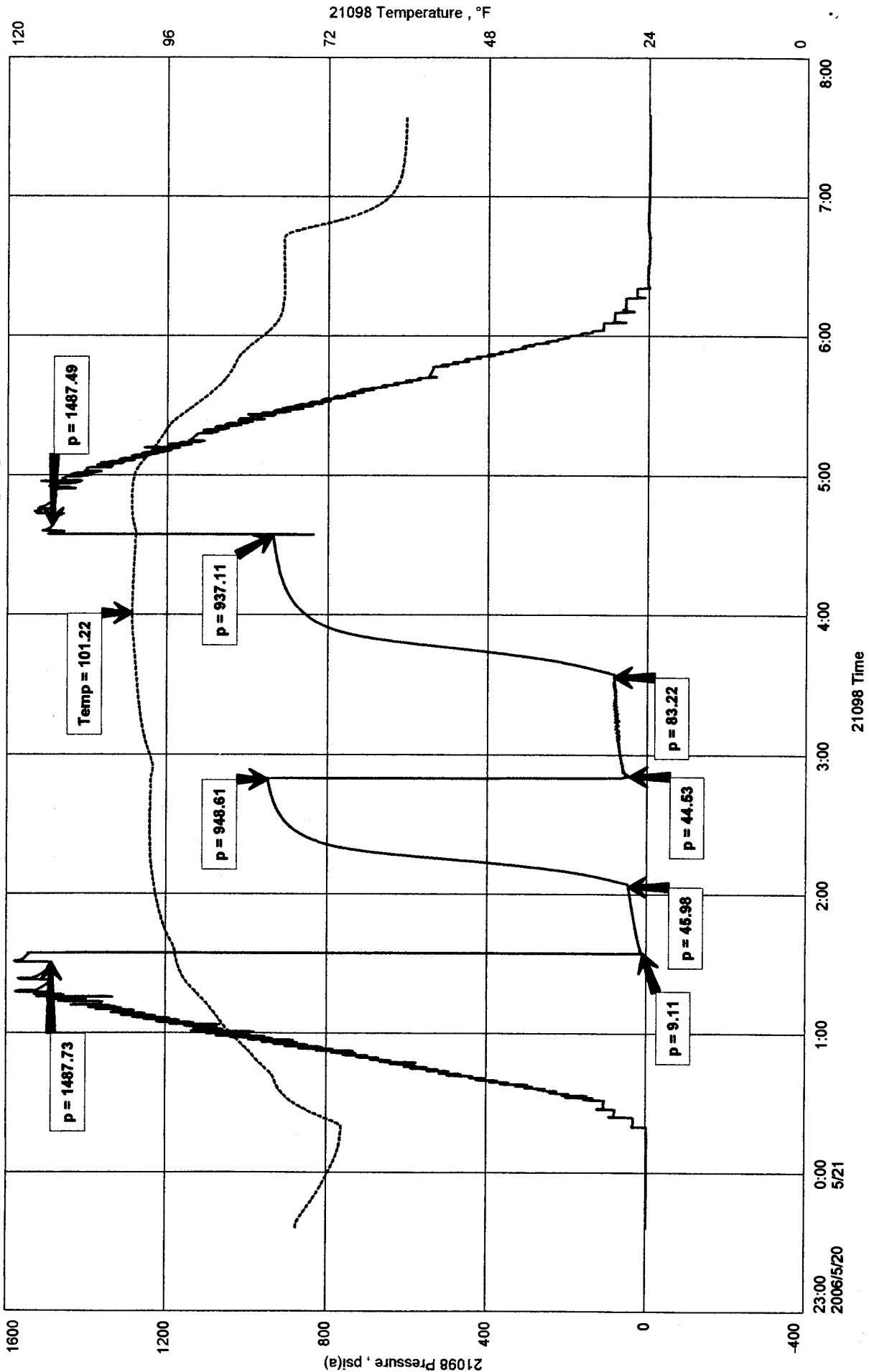
RECOVERED: GAS TO SURFACE ON FINAL GFLOW 30 MIN TSTM
197' CO 24.4 GRAVITY @ 60 deg>
51' GCMO 9% GAS, 43% MUD, 48% OIL
248' TOTAL FLUID

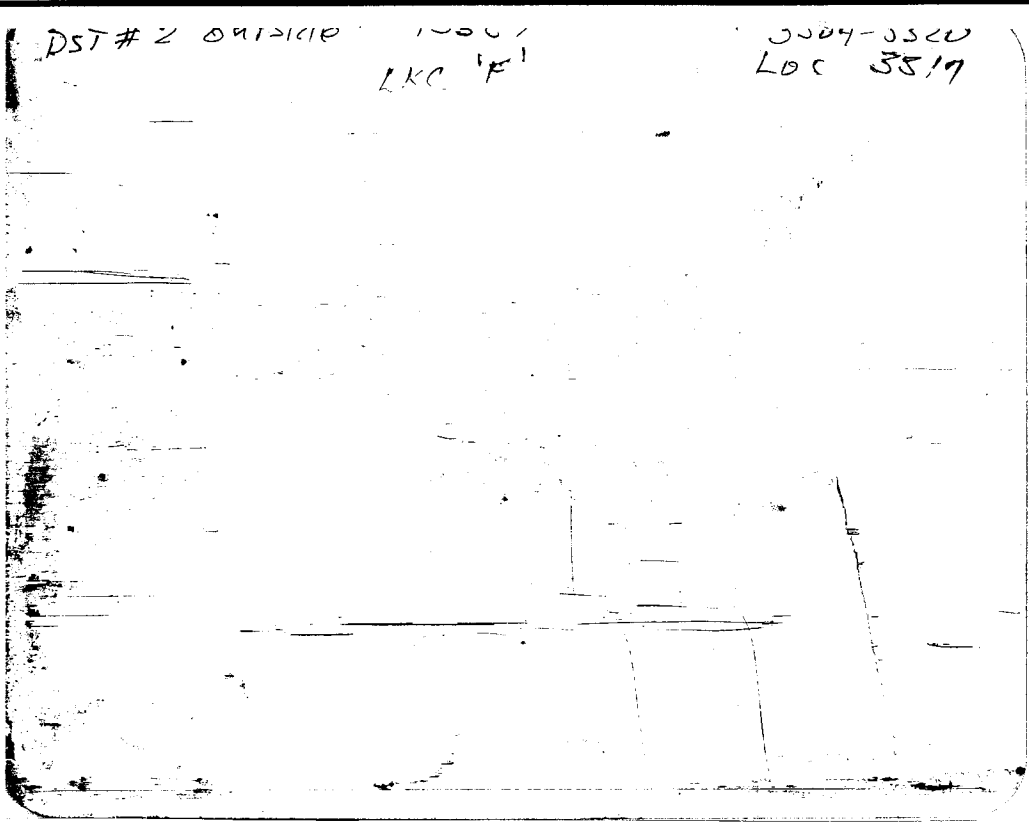
TOOL SAMPLE: 2% GAS, 2% WTR, 25% MUD, 71% OIL

L.D. DRILLING, INC.
 DST #2 LKC 'F' 3,304' - 3,320'
 Start Test Date: 2006/05/20
 Final Test Date: 2006/05/21

ANDRESS TRUST 'A' #1-1
 Formation: DST #2 LKC 'F' 3,304' - 3,320'
 Pool: WILDCAT

ANDRESS TRUST 'A' #1-1





This is an actual photograph of recorder chart.

POINT	PRESSURE		Elec. Office Reading	PSI
	Field Reading			
(A) Initial Hydrostatic Mud	1488		1488	PSI
(B) First Initial Flow Pressure	9		9	PSI
(C) First Final Flow Pressure	46		46	PSI
(D) Initial Closed-in Pressure	949		949	PSI
(E) Second Initial Flow Pressure	45		45	PSI
(F) Second Final Flow Pressure	83		83	PSI
(G) Final Closed-in Pressure	937		937	PSI
(H) Final Hydrostatic Mud	1487		1487	PSI



DIAMOND TESTING

P.O. Box 157
HOISINGTON, KANSAS 67544
(620) 653-7550 • (800) 542-7313
STC 21098.D255

Company L. D. Drilling, Inc. Lease & Well No. Address Trust "A" No. 1-1
Elevation 1866KB Formation Lansing/Kansas City "G" Effective Pay -- Ft. Ticket No. 2134
Date 5-21-06 Sec. 1 Twp. 21S Range 13W County Stafford State Kansas
Test Approved By Roger Martin Diamond Representative Roger D. Friedly

Formation Test No. 3 Interval Tested from 3,318 ft. to 3,331 ft. Total Depth 3,331 ft.
Packer Depth 3,313 ft. Size 6 3/4 in. Packer Depth -- ft. Size -- in.
Packer Depth 3,318 ft. Size 6 3/4 in. Packer Depth -- ft. Size -- in.
Depth of Selective Zone Set ft.

Top Recorder Depth (Inside) 3,306 ft. Recorder Number 21098 Cap. 5,000 psi
Bottom Recorder Depth (Outside) 3,328 ft. Recorder Number 13387 Cap. 4,000 psi
Below Straddle Recorder Depth ft. Recorder Number Cap. psi

Drilling Contractor Sterling Drilling Company - Rig 1 Drill Collar Length 248 ft. I.D. 2 1/4 in.
Mud Type Chemical Viscosity 56 Weight Pipe Length -- ft. I.D. -- in.
Weight 8.6 Water Loss 8.8 cc. Drill Pipe Length 3,045 ft. I.D. 3 1/2 in.
Chlorides 3,600 P.P.M. Test Tool Length 25 ft. Tool Size 3 1/2 - IF in.
Jars: Make Bowen Serial Number Not Run Anchor Length 13 ft. Size 4 1/2 - FH in.
Did Well Flow? No Reversed Out No Surface Choke Size 1 in. Bottom Choke Size 5/8 in.
Main Hole Size 7 7/8 in. Tool Joint Size 4 1/2 - XH in.

Blow: 1st Open: Weak, 1/2 in., blow. Increasing to 9 ins. No blow back during shut-in.
2nd Open: Weak surface blow. Increasing to 4 1/2 ins. No blow back during shut-in.

Recovered 60 ft. of gas in pipe
Recovered 50 ft. of gas & oil cut muddy water = .246000 bbls. (Grind out: 10%-gas; 10%-oil; 26%-mud; 54%-water)
Recovered 62 ft. of oil & gas cut watery mud = .305040 bbls. (Grind out: 6%-oil; 16%-gas; 37%-water; 41%-mud)
Recovered 124 ft. of oil & mud cut gassy water = .610080 bbls. (Grind out: 4%-oil; 17%-mud; 18%-gas; 61%-water)
Recovered 236 ft. of TOTAL FLUID = 1.161120 bbls.
Remarks Tool Sample Grind Out: 2%-gas; 2%-mud; 4%-oil; 92%-water

Time Set Packer(s) 5:00 ~~XXX~~ P.M. Time Started Off Bottom 7:15 ~~XXX~~ P.M. Maximum Temperature 104°
Initial Hydrostatic Pressure (A) 1489 P.S.I.
Initial Flow Period Minutes 30 (B) 10 P.S.I. to (C) 64 P.S.I.
Initial Closed In Period Minutes 45 (D) 679 P.S.I.
Final Flow Period Minutes 30 (E) 67 P.S.I. to (F) 113 P.S.I.
Final Closed In Period Minutes 30 (G) 501 P.S.I.
Final Hydrostatic Pressure (H) 1487 P.S.I.



DIAMOND TESTING
P. O. Box 157
HOISINGTON, KANSAS 67544
(800) 542-7313

FLUID SAMPLE DATA

Company L. D. Drilling, Inc.

Lease & Well No. Address Trust "A" No. 1-1

Date 5-21-06 Sec. 1 Twp. 21 S Range 13 W

Formation Test No. 3 Interval Tested From 3,318 ft. to 3,331 ft. Total Depth 3,331 ft.

Formation Lansing/Kansas City "G"

	<u>MUD PIT</u>	<u>RECOVERY</u>	<u>RECOVERY</u>
Viscosity	<u>56</u> CP	<u>--</u> CP	
Weight	<u>8.6</u>	<u>--</u>	
Water Loss	<u>8.8</u> CC	<u>--</u> CC	
PH Factor	<u>10.0</u>	<u>--</u>	<u>Water</u> <u>7.0</u>

	<u>RESISTIVITY</u>	<u>CHLORIDE CONTENT</u>
Recovery Water	<u>.01 @ 80 °F.</u>	<u>70,000 ppm</u>
Recovery Mud	<u>-- @ -- °F.</u>	<u>-- ppm</u>
Recovery Mud Filtrate	<u>-- @ -- °F.</u>	<u>-- ppm</u>
Mud Pit Sample	<u>1.20 @ 76 °F.</u>	<u>4,800 ppm</u>
Mud Pit Sample Filtrate	<u>1.35 @ 80 °F.</u>	<u>4,000 ppm</u>

Sample Taken By ROGER D. FRIEDLY

Witness By ROGER MARTIN

Remarks Pit filtrate triton dish chlorides were 3,600 Ppm
Recovery water dish chlorides were 85,000 Ppm

GENERAL INFORMATION

Client Information:

Company: L.D. DRILLING, INC.

Contact: L.D. DAVIS

Phone: Fax: e-mail:

Site Information:

Contact: ROGER MARTIN

Phone: Fax: e-mail:

Well Information:

Name: ANDRESS TRUST 'A' #1-1

Operator: L.D. DRILLING, INC.

Location-Downhole: DST #3 LKC 'G' 3,318' - 3,331'

Location-Surface: SEC 1-21S-13W STAFFORD COUNTY

Test Information:

Company: DIAMOND TESTING

Representative: ROGER D. FRIEDLY

Supervisor: ROGER MARTIN

Test Type: CONVENTIONAL Job Number:

Test Unit: NO. 1

Start Date: 2006/05/21 Start Time: 14:10:00

End Date: 2006/05/21 End Time: 21:58:00

Report Date: Prepared By:

Remarks: Qualified By:

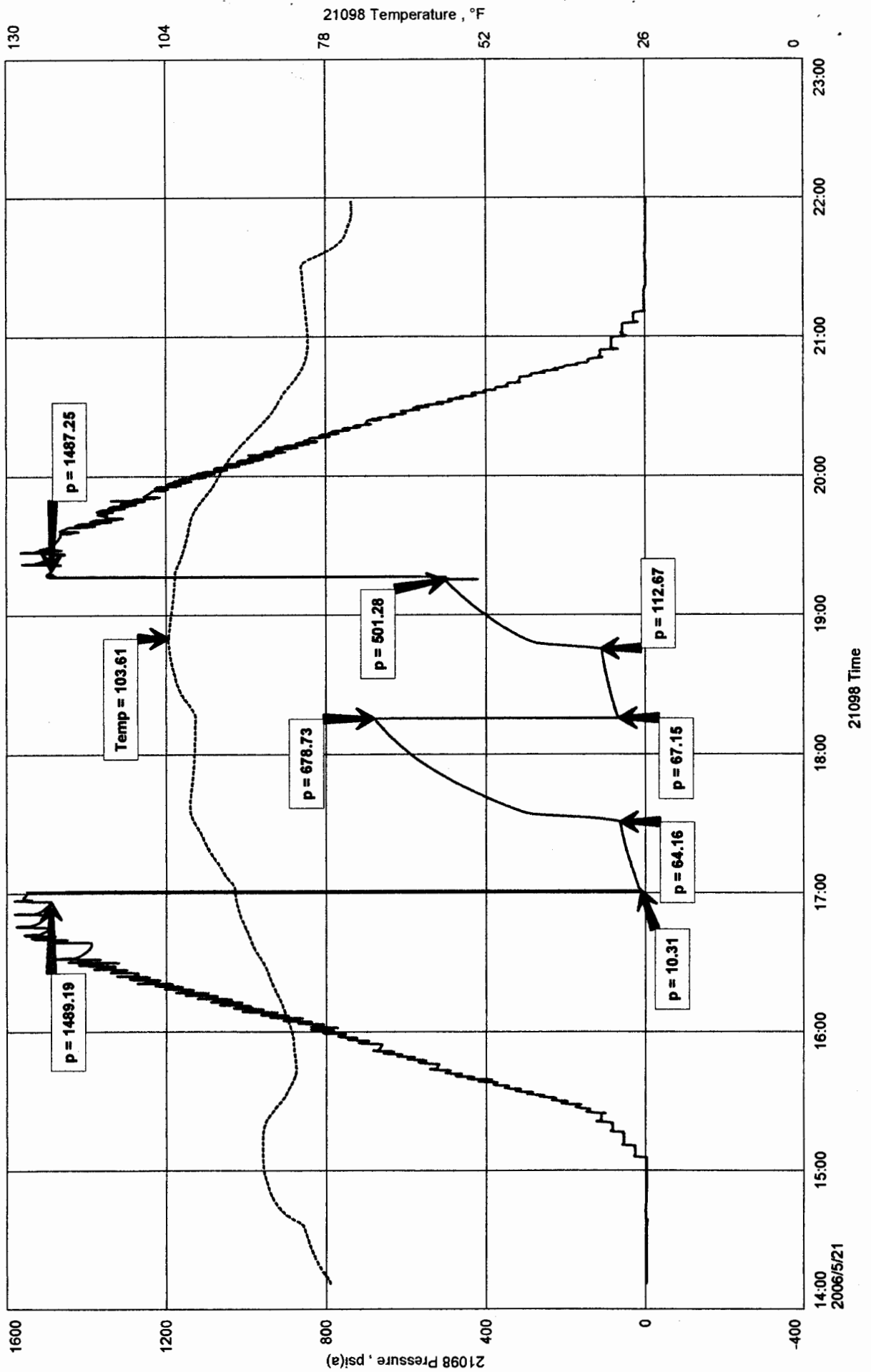
RECOVERED: 60' GAS IN PIPE
50' G&OCMW 10% GAS, 10% OIL, 26% MUD, 54% WTR
62' O&GCWM 6% OIL, 16% GAS, 37% WTR, 41% MUD
124' O&MCGW 4% OIL, 17% MUDM 18% GAS, 61% WTR
236' TOTAL FLUID

TOOL SAMPLE: 2% GAS, 2% MUD, 4% OIL, 92% WTR

ANDRESS TRUST 'A' #1-1
 Formation: DST #3 LKC 'G' 3,318' - 3,331'
 Pool: WILDCAT

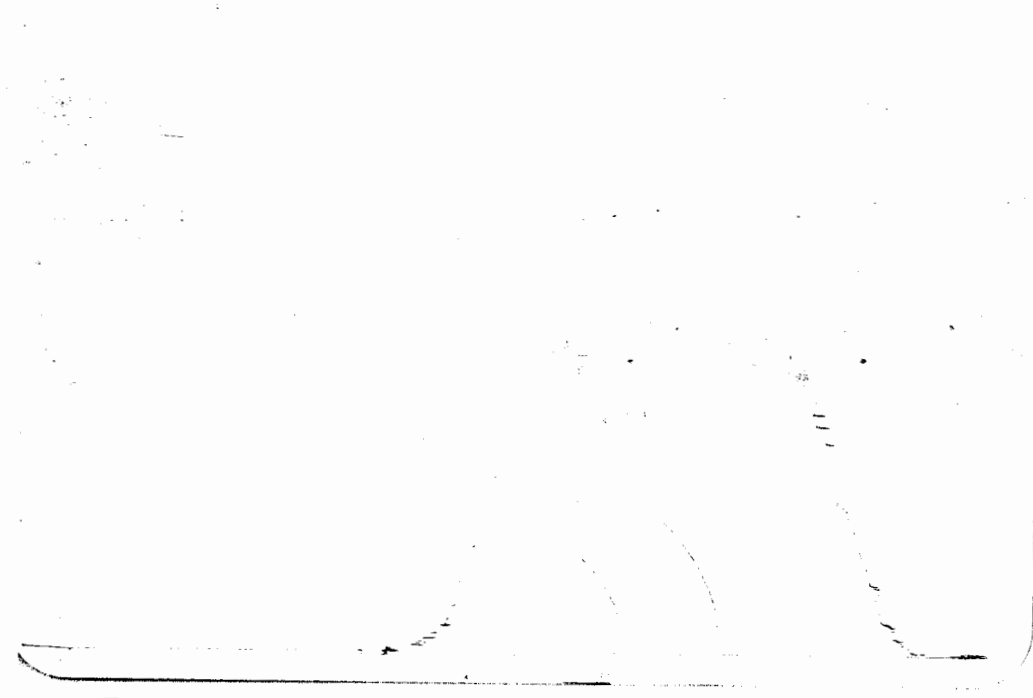
L.D. DRILLING, INC.
 DST #3 LKC 'G' 3,318' - 3,331'
 Start Test Date: 2006/05/21
 Final Test Date: 2006/05/21

ANDRESS TRUST 'A' #1-1



DST # 3 outside 13387
LKC 'G'

3318-3331
LOC 3328



This is an actual photograph of recorder chart.

POINT	PRESSURE		PSI
	Field Reading	Elec. Office Reading	
(A) Initial Hydrostatic Mud	1489	1489	PSI
(B) First Initial Flow Pressure	10	10	PSI
(C) First Final Flow Pressure	64	64	PSI
(D) Initial Closed-in Pressure	679	679	PSI
(E) Second Initial Flow Pressure	67	67	PSI
(F) Second Final Flow Pressure	113	113	PSI
(G) Final Closed-in Pressure	501	501	PSI
(H) Final Hydrostatic Mud	1487	1487	PSI

COMPANY
LEASE AND WELL NO



DIAMOND TESTING

P.O. Box 157
HOISINGTON, KANSAS 67544
(620) 653-7550 • (800) 542-7313
STC 21098.D 256

Company L. D. Drilling, Inc. Lease & Well No. Address Trust "A" No. 1-1
Elevation 1866KB Formation Lansing/Kansas City "H" - "I" Effective Pay Ft. Ticket No. 2135
Date 5-22-06 Sec. 1 Twp. 21S Range 13W County Stafford State Kansas
Test Approved By Roger Martin Diamond Representative Roger D. Friedly

Formation Test No. 4 Interval Tested from 3,352 ft. to 3,390 ft. Total Depth 3,390 ft.
Packer Depth 3,347 ft. Size 6 3/4 in. Packer Depth ft. Size in.
Packer Depth 3,352 ft. Size 6 3/4 in. Packer Depth ft. Size in.
Depth of Selective Zone Set ft.

Top Recorder Depth (Inside) 3,340 ft. Recorder Number 21098 Cap. 5,000 psi
Bottom Recorder Depth (Outside) 3,387 ft. Recorder Number 13387 Cap. 4,000 psi
Below Straddle Recorder Depth ft. Recorder Number Cap. psi

Drilling Contractor Sterling Drilling Company - Rig 1 Drill Collar Length 248 ft. I.D. 2 1/4 in.
Mud Type Chemical Viscosity 50 Weight Pipe Length ft. I.D. in.
Weight 8.8 Water Loss 10.0 cc. Drill Pipe Length 3,079 ft. I.D. 3 1/2 in.
Chlorides 9,000 P.P.M. Test Tool Length 25 ft. Tool Size 3 1/2 - JF in.
Jars: Make Bowen Serial Number Not Run Anchor Length 38 ft. Size 4 1/2 - FH in.
Did Well Flow? No Reversed Out No Surface Choke Size 1 in. Bottom Choke Size 5/8 in.
Main Hole Size 7 7/8 in. Tool Joint Size 4 1/2 - XH in.

Blow: 1st Open: Good, 3 in., blow increasing. Off bottom of bucket in 1 1/2 mins. Weak, 1/2 in., blow back during shut-in.
2nd Open: Good, 3 in., blow increasing. Off bottom of bucket in 2 1/2 mins. Good, 3 in., blow back during shut-in.
Gas to surface on final shut-in.

Recovered 60 ft. of slightly water & gas cut muddy oil = .852000 bbls. (Grind out: 7%-water; 10%-gas; 26%-mud; 57%-oil)
Recovered 62 ft. of slightly water & mud cut gassy oil = .880400 bbls. (Grind out: 7%-water; 7%-mud; 34%-gas; 52%-oil)
Recovered 186 ft. of slightly mud & water cut gassy oil = 1.490480 bbls. (Grind out: 7%-mud; 10%-water; 38%-gas; 45%-oil)
Recovered 62 ft. of slightly mud & water cut gassy oil = .305040 bbls. (Grind out: 3%-mud; 14%-water; 28%-gas; 55%-oil)
Recovered 62 ft. of mud & water cut oily gas = .305040 bbls. (Grind out: 13%-mud; 15%-water; 28%-oil; 44%-gas)
Recovered 432 ft. of TOTAL FLUID = 3.832960 bbls.

Remarks Tool Sample Grind Out: Blew out.

Time Set Packer(s) 10:48 ~~P.M.~~ ^{A.M.} Time Started Off Bottom 1:48 ~~P.M.~~ ^{X.M.} Maximum Temperature 102°
Initial Hydrostatic Pressure 1529 P.S.I. (A)
Initial Flow Period 30 Minutes (B) 58 P.S.I. to (C) 112 P.S.I.
Initial Closed In Period 45 Minutes (D) 612 P.S.I.
Final Flow Period 45 Minutes (E) 127 P.S.I. to (F) 172 P.S.I.
Final Closed In Period 60 Minutes (G) 553 P.S.I.
Final Hydrostatic Pressure 1528 P.S.I. (H)



DIAMOND TESTING
P. O. Box 157
HOISINGTON, KANSAS 67544
(800) 542-7313

FLUID SAMPLE DATA

Company L. D. Drilling, Inc.
Lease & Well No. Andress Trust "A" No. 1-1
Date 5-22-06 Sec. 1 Twp. 21 S Range 13 W
Formation Test No. 4 Interval Tested From 3,352 ft. to 3,390 ft. Total Depth 3,390 ft.
Formation Lansing/Kansas City "H" - "I"

	<u>MUD PIT</u>	<u>RECOVERY</u>
Viscosity	<u>50</u> CP	<u>--</u> CP
Weight	<u>8.8</u>	<u>--</u>
Water Loss	<u>10.0</u> CC	<u>--</u> CC
PH Factor	<u>10.5</u>	<u>--</u>

	<u>RESISTIVITY</u>	<u>CHLORIDE CONTENT</u>
Recovery Water	<u>-- @ -- °F.</u>	<u>--</u> ppm
Recovery Mud	<u>-- @ -- °F.</u>	<u>--</u> ppm
Recovery Mud Filtrate	<u>-- @ -- °F.</u>	<u>--</u> ppm
Mud Pit Sample	<u>.55 @ 82 °F.</u>	<u>11,000</u> ppm
Mud Pit Sample Filtrate	<u>.60 @ 86 °F.</u>	<u>12,000</u> ppm

Sample Taken By ROGER D. FRIEDLY

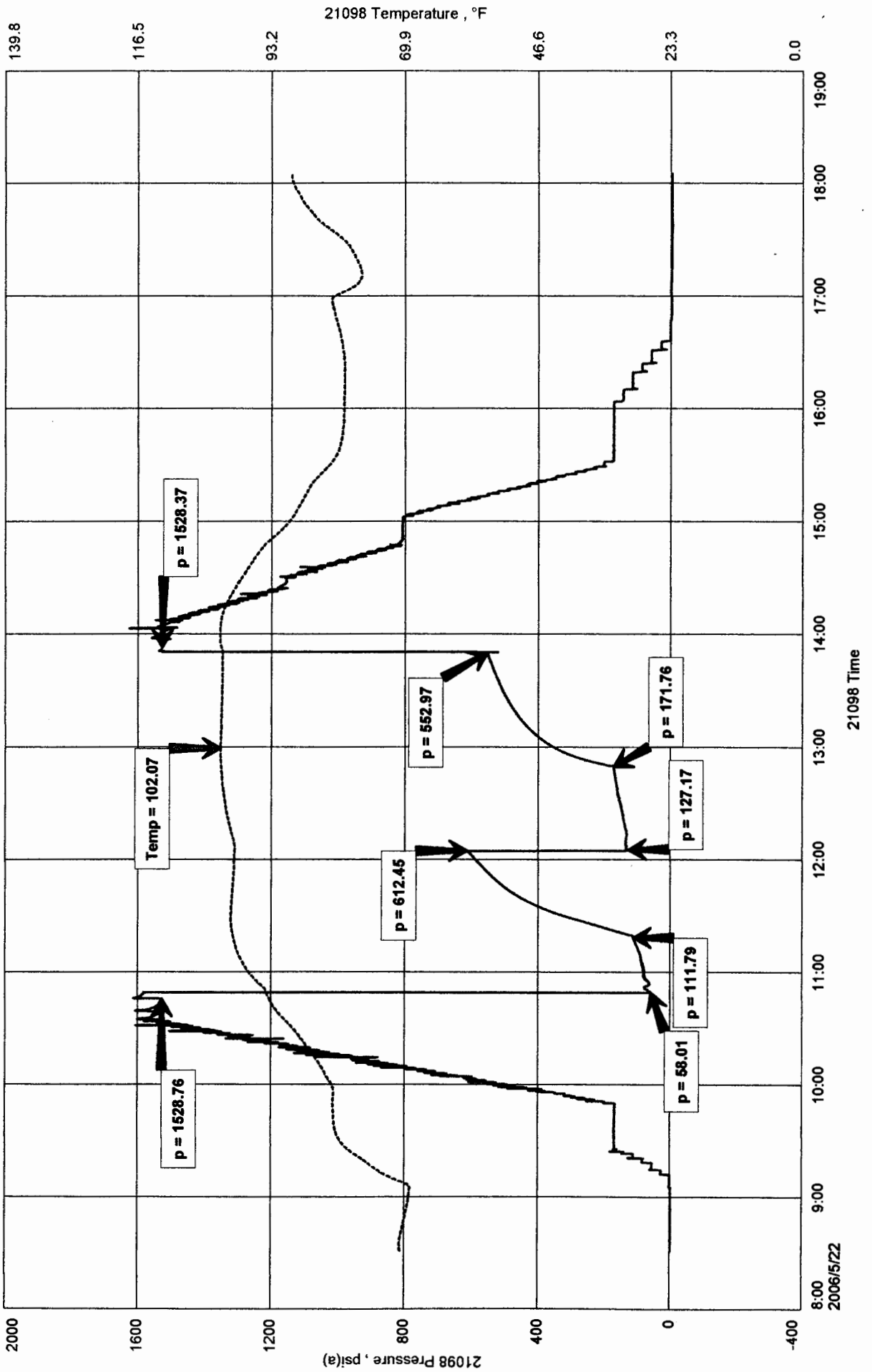
Witness By ROGER MARTIN

Remarks Pit filtrate triton dish chlorides were 9,000 Ppm

L.D. DRILLING, INC.
 DST #4 LKC 'H-I' 3,352' - 3,390'
 Start Test Date: 2006/05/22
 Final Test Date: 2006/05/22

ADDRESS TRUST 'A' #1-1
 Formation: DST #4 LKC 'H-I' 3,352' - 3,390'
 Pool: WILDCAT

ADDRESS TRUST 'A' #1-1

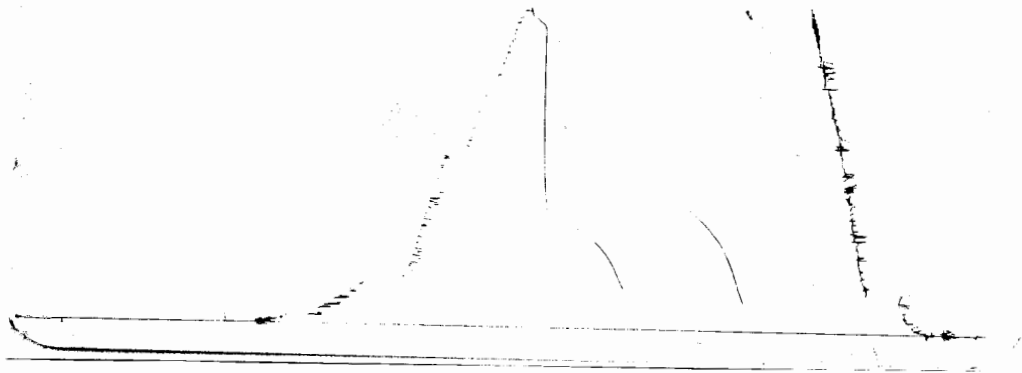


WST # 4 Outside 13387

LKC 'H-I'

3352-3390

LHC 3387



This is an actual photograph of recorder chart.

POINT	PRESSURE		Elec. Office Reading	PSI
	Field Reading			
(A) Initial Hydrostatic Mud	1529	1529		PSI
(B) First Initial Flow Pressure	58	58		PSI
(C) First Final Flow Pressure	112	112		PSI
(D) Initial Closed-in Pressure	612	612		PSI
(E) Second Initial Flow Pressure	127	127		PSI
(F) Second Final Flow Pressure	172	172		PSI
(G) Final Closed-in Pressure	553	553		PSI
(H) Final Hydrostatic Mud	1528	1528		PSI



DIAMOND TESTING

P.O. Box 157
HOISINGTON, KANSAS 67544
(620) 653-7550 • (800) 542-7313
STC 21098.D 257

Company L. D. Drilling, Inc. Lease & Well No. Address Trust "A" No. 1-1
Elevation 1866KB Formation Lansing/Kansas City "J" - "L" Effective Pay -- Ft. Ticket No. 2136
Date 5-23-06 Sec. 1 Twp. 21S Range 13W County Stafford State Kansas

Test Approved By Roger Martin Diamond Representative Roger D. Friedly

Formation Test No. 5 Interval Tested from 3,390 ft. to 3,455 ft. Total Depth 3,455 ft.
Packer Depth 3,385 ft. Size 6 3/4 in. Packer Depth -- ft. Size -- in.
Packer Depth 3,390 ft. Size 6 3/4 in. Packer Depth -- ft. Size -- in.

Depth of Selective Zone Set ft.

Top Recorder Depth (Inside) 3,378 ft. Recorder Number 21098 Cap. 5,000 psi
Bottom Recorder Depth (Outside) 3,452 ft. Recorder Number 13387 Cap. 4,000 psi
Below Straddle Recorder Depth ft. Recorder Number Cap. psi

Drilling Contractor Sterling Drilling Company - Rig 1 Drill Collar Length 248 ft. I.D. 2 1/4 in.
Mud Type Chemical Viscosity 46 Weight Pipe Length -- ft. I.D. -- in.
Weight 8.8 Water Loss 12.8 cc. Drill Pipe Length 3,117 ft. I.D. 3 1/2 in.
Chlorides 10,000 P.P.M. Test Tool Length 25 ft. Tool Size 3 1/2 - IF in.
Jars: Make Bowen Serial Number Not Run Anchor Length 35' perf. w/30' drill pipe Size 4 1/2 - FH in.
Did Well Flow? No Reversed Out No Surface Choke Size 1 in. Bottom Choke Size 5/8 in.
Main Hole Size 7 7/8 in. Tool Joint Size 4 1/2 - XH in.

Blow: 1st Open: Weak, surface blow. Increasing to 1 1/2 ins. No blow back during shut-in.
2nd Open: Weak, 1/8 in., blow. Increasing to 2 ins. No blow back during shut-in.

Recovered 60 ft. of gas & oil cut watery mud = .295200 bbls. (Grind out: 18%-gas; 16%-oil; 18%-water; 48%-mud)

Recovered ft. of

Recovered ft. of

Recovered ft. of

Recovered ft. of

Remarks Tool Sample Grind Out: 20%-water; 35%-mud; 45%-oil

Time Set Packer(s) 8:15 ~~P.M.~~ ^{A.M.} Time Started Off Bottom 10:15 ~~P.M.~~ ^{A.M.} Maximum Temperature 98°

Initial Hydrostatic Pressure (A) 1535 P.S.I.

Initial Flow Period Minutes 30 (B) 10 P.S.I. to (C) 21 P.S.I.

Initial Closed In Period Minutes 30 (D) 213 P.S.I.

Final Flow Period Minutes 30 (E) 31 P.S.I. to (F) 34 P.S.I.

Final Closed In Period Minutes 30 (G) 107 P.S.I.

Final Hydrostatic Pressure (H) 1535 P.S.I.



DIAMOND TESTING
P. O. Box 157
HOISINGTON, KANSAS 67544
(800) 542-7313

FLUID SAMPLE DATA

Company L. D. Drilling, Inc.

Lease & Well No. Andress Trust "A" No. 1-1

Date 5-23-06 Sec. 1 Twp. 21 S Range 13 W

Formation Test No. 5 Interval Tested From 3,390 ft. to 3,455 ft. Total Depth 3,455 ft.

Formation Lansing/Kansas City "J" - "L"

	<u>MUD PIT</u>	<u>RECOVERY</u>	<u>RECOVERY</u>
Viscosity	<u>46</u> CP	<u>--</u> CP	
Weight	<u>8.8</u>	<u>--</u>	
Water Loss	<u>12.8</u> CC	<u>--</u> CC	
PH Factor	<u>10.5</u>	<u>--</u>	<u>Water</u> <u>7.0</u>

	<u>RESISTIVITY</u>	<u>CHLORIDE CONTENT</u>
Recovery Water	<u>.19 @ 98 °F.</u>	<u>25,000 ppm</u>
Recovery Mud	<u>-- @ -- °F.</u>	<u>-- ppm</u>
Recovery Mud Filtrate	<u>-- @ -- °F.</u>	<u>-- ppm</u>
Mud Pit Sample	<u>.36 @ 82 °F.</u>	<u>14,500 ppm</u>
Mud Pit Sample Filtrate	<u>.40 @ 86 °F.</u>	<u>12,500 ppm</u>

Sample Taken By ROGER D. FRIEDLY

Witness By ROGER MARTIN

Remarks Pit filtrate triton dish chlorides were 10,000 Ppm
Recovery water dish chlorides were 25,000 Ppm

GENERAL INFORMATION

Client Information:

Company: L.D. DRILLING, INC.

Contact: L.D. DAVIS

Phone: Fax: e-mail:

Site Information:

Contact: ROGER MARTIN

Phone: Fax: e-mail:

Well Information:

Name: ANDRESS TRUST 'A' #1-1

Operator: L.D. DRILLING, INC.

Location-Downhole: DST #5 LKC 'J,K,L' 3,390' - 3,455'

Location-Surface: SEC 1-21S-13W STAFFORD COUNTY

Test Information:

Company: DIAMOND TESTING

Representative: ROGER D. FRIEDLY

Supervisor: ROGER MARTIN

Test Type: CONVENTIONAL Job Number:

Test Unit: NO. 1

Start Date: 2006/05/23 Start Time: 06:13:00

End Date: 2006/05/23 End Time: 12:39:00

Report Date: Prepared By:

Remarks: Qualified By:

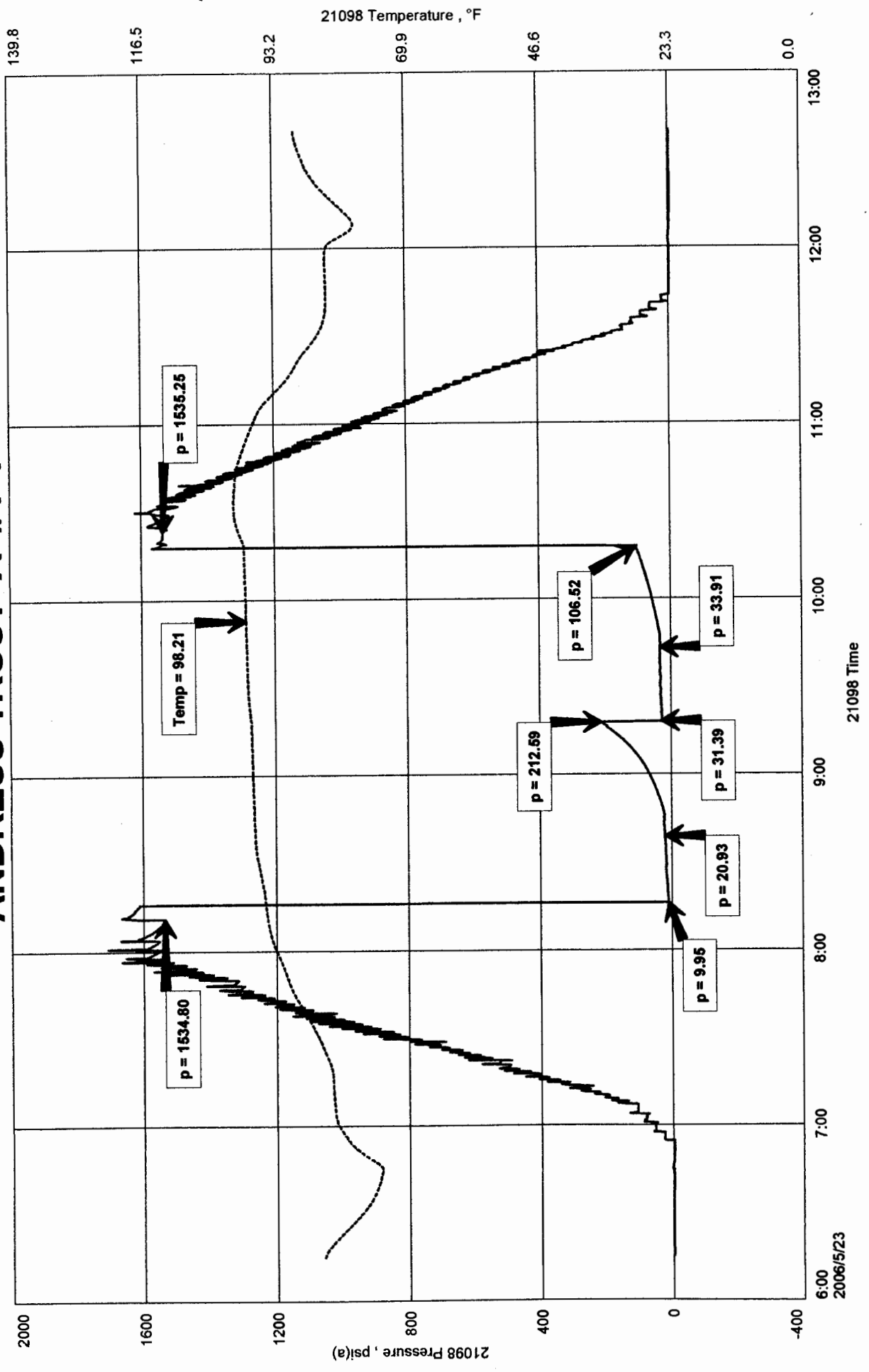
RECOVERED: 60' G&OCWM 18% GAS, 16% OIL, 18% WTR, 48% MUD

TOOL SAMPLE: 20% WTR, 35% MUD, 45% OIL

L.D. DRILLING, INC.
 DST #5 LKC 'J,K,L' 3,390' - 3,455'
 Start Test Date: 2006/05/23
 Final Test Date: 2006/05/23

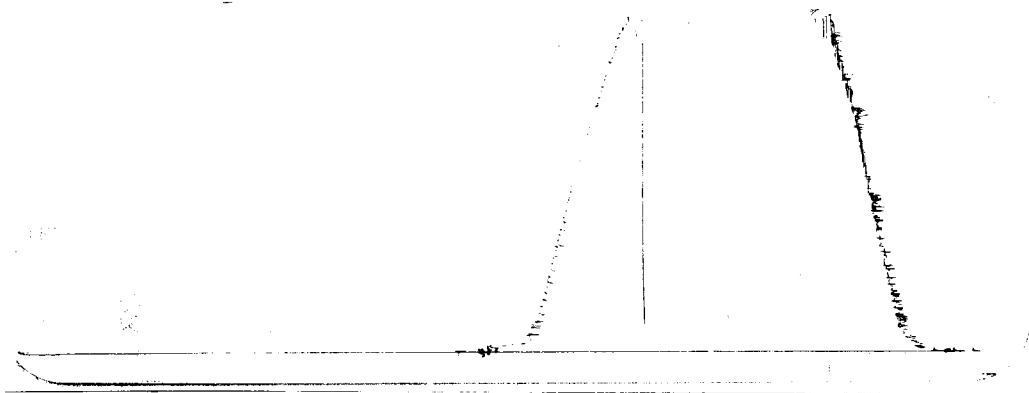
ADDRESS TRUST 'A' #1-1
 Formation: DST #5 LKC 'J,K,L' 3,390' - 3,455'
 Pool: WILDCAT

ADDRESS TRUST 'A' #1-1



DS# 5 outside 13387
L/C 'J, K, L'

3390 - 3455'
Loc 3452



This is an actual photograph of recorder chart.

POINT	PRESSURE		Elec. Office Reading	PSI
	Field Reading			
(A) Initial Hydrostatic Mud	1535		1535	PSI
(B) First Initial Flow Pressure	10		10	PSI
(C) First Final Flow Pressure	21		21	PSI
(D) Initial Closed-in Pressure	213		213	PSI
(E) Second Initial Flow Pressure	31		31	PSI
(F) Second Final Flow Pressure	34		34	PSI
(G) Final Closed-in Pressure	107		107	PSI
(H) Final Hydrostatic Mud	1535		1535	PSI



DIAMOND TESTING

P.O. Box 157
HOISINGTON, KANSAS 67544
(620) 653-7550 • (800) 542-7313
STC 21098.D258

Company L. D. Drilling, Inc. Lease & Well No. Address Trust "A" No. 1-1
Elevation 1866KB Formation Arbuckle Effective Pay Ft. Ticket No. 2137
Date 5-24-06 Sec. 1 Twp. 21S Range 13W County Stafford State Kansas

Test Approved By Roger Martin Diamond Representative Roger D. Friedly

Formation Test No. 6 Interval Tested from 3,447 ft. to 3,520 ft. Total Depth 3,520 ft.
Packer Depth 3,442 ft. Size 6 3/4 in. Packer Depth ft. Size in.
Packer Depth 3,447 ft. Size 6 3/4 in. Packer Depth ft. Size in.
Depth of Selective Zone Set ft.

Top Recorder Depth (Inside) 3,435 ft. Recorder Number 21098 Cap. 5,000 psi
Bottom Recorder Depth (Outside) 3,517 ft. Recorder Number 13387 Cap. 4,000 psi
Below Straddle Recorder Depth ft. Recorder Number Cap. psi

Drilling Contractor Sterling Drilling Company - Rig 1 Drill Collar Length 248 ft. I.D. 2 1/4 in.
Mud Type Chemical Viscosity 54 Weight Pipe Length ft. I.D. in.
Weight 8.9 Water Loss 14.0 cc. Drill Pipe Length 3,174 ft. I.D. 3 1/2 in.
Chlorides 10,100 P.P.M. Test Tool Length 25 ft. Tool Size 3 1/2 - IF in.
Jars: Make Bowen Serial Number Not Run Anchor Length 41' perf. w/32' drill pipe Size 4 1/2 - FH in.
Did Well Flow? No Reversed Out No Surface Choke Size 1 in. Bottom Choke Size 5/8 in.
Main Hole Size 7 7/8 in. Tool Joint Size 4 1/2 - XH in.

Blow: 1st Open: Good, 1 in., blow increasing. Off bottom of bucket in 8 1/2 mins. Weak, 1/2 in., blow back during shut-in.
2nd Open: Good, 1 in., blow increasing. Off bottom of bucket in 8 mins. No blow back during shut-in.

Recovered 155 ft. of gas in pipe
Recovered 986 ft. of clean gassy oil = 2.641200 bbls. (Grind out: 5%-gas; 95%-oil) Gravity: 37.5 @ 60°
Recovered 155 ft. of slightly water & mud cut gassy oil = 2.201000 bbls. (Grind out: 6%-water; 19%-mud; 29%-gas; 46%-oil)
Recovered 31 ft. of slightly watery oil = .152520 bbls. (Grind out: 5%-water; 95%-oil)
Recovered 186 ft. of slightly watery & gassy oil = .915120 bbls. (Grind out: 1%-water; 3%-gas; 96%-oil)
Recovered 31 ft. of slightly water & mud cut gassy oil = .152520 bbls. (Grind out: 10%-water; 21%-mud; 26%-gas; 43%-oil)
Recovered 589 ft. of TOTAL FLUID = 6.062360 bbls.

Remarks Tool Sample Grind Out: 10%-gas; 11%-water; 25%-mud; 54%-oil

Time Set Packer(s) 12:38 A.M. ~~PM~~ Time Started Off Bottom 3:38 A.M. ~~PM~~ Maximum Temperature 103°
Initial Hydrostatic Pressure 1583 P.S.I. (A)
Initial Flow Period 30 Minutes (B) 29 P.S.I. to (C) 160 P.S.I.
Initial Closed In Period 45 Minutes (D) 936 P.S.I.
Final Flow Period 45 Minutes (E) 167 P.S.I. to (F) 227 P.S.I.
Final Closed In Period 60 Minutes (G) 925 P.S.I.
Final Hydrostatic Pressure 1571 P.S.I. (H)



DIAMOND TESTING
P. O. Box 157
HOISINGTON, KANSAS 67544
(800) 542-7313

FLUID SAMPLE DATA

Company L. D. Drilling, Inc.
Lease & Well No. Andress Trust "A" No. 1-1
Date 5-24-06 Sec. 1 Twp. 21 S Range 13 W
Formation Test No. 6 Interval Tested From 3,447 ft. to 3,520 ft. Total Depth 3,520 ft.
Formation Arbuckle

	<u>MUD PIT</u>	<u>RECOVERY</u>	<u>RECOVERY</u>
Viscosity	<u>54</u> CP	<u>--</u> CP	
Weight	<u>8.9</u>	<u>--</u>	
Water Loss	<u>14.0</u> CC	<u>--</u> CC	
PH Factor	<u>10.0</u>	<u>--</u>	<u>Water</u> <u>8.0</u>

	<u>RESISTIVITY</u>	<u>CHLORIDE CONTENT</u>
Recovery Water	<u>.36 @ 90 °F.</u>	<u>10,600 ppm</u>
Recovery Mud	<u>-- @ -- °F.</u>	<u>-- ppm</u>
Recovery Mud Filtrate	<u>-- @ -- °F.</u>	<u>-- ppm</u>
Mud Pit Sample	<u>.45 @ 60 °F.</u>	<u>17,000 ppm</u>
Mud Pit Sample Filtrate	<u>.48 @ 64 °F.</u>	<u>14,500 ppm</u>

Sample Taken By ROGER D. FRIEDLY

Witness By ROGER MARTIN

Remarks Pit filtrate triton dish chlorides were 10,100 Ppm
Recovery water dish chlorides were 10,100 Ppm

GENERAL INFORMATION

Client Information:

Company: L.D. DRILLING, INC.

Contact: L.D. DAVIS

Phone: Fax: e-mail:

Site Information:

Contact: ROGER MARTIN

Phone: Fax: e-mail:

Well Information:

Name: ANDRESS TRUST 'A' #1-1

Operator: L.D. DRILLING, INC.

Location-Downhole: DST #6 ARBUCKLE 3,447' - 3,520'

Location-Surface: SEC 1-21S-13W STAFFORD COUNTY

Test Information:

Company: DIAMOND TESTING

Representative: ROGER D. FRIEDLY

Supervisor: ROGER MARTIN

Test Type: CONVENTIONAL Job Number:

Test Unit: NO.1

Start Date: 2006/05/23 Start Time: 22:17:00

End Date: 2006/05/24 End Time: 07:17:00

Report Date: Prepared By:

Remarks: Qualified By:

RECOVERED: 155' GAS IN PIPE

186' CGO 5% GAS, 95% OIL 37.5 GRAVITY @ 60 deg.

155' SLTW&MCGO 6% WTR, 19% MUD, 29% GAS, 46% OIL

DRILL COLLARS: 31' SLTWO 5% WTR, 95% OIL

186' SLTWTR&GO 1% WTR, 3% GAS, 96% OIL.

31' SLTW&MCGO 10% WTR, 21% MUD, 26% GAS, 43% OIL.

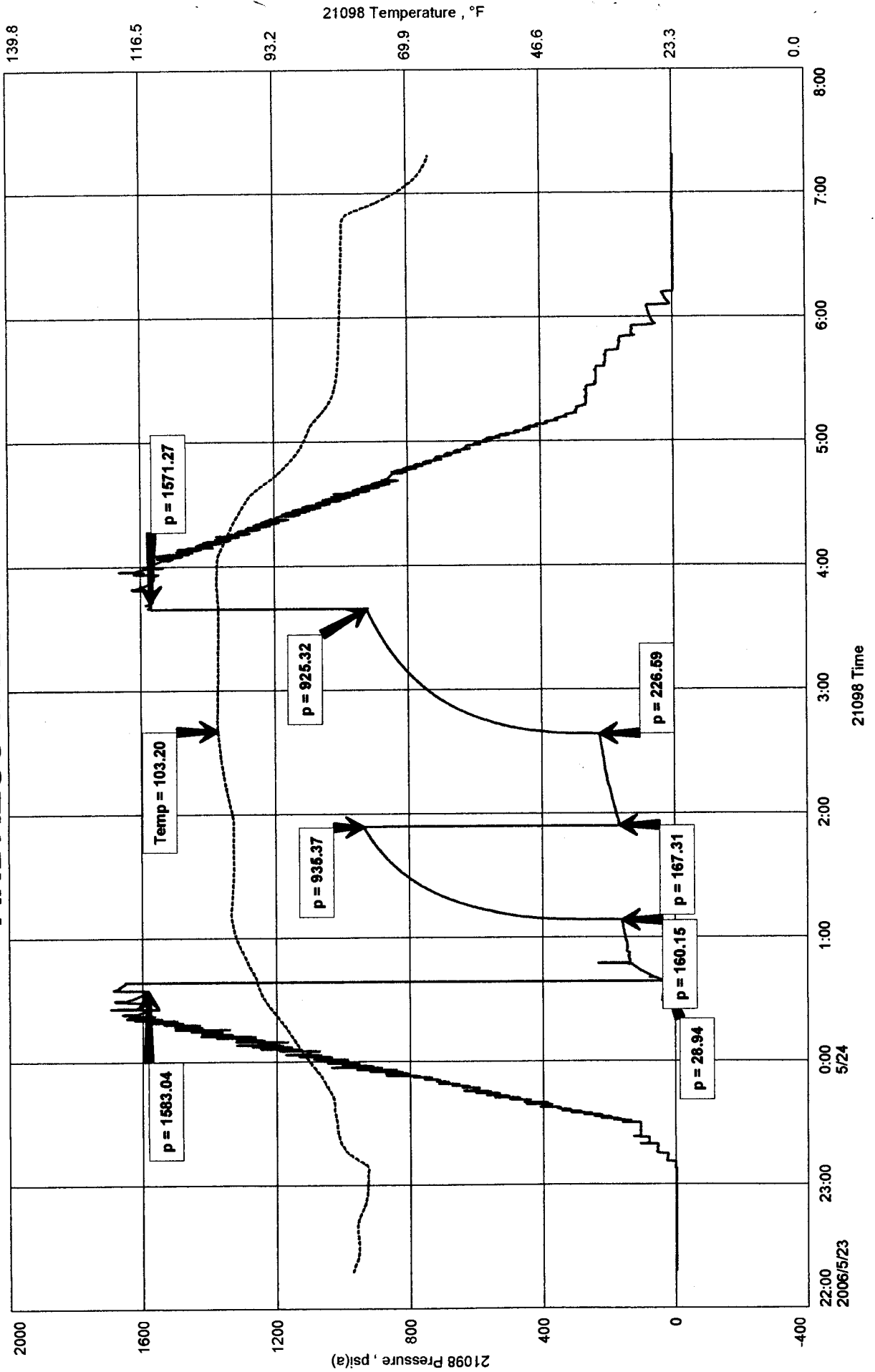
586' TOTAL FLUID.

TOOL SAMPLE: 10% GAS, 11% WTR, 25% MUD, 54% OIL

L.D. DRILLING, INC.
 DST #6 ARBUCKLE 3,447' - 3,520'
 Start Test Date: 2006/05/23
 Final Test Date: 2006/05/24

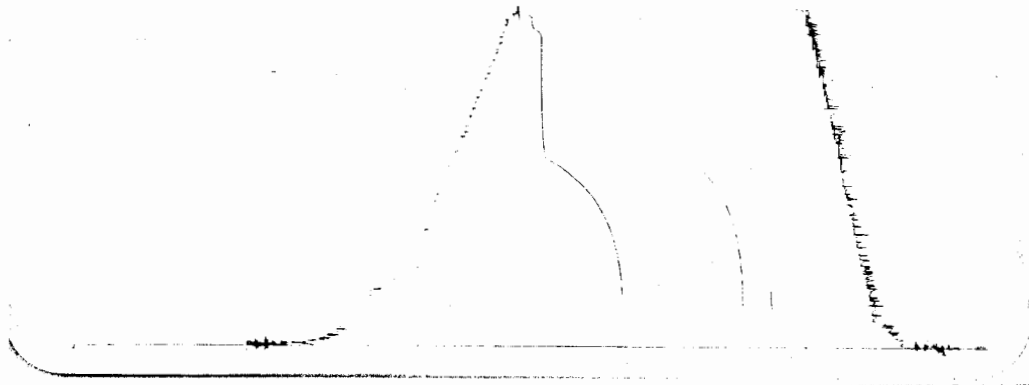
ADDRESS TRUST 'A' #1-1
 Formation: DST #6 ARBUCKLE 3,447' - 3,520'
 Pool: WILDCAT

ADDRESS TRUST 'A' #1-1



(DST # 6 OUTSIDE 13387
ARB

5447-3520
LOC 3517



This is an actual photograph of recorder chart.

POINT	PRESSURE		Elec. Office Reading	PSI
	Field Reading			
(A) Initial Hydrostatic Mud	1583	1583		PSI
(B) First Initial Flow Pressure	29	29		PSI
(C) First Final Flow Pressure	160	160		PSI
(D) Initial Closed-in Pressure	936	936		PSI
(E) Second Initial Flow Pressure	167	167		PSI
(F) Second Final Flow Pressure	227	227		PSI
(G) Final Closed-in Pressure	925	925		PSI
(H) Final Hydrostatic Mud	1571	1571		PSI