

33-21-24W

KANSAS DRILLERS LOG

State Geological Survey
WICHITA, BRANCH

API No. 15 — 083 — 20,293
County Number

S. 33 T. 21 R. 24 W
Loc. C NE SW
County Hodgeman

Operator
Oasis Petroleum, Inc.

Address
3535 N. W. 58th Street Oklahoma City, Oklahoma 73112

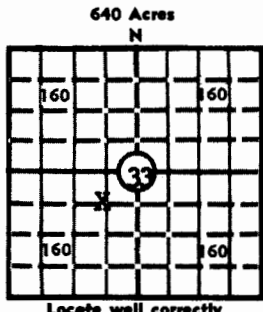
Well No. #1 Lease Name Adams

Footage Location
Approx. 150 NE of C NE SW
feet from (N) (S) line feet from (E) (W) line

Principal Contractor Geologist
Gabbert - Jones, Inc.

Spud Date Total Depth P.B.T.D.
3-9-73 4717

Date Completed Oil Purchaser
5-16-73



Elev.: Gr.
DF 2444' KB 2447'

CASING RECORD

Report of all strings set — surface, intermediate, production, etc.

Purpose of string	Size hole drilled	Size casing set (in O.D.)	Weight lbs/ft.	Setting depth	Type cement	Sacks	Type and percent additives
Surface	12 1/2	8 5/8	28	621	Common	315	3% Gel, 3% CC
Production	7 7/8	5 1/2	14	4716	Howcolite	175	
					Salt Sat. Pozmix 100		
DV tool at 1704'					Howcolite	300	

LINER RECORD

PERFORATION RECORD

Top, ft.	Bottom, ft.	Sacks cement	Shots per ft.	Size & type	Depth interval

Size	Setting depth	Packer set at

ACID, FRACTURE, SHOT, CEMENT SQUEEZE RECORD

Amount and kind of material used	Depth interval treated

INITIAL PRODUCTION

Shut in

Date of first production	Producing method (flowing, pumping, gas lift, etc.)				
RATE OF PRODUCTION PER 24 HOURS	Oil	Gas	Water	Gas-oil ratio	
	bbls.	MCF	bbls.	CFPB	
Disposition of gas (vented, used on lease or sold)			Producing interval (s)		

INSTRUCTIONS: As provided in KCC Rule 82-2-125, within 90 days after completion of a well, one completed copy of this Drillers Log shall be transmitted to the State Geological Survey of Kansas, 4150 Monroe Street, Wichita, Kansas 67209. Copies of this form are available from the Conservation Division, State Corporation Commission, 3830 So. Meridian (P.O. Box 17027), Wichita, Kansas 66217. Phone AC 316-522-2206. If confidential custody is desired, please note Rule 82-2-125. Drillers Logs will be on open file in the Oil and Gas Division, State Geological Survey of Kansas, Lawrence, Kansas 66044.

Operator **Oasis Petroleum, Inc.** DESIGNATE TYPE OF COMP.: OIL, GAS, DRY HOLE, SWDW, ETC.:

Well No. **1** Lease Name **Adams** Dry Hole

S 33 T 21S R 24 ^W

WELL LOG

Show all important zones of porosity and contents thereof; cored intervals, and all drill-stem tests, including depth interval tested, cushion used, time tool open, flowing and shut-in pressures, and recoveries.

SHOW GEOLOGICAL MARKERS, LOGS RUN, OR OTHER DESCRIPTIVE INFORMATION.

FORMATION DESCRIPTION, CONTENTS, ETC.	TOP	BOTTOM	NAME	DEPTH
<u>Miss. - Core # 1 (4653-4662')</u>			Anhydrite	1698
Red, Gray, waxy shale	4653	4658	Heebner	3966
Red, gray, waxy shale w/chert nodules	4658	4661	Lansing	4014
Rotten shale (lost)	4661	4662	Stark	4291
			Pawnee	4506
			Ft. Scott	4555
<u>Miss. - Core # 2 (4662-4687')</u>			Miss	4663
Rotten shale (lost)	4662	4665	Log TD	4714
Rotten Shale w/more chert nodules	4665	4666	(Tops 3' up hole from rotary tops.)	
Good dolomite w/even Sat., bleeding oil	4666	4672½		
Dense dolomite w/tr, of bleeding oil & frags	4672½	4673		
Tan dolomite, slightly dense w/occasional vugs bleeding oil	4673	4675		
Green shale	4675	4687		
<u>Miss - DST No. 1 (4630-4687')</u>				
Open 2 hrs. IBHP 1346# 30 min, FBHP 1148# 60 min, FP 34-94#				
Recovery: 30' gas, 160' VHMCO				
<u>Miss - DST No. 2 (4674-4717')</u>				
Open 2 hrs. IBHP 1260# 30 min, FBHP 1234# 60 min.				
Recovery: 549' SO & GCMW				

LOG TOPS	DEPTH	DATUM
ANHY	1698	+ 749
HEEB	3966	-1519
LANS	4014	-1567
STARK	4291	-1844
PAWN	4506	-2059
FT SC	4555	-2108
MLSS	4663	-2216
LTD	4714	-2267
RTD	4717	-2270

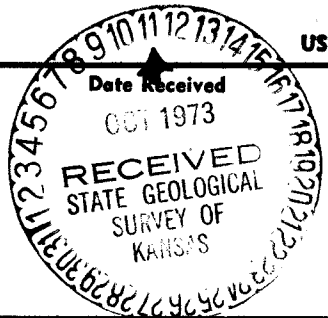
8 5/8" 621/315SX; 5 1/2" 4716/275SX DV @ 1704/300SX
 CORE#1 4653-62 FULL REC
 CORE#2 4662-87 FULL REC

DST(1) 4630-87/2', 30' GIP, 160' VHMCO, BHP 1346#/30"-1148#/60" BLDG., FP 34-94#

DST(2) 4674-4717/2', 549' SO & GCMW, BHP 1260#/30"-1234#/60", FP 34-256#

MICT, PF 4664-68 SSO, A250 REC LD & SWB 4BOPH 2000AC REC LD SWB 3BOPH A3000 REC LD SWB 3BOPH, POP

USE ADDITIONAL SHEETS, IF NECESSARY, TO COMPLETE WELL RECORD.



David C. Holbe
 Signature

Production Engineer
 Title

September 12, 1973
 Date