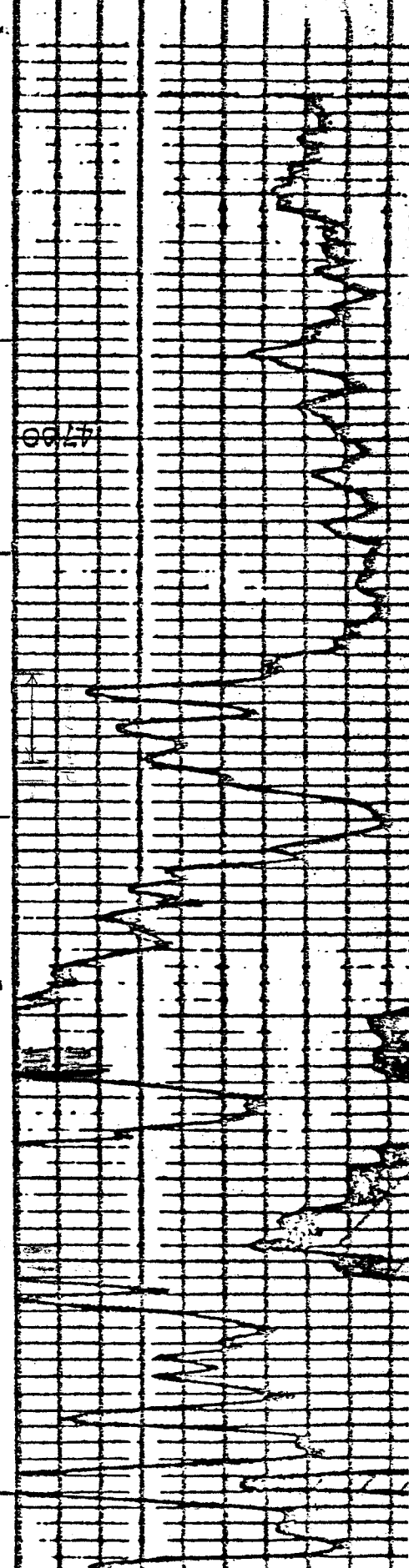
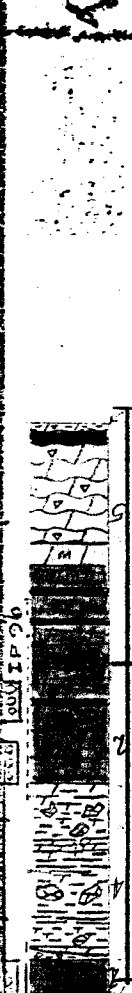
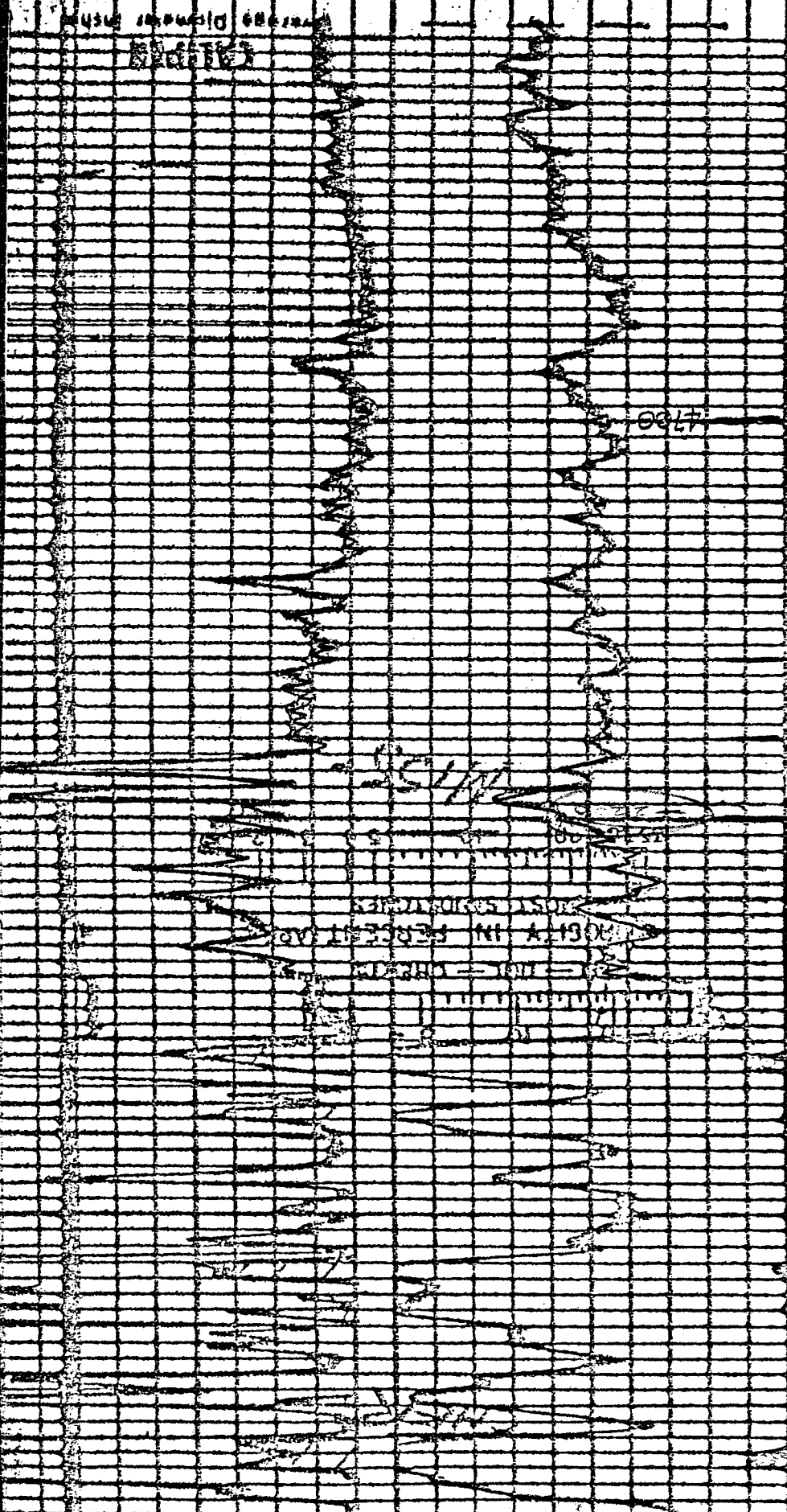


Stratigraphy Core Recor.	Samples	Unit No.	Depth	Lithology	Contact	Color	Depositional Texture	Grain Size or Allochthon or Dolomite %	Cement	Porosity	Permeability	Fossils	Accessory Constituents	Bedding		Sedimentary Structures	Interpreted Depos. Envir.	Prod. Data	Remarks	
														Horizontal	Cross Lamin.					
Photo Chemical Peel Thin Section			4650																	
		1	4650	dk brn																heavy oil stn.
		2	4660	shp gn+gy shp gn+gy dkgy gn+gy dkgy gn+gy																shaly dol. heavy oil stn. cut. pseud. shaly dead oil in vugs
		3	4670	shp gn+gy																u?
		4	4680	shp gn+gy brn																breccia in place
		5	4690	shp gn+gy brn																mod. oil stn.
		6	4700	shp gn+gy brn																cut. pseud. app.
		7	4710	shp gn+gy brn																spotty thiol stain cut in tech frac cut. pseud. app.
			4720	shp gn+gy brn																spotty thiol stain
				shp gn+gy brn																cut. nod. are diffuse & fossiliferous
				shp gn+gy brn																cut. pseud. shaly

(move core up 2' to match log)
BASIS 1 - Schavillige

19" 20" 21" 22" 23" 24" 25" 26" 27" 28" 29" 30" 31" 32" 33" 34" 35" 36" 37" 38" 39" 40" 41" 42" 43" 44" 45" 46" 47" 48" 49" 50" 51" 52" 53" 54" 55" 56" 57" 58" 59" 60" 61" 62" 63" 64" 65" 66" 67" 68" 69" 70" 71" 72" 73" 74" 75" 76" 77" 78" 79" 80" 81" 82" 83" 84" 85" 86" 87" 88" 89" 90" 91" 92" 93" 94" 95" 96" 97" 98" 99" 100"



4600

CS