

FORM 51

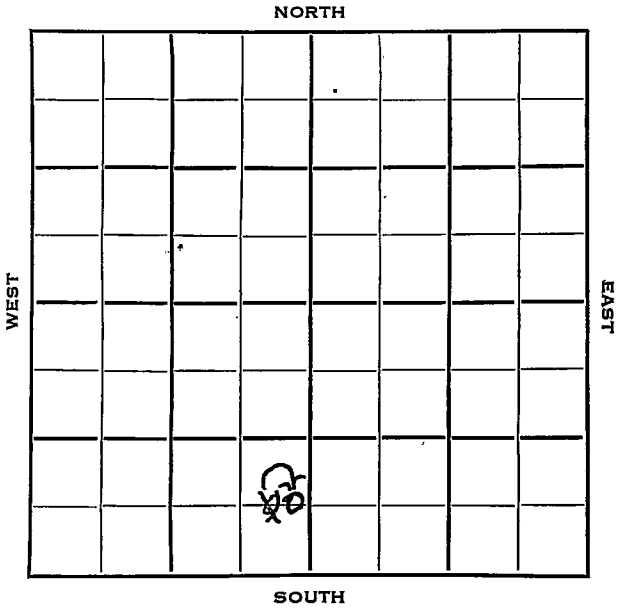
Pawnee

KANSAS

Section 27 Township 21 Range 16W

Well No. 1 Schrope

Company Musgrove Petroleum Corporation



Sec. 27 Twp. 21 R. 16W

Well No. #1 Schrope Farm

Musgrove Petr. Company

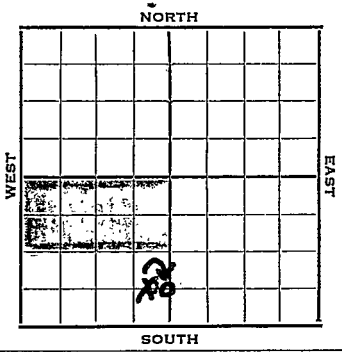
Larned Pool Contractor

         Ft. from N. Line

660 Ft. from S. Line

150  
330 Ft. from E. Line

         Ft. from W. Line



C E L S E S W

1953

### REPORT

Rev. 1992: DF

- 2/25 Drlg. 830'
- 2/27 Anhy 886'  
8-5/8" @ 992' (Wire)
- 3/2 Drlg. 2275' in Ft. Riley/ (Card)
- 3/5 Drlg. 3010' (Ltr)
- 3/9 Heeb 3387'  
Tor. 3402'  
Doug. 3425'  
Br. lime 3485'  
Lans. 3494'  
Making trip @ 3533' 

$$\frac{5450}{359}$$
- 3/10 Drlg. 3643' "
- 3/12 Arb. 3853' RTD 3854'  
Running 5" (Ltr)
- 3/13 5" @ 3855. TD corrected to 3855 1/2' (Crdr)
- 3/17 NR
- 3/26 CO to 3855 1/2' FU 1600' oil 1 hr.  
FU 3340' oil 2 1/2 hr. DD 3868'  
S/11 BOPH 4 hr. 2596' off bottom.  
S/13 1/2 BOPH 4 hr. 2914' off bottom.  
Indicated capacity 8000 BOPD. (Ltr)
- 4/2 NR
- 4/10 Completed 3000 BOPD  
State test 6532 BOPD (Ltr)

OVER

1953  
4/8

Spud 2-25-53 Oil well TD 3868'  
8-5/8" @ 992 Anhy 886 Heeb 3387  
Tör. 3402 Doug. 3426 Br li 3485'  
Lans. 3494 Arb. 3853 TD 3855½'  
5" @ 3855 CO to 3855½'  
FU 1600' oil 1 hr. FU 3340' oil  
2½ hr. DD 3868 S/11 BOPH 4 hrs.  
S/13½ BOPH 4 hr.  
Comp. 3000 BOPD  
Prod. test 6532 BOPD

**COMPLETED**

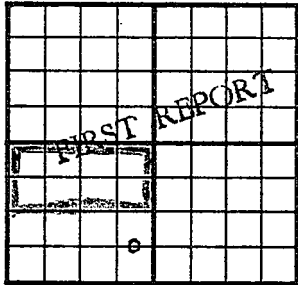
County Pawnee State Kansas

Sec. 27 (Blk. Twp.) 21 (Sur. Rge.) 16W Map No.

Operator Musgrove Pet.

Well No. 1 Farm Schrope

Elev. \_\_\_\_\_ Location C E L SE SW



660 Ft. From S Line SW

330 Ft. From E Line Quarter

Ist. Report FEB 25 1953

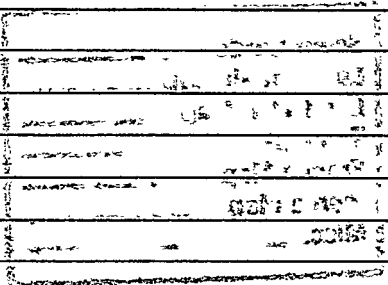
Completion \_\_\_\_\_

Remarks \_\_\_\_\_

Spudding Date \_\_\_\_\_

Drig. Data Larned Pool

Drig 830



Map No. \_\_\_\_\_ Sec. 27 Twp. 21 R. 16W

Well No. 1 Schrope

Musgrove Pet. \_\_\_\_\_ Company

CORRECTION \_\_\_\_\_ Contractor

C E L S E S W

SECTION PLAT

	o		

\_\_\_\_\_ Ft. from N. Line

660 Ft. from S. Line

150 Ft. from E. Line

\_\_\_\_\_ Ft. from W. Line

Pawnee County

RECORD

Location \_\_\_\_\_

Cased \_\_\_\_\_ in., \_\_\_\_\_ ft.

Rig up \_\_\_\_\_

Sand \_\_\_\_\_

Drilling and Remarks:

Gas \_\_\_\_\_

Oil \_\_\_\_\_

Reported  
330' from E line

Total Depth \_\_\_\_\_

PRODUCTION

1st 24 hrs. Nat. \_\_\_\_\_

1st 24 hrs. after shot \_\_\_\_\_

Gas \_\_\_\_\_ Cu. Ft.

Dry Hole \_\_\_\_\_

Abandoned \_\_\_\_\_

Date

MAR. 4 1953

J. G. MOGENSEN

19

Scout

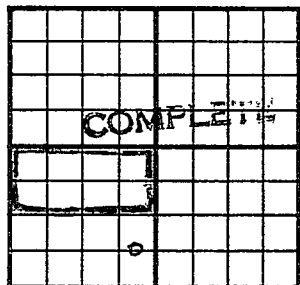
County Pawnee State Kansas

Sec. 27 (Blk. Twp.) 21 (Sur. Rge.) 16W Map No.

Operator Musgrove Pet.

Well No. 1 Farm Schrope

Elev. 1992 Location C E L SE SW



660 Ft. From S Line SW

150 Ft. From E Line Quarter

1st. Report

Completion APR 8 1953

Remarks Larned Pool

Spudding Date 2-25-53

Drlg. Data Oil well TD 3868

8 5/8" @ 992 Anhy 886 Heeb. 3387

Tor. 3402 Doug. 3426 Br. line 3485

Lans. 3494 Arb. 3853 TD 3855 1/2

5" @ 3855 CO to 3855 1/2 FU #600' oil 1 hr.

FU 3340' oil 2 1/2 hr. DD 3868 S/ 11 boph

4 hr. S/ 13 1/2 boph 4 hr.

Comp. 3000 bopd Prod. test 6532. bopd