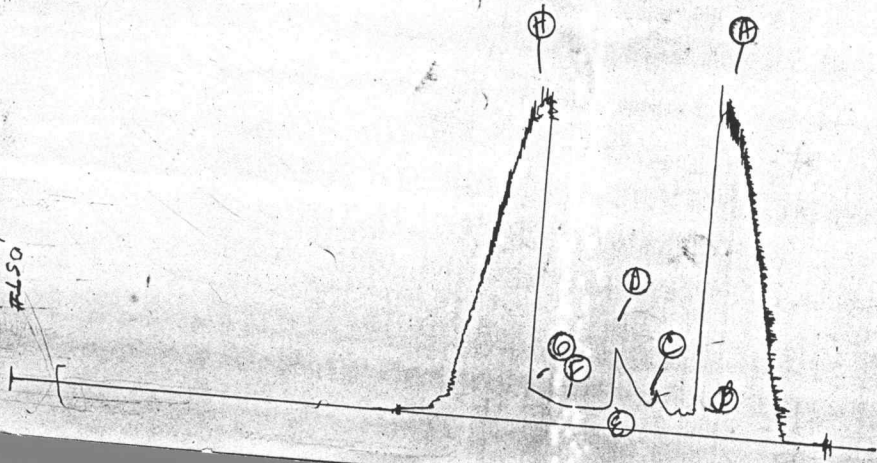


JK #13368

I

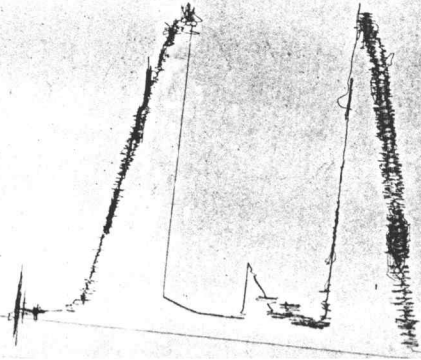
0574
10226





JKT # 13368
0

0.574
13368





FORMATION TEST REPORT



Home Office:

Wichita, Kansas 67201

P.O. Box 1599

Phone (316) 262-5861

WESTERN TESTING CO. INC.
SUBSURFACE PRESSURE SURVEY

DATE : 3-17-87
CUSTOMER : GENERAL OIL COMPANY INC.
WELL : #1-A TEST: 1
ELEVATION : NA
SECTION : 33
RANGE : 11W COUNTY : STAFFORD
GAUGE SN# : 10270 RANGE : 4150
TICKET : 13368
LEASE : WHOOPING CRANE
GEOLOGIST : D. BREWER
FORMATION : KANSAS CITY
TOWNSHIP : 21S
STATE : KANSAS
CLOCK : 12

INTERVAL FROM : 3333 TO : 3390 TOTAL DEPTH : 3390
DEPTH OF SELECTIVE ZONE :
PACKER DEPTH : 3333 SIZE : 6.63
PACKER DEPTH : SIZE :
PACKER DEPTH : SIZE :
PACKER DEPTH : SIZE :

DRILLING CON. : WOODMAN-IANNITTI RIG #1
MUD TYPE : STARCH VISCOSITY : 43
WEIGHT : 9.8 WATER LOSS (CC) : 9.5
CHLORIDES (PPM) : 48000
JARS-MAKE : WTC SERIAL NUMBER : 421
DID WELL FLOW ? : NO REVERSED OUT ? : NO

DRILL COLLAR LENGTH : 0 FT I.D. inch : 0.00
WEIGHT PIPE LENGTH : 350 FT I.D. inch : 2.70
DRILL PIPE LENGTH : 2963 FT I.D. inch : 3.80
TEST TOOL LENGTH : 20 FT TOOL SIZE : 5.50
ANCHOR LENGTH : 57 FT ANCHOR SIZE : 5.50
SURFACE CHOKE SIZE : .75 IN BOTTOM CHOKE SIZE : .75
MAIN HOLE SIZE : 7.875 IN TOOL JOINT SIZE : 4.5 XH

BLOW COMMENT #1 : INITIAL FLOW-FAIR BLOW BUILDING TO STRONG IN 12 MINUTES.
BLOW COMMENT #2 : FINAL FLOW-WEAK 2" BLOW BUILDING TO A FAIR 5" BLOW.
BLOW COMMENT #3 :
BLOW COMMENT #4 :

WESTERN TESTING CO. INC.
WICHITA - KANSAS

Pressure Transient Report

COMPANY : GENERAL OIL COMPANY INC.
RIG : STAFFORD-KANSAS
FIELD : WHOOPING CRANE
WELL : #1-A
DATE : 3-17-87
GAUGE NO : 10270

OPERATIONAL COMMENTS

SLID TOOL APPROX. 9 FEET TO BOTTOM

COMPANY : GENERAL OIL COMPANY INC.
WELL : #1-A
GAUGE # : 10270
DATE : 17/ 3/87

FIELD : WHOOPING CRANE
JOB # : 13368
DEPTH : 3390
TEST :

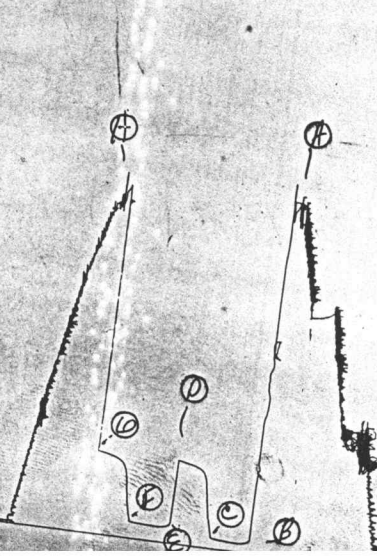
DATA No.	REAL TIME HR:MN:SS	ELAPSE TIME DELTA HOURS	PRESSURE PSIG	TEMP DEG F	DELTA P Pi-P(i-1)
1	9:50: 0	0.000	121.000	107.00	0.000
2	9:54:59	0.083	118.000	107.00	-3.000
3	10: 0: 0	0.167	135.000	107.00	17.000
4	10: 5: 0	0.250	142.000	107.00	7.000
5	10: 9:59	0.333	132.000	107.00	-10.000
6	10:15: 0	0.417	192.000	107.00	60.000
7	10:20: 0	0.500	149.000	107.00	-43.000
8	10:23: 0	0.550	149.000	107.00	0.000
9	10:26: 0	0.600	160.000	107.00	11.000
10	10:29: 0	0.650	183.000	107.00	23.000
11	10:32: 0	0.700	214.000	107.00	31.000
12	10:35: 0	0.750	253.000	107.00	39.000
13	10:38: 0	0.800	295.000	107.00	42.000
14	10:41: 0	0.850	323.000	107.00	28.000
15	10:44: 0	0.900	357.000	107.00	34.000
16	10:47: 0	0.950	405.000	107.00	48.000
17	10:50: 0	1.000	438.000	107.00	33.000
18	10:51: 0	1.017	106.000	107.00	-332.000
19	10:54:59	1.083	106.000	107.00	0.000
20	11: 0: 0	1.167	106.000	107.00	0.000
21	11: 5: 0	1.250	106.000	107.00	0.000
22	11: 9:59	1.333	106.000	107.00	0.000
23	11:15: 0	1.417	106.000	107.00	0.000
24	11:20: 0	1.500	106.000	107.00	0.000
25	11:23: 0	1.550	107.000	107.00	1.000
26	11:26: 0	1.600	112.000	107.00	5.000
27	11:29: 0	1.650	118.000	107.00	6.000
28	11:32: 0	1.700	127.000	107.00	9.000
29	11:35: 0	1.750	135.000	107.00	8.000
30	11:38: 0	1.800	145.000	107.00	10.000
31	11:41: 0	1.850	156.000	107.00	11.000
32	11:44: 0	1.900	167.000	107.00	11.000
33	11:47: 0	1.950	177.000	107.00	10.000
34	11:50: 0	2.000	185.000	107.00	8.000

WESTERN TESTING CO. INC.

Plot # 13369

I

OST #
10270





JK # 13369

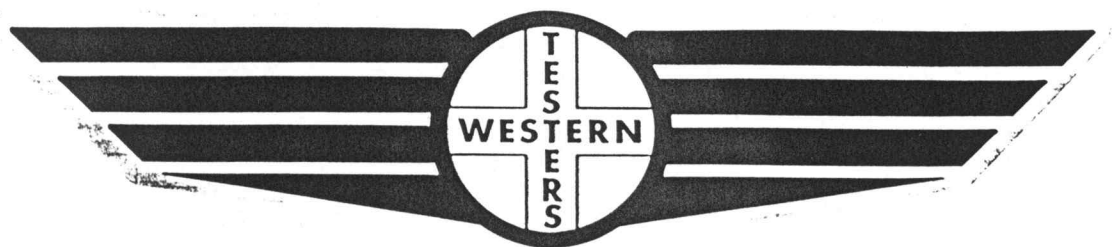
0

JK
13268





FORMATION TEST REPORT



Home Office:

Wichita, Kansas 67201

P.O. Box 1599

Phone (316) 262-5861

WESTERN TESTING CO. INC.
SUBSURFACE PRESSURE SURVEY

DATE : 3-18-87
CUSTOMER : GENERAL OIL COMPANY INC.
WELL : #1-A TEST: 2
ELEVATION : 1748 KB
SECTION : 33
RANGE : 11W COUNTY : STAFFORD
GAUGE SN# : 10270 RANGE : 4150
TICKET : 13369
LEASE : WHOOPING CRANE
GEOLOGIST : D. BREWER
FORMATION : SIMPSON
TOWNSHIP : 21S
STATE : KANSAS
CLOCK : 12

INTERVAL FROM : 3500 TO : 3510 TOTAL DEPTH : 3510
DEPTH OF SELECTIVE ZONE :
PACKER DEPTH : 3500 SIZE : 6.63
PACKER DEPTH : SIZE :
PACKER DEPTH : SIZE :
PACKER DEPTH : SIZE :

DRILLING CON. : WOODMAN-IANNITTI RIG #1
MUD TYPE : STARCH VISCOSITY : 44
WEIGHT : 9.9 WATER LOSS (CC) : 12.8
CHLORIDES (PPM) : 66000
JARS-MAKE : WTC SERIAL NUMBER : 421
DID WELL FLOW ? : GAS REVERSED OUT ? : NO

DRILL COLLAR LENGTH : 0 FT I.D. inch : 0.00
WEIGHT PIPE LENGTH : 382 FT I.D. inch : 2.70
DRILL PIPE LENGTH : 3098 FT I.D. inch : 3.80
TEST TOOL LENGTH : 20 FT TOOL SIZE : 5.50
ANCHOR LENGTH : 10 FT ANCHOR SIZE : 5.50
SURFACE CHOKE SIZE : .75 IN BOTTOM CHOKE SIZE : .75
MAIN HOLE SIZE : 7.875 IN TOOL JOINT SIZE : 4.5 XH

BLOW COMMENT #1 : INITIAL FLOW-WEAK BLOW BUILDING TO A STRONG BLOW
IN 6 MINUTES.
BLOW COMMENT #2 : FINAL FLOW-STRONG BLOW THROUGHOUT.
BLOW COMMENT #3 : GAS TO SURFACE-TOO WEAK TO GAUGE.
BLOW COMMENT #4 :

RECOVERED : 30 FT OF: HEAVY GAS CUT MUDDY OIL
20% OIL-74% GAS-4% WTR-2% MUD
RECOVERED : 180 FT OF: HEAVY GAS CUT MUDDY OIL
35% OIL-56% GAS-4% WTR-5% MUD

GRAVITY- 44

Total Barrels Fluid = 1.49
Total Fluid Prod Rate = 35.69 BFPD
Indicated Oil Rate = 11.73 BOPD
Indicated Wtr Rate = 2.89 BWPD
Corrected Oil Rate = 21.42 BOPD
Corrected Wtr Rate = 5.28 BWPD

REMARK 1 :
REMARK 2 :
REMARK 3 :
REMARK 4 :

SET PACKER(S) : 10:10 AM

TIME STARTED OFF BOTTOM : 12:10 PM

WELL TEMPERATURE : 106

INITIAL HYDROSTATIC PRESSURE

(A) 1922

INITIAL FLOW PERIOD MIN: 30

(B) 49 PSI TO (C) : 59

INITIAL CLOSED IN PERIOD MIN: 30

(D) 460

FINAL FLOW PERIOD MIN: 30

(E) 87 PSI TO (F) : 93

FINAL CLOSED IN PERIOD MIN: 30

(G) 458

FINAL HYDROSTATIC PRESSURE

(H) 1908

WESTERN TESTING CO. INC.
WICHITA - KANSAS

Pressure Transient Report

COMPANY : GENERAL OIL COMPANY INC.
RIG : STAFFORD-KANSAS
FIELD : WHOOPING CRANE
WELL : #1-A
DATE : 3-18-87
GAUGE NO : 10270

OPERATIONAL COMMENTS

COMPANY : GENERAL OIL COMPANY INC.
WELL : #1-A
GAUGE # : 10270
DATE : 18/ 3/87

FIELD : WHOOPING CRANE
JOB # : 13369
DEPTH : 3510
TEST :

DATA No.	REAL TIME HR:MN:SS	ELAPSE TIME DELTA HOURS	PRESSURE PSIG	TEMP DEG F	DELTA P Pi-P(i-1)
1	10:10: 0	0.000	49.000	106.00	0.000
2	10:14:59	0.083	49.000	106.00	0.000
3	10:20: 0	0.167	49.000	106.00	0.000
4	10:25: 0	0.250	51.000	106.00	2.000
5	10:29:59	0.333	54.000	106.00	3.000
6	10:35: 0	0.417	57.000	106.00	3.000
7	10:40: 0	0.500	59.000	106.00	2.000
8	10:43: 0	0.550	160.000	106.00	101.000
9	10:46: 0	0.600	284.000	106.00	124.000
10	10:49: 0	0.650	390.000	106.00	106.000
11	10:52: 0	0.700	420.000	106.00	30.000
12	10:55: 0	0.750	432.000	106.00	12.000
13	10:58: 0	0.800	441.000	106.00	9.000
14	11: 1: 0	0.850	446.000	106.00	5.000
15	11: 4: 0	0.900	451.000	106.00	5.000
16	11: 7: 0	0.950	456.000	106.00	5.000
17	11:10: 0	1.000	460.000	106.00	4.000
18	11:11: 0	1.017	87.000	106.00	-373.000
19	11:14:59	1.083	87.000	106.00	0.000
20	11:20: 0	1.167	87.000	106.00	0.000
21	11:25: 0	1.250	87.000	106.00	0.000
22	11:29:59	1.333	89.000	106.00	2.000
23	11:35: 0	1.417	91.000	106.00	2.000
24	11:40: 0	1.500	93.000	106.00	2.000
25	11:43: 0	1.550	169.000	106.00	76.000
26	11:46: 0	1.600	291.000	106.00	122.000
27	11:49: 0	1.650	389.000	106.00	98.000
28	11:52: 0	1.700	418.000	106.00	29.000
29	11:55: 0	1.750	430.000	106.00	12.000
30	11:58: 0	1.800	439.000	106.00	9.000
31	12: 1: 0	1.850	445.000	106.00	6.000
32	12: 4: 0	1.900	451.000	106.00	6.000
33	12: 7: 0	1.950	455.000	106.00	4.000
34	12:10: 0	2.000	458.000	106.00	3.000

WESTERN TESTING CO. INC.

