

Superior Testers Enterprises, Inc.

R.R. 3, Box 295B, Great Bend, Kansas 67530

(316) 792-6902

Date 9 14 93 Location C SENE 15-21-34^S Elevation 2969^{ft} County FINNEY

Company MUSTANG OIL & GAS Corp Number of Copies 5

Charts Mailed to 100 S MAIN WICHITA Kc 67203

Drilling Contractor MURFIN Drilling R.O. 20

Length Drill Pipe 4177 I.D. Drill Pipe 3.80 Tool Joint Size 4 1/2 XH

Length Weight Pipe NONE I.D. Weight Pipe NONE Tool Joint Size NONE

Length Drill Collars 148 I.D. Drill Collars 2.25 Tool Joint Size 4 1/2 XH

Top Packer Depth 4343 Bottom Packer Depth 4348 Number of Packers TOP Packer Size 6 3/4

TESTED FROM 4348 TO 4365 ANCHOR LENGTH 17 TOTAL DEPTH 4365 Hole Size 7 1/8

LEASE & WELL NO. Schmitz 1-15 FORMATION TESTED MARMATON TEST NO. 1

Mud Weight 9.0 Viscosity 47 Water Loss 9.6 Chlorides - Pits 2000 D.S.T. _____

Maximum Temp. 111 °F Initial Hydrostatic Pressure (A) 2094 P.S.I. Final Hydrostatic Pressure (H) 2073 P.S.I.

Tool Open I.F.P. from 600 m to 630 m 30 min

from [B] <u>31</u>	P.S.I. to [C] <u>31</u>	P.S.I.
[D] _____	<u>94</u>	P.S.I.
from [E] <u>31</u>	P.S.I. to [F] <u>31</u>	P.S.I.
[G] _____	<u>63</u>	P.S.I.

Tool Closed I.C.I.P. from 630 m to 700 m 90 min

Tool Open F.F.P. from 700 m to 730 m 30 min

Tool Closed F.C.I.P. from 730 m to 800 m 30 min

Initial Blow WEAK BLOW Building slowly

Final Blow Went Blow off Top Died 14" INTO opening

Total Feet Recovered 20 slightly oil cut mud 4% oil Gravity of Oil _____ Corrected _____

Feet of _____	% Gas _____	% Oil _____	% Mud _____	% Water _____
Feet of _____	% Gas _____	% Oil _____	% Mud _____	% Water _____
Feet of _____	% Gas _____	% Oil _____	% Mud _____	% Water _____
Feet of _____	% Gas _____	% Oil _____	% Mud _____	% Water _____
Feet of _____	% Gas _____	% Oil _____	% Mud _____	% Water _____
Feet of _____	% Gas _____	% Oil _____	% Mud _____	% Water _____
Feet of _____	% Gas _____	% Oil _____	% Mud _____	% Water _____
Feet of _____	% Gas _____	% Oil _____	% Mud _____	% Water _____
Feet of _____	% Gas _____	% Oil _____	% Mud _____	% Water _____
Feet of _____	% Gas _____	% Oil _____	% Mud _____	% Water _____

ORIGINAL

Remarks _____

Extra Equipment - Jars Yes Safety Joint Yes Extra Packer NONE Straddle NONE Hook Wall NONE

Top Recorder No. 13561 Clock No. 13056 Depth 43 59 Cir. Sub _____ Sampler NONE

Bottom Recorder No. 3875 Clock No. 27937 Depth 47 62 Insurance N/A

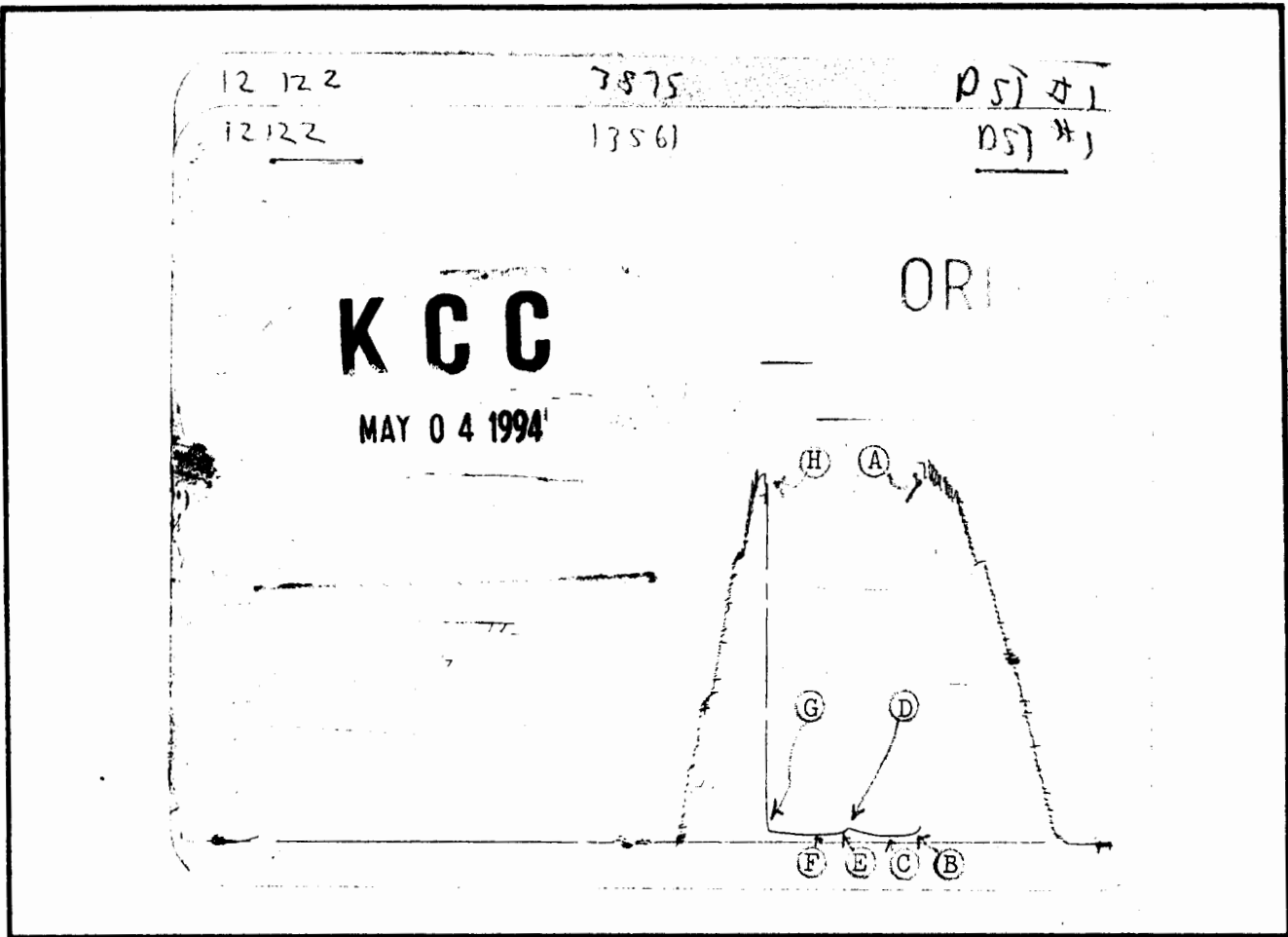
Price of Job _____

Tool Operator PAT STEVENSON

Approved By _____
NO 12122

Superior Testers Enterprises, Inc. shall not be liable for damage of any kind to the property or personnel of the one for whom a test is made, or for any loss suffered or sustained, directly or indirectly, through the use of its equipment, or its statements or opinion concerning the results of any test. Tools lost or damaged in the hole shall be paid for at cost by the party for whom the test is made.

API# 15-055-21237



This is an actual photograph of recorder chart.

POINT	PRESSURE		
	FIELD READING	OFFICE READING	
(A) Initial Hydrostatic Mud	<u>2094</u>	<u>2129</u>	P.S.I.
(B) First Initial Flow Pressure	<u>31</u>	<u>69</u>	P.S.I.
(C) First Final Flow Pressure	<u>31</u>	<u>38</u>	P.S.I.
(D) Initial Closed-in Pressure	<u>94</u>	<u>82</u>	P.S.I.
(E) Second Initial Flow Pressure	<u>31</u>	<u>55</u>	P.S.I.
(F) Second Final Flow Pressure	<u>31</u>	<u>44</u>	P.S.I.
(G) Final Closed-in Pressure	<u>63</u>	<u>64</u>	P.S.I.
(H) Final Hydrostatic Mud	<u>2073</u>	<u>2061</u>	P.S.I.

SUPERIOR TESTERS ENTERPRISES INC.

ORIGINAL

WELL IDENTIFICATION DATA

COMPANY : MUSTANG OIL AND GAS CORP. WELL NAME : SCHMITZ #1-15
ADDRESS : 100 S.MAIN,WICHITA LOCATION : C-SE-NE 15-21S-34W
STATE & COUNTY : KANSAS,FINNEY FIELD :
ELEV.(GR) : (KB) : 2969 TEST DATE : 9-14-1993

EQUIPMENT AND HOLE DATA

FORMATION TESTED : MARMATON DRILL PIPE LENGTH(ft) : 4173
TEST INT. KB : 4348 to 4365 DRILL PIPE O.D.(in) : 3.82
ANCHOR LENGTH(ft) : 17 WEIGHT PIPE LENGTH(ft) :
TYPE OF TEST : Conventional WEIGHT PIPE ID : 2.75
TOTAL DEPTH(ft-kb) : 4365 DRILL COLLAR LENGTH(ft) : 148
MAIN HOLE SIZE(in) : 7 7/8 DRILL COLLAR I.D.(in) : 2.259
MUD WEIGHT : 9.0 TOP PACKER DEPTH(kb) : 4343
MUD VISCOSITY : 47 BOTTOM PACKER DEPTH(kb) : 4348
MUD CHLORIDES : 2000 DUAL PACKERS :
SURFACE CHOKE : 3/4 PACKER SIZE(in) : 6 3/4
BOTTOM CHOKE(in) : 3/4 PACKER HOLD : Yes
TOOL SIZE(O.D.) : 5 1/2 TOOL PLUG : No
TOOL JOINT SIZE(F.H.) : 4 1/2 REVERSED OUT : No
RESERVOIR TEMPERATURE(F) : 111 TEST TICKET NUMBER : 12122

EXTRA EQUIPMENT : -JARS -SAFETY JOINT

ELEMENT SERIAL NO. : 13561
RANGE : 0 - 4175 CLOCK RANGE : 12 HOURS
CAL. EQU. : 1048.18 * Defl. + .46

SURFACE BLOW

1st Opening : WEAK BLOW BUILT TO 3/4 INCH INTO THE WATER
2nd Opening : WEAK BLOW DIED IN 14 MINUTES

RECOVERY

Recovered 20 feet of SLIGHTLY OIL CUT MUD 4% OIL

REMARKS :

WITNESSED BY : ARDEN RATZLAFF TOOL OPERATOR : PAT STEVENSON

INTERPRETATION BY : SUPERIOR TESTERS ENTERPRISES INC.

SUPERIOR TESTERS ENTERPRISES INC.

SUBSURFACE PRESSURE MEASUREMENTS

COMPANY : MUSTANG OIL AND GAS CORP. WELL NAME : SCHMITZ #1-15
 DATE OF TEST : 9-14-1993 LOCATION : C-SE-NE 15-21S-34W
 DEPTH : 4359.0 SERIAL NO. : 13561

COMMENTS	TIME min	DEFL in	PRESSURE PSIG		
			----- CALC	CORR	CORRECTED
TEST NO.:1					
Depth : 4359.0 ft-kb					
-1ST HYDROSTATIC	0.0	2.033	2131.41	-1.93	2129.47
-6:00 1ST FLOW	0.0	.066	69.64	-.31	69.33
- 6:05	5.0	.050	52.87	-.35	52.52
- 6:10	10.0	.039	41.34	-.38	40.97
- 6:15	15.0	.037	39.25	-.38	38.87
- 6:20	20.0	.037	39.25	-.38	38.87
- 6:25	25.0	.037	39.25	-.38	38.87
- 6:30	30.0	.037	39.25	-.38	38.87
-6:30 END FLOW	0.0	.037	39.25	-.38	38.87
- 6:35	5.0	.038	40.29	-.38	39.92
- 6:40	10.0	.041	43.44	-.37	43.07
- 6:45	15.0	.049	51.82	-.35	51.47
- 6:50	20.0	.058	61.26	-.33	60.92
- 6:55	25.0	.070	73.84	-.31	73.53
- 7:00	30.0	.079	83.27	-.29	82.98
-7:00 1ST SHUT-IN	0.0	.079	83.27	-.29	82.98
-7:00 2ND FLOW	0.0	.053	56.02	-.34	55.67
- 7:05	5.0	.051	53.92	-.35	53.57
- 7:10	10.0	.047	49.73	-.36	49.37
- 7:15	15.0	.045	47.63	-.36	47.27
- 7:20	20.0	.042	44.49	-.37	44.12
- 7:25	25.0	.042	44.49	-.37	44.12
- 7:30	30.0	.042	44.49	-.37	44.12
-7:30 END FLOW	0.0	.042	44.49	-.37	44.12
- 7:35	5.0	.042	44.49	-.37	44.12
- 7:40	10.0	.043	45.53	-.37	45.17
- 7:45	15.0	.045	47.63	-.36	47.27
- 7:50	20.0	.049	51.82	-.35	51.47
- 7:55	25.0	.051	53.92	-.35	53.57
- 8:00	30.0	.061	64.40	-.33	64.08
-8:00 2ND SHUT-IN	0.0	.061	64.40	-.33	64.08
-2ND HYDROSTATIC	0.0	1.968	2063.28	-2.22	2061.05

Superior Testers Enterprises, Inc.

R.R. 3, Box 295B, Great Bend, Kansas 67530

(316) 792-6902

Date 9 15 93 Location C SE NE 15 21^S-34^W Elevation 2969 ^{KG} County FINNEY

Company MUSTANG OIL & GAS CORP. Number of Copies 5

Charts Mailed to 100 S MAIN WICHITA KS 67202

Drilling Contractor MURFIN RIG 20'

Length Drill Pipe 4243 I.D. Drill Pipe 3 80 Tool Joint Size 4 1/2 X 4

Length Weight Pipe NONE I.D. Weight Pipe NONE Tool Joint Size NONE

Length Drill Collars 148 I.D. Drill Collars 2.25 Tool Joint Size 4 1/2 X 4

Top Packer Depth 4360 Bottom Packer Depth 4365 Number of Packers TWO Packer Size 6 3/4

TESTED FROM 4365 TO 4438 ANCHOR LENGTH 73 TOTAL DEPTH 4438 Hole Size 7 7/8

LEASE & WELL NO. SCHMITZ 1-U FORMATION TESTED MARNTON TEST NO. 2

Mud Weight 9.2 Viscosity 47 Water Loss 9.6 Chlorides - Pits 2000 D.S.T. _____

Maximum Temp. 113 °F Initial Hydrostatic Pressure (A) 2136 P.S.I. Final Hydrostatic Pressure (H) 215 P.S.I.

Tool Open I.F.P. from 1200 m to 1230 m 30 min

Tool Closed I.C.I.P. from 1230 m to 100 m 30 min

Tool Open F.F.P. from 100 m to 130 m 30 min

Tool Closed F.C.I.P. from 130 m to 200 m 30 min

Initial Blow WEAK BLOW 1/2" INTO WATER

Final Blow NO BLOW

Total Feet Recovered 15' Drilling MVP slight show of oil Gravity of Oil _____ Corrected _____

Feet of	% Gas	% Oil	% Mud	% Water
_____	_____	_____	_____	_____
_____	_____	_____	_____	_____
_____	_____	_____	_____	_____
_____	_____	_____	_____	_____
_____	_____	_____	_____	_____
_____	_____	_____	_____	_____
_____	_____	_____	_____	_____
_____	_____	_____	_____	_____
_____	_____	_____	_____	_____
_____	_____	_____	_____	_____

ORIGINAL

Remarks _____

Extra Equipment - Jars yes Safety Joint yes Extra Packer none Straddle none Hook Wall none

Top Recorder No. 12561 Clock No. 13056 Depth 4432 Cir. Sub. — Sampler none

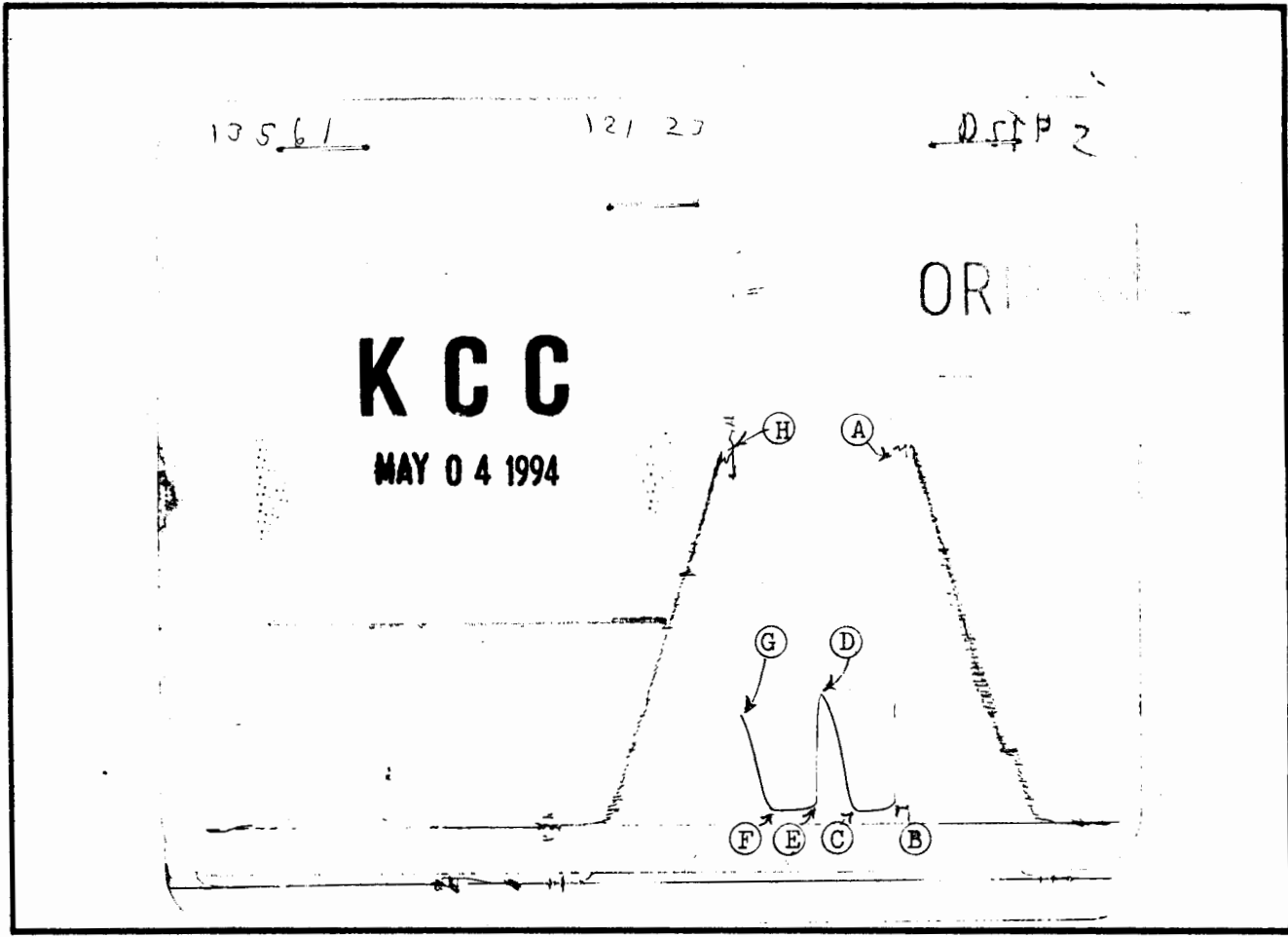
Bottom Recorder No. 2815 Clock No. 23937 Depth 4425 Insurance N/A

Price of Job _____
Tool Operator PAY STEVENSON

Approved By _____
NS 12123

Superior Testers Enterprises, Inc. shall not be liable for damage of any kind to the property or personnel of the one for whom a test is made, of for any loss suffered or sustained, directly or indirectly, through the use of its equipment, or its statements or opinion concerning the results of any test. Tools lost or damaged in the hole shall be paid for at cost by the party for whom the test is made.

API#15-055-21237



This is an actual photograph of recorder chart.

POINT	PRESSURE		
	FIELD READING	OFFICE READING	
(A) Initial Hydrostatic Mud	<u>2136</u>	<u>2138</u>	P.S.I.
(B) First Initial Flow Pressure	<u>94</u>	<u>114</u>	P.S.I.
(C) First Final Flow Pressure	<u>73</u>	<u>76</u>	P.S.I.
(D) Initial Closed-in Pressure	<u>714</u>	<u>735</u>	P.S.I.
(E) Second Initial Flow Pressure	<u>94</u>	<u>122</u>	P.S.I.
(F) Second Final Flow Pressure	<u>73</u>	<u>84</u>	P.S.I.
(G) Final Closed-in Pressure	<u>598</u>	<u>614</u>	P.S.I.
(H) Final Hydrostatic Mud	<u>2115</u>	<u>2100</u>	P.S.I.

01111111

SUPERIOR TESTERS ENTERPRISES INC.

WELL IDENTIFICATION DATA

COMPANY : MUSTANG OIL AND GAS CORP. WELL NAME : SCHMITZ #1-15
 ADDRESS : 100 S.MAIN,WICHITA LOCATION : C-SE-NE 15-21S-34W
 STATE & COUNTY : KANSAS,FINNEY FIELD :
 ELEV.(GR) : (KB) : 2969 TEST DATE : 9-15-1993

EQUIPMENT AND HOLE DATA

FORMATION TESTED : MARMATON DRILL PIPE LENGTH(ft) : 4243
 TEST INT. KB : 4365 to 4438 DRILL PIPE O.D.(in) : 3.82
 ANCHOR LENGTH(ft) : 73 WEIGHT PIPE LENGTH(ft) :
 TYPE OF TEST : Conventional WEIGHT PIPE ID : 2.75
 TOTAL DEPTH(ft-kg) : 4438 DRILL COLLAR LENGTH(ft) : 148
 MAIN HOLE SIZE(in) : 7 7/8 DRILL COLLAR I.D.(in) : 2.259
 MUD WEIGHT : 9.2 TOP PACKER DEPTH(kb) : 4360
 MUD VISCOSITY : 47 BOTTOM PACKER DEPTH(kb) : 4365
 MUD CHLORIDES : 2000 DUAL PACKERS :
 SURFACE CHOKE : 3/4 PACKER SIZE(in) : 6 3/4
 BOTTOM CHOKE(in) : 3/4 PACKER HOLD : Yes
 TOOL SIZE(O.D.) : 5 1/2 TOOL PLUG : No
 TOOL JOINT SIZE(F.H.) : 4 1/2 REVERSED OUT : No
 RESERVOIR TEMPERATURE(F) : 113 TEST TICKET NUMBER : 1123

EXTRA EQUIPMENT : -JARS -SAFETY JOINT

ELEMENT SERIAL NO. : 13561
 RANGE : 0 - 4175 CLOCK RANGE : 12 HOURS
 CAL. EQU. : 1048.18 * Defl. + .46

SURFACE BLOW

1st Opening : WEAK BLOW BUILT TO 1/4 INCH INTO THE WATER
 2nd Opening : NO BLOW

RECOVERY

Recovered 15 feet of DRILLING MUD WITH A SLIGHT SHOW OF OIL

REMARKS :

WITNESSED BY : ARDEN RATZLAFF TOOL OPERATOR : PAT STEVENSON

INTERPRETATION BY : SUPERIOR TESTERS ENTERPRISES INC.

ORIGINAL

SUPERIOR TESTERS ENTERPRISES INC.

SUBSURFACE PRESSURE MEASUREMENTS

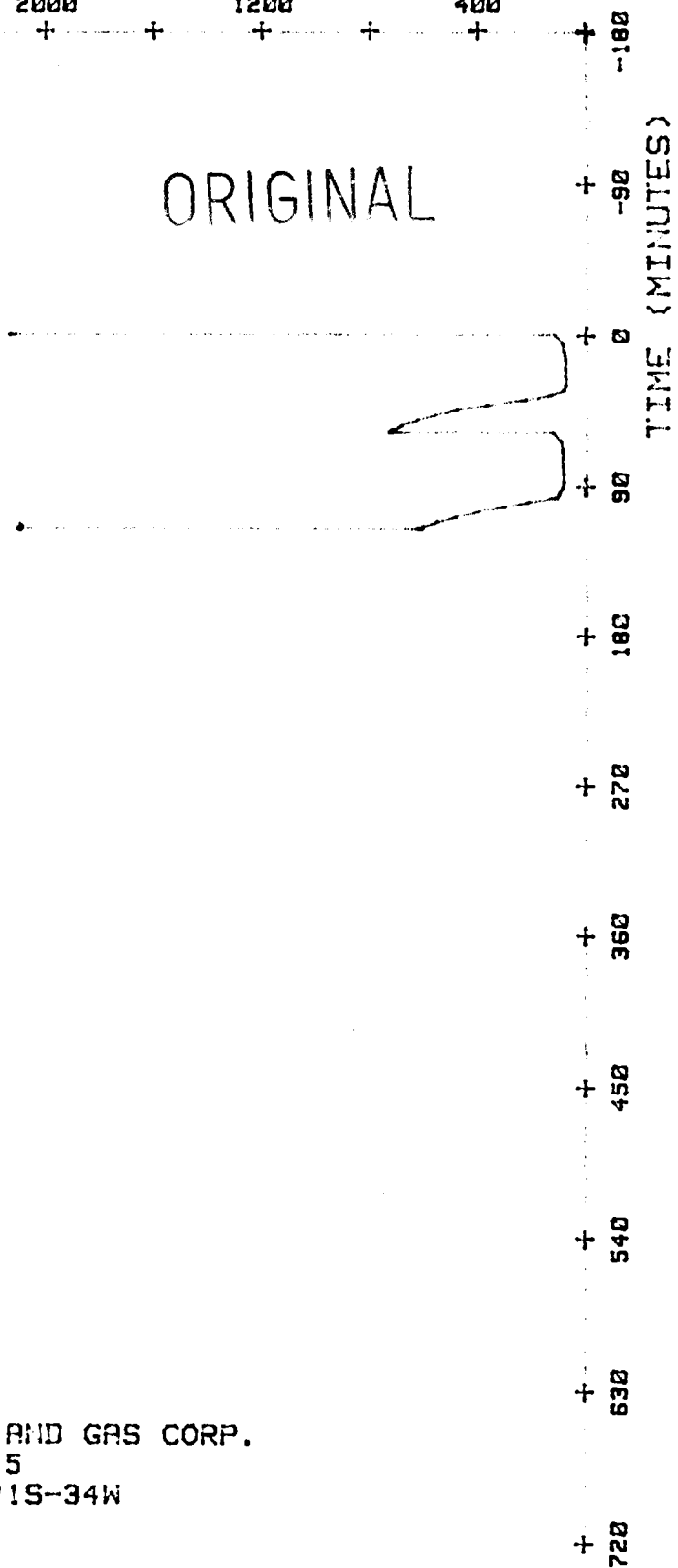
COMPANY : MUSTANG OIL AND GAS CORP. WELL NAME : SCHMITZ #1-15
 DATE OF TEST : 9-15-1993 LOCATION : C-SE-NE 15-21S-34W
 DEPTH : 4432.0 SERIAL NO. : 13561

COMMENTS	TIME min	DEFL in	PRESSURE PSIG		
			----- CALC	CORR	----- CORRECTED
TEST NO.:2					
Depth : 4432.0 ft-kb					
-1ST HYDROSTATIC	0.0	2.042	2140.84	-1.89	2138.95
-12:00 1ST FLOW	0.0	.109	114.71	-.22	114.50
- 12:05	5.0	.087	91.65	-.27	91.39
- 12:10	10.0	.080	84.32	-.28	84.03
- 12:15	15.0	.074	78.03	-.30	77.73
- 12:20	20.0	.074	78.03	-.30	77.73
- 12:25	25.0	.073	76.98	-.30	76.68
- 12:30	30.0	.073	76.98	-.30	76.68
-12:30 END FLOW	0.0	.073	76.98	-.30	76.68
- 12:33	3.0	.081	85.37	-.28	85.08
- 12:36	6.0	.125	131.48	-.18	131.30
- 12:39	9.0	.218	228.97	.03	228.99
- 12:42	12.0	.351	368.37	.32	368.70
- 12:45	15.0	.460	482.62	.57	483.19
- 12:48	18.0	.538	564.38	.74	565.13
- 12:51	21.0	.601	630.42	.89	631.30
- 12:54	24.0	.655	687.02	1.01	688.03
- 12:57	27.0	.692	725.80	1.09	726.89
- 12:58	28.0	.700	734.19	1.11	735.29
-12:58 1ST SHUT-IN	0.0	.700	734.19	1.11	735.29
12:58 2ND FLOW	0.0	.117	123.10	-.20	122.90
- 13:03	5.0	.092	96.90	-.26	96.64
- 13:08	10.0	.085	89.56	-.27	89.29
- 13:13	15.0	.084	88.51	-.27	88.24
- 13:18	20.0	.084	88.51	-.27	88.24
- 13:23	25.0	.080	84.32	-.28	84.03
- 13:28	30.0	.080	84.32	-.28	84.03
-1:28 END FLOW	0.0	.080	84.32	-.28	84.03
- 1:31	3.0	.084	88.51	-.27	88.24
- 1:34	6.0	.097	102.14	-.25	101.89
- 1:37	9.0	.105	110.52	-.23	110.29
- 1:40	12.0	.208	218.48	0.00	218.49
- 1:43	15.0	.291	305.48	.19	305.67
- 1:46	18.0	.387	406.11	.41	406.51
- 1:49	21.0	.462	484.72	.57	485.29
- 1:52	24.0	.530	556.00	.73	556.72
- 1:55	27.0	.579	607.36	.84	608.19
- 1:56	28.0	.585	613.65	.85	614.50
-1:56 2ND SHUT-IN	0.0	.585	613.65	.85	614.50
-2ND HYDROSTATIC	0.0	2.005	2102.06	-2.06	2100.00

PRESSURE (P S I G)

4000 3200 2400 1600 800 0
 + + + + + + + +

ORIGINAL



COMPANY : MUSTANG OIL AND GAS CORP.
 WELL : SCHMITZ #1-15
 LOCATION : C-SE-NE 15-21S-34W
 DATE : 9-15-1993
 GAUGE # : 13561

TIME (MINUTES)
 -180
 -90
 0
 90
 180
 270
 360
 450
 540
 630
 720

Superior Testers Enterprises, Inc.

R.R. 3, Box 295B, Great Bend, Kansas 67530

(316) 792-6902

Date 9 16 93 Location 15 21^S-34^W Elevation 2969^{ft} County FINNEY

Company MUSTANG OIL & GAS Corp Number of Copies 5

Charts Mailed to 100 S MAIN, WICHITA KS 67202

Drilling Contractor MURFIN RIG 20th

Length Drill Pipe 4453 I.D. Drill Pipe 3.80 Tool Joint Size 4 1/2 X 1 1/2

Length Weight Pipe none I.D. Weight Pipe none Tool Joint Size none

Length Drill Collars 148 I.D. Drill Collars 2.25 Tool Joint Size 4 1/2 X 1 1/2

Top Packer Depth 4701 Bottom Packer Depth 4706 Number of Packers Two Packer Size 6 3/4

TESTED FROM 4706 TO 4720 ANCHOR LENGTH 14 TOTAL DEPTH 4720 Hole Size 7 3/8

LEASE & WELL NO. Schmitz 1-15 FORMATION TESTED MISS TEST NO. 3

Mud Weight 9.3 Viscosity 44 Water Loss 11.2 Chlorides - Pits 3,000 D.S.T. _____

Maximum Temp. 110 °F Initial Hydrostatic Pressure (A) 2360 P.S.I. Final Hydrostatic Pressure (H) 2375 P.S.I.

Tool Open I.F.P. from 1030 m to 1100 m 30 min

Tool Closed I.C.I.P. from 1100 m to 1145 m 45 min

Tool Open F.F.P. from 1145 m to 1245 m 60 min

Tool Closed F.C.I.P. from 1245 m to 215 m 90 min

from [B] <u>84</u> P.S.I. to [C] <u>73</u> P.S.I.
[D] <u>1060</u> P.S.I.
from [E] <u>105</u> P.S.I. to [F] <u>105</u> P.S.I.
[G] <u>1070</u> P.S.I.

Initial Blow WEAK Building slowly off Bottom 24ⁱⁿ

Final Blow WEAK Building slowly off Bottom 174

Total Feet Recovered 540 GAIN IN pip 195' OIL CUT MUD Gravity of Oil 33 Corrected

75 Feet of Clean oil 8 % Gas 90 % Oil 2 % Mud _____ % Water

60 Feet of OIL & GAS CUT MUD 18 % Gas 10 % Oil 72 % Mud _____ % Water

60 Feet of oil cut mud 0 % Gas 12 % Oil 88 % Mud _____ % Water

_____ Feet of _____ % Gas _____ % Oil _____ % Mud _____ % Water

_____ Feet of _____ % Gas _____ % Oil _____ % Mud _____ % Water

_____ Feet of _____ % Gas _____ % Oil _____ % Mud _____ % Water

_____ Feet of _____ % Gas _____ % Oil _____ % Mud _____ % Water

_____ Feet of _____ % Gas _____ % Oil _____ % Mud _____ % Water

_____ Feet of _____ % Gas _____ % Oil _____ % Mud _____ % Water

ORIGINAL

Remarks _____

Extra Equipment - Jars yes Safety Joint yes Extra Packer none Straddle none Hook Wall none

Top Recorder No. 12561 Clock No. 12056 Depth 4714 Cir. Sub _____ Sampler none

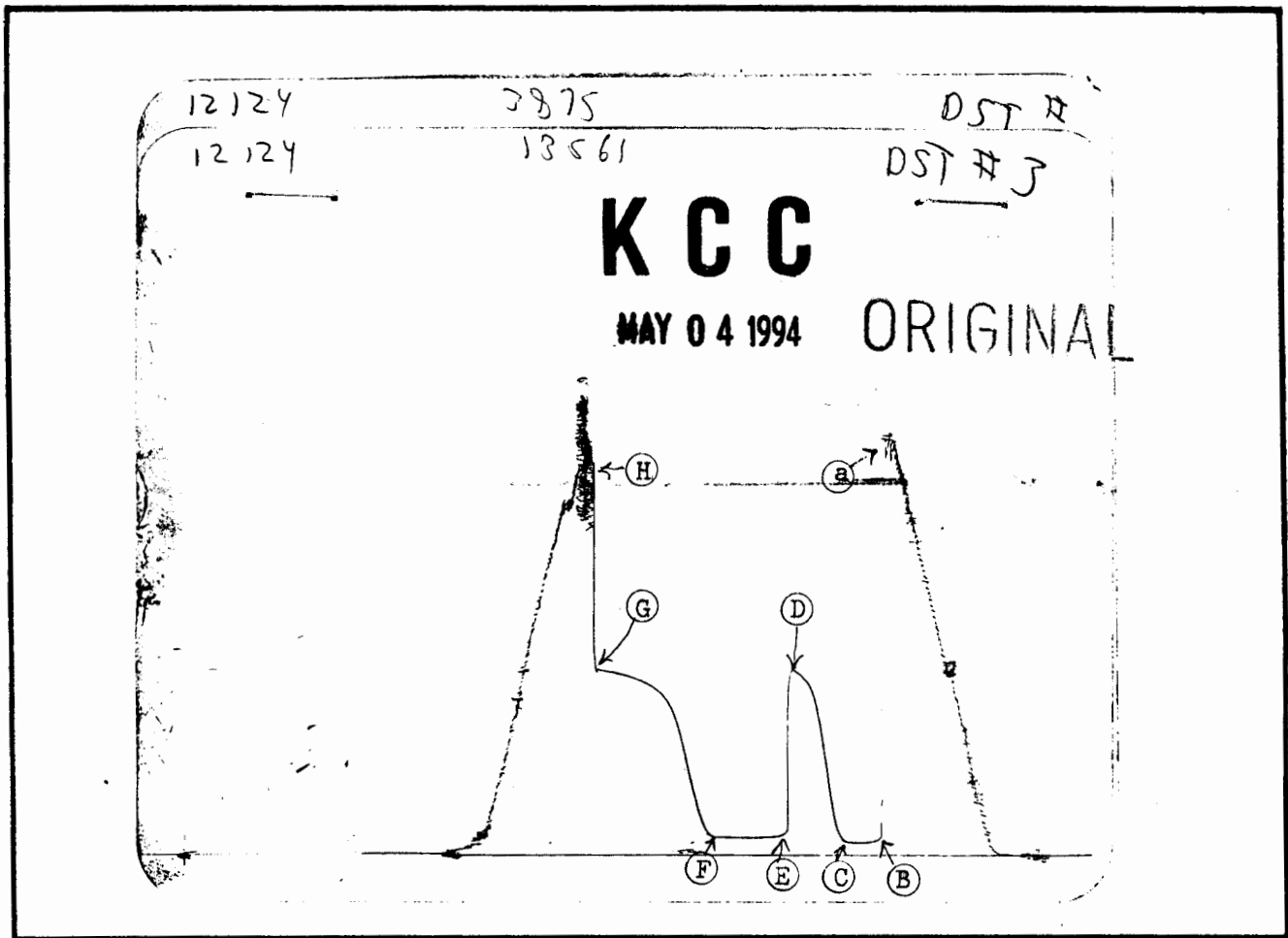
Bottom Recorder No. 2825 Clock No. 27937 Depth 4717 Insurance NA

Price of Job _____

Tool Operator PAT STEVENSON

Approved By NO 12124

Superior Testers Enterprises, Inc. shall not be liable for damage of any kind to the property or personnel of the one for whom a test is made, or for any loss suffered or sustained, directly or indirectly, through the use of its equipment, or its statements or opinion concerning the results of any test. Tools lost or damaged in the hole shall be paid for at cost by the party for whom the test is made.



This is an actual photograph of recorder chart.

POINT	PRESSURE		
	FIELD READING	OFFICE READING	
(A) Initial Hydrostatic Mud	<u>2360</u>	<u>2364</u>	P.S.I.
(B) First Initial Flow Pressure	<u>84</u>	<u>105</u>	P.S.I.
(C) First Final Flow Pressure	<u>73</u>	<u>71</u>	P.S.I.
(D) Initial Closed-in Pressure	<u>1060</u>	<u>1060</u>	P.S.I.
(E) Second Initial Flow Pressure	<u>105</u>	<u>140</u>	P.S.I.
(F) Second Final Flow Pressure	<u>105</u>	<u>107</u>	P.S.I.
(G) Final Closed-in Pressure	<u>1070</u>	<u>1058</u>	P.S.I.
(H) Final Hydrostatic Mud	<u>2345</u>	<u>2323</u>	P.S.I.

ORIGINAL

SUPERIOR TESTERS ENTERPRISES INC.

WELL IDENTIFICATION DATA

COMPANY : MUSTANG OIL AND GAS CORP. WELL NAME : SCHMITZ #1-15
ADDRESS : 100 S.MAIN.WICHITA LOCATION : C-SE-NE 15-21S-34W
STATE & COUNTY : KANSAS,FINNEY FIELD :
ELEV.(GR) : (KB) : 2969 TEST DATE : 9-16-1993

EQUIPMENT AND HOLE DATA

FORMATION TESTED : MISSISSIPPI DRILL PIPE LENGTH(ft) : 4453
TEST INT. KB : 4706 to 4720 DRILL PIPE O.D.(in) : 3.82
ANCHOR LENGTH(ft) : 14 WEIGHT PIPE LENGTH(ft) :
TYPE OF TEST : Conventional WEIGHT PIPE ID : 2.75
TOTAL DEPTH(ft-kg) : 4720 DRILL COLLAR LENGTH(ft) : 148
MAIN HOLE SIZE(in) : 7 7/8 DRILL COLLAR I.D.(in) : 2.259
MUD WEIGHT : 9.3 TOP PACKER DEPTH(kb) : 4701
MUD VISCOSITY : 44 BOTTOM PACKER DEPTH(kb) : 4706
MUD CHLORIDES : 3000 DUAL PACKERS :
SURFACE CHOKE : 3/4 PACKER SIZE(in) : 6 3/4
BOTTOM CHOKE(in) : 3/4 PACKER HOLD : Yes
TOOL SIZE(O.D.) : 5 1/2 TOOL PLUG : No
TOOL JOINT SIZE(F.H.) : 4 1/2 REVERSED OUT : No
RESERVOIR TEMPERATURE(F) : 110 TEST TICKET NUMBER : 12124

EXTRA EQUIPMENT : -JARS -SAFETY JOINT

ELEMENT SERIAL NO. : 13561
RANGE : 0 - 4175 CLOCK RANGE :
CAL. EQU. : 1048.18 * Defl. + .46

SURFACE BLOW

1st Opening : WEAK BLOW BUILT TO BOTTOM OF THE BUCKET IN 24 MIN.
2nd Opening : WEAK BLOW BUILT TO BOTTOM OF THE BUCKET IN 17 MIN.

RECOVERY

Recovered 540 feet of GAS IN THE PIPE
Recovered 75 feet of CLEAN GASSY OIL-GRAVITY 33 CORRECTED
Recovered 60 feet of OIL AND GAS CUT MUD
Recovered 60 feet of OIL CUT MUD

REMARKS :

WITNESSED BY : ARDEN RATZLAFF TOOL OPERATOR : PAT STEVENSON

INTERPRETATION BY : SUPERIOR TESTERS ENTERPRISES INC.

ORIGINAL

SUPERIOR TESTERS ENTERPRISES INC.

SUBSURFACE PRESSURE MEASUREMENTS

COMPANY : MUSTANG OIL AND GAS CORP. WELL NAME : SCHMITZ #1-15
 DATE OF TEST : 9-16-1993 LOCATION : C-SE-NE 15-21S-34W
 DEPTH : 4714.0 SERIAL NO. : 13561

COMMENTS	TIME min	DEFL in	PRESSURE PSIG		
			----- CALC	CORR	CORRECTED
TEST NO.:3					
Depth : 4714.0 ft-kb					
-1ST HYDROSTATIC	0.0	2.256	2365.15	-.94	2364.21
-10:30 1ST FLOW	0.0	.100	105.28	-.24	105.04
- 10:35	5.0	.077	81.17	-.29	80.88
- 10:40	10.0	.072	75.93	-.30	75.63
- 10:45	15.0	.069	72.79	-.31	72.48
- 10:50	20.0	.070	73.84	-.31	73.53
- 10:55	25.0	.070	73.84	-.31	73.53
- 11:00	30.0	.068	71.74	-.31	71.43
-11:00 END FLOW	0.0	.068	71.74	-.31	71.43
- 11:01	1.0	.075	79.08	-.29	78.78
- 11:02	2.0	.078	82.22	-.29	81.93
- 11:03	3.0	.082	86.41	-.28	86.13
- 11:04	4.0	.089	93.75	-.26	93.49
- 11:05	5.0	.097	102.14	-.25	101.89
- 11:06	6.0	.108	113.67	-.22	113.45
- 11:07	7.0	.123	129.39	-.19	129.20
- 11:08	8.0	.138	145.11	-.15	144.96
- 11:09	9.0	.162	170.27	-.10	170.17
- 11:10	10.0	.189	198.57	-.04	198.53
- 11:11	11.0	.237	248.88	.07	248.95
- 11:12	12.0	.271	284.52	.15	284.66
- 11:13	13.0	.325	341.12	.27	341.39
- 11:14	14.0	.373	391.43	.37	391.81
- 11:15	15.0	.407	427.07	.45	427.52
- 11:18	18.0	.567	594.78	.81	595.59
- 11:21	21.0	.716	750.96	1.14	752.10
- 11:24	24.0	.826	866.26	1.39	867.65
- 11:27	27.0	.896	939.63	1.55	941.18
- 11:30	30.0	.936	981.56	1.64	983.19
- 11:33	33.0	.960	1006.71	1.64	1008.35
- 11:36	36.0	.980	1027.68	1.55	1029.23
- 11:39	39.0	.996	1044.45	1.48	1045.93
- 11:42	42.0	1.010	1059.12	1.42	1060.54
-11:42 1ST SHUT-IN	0.0	1.010	1059.12	1.42	1060.54
-11:42 2ND FLOW	0.0	.134	140.92	-.16	140.76
- 11:47	5.0	.109	114.71	-.22	114.50
- 11:52	10.0	.102	107.38	-.23	107.14
- 11:57	15.0	.101	106.33	-.24	106.09
- 12:02	20.0	.100	105.28	-.24	105.04
- 12:07	25.0	.100	105.28	-.24	105.04

011111

SUPERIOR TESTERS ENTERPRISES INC.

SUBSURFACE PRESSURE MEASUREMENTS

COMPANY : MUSTANG OIL AND GAS CORP. WELL NAME : SCHMITZ #1-15
DATE OF TEST : 9-16-1993 LOCATION : C-SE-NE 15-21S-34W
DEPTH : 4714.0 SERIAL NO. : 13561

Table with columns: COMMENTS, TIME min, DEFL in, CALC, PRESSURE PSIG CORR, CORRECTED. Rows include test data from 12:12 to 13:48.

ORIGINAL

SUPERIOR TESTERS ENTERPRISES INC.

SUBSURFACE PRESSURE MEASUREMENTS

COMPANY : MUSTANG OIL AND GAS CORP. WELL NAME : SCHMITZ #1-15
DATE OF TEST : 9-16-1993 LOCATION : C-SE-NE 15-21S-34W
DEPTH : 4714.0 SERIAL NO. : 13561

COMMENTS	TIME min	DEFL in	PRESSURE PSIG		
			----- CALC	CORR	CORRECTED
TEST NO.:3					
- 13:51	69.0	.978	1025.58	1.56	1027.14
- 13:54	72.0	.983	1030.82	1.54	1032.36
- 13:57	75.0	.988	1036.06	1.52	1037.58
- 14:00	78.0	.993	1041.30	1.49	1042.80
- 14:03	81.0	.998	1046.54	1.47	1048.02
- 14:06	84.0	1.001	1049.69	1.46	1051.15
- 14:09	87.0	1.004	1052.83	1.45	1054.28
- 14:12	90.0	1.008	1057.03	1.43	1058.46
-2:12 2ND SHUT-IN	0.0	1.008	1057.03	1.43	1058.46
-2ND HYDROSTATIC	0.0	2.217	2324.27	-1.11	2323.16

CALCULATED RECOVERY ANALYSIS

ORIGINAL

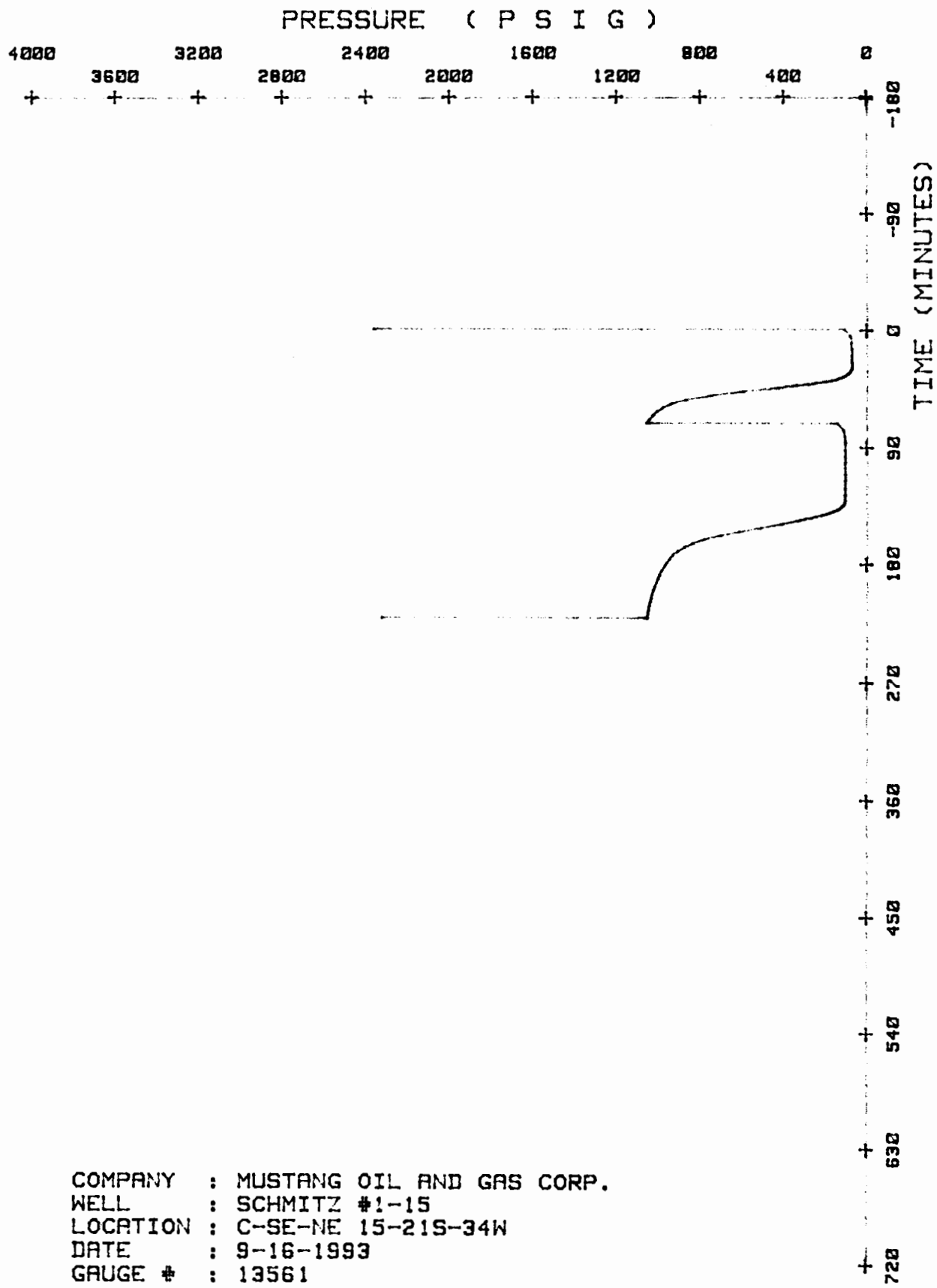
DST Number:3

Test ticket number:12124

Sample #	Total Feet	***** Gas **** %	***** Gas **** Feet	***** Oil **** %	***** Oil **** Feet	***** Mud **** %	***** Mud **** Feet
1	540	100.00	540.00	0.00	0.00	0.00	0.00
2	75	8.00	6.00	90.00	67.50	2.00	1.50
3	60	18.00	10.80	10.00	6.00	72.00	43.20
4	60	0.00	0.00	12.00	7.20	88.00	52.80
TOTAL	735	75.76	556.80	10.98	80.70	13.27	97.50

Sample #	Total Feet	**** WATER **** %	**** WATER **** Feet	Chlorides (ppm)	Resistivity (ohms)	Temperature (deg)
1	540	0.00	0.00	0.00	0.00	0.00
2	75	0.00	0.00	0.00	0.00	0.00
3	60	0.00	0.00	0.00	0.00	0.00
4	60	0.00	0.00	0.00	0.00	0.00
TOTAL	735	0.00	0.00			

INTERPRETATION BY : SUPERIOR TESTERS ENTERPRISES, INC.



COMPANY : MUSTANG OIL AND GAS CORP.
 WELL : SCHMITZ #1-15
 LOCATION : C-SE-NE 15-21S-34W
 DATE : 9-16-1993
 GAUGE # : 13561

GAUGE # : 13561

DATE : 9-16-1993

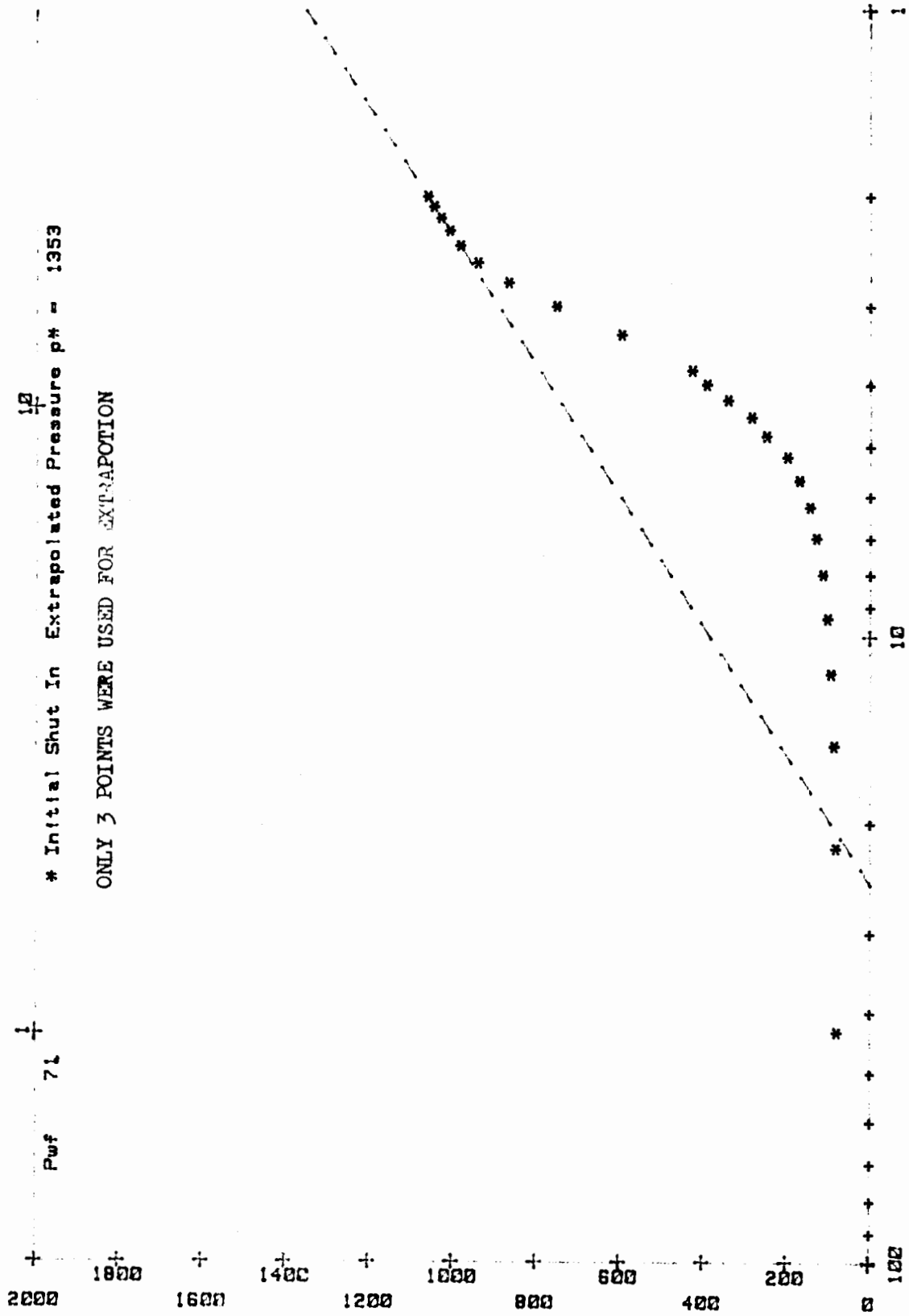
LOCATION : C-SE-NE 15-21S-34W

Pwf 71 $\frac{1}{2}$ * Initial Shut In Extrapolated Pressure p* = 1353

ONLY 3 POINTS WERE USED FOR EXTRAPOLATION

PRESSURE (CORRECTED, PSI)

ORIGINAL



TIME (MINUTES) : (T+dt)/dt - (Semi log scale)

SUPERIOR TESTERS ENTERPRISES INC.

HORNER ANALYSIS

ORIGINAL

COMPANY : MUSTANG OIL AND GAS CORP.
 WELL NAME : SCHMITZ #1-15
 LOCATION : C-SE-NE 15-21S-34W
 STATE & COUNTY : KANSAS.FINNEY
 DATE OF TEST : 9-16-1993
 TEST INT. KB : 4706 to 4720
 TOTAL INTERVAL (ft) K.B. : 14.00
 ELEV.(GR) : (KB) : 2969
 FIELD :

ELEMENT SERIAL NO. : 13561
 LATEST CALIBRATION :

COMMENTS	TIME min	(T+dt)/dt min	----- PRESSURES CORR PSIG	-----
Refer. depth :	4714.0 ft-kb			
-11:00 END FLOW	0.00	0.00	71.43	
	1.00	43.00	78.78	
	2.00	22.00	81.93	
	3.00	15.00	86.13	
	4.00	11.50	93.49	
	5.00	9.40	101.89	
	6.00	8.00	113.45	
	7.00	7.00	129.20	
	8.00	6.25	144.96	
	9.00	5.67	170.17	
	10.00	5.20	198.53	
	11.00	4.82	248.95	
	12.00	4.50	284.66	
	13.00	4.23	341.39	
	14.00	4.00	391.81	
	15.00	3.80	427.52	
	18.00	3.33	595.59	
	21.00	3.00	752.10	
	24.00	2.75	867.65	
	27.00	2.56	941.18	
	30.00	2.40	983.19	
	33.00	2.27	1008.40	
	36.00	2.17	1029.41	
	39.00	2.08	1046.22	
	42.00	2.00	1060.92	
-11:42 1ST SHUT-IN	0.00	0.00	1060.92	

INTERPRETATION BY : SUPERIOR TESTERS ENTERPRISES. INC.

SUPERIOR TESTERS ENTERPRISES INC.

DATA SUMMARY

COMPANY : MUSTANG OIL AND GAS CORP. WELL NAME : SCHMITZ #1-15
DATE OF TEST : 9-16-1993 LOCATION : C-SE-NE 15-21S-34W
DST. NO : 3 SHUT-IN PERIOD : 1

INTERPRETIVE DATA (OIL)

EXTRAPOLATED RESERVOIR PRESSURE (psi):	1353.00
Slope of Build-up Curve (psi/log cycle):	967.46
Effective Producing Time (min):	42.00

INTERPRETATION BY : SUPERIOR TESTERS ENTERPRISES, INC.

GAUGE # : 13561

DATE : 9-16-1993

LOCATION : C-SE-NE 15-21S-34W

100

10

Pwf 107 X Final Shut In Extrapolated Pressure p* = 1258

15 POINTS WERE USED FOR EXTRAPOLATION

2000

1800

1600

1400

1200

1000

800

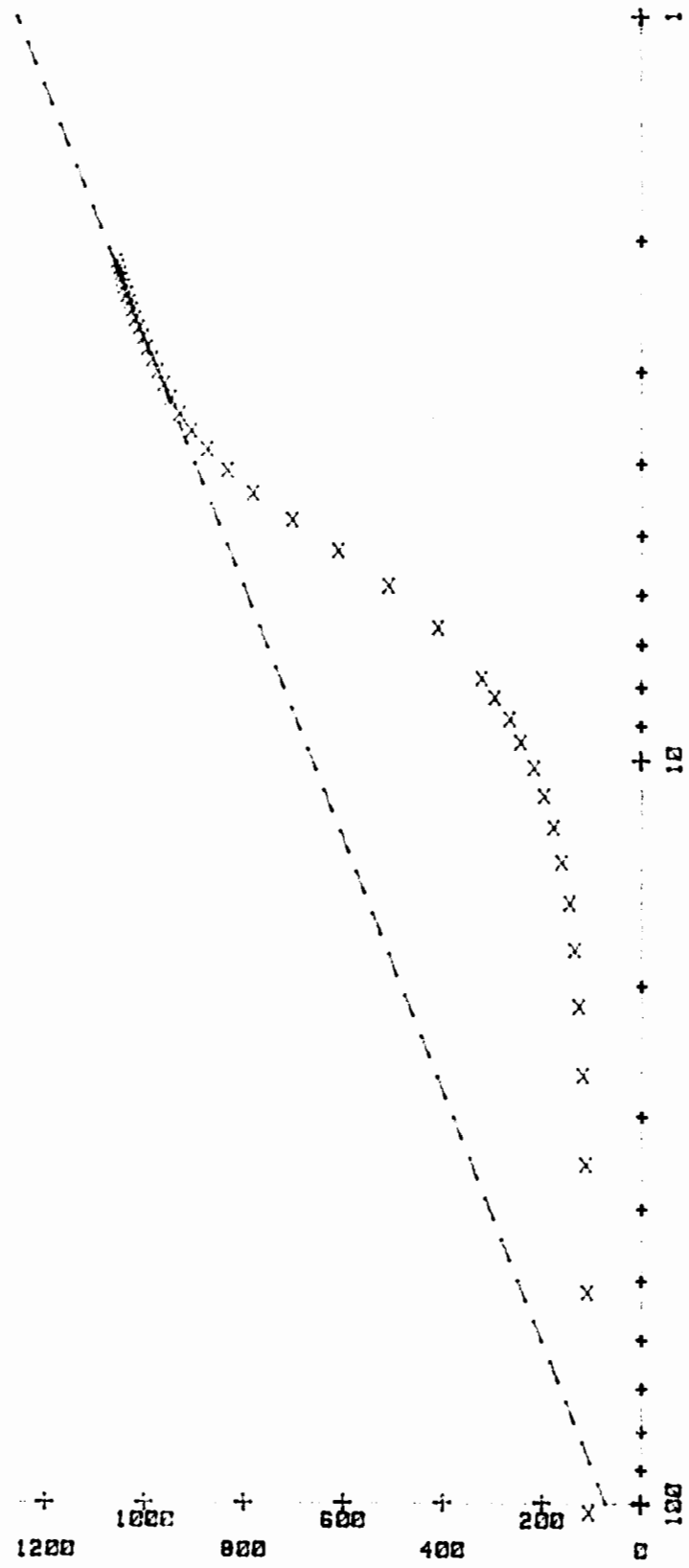
600

400

200

100

PRESSURE (CORRECTED, PSI)



TIME (MINUTES) : (T+dt)/dt - (Semilog scale)

SUPERIOR TESTERS ENTERPRISES INC.

HORNER ANALYSIS

ORIGINAL

COMPANY : MUSTANG OIL AND GAS CORP.
 WELL NAME : SCHMITZ #1-15
 LOCATION : C-SE-NE 15-21S-34W
 STATE & COUNTY : KANSAS.FINNEY
 DATE OF TEST : 9-16-1993
 TEST INT. KB : 4706 to 4720
 TOTAL INTERVAL (ft) K.B. : 14.00
 ELEV.(GR) : (KB) : 2969
 FIELD :

ELEMENT SERIAL NO. : 13561
 LATEST CALIBRATION :

COMMENTS	TIME min	(T+dt)/dt min	----- PRESSURES CORR PSIG	-----
----------	-------------	------------------	---------------------------------	-------

Refer. depth : 4714.0 ft-kb

-12:42 END FLOW	0.00	0.00	107.14	
	1.00	103.00	107.14	
	2.00	52.00	110.29	
	3.00	35.00	113.45	
	4.00	26.50	119.75	
	5.00	21.40	127.10	
	6.00	18.00	135.50	
	7.00	15.57	146.01	
	8.00	13.75	161.76	
	9.00	12.33	178.57	
	10.00	11.20	197.48	
	11.00	10.27	218.49	
	12.00	9.50	244.75	
	13.00	8.85	266.81	
	14.00	8.29	297.27	
	15.00	7.80	323.53	
	18.00	6.67	411.76	
	21.00	5.86	511.55	
	24.00	5.25	612.39	
	27.00	4.78	704.83	
	30.00	4.40	783.61	
	33.00	4.09	835.08	
	36.00	3.83	876.05	
	39.00	3.62	908.61	
	42.00	3.43	931.72	
	45.00	3.27	949.58	
	48.00	3.13	963.24	
	51.00	3.00	975.84	
	54.00	2.89	986.34	
	57.00	2.79	996.85	

INTERPRETATION BY : SUPERIOR TESTERS ENTERPRISES, INC.

SUPERIOR TESTERS ENTERPRISES INC.

HORNER ANALYSIS

COMPANY : MUSTANG OIL AND GAS CORP. WELL NAME : SCHMITZ #1-15
 DATE OF TEST : 9-16-1993 LOCATION : C-SE-NE 15-21S-34W
 REFERENCE DEPTH : 4714.0 SERIAL NO. : 13561

COMMENTS	TIME min	(T+dt)/dt min	----- PRESSURES CORR PSIG	-----
	60.00	2.70	1005.25	
	63.00	2.62	1013.66	
	66.00	2.55	1021.01	
	69.00	2.48	1027.31	
	72.00	2.42	1032.56	
	75.00	2.36	1037.82	
	78.00	2.31	1043.07	
	81.00	2.26	1048.32	
	84.00	2.21	1051.47	
	87.00	2.17	1054.62	
	90.00	2.13	1058.82	
-2:12 2ND SHUT-IN	0.00	0.00	1058.82	

SUPERIOR TESTERS ENTERPRISES INC.

DATA SUMMARY

ORIGINAL

COMPANY : MUSTANG OIL AND GAS CORP. WELL NAME : SCHMITZ #1-15
DATE OF TEST : 9-16-1993 LOCATION : C-SE-NE 15-21S-34W
DST. NO : 3 SHUT-IN PERIOD : 2

INTERPRETIVE DATA (OIL)

TRANSMISSIBILITY

Oil (md.ft/cp): 3.00
Gas (md.ft/cp): 0.00

EFFECTIVE PERMEABILITY

Oil (md): .31
Gas (md): 0.00

TOTAL MOBILITY (md/cp): .39

TOTAL COMPRESSIBILITY (psi-1): 7.86E-06

ESTIMATED DAMAGE RATIO: .42

CALCULATED DAMAGE RATIO: .55

Reservoir Temperature (F): 110.00
Formation Porosity : .13
Formation Thickness (ft): 8.00
Wellbore Radius (in): 3.94
Reservoir Compressibility (psi-1): 4.80E-07
Calculated Skin Factor : -1.85

PRODUCTION WITH DAMAGE REMOVED (bbl/D): 10.94

PRODUCTIVITY INDEX (bbl/psi): .01

Final Flow Pressure (psi): 107.00

APPROXIMATE RADIUS OF INVESTIGATION (ft): 26.00

Total Flowing Time (min): 102.00

EXTRAPOLATED RESERVOIR PRESSURE (psi): 1258.00

Slope of Build-up Curve (psi/log cycle): 592.72

Effective Producing Time (min): 102.00