

WAYNE LEBSACK  
PETROLEUM GEOLOGIST  
603 S. Douglas  
LYONS, KANSAS  
67554

November 6, 1998

Lebsack Oil Production, Inc  
Box 489  
Hays, Kansas 67601

Foster "D"-3-14  
1980' FNL, 1320" FEL  
Section 14-T21s-R35w  
Kearney CO. Ks.

---

Contractor	Abercrombie RTD
Date Spudded	October 19, 1998
Total Depth	5010 feet
Date Rotary Completed	Oct. 27, 1998
Casing	8-5/8" surface 284' 5-1/2" production 5008'
Elevations	Ground Level 3104' Zero-Kelly Bushing 3109'
Samples	2400 feet to T.D.
Logs	Gas Detector, Rosel Dual Induction & Density-Neutron

Geological Formation Tops

Formation	Drilling Depth	Elec. Log Depth	Sub-Sea Depth
Krider	N/A	2680	+ 429
Lansing	4902	3995	- 886
Marmaton	4509	4504	- 1395
Cherokee	4641	4640	- 1531
Morrow	4853	4848	- 1739
Morrow Sand	4904	4904	- 1795
Mississippi	4929	4929	- 1820
Total Depth	5010	5010	

Intervals of Interest

Marmaton

White oolitic limestone, no shows evident in samples or gas detector. Log porosity - 17%  
Water saturation -70%

Morrow

clear very fined grained friable sand, with light oil staining. No shows ( ) gas detector. Log porosity -17%, water saturation -57 - 80 %.

DST No. 1  
4900 - 5010

60-60-60=60, fair to strong blow. recovered 60' gas, 5' oil, 90' mud with show of oil. 275' of water with show of oil, 185' water, with 37,000 ppm chlorides - mud 3200 ppm chlorides. Flow Press. 135/238 & 278/329  
ICIP -576 FCIP -572

DST No. 2  
4890 -4920

mis-run- packer failure

DST No. 3  
4847' - 4920

60-30-15-30- weak blow- Recovered 120' drilling mud  
Flow Press. 49/109 & 109/109  
ICIP 364 FCIP 476

Mississippi  
4920 - 5010

White, chalky, sandy limestone, no shows in samples. Log porosity 5%

## SUMMARY

### Structural Comparisons

<u>Formation</u>	<u>Foster D-3</u> <u>This well</u>	<u>Foster D-2</u> <u>E/offset</u> <u>Morrow well</u>	<u>Van Doren 1-14</u> <u>S/offset</u> <u>Morrow well</u>
Lansing	- 886	-878	-892
Marmaton	-1395	-1385	-1400
Cherokee	-1531	-1522	-1525
Morrow Sand	-1795	- 1780	-1781
Mississippi	-1820	- 1803	-1803

None of the tools used to evaluate this well, gas detector, drill stem tests, and electric logs - indicated a commercial well. The samples, with oil shows, were favorable, also by repositioning the packers for DST #3, there was no water recovered, indicating that the water recovered in DST # 1, was from a zone below 4920'. therefore given the proximity to good oil wells, Van Doren-D-1 & Foster D-2-, casing was cemented to conclusively test the well for production.

Submitted by

Wayne Lebsack

1. Nov. 17, run Rosel Bond Log. top of cement 3624' - T.D. 4986'
2. Swabbed hole dry-spotted 20/b KCL water 700'
3. Perf 4908-12 3H/ft. swabbed down - no show
4. Nov. 18, overnite fillup, fluid level @ 4740' -160' above perfs. swabbed down - recovered 130' water-10' muddy oil - 30 min. test - recovered 50' water w/show of oil, 1/hr. -no recovery, 2/hr. no recovery
5. trtd. well down csg. 250/gal 7½% MCA, 500/gal diesel w/hyflo (Halliburton), flush wq/brine: Max Press - 1400, Avg. Press 330, Avg. rate 5.5 B/PM - ISDP-100, vacuum/1 min. Total Ld. 137/B.
6. Swabbed down, recovered 113/B.-tested 2/hrs, recovered 5/B. Total recovered 118/B./lack 19B. of load - shut in
7. Nov. 19, overnite fillup (4200) fluid level - 800'-swabbed down recovered 14/B. water w/show of oil (3%)
8. Tested 30/Minute runs -

9:00 -	14/B	9:30 -
10:00 -	7.5/B	10:00 - (3% oil)
11:00 -	2.5/B	
12:00 -	2.5/B	
1:00 -	1.74/B	(1% oil)
9. Nov. 20, run tbg./pump/rods/set P/Unit to test pump into swab tank - pumping averaged 16/B day with approx 1% oil.
10. Dec. 14, - set plug @ 4898' and perf. 4816-22 3H/ft. (Cherokee) perf. 4526-32, treat w/500 gal NE/FE 15% acid, Max Press. 1000, total load 31/B. Swabbed down recovered 8/B. lack 23/B.
11. Dec. 15, fluid down 1500' - swabbed down recovered 14 B. tested 30/Minute swab runs. - recovered 1/B with show of oil (7%)



## ROBINSON SERVICES

1718 Pawnee  
Garden City, Kansas 67846  
318-276-8166 • Fax 318-276-7593



062908-U

PLAT NO.

3386

INVOICE NO.

Lebsack Oil &amp; Production, Inc.

OPERATOR

Foster D-3

LEASE NAME

Kearney County, Ks.

14

21<sup>5</sup>35<sup>W</sup>

1980' FNL - 1320' FEL

COUNTY

Sec.

Twp.

Rng.

LOCATION

3104.3 gr

ELEVATION

SCALE: 1" = 1000'

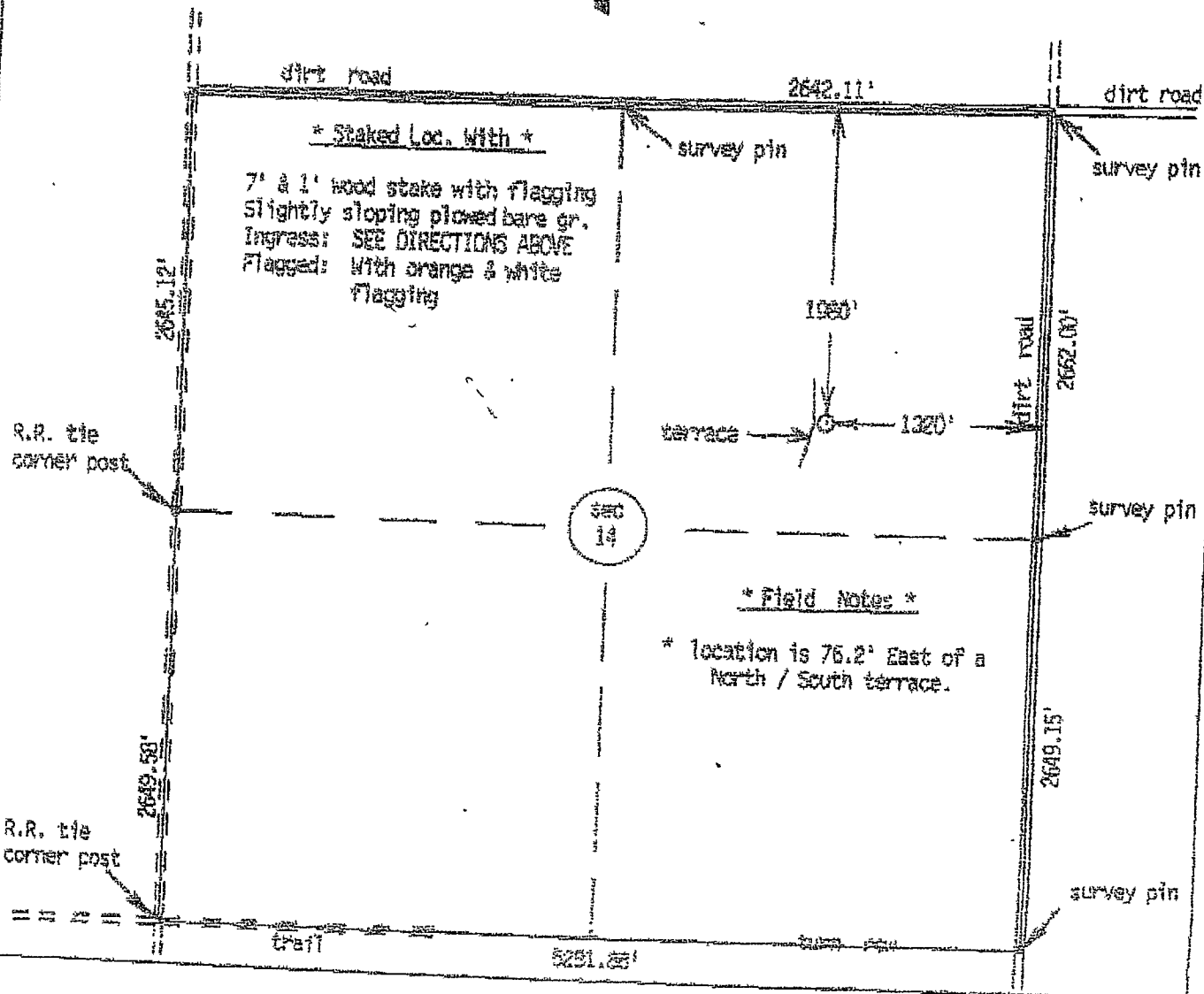
DATE: 8/29/93

SURVEYED BY: Burt West

DRAWN BY: Burt West

AUTHORIZED BY: Rex Curtis

DIRECTIONS: From the Country Corner Truck Stop in  
Deerfield, Ks. - take Hwy 50 for 1 1/2 miles  
Northeast - 15.8 miles North - 1/4 mile West  
into through plowed bare ground with terraces.



Ran Mid Con packer set @ 4800'. Reef acid. Acidize  
w/500 gal 15% - NE/FE Max Press. 1000  
Avg Press 700  
Avg Rate 2½ BPM ISDP 400,  
vac/5min.  
Total load 318/B swabbed 1/hr.-recovered 83/B-Shut in)  
lack 23/B of load.

12. Dec. 15, 1998 Fluid at 1500', overnite- swabbed down and  
recovered 14/B. - tested 1/hr. recovered 1/B. - 7% oil

Marmaton - 4526-32'- 3/HPF RBP at 4558' w/Mid Con packer  
at 4489/straddle, acidize w/500 gal 15% NE/FE, acid  
Max press. 1100 avg. press. 1000, avg. rate 2½ B/M  
ISDP - 400 - Zero press./20 min. Total load 30½ B.  
Swabbed down/recovered 20 B. - Shut in.

- 13 Dec. 16, 1998 - overnight -fluid level 3350' down = 1200'  
fillup.

Marmaton - 20' oil on top - swabbed down-recovered 4/B.,  
total recovered 24B., lack 6½ B. of load. Tested 30/M.  
swab runs. 1. 1/2 B. 15% oil (150' of fluid per  
2. 1/2 B. 15% oil run)  
left RBP and packer at same depths and acidized w/1000 gal  
FE/NE acid. Max Press 1500  
Avg. Press 1400  
Avg. Rate 4B/M ISDP 250 - Zero in 20/M.

Moved RBP down to straddle Cherokee zone. could not release  
packer from RBP, came out of hole w/packer -RBP still  
setting at 4848'

- 14 December 17, 1998 - Ran MidCon, full bore packer to 4799.  
acidized w/1000 gal geled retarded acid.-  
Max Press. 1400 Avg. Press 1350 Avg. Rate 5 B/M  
ISDP 200 Vacuum .  
Pulled packer and RBP

- 15 Pump test Dec. 18-28, 40/bbl wtr. & show oil per day

- 16 December 29 -pulled rods/pump & prepare to swab tbg.  
1100' fluid in hole- swabbed down -  
swabbed 5/hrs. recovered 18/BW w/show  
of oil -

Changed stroke on unit to 48" - ran rods/pump and  
started pumping on 12/30/98 .

Reported by Wayne