

TRILOBITE TESTING, L.L.C.

P.O. Box 362 • Hays, Kansas 67601

Drill-Stem Test Data

Well Name HAMPTON ESTATE 1-9 Test No. 1 Date 9/1/94
 Company HUGOTON ENERGY CORP Zone MARMATON
 Address 229 E WILLIAM #500 WICHITA KS 67202 Elevation 3174
 Co. Rep./Geo. JOHN CHRACTENSEN Cont. MURFIN RIG 20
 Location: Sec. 9 Twp. 21S Rge. 35W Co. KEARNY Est. Ft. of Pay _____ State KS

Interval Tested <u>4447-4518</u>	Drill Pipe Size <u>4.5" XH</u>
Anchor Length <u>71</u>	Wt. Pipe I.D. - 2.7 Ft. Run _____
Top Packer Depth <u>4442</u>	Drill Collar - 2.25 Ft. Run <u>503</u>
Bottom Packer Depth <u>4447</u>	Mud Wt. <u>9.3</u> lb/Gal.
Total Depth <u>4518</u>	Viscosity <u>47</u> Filtrate <u>8.6</u>

Tool Open @ 9:35 A.M. Initial Blow WEAK BLOW BUILD TO BOTTOM IN 2 MIN

Final Blow WEAK BLOW BUILD TO BOTTOM IN 35 MIN

Recovery - Total Feet 500 Flush Tool? NO

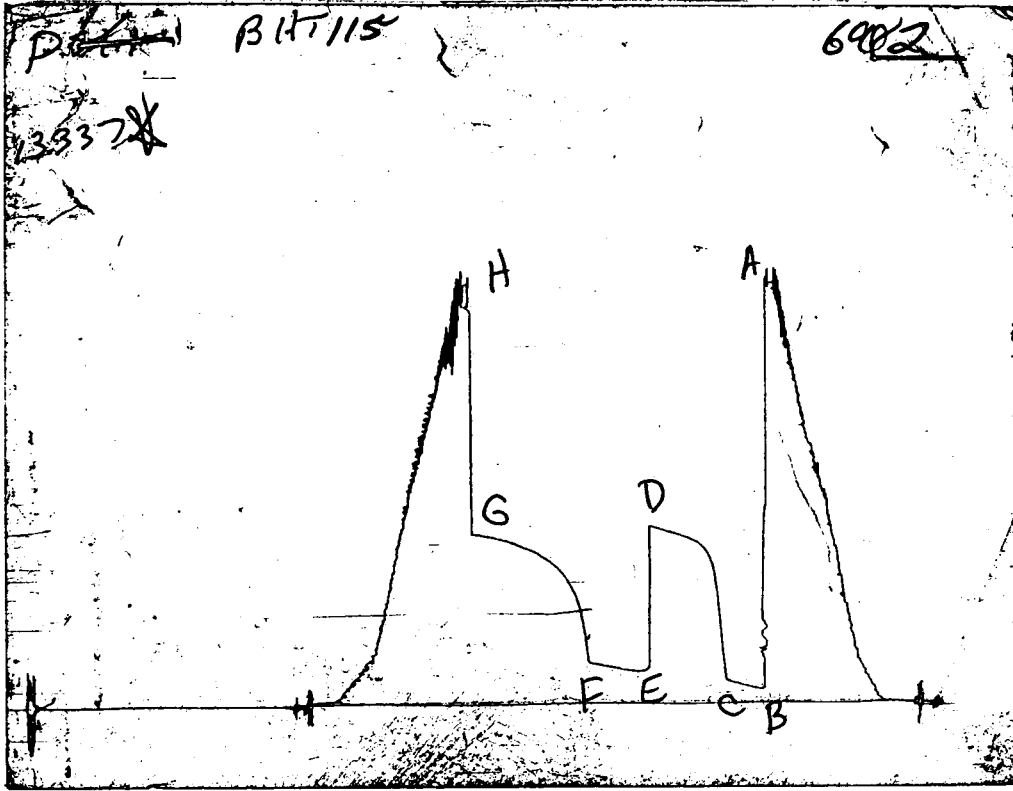
Rec. 440 Feet of HEAVY GAS CUT OIL & MUD 50%GAS/30%OIL/20%MUD
 Rec. 60 Feet of SLIGHT OIL CUT MUDDY WATER 5% OIL/75%WATER/20%MUD
 Rec. _____ Feet of _____
 Rec. _____ Feet of _____
 Rec. _____ Feet of _____

BHT 115 °F Gravity _____ °API @ _____ °F Corrected Gravity _____ °API
 RW 0.497 @ 68 °F Chlorides 35000 ppm Recovery Chlorides 1400 ppm System

(A) Initial Hydrostatic Mud 2256.9 PSI AK1 Recorder No. 13337 Range 3975
 (B) First Initial Flow Pressure 69.1 PSI @ (depth) 4450 w / Clock No. 26191
 (C) First Final Flow Pressure 118.5 PSI AK1 Recorder No. 13255 Range 6300
 (D) Initial Shut-in Pressure 960.7 PSI @ (depth) 4515 w / Clock No. 14389
 (E) Second Initial Flow Pressure 187.7 PSI AK1 Recorder No. _____ Range _____
 (F) Second Final Flow Pressure 242.0 PSI @ (depth) _____ w / Clock No. _____
 (G) Final Shut-in Pressure 928.2 PSI Initial Opening 30 Final Flow 45
 (H) Final Hydrostatic Mud 2137.2 PSI Initial Shut-in 60 Final Shut-in 90

Our Representative ROBERT COLLINS

CHART PAGE



This is an actual photograph of recorder chart 13337

	FIELD READING	OFFICE READING
(A) INITIAL HYDROSTATIC MUD	2219	2256.9
(B) FIRST INITIAL FLOW PRESSURE	61	69.1
(C) FIRST FINAL FLOW PRESSURE	118	118.5
(D) INITIAL CLOSED-IN PRESSURE	916	960.7
(E) SECOND INITIAL FLOW PRESSURE	148	187.7
(F) SECOND FINAL FLOW PRESSURE	197	242
(G) FINAL CLOSED-IN PRESSURE	877	928.2
(H) FINAL HYDROSTATIC MUD	2169	2137.2

TRILOBITE TESTING, L.L.C.

P.O. Box 362 • Hays, Kansas 67601

Drill-Stem Test Data

Well Name HAMPTON ESTATE 1-9 Test No. 2 Date 9/2/94
Company HUGOTON ENERGY CORP Zone PAWNEE/MARMA
Address 229 E WILLIAM #500 WICHITA KS 67202 Elevation 3174
Co. Rep./Geo. JOHN CHRISTONSEN Cont. MURFIN RIG 20 Est. Ft. of Pay 4
Location: Sec. 9 Twp. 21S Rge. 35W Co. KEARNY State KS

Interval Tested	<u>4570-4596</u>	Drill Pipe Size	<u>4.5" XH</u>
Anchor Length	<u>26</u>	Wt. Pipe I.D. - 2.7 Ft. Run	<u>560</u>
Top Packer Depth	<u>4565</u>	Drill Collar - 2.25 Ft. Run	<u>9.3</u>
Bottom Packer Depth	<u>4570</u>	Mud Wt.	<u>47</u> lb/Gal.
Total Depth	<u>4596</u>	Viscosity	<u>8.6</u>

Tool Open @ 5:35 A.M. Initial Blow VERY WEAK SURFACE BLOW BUILD TO 3 MIN

Final Blow FAIR BLOW BUILD TO A GOOD BLOW BUILD TO 9 8 IN

Recovery - Total Feet 80 Flush Tool? NO

Rec. 600 Feet of GAS IN PIPE
Rec. 80 Feet of HEAVY OIL GAS CUT MUD 20 %GAS/50%OIL/30%MUD
Rec. _____ Feet of _____
Rec. _____ Feet of _____
Rec. _____ Feet of _____

BHT 118 °F Gravity _____ °API @ _____ °F Corrected Gravity _____ °API
RW _____ @ _____ °F Chlorides _____ ppm Recovery Chlorides 1400 ppm System

(A) Initial Hydrostatic Mud 2945.2 PSI AK1 Recorder No. 13337 Range 3975

(B) First Initial Flow Pressure 42.4 PSI @ (depth) 4573 w / Clock No. 26191

(C) First Final Flow Pressure 42.4 PSI AK1 Recorder No. 10235 Range 4050

(D) Initial Shut-in Pressure 636.5 PSI @ (depth) 4593 w / Clock No. 14389

(E) Second Initial Flow Pressure 62.2 PSI AK1 Recorder No. _____ Range _____

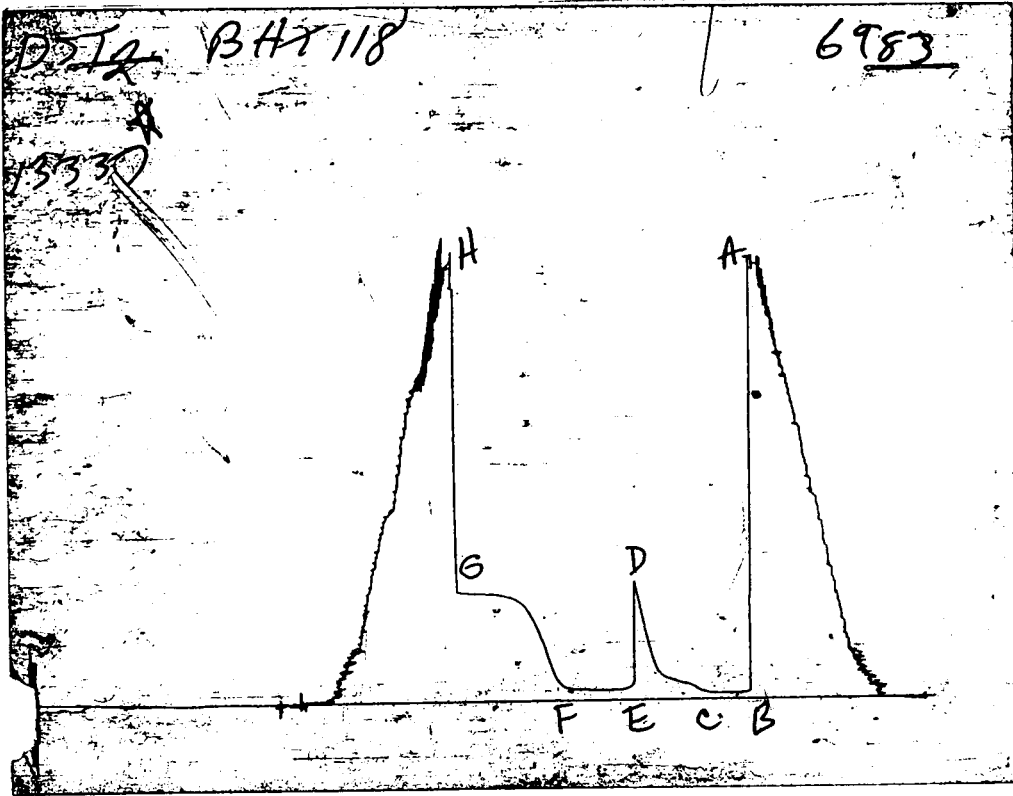
(F) Second Final Flow Pressure 62.2 PSI @ (depth) _____ w / Clock No. _____

(G) Final Shut-in Pressure 580.5 PSI Initial Opening 30 Final Flow 45

(H) Final Hydrostatic Mud 2923.6 PSI Initial Shut-in 60 Final Shut-in 90

Our Representative ROBERT COLLINS

CHART PAGE



This is an actual photograph of recorder chart 13337

	FIELD READING	OFFICE READING
(A) INITIAL HYDROSTATIC MUD	2965	2945.2
(B) FIRST INITIAL FLOW PRESSURE	29	42.4
(C) FIRST FINAL FLOW PRESSURE	29	42.4
(D) INITIAL CLOSED-IN PRESSURE	612	636.5
(E) SECOND INITIAL FLOW PRESSURE	49	62.2
(F) SECOND FINAL FLOW PRESSURE	49	62.2
(G) FINAL CLOSED-IN PRESSURE	562	580.5
(H) FINAL HYDROSTATIC MUD	2956	2923.6

TRILOBITE TESTING, L.L.C.

P.O. Box 362 • Hays, Kansas 67601

Drill-Stem Test Data

Well Name HAMPTON ESTATE 1-9 Test No. 3 Date 9/2/94
Company HUGOTON ENERGY CORP Zone FT. SCOTT/JO
Address 229 E WILLIAM #500 WICHITA KS 67202 Elevation 3174
Co. Rep./Geo. JOHN CHRISTONSEN Cont. MURFIN RIG 20 Est. Ft. of Pay 4
Location: Sec. 9 Twp. 21S Rge. 35W Co. KEARNY State KS

Interval Tested	<u>4600-4644</u>	Drill Pipe Size	<u>4.5" XH</u>
Anchor Length	<u>44</u>	Wt. Pipe I.D. - 2.7 Ft. Run	<u>533</u>
Top Packer Depth	<u>4595</u>	Drill Collar - 2.25 Ft. Run	<u>9.3</u>
Bottom Packer Depth	<u>4600</u>	Mud Wt.	<u>48</u> lb/Gal.
Total Depth	<u>4644</u>	Viscosity	<u>8</u> Filtrate

Tool Open @ 12:35 P.M. ^{Initial} Blow VERY WEAK SURFACE BLOW THROUGHOUT
Final Blow NO BLOW

Recovery - Total Feet _____ Flush Tool? NO

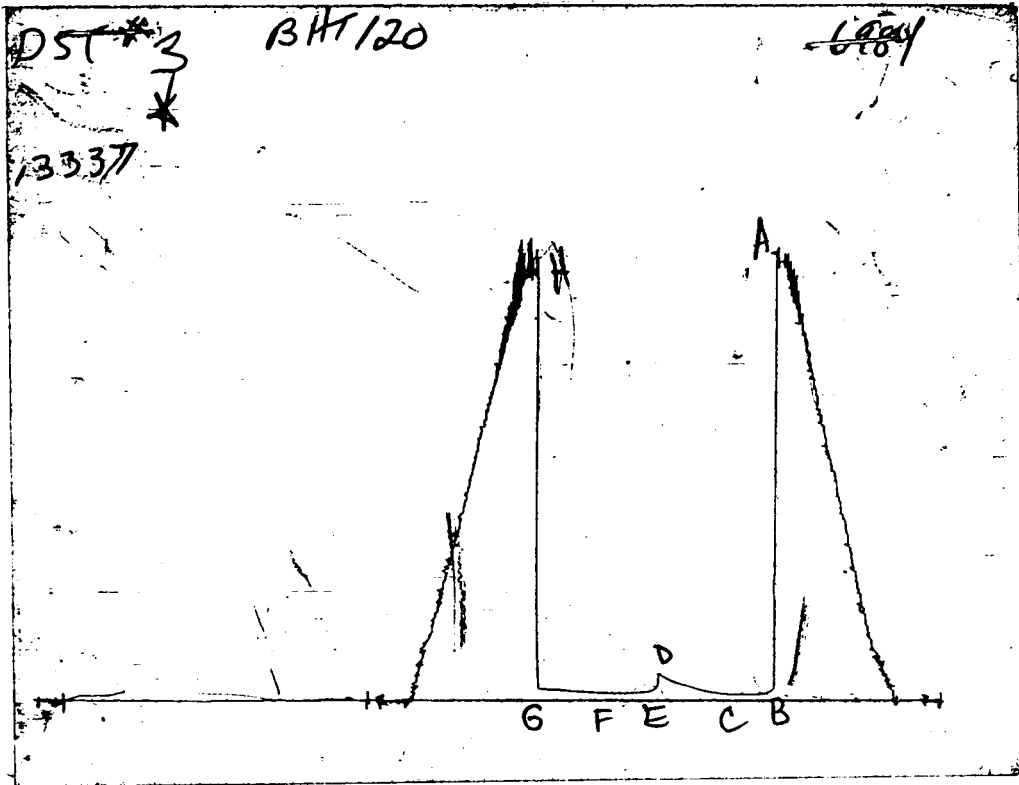
Rec. 15 Feet of DRILLING MUD 100%MUD
Rec. _____ Feet of _____
Rec. _____ Feet of _____
Rec. _____ Feet of _____
Rec. _____ Feet of _____

BHT 120 °F Gravity _____ °API @ _____ °F Corrected Gravity _____ °API
RW _____ @ _____ °F Chlorides _____ ppm Recovery Chlorides 1600 ppm System

(A) Initial Hydrostatic Mud 2325.1 PSI AK1 Recorder No. 13337 Range 3975
(B) First Initial Flow Pressure 35.5 PSI @ (depth) 4663 w / Clock No. 26191
(C) First Final Flow Pressure 35.5 PSI AK1 Recorder No. 13255 Range 6300
(D) Initial Shut-in Pressure 142.2 PSI @ (depth) 4641 w / Clock No. 14389
(E) Second Initial Flow Pressure 39.5 PSI AK1 Recorder No. _____ Range _____
(F) Second Final Flow Pressure 39.5 PSI @ (depth) _____ w / Clock No. _____
(G) Final Shut-in Pressure 62.2 PSI Initial Opening 30 Final Flow 30
(H) Final Hydrostatic Mud 2278.6 PSI Initial Shut-in 60 Final Shut-in 60

Our Representative ROBERT COLLINS

CHART PAGE



This is an actual photograph of recorder chart 13337

	FIELD READING	OFFICE READING
(A) INITIAL HYDROSTATIC MUD	2219	2256.9
(B) FIRST INITIAL FLOW PRESSURE	61	69.1
(C) FIRST FINAL FLOW PRESSURE	118	118.5
(D) INITIAL CLOSED-IN PRESSURE	916	960.7
(E) SECOND INITIAL FLOW PRESSURE	148	187.7
(F) SECOND FINAL FLOW PRESSURE	197	242
(G) FINAL CLOSED-IN PRESSURE	877	928.2
(H) FINAL HYDROSTATIC MUD	2169	2137.2