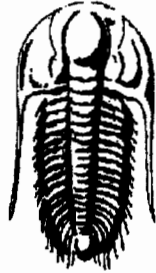


13-22s-12w



**TRILOBITE  
TESTING, INC.**

### DRILL STEM TEST REPORT

Prepared For: **LaVeta Oil & Gas LLC**

PO Box 780  
Middleburg VA 20118

ATTN: Bruce Reed

**13 22 12 Stafford KS**

**Jan #1**

Start Date: 2006.11.06 @ 11:08:56

End Date: 2006.11.06 @ 16:40:26

Job Ticket #: 25458                      DST #: 1

**15-185-23392-00-00**

**1870 FNL 1560 FWL  
NW SE NW**

Trilobite Testing, Inc

PO Box 362 Hays, KS 67601

ph: 785-625-4778 fax: 785-625-5620

LaVeta Oil & Gas LLC

Jan #1

13 22 12 Stafford KS

DST # 1

Lans, D, E, & F

2006.11.06



**TRILOBITE TESTING, INC**

# DRILL STEM TEST REPORT

LaVeta Oil & Gas LLC  
 PO Box 780  
 Middleburg VA 20118  
 ATTN: Bruce Reed

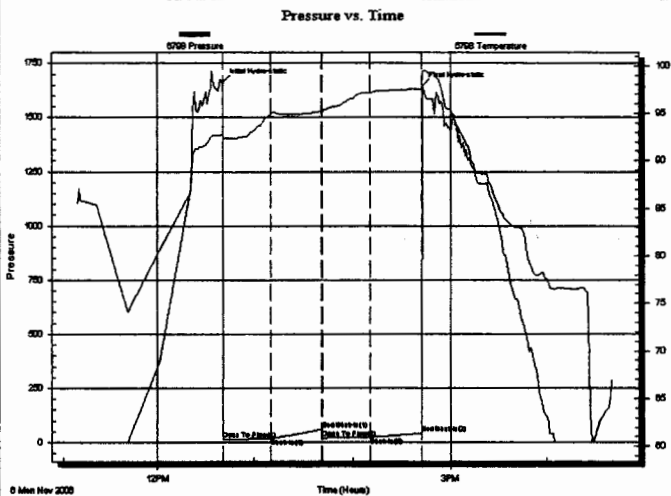
Jan #1  
 13 22 12 Stafford KS  
 Job Ticket: 25458 DST#: 1  
 Test Start: 2006.11.06 @ 11:08:56

## GENERAL INFORMATION:

Formation: **Lans. D,E,& F**  
 Deviated: No Whipstock: ft (KB)  
 Time Tool Opened: 12:40:56  
 Time Test Ended: 16:40:26  
 Interval: **3340.00 ft (KB) To 3375.00 ft (KB) (TVD)**  
 Total Depth: 3375.00 ft (KB) (TVD)  
 Hole Diameter: 7.88 inches Hole Condition: Fair  
 Test Type: Conventional Bottom Hole  
 Tester: Gerald Adams  
 Unit No: 36  
 Reference Elevations: 1847.00 ft (KB)  
 1841.00 ft (CF)  
 KB to GR/CF: 6.00 ft

**Serial #: 6798** Inside  
 Press@RunDepth: 22.90 psig @ 3341.00 ft (KB) Capacity: 7000.00 psig  
 Start Date: 2006.11.06 End Date: 2006.11.06 Last Calib.: 2006.11.06  
 Start Time: 11:09:01 End Time: 16:40:25 Time On Btm: 2006.11.06 @ 12:40:26  
 Time Off Btm: 2006.11.06 @ 14:42:26

TEST COMMENT: IF Very weak surface blow  
 ISI No blow  
 FF Weak blow Built to 1"  
 FSI No blow



## PRESSURE SUMMARY

Time (Min.)	Pressure (psig)	Temp (deg F)	Annotation
0	1662.07	92.75	Initial Hydro-static
1	11.50	92.33	Open To Flow (1)
30	17.95	94.95	Shut-in(1)
61	60.08	95.18	End Shut-in(1)
61	18.45	95.10	Open To Flow (2)
91	22.90	97.12	Shut-in(2)
122	40.92	97.60	End Shut-in(2)
122	1645.35	99.34	Final Hydro-static

## Recovery

Length (ft)	Description	Volume (bbl)
15.00	VSOCM 2%O 98%M	0.07
0.00		0.00

## Gas Rates

	Choke (inches)	Pressure (psig)	Gas Rate (Mcf/d)



**TRILOBITE  
TESTING, INC**

**DRILL STEM TEST REPORT**

**TOOL DIAGRAM**

LaVeta Oil & Gas LLC

**Jan #1**

PO Box 780  
Middleburg VA 20118

**13 22 12 Stafford KS**

Job Ticket: 25458

**DST#: 1**

ATTN: Bruce Reed

Test Start: 2006.11.06 @ 11:08:56

**Tool Information**

Drill Pipe:	Length: 3227.00 ft	Diameter: 3.80 inches	Volume: 45.27 bbl	Tool Weight: 2100.00 lb
Heavy Wt. Pipe:	Length: 0.00 ft	Diameter: 0.00 inches	Volume: 0.00 bbl	Weight set on Packer: 20000.00 lb
Drill Collar:	Length: 123.00 ft	Diameter: 2.25 inches	Volume: 0.60 bbl	Weight to Pull Loose: 58000.00 lb
		<u>Total Volume:</u>	<u>45.87 bbl</u>	Tool Chased 0.00 ft
Drill Pipe Above KB:	30.00 ft			String Weight: Initial 42000.00 lb
Depth to Top Packer:	3340.00 ft			Final 43000.00 lb
Depth to Bottom Packer:	ft			
Interval between Packers:	35.00 ft			
Tool Length:	55.00 ft			
Number of Packers:	2	Diameter: 6.75 inches		

Tool Comments:

**Tool Description**

Tool Description	Length (ft)	Serial No.	Position	Depth (ft)	Accum. Lengths
Shut in Tool	5.00			3325.00	
Hydraulic tool	5.00			3330.00	
Packer	5.00			3335.00	20.00 Bottom Of Top Packer
Packer	5.00			3340.00	
Stubb	1.00			3341.00	
Recorder	0.00	6798	Inside	3341.00	
Perforations	31.00			3372.00	
Recorder	0.00	13249	Outside	3372.00	
Bullnose	3.00			3375.00	35.00 Bottom Packers & Anchor
<b>Total Tool Length:</b>	<b>55.00</b>				



**TRILOBITE  
TESTING, INC**

# DRILL STEM TEST REPORT

**FLUID SUMMARY**

LaVeta Oil & Gas LLC

Jan #1

PO Box 780  
Middleburg VA 20118

13 22 12 Stafford KS

Job Ticket: 25458

DST#: 1

ATTN: Bruce Reed

Test Start: 2006.11.06 @ 11:08:56

## Mud and Cushion Information

Mud Type: Gel Chem

Cushion Type:

Oil API:

deg API

Mud Weight: 9.00 lb/gal

Cushion Length:

ft

Water Salinity:

ppm

Viscosity: 53.00 sec/qt

Cushion Volume:

bbbl

Water Loss: 7.98 in<sup>3</sup>

Gas Cushion Type:

Resistivity: 0.00 ohm.m

Gas Cushion Pressure:

psig

Salinity: 6500.00 ppm

Filter Cake: 0.02 inches

## Recovery Information

Recovery Table

Length ft	Description	Volume bbbl
15.00	VSOCM 2%O 98%M	0.074
0.00		0.000

Total Length: 15.00 ft

Total Volume: 0.074 bbl

Num Fluid Samples: 0

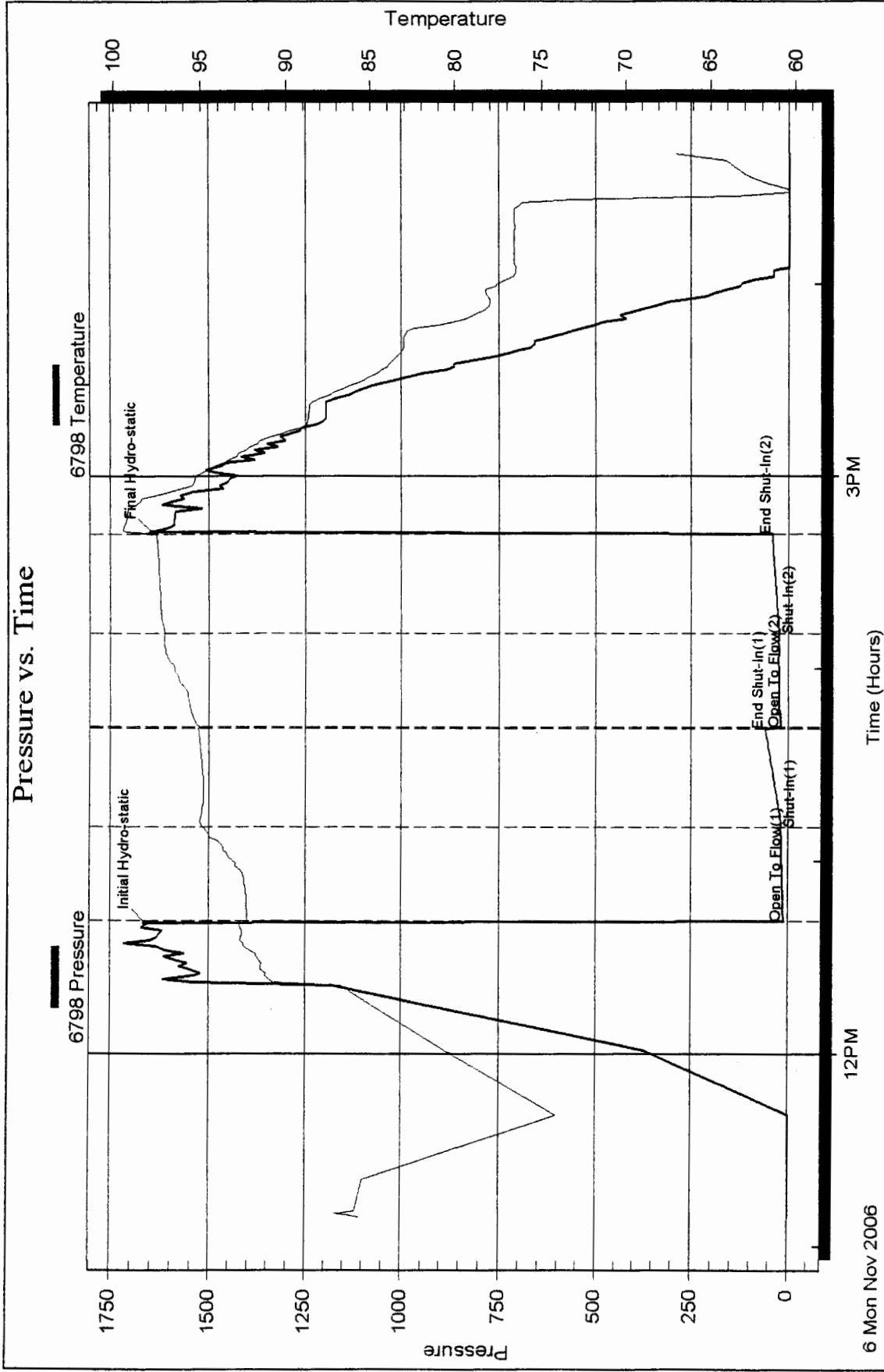
Num Gas Bombs: 0

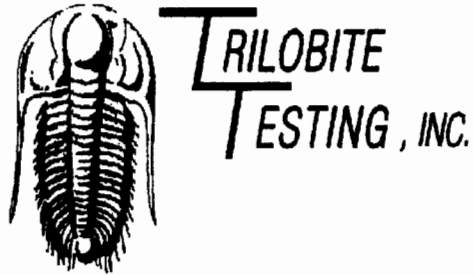
Serial #: none

Laboratory Name:

Laboratory Location:

Recovery Comments:





## DRILL STEM TEST REPORT

Prepared For: **LaVeta Oil & Gas LLC**

PO Box 780  
Middleburg VA 20118

ATTN: Bruce Reed

**13 22 12 Stafford KS**

**Jan #1**

Start Date: 2006.11.07 @ 07:48:48

End Date: 2006.11.07 @ 12:34:18

Job Ticket #: 25459                      DST #: 2

Trilobite Testing, Inc  
PO Box 362 Hays, KS 67601  
ph: 785-625-4778 fax: 785-625-5620

LaVeta Oil & Gas LLC

Jan #1

13 22 12 Stafford KS

DST # 2

Lans, J & K

2006.11.07





**TRILOBITE  
TESTING, INC**

## DRILL STEM TEST REPORT

**TOOL DIAGRAM**

LaVeta Oil & Gas LLC

Jan #1

PO Box 780  
Middleburg VA 20118

13 22 12 Stafford KS

Job Ticket: 25459

DST#: 2

ATTN: Bruce Reed

Test Start: 2006.11.07 @ 07:48:48

### Tool Information

Drill Pipe:	Length: 3323.00 ft	Diameter: 3.80 inches	Volume: 46.61 bbl	Tool Weight: 2100.00 lb
Heavy Wt. Pipe:	Length: 0.00 ft	Diameter: 0.00 inches	Volume: 0.00 bbl	Weight set on Packer: 20000.00 lb
Drill Collar:	Length: 123.00 ft	Diameter: 2.25 inches	Volume: 0.60 bbl	Weight to Pull Loose: 50000.00 lb
			Total Volume: 47.21 bbl	Tool Chased 0.00 ft
Drill Pipe Above KB:	16.00 ft			String Weight: Initial 42000.00 lb
Depth to Top Packer:	3450.00 ft			Final 42000.00 lb
Depth to Bottom Packer:	ft			
Interval between Packers:	40.00 ft			
Tool Length:	60.00 ft			
Number of Packers:	2	Diameter: 6.75 inches		

Tool Comments:

### Tool Description

Tool Description	Length (ft)	Serial No.	Position	Depth (ft)	Accum. Lengths
Shut In Tool	5.00			3435.00	
Hydraulic tool	5.00			3440.00	
Packer	5.00			3445.00	20.00 Bottom Of Top Packer
Packer	5.00			3450.00	
Stubb	1.00			3451.00	
Perforations	6.00			3457.00	
Recorder	0.00	6798	Inside	3457.00	
Perforations	30.00			3487.00	
Recorder	0.00	13249	Outside	3487.00	
Bullnose	3.00			3490.00	40.00 Bottom Packers & Anchor
<b>Total Tool Length:</b>	<b>60.00</b>				



**TRILOBITE  
TESTING, INC**

**DRILL STEM TEST REPORT**

**FLUID SUMMARY**

LaVeta Oil & Gas LLC

Jan #1

PO Box 780  
Middleburg VA 20118

13 22 12 Stafford KS

Job Ticket: 25459

DST#: 2

ATTN: Bruce Reed

Test Start: 2006.11.07 @ 07:48:48

**Mud and Cushion Information**

Mud Type: Gel Chem

Cushion Type:

Oil API:

deg API

Mud Weight: 9.00 lb/gal

Cushion Length:

ft

Water Salinity:

ppm

Viscosity: 59.00 sec/qt

Cushion Volume:

bbl

Water Loss: 8.78 in<sup>3</sup>

Gas Cushion Type:

Resistivity: 0.00 ohm.m

Gas Cushion Pressure:

psig

Salinity: 8300.00 ppm

Filter Cake: 0.02 inches

**Recovery Information**

Recovery Table

Length ft	Description	Volume bbl
5.00	Drilling Mud 100%M	0.025
0.00		0.000

Total Length: 5.00 ft      Total Volume: 0.025 bbl

Num Fluid Samples: 0

Num Gas Bombs: 0

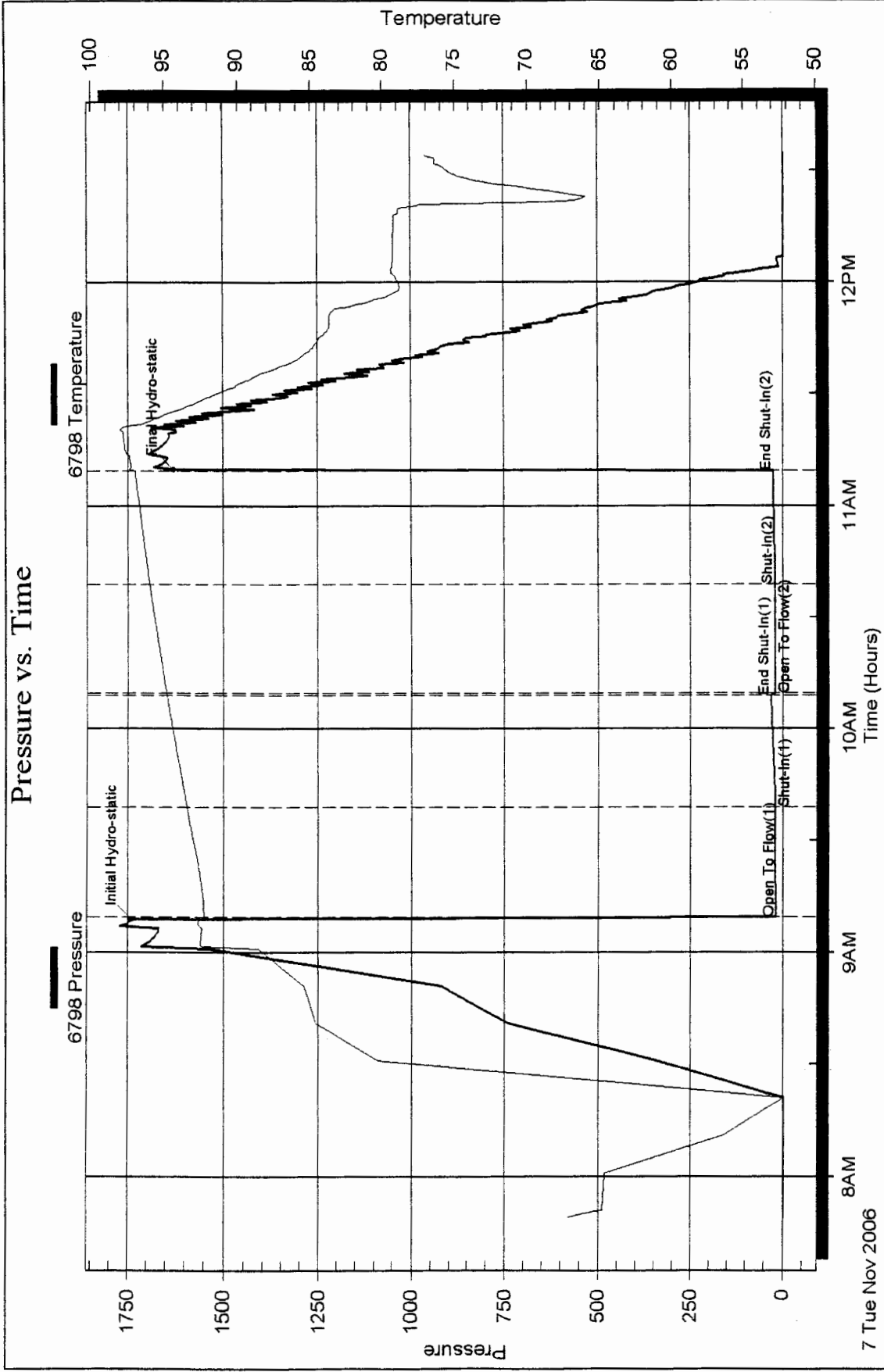
Serial #: none

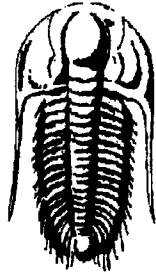
Laboratory Name:

Laboratory Location:

Recovery Comments:

### Pressure vs. Time





**TRILOBITE  
TESTING, INC.**

## DRILL STEM TEST REPORT

Prepared For: **LaVeta Oil & Gas LLC**

PO Box 780  
Middleburg VA 20118

ATTN: Bruce Reed

**13 22 12 Stafford KS**

**Jan #1**

Start Date: 2006.11.08 @ 04:10:37

End Date: 2006.11.08 @ 11:22:07

Job Ticket #: 25460                      DST #: 3

Trilobite Testing, Inc

PO Box 362 Hays, KS 67601

ph: 785-625-4778 fax: 785-625-5620

LaVeta Oil & Gas LLC

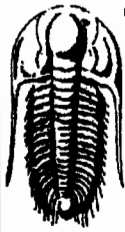
Jan #1

13 22 12 Stafford KS

DST # 3

Arbuckle

2006.11.08



**TRILOBITE TESTING, INC**

# DRILL STEM TEST REPORT

LaVeta Oil & Gas LLC  
 PO Box 780  
 Middleburg VA 20118  
 ATTN: Bruce Reed

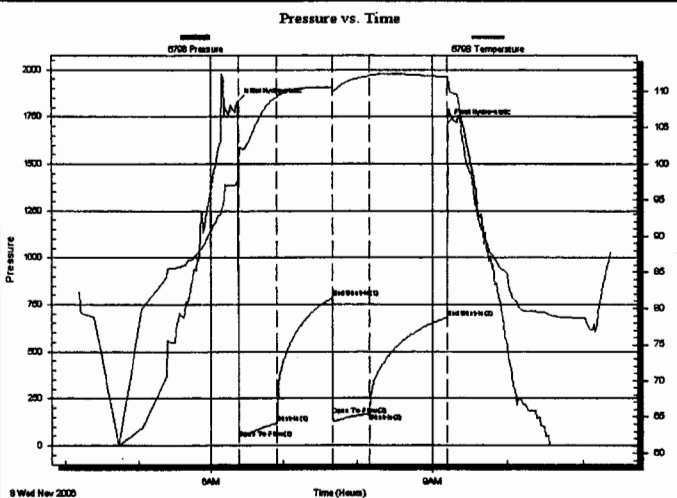
Jan #1  
 13 22 12 Stafford KS  
 Job Ticket: 25460 DST#: 3  
 Test Start: 2006.11.08 @ 04:10:37

## GENERAL INFORMATION:

Formation: **Arbuckle**  
 Deviated: No Whipstock: ft (KB)  
 Time Tool Opened: 06:24:37  
 Time Test Ended: 11:22:07  
 Interval: **3635.00 ft (KB) To 3645.00 ft (KB) (TVD)**  
 Total Depth: 3375.00 ft (KB) (TVD)  
 Hole Diameter: 7.88 inches Hole Condition: Fair  
 Test Type: Conventional Bottom Hole  
 Tester: Gerald Adams  
 Unit No: 36  
 Reference Elevations: 1847.00 ft (KB)  
 1841.00 ft (CF)  
 KB to GR/CF: 6.00 ft

Serial #: **6798** Inside  
 Press@RunDepth: 167.41 psig @ 3636.00 ft (KB)  
 Start Date: 2006.11.08 End Date: 2006.11.08 Capacity: 7000.00 psig  
 Start Time: 04:10:42 End Time: 11:22:06 Last Calib.: 2006.11.08  
 Time On Btmr: 2006.11.08 @ 06:24:07  
 Time Off Btmr: 2006.11.08 @ 09:12:06

TEST COMMENT: IF Strong blow BOB in 1 1/2 mins.  
 ISI Fair blow BOB in 10 mins.  
 FF Strong blow BOB in 6 mins.  
 FSI Fair blow BOB in 11 mins.



## PRESSURE SUMMARY

Time (Min.)	Pressure (psig)	Temp (deg F)	Annotation
0	1828.46	97.85	Initial Hydro-static
1	36.24	100.07	Open To Flow (1)
31	116.53	109.16	Shut-in(1)
76	784.32	110.51	End Shut-in(1)
76	159.81	110.07	Open To Flow (2)
106	167.41	112.11	Shut-in(2)
167	680.08	111.95	End Shut-in(2)
168	1716.61	112.00	Final Hydro-static

## Recovery

Length (ft)	Description	Volume (bbl)
190.00	HG&MCO 60%G 30%O 10%M	1.54
260.00	Clean Oil 100%O	3.65
0.00	2350' GIP	0.00
0.00	Gravity= 39 API @ 100 deg. 35 API Corr	0.00
0.00		0.00

## Gas Rates

	Choke (inches)	Pressure (psig)	Gas Rate (Mcf/d)



**TRILOBITE  
TESTING, INC**

**DRILL STEM TEST REPORT**

**TOOL DIAGRAM**

LaVeta Oil & Gas LLC

Jan #1

PO Box 780  
Middleburg VA 20118

13 22 12 Stafford KS

Job Ticket: 25460

DST#: 3

ATTN: Bruce Reed

Test Start: 2006.11.08 @ 04:10:37

**Tool Information**

Drill Pipe:	Length: 3512.00 ft	Diameter: 3.80 inches	Volume: 49.26 bbl	Tool Weight: 2100.00 lb
Heavy Wt. Pipe:	Length: 0.00 ft	Diameter: 0.00 inches	Volume: 0.00 bbl	Weight set on Packer: 20000.00 lb
Drill Collar:	Length: 123.00 ft	Diameter: 2.25 inches	Volume: 0.60 bbl	Weight to Pull Loose: 55000.00 lb
		<u>Total Volume:</u>	49.86 bbl	Tool Chased 0.00 ft
Drill Pipe Above KB:	20.00 ft			String Weight: Initial 43000.00 lb
Depth to Top Packer:	3635.00 ft			Final 46000.00 lb
Depth to Bottom Packer:	ft			
Interval between Packers:	10.00 ft			
Tool Length:	30.00 ft			
Number of Packers:	2	Diameter: 6.75 inches		

Tool Comments:

**Tool Description**

**Length (ft) Serial No. Position Depth (ft) Accum. Lengths**

Shut In Tool	5.00			3620.00	
Hydraulic tool	5.00			3625.00	
Packer	5.00			3630.00	20.00 Bottom Of Top Packer
Packer	5.00			3635.00	
Stubb	1.00			3636.00	
Recorder	0.00	6798	Inside	3636.00	
Perforations	6.00			3642.00	
Recorder	0.00	13249	Outside	3642.00	
Bullnose	3.00			3645.00	10.00 Bottom Packers & Anchor
<b>Total Tool Length:</b>	<b>30.00</b>				



**TRILOBITE  
TESTING, INC**

**DRILL STEM TEST REPORT**

**FLUID SUMMARY**

LaVeta Oil & Gas LLC

Jan #1

PO Box 780  
Middleburg VA 20118

13 22 12 Stafford KS

Job Ticket: 25460

DST#: 3

ATTN: Bruce Reed

Test Start: 2006.11.08 @ 04:10:37

**Mud and Cushion Information**

Mud Type: Gel Chem

Cushion Type:

Oil API:

deg API

Mud Weight: 9.00 lb/gal

Cushion Length:

ft

Water Salinity:

ppm

Viscosity: 45.00 sec/qt

Cushion Volume:

bbl

Water Loss: 8.78 in<sup>3</sup>

Gas Cushion Type:

Resistivity: 0.00 ohm.m

Gas Cushion Pressure:

psig

Salinity: 8300.00 ppm

Filter Cake: 0.02 inches

**Recovery Information**

Recovery Table

Length ft	Description	Volume bbl
190.00	HG&MCO 60%G 30%O 10%M	1.545
260.00	Clean Oil 100%O	3.647
0.00	2350' GIP	0.000
0.00	Gravity= 39 API @ 100 deg. 35 API Corr	0.000
0.00		0.000

Total Length: 450.00 ft

Total Volume: 5.192 bbl

Num Fluid Samples: 0

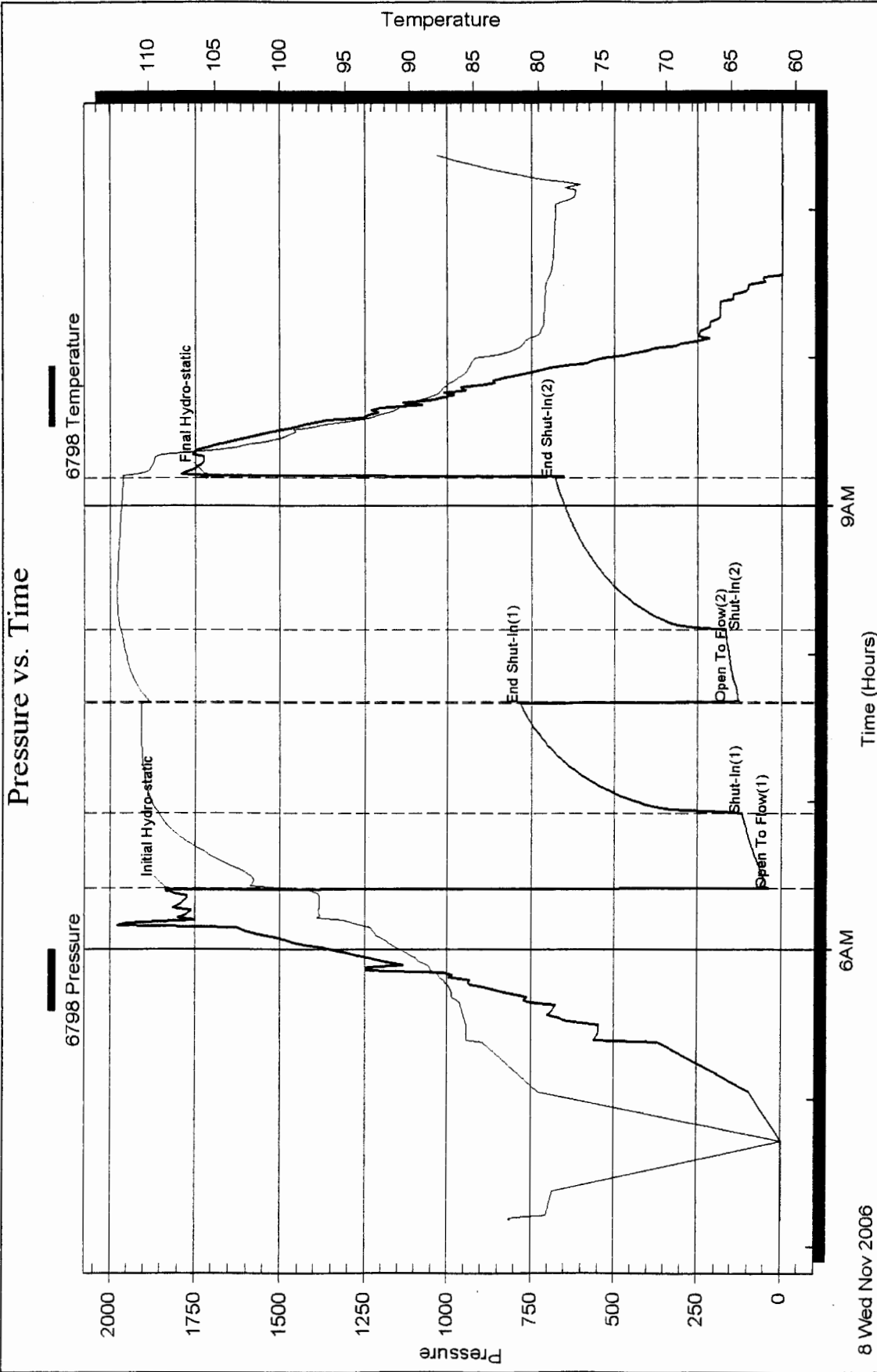
Num Gas Bombs: 0

Serial #: none

Laboratory Name:

Laboratory Location:

Recovery Comments:





**TRILOBITE  
TESTING, INC.**

## DRILL STEM TEST REPORT

Prepared For: **LaVeta Oil & Gas LLC**

PO Box 780  
Middleburg VA 20118

ATTN: Bruce Reed

**13 22 12 Stafford KS**

**Jan #1**

Start Date: 2006.11.08 @ 17:42:13

End Date: 2006.11.09 @ 01:16:43

Job Ticket #: 25461                      DST #: 4

Trilobite Testing, Inc

PO Box 362 Hays, KS 67601

ph: 785-625-4778 fax: 785-625-5620

LaVeta Oil & Gas LLC

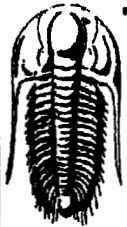
Jan #1

13 22 12 Stafford KS

DST # 4

Arbuckle

2006.11.08



**TRILOBITE TESTING, INC**

# DRILL STEM TEST REPORT

LaVeta Oil & Gas LLC  
 PO Box 780  
 Middleburg VA 20118  
 ATTN: Bruce Reed

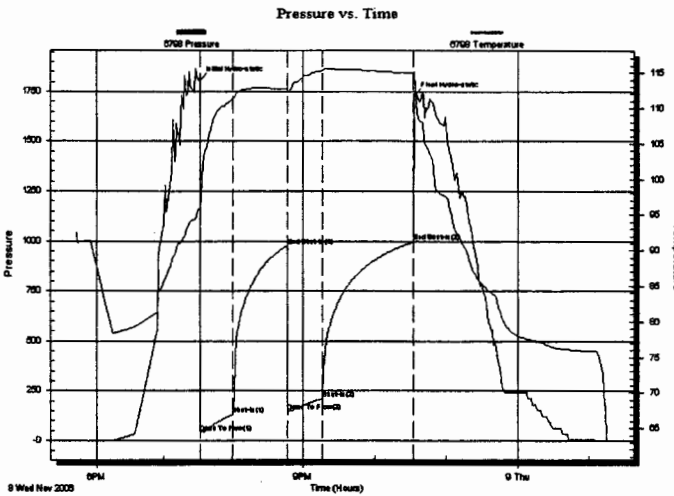
**Jan #1**  
**13 22 12 Stafford KS**  
 Job Ticket: 25461      **DST#: 4**  
 Test Start: 2006.11.08 @ 17:42:13

## GENERAL INFORMATION:

Formation: **Arbuckle**  
 Deviated: **No Whipstock**      ft (KB)  
 Test Type: **Conventional Bottom Hole**  
 Time Tool Opened: 19:32:13      Tester: **Gerald Adams**  
 Time Test Ended: 01:16:43      Unit No: **36**  
 Interval: **3645.00 ft (KB) To 3650.00 ft (KB) (TVD)**      Reference Elevations: **1847.00 ft (KB)**  
 Total Depth: **3650.00 ft (KB) (TVD)**      **1841.00 ft (CF)**  
 Hole Diameter: **7.88 inches** Hole Condition: **Fair**      KB to GR/CF: **6.00 ft**

**Serial #: 6798**      **Inside**  
 Press@RunDepth: **210.58 psig @ 3646.00 ft (KB)**      Capacity: **7000.00 psig**  
 Start Date: **2006.11.08**      End Date: **2006.11.09**      Last Calib.: **2006.11.09**  
 Start Time: **17:42:18**      End Time: **01:16:42**      Time On Btm: **2006.11.08 @ 19:31:43**  
 Time Off Btm: **2006.11.08 @ 22:33:12**

**TEST COMMENT:** IF Strong blow BOB in 2 1/2 mins.  
 ISI Strong blow BOB in 4 mins.  
 FF Strong blow BOB in 4 1/2 mins.  
 FSI Fair blow BOB in 6 mins.



## PRESSURE SUMMARY

Time (Min.)	Pressure (psig)	Temp (deg F)	Annotation
0	1805.62	96.01	Initial Hydro-static
1	37.21	95.72	Open To Flow (1)
30	130.51	111.36	Shut-in(1)
76	97.52	112.79	End Shut-in(1)
76	144.68	112.32	Open To Flow (2)
106	210.58	115.30	Shut-in(2)
181	996.27	114.94	End Shut-in(2)
182	1732.03	115.21	Final Hydro-static

## Recovery

Length (ft)	Description	Volume (bbl)
123.00	HG&OCM 60%g 4%o 36%m	0.60
60.00	SG&MCO 2%g 90%o 8%m	0.84
357.00	Clean Oil 100%O	5.01
0.00	2460' GIP	0.00
0.00	Gravity= 35API @ 55 deg. 34.5 Corr.	0.00
0.00		0.00

## Gas Rates

	Choke (inches)	Pressure (psig)	Gas Rate (Mcf/d)



**TRILOBITE  
TESTING, INC**

**DRILL STEM TEST REPORT**

**TOOL DIAGRAM**

LaVeta Oil & Gas LLC

Jan #1

PO Box 780  
Middleburg VA 20118

13 22 12 Stafford KS

Job Ticket: 25461

DST#: 4

ATTN: Bruce Reed

Test Start: 2006.11.08 @ 17:42:13

**Tool Information**

Drill Pipe:	Length: 3512.00 ft	Diameter: 3.80 inches	Volume: 49.26 bbl	Tool Weight: 2100.00 lb
Heavy Wt. Pipe:	Length: 0.00 ft	Diameter: 0.00 inches	Volume: 0.00 bbl	Weight set on Packer: 20000.00 lb
Drill Collar:	Length: 123.00 ft	Diameter: 2.25 inches	Volume: 0.60 bbl	Weight to Pull Loose: 65000.00 lb
			<u>Total Volume: 49.86 bbl</u>	Tool Chased 0.00 ft
Drill Pipe Above KB:	10.00 ft			String Weight: Initial 44000.00 lb
Depth to Top Packer:	3645.00 ft			Final 45000.00 lb
Depth to Bottom Packer:	ft			
Interval between Packers:	5.00 ft			
Tool Length:	25.00 ft			
Number of Packers:	2	Diameter: 6.75 inches		

Tool Comments:

Tool Description	Length (ft)	Serial No.	Position	Depth (ft)	Accum. Lengths
Shut In Tool	5.00			3630.00	
Hydraulic tool	5.00			3635.00	
Packer	5.00			3640.00	20.00 Bottom Of Top Packer
Packer	5.00			3645.00	
Stubb	1.00			3646.00	
Recorder	0.00	6798	Inside	3646.00	
Perforations	1.00			3647.00	
Bullnose	3.00			3650.00	5.00 Bottom Packers & Anchor

**Total Tool Length: 25.00**



**TRILOBITE  
TESTING, INC**

**DRILL STEM TEST REPORT**

**FLUID SUMMARY**

LaVeta Oil & Gas LLC

Jan #1

PO Box 780  
Middleburg VA 20118

13 22 12 Stafford KS

Job Ticket: 25461

DST#: 4

ATTN: Bruce Reed

Test Start: 2006.11.08 @ 17:42:13

**Mud and Cushion Information**

Mud Type: Gel Chem	Cushion Type:	Oil API:	deg API
Mud Weight: 9.00 lb/gal	Cushion Length: ft	Water Salinity:	ppm
Viscosity: 50.00 sec/qt	Cushion Volume: bbl		
Water Loss: 12.78 in <sup>3</sup>	Gas Cushion Type:		
Resistivity: 0.00 ohm.m	Gas Cushion Pressure: psig		
Salinity: 8100.00 ppm			
Filter Cake: 0.02 inches			

**Recovery Information**

Recovery Table

Length ft	Description	Volume bbl
123.00	HG&OCM 60%g 4%o 36%m	0.605
60.00	SG&MCO 2%g 90%o 8%m	0.842
357.00	Clean Oil 100%O	5.008
0.00	2460' GIP	0.000
0.00	Gravity= 35API @ 55 deg. 34.5 Corr.	0.000
0.00		0.000

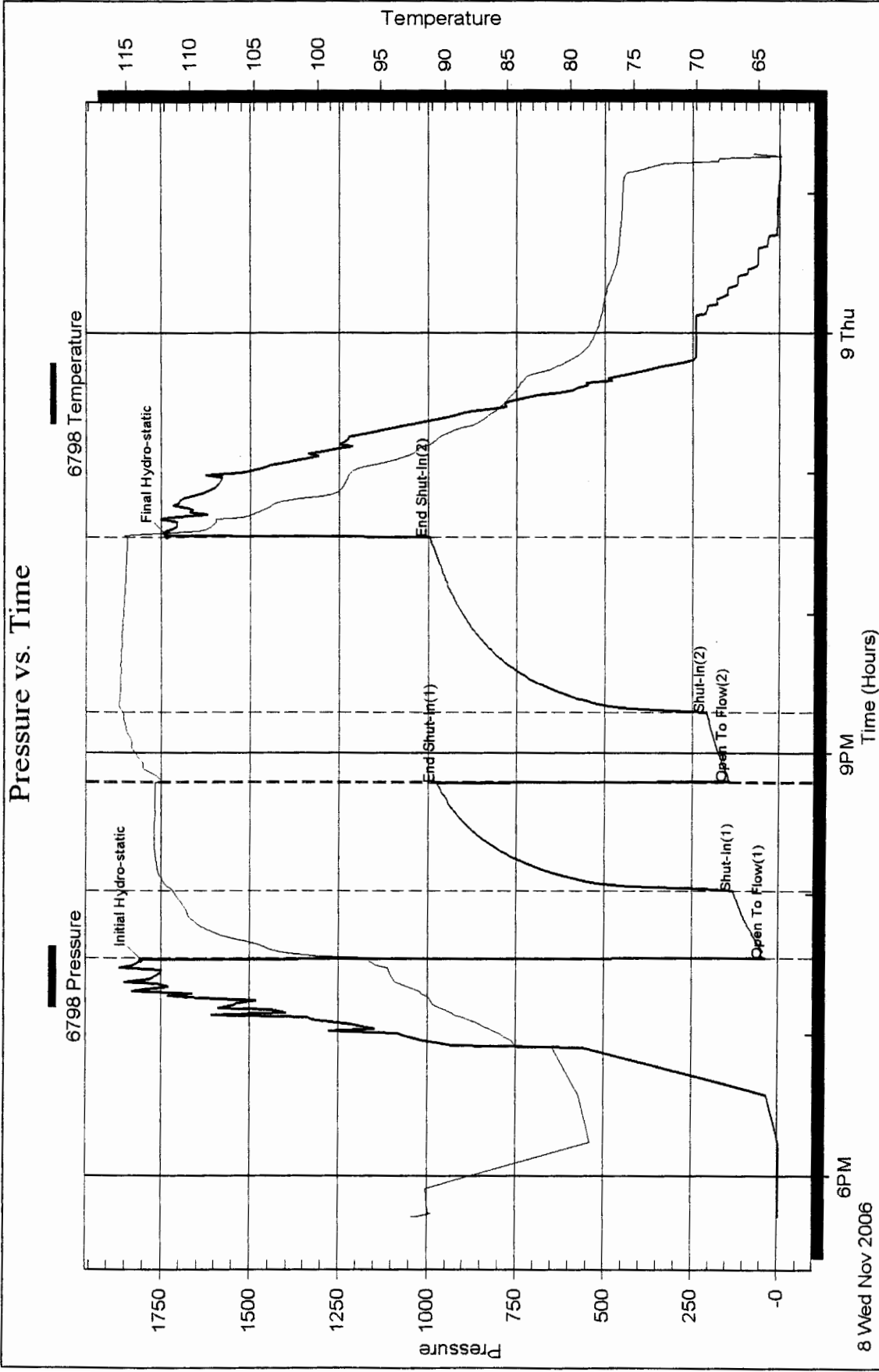
Total Length: 540.00 ft      Total Volume: 6.455 bbl

Num Fluid Samples: 0      Num Gas Bombs: 0      Serial #: none

Laboratory Name:      Laboratory Location:

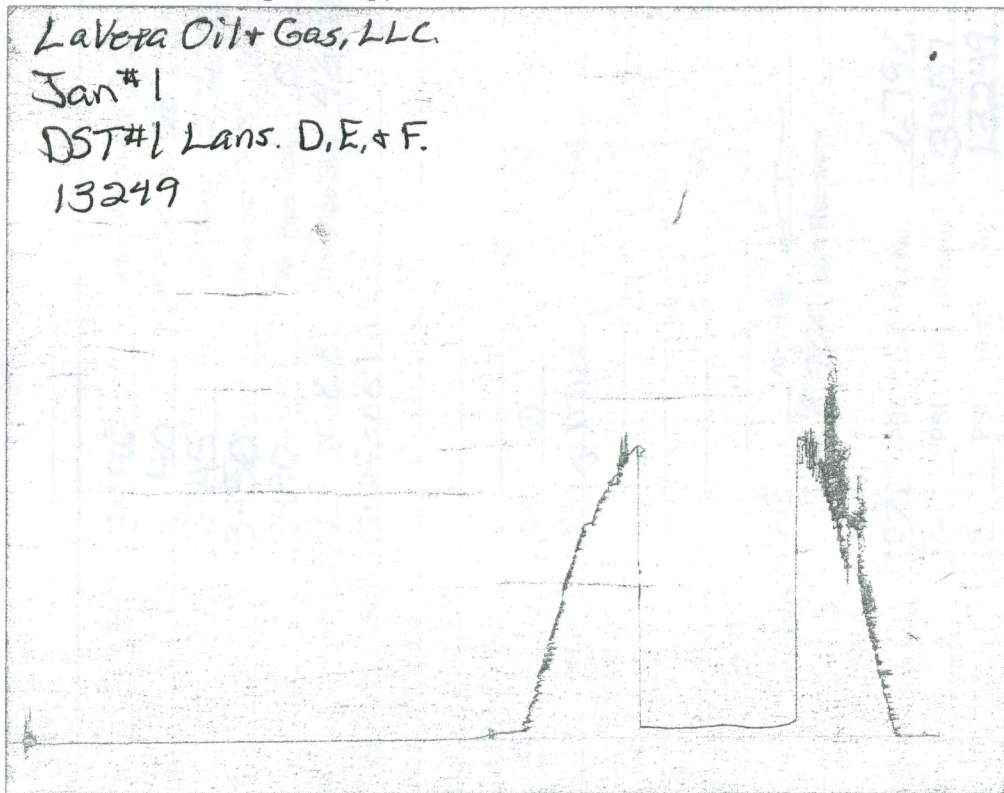
Recovery Comments:

# Pressure vs. Time



**CHART PAGE**

This is a photocopy of the actual AK-1 recorder chart.



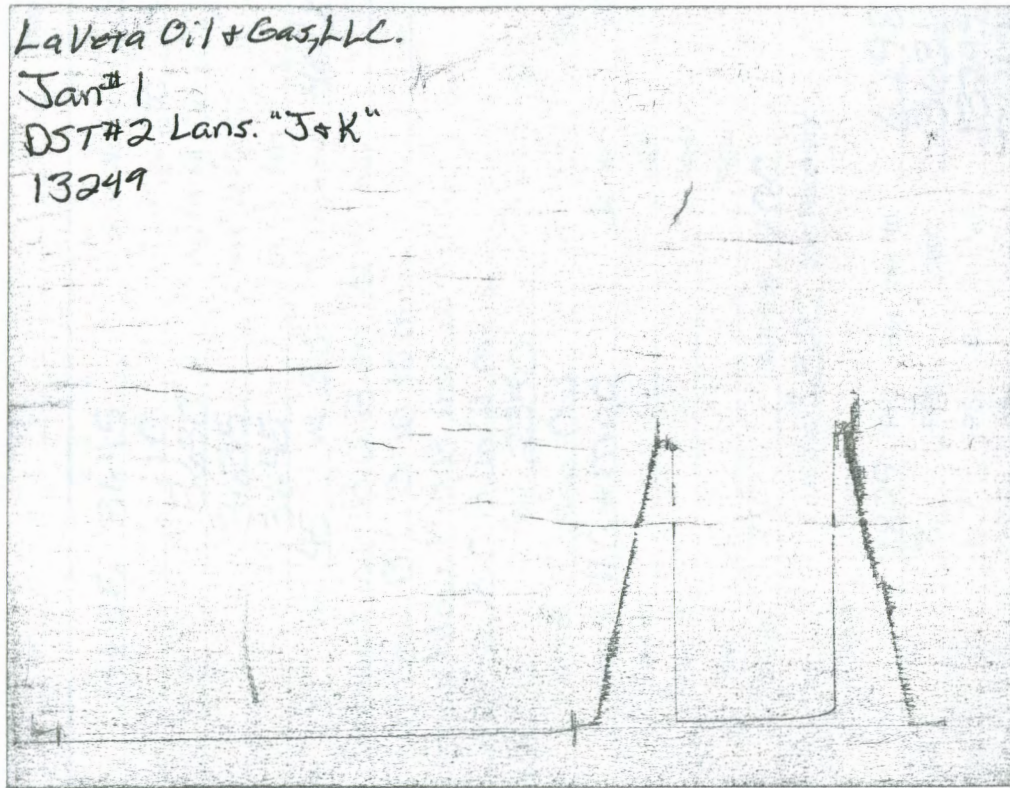
Test Ticket

Test No. 13249  
Well Name: LaVera Oil + Gas, LLC  
DST #1 Lans. D, E, & F  
13249

Pressure (PSI) vs. Time (min) graph showing two peaks. The first peak is at approximately 15 minutes with a pressure of 6796 PSI. The second peak is at approximately 25 minutes with a pressure of 13249 PSI. The chart is labeled 'LaVera Oil + Gas, LLC' and 'DST #1 Lans. D, E, & F'.

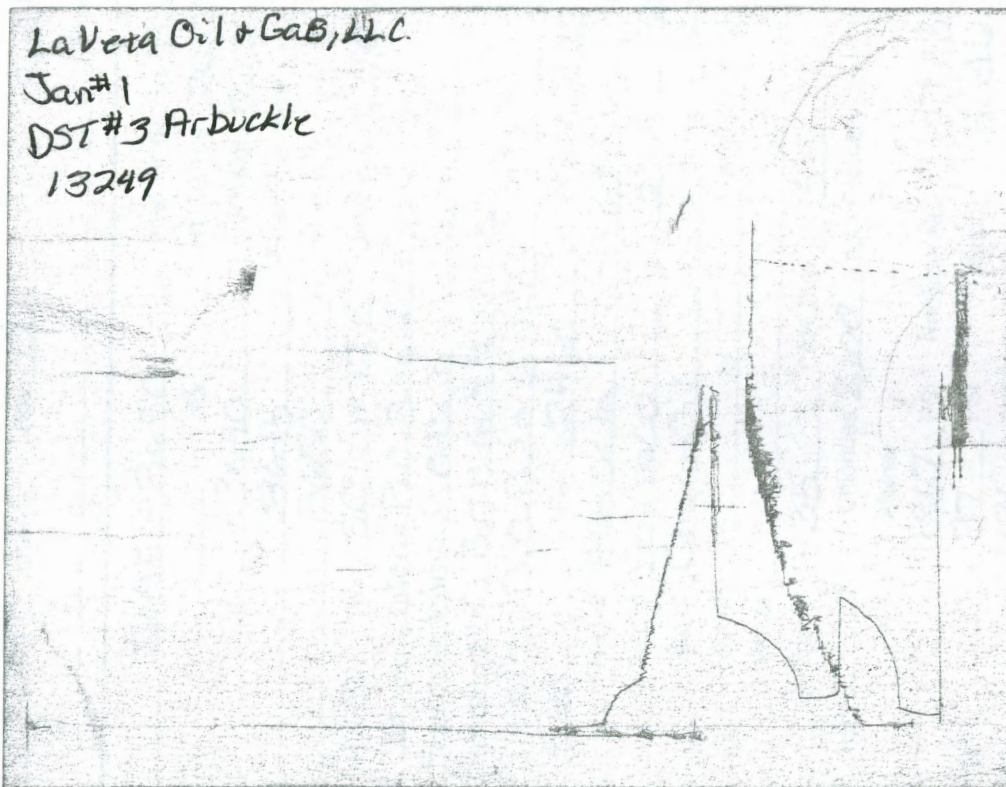
**CHART PAGE**

This is a photocopy of the actual AK-1 recorder chart.



### CHART PAGE

This is a photocopy of the actual AK-1 recorder chart.



977 PSI  
115 PSI  
711 PSI  
96 PSI Initial Open  
117 PSI Initial

Second Stage  
Second Stage  
Final Stage  
Final Stage

Approved By: [Signature]  
Date: [Date]