

15-185-23586

4-22s-12w

DIAMOND TESTING

P.O. Box 157

HOISINGTON, KANSAS 67544

(620) 653-7550 • (800) 542-7313

STC 30036.D647

Company Charter Energy, Inc. Lease & Well No. Teichmann No. 3

Elevation 1868 KB Formation Lansing/Kansas City "K" Effective Pay -- Ft. Ticket No. J2444

Date 11-28-09 Sec. 4 Twp. 22S Range 12W County Stafford State Kansas

Test Approved By Josh R. Austin Diamond Representative John C. Riedl

Formation Test No. 1 Interval Tested from 3,478 ft. to 3,500 ft. Total Depth 3,500 ft.

Packer Depth 3,473 ft. Size 63/4 in. Packer Depth -- ft. Size -- in.

Packer Depth 3,478 ft. Size 63/4 in. Packer Depth -- ft. Size -- in.

Depth of Selective Zone Set ft.

Top Recorder Depth (Inside) 3,481 ft. Recorder Number 30036 Cap. 6,000 psi

Bottom Recorder Depth (Outside) 3,497 ft. Recorder Number 11017 Cap. 4,000 psi

Below Straddle Recorder Depth ft. Recorder Number Cap. psi

Drilling Contractor Petromark Drilling, LLC - Rig 2 Drill Collar Length 120 ft. I.D. 2 1/4 in.

Mud Type Chemical Viscosity 51 Weight Pipe Length -- ft. I.D. -- in.

Weight 8.9 Water Loss 8.8 cc. Drill Pipe Length 3,338 ft. I.D. 3 1/2 in.

Chlorides 7,000 P.P.M. Test Tool Length 20 ft. Tool Size 3 1/2 - IF in.

Jars: Make Sterling Serial Number Not Run Anchor Length 22 ft. Size 4 1/2 - FH in.

Did Well Flow? No Reversed Out No Surface Choke Size 1 in. Bottom Choke Size 5/8 in.

Main Hole Size 7 7/8 in. Tool Joint Size 4 1/2 - XH in.

Blow: 1st Open: Weak, 1/2 in., blow. Dead in 15 mins. No blow back during shut-in.

2nd Open: Weak blow. Dead in 3 mins. No blow back during shut-in.

Recovered 20 ft. of oil specked drilling mud = .098400 bbls.

Recovered ft. of

Recovered ft. of

Recovered ft. of

Recovered ft. of

Remarks

Time Set Packer(s) 4:55 ^{AM} P.M. Time Started Off Bottom 6:55 ^{AM} P.M. Maximum Temperature 98 °

Initial Hydrostatic Pressure (A) 1659 P.S.I.

Initial Flow Period Minutes 30 (B) 27 P.S.I. to (C) 34 P.S.I.

Initial Closed In Period Minutes 30 (D) 136 P.S.I.

Final Flow Period Minutes 30 (E) 39 P.S.I. to (F) 40 P.S.I.

Final Closed In Period Minutes 30 (G) 77 P.S.I.

Final Hydrostatic Pressure (H) 1630 P.S.I.

GENERAL INFORMATION

Client Information:

Company: CHARTER ENERGY

Contact: STEVE BAIZE

Phone: Fax: e-mail:

Site Information:

Contact: JOSH AUSTIN

Phone: Fax: e-mail:

Well Information:

Name: TEICHMAN #3

Operator: CHARTER ENERGY

Location-Downhole:

Location-Surface:

Test Information:

Company: DIAMOND TESTING

Representative: JOHN RIEDL

Supervisor: JOSH AUSTIN

Test Type: Job Number: D647

Test Unit:

Start Date: 2009/11/28 Start Time: 15:30:00

End Date: 2009/11/28 End Time: 20:10:00

Report Date: 2009/11/28 Prepared By: JOHN RIEDL

Qualified By: JOSH AUSTIN

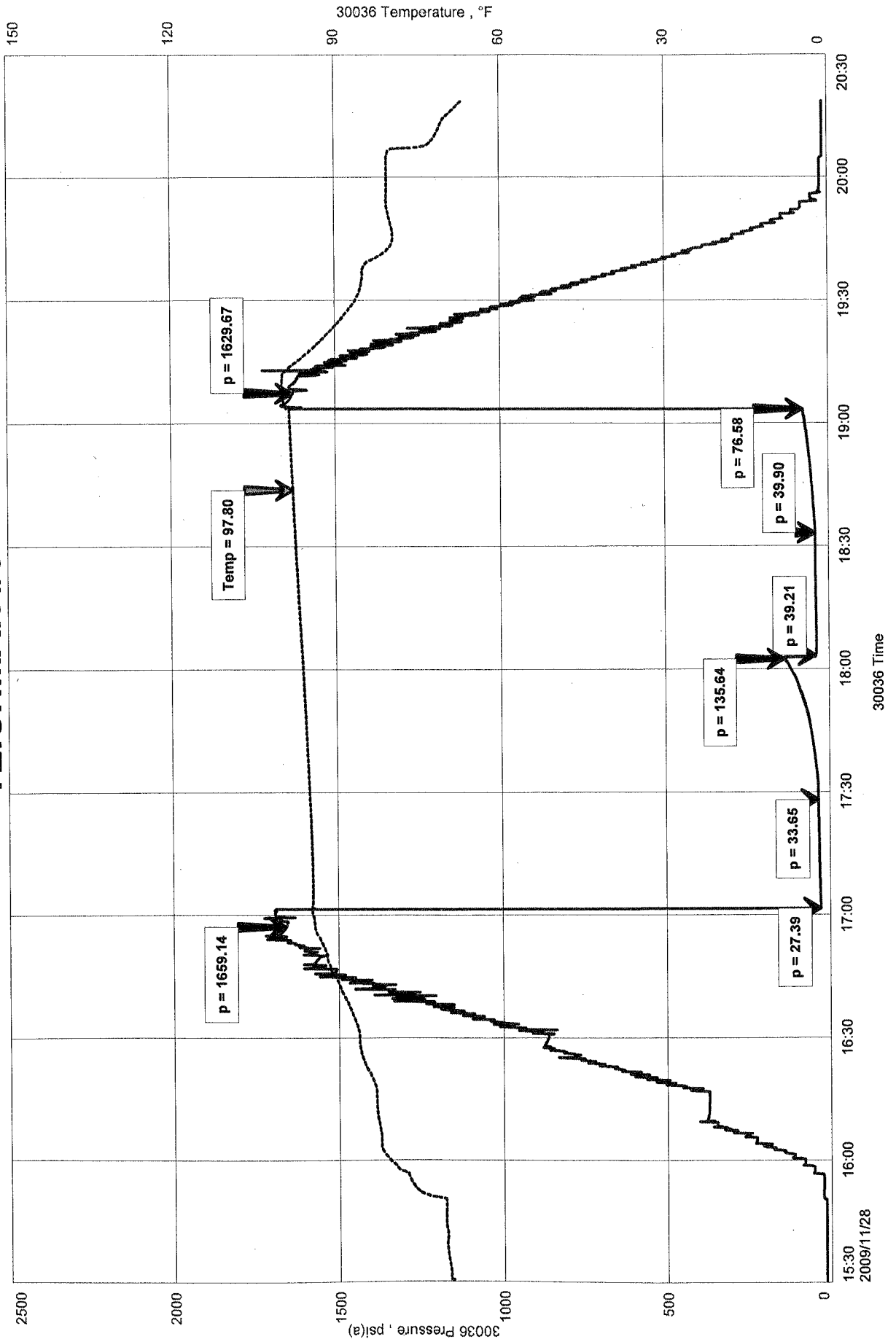
Remarks:

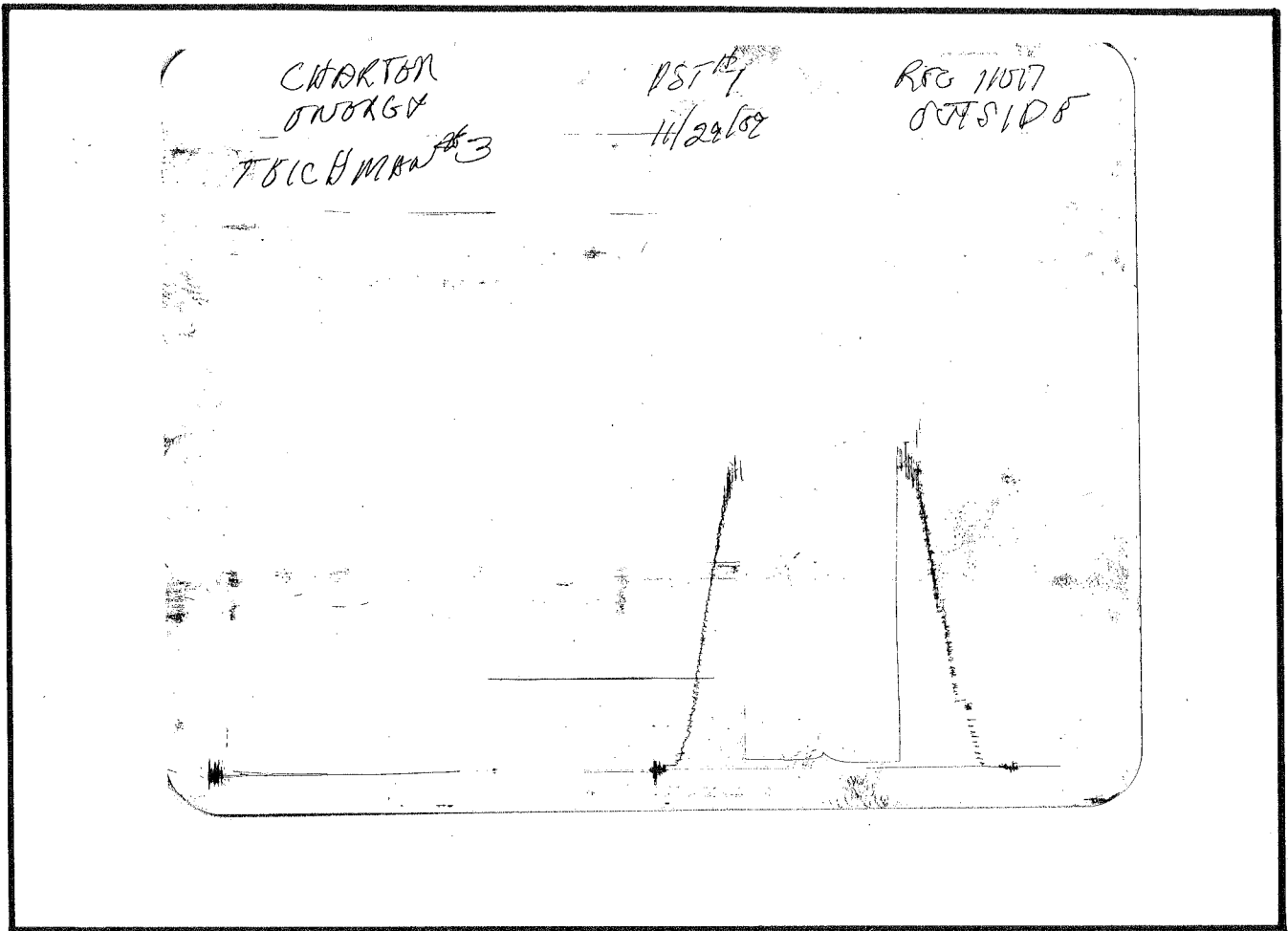
RECOVERY: 20' OIL SPECKED MUD

TEICHMAN #3
Formation: LKC "K"
Job Number: D647

CHARTER ENERGY
Start Test Date: 2009/11/28
Final Test Date: 2009/11/28

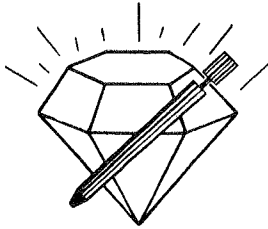
TEICHMAN #3





This is an actual photograph of recorder chart.

POINT	PRESSURE		Elec. Office Reading	PSI
	Field Reading			
(A) Initial Hydrostatic Mud	1659		1659	PSI
(B) First Initial Flow Pressure.....	27		27	PSI
(C) First Final Flow Pressure	34		34	PSI
(D) Initial Closed-in Pressure	136		136	PSI
(E) Second Initial Flow Pressure.....	39		39	PSI
(F) Second Final Flow Pressure.....	40		40	PSI
(G) Final Closed-in Pressure.....	77		77	PSI
(H) Final Hydrostatic Mud.....	1630		1630	PSI



DIAMOND TESTING

P.O. Box 157
HOISINGTON, KANSAS 67544
(620) 653-7550 • (800) 542-7313
STC 30046.D648

Company Charter Energy, Inc. Lease & Well No. Teichmann No. 3

Elevation 1868 KB Formation Arbuckle Effective Pay -- Ft. Ticket No. J2445

Date 11-29-09 Sec. 4 Twp. 22S Range 12W County Stafford State Kansas

Test Approved By Josh R. Austin Diamond Representative John C. Riedl

Formation Test No. 2 Interval Tested from 3,586 ft. to 3,648 ft. Total Depth 3,648 ft.

Packer Depth 3,581 ft. Size 6 3/4 in. Packer Depth -- ft. Size -- in.

Packer Depth 3,586 ft. Size 6 3/4 in. Packer Depth -- ft. Size -- in.

Depth of Selective Zone Set ft.

Top Recorder Depth (Inside) 3,589 ft. Recorder Number 30046 Cap. 6,000 psi

Bottom Recorder Depth (Outside) 3,645 ft. Recorder Number 11017 Cap. 4,000 psi

Below Straddle Recorder Depth ft. Recorder Number Cap. psi

Drilling Contractor Petromark Drilling, LLC - Rig 2 Drill Collar Length 120 ft. I.D. 2 1/4 in.

Mud Type Chemical Viscosity 51 Weight Pipe Length -- ft. I.D. -- in.

Weight 8.9 Water Loss 8.8 cc. Drill Pipe Length 3,446 ft. I.D. 3 1/2 in.

Chlorides 7,000 P.P.M. Test Tool Length 20 ft. Tool Size 3 1/2 - IF in.

Jars: Make Sterling Serial Number Not Run Anchor Length 62 ft. Size 4 1/2 - FH in.

Did Well Flow? No Reversed Out No Surface Choke Size 1 in. Bottom Choke Size 5/8 in.

Main Hole Size 7 7/8 in. Tool Joint Size 4 1/2 - XH in.

Blow: 1st Open: Strong blow. Off bottom of bucket in 4 mins. Strong blow back during shut-in.

2nd Open: Strong blow. Off bottom of bucket in 3 mins. Gas to surface during final shut-in. Strong blow back during shut-in.

Recovered 400 ft. of slightly mud cut gassy oil = 4.574800 bbls. (Grind out: 5%-mud; 20%-gas; 75%-oil)

Recovered ft. of

Recovered ft. of

Recovered ft. of

Recovered ft. of

Remarks

Time Set Packer(s) 9:32 A.M. P.M. Time Started Off Bottom 11:47 A.M. P.M. Maximum Temperature 106°

Initial Hydrostatic Pressure (A) 1748 P.S.I.

Initial Flow Period Minutes 30 (B) 40 P.S.I. to (C) 107 P.S.I.

Initial Closed In Period Minutes 30 (D) 1194 P.S.I.

Final Flow Period Minutes 30 (E) 126 P.S.I. to (F) 181 P.S.I.

Final Closed In Period Minutes 45 (G) 1196 P.S.I.

Final Hydrostatic Pressure (H) 1712 P.S.I.

GENERAL INFORMATION

Client Information:

Company: CHARTER ENERGY

Contact: STEVE BAIZE

Phone: Fax: e-mail:

Site Information:

Contact: JOSH AUSTUN

Phone: Fax: e-mail:

Well Information:

Name: TEICHMAN #3

Operator: CHARTER ENERGY

Location-Downhole:

Location-Surface:

Test Information:

Company: DIAMOND TESTING

Representative: JOHN RIEDL

Supervisor: JOSH AUSTIN

Test Type: Job Number: D648

Test Unit:

Start Date: 2009/11/29 Start Time: 08:00:00

End Date: 2009/11/29 End Time: 13:50:00

Report Date: 2009/11/29 Prepared By: JOHN RIEDL

Qualified By: JOSH AUSTIN

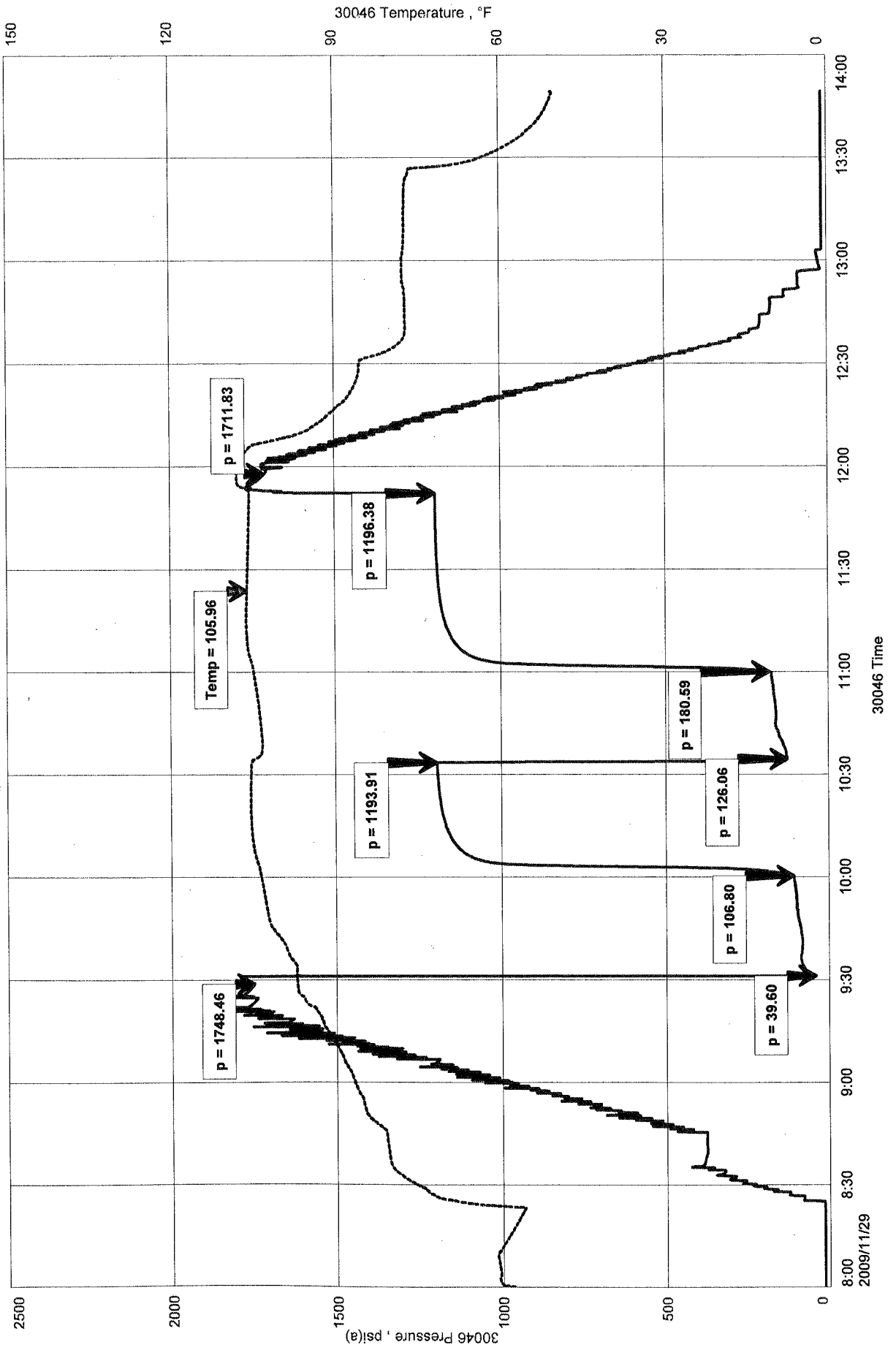
Remarks:

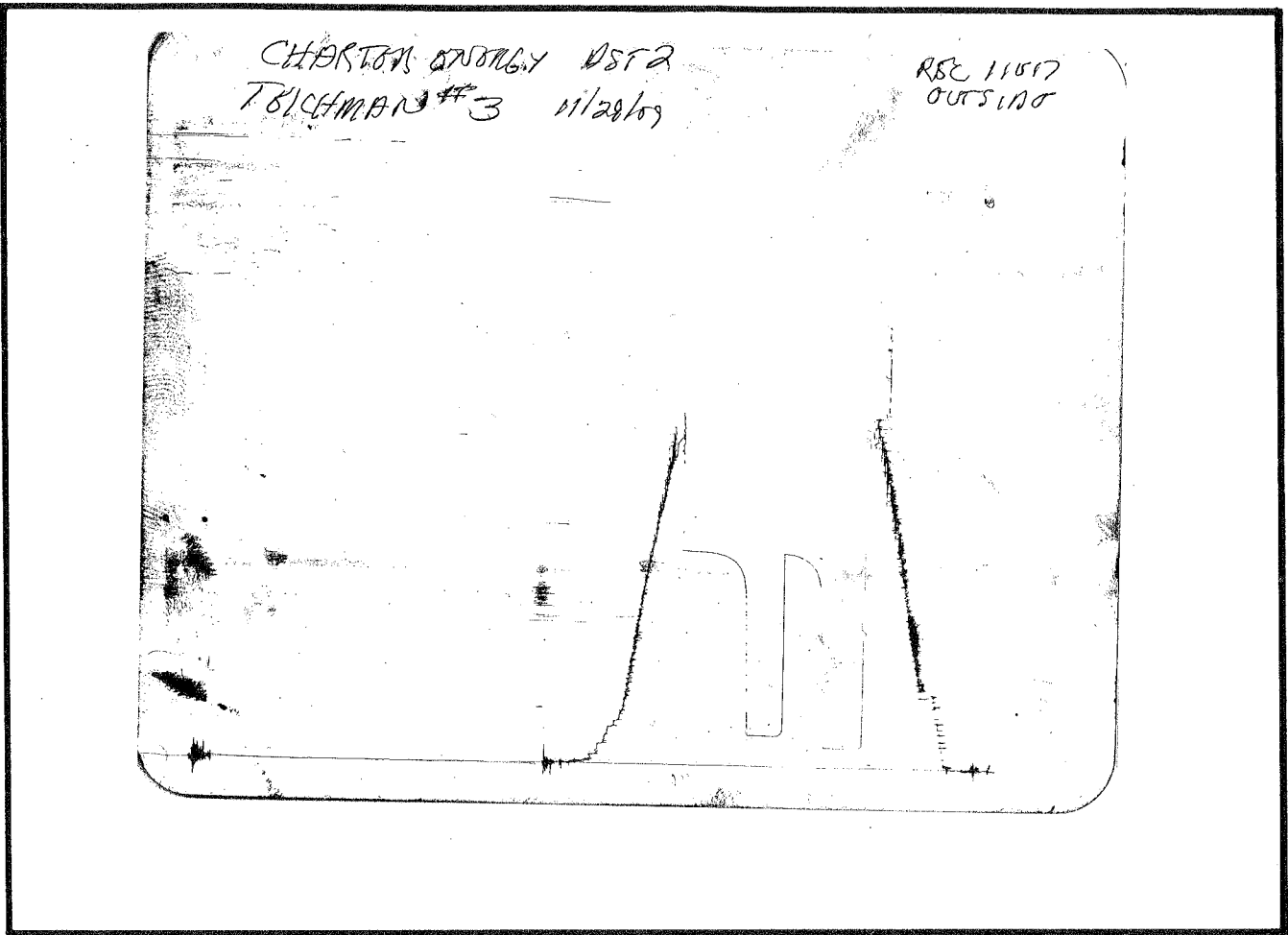
RECOVERY: GAS TO SURFACE
400' SLIGHTLY MUD CUT GASSY OIL

TEICHMAN #3
Formation: ARBUCKLE
Job Number: D648

CHARTER ENERGY
Start Test Date: 2009/11/29
Final Test Date: 2009/11/29

TEICHMAN #3





This is an actual photograph of recorder chart.

POINT	PRESSURE		
	Field Reading	Elec. Office Reading	
(A) Initial Hydrostatic Mud	1748	1748	PSI
(B) First Initial Flow Pressure.....	40	40	PSI
(C) First Final Flow Pressure	107	107	PSI
(D) Initial Closed-in Pressure	1194	1194	PSI
(E) Second Initial Flow Pressure	126	126	PSI
(F) Second Final Flow Pressure.....	181	181	PSI
(G) Final Closed-in Pressure.....	1196	1196	PSI
(H) Final Hydrostatic Mud.....	1712	1712	PSI