

*R.L. Bowman*  
*Rob*

**DRILL STEM TEST DATA**

Lease	Ahnert	Well No.	1	Date	4/6/82	
County	Stafford Sec. 10	Twp	22	Rng.	12	
Company	L. D. DRilling Co.				Test No.	1
Contractor	L. D. Drilling Co. #1				Zone Tested	Lansing
Charge To	L. D. Drilling Co.				Ticket #	5393Tx
Approved By	Bruce A. Reed				Tester	R. L. Bowman

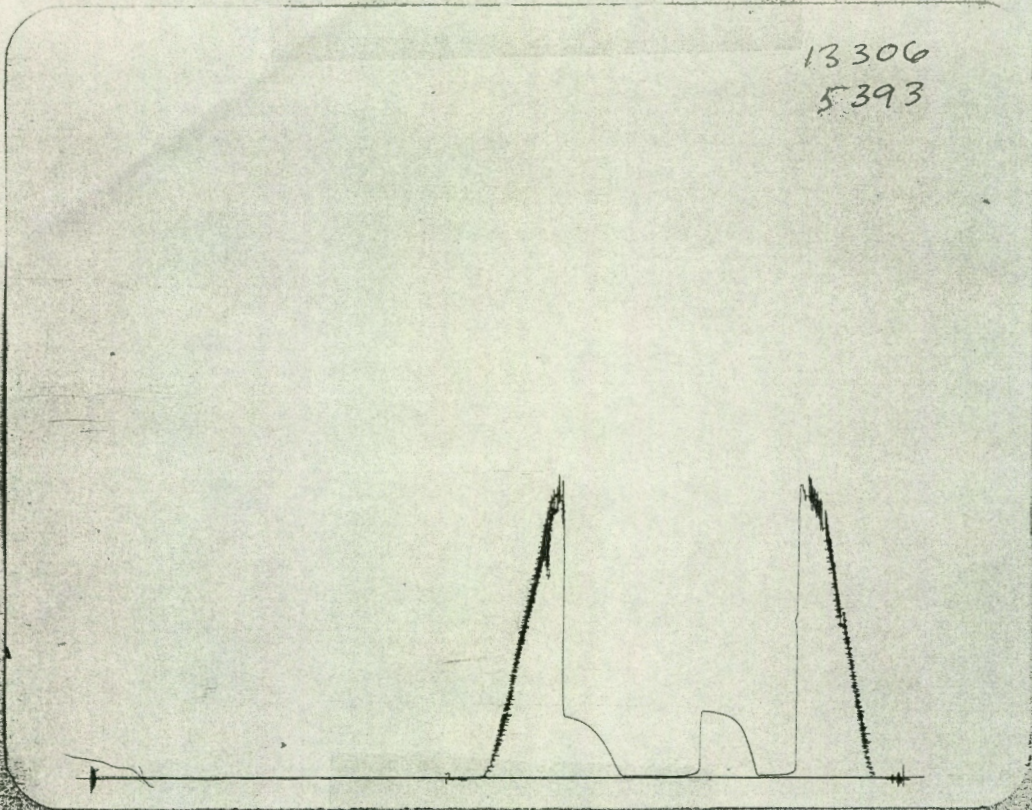
Initial Hydro Mud Press. 1819 P.S.I.  
Initial Flow Press. 105 To 58 P.S.I. Initial Flow Period 30 Min.  
Initial Shut-in Press. 422 P.S.I. Initial Shut-in 45 Min.  
Final Flow Press. 103 To 46 P.S.I. Final Flow Period 60 Min.  
Final Shut-in Press. 387 P.S.I. Final Shut-in 45 Min.  
Final Hydro Mud Press. 1789 P.S.I. TIME TOOL OPEN 6:34AM  
Temperature 94 Deg.  
Mud Weight 9.8 Viscosity 42  
Fluid Loss 11.2  
Interval Tested 3296 To 3320  
Top Packer Depth 3291 Surface Choke Size  
Bottom Packer Depth 3296 Bottom Choke Size 5/8"  
Total Depth 3320 Main Hole Size 7 7/8"  
Drill Pipe Size Wt Rubber Size 6 3/4"  
Drill Collar I.D. Ft. Run  
Blow IFP good building to strong in 3 mins. FFP Strong blow through out.  
Recovery 30' slightly oil stained gassy drilling mud 1586; of gas in pipe

*90' on floor*



TOP

13306  
5393



BOTTOM

B 13307  
5393





DRILL STEM TEST DATA

Lease	Ahnert	Well No.	1	Date	4/6/82
County	Stafford Sec. 10	Twp. 22	Rng. 12	Elevation	1851 KB
Company	L. D. Drilling Inc.			Test No.	2
Contractor	L. D. Drilling Inc. #1			Zone Tested	Lansing
Charge To	L.D. Drilling Inc.			Ticket #	5394Tx
Approved By	Bruce A. Reed			Tester	R. L. Bowman

Initial Hydro Mud Press. 1881 P.S.I.

Initial Flow Press. 93 To 58 P.S.I. Initial Flow Period 30 Min.

Initial Shut-in Press. 408 P.S.I. Initial Shut-in 45 Min.

Final Flow Press. 96 To 63 P.S.I. Final Flow Period 60 Min.

Final Shut-in Press. 349 P.S.I. Final Shut-in 45 Min.

Final Hydro Mud Press. 1853 P.S.I. TIME TOOL OPEN 6:45 PM

Temperature 99 Deg.

Mud Weight 9.8 Viscosity 55

Fluid Loss 11.8

Interval Tested 3326 To 3350

Top Packer Depth 3321 Surface Choke Size

Bottom Packer Depth 3326 Bottom Choke Size 5/8

Total Depth 3350 Main Hole Size 7 7/8

Drill Pipe Size Wt Rubber Size 6 3/4

Drill Collar I.D. Ft. Run

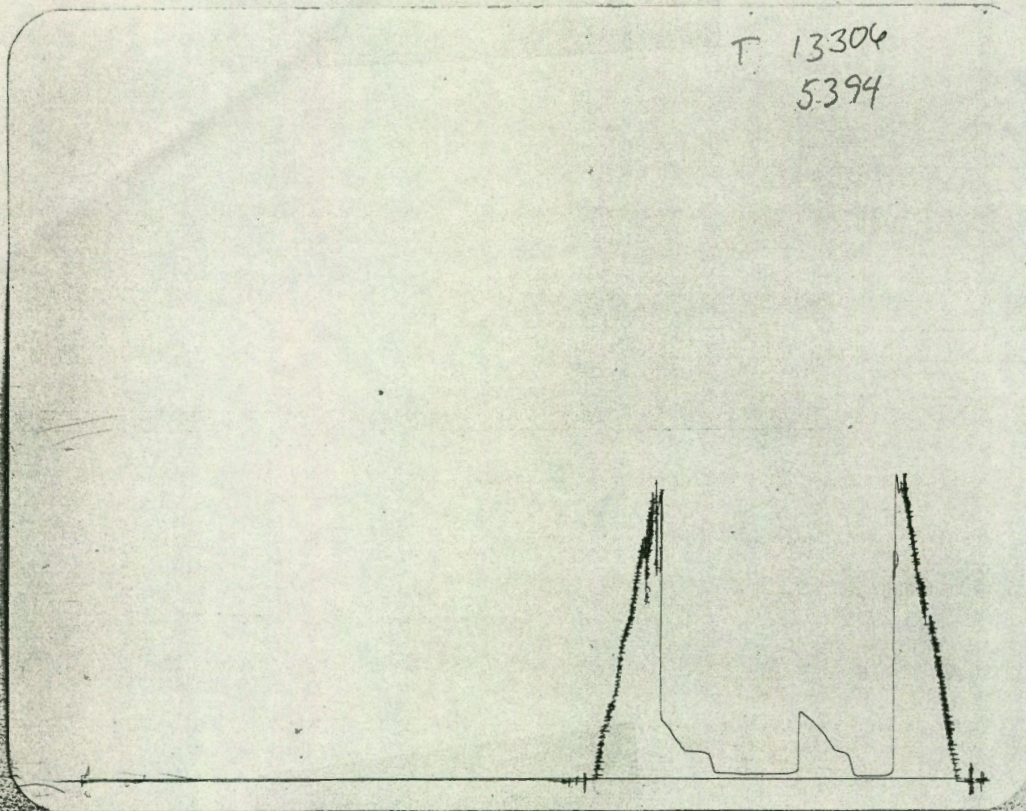
Blow IFP weak building to strong in 3 min. F.F. P. Strong throughout

Recovery 854' Gas in pipe, 70' gassy watery mud



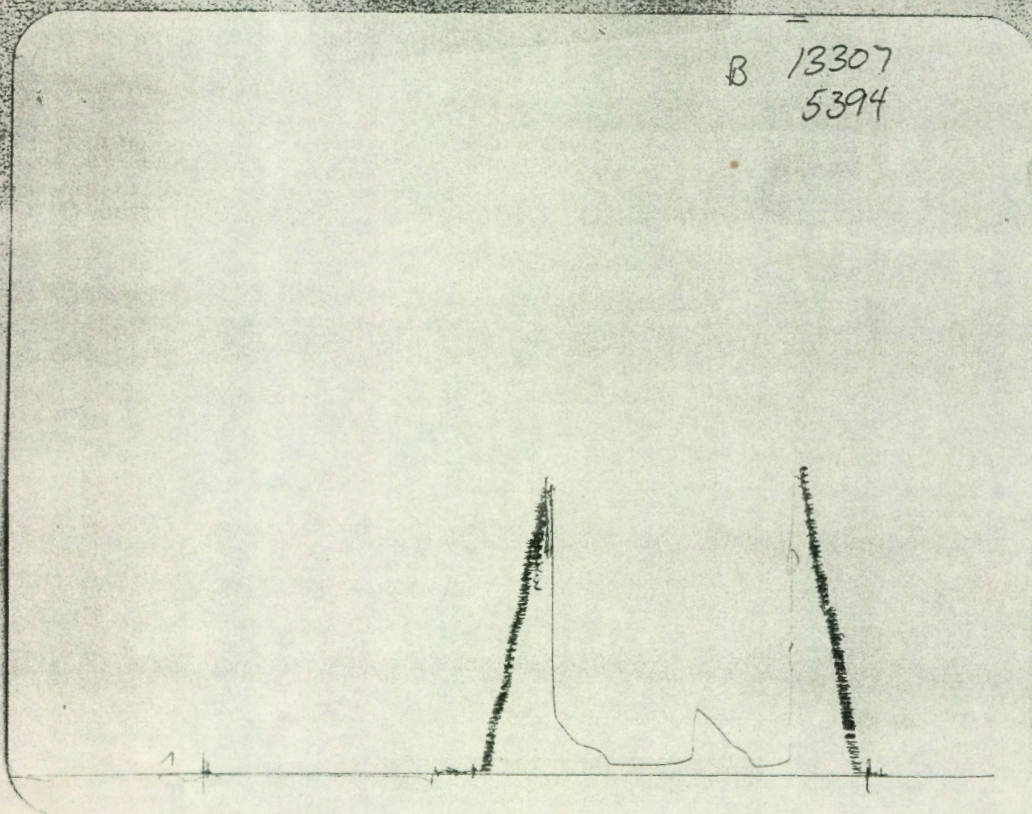
TOP

T 13306  
5.394



BOTTOM

B 13307  
5394





Sun Oil Well Cementing  
A Division of B-J Hughes, Inc.  
P.O. Box 169 Great Bend, Kansas 67530

DRILL STEM TEST DATA

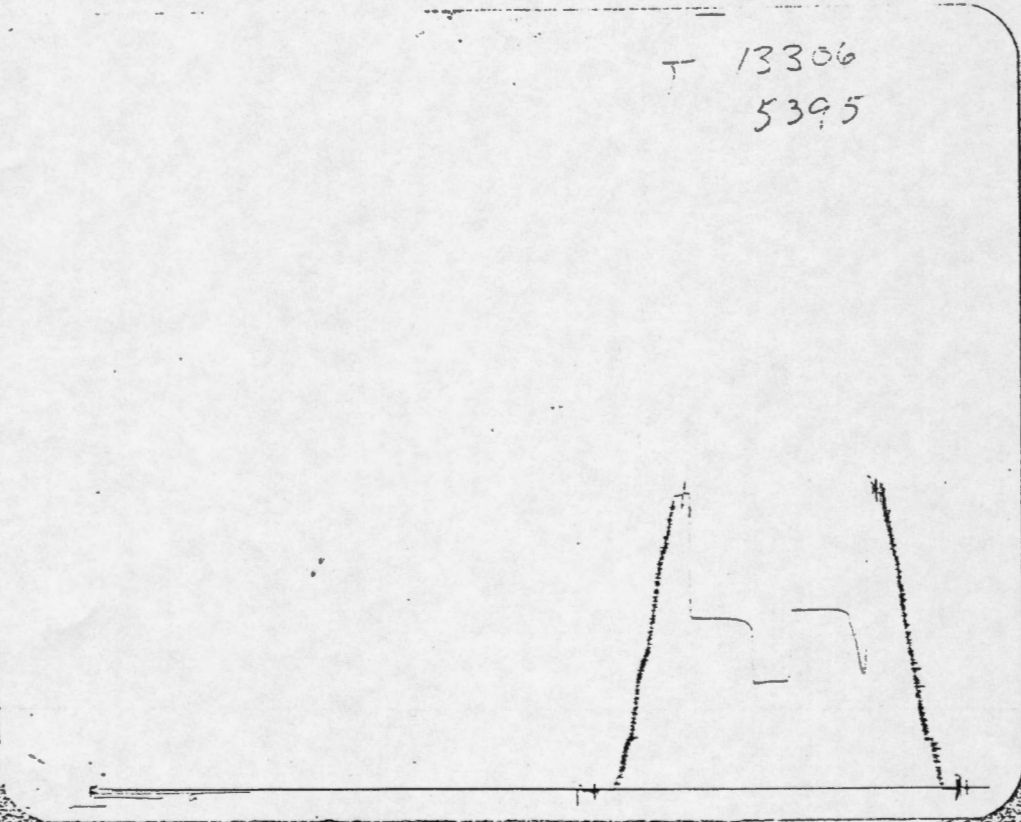
Lease	Ahnert	Well No.	1	Date	4/7/82
County	Stafford Sec. 10	Twp.	22 Rng. 12	Elevation	1851 KB
Company	L. D. DRilling Inc.			Test No.	3
Contractor	L. D. Drilling Inc. #1			Zone Tested	KC
Charge To	L. D. Drilling Inc.			Ticket #	5395Tx
Approved By	Bruce A Reed			Tester	R. L. Bowman

Initial Hydro Mud Press. 1881 P.S.I.  
Initial Flow Press. 689 To 979 P.S.I. Initial Flow Period 15 Min.  
Initial Shut-in Press. 1071 P.S.I. Initial Shut-in 45 Min.  
Final Flow Press. 643 To 631 P.S.I. Final Flow Period 30 Min.  
Final Shut-in Press. 1025 P.S.I. Final Shut-in 45 Min.  
Final Hydro Mud Press. 1856 P.S.I. TIME TOOL OPEN 1:30 PM  
Temperature 100 Deg.  
Mud Weight 10.0 Viscosity 44  
Fluid Loss 19.6  
Interval Tested 3427 To 3460  
Top Packer Depth 3422 Surface Choke Size 2"  
Bottom Packer Depth 3427 Bottom Choke Size 5/8  
Total Depth 3460 Main Hole Size 7 7/8  
Drill Pipe Size \_\_\_\_\_ Wt \_\_\_\_\_ Rubber Size 6 3/4  
Drill Collar I.D. \_\_\_\_\_ Ft. Run \_\_\_\_\_  
Blow IFP Very strong gas to surface 4 min. FFP gas measured 10,240,000  
Recovery 25' gassy drilling mud



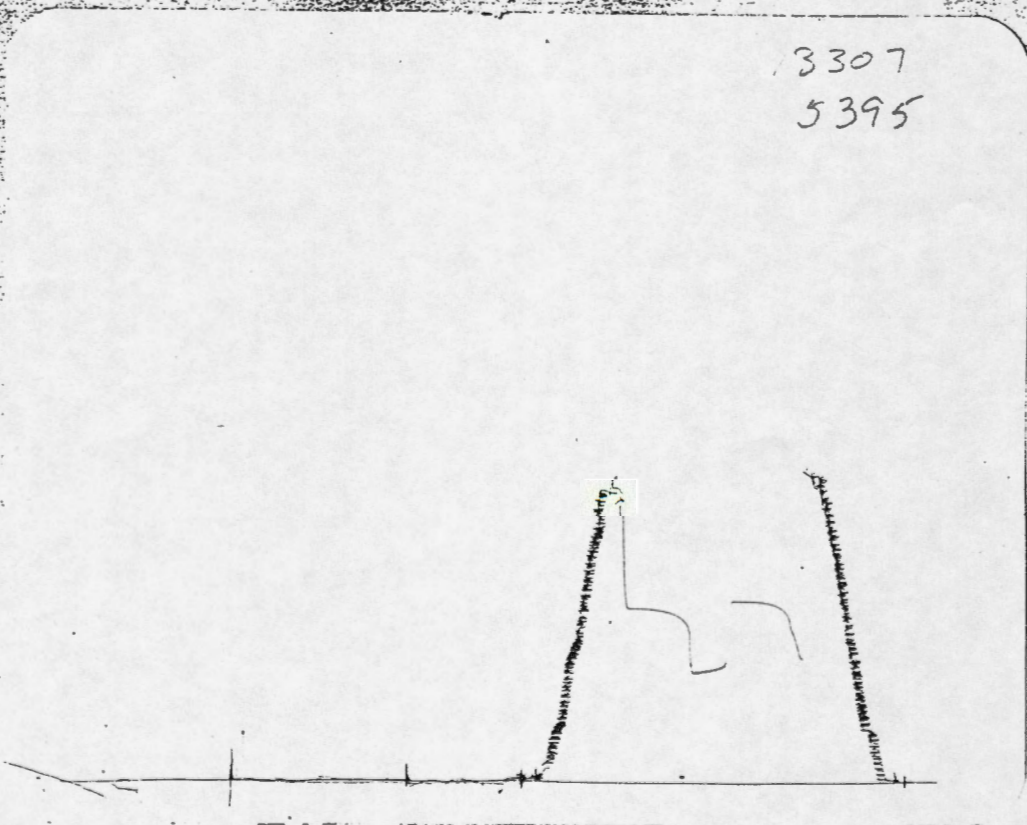
TOP

T 13306  
5395



BOTTOM

3307  
5395





STAFFORD  
KANSAS

6/15 022S 012W 10  
AHNERT  
LAT: 38.15184

UNITS: BRITISH  
LICENSE NO: 21580

LONG: 98.62283

GROUND:

KELLY BUSHING: 1851.00ft

DST# 003 INTERVAL: 3427.0 to 3460.0ft

TOTAL DEPTH: 3460.00ft

FORMATIONS: ILNSG LANSING  
FNONE UNKNOWN  
RKSSC KANSAS CITY

TEST CO: SUN  
TYPE: CBH  
DATE: 82 04 07  
QUALITY CODE: D  
WHY: 30 12

RECORDER NO: 013306  
RECORDER DEPTH: 3427.00ft  
SUBSEA: -1576.00ft  
CAPACITY:

RECORDER TYPE:  
RECORDER TEMP:  
TEMP DEPTH:  
BOTTOM HOLE TEMP: 100.00F

HORNER

	TIMES (min)	PRESSURE (psi)	EXTRAP(G) (psi)	SLOPE(G) ((psi^2/10^6)/cycle)	PERM: AV DAMAGE: NO HF: G
Preflow	15.0	689.00			
Initial SI	45.0	979.00	1071.00	0.0000	
		643.00			GAS MEASUREMENTS
2nd flow	30.0	631.00			MAX: 10239.9992mcf/d
Final SI	45.0	1025.00	1027.60	0.0168	FIRST: 10239.9992mcf/d LAST: 10239.9992mcf/d
INITIAL HYDROSTATIC:		1881.00			ASSIGNED P-MAX: 1071.00
FINAL HYDROSTATIC:		1856.00			PRESSURE/DEPTH: 0.31

RECOVERY DESCRIPTION

25.0ft Gassy drilling mud.

BLOW DESCRIPTION

Very strong gas to surface in 4 minutes on pre-flow. Gas to surface on final flow, no time given. Only one gas rate provided.

GENERAL COMMENTS

Only one set of pressures provided, recorder number not specified, assumed to be recorder #13306. No recorder depth given for recorder used, estimated from top of the tested interval.

DRILL PIPE TYPE:  
LENGTH:  
WEIGHT:  
OUTER DIAMETER:  
INTERNAL DIAMETER:  
DRILL COLLAR TYPE:  
LENGTH:  
OUTER DIAMETER:  
INTERNAL DIAMETER:

CUSHION TYPE:  
LIQUID CUSHION:  
GAS CUSHION:  
INHIBITOR:  
MUD TYPE: N/A  
MUD WEIGHT: 10.00lb/gal  
SALINITY:  
CHLORIDE CONTENT:



DRILL STEM TEST DATA

Lease	Ahnert	Well No.	1	Date	4/8/82
County	Stafford Sec. 10	Twp.	22 Rng. 12	Elevation	1851 KB
Company	L. D. Drilling Inc.			Test No.	4
Contractor	L. D. Drilling Inc. #1			Zone Tested	Arb.
Charge To	L. D. Drilling Inc.			Ticket #	5396Tx
Approved By	Bruce Reed			Tester	R. L. Bowman

Initial Hydro Mud Press. ----- P.S.I.

Initial Flow Press. ----- To ----- P.S.I. Initial Flow Period ----- Min.

Initial Shut-in Press. ----- P.S.I. Initial Shut-in ----- Min.

Final Flow Press. ----- To ----- P.S.I. Final Flow Period ----- Min.

Final Shut-in Press. ----- P.S.I. Final Shut-in ----- Min.

Final Hydro Mud Press. ----- P.S.I. TIME TOOL OPEN -----

Temperature -----

Mud Weight 10.1 Viscosity 54

Fluid Loss 14.4

Interval Tested 3635 To 3640

Top Packer Depth 3630 Surface Choke Size -----

Bottom Packer Depth 3635 Bottom Choke Size 5/8

Total Depth 3640 Main Hole Size 7 7/8

Drill Pipe Size ----- Wt ----- Rubber Size 6 3/4

Drill Collar I.D. ----- Ft. Run -----

Blow -----

Recovery Hit Bridge at 2570

-----

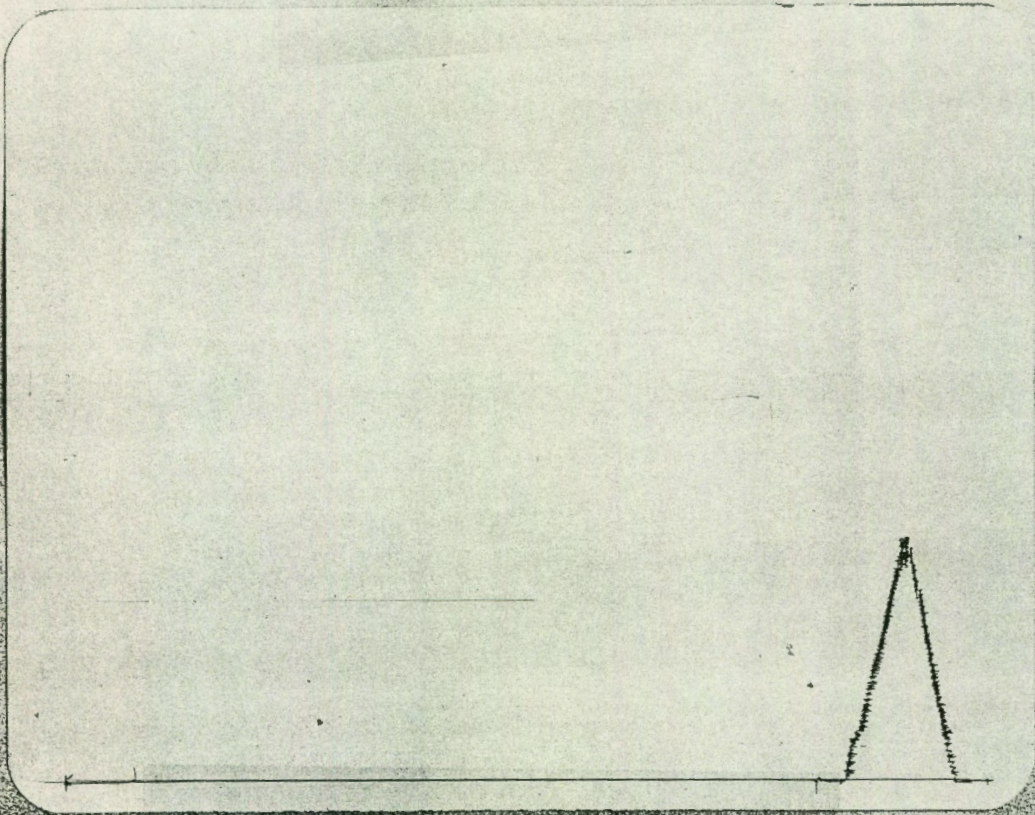
-----

-----

-----



TOP



BOTTOM



DRILL STEM TEST DATA

Lease	Ahnert	Well No.	1	Date	4/9/82
County	Stafford Sec. 10	Twp. 22	Rng. 12	Elevation	1851 KB
Company	L. D. Drilling Inc.			Test No.	5
Contractor	L. D. Drilling Inc. #1			Zone Tested	Arb.
Charge To	L. D. Drilling Inc.			Ticket #	5397Tx
Approved By	Bruce A. Reed			Tester	R. L. Bowman

Initial Hydro Mud Press. 2101 P.S.I.

Initial Flow Press. 70 To 152 P.S.I. Initial Flow Period 30 Min.

Initial Shut-in Press. 898 P.S.I. Initial Shut-in 30 Min.

Final Flow Press. 199 To 265 P.S.I. Final Flow Period 30 Min.

Final Shut-in Press. 858 P.S.I. Final Shut-in 30 Min.

Final Hydro Mud Press. 2081 P.S.I. TIME TOOL OPEN 1201 Am

Temperature N/A

Mud Weight 9.9 Viscosity 49

Fluid Loss 15.2

Interval Tested 3635 To 3640

Top Packer Depth 3630 Surface Choke Size

Bottom Packer Depth 3635 Bottom Choke Size 5/8

Total Depth 3640 Main Hole Size 7 7/8

Drill Pipe Size Wt Rubber Size 6 3/4

Drill Collar I.D. Ft. Run

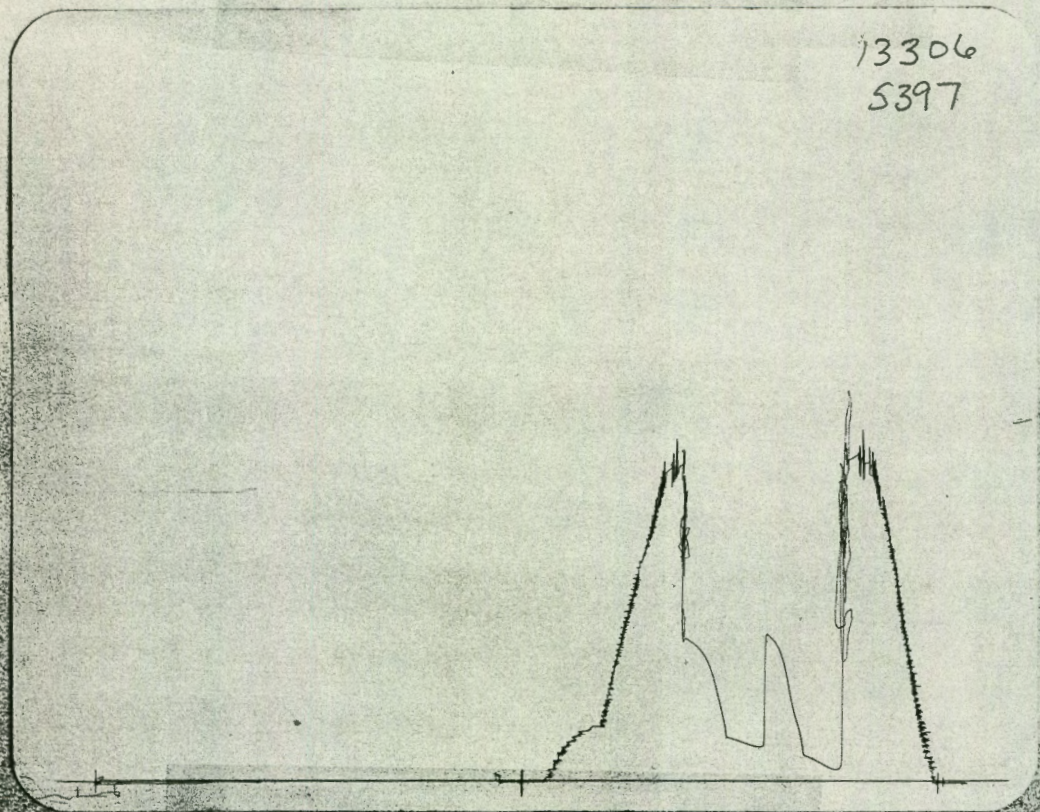
Blow IFP Strong blow in 30 seconds. F.F.P. Strong through out

Recovery 680' total Recovery. 80' gassy oil cut mud 120' gas oil & mud cut water.  
480 Gassy water



TOP

13306  
5397



BOTTOM