

15-185-23377-00-00

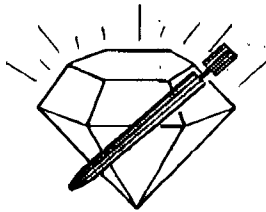
DIAMOND TESTING

P.O. Box 157

HOISINGTON, KANSAS 67544
(620) 653-7550 • (800) 542-7313

DRILL-STEM TEST TICKET

OFF REC 21108 0319 8/20



Company L. D. DRILLING INC Lease & Well No. GRIMES "A" #1
Contractor L. D. DRILLING RIG Charge to L. D. DRILLING INC.
Elevation 1900 K.B. Formation LKC I Effective Pay _____ Ft. Ticket No. _____
Date 8/20/06 Sec. 28 Twp. 22 S Range 13 W County STAFFORD State KS
Test Approved By KIM SHAWMOR Diamond Representative JOHN C. RIEDL

Formation Test No. 1 Interval Tested from 3544 ft. to 3632 ft. Total Depth 3632 ft.
Packer Depth 3539 ft. Size 6 3/4 in. Packer Depth _____ ft. Size _____ in.
Packer Depth 3544 ft. Size 6 3/4 in. Packer Depth _____ ft. Size _____ in.
Depth of Selective Zone Set _____

Top Recorder Depth (Inside) 3547 ft. Recorder Number 21108 Cap. 5000 P.S.I.
Bottom Recorder Depth (Outside) 3629 ft. Recorder Number 11017 Cap. 4000 P.S.I.
Below Straddle Recorder Depth _____ ft. Recorder Number _____ Cap. _____ P.S.I.

Mud Type CHEMICAL Viscosity 72 Drill Collar Length 0 ft. I.D. 2 1/4 in.
Weight 9.2 Water Loss 11.2 cc. Weight Pipe Length 0 ft. I.D. 2 7/8 in.
Chlorides 3300 P.P.M. Drill Pipe Length 3504 ft. I.D. 3 1/2 in.
Jars: Make BOWEN Serial Number NOT BBN Test Tool Length 20 ft. Tool Size 3 1/2-IF in.
Did Well Flow? NO Reversed Out NO Anchor Length 88 ft. Size 4 1/2-FH in.
Main Hole Size 7 7/8 Tool Joint Size 4 1/2 in. Surface Choke Size 1 in. Bottom Choke Size 5/8 in.

Blow: 1st Open: STRONG (B.O.B 2 MINUTES) NO RES
2nd Open: STRONG (B.O.B IMMEDIATELY) RECEIVED

Recovered 1050 ft. of GAS IN PIPE
Recovered 35 ft. of SLOGGM (10% OIL 30 GPM 60% MUD)
Recovered 120 ft. of SLWCGMOC (10% WATER 20% MUD 30% MUD 40% OIL)

Recovered _____ ft. of CHLORIDES 26,000 ppm
Recovered _____ ft. of _____
Remarks: 155' TOTAL FLUID REC ALL IN D.P.
Price Job _____
Other Charges PLUGGING JARS SET
Insurance FROM HOIS 30 TO HOIS 30 TOTAL 60
Total _____

Time Set Packer(s) 4:47 A.M. Time Started Off Bottom 7:45 A.M. Maximum Temperature 109°
Initial Hydrostatic Pressure (A) 1696 P.S.I.
Initial Flow Period Minutes 30 (B) 45 P.S.I. to (C) 67 P.S.I.
Initial Closed In Period Minutes 45 (D) 623 P.S.I.
Final Flow Period Minutes 45 (E) 77 P.S.I. to (F) 95 P.S.I.
Final Closed In Period Minutes 60 (G) 656 P.S.I.
Final Hydrostatic Pressure (H) 1670 P.S.I.

Diamond Testing shall not be liable for damages of any kind to the property or personnel of the one for whom a test is made or for any loss suffered or sustained, directly or indirectly, through the use of its equipment, or its statement or opinion concerning the result of any test. Tools lost or damaged in the hole shall be paid for at cost by the party for whom the test is made.

28-22-13N

GENERAL INFORMATION

Client Information:

Company: L D DRILLING INC

Contact: L D DAVIS

Phone: Fax: e-mail:

Site Information:

Contact: KIM SHOEMAKER

Phone: Fax: e-mail:

Well Information:

Name: GRIMES "A" #1

Operator: L D DRILLING INC

Location-Downhole: DST #1 3544 TO 3632

Location-Surface: S28/22S/13W STAFFORD COUNTY

Test Information:

Company: DIAMOND TESTING

Representative: JOHN RIEDL

Supervisor: KIM SHOEMAKER

Test Type: CONVENTIONAL Job Number: D314

Test Unit: 2

Start Date: 2006/08/20 Start Time: 15:15:00

End Date: 2006/08/20 End Time: 21:55:00

Report Date: 2006/08/20 Prepared By: JOHN RIEDL

Qualified By: KIM SHOEMAKER

Remarks:

REC: 1050' GAS IN PIPE
35' SL0CGM (10%OIL 30%GAS 60%MUD)
120' SLWCGMO (10%WATER 20%MUD 30%GAS 40%OIL)
CHLORIDES 26,000Ppm

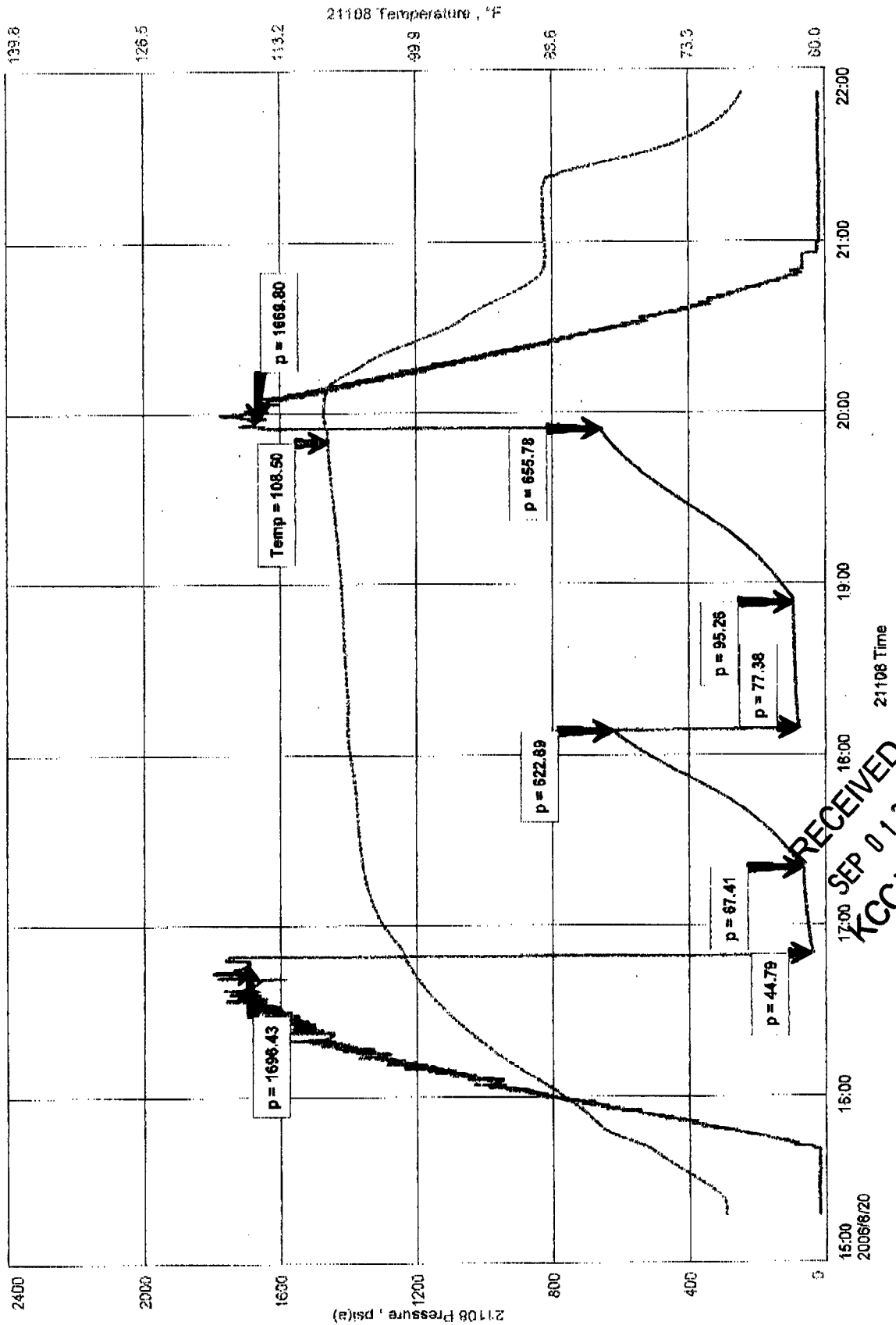
RECEIVED
SEP 01 2006
KCC WICHITA



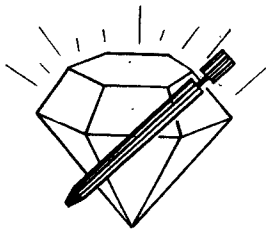
GRIMES "A" #1
Formation: LKC "I"
Job Number: D314

GRIMES "A" #1

L D DRILLING INC
DST #1 3544 TO 3632
Start Test Date: 2006/08/20
Final Test Date: 2006/08/20



RECEIVED
SEP 01 2006
KCC WICHITA



DIAMOND TESTING
 P.O. Box 157
 HOISINGTON, KANSAS 67544
 (620) 653-7550 • (800) 542-7313

DIAMOND TESTING 8121
 O.F. 11.30
 0315
 151 2113

DRILL-STEM TEST TICKET

Company L.D. DRILLING INC Lease & Well No. GRIMES 'A' #1
 Contractor L.D. DRILLING RIG 1 Charge to L.D. DRILLING INC
 Elevation 1900 K.B Formation VIOLA Effective Pay _____ Ft. Ticket No. _____
 Date 8/21/08 Sec. 28 Twp. 22S Range 13 W County STAFFORD State KS
 Test Approved By KIM STONMAYER Diamond Representative JOHN C. RIEDL

Formation Test No. 2 Interval Tested from 3654 ft. to 3772 ft. Total Depth 3772 ft.
 Packer Depth 3649 ft. Size 6 3/4 in. Packer Depth _____ ft. Size _____ in.
 Packer Depth 3654 ft. Size 6 3/4 in. Packer Depth _____ ft. Size _____ in.
 Depth of Selective Zone Set _____

Top Recorder Depth (Inside) 3657 ft. Recorder Number 21108 Cap. 5000 P.S.I.
 Bottom Recorder Depth (Outside) 3769 ft. Recorder Number 11017 Cap. 4000 P.S.I.
 Below Straddle Recorder Depth _____ ft. Recorder Number _____ Cap. _____ P.S.I.

Mud Type CHEMICAL Viscosity 72 Drill Collar Length 0 ft. I.D. 2 1/4 in.
 Weight 9.2 Water Loss 11.2 cc. Weight Pipe Length 0 ft. I.D. 2 7/8 in.
 Chlorides 3300 P.P.M. Drill Pipe Length 3628 ft. I.D. 3 1/2 in.
 Jars: Make BOWEN Serial Number NOT USED Test Tool Length 26 ft. Tool Size 3 1/2-IF in.
 Did Well Flow? NO Reversed Out NO Anchor Length 118 ft. Size 4 1/2-FH in.
 Main Hole Size 7 7/8 Tool Joint Size 4 1/2 in. Surface Choke Size 1 in. Bottom Choke Size 5/8 in.

Blow: 1st Open: WEAK (DEAD 17 MINUTES)
 2nd Open: _____

Recovered 8 ft. of DRILLING MUD WITH SOME OIL SPICKS
 Recovered _____ ft. of _____
 Recovered _____ ft. of _____

RECEIVED
 SEP 01 2008
 KCC WICHITA

Recovered _____ ft. of _____	Price Job
Remarks: _____	Other Charges <u>ELECTRICAL</u>
	Insurance
	FROM HOIS 30
	TO HOIS 30
	60
	Total

Time Set Packer(s) 11:45 ^{A.M.} P.M. Time Started Off Bottom 12:45 ^{A.M.} P.M. Maximum Temperature 105
 Initial Hydrostatic Pressure (A) 1792 P.S.I.
 Initial Flow Period Minutes 30 (B) 38 P.S.I. to (C) 54 P.S.I.
 Initial Closed In Period Minutes 30 (D) 22 P.S.I.
 Final Flow Period Minutes _____ (E) _____ P.S.I. to (F) _____ P.S.I.
 Final Closed In Period Minutes _____ (G) _____ P.S.I.
 Final Hydrostatic Pressure (H) 1733 P.S.I.

Diamond Testing shall not be liable for damages of any kind to the property or personnel of the one for whom a test is made or for any loss suffered or sustained, directly or indirectly, through the use of its equipment, or its statement or opinion concerning the result of any test. Tools lost or damaged in the hole shall be paid for at cost by the party for whom the test is made.

GENERAL INFORMATION

Client Information:

Company: L D DRILLING INC

Contact: L D DAVIS

Phone: Fax: e-mail:

Site Information:

Contact: KIM SHOEMAKER

Phone: Fax: e-mail:

Well Information:

Name: GRIMES A" #1

Operator: L D DRILLING INC

Location-Downhole: DST #2 3654 TO 3772

Location-Surface: S28/22S/13W STAFFORD COUNTY

Test Information:

Company: DIAMOND TESTING

Representative: JOHN RIEDL

Supervisor: KIM SHOEMAKER

Test Type: CONVENTIONAL Job Number: D315

Test Unit: 2

Start Date: 2006/08/21 Start Time: 10:10:00

End Date: 2006/08/21 End Time: 14:30:00

Report Date: 2006/08/21 Prepared By: JOHN RIEDL

Qualified By: KIM SHOEMAKER

Remarks:

RECOVERY: 8' DRILLING MUD WITH OIL SPECKS

RECEIVED

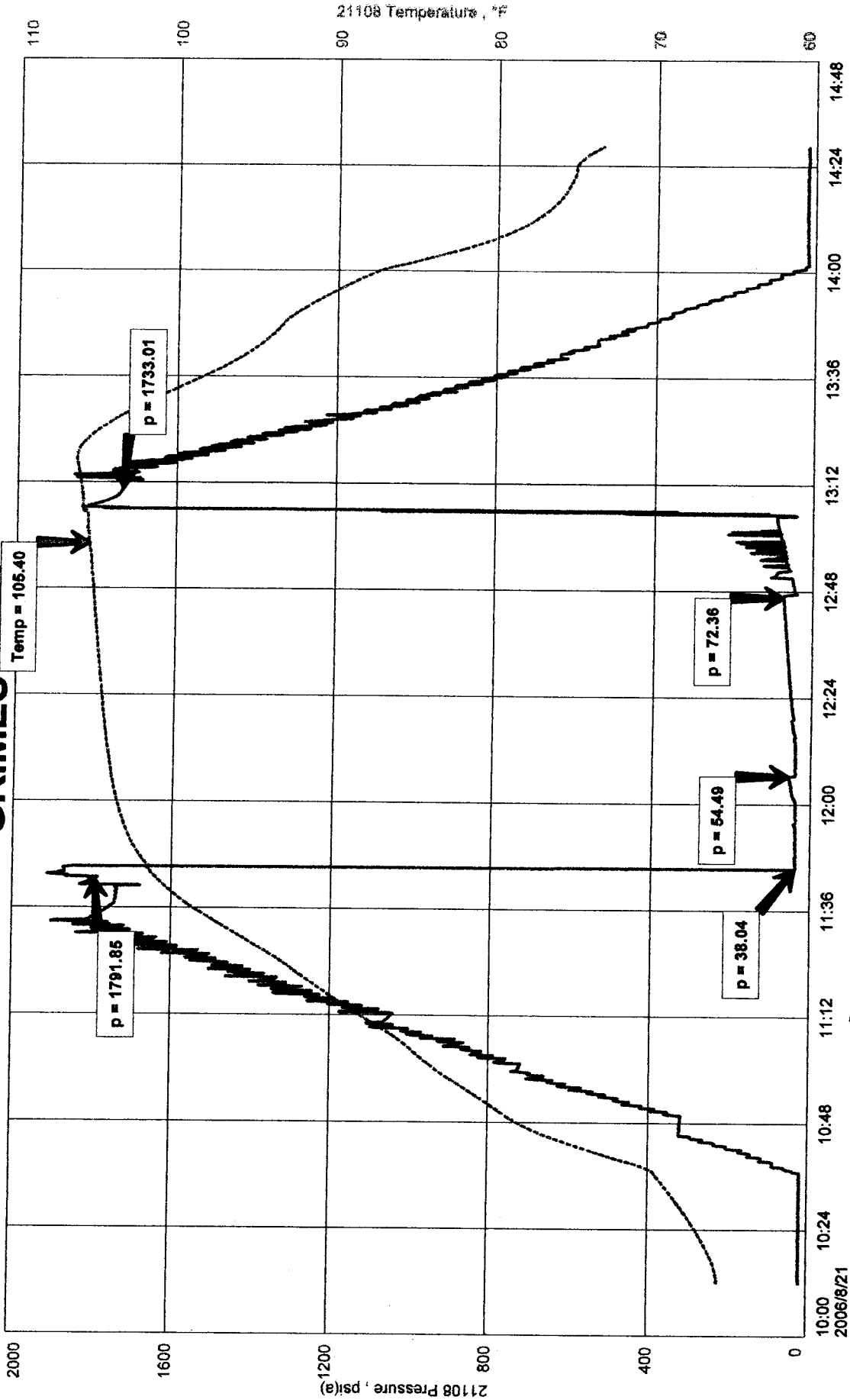
SEP 01 2006

KCC WICHITA

LD DRILLING INC
 DST #2 3654 TO 3772
 Start Test Date: 2006/08/21
 Final Test Date: 2006/08/21

GRIMES A" #1
 Formation: VIOLA
 Job Number: D315

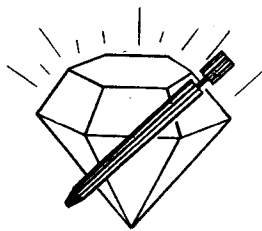
GRIMES A" #1



RECEIVED
 SEP 01 2006

KCC WICHITA





DIAMOND TESTING
 P.O. Box 157
 HOISINGTON, KANSAS 67544
 (620) 653-7550 (800) 542-7313

BHTK 70W 1:30 8122
 OFF 8:55
 REC 21108
 0316

DRILL-STEM TEST TICKET

Company L.O. DRILLING INC Lease & Well No. GRIMES "A" #1
 Contractor L.O. DRILLING INC RIG 1 Charge to L.O. DRILLING INC
 Elevation 900 K.B. Formation ARBUCKLE Effective Pay _____ Ft. Ticket No. _____
 Date 8/22/06 Sec. 22 Twp. 28 S Range 13 W County STAFFORD State KS
 Test Approved By [Signature] Diamond Representative JOHN C. RIEDL

Formation Test No. 3 Interval Tested from 3840 ft. to 3850 ft. Total Depth 3850 ft.
 Packer Depth 3835 ft. Size 6 3/4 in. Packer Depth _____ ft. Size _____ in.
 Packer Depth 3840 ft. Size 6 3/4 in. Packer Depth _____ ft. Size _____ in.

Depth of Selective Zone Set _____
 Top Recorder Depth (Inside) 3830 ft. Recorder Number 21108 Cap. 5000 P.S.I.
 Bottom Recorder Depth (Outside) 3847 ft. Recorder Number 11017 Cap. 4000 P.S.I.
 Below Straddle Recorder Depth _____ ft. Recorder Number _____ Cap. _____ P.S.I.

Mud Type CHEMICAL Viscosity 70 Drill Collar Length 0 ft. I.D. 2 1/4 in.
 Weight 9.2 Water Loss 15 cc. Weight Pipe Length 0 ft. I.D. 2 7/8 in.
 Chlorides 8,000 P.P.M. Drill Pipe Length 3816 ft. I.D. 3 1/2 in.
 Jars: Make BOWEN Serial Number NOT USED Test Tool Length 24 ft. Tool Size 3 1/2-IF in.
 Did Well Flow? NO Reversed Out NO Anchor Length 10 ft. Size 4 1/2-FH in.
 Main Hole Size 7 7/8 Tool Joint Size 4 1/2 in. Surface Choke Size 1 in. Bottom Choke Size 5/8 in.

Blow: 1st Open: STRONG (BOB 20 MINUTES) NO BB
 2nd Open: STRONG (BOB 21 MINUTES) NO BB

Recovered 1 ft. of MUD OIL
 Recovered 540 ft. of SULFUR WATER (CHLORIDES 24,000 PPM)
 Recovered _____ ft. of _____

Recovered _____ ft. of _____	RECEIVED SEP 01 2006 KCC WICHITA	Price Job
Recovered _____ ft. of _____		Other Charges <u>ELCUT ACC</u>
Remarks: _____		Insurance <u>FROM HOVS 30</u> <u>TO HOVS 30</u> <u>TOTAL 60</u>
_____		Total

Time Set Packer(s) 3:06 ^{A.M.}/_{P.M.} Time Started Off Bottom 6:06 ^{A.M.}/_{P.M.} Maximum Temperature 127
 Initial Hydrostatic Pressure (A) 1837 P.S.I.
 Initial Flow Period Minutes 30 (B) 32 P.S.I. to (C) 127 P.S.I.
 Initial Closed In Period Minutes 45 (D) 1296 P.S.I.
 Final Flow Period Minutes 45 (E) 129 P.S.I. to (F) 263 P.S.I.
 Final Closed In Period Minutes 60 (G) 1292 P.S.I.
 Final Hydrostatic Pressure (H) 1792 P.S.I.

Diamond Testing shall not be liable for damages of any kind to the property or personnel of the one for whom a test is made or for any loss suffered or sustained, directly or indirectly, through the use of its equipment, or its statement or opinion concerning the result of any test. Tools lost or damaged in the hole shall be paid for at cost by the party for whom the test is made.

GENERAL INFORMATION

Client Information:

Company: L D DRILLING INC

Contact: L D DAVIS

Phone: Fax: e-mail:

Site Information:

Contact:

Phone: Fax: e-mail:

Name: GRIMES "A" #1

Operator: L D DRILLING INC

Location-Downhole: DST #3 3840 TO 3850

Location-Surface:

Test Information:

Company: DIAMOND TESTING

Representative: JOHN RIEDL

Supervisor: KIM SHOEMAKER

Test Type: CONVENTIONAL

Job Number: D316

Test Unit: 2

Start Date: 2006/08/22

Start Time: 01:30:00

End Date: 2006/08/22

End Time: 08:55:00

Report Date: 2006/08/22

Prepared By: JOHN RIEDL

Remarks:

Qualified By: KIM SHOEMAKER

RECOVERY: 1' FREE OIL

540' SULFUR WATER (CHLORIDES 24,000Ppm)

RECEIVED

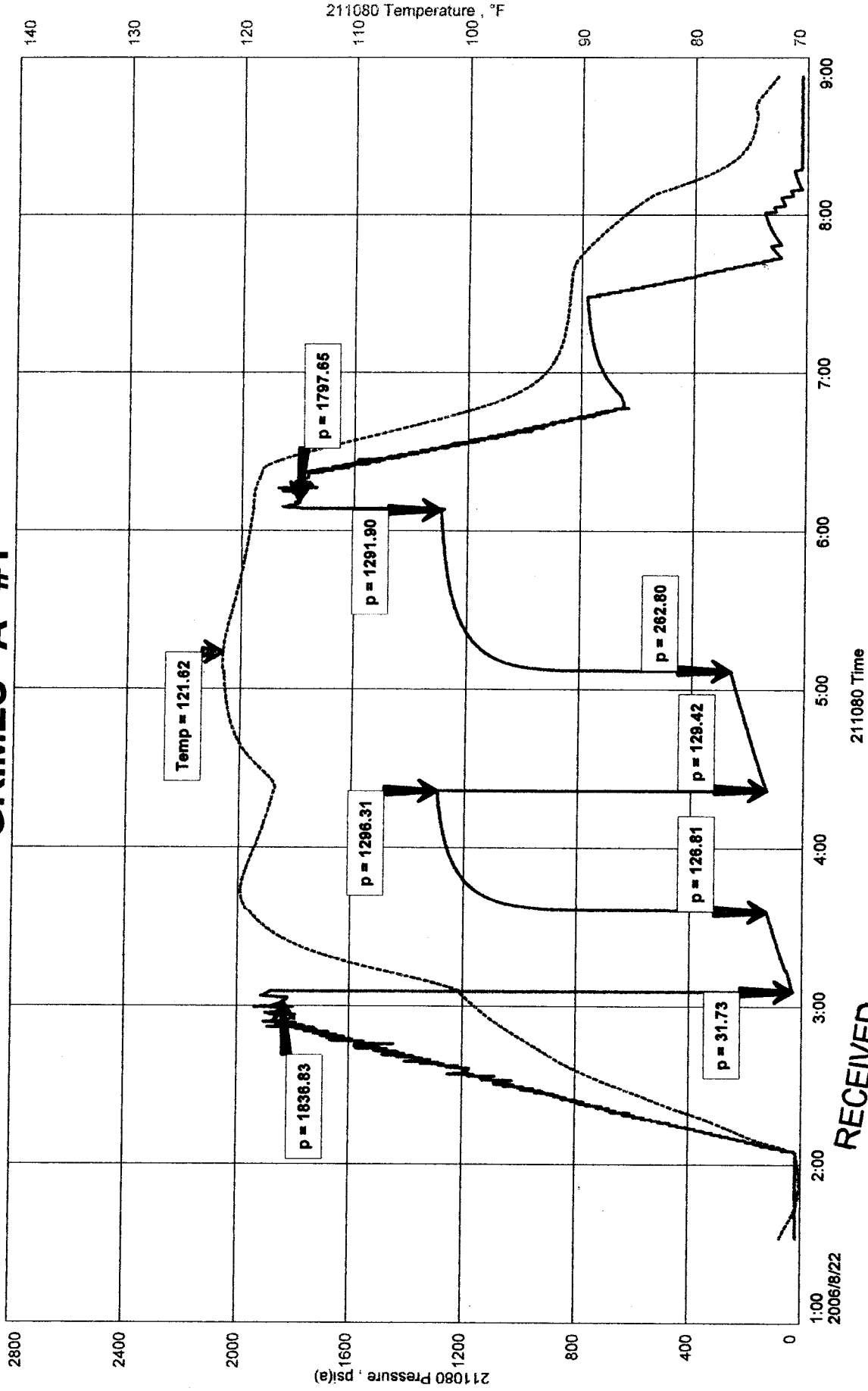
SEP 01 2006

KCC WICHITA

L D DRILLING INC
DST #3 3840 TO 3850
Start Test Date: 2006/08/22
Final Test Date: 2006/08/22

GRIMES "A" #1
Job Number: D316

GRIMES "A" #1



RECEIVED
SEP 01 2006

KCC WICHITA