

DRILL STEM TEST REPORT

Prepared For: **Edison Operating Company**

1223 N. Rock Road
Wichita, Kansas 67206

ATTN: Derek Patterson

Bartlett 1-36

36-22s-14w Stafford

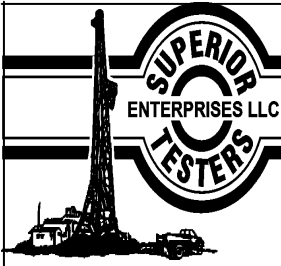
Start Date: 2012.12.04 @ 00:15:00

End Date: 2012.12.04 @ 06:25:00

Job Ticket #: 16982 DST #: 1

Superior Testers Enterprises LLC
PO Box 138 Great Bend KS 67530
1-800-792-6902

Printed: 2012.12.04 @ 06:40:16



DRILL STEM TEST REPORT

Edison Operating Company
 1223 N. Rock Road
 Wichita, Kansas 67206
 ATTN: Derek Patterson

36-22s-14w Stafford
Bartlett 1-36
 Job Ticket: 16982 **DST#: 1**
 Test Start: 2012.12.04 @ 00:15:00

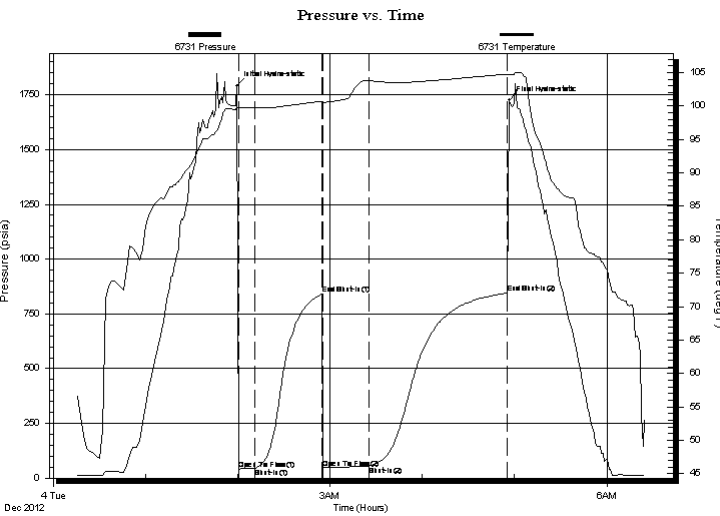
GENERAL INFORMATION:

Formation: **Lansing 'H' Zone**
 Deviated: No Whipstock: ft (KB)
 Test Type: Conventional Bottom Hole (Initial)
 Time Tool Opened: 02:00:30 Tester: Jon Strong
 Time Test Ended: 06:25:00 Unit No: 3320- Great Bend- 36
 Interval: **3576.00 ft (KB) To 3595.00 ft (KB) (TVD)** Reference Elevations: 1926.00 ft (KB)
 Total Depth: 3595.00 ft (KB) (TVD) 1921.50 ft (CF)
 Hole Diameter: 7.88 inches Hole Condition: Fair KB to GR/CF: 4.50 ft

Serial #: 6731

Press@RunDepth: 53.95 psia @ ft (KB) Capacity: 5000.00 psia
 Start Date: 2012.12.04 End Date: 2012.12.04 Last Calib.: 2012.12.04
 Start Time: 00:15:00 End Time: 06:25:00 Time On Btm: 2012.12.04 @ 01:59:30
 Time Off Btm: 2012.12.04 @ 04:56:30

TEST COMMENT: 1st Opening 30 Minutes- Weak Surface Blow Built To 1/2"
 1st Shut in 45 Minutes- No Blow Back
 2nd Opening 30 Minutes- Weak Surface Blow Stayed Steady Throughout Open
 2nd Shut in 90 Minutes- No Blow Back



PRESSURE SUMMARY

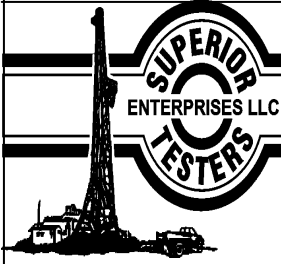
Time (Min.)	Pressure (psia)	Temp (deg F)	Annotation
0	1789.95	99.75	Initial Hydro-static
1	41.57	99.62	Open To Flow (1)
12	44.46	99.71	Shut-In(1)
55	839.36	100.70	End Shut-In(1)
56	46.98	100.54	Open To Flow (2)
86	53.95	103.78	Shut-In(2)
176	845.17	104.77	End Shut-In(2)
177	1725.71	104.69	Final Hydro-static

Recovery

Length (ft)	Description	Volume (bbl)
10.00	mud	0.05

Gas Rates

Choke (inches)	Pressure (psia)	Gas Rate (Mcf/d)



DRILL STEM TEST REPORT

TOOL DIAGRAM

Edison Operating Company

36-22s-14w Stafford

1223 N. Rock Road
Wichita, Kansas 67206

Bartlett 1-36

Job Ticket: 16982

DST#: 1

ATTN: Derek Patterson

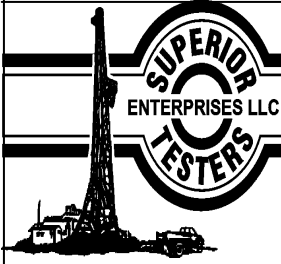
Test Start: 2012.12.04 @ 00:15:00

Tool Information

Drill Pipe:	Length: 3325.00 ft	Diameter: 3.80 inches	Volume: 46.64 bbl	Tool Weight: 1000.00 lb
Heavy Wt. Pipe:	Length: 0.00 ft	Diameter: 0.00 inches	Volume: 0.00 bbl	Weight set on Packer: 20000.00 lb
Drill Collar:	Length: 240.00 ft	Diameter: 2.25 inches	Volume: 1.18 bbl	Weight to Pull Loose: 60000.00 lb
			<u>Total Volume: 47.82 bbl</u>	Tool Chased 0.00 ft
Drill Pipe Above KB:	17.00 ft			String Weight: Initial 48000.00 lb
Depth to Top Packer:	3576.00 ft			Final 48000.00 lb
Depth to Bottom Packer:	ft			
Interval between Packers:	19.00 ft			
Tool Length:	47.00 ft			
Number of Packers:	2	Diameter: 6.75 inches		
Tool Comments:				

Tool Description	Length (ft)	Serial No.	Position	Depth (ft)	Accum. Lengths
------------------	-------------	------------	----------	------------	----------------

Shut-In Tool	5.00			3553.00	
Hydraulic Tool	5.00			3558.00	
Jars	6.00			3564.00	
Safety Joint	2.00			3566.00	
Packer	5.00			3571.00	28.00 Bottom Of Top Packer
Packer	5.00			3576.00	
Anchor	14.00			3590.00	
Recorder	1.00	6731	Inside	3591.00	
Recorder	1.00	8159	Outside	3592.00	
Bullnose	3.00			3595.00	19.00 Bottom Packers & Anchor
Total Tool Length:	47.00				



DRILL STEM TEST REPORT

FLUID SUMMARY

Edison Operating Company

36-22s-14w Stafford

1223 N. Rock Road
Wichita, Kansas 67206

Bartlett 1-36

Job Ticket: 16982

DST#: 1

ATTN: Derek Patterson

Test Start: 2012.12.04 @ 00:15:00

Mud and Cushion Information

Mud Type: Gel Chem

Cushion Type:

Oil API:

deg API

Mud Weight: 9.00 lb/gal

Cushion Length: ft

Water Salinity: ppm

Viscosity: 43.00 sec/qt

Cushion Volume: bbl

Water Loss: 11.20 in³

Gas Cushion Type:

Resistivity: ohm.m

Gas Cushion Pressure: psia

Salinity: 7800.00 ppm

Filter Cake: 1.00 inches

Recovery Information

Recovery Table

Length ft	Description	Volume bbl
10.00	mud	0.049

Total Length: 10.00 ft Total Volume: 0.049 bbl

Num Fluid Samples: 0

Num Gas Bombs: 0

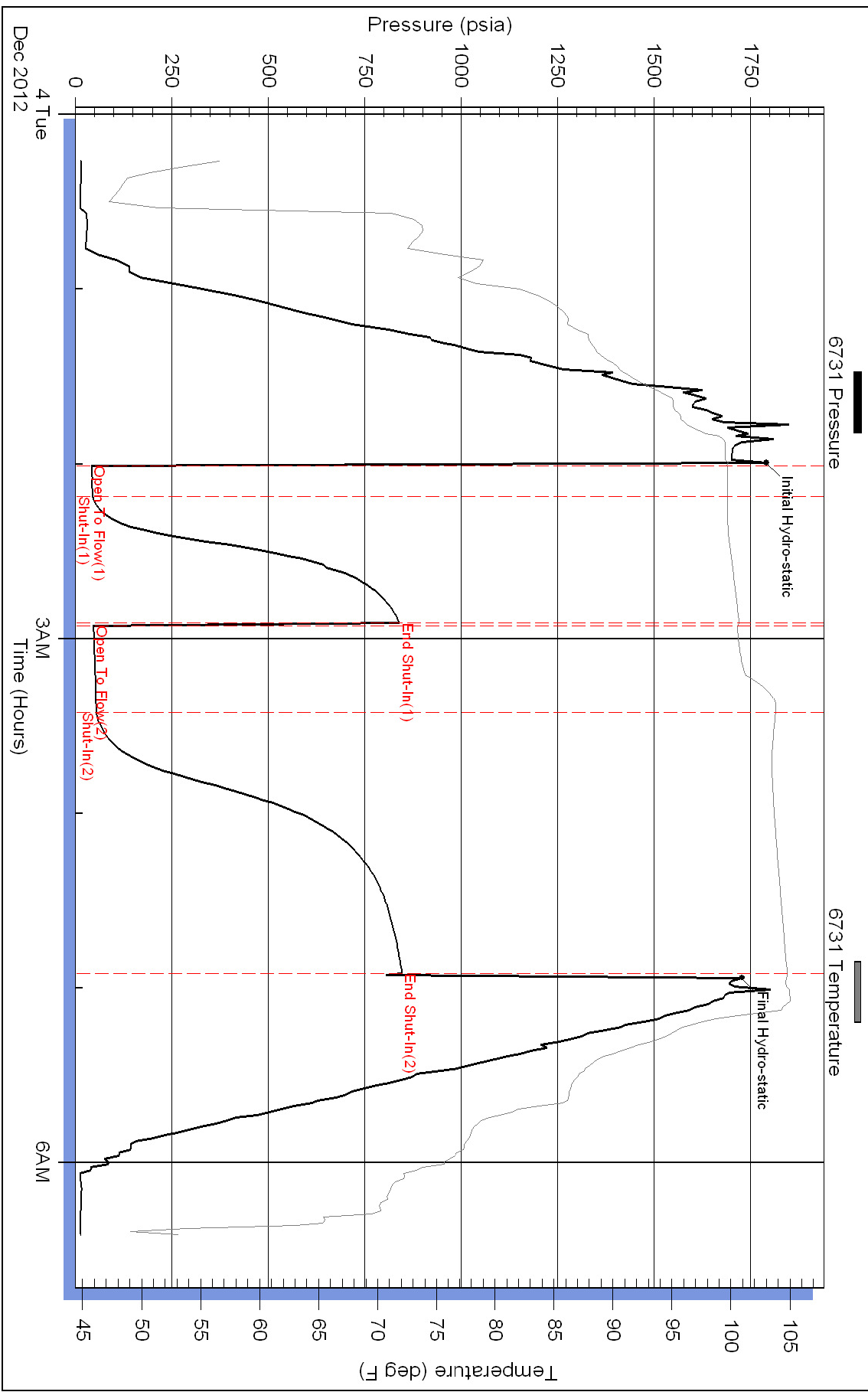
Serial #:

Laboratory Name:

Laboratory Location:

Recovery Comments:

Pressure vs. Time



Pressure vs. Time

