



15-185-23318

11-22s-14w

DIAMOND TESTING

P.O. Box 157
HOISINGTON, KANSAS 67544
(620) 653-7550 • (800) 542-7313
STC 21098.D121

Page 1 of 3 Pages

Company L. D. Drilling, Inc. Lease & Well No. Steckel Farms No. 2-11

Elevation 1936 KB Formation Lansing/Kansas City "H"- "J" Effective Pay -- Ft. Ticket No. 2010

Date 6-9-05 Sec. 11 Twp. 22S Range 14W County Stafford State Kansas

Test Approved By Kim B. Shoemaker Diamond Representative Roger D. Friedly

Formation Test No. 1 Interval Tested from 3,553 ft. to 3,610 ft. Total Depth 3,610 ft.

Packer Depth 3,548 ft. Size 6 3/4 in. Packer Depth -- ft. Size -- in.

Packer Depth 3,553 ft. Size 6 3/4 in. Packer Depth -- ft. Size -- in.

Depth of Selective Zone Set -- ft.

Top Recorder Depth (Inside) 3,541 ft. Recorder Number 21098 Cap. 5,000 psi

Bottom Recorder Depth (Outside) 3,607 ft. Recorder Number 13387 Cap. 4,000 psi

Below Straddle Recorder Depth -- ft. Recorder Number -- Cap. -- psi

Drilling Contractor Petromark Drilling, LLC - Rig 1 Drill Collar Length -- ft. I.D. -- in.

Mud Type Chemical Viscosity 56 Weight Pipe Length -- ft. I.D. -- in.

Weight 9.1 Water Loss 14.8 cc. Drill Pipe Length 3,528 ft. I.D. 3 1/2 in.

Chlorides 4,400 P.P.M. Test Tool Length 25 ft. Tool Size 3 1/2 - IF in.

Jars: Make Bowen Serial Number Not Run Anchor Length 25' perf. w/32' drill pipe Size 4 1/2 - FH in.

Did Well Flow? No Reversed Out No Surface Choke Size 1 in. Bottom Choke Size 5/8 in.

Main Hole Size 7 7/8 in. Tool Joint Size 4 1/2 - XH in.

Blow: 1st Open: Weak, surface blow increasing to 1 in. No blow back during shut-in.

2nd Open: Weak, surface blow in 5 mins. increasing to 1/8 in. No blow back during shut-in.

Recovered 30 ft. of drilling mud with a few oil specks = .426000 bbls.

Recovered -- ft. of --

Recovered -- ft. of --

Recovered -- ft. of --

Recovered -- ft. of --

Remarks Tool Sample Grind Out: 2%-oil; 98%-mud

Time Set Packer(s) 9:10 A.M. P.M. Time Started Off Bottom 11:10 A.M. P.M. Maximum Temperature 103°

Initial Hydrostatic Pressure (A) 1689 P.S.I.

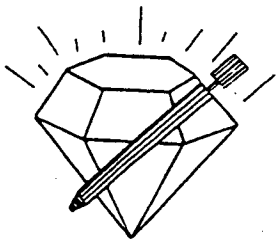
Initial Flow Period Minutes 30 (B) 12 P.S.I. to (C) 18 P.S.I.

Initial Closed In Period Minutes 30 (D) 142 P.S.I.

Final Flow Period Minutes 30 (E) 19 P.S.I. to (F) 21 P.S.I.

Final Closed In Period Minutes 30 (G) 77 P.S.I.

Final Hydrostatic Pressure (H) 1668 P.S.I.



DIAMOND TESTING
P. O. Box 157
HOISINGTON, KANSAS 67544
(800) 542-7313

FLUID SAMPLE DATA

Company L. D. Drilling, Inc.

Lease & Well No. Steckel Farms No. 2-11

Date 6-9-05 Sec. 11 Twp. 22 S Range 14 W

Formation Test No. 1 Interval Tested From 3,553 ft. to 3,610 ft. Total Depth 3,610 ft.

Formation Lansing/Kansas City "H"-"J"

	MUD PIT	RECOVERY
Viscosity	<u>56</u> CP	<u>58</u> CP
Weight	<u>9.1</u>	<u>9.1</u>
Water Loss	<u>14.8</u> CC	<u>16.0</u> CC
PH Factor	<u>10.5</u>	<u>10.0</u>

	RESISTIVITY	CHLORIDE CONTENT
Recovery Water	<u>--</u> @ <u>--</u> °F.	<u>--</u> ppm
Recovery Mud	<u>1.15</u> @ <u>65</u> °F.	<u>6,000</u> ppm
Recovery Mud Filtrate	<u>1.10</u> @ <u>68</u> °F.	<u>5,800</u> ppm
Mud Pit Sample	<u>.98</u> @ <u>76</u> °F.	<u>5,800</u> ppm
Mud Pit Sample Filtrate	<u>1.00</u> @ <u>80</u> °F.	<u>5,200</u> ppm

Sample Taken By ROGER D. FRIEDLY

Witness By Kim B. Shoemaker

Remarks Pit filtrate triton dish chlorides were 4,400 Ppm.
Recovery filtrate triton dish chlorides were 5,000 Ppm.

GENERAL INFORMATION

Client Information:

Company: L.D. DRILLING, INC.

Contact: L.D. DAVIS

Phone: 620-793-3051 Fax: e-mail:

Site Information:

Contact: KIM SHOEMAKER

Phone: 316-772-2627 Fax: e-mail:

Well Information:

Name: STECKEL FARMS # 2-11

Operator: L.D. DRILLING, INC.

Location-Downhole: DST #1 LKC "H-J" 3,553' - 3,610'

Location-Surface: SEC 11-22S-14W STAFFORD COUNTY

Test Information:

Company: DIAMOND TESTING

Representative: ROGEER D. FRIEDLY

Supervisor: KIM SHOEMAKER

Test Type: CONVENTIOAL Job Number:

Test Unit: NO. 1

Start Date: 2005/06/09 Start Time: 18:51:00

End Date: 2005/06/10 End Time: 01:28:00

Report Date: Prepared By:

Remarks: Qualified By:

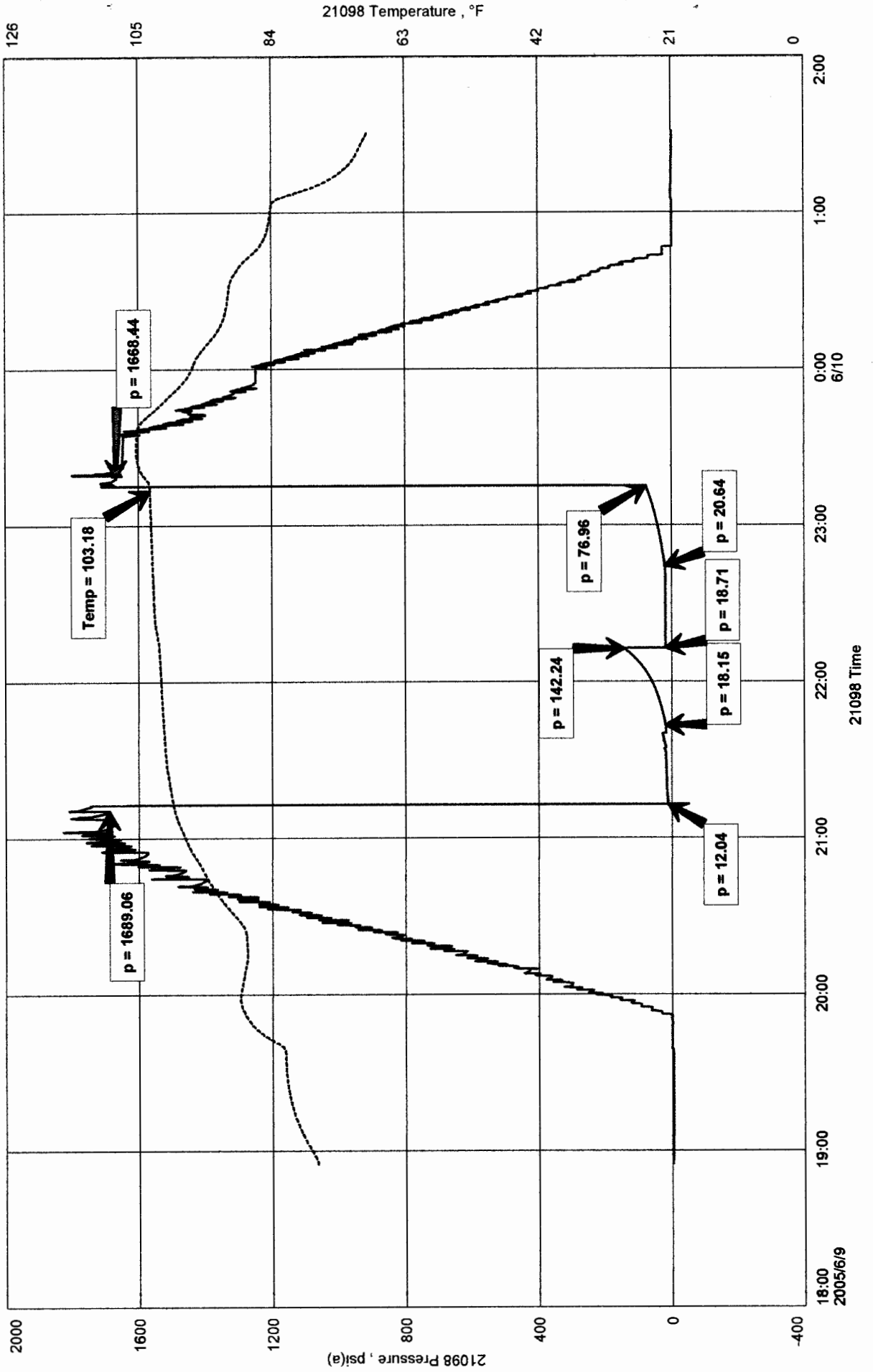
RECOVERED: 30' DRILLING MUD WITH A FEW OIL SPECKS

TOOL SAMPLE: 2% OIL, 98% MUD.

L.D. DRILLING, INC.
DST #1 LKC "H-J" 3,553' - 3,610'
Start Test Date: 2005/06/09
Final Test Date: 2005/06/10

STECKEL FARMS # 2-11
Formation: DST #1 LKC "H-I" 3,553' - 3,610'
Pool: WILDCAT

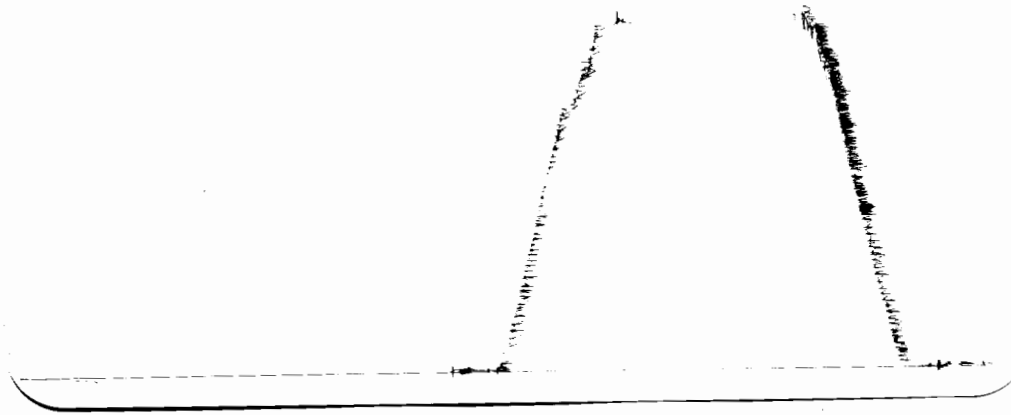
STECKEL FARMS # 2-11



RECEIVED

DST # 1 outside 13387
LKC H-J

3553-3610
Loc 3607



This is an actual photograph of recorder chart.

POINT	PRESSURE		PSI
	Field Reading	Elec. Office Reading	
(A) Initial Hydrostatic Mud	1689	1689	PSI
(B) First Initial Flow Pressure.....	12	12	PSI
(C) First Final Flow Pressure	18	18	PSI
(D) Initial Closed-in Pressure	142	142	PSI
(E) Second Initial Flow Pressure.....	19	19	PSI
(F) Second Final Flow Pressure.....	21	21	PSI
(G) Final Closed-in Pressure.....	77	77	PSI
(H) Final Hydrostatic Mud.....	1668	1668	PSI

RECEIVED

AUG 20 2005



DIAMOND TESTING
P.O. Box 157
HOISINGTON, KANSAS 67544
(620) 653-7550 • (800) 542-7313
STC 21098.D122

Company L. D. Drilling, Inc. Lease & Well No. Steckel Farms No. 2-11
Elevation 1936 KB Formation Lansing/Kansas City "K" Effective Pay -- Ft. Ticket No. 2011
Date 6-10-05 Sec. 11 Twp. 22S Range 14W County Stafford State Kansas
Test Approved By Kim B. Shoemaker Diamond Representative Roger D. Friedly

Formation Test No. 2 Interval Tested from 3,608 ft. to 3,635 ft. Total Depth 3,635 ft.
Packer Depth 3,603 ft. Size 6 3/4 in. Packer Depth -- ft. Size -- in.
Packer Depth 3,608 ft. Size 6 3/4 in. Packer Depth -- ft. Size -- in.
Depth of Selective Zone Set ft.

Top Recorder Depth (Inside) 3,596 ft. Recorder Number 21098 Cap. 5,000 psi
Bottom Recorder Depth (Outside) 3,632 ft. Recorder Number 13387 Cap. 4,000 psi
Below Straddle Recorder Depth ft. Recorder Number Cap. psi

Drilling Contractor Petromark Drilling, LLC - Rig 1 Drill Collar Length -- ft. I.D. -- in.
Mud Type Chemical Viscosity 49 Weight Pipe Length -- ft. I.D. -- in.
Weight 9.0 Water Loss 14.8 cc. Drill Pipe Length 3,583 ft. I.D. 3 1/2 in.
Chlorides 4,400 P.P.M. Test Tool Length 25 ft. Tool Size 3 1/2 - IF in.
Jars: Make Bowen Serial Number Not Run Anchor Length 27 ft. Size 4 1/2 - FH in.
Did Well Flow? No Reversed Out No Surface Choke Size 1 in. Bottom Choke Size 5/8 in.
Main Hole Size 7 7/8 in. Tool Joint Size 4 1/2 - XH in.

Blow:1st Open: Weak, 1/2 in., blow increasing. Off bottom of bucket in 11 1/2 mins. Good, 2 in., blow back during shut-in.
2nd Open: Weak, 1/2 in., blow increasing. Off bottom of bucket in 11 1/2 mins. Good, 3 in., blow back during shut-in.

Recovered 550 ft. of gas in pipe
Recovered 131 ft. of heavy gas & mud cut watery oil = 1.860200 bbls. (Grind out: 13%-gas; 15%-mud; 21%-water; 51%-oil)
Recovered 63 ft. of mud & gas cut watery oil = .894600 bbls. (Grind out: 19%-mud; 20%-gas; 29%-water; 32%-oil)
Recovered 63 ft. of gas & oil cut muddy water = .894600 bbls. (Grind out: 2%-gas; 5%-oil; 6%-mud; 87%-water)
Recovered 257 ft. of TOTAL FLUID = 3.649400 bbls.

Remarks Tool Sample Grind Out: BLEW OUT!

Time Set Packer(s) 11:32 A.M. Time Started Off Bottom 2:32 P.M. Maximum Temperature 109°
Initial Hydrostatic Pressure (A) 1730 P.S.I.
Initial Flow Period Minutes 30 (B) 15 P.S.I. to (C) 60 P.S.I.
Initial Closed In Period Minutes 45 (D) 685 P.S.I.
Final Flow Period Minutes 45 (E) 66 P.S.I. to (F) 107 P.S.I.
Final Closed In Period Minutes 60 (G) 656 P.S.I.
Final Hydrostatic Pressure (H) 1724 P.S.I.



DIAMOND TESTING
P. O. Box 157
HOISINGTON, KANSAS 67544
(800) 542-7313

FLUID SAMPLE DATA

Company L. D. Drilling, Inc.

Lease & Well No. Steckel Farms No. 2-11

Date 6-10-05 Sec. 11 Twp. 22 S Range 14 W

Formation Test No. 2 Interval Tested From 3,608 ft. to 3,635 ft. Total Depth 3,635 ft.

Formation Lansing/Kansas City "K"

	<u>MUD PIT</u>	<u>RECOVERY</u>	
Viscosity	<u>49</u> CP	<u>--</u> CP	
Weight	<u>9.0</u>	<u>--</u>	
Water Loss	<u>14.8</u> CC	<u>--</u> CC	
PH Factor	<u>10.0</u>	<u>--</u>	<u>Water</u> <u>7.0</u>

	<u>RESISTIVITY</u>	<u>CHLORIDE CONTENT</u>
Recovery Water	<u>.16</u> @ <u>62</u> °F.	<u>55,000</u> ppm
Recovery Mud	<u>--</u> @ <u>--</u> °F.	<u>--</u> ppm
Recovery Mud Filtrate	<u>--</u> @ <u>--</u> °F.	<u>--</u> ppm
Mud Pit Sample	<u>1.05</u> @ <u>70</u> °F.	<u>5,900</u> ppm
Mud Pit Sample Filtrate	<u>1.15</u> @ <u>74</u> °F.	<u>5,000</u> ppm

Sample Taken By ROGER D. FRIEDLY

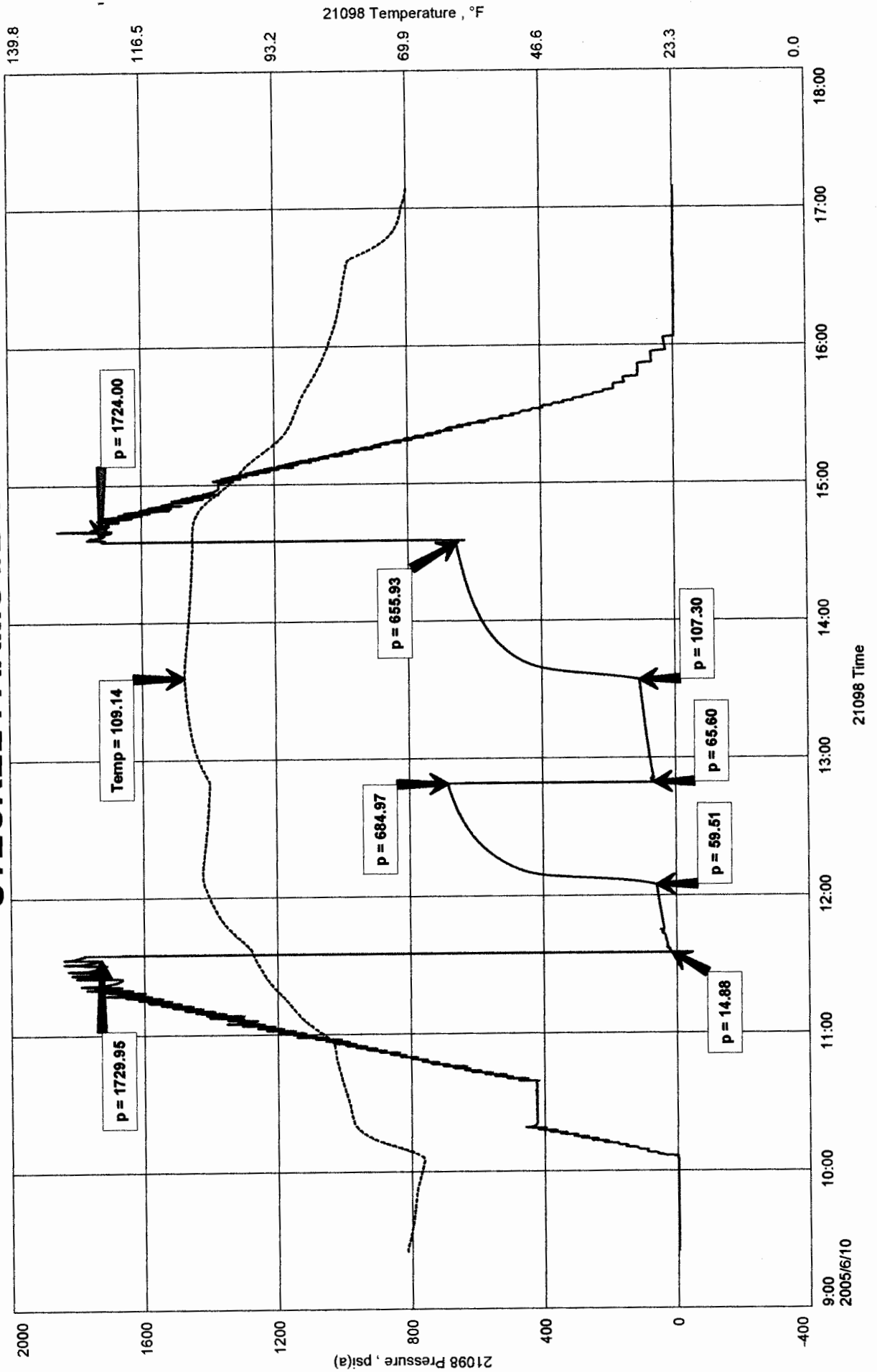
Witness By Kim B. Shoemaker

Remarks Pit filtrate triton dish chlorides were 4,400 Ppm.
Recovery water dish chlorides were 42,000 Ppm.

STECKEL FARMS #2-11
 Formation: DST #2 LKC 'K' 3,608' - 3,635'
 Pool: WILDCAT

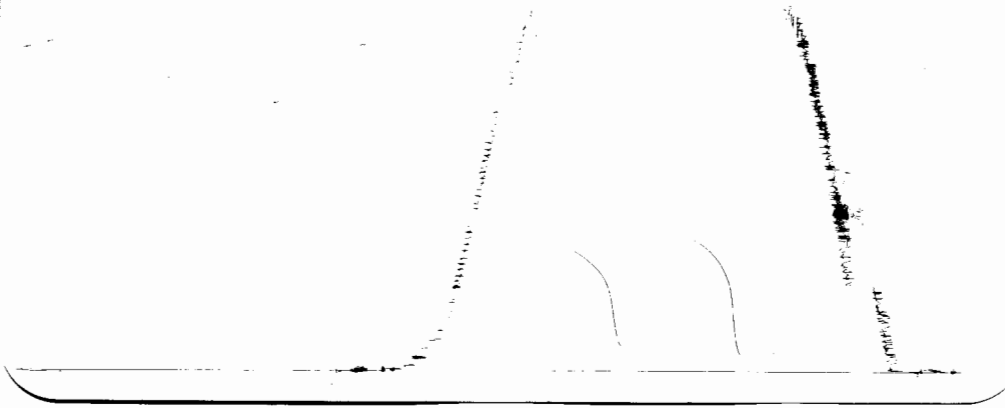
L.D. DRILLING, INC.
 DST #2 LKC 'K' 3,608' - 3,635'
 Start Test Date: 2005/06/10
 Final Test Date: 2005/06/10

STECKEL FARMS #2-11



DST # 2 outside 18387
LKC "K"

3608' - 3635'
LOC 3632



This is an actual photograph of recorder chart.

POINT	PRESSURE		PSI
	Field Reading	Elec. Office Reading	
(A) Initial Hydrostatic Mud	1730	1730	PSI
(B) First Initial Flow Pressure	15	15	PSI
(C) First Final Flow Pressure	60	60	PSI
(D) Initial Closed-in Pressure	685	685	PSI
(E) Second Initial Flow Pressure	66	66	PSI
(F) Second Final Flow Pressure	107	107	PSI
(G) Final Closed-in Pressure	656	656	PSI
(H) Final Hydrostatic Mud	1724	1724	PSI

RECEIVED



DIAMOND TESTING

P.O. Box 157
HOISINGTON, KANSAS 67544
(620) 653-7550 • (800) 542-7313
STC 21098.D123

Company L. D. Drilling, Inc. Lease & Well No. Steckel Farms No. 2-11

Elevation 1936 KB Formation Lansing/Kansas City "L"/Viola Effective Pay -- Ft. Ticket No. 2012

Date 6-11-05 Sec. 11 Twp. 22S Range 14W County Stafford State Kansas

Test Approved By Kim B. Shoemaker Diamond Representative Roger D. Friedly

Formation Test No. 3 Interval Tested from 3,638 ft. to 3,720 ft. Total Depth 3,720 ft.

Packer Depth 3,633 ft. Size 6 3/4 in. Packer Depth -- ft. Size -- in.

Packer Depth 3,638 ft. Size 6 3/4 in. Packer Depth -- ft. Size -- in.

Depth of Selective Zone Set ft.

Top Recorder Depth (Inside) 3,626 ft. Recorder Number 21098 Cap. 5,000 psi

Bottom Recorder Depth (Outside) 3,717 ft. Recorder Number 13387 Cap. 4,000 psi

Below Straddle Recorder Depth ft. Recorder Number Cap. psi

Drilling Contractor Petromark Drilling, LLC - Rig 1 Drill Collar Length -- ft. I.D. -- in.

Mud Type Chemical Viscosity 44 Weight Pipe Length -- ft. I.D. -- in.

Weight 9.1 Water Loss 20.0 cc. Drill Pipe Length 3,613 ft. I.D. 3 1/2 in.

Chlorides 9,000 P.P.M. Test Tool Length 25 ft. Tool Size 3 1/2 - IF in.

Jars: Make Bowen Serial Number Not Run Anchor Length 19' perf. w/63' drill pipe Size 4 1/2 - FH in.

Did Well Flow? No Reversed Out No Surface Choke Size 1 in. Bottom Choke Size 5/8 in.

Main Hole Size 7 7/8 in. Tool Joint Size 4 1/2 - XH in.

Blow: 1st Open: Weak, 1/8 in., blow increasing to 4 ins. No blow back during shut-in.

2nd Open: Fair, 2 in., blow increasing to 9 ins. No blow back during shut-in.

Recovered 144 ft. of gas in pipe

Recovered 45 ft. of slightly watery & gas cut oily mud = .639000 bbls. (Grind out: 2%-water; 20%-gas; 27%-oil; 51%-mud)

Recovered 45 ft. of TOTAL FLUID = .639000 bbls.

Recovered ft. of

Recovered ft. of

Remarks Tool Sample Grind Out: 2%-gas; 8%-water; 38%-mud; 52%-oil

Time Set Packer(s) 7:51 ~~P.M.~~ A.M. Time Started Off Bottom 10:36 ~~P.M.~~ A.M. Maximum Temperature 102°

Initial Hydrostatic Pressure (A) 1770 P.S.I.

Initial Flow Period Minutes 30 (B) 9 P.S.I. to (C) 14 P.S.I.

Initial Closed In Period Minutes 30 (D) 143 P.S.I.

Final Flow Period Minutes 45 (E) 14 P.S.I. to (F) 21 P.S.I.

Final Closed In Period Minutes 60 (G) 651 P.S.I.

Final Hydrostatic Pressure (H) 1732 P.S.I.



DIAMOND TESTING
P. O. Box 157
HOISINGTON, KANSAS 67544
(800) 542-7313

FLUID SAMPLE DATA

Company L. D. Drilling, Inc.

Lease & Well No. Steckel Farms No. 2-11

Date 6-11-05 Sec. 11 Twp. 22 S Range 14 W

Formation Test No. 3 Interval Tested From 3,638 ft. to 3,720 ft. Total Depth 3,720 ft.

Formation Lansing/Kansas City "L"/Viola

	<u>MUD PIT</u>	<u>RECOVERY</u>
Viscosity	<u>44</u> CP	<u>--</u> CP
Weight	<u>9.1</u>	<u>--</u>
Water Loss	<u>20.0</u> CC	<u>--</u> CC
PH Factor	<u>10.0</u>	<u>--</u>

	<u>RESISTIVITY</u>	<u>CHLORIDE CONTENT</u>
Recovery Water	<u>-- @ -- °F.</u>	<u>-- ppm</u>
Recovery Mud	<u>-- @ -- °F.</u>	<u>-- ppm</u>
Recovery Mud Filtrate	<u>-- @ -- °F.</u>	<u>-- ppm</u>
Mud Pit Sample	<u>.54 @ 80 °F.</u>	<u>11,000 ppm</u>
Mud Pit Sample Filtrate	<u>.57 @ 81 °F.</u>	<u>10,000 ppm</u>

Sample Taken By ROGER D. FRIEDLY

Witness By Kim B. Shoemaker

Remarks Pit filtrate triton dish chlorides were 9,000 Ppm.

GENERAL INFORMATION

Client Information:

Company: L.D. DRILLING, INC.

Contact: L.D. DAVIS

Phone: Fax: e-mail:

Site Information:

Contact: KIM SHOEMAKER

Phone: Fax: e-mail:

Well Information:

Name: STECKEL FARMS #2-11

Operator: L.D. DRILLING, INC.

Location-Downhole: DST #3 LKC 'L' / VIOLA 3,638' - 3,720'

Location-Surface: SEC 11-22S-14W STAFFORD COUNTY

Test Information:

Company: DIAMOND TESTING

Representative: ROGER D. FRIEDLY

Supervisor: KIM SHOEMAKER

Test Type: CONVENTIONAL Job Number:

Test Unit: NO. 1

Start Date: 2005/06/11 Start Time: 05:39:00

End Date: 2005/06/11 End Time: 12:26:00

Report Date: Prepared By:

Remarks: Qualified By:

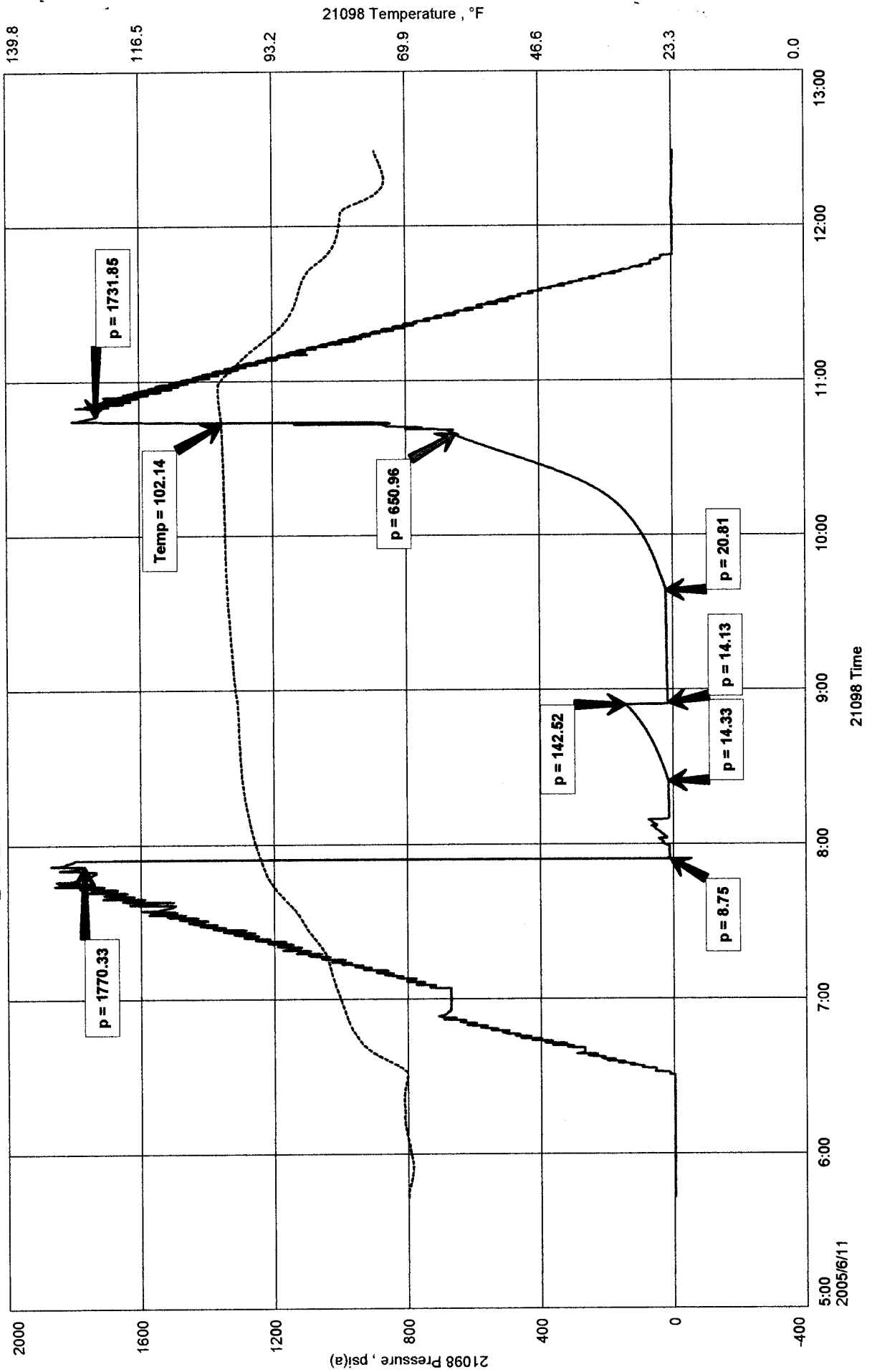
RECOVERED: 144' GAS IN PIPE
45' SLT WTR & GCOM 2% WTR, 20% GAS, 27% OIL, 51% MUD

TOOL SAMPLE: 2% GAS, 8% WTR, 38% MUD, 52% OIL

L.D. DRILLING, INC.
DST #3 LKC 'L' / VIOLA 3,638' - 3,720'
Start Test Date: 2005/06/11
Final Test Date: 2005/06/11

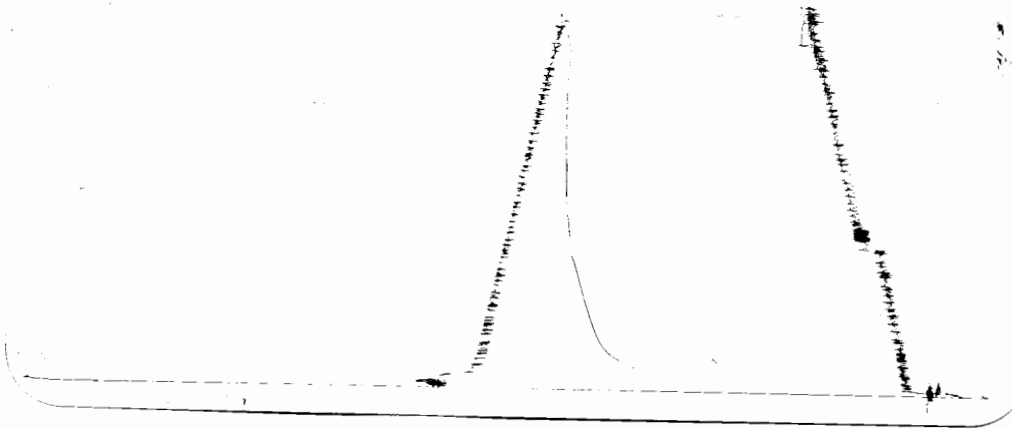
STECKEL FARMS #2-11
Formation: DST #3 LKC 'L' / VIOLA 3,638' - 3,720'
Pool: WILDCAT

STECKEL FARMS #2-11



DST # 3 Outside 13387
 LKc L/viola

3636-3720
 LOC 3717



This is an actual photograph of recorder chart.

POINT	PRESSURE		
	Field Reading	Elec. Office Reading	
(A) Initial Hydrostatic Mud	1770	1770	PSI
(B) First Initial Flow Pressure.....	9	9	PSI
(C) First Final Flow Pressure	14	14	PSI
(D) Initial Closed-in Pressure	143	143	PSI
(E) Second Initial Flow Pressure	14	14	PSI
(F) Second Final Flow Pressure.....	21	21	PSI
(G) Final Closed-in Pressure.....	651	651	PSI
(H) Final Hydrostatic Mud.....	1732	1732	PSI

RECEIVED

COMPANY L. H. WILLIAMS, INC. LEASE AND WELL NO. 3636-3720 SEC. 11 TWP. 42S RGE. 44W TEST NO. 2 DATE 11/15/55