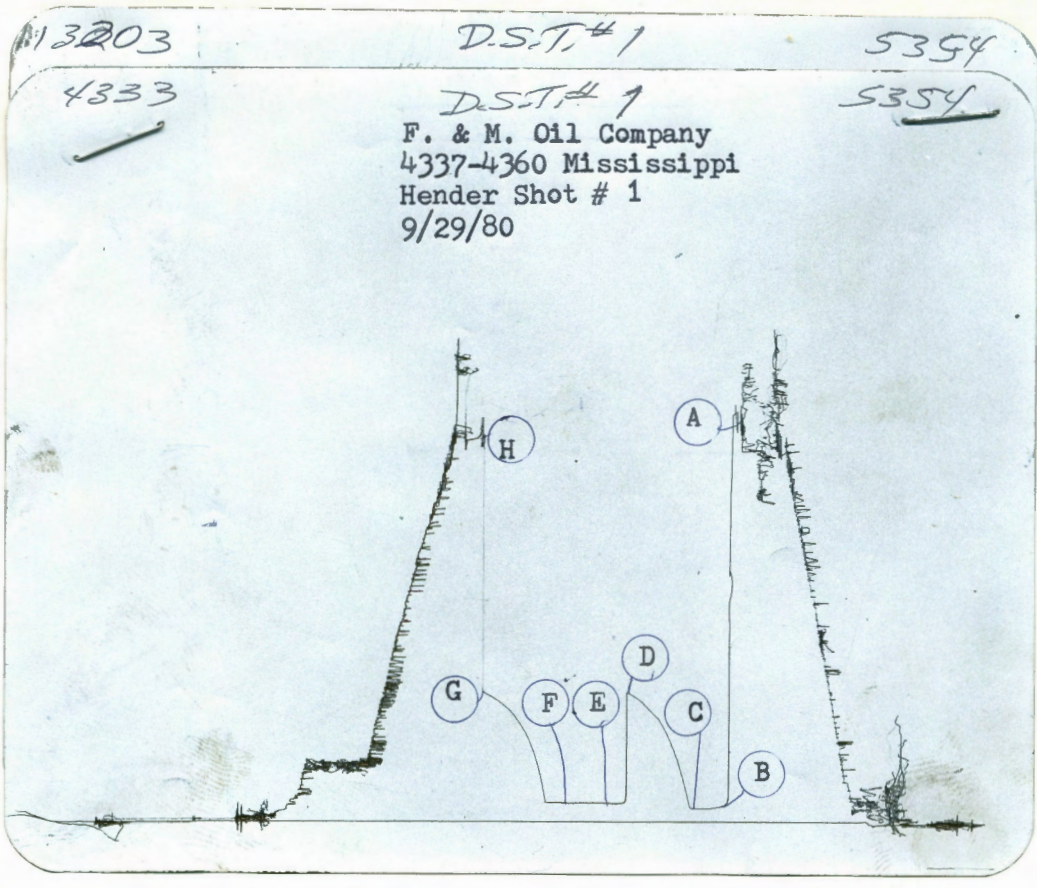


SUPERIOR TESTERS
433 SOUTH WESTVIEW • DERBY, KANSAS

COMPANY F. & M. Oil Company STATE Kansas COUNTY Pawnee
LEASE & WELL NO. Hendershot # 1 ELEVATION 2174 KB. DATE 9/29/80 FORMATION TESTED Mississippi
SEC 4 TWP 22 RANGE 20 INTERVAL TESTED 4337 TO 4360 TOTAL DEPTH 4360
TEST NO # 1 O.K. yes TOP PACKER DEPTH 4332 FT. BOTTOM PACKER DEPTH 4337 FT. PACKER SIZE 6 3/4
STRADDLE no CONV yes TOOL SIZE 5 1/2 OD. TOOL JOINT SIZE 4 1/2 FH. ANCHOR LENGTH 30 FT.
HOLE SIZE 7 7/8 EXTRA EQUIPMENT none SURFACE CHOKE SIZE 1/2 IN. BOTTOM CHOKE SIZE 1/2 IN.
REVERSED OUT no VISCOSITY 50 WEIGHT 9.9 DUAL PACKERS yes DID PACKER HOLD yes DID TOOL PLUG no
WHERE? _____ DRILLING CONTRACTOR Big Springs # 1
TOOL JOINT SIZE 4 1/2 FH. IN. LENGTH DRILL PIPE 3948 FT. I.D. DRILL PIPE 3.80 IN.
TOOL JOINT SIZE 4 1/2 FH. IN. LENGTH WEIGHT PIPE 391 FT. I.D. WEIGHT PIPE 2.75 IN.
TOOL JOINT SIZE _____ IN. LENGTH DRILL COLLARS _____ FT. I.D. DRILL COLLARS _____ IN.
TOOL OPEN I.F.P. FROM 10:00 a.m. to 10:30 a.m. Hr. 30 min From (B) 66 P.S.I. to (C) 77 P.S.I.
TOOL CLOSED I.C.I.P. FROM 10:30 a.m. to 11:15 a.m. Hr. 45 min (D) 797 P.S.I.
TOOL OPEN F.F.P. FROM 11:15 a.m. to 12:15 a.m. Hr. 60 min From (E) 88 P.S.I. to (F) 99 P.S.I.
TOOL CLOSED F.C.I.P. FROM 12:15 a.m. to 1:00 a.m. Hr. 45 min (G) 797 P.S.I.
INITIAL HYDROSTATIC PRESSURE (A) 2354 P.S.I. FINAL HYDROSTATIC PRESSURE (H) 2332 MAXIMUM TEMPERATURE 124 F.
BLOW Strong.

RECOVERY - TOTAL FEET 200 ft.
RECOVERED 200 FEET OF Gas cut watery mud.
RECOVERED _____ FEET OF Chlorides 43,000 on water mud.
RECOVERED _____ FEET OF Chlorides 40,000 Drilling Mud.
RECOVERED _____ FEET OF _____
RECOVERED _____ FEET OF _____
RECOVERED _____ FEET OF _____
RECOVERED _____ FEET OF _____
RECOVERED _____ FEET OF _____
RECOVERED _____ FEET OF _____
RECOVERED _____ FEET OF _____
RECOVERED _____ FEET OF _____
RECOVERED _____ FEET OF _____
RECOVERED _____ FEET OF _____
RECOVERED _____ FEET OF _____
RECOVERED _____ FEET OF _____
REMARKS None.

WITNESSED BY: Bob Jenkins TOOL OPERATOR: R. E. Budig TICKET NO. 5354



This is an actual photograph of recorder chart.

POINT	PRESSURE		
	FIELD READING	OFFICE READING	
(A) Initial Hydrostatic Mud	<u>2354</u>	<u>2364</u>	P.S.I.
(B) First Initial Flow Pressure	<u>66</u>	<u>66</u>	P.S.I.
(C) First Final Flow Pressure	<u>77</u>	<u>77</u>	P.S.I.
(D) Initial Closed-in Pressure	<u>797</u>	<u>797</u>	P.S.I.
(E) Second Initial Flow Pressure	<u>88</u>	<u>88</u>	P.S.I.
(F) Second Final Flow Pressure	<u>99</u>	<u>99</u>	P.S.I.
(G) Final Closed-in Pressure	<u>797</u>	<u>797</u>	P.S.I.
(H) Final Hydrostatic Mud	<u>2332</u>	<u>2324</u>	P.S.I.

SUPERIOR TESTERS

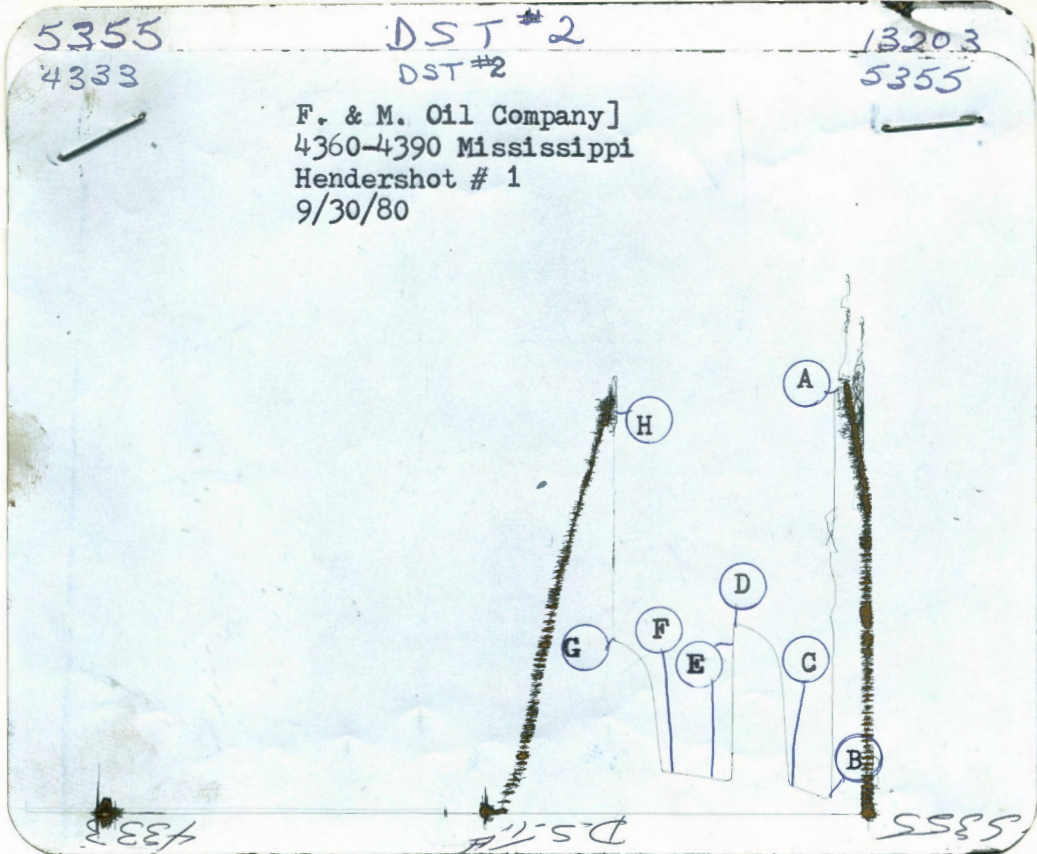
433 SOUTH WESTVIEW • DERBY, KANSAS

COMPANY F. & M. Oil Company STATE Kansas COUNTY Pawnee
LEASE & WELL NO. Hendershot # 1 ELEVATION 2174 KB. DATE 9/30/80 FORMATION TESTED Mississippi
SEC 4 TWP 22 RANGE 20 INTERVAL TESTED 4360 TO 4390 TOTAL DEPTH 4390
TEST NO. # 2 O.K. yes TOP PACKER DEPTH 4355 FT. BOTTOM PACKER DEPTH 4360 FT. PACKER SIZE 6 3/4
STRADDLE no CONV. yes TOOL SIZE 5 1/2 OD. TOOL JOINT SIZE 4 1/2 FH. ANCHOR LENGTH 30 FT.
HOLE SIZE 7 7/8 EXTRA EQUIPMENT none SURFACE CHOKE SIZE 1/2 IN. BOTTOM CHOKE SIZE 1/2 IN.
REVERSED OUT no VISCOSITY 50 WEIGHT 9.9 DUAL PACKERS yes DID PACKER HOLD yes DID TOOL PLUG no
WHERE? ----- DRILLING CONTRACTOR Big Springs # 1
TOOL JOINT SIZE 4 1/2 FH. IN. LENGTH DRILL PIPE 3948 FT. I.D. DRILL PIPE 3.80 IN.
TOOL JOINT SIZE 4 1/2 FH. IN. LENGTH WEIGHT PIPE 391 FT. I.D. WEIGHT PIPE 2.75 IN.
TOOL JOINT SIZE ----- IN. LENGTH DRILL COLLARS ----- FT. I.D. DRILL COLLARS ----- IN.
TOOL OPEN I.F.P. FROM 10:00 a. m to 10:30 a. m Hr. 30 min From (B) 77 P.S.I. to (C) 165 P.S.I.
TOOL CLOSED I.C.I.P. FROM 10:30 a. m to 11:15 a. m Hr. 45 min (D) 1108 P.S.I.
TOOL OPEN F.F.P. FROM 11:15 a. m to 12:15 a. m Hr. 60 min From (E) 188 P.S.I. to (F) 243 P.S.I.
TOOL CLOSED F.C.I.P. FROM 12:15 a. m to 1:00 p. m Hr. 45 min (G) 997 P.S.I.
INITIAL HYDROSTATIC PRESSURE (A) 2488 P.S.I. FINAL HYDROSTATIC PRESSURE (H) 2466 MAXIMUM TEMPERATURE 125 F.
BLOW Good blow through-out test.

RECOVERY - TOTAL FEET 475 ft.
RECOVERED 475 FEET OF Muddy water.
RECOVERED _____ FEET OF _____
RECOVERED _____ FEET OF _____
RECOVERED _____ FEET OF _____
RECOVERED _____ FEET OF _____
RECOVERED _____ FEET OF _____
RECOVERED _____ FEET OF _____
RECOVERED _____ FEET OF _____
RECOVERED _____ FEET OF _____
RECOVERED _____ FEET OF _____
RECOVERED _____ FEET OF _____
RECOVERED _____ FEET OF _____
RECOVERED _____ FEET OF _____
RECOVERED _____ FEET OF _____
RECOVERED _____ FEET OF _____

REMARKS None.

TICKET NO. 5355
WITNESSED BY: Bob Jenkins TOOL OPERATOR: R. E. Budig



This is an actual photograph of recorder chart.

POINT	PRESSURE		P.S.I.
	FIELD READING	OFFICE READING	
(A) Initial Hydrostatic Mud	2488	2497	P.S.I.
(B) First Initial Flow Pressure	77	77	P.S.I.
(C) First Final Flow Pressure	165	165	P.S.I.
(D) Initial Closed-in Pressure	1108	1108	P.S.I.
(E) Second Initial Flow Pressure	188	188	P.S.I.
(F) Second Final Flow Pressure	243	243	P.S.I.
(G) Final Closed-in Pressure	997	988	P.S.I.
(H) Final Hydrostatic Mud	2466	2466	P.S.I.