

RELEASED

APR 26 2000

CONFIDENTIAL

ORIGINAL

FROM CONFIDENTIAL

Daily Operations Report

15-083-21477-0100

DATE: AUGUST 26 97
DAY: 1
WELL NAME: MAXX BILLINGS HZ #1
LOCATION: SEC 25 T22S R 23W
TOTAL DEPTH: 6856' PBTD: 6856'
FORMATION: OSAGE
PERFORATIONS: OPEN HOLE 4812' - 6856'
TYPE OF JOB: NEW WELL COMPLETION
PRESENT ACTIVITY: SWABBING
RIG TIME: 14 TOTAL 14
SUPERVISOR: RON ZUTZ/ RON STRADER
PHONE: 403-350-1081

<u>DAILY COST SUMMARY</u>	
<u>AFE#:</u>	
<u>AMOUNT:</u>	
<u>TYPE OF SERVICE</u>	<u>AMOUNT</u>
SUPERVISION ZUTZ	400
SUPERVISION STRADER	400
SERVICE RIG EXPRESS	1700
TRUCKING GABEL	250
TRUCKING CHEYENNE	250
TRUCKING WAGNER	400
DAILY COST: 3400	
PREVIOUS COST: 0	
CUMMULATIVE COST: 3400	

NOV 20
 NOV 20
 CONFIDENTIAL

OPERATION:

MOVED IN AND RIGGED UP SERVICE RIG. FOUND WELL DEAD. REMOVED WELLHEAD AND INSTALLED BOPS. HAULED IN 165 JOINTS 2 7/8" TUBING AND 33 JOINTS 2 3/8" TUBING. RAN IN WITH TUBING AS FOLLOWS:

2 - JOINTS 2 3/8" TUBING	62.74'	5642.72' KB
1 - 4 1/2" GUIBERSON UNI 6 PACKER	8.35'	5580.01' KB
1 - 2 3/8" TUBING PUP	4.13'	
31 - JOINTS 2 3/8" TUBING	965.09'	
145 - JOINTS 2 7/8" TUBING	4595.44'	
RIG KB	7.00'	

TUBING END AT 5642.72'

RECEIVED
KANSAS CORPORATION COMMISSION

NOV 20 1997

CONSERVATION DIVISION
MCHETA, KS

HAD NO TROUBLE ENTERING LINER. RAN IN AND SET PACKER WITH 10000 # COMPRESSION AND TENSION. SET TUBING IN SLIPS WITH 10000 COMPRESSION ON PACKER. CLOSED IN PIPE RAMS AND RIGGED UP TO SWAB. RAN IN AND TAGGED INTIAL FLUID LEVEL AT 700'. PULLED 13 SWABS AND RECOVERED 81.43 BBLs FLUID. 59.13 BBLs OIL AND 21.65 BBLs WATER. RECOVERED CALCULATED TUBULAR VOLUME OF OIL AND WELL STARTED TO CUT WATER. NO STABILIZED WATER CUT. WATER IS FRESH. SWABBING FLUID LEVEL 1300'. HANGING UP ON SMALL PIECES OF MAGNESIUM FROM CASING SHOE GETTING STUCK WITH SWAB CUPS. RECOVERED 7 PIECES SO FAR. CASING IS GOING ON SLIGHT VACUUM WHILE PULLING SWABS. WILL SHOOT STATIC FLUID LEVEL ON CASING IN AM AND AGAIN AFTER SWABBING TO DETERMINE IF COMUNICATION EXISTS BETWEEN TOE AND ANNULUS.

CONFIDENTIAL

ORIGINAL

Daily Operations Report

15-083-21447-0100

DATE: AUGUST 27 97
DAY: 2
WELL NAME: MAXX BILLINGS HZ #1
LOCATION: SEC 25 T22S R 23W
TOTAL DEPTH: 6856' PBD: 6856'
FORMATION: OSAGE
PERFORATIONS: OPEN HOLE 4812' - 6856'
TYPE OF JOB: NEW WELL COMPLETION
PRESENT ACTIVITY: SWABBING
RIG TIME: 12 TOTAL 26
SUPERVISOR: RON ZUTZ/ RON SCHRADER
PHONE: 403-350-1081

<u>DAILY COST SUMMARY</u>	
<u>TYPE OF SERVICE</u>	<u>AMOUNT</u>
SUPERVISION ZUTZ	400
SUPERVISION STRADER	400
SERVICE RIG EXPRESS	1700
TRUCKING GABEL	100
TANK TRUCK SCHWIN	400
GUIBERSON	1200
DAILY COST:	4200
PREVIOUS COST:	3400
CUMMULATIVE COST:	7600

RELEASED

APR 26 2000

OPERATION: FROM CONFIDENTIAL

FOUND WELL WITH TUBING PRESSURE TSTM. SHOT FLUID LEVEL ON CASING AT 25 JOINTS APPROX. 775'. RIGGED UP TO SWAB. RAN IN AND TAGGED INITIAL FLUID LEVEL AT 1150'. PULLED 57 SWABS AND RECOVERED 350.8 BBLS OF FLUID IN 9 HOURS OF SWABBING. AVERAGE WITHDRAWL RATE 39 BBLS/HOUR. SWABBING FLUID LEVEL 1500'. RECOVERED 38.46 BBLS OIL AND 312.34 BBLS WATER. AVERAGE CUT 11%. CUTS PER SWAB VARIED THRU OUT DAY. (SEE SWAB REPORT) CONTINUED HAVING SOME TROUBLE WITH BITS OF MAGNESSIUM HANGING UP SWAB CUPS TILL ABOUT NOON THEN NO MORE TROUBLE. TOOK SAMPLE OF WATER TO CHEMICAL LAB AND FOUND SALINITY ABOUT 5000 - 10000 PPM CHLORIDES. NORMAL MISSISSPPI WATER 20000 -30000 PPM. WATER IS ESSENTIALLY FRESH MUD FILTRATE WATER. SHOT SECOND FLUID LEVEL ON ANNULUS AT 10 AM AND FOUND FLUID LEVEL AT 24 JOINTS, 744'. PACKER IS HOLDING GOOD AND ECP IS HOLDING GOOD. SECURED WELL AND SDFN.

NOV 20
 CONFIDENTIAL

RECEIVED
 KANSAS CORPORATION COMMISSION

NOV 20 1997

CONSERVATION DIVISION
 WICHITA, KS

RELEASED

APR 26 2000

CONFIDENTIAL

ORIGINAL

FROM CONFIDENTIAL

DATE
AUGUST 27 97

DAY
2.00

LOCATION
SEC 25 T22S R23W

DATE

DAY

LOCATION

SWAB REPORT

KANSAS CORPORATION COMMISSION

NOV 20 1997

CONSERVATION DIVISION
WICHITA, KS

WELL NAME
MAXX BILLINGS HZ #1

SERVICE RIG
EXPRESS #4

FLUID TO RECOVER

SWAB NO.	FLUID LEVEL	SWAB DEPTH	RECOVER THIS RUN	CUMM BBS	OIL CUT %	BBS OIL		BBS WATER	
						RECOVER THIS RUN	CUMM.	RECOVER THIS RUN	CUMM.
1	1150	2250	6.68	6.68	63	4.21	4.21	2.47	2.47
2	1300	2400	6.68	13.36	0	0.00	4.21	6.68	9.15
3	1300	2400	7.51	20.87	0	0.00	4.21	7.51	16.66
4	1300	2400	6.26	27.13	1	0.06	4.27	8.20	22.86
5	1300	2400	7.10	34.23	1	0.07	4.34	7.03	29.89
6	1250	2350	5.83	40.06	1	0.08	4.40	5.77	35.66
7	1300	2400	2.91	42.97	3	0.09	4.49	2.82	38.48
8	1300	2400	7.10	50.07	25	1.78	6.26	5.33	43.81
9	1300	2400	4.58	54.65	18	0.82	7.09	3.78	47.56
10	1300	2400	5.83	60.48	15	0.87	7.96	4.96	52.52
11	1350	2450	7.10	67.58	3	0.21	8.17	6.89	59.41
12	1350	2450	3.34	70.92	13	0.43	8.61	2.91	62.31
13	1350	2450	5.83	76.75	11	0.64	9.25	5.19	67.50
14	1350	2450	0.00	76.75	0	0.00	9.25	0.00	67.50
15	1350	2450	6.68	83.43	13	0.87	10.12	5.81	73.31
16	1350	2450	5.83	89.26	16	0.93	11.05	4.90	78.21
17	1400	2500	5.83	95.09	11	0.84	11.69	5.19	83.40
18	1400	2500	6.68	101.77	4	0.27	11.96	6.41	89.81
19	1400	2500	5.83	107.60	14	0.82	12.78	5.01	94.82
20	1300	2400	7.51	115.11	23	1.73	14.50	5.78	100.61
21	1300	2400	7.51	122.62	16	1.20	15.70	6.31	106.92
22	1300	2400	7.51	130.13	16	1.20	16.91	6.31	113.22
23	1350	2450	5.42	135.55	6	0.33	17.23	5.09	118.32
24	1400	2500	7.10	142.65	6	0.43	17.66	6.67	124.99
25	1400	2500	6.26	148.91	5	0.31	17.97	5.95	130.94

CONFIDENTIAL

NOV 20

P02

08/27/97 17:42

RON_ZUTZ

403 346 7540

SWAB REPORT

RELEASED
AUG 26 2000

FROM CONFIDENTIAL

DATE

AUGUST 27 97

DAY

2.00

LOCATION

SEC 25 T22S R23W

MAXX BILLINGS HZ #1

EXPRESS #4

WELL NAME

SERVICE RIG

FLUID TO RECOVER

RECEIVED
KANSAS CORPORATION COMMISSION

NOV 20 1997

CONSERVATION DIVISION
WICHITA KS

CONFIDENTIAL

ORIGINAL

SWAB NO.	FLUID LEVEL	SWAB DEPTH	RECOVER THIS RUN	CUMM BBL	OIL CUT %	BBL OIL RECOVER THIS RUN	BBL OIL CUMM.	BBL WATER RECOVER THIS RUN	BBL WATER CUMM.
26	1400	2500	5.00	153.91	9	0.45	18.42	4.55	135.49
27	1400	2500	4.58	158.49	7	0.32	18.74	4.26	139.75
28	1400	2500	6.68	165.17	16	1.07	19.81	5.61	145.36
29	1450	2550	5.83	171.00	12	0.70	20.51	5.13	150.49
30	1450	2550	6.26	177.26	8	0.50	21.01	5.76	156.25
31	1450	2550	5.00	182.26	5	0.25	21.26	4.75	161.00
32	1450	2550	6.26	188.52	9	0.56	21.82	5.70	166.70
33	1450	2550	6.68	195.20	12	0.80	22.63	5.88	172.57
34	1450	2550	6.26	201.46	7	0.44	23.06	5.82	178.40
35	1450	2550	5.83	207.29	7	0.41	23.47	5.42	183.82
36	1450	2550	5.83	213.12	10	0.58	24.05	5.25	189.07
37	1450	2550	6.68	219.80	10	0.67	24.72	6.01	195.08
38	1450	2550	6.26	226.06	10	0.63	25.35	5.63	200.71
39	1450	2550	6.26	232.32	10	0.63	25.97	5.63	206.35
40	1450	2550	7.10	239.42	7	0.50	26.47	6.60	212.95
41	1450	2550	6.26	245.68	10	0.63	27.10	5.63	218.58
42	1350	2450	7.51	253.19	10	0.75	27.85	6.78	225.34
43	1450	2550	7.10	260.29	13	0.92	28.77	6.18	231.52
44	1500	2600	5.83	266.12	5	0.29	29.06	5.54	237.06
45	1500	2600	5.83	271.95	5	0.29	29.35	5.54	242.60
46	1500	2600	7.10	279.05	7	0.50	29.85	6.60	249.20
47	1500	2600	5.83	284.88	9	0.52	30.38	5.31	254.50
48	1500	2600	7.10	291.98	13	0.92	31.30	6.18	260.68
49	1500	2600	6.26	298.24	15	0.94	32.24	5.32	266.00
50	1500	2600	7.10	305.34	17	1.21	33.45	5.89	271.89

RELEASED

APR 26 2000

FROM CONFIDENTIAL

SWAB REPORT

DATE AUGUST 27 97
 DAY 2.00
 LOCATION SEC 25 T2S R23W

WELL NAME MAXX BILLINGS HZ #1
 SERVICE RIG EXPRESS #4
 FLUID TO RECOVER _____

SWAB NO.	FLUID LEVEL	SWAB DEPTH	RECOVER		OIL CUT %	BBLS OIL		BBLS WATER	
			THIS RUN	BBL		RECOVER THIS RUN	CUMM.	RECOVER THIS RUN	CUMM.
51	1500	2600	5.83	311.17	15	0.87	34.32	4.98	276.85
52	1500	2600	6.26	317.43	15	0.94	35.26	5.32	282.17
53	1500	2600	6.26	323.69	9	0.56	35.82	5.70	287.87
54	1500	2600	7.92	331.61	8	0.63	36.46	7.29	295.15
55	1500	2600	5.83	337.44	8	0.47	36.92	5.36	300.52
56	1450	2550	6.68	344.12	11	0.73	37.86	5.95	306.46
57	1500	2600	6.68	350.80	12	0.80	38.46	5.88	312.34

ORIGINAL

CONFIDENTIAL

NOV 20
 CONFIDENTIAL

RECEIVED
 KANSAS CORPORATION COMMISSION

NOV 20 1997

CONSERVATION DIVISION
 WICHITA, KS

RELEASED

ORIGINAL

APR 26 2000

Daily Operations Report

CONFIDENTIAL

FROM CONFIDENTIAL

DATE: AUGUST 28 97
DAY: 3
WELL NAME: MAXX BILLINGS HZ #1
LOCATION: SEC 25 T22S R 23W
TOTAL DEPTH: 6856' **PBTD:** 6856'
FORMATION: OSAGE
PERFORATIONS: OPEN HOLE 4812' - 6856'
TYPE OF JOB: NEW WELL COMPLETION
PRESENT ACTIVITY: SWABBING
RIG TIME: 13 **TOTAL 39**
SUPERVISOR: RON ZUTZ/ RON SCHRAEDER
PHONE: 403-350-1081

<u>DAILY COST SUMMARY</u>	
<u>AFE#:</u>	
<u>AMOUNT:</u>	
<u>TYPE OF SERVICE</u>	<u>AMOUNT</u>
SUPERVISION ZUTZ	400
SUPERVISION STRADER	400
SERVICE RIG EXPRESS	1600
TRUCKING GABEL	
TANK TRUCK SCHWIN	300
<hr/>	
DAILY COST:	2700
PREVIOUS COST:	7600
CUMMULATIVE COST:	10300

OPERATION:

FOUND WELL WITH TUBING PRESSURE TSTM. RIGGED UP TO SWAB. RAN IN AND TAGGED INITIAL FLUID LEVEL 1250'. PULLED 60 SWABS AND RECOVERED 398.2 BBLs FLUID IN 9.5 HOURS OF SWABBING. AVERAGE PRODUCTION RATE 42 BBLs/HOUR. RECOVERED 34.33 BBLs OIL AND 363.87 BBLs OF WATER. AVERAGE CUT 8.6%. CUMMULATIVE OIL RECOVERED 132.57 BBLs. CUMMULATIVE WATER RECOVERED 697.86 BBLs. TOOK WATER SAMPLE AT END OF DAY AND ANALYSED FOR CHLORIDES SALT CONTENT 15000 PPM. SWABBING FLUID LEVEL 1550'. SECURED WELL AND SDFN.

NOV

NOV 20

CONFIDENTIAL

RECEIVED
KANSAS CORPORATION COMMISSION

NOV 20 1997

CONSERVATION DIVISION
WICHITA KS

RELEASED

APR 26 2000

FROM CONFIDENTIAL

AUGUST 28 97

3.00

SEC 25 T22S R23W

DATE

DAY

LOCATION

RECEIVED

KANSAS CORPORATION COMMISSION

NOV 20 1997

CONSERVATION DIVISION
WICHITA KS

SWAB REPORT

NOV

NOV 20

CONFIDENTIAL

WELL NAME MAXX BILLINGS HZ #1

SERVICE RIG EXPRESS #4

FLUID TO RECOVER _____

CONFIDENTIAL

ORIGINAL

SWAB NO.	FLUID LEVEL	SWAB DEPTH	RECOVER THIS RUN	CUMM BBS	OIL CUT %	BBS OIL		BBS WATER	
						RECOVER THIS RUN	CUMM.	RECOVER THIS RUN	CUMM.
1	1250	2350	6.26	6.26	33	2.07	2.07	4.19	4.19
2	1350	2450	6.26	12.52	1	0.06	2.13	6.20	10.39
3	1350	2450	7.10	19.62	1	0.07	2.20	7.03	17.42
4	1350	2450	7.10	26.72	5	0.36	2.55	6.75	24.17
5	1350	2450	5.83	32.55	11	0.64	3.20	5.19	29.35
6	1400	2500	7.50	40.05	7	0.53	3.72	6.98	36.33
7	1400	2500	6.68	46.73	14	0.94	4.66	5.74	42.07
8	1400	2500	6.68	53.41	13	0.87	5.52	5.81	47.89
9	1400	2500	7.10	60.51	10	0.71	6.23	6.39	54.28
10	1450	2550	6.68	67.19	9	0.60	6.84	6.08	60.35
11	1450	2550	6.26	73.45	7	0.44	7.27	5.82	66.18
12	1450	2550	6.68	80.13	7	0.47	7.74	6.21	72.39
13	1450	2550	6.26	86.39	8	0.50	8.24	5.76	78.15
14	1500	2600	6.26	92.65	8	0.50	8.74	5.76	83.91
15	1500	2600	7.10	99.75	8	0.57	9.31	6.53	90.44
16	1500	2600	6.68	106.43	8	0.53	9.85	6.15	96.58
17	1500	2600	6.26	112.69	7	0.44	10.28	5.82	102.41
18	1500	2600	6.68	119.37	12	0.80	11.09	5.88	108.28
19	1500	2600	7.10	126.47	8	0.57	11.65	6.53	114.82
20	1400	2500	6.68	133.15	5	0.33	11.99	6.35	121.16
21	1450	2550	7.51	140.66	7	0.53	12.51	6.98	128.15
22	1500	2600	5.83	146.49	5	0.29	12.80	5.54	133.69
23	1500	2600	6.26	152.75	11	0.69	13.49	5.57	139.26
24	1500	2600	7.10	159.85	6	0.43	13.92	6.67	145.93
25	1500	2600	5.83	165.68	8	0.47	14.39	5.36	151.29

CONFIDENTIAL

ORIGINAL

RELEASED

APR 26 2000

FROM CONFIDENTIAL

AUGUST 28 97

3.00

SEC 25 T22S R23W

DATE

DAY

LOCATION

SWAB REPORT

RECEIVED
KANSAS CORPORATION COMMISSION

NOV 20 1997

CONSERVATION DIVISION
WICHITA KS

NOV 20

CONFIDENTIAL

WELL NAME

MAXX BILLINGS HZ #1

SERVICE RIG

EXPRESS #1

FLUID TO RECOVER

SWAB NO.	FLUID LEVEL	SWAB DEPTH	RECOVER THIS RUN	CUMM BBL	OIL CUT %	BBL OIL		BBL WATER	
						RECOVER THIS RUN	CUMM.	RECOVER THIS RUN	CUMM.
26	1500	2600	7.10	172.78	9	0.64	15.02	6.48	157.76
27	1500	2600	6.26	179.04	13	0.81	15.84	5.45	163.20
28	1500	2600	6.26	185.30	10	0.63	16.46	5.63	168.84
29	1500	2600	6.68	191.98	10	0.67	17.13	6.01	174.85
30	1500	2600	6.68	198.66	11	0.73	17.87	5.95	180.79
31	1500	2600	6.26	204.92	8	0.50	18.37	5.76	186.55
32	1500	2600	6.68	211.60	4	0.27	18.63	6.41	192.97
33	1500	2600	7.10	218.70	8	0.57	19.20	6.53	198.50
34	1450	2550	6.26	224.96	7	0.44	19.64	5.82	205.32
35	1400	2500	6.68	231.64	3	0.20	19.84	6.48	211.80
36	1500	2600	6.68	238.32	8	0.53	20.38	6.15	217.94
37	1500	2600	6.68	245.00	4	0.27	20.64	6.41	224.36
38	1500	2600	6.26	251.26	8	0.50	21.14	5.76	230.12
39	1550	2650	7.10	258.36	10	0.71	21.85	6.39	236.51
40	1550	2650	6.26	264.62	8	0.50	22.35	5.76	242.27
41	1550	2650	6.68	271.30	11	0.73	23.09	5.95	248.21
42	1550	2650	6.68	277.98	11	0.73	23.82	5.95	254.16
43	1550	2650	6.68	284.66	11	0.73	24.56	5.95	260.10
44	1550	2650	6.26	290.92	9	0.56	25.12	5.70	265.90
45	1550	2650	6.68	297.60	10	0.67	25.79	6.01	271.81
46	1550	2650	6.26	303.86	8	0.50	26.29	5.76	277.57
47	1550	2650	6.68	310.54	10	0.67	26.96	6.01	283.58
48	1550	2650	6.68	317.22	8	0.53	27.49	6.15	289.73
49	1550	2650	6.68	323.90	8	0.53	28.03	6.15	295.87
50	1550	2650	6.68	330.58	8	0.53	28.56	6.15	302.02

RELEASED

APR 26 2000

FROM CONFIDENTIAL

DATE
AUGUST 28 97

DAY
3.00

LOCATION
SEC 25 T22S R23W

DATE

DAY

LOCATION

SWAB REPORT

WELL NAME
MAXX BILLINGS HZ #1

SERVICE RIG
EXPRESS #4

FLUID TO RECOVER

SWAB NO.	FLUID LEVEL	SWAB DEPTH	RECOVER THIS RUN	CUMM BBL	OIL CUT %	BBL OIL		BBL WATER	
						RECOVER THIS RUN	CUMM.	RECOVER THIS RUN	CUMM.
51	1550	2650	6.26	336.84	8	0.50	29.06	5.78	307.78
52	1450	2550	7.50	344.34	8	0.60	29.66	6.90	314.68
53	1500	2600	6.26	350.60	10	0.63	30.29	5.63	320.31
54	1550	2650	6.68	357.28	5	0.33	30.62	6.35	326.66
55	1550	2650	6.26	363.54	7	0.44	31.06	5.82	332.48
56	1550	2650	7.10	370.64	7	0.50	31.56	6.60	339.08
57	1550	2650	6.68	377.32	9	0.60	32.16	6.08	345.16
58	1450	2550	7.10	384.42	11	0.78	32.94	6.32	351.48
59	1550	2650	7.10	391.52	12	0.85	33.79	6.25	357.73
60	1550	2650	6.68	398.20	8	0.53	34.33	6.15	363.87
				398.20		0.00	34.33	0.00	363.87

ORIGINAL

CONFIDENTIAL

RELEASED

APR 26 2000

FROM CONFIDENTIAL

RECEIVED

KANSAS CORPORATION COMMISSION

NOV 20 1997

CONSERVATION DIVISION
WICHITA KS

KCC

NOV 20

CONFIDENTIAL

ORIGINAL

Daily Operations Report

15-083-214470100

DATE: AUGUST 29 97
DAY: 4
WELL NAME: MAXX BILLINGS HZ #1
LOCATION: SEC 25 T22S R 23W
TOTAL DEPTH: 6856' **PBTD:** 6856'
FORMATION: OSAGE
PERFORATIONS: OPEN HOLE 4812' - 6856'
TYPE OF JOB: NEW WELL COMPLETION
PRESENT ACTIVITY: RJH WITH SCAB LINER
RIG TIME: 13 **TOTAL 52**
SUPERVISOR: RON ZUTZ/ RON SCHRAEDER
PHONE: 403-350-1081

DAILY COST SUMMARY	
AFE#:	
AMOUNT:	
TYPE OF SERVICE	AMOUNT
SUPERVISION ZUTZ	400
SUPERVISION STRADER	400
SERVICE RIG EXPRESS	1600
TRUCKING GABEL	
TANK TRUCK SCHWIN	200
DAILY COST: 2600	
PREVIOUS COST: 10300	
CUMMULATIVE COST: 12900	

CONFIDENTIAL

OPERATION:

FOUND WELL WITH SITP TSTM. RIGGED UP TO SWAB. RNA IN AND TAGGED INITIAL FLUID LEVEL AT 1250'. PULLED 53 SWABS AND RECOVERED 354.04 BBLS FLUID IN 7 HOURS. AVERAGE RATE 50 BBLS/HOUR. RECOVERED 32.43 BBLS OF OIL AND 321.61 BBLS OF WATER. AVERAGE CUT 9.1%. WATER IS GETTING A HIGHER SALT CONTENT. UNABLE TO GET EXACT PPM. CHEMICAL MAN AWOL. SWABBING FLUID LEVEL 1600'. RIGGED OUT SWAB EQUIPEMENT. PICKED UP TUBING AND UNSET UNI 6 PACKER. PULLED OUT OF HOLE WITH TUBING AND PACKER. CLOSED IN BLIND RAMS AND SECURED WELL. SDFN.

RELEASED
 APR 26 2000
 FROM CONFIDENTIAL

NOV 20
 CONFIDENTIAL

RECEIVED
 KANSAS CORPORATION COMMISSION

NOV 20 1997

CONSERVATION DIVISION
 WICHITA KS

RELEASED

ORIGINAL

CONFIDENTIAL

1992 6 2000

FROM CONFIDENTIAL

AUGUST 29 97

4.00

SEC 25 T2S R23W

DATE

DAY

LOCATION

SWAB REPORT

RECEIVED
KANSAS CORPORATION COMMISSION

NOV 20 1997

CONSERVATION DIVISION
WICHITA, KS

MAXX BILLINGS HZ #1

EXPRESS #4

WELL NAME

SERVICE RIG

FLUID TO RECOVER

SWAB NO.	FLUID LEVEL	SWAB DEPTH	RECOVER THIS RUN	CUMM BBS	OIL CUT %	BBS OIL		BBS WATER	
						RECOVER THIS RUN	CUMM.	RECOVER THIS RUN	CUMM.
1	1250	2350	6.68	6.68	30	2.00	2.00	4.68	4.68
2	1350	2450	6.68	13.36	1	0.07	2.07	6.61	11.29
3	1350	2450	6.68	20.04	1	0.07	2.14	6.61	17.90
4	1350	2450	6.68	26.72	2	0.13	2.27	6.55	24.45
5	1350	2450	6.68	33.40	13	0.87	3.14	5.81	30.26
6	1400	2500	7.10	40.50	11	0.78	3.92	6.32	36.58
7	1400	2500	6.68	47.18	13	0.87	4.79	5.81	42.39
8	1450	2550	6.68	53.86	12	0.80	5.59	5.88	48.27
9	1450	2550	7.10	60.96	11	0.78	6.37	6.32	54.59
10	1450	2550	6.68	67.64	11	0.73	7.11	5.95	60.53
11	1500	2600	6.68	74.32	9	0.60	7.71	6.08	66.61
12	1500	2600	6.68	81.00	7	0.47	8.18	6.21	72.82
13	1500	2600	6.26	87.26	7	0.44	8.61	5.82	78.65
14	1500	2600	6.68	93.94	6	0.40	9.01	6.28	84.93
15	1500	2600	6.68	100.62	6	0.40	9.42	6.28	91.21
16	1500	2600	6.68	107.30	8	0.53	9.95	6.15	97.35
17	1500	2600	6.26	113.56	7	0.44	10.39	5.82	103.17
18	1500	2600	6.68	120.24	7	0.47	10.86	6.21	109.38
19	1500	2600	6.68	126.92	8	0.53	11.39	6.15	115.53
20	1500	2600	6.68	133.60	10	0.67	12.06	6.01	121.54
21	1500	2600	6.68	140.28	8	0.53	12.59	6.15	127.69
22	1400	2500	6.68	146.96	8	0.53	13.13	6.15	133.83
23	1500	2600	6.68	153.64	10	0.67	13.79	6.01	139.85
24	1500	2600	6.68	160.32	7	0.47	14.26	6.21	146.06
25	1500	2600	6.68	167.00	8	0.53	14.80	6.15	152.20

NOV 20
CONFIDENTIAL

ORIGINAL CONFIDENTIAL

RELEASED

APR 26 2000

FROM CONFIDENTIAL

AUGUST 29 97

4.00

SEC 25 T22S R23W

DATE

DATE

LOCATION

SWAB REPORT

RECEIVED

KANSAS CORPORATION COMMISSION

NOV 20 1997

CONSERVATION DIVISION
WICHITA, KS

WELL NAME
MAXX BILLINGS HZ #1

SERVICE RIG
EXPRESS #4

FLUID TO RECOVER

SWAB NO.	FLUID LEVEL	SWAB DEPTH	RECOVER		OIL CUT %	BB OIL		BBL WATER	
			THIS RUN	CUMM BBL		REVER TR-RUN	BBL OIL CUMM.	RECOVER THIS RUN	BBL WATER CUMM.
26	1500	2600	6.68	173.68	6	0.40	15.20	6.28	158.48
27	1500	2600	6.68	180.36	8	0.53	15.73	6.15	164.63
28	1500	2600	6.68	187.04	12	0.80	16.53	5.88	170.51
29	1500	2600	6.68	193.72	15	1.00	17.54	5.68	176.18
30	1550	2650	6.68	200.40	12	0.80	18.34	5.88	182.06
31	1550	2650	6.68	207.08	11	0.73	19.07	5.95	188.01
32	1550	2650	6.68	213.76	10	0.67	19.74	6.01	194.02
33	1450	2550	6.68	220.44	10	0.67	20.41	6.01	200.03
34	1500	2600	6.68	227.12	9	0.60	21.01	6.08	206.11
35	1550	2650	6.68	233.80	8	0.53	21.54	6.15	212.26
36	1550	2650	6.68	240.48	7	0.47	22.01	6.21	218.47
37	1550	2650	6.68	247.16	5	0.33	22.34	6.35	224.82
38	1550	2650	6.68	253.84	8	0.53	22.88	6.15	230.96
39	1550	2650	6.68	260.52	10	0.67	23.55	6.01	236.97
40	1550	2650	6.68	267.20	13	0.87	24.42	5.81	242.78
41	1550	2650	6.68	273.88	11	0.73	25.15	5.95	248.73
42	1550	2650	6.68	280.56	9	0.60	25.75	6.08	254.81
43	1550	2650	6.68	287.24	10	0.67	26.42	6.01	260.82
44	1600	2700	6.68	293.92	11	0.73	27.15	5.95	266.77
45	1500	2600	6.68	300.60	9	0.60	27.76	6.08	272.84
46	1550	2650	6.68	307.28	9	0.60	28.36	6.08	278.92
47	1550	2650	6.68	313.96	8	0.53	28.89	6.15	285.07
48	1600	2700	6.68	320.64	8	0.53	29.43	6.15	291.21
49	1600	2700	6.68	327.32	4	0.27	29.69	6.41	297.63
50	1600	2700	6.68	334.00	11	0.73	30.43	5.95	303.57

NOV 20
CONFIDENTIAL

ORIGINAL

SWAB REPORT

DATE AUGUST 29 97
DAY 4.00
LOCATION SEC 25 T2S R23W

DATE
DAY
LOCATION

WELL NAME MAXX BILLINGS HZ #1
SERVICE RIG EXPRESS #4

FLUID TO RECOVER _____

SWAB NO.	FLUID LEVEL	SWAB DEPTH	RECOVER THIS RUN	CUMM BBS	OIL CUT %	BBS OIL		BBS WATER	
						RECOVER THIS RUN	CUMM.	RECOVER THIS RUN	CUMM.
51	1600	2700	6.68	340.68	8	0.53	30.96	6.15	309.72
52	1600	2700	6.68	347.36	12	0.80	31.76	5.88	315.60
53	1600	2700	6.68	354.04	10	0.67	32.43	6.01	321.61

CONFIDENTIAL

RELEASED

APR 26 2000

FROM CONFIDENTIAL

KCC

NOV 20

CONFIDENTIAL

RECEIVED
KANSAS CORPORATION COMMISSION

NOV 20 1997

CONSERVATION DIVISION
WICHITA, KS

ORIGINAL

NOV 20 1997

CONFIDENTIAL

Daily Operations Report

15-083-21447

CONSERVATION DIVISION
WICHITA, KS

DATE: AUGUST 30 97
DAY: 5
WELL NAME: MAXX BILLINGS HZ #1
LOCATION: SEC 25 T22S R 23W
TOTAL DEPTH: 6856' **FBTD:** 6856'
FORMATION: OSAGE
PERFORATIONS: OPEN HOLE 4812' - 6856'
TYPE OF JOB: NEW WELL COMPLETION
PRESENT ACTIVITY: RUNNING IN HOLE WITH RODS
RIG TIME: 15 **TOTAL:** 67
SUPERVISOR: RON ZUTZ/ RON SCHRAEDER
PHONE: 403-350-1081

<u>DAILY COST SUMMARY</u>	
<u>AFE#:</u>	
<u>AMOUNT:</u>	
<u>TYPE OF SERVICE</u>	<u>AMOUNT</u>
SUPERVISION ZUTZ	400
SUPERVISION SCHRAEDER	400
SERVICE RIG EXPRESS	1800
GUIBERSON	7000
TANK TRUCK SCHWIN	200
SWIFT PUMP TRUCK	700
<hr/>	
DAILY COST:	10500
PREVIOUS COST:	12900
CUMMULATIVE COST:	23400

RELEASED

APR 26 2000

FROM CONFIDENTIAL

OPERATION:

FOUND WELL DEAD. MADE UP AND RAN IN HOLE WITH SCAB LINER AS FOLLOWS:

1	- PUMP OUT PLUG	.44'	5643.19' KB
2	- JOINTS 2 3/8" TUBING	62.74'	
1	- 4 1/2" GUIBERSON HYDRAULIC TANDEM PACKER (NO SLIPS)	2.34'	5580.01' KB
27	- JOINTS 2 3/8" TUBING	841.16'	
1	- 4 1/2" GUIBERSON UNI 6 PACKER	6.38'	4732.47' KB

KCC
NOV 20
CONFIDENTIAL

POSITIONED PACKERS. FILLED TUBING WITH 24 BBLs WATER TO EQUALIZE FLUID LEVELS. SET UNI 6 PACKER WITH 15000 # TENSION AND COMPRESSION. FILLED TUBING AND PRESSURED UP TO 1200 PSI ON SURFACE AND HYDRALIC TANDEM PACKER SET. CONTINUED PRESSURING UP TO 2100 PSI AND PUMP OUT PLUG BLEW. CAME OFF ON-OFF AND PULLED OUT OF HOLE WITH TUBING. MADE UP FINAL PRODUCTION STRING AND RAN IN HOLE AS FOLLOWS:

4	- JOINTS 2 7/8" TUBING	125.43'	4055.62' KB
1	- 2 7/8" X 3 1/2" SWEDGE	.77'	
1	- 7" VARIPERM RIGHT HAND SET ANCHOR WITH 50000# SHEAR	3.20'	3926.22' KB
1	- 3 1/2" X 4' PUP	4.11'	
1	- 4" TAG BAR PUP	1.31'	3920.80' KB
1	- 4" KUDU 400-TP-1350 STATOR	28.80'	3892.00' KB
1	- 4" X 6' PUP WITH CROSSOVER COLLAR	6.42'	
1	- 3 1/2" X 4' PUP WITH CROSSOVER COLLAR	4.16'	
1	- 2 7/8" X 2' PUP	2.29'	
122	- JOINTS 2 7/8" TUBING	3867.63'	
1	- DOG NUT	.50'	

ORIGINAL

MAXX ENERGY BILLING HZ # 1 AUGUST 30 97 DAY 5 CONTINUED FROM PAGE 1

TOTAL TALLY	4044.62'
DISTANCE H	11.00'
TUBING END AT	4055.62' KB

LANDED TUBING AND REMOVED BOPS. SET ANCHOR AND LANDED DOGNUT WITH 12000# TENSION. INSTALLED PUMPING WELL HEAD. SECURED WELL AND SDFN.

CONFIDENTIAL

RELEASED
APR 26 2000
FROM CONFIDENTIAL

RECEIVED
KANSAS CORPORATION COMMISSION

NOV 20 1997

CONSERVATION DIVISION
WICHITA KS

KCC

NOV 20

CONFIDENTIAL

ORIGINAL

RECEIVED
KANSAS CORPORATION COMMISSION

CONFIDENTIAL

KUDU USA
PUMP INSTALLATION REPORT

NOV 20 1997

CONSERVATION DIVISION
WICHITA, KS

CUSTOMER: Maxx Energy DATE: 8-30-97
 LOCATION: Billings #1/2 4 FIELD: _____
 RIG COMPANY: Express COMPANY REP: Frank
 PUMP SIZE: 400TP1350 ROTOR A902-80° SN STATOR H373 SN 199
 ROD SIZE: 1" CONDITION: New
 CENTRALIZERS: Yes SIZE: 1" x 2 7/8" MAKE: Hyber
 TUBING SIZE: 2 7/8" TUBING CONDITION: New
 TUBING TALLY: 386740 ANCHOR PLACEMENT: 3916.38
 TAIL JOINT: 4 jts 2 7/8' PUP JOINTS: 2 x 2 7/8' 4 x 3 1/2' 6 x 4'
 WELL HEAD EQUIPMENT: 2000#

DRIVE HEAD:
 MODEL: VH100-9.2 SN: 1883 STAND: 50"-60"
 DRIVE HEAD SHEAVE: 5V31.5x4 MOTOR SHEAVE: 5V8.0x4
 BELT SIZE: 5V1180 START UP SPEED: _____
 MOTOR SIZE: 89 HP 75 RPM 1780 FRAME 365T
 ROTOR SPACING: 40" " AFTER STRING WT
 PONY RODS: 1 x 8' 1" x 2'

START UP AMPS: _____ COMMENTS: _____

OVERALL COMMENTS: _____

RELEASED

KCU

APR 26 2000

NOV 20

CONFIDENTIAL

FROM CONFIDENTIAL

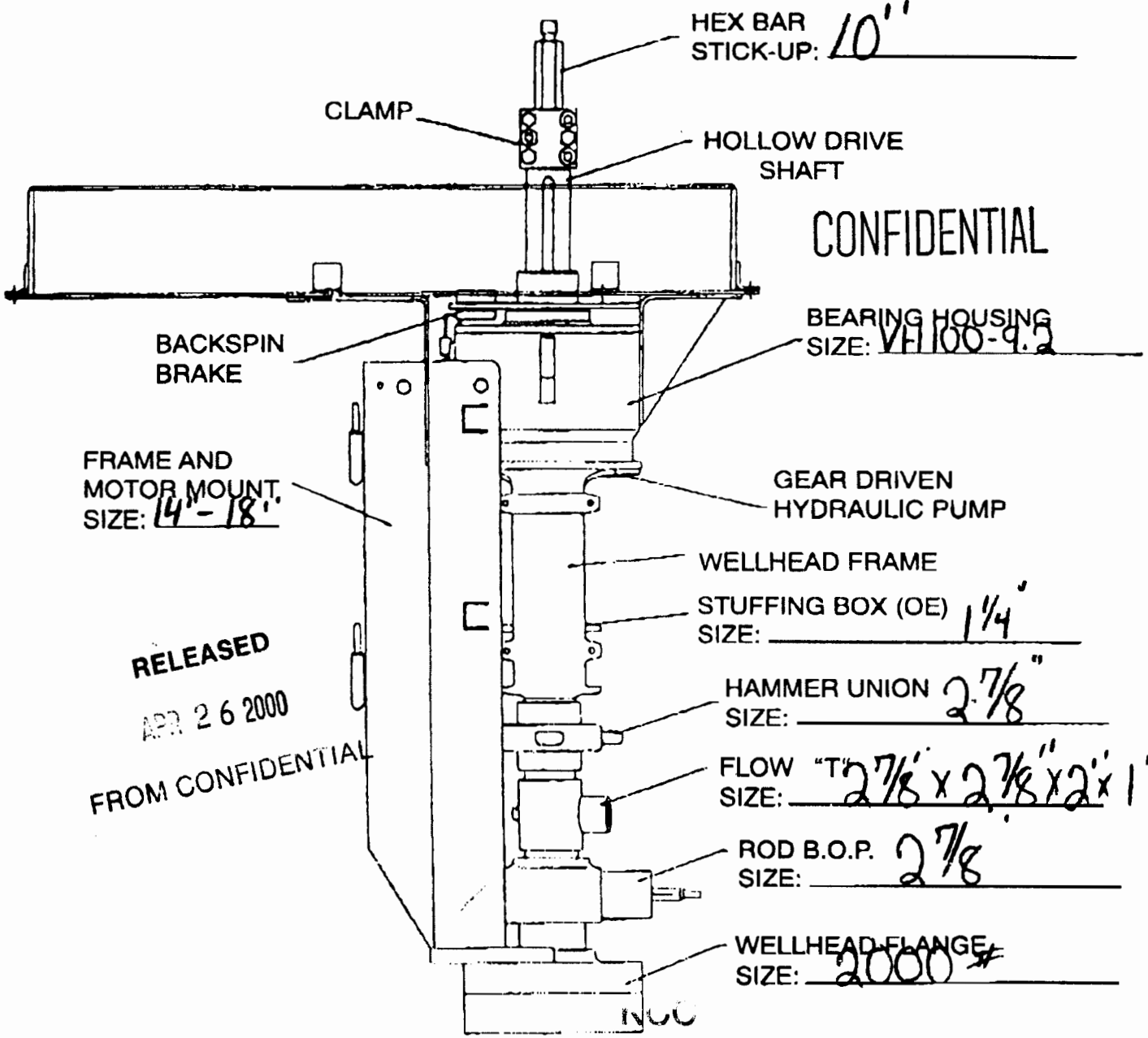
KUDU TEXAS CORP

RECEIVED
KANSAS CORPORATION COMMISSION

OPERATOR: Maxx Energy ORIGINAL
FIELD: Billings
WELL NO.: H2 #4

NOV 20 1997

CONSERVATION DIVISION
WICHITA, KS



RELEASED
APR 26 2000
FROM CONFIDENTIAL

NOV 20

CONFIDENTIAL

STAND HEIGHT: 50" - 60"
DRIVER SHEAVE: 5V 8.0 x 4
DRIVEN SHEAVE: 5V 31.5 x 4
BELTS: 5V 1180

INSTALLER: David Carver
DATE: 8-30-97

UDU TEXAS CORP

WELL NO.: H/2 # 4

OPERATOR: Maxx Energy

FIELD: Billings

ORIGINAL

RELEASED

APR 26 2000

FROM CONFIDENTIAL

3867.40

2.29

4.16

6.42

28.80

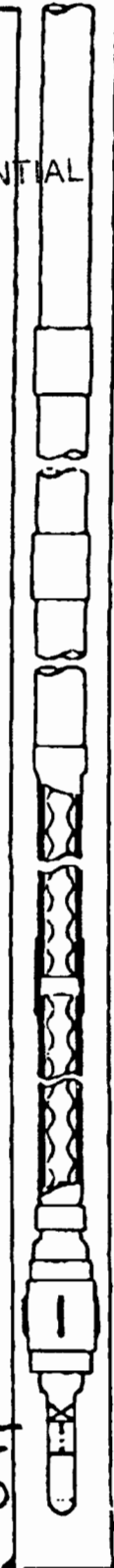
1.31

4.11

3.20

.77

3918.46



CONFIDENTIAL

SURFACE CASING: _____

LS CASING: 7"

TUBING: 2 7/8" - 122

Collar 2 7/8"

Sub 2' x 2 7/8"

COLLAR: 3 1/2" x 2 7/8"

SUB: 4' x 3 1/2"

COLLAR: 4' x 3 1/2"

SUB: 6' x 4"

COLLAR: 4"

PUMP: 400TP1350

ELASTOMER: 199

STATOR NO.: #373

NO. OF ELEMENTS: 3

CL ROD: 4.72

TAG BAR: 1' x 4' x 3 1/2"

SWEDGE: 3 1/2" Collar

Sub 4' x 3 1/2"

ANCHOR: 7" Variperm

STANDING VALVE: 3 1/2" Collar

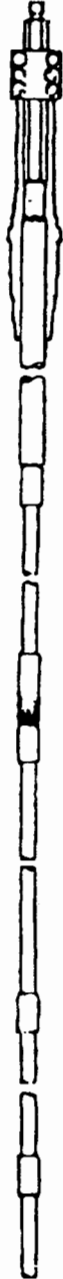
PERF. SUB: 3 1/2" x 2 7/8"

MUD JT: 4' x 2 7/8"

BULL PLUG: _____

PERFORATIONS: _____

PBTD: _____



HEX BAR: 2" x 2" x 1" x 7/8"

CLAMP: 2"

RECEIVED
KANSAS CORPORATION COMMISSION

NOV 20 1997

CONSERVATION DIVISION
WICHITA, KS

POLISHED ROD

X/O CPLG:

SUBS:

GUIDES/ROD:

NOV 20
CONFIDENTIAL

NO. RODS: 154

ROTOR NO.:

TEMP.: 80°

SPACE OUT: 40"

30' x 1 1/4" x 7/8"

7/8" x 1"

4' x 1"

8' x 1"

GUIDES/ROD: 9 3guide

64-2guide

ROD SIZE: 1"

70- Plain

GUIDES/ROD:

10-3guide

PONY ROD: 1-Plain

PUMP LENGTH: 28.80

ROTOR LENGTH: 30.42

RELEASED

CONFIDENTIAL KUDU TEXAS

RECEIVED
KANSAS CORPORATION COMMISSION

APR 26 2000

NOV 20 1997

PUMP TEST REPORT

FROM: CONFIDENTIAL
Company: Max Energy

Date: 8-29-97
CONSERVATION DIVISION
WICHITA, KS.

Location: _____ ORIGINAL

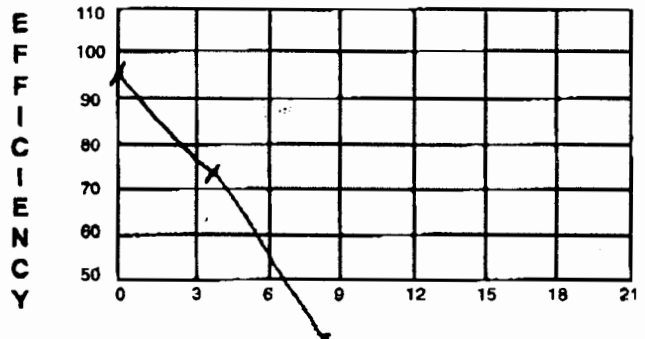
Serial #: Rotor A902-80

Pump Model: 400IP1550

Stator H373-199 (C)

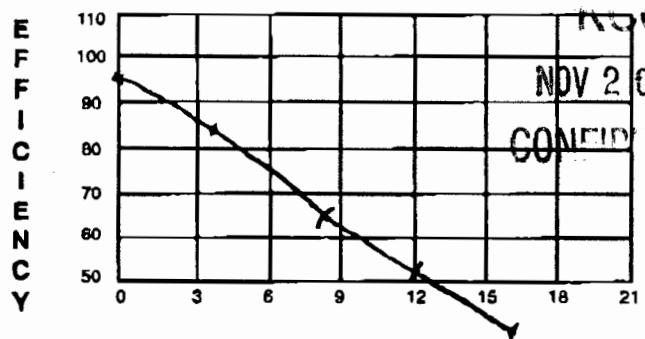
Speed: 1000 RPM Liters Tested: 200 Water Temp: 122 °F Max. Press. 1300 PSI

Press. PSI.	Hydrau. PSI.	Torque ft/lbs.	Time sec.	Effic. %
0	400	135	227	95
400	800	270	29.41	73
800	1250	420	62.40	35
1200				
1600				
2000				
2200				



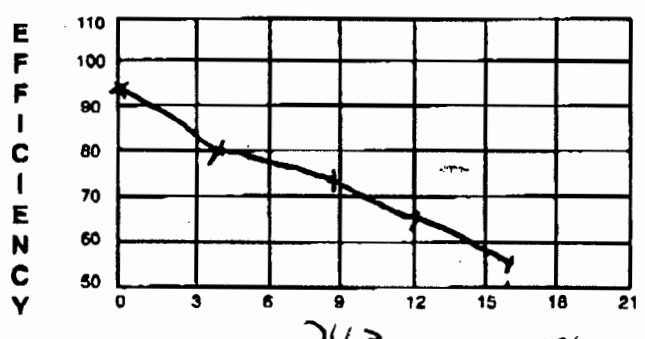
Speed: 500 RPM Liters Tested: 200 Water Temp: 124 °F Max. Press. 1900 PSI

Press. PSI.	Hydrau. PSI.	Torque ft/lbs.	Time sec.	Effic. %
0	500	170	11.4	95
400	850	285	13.04	83
800	1350	455	16.72	65
1200	1800	610	21.15	51
1600	2300	780	27.36	39
2000				
2200				



Speed: 2000 RPM Liters Tested: 200 Water Temp: 124 °F Max. Press. 1950 PSI

Press. PSI.	Hydrau. PSI.	Torque ft/lbs.	Time sec.	Effic. %
0	605	215	7.67	93
400	1000	340	8.91	80
800	1450	490	9.67	73
1200	1900	645	10.82	66
1600	2425	820	12.84	55
2000				
2200				



2.243 756
 2.242 753
 2.242 751

Comments: _____

RELEASED

COMPLETION EQUIPMENT AND SERVICE SYSTEM

CUSTOMER FIELD COPY - PACKING LIST



APR 26 2000

DELIVERY TICKET

DELIVERY TICKET NO.

CP 05860

DRESSER INDUSTRIES, INC.

SHIPPED TO
MAX ENERGY **ORIGINAL**
 ADDRESS
OUT OF CITY LEASERS
 CITY AND STATE
JETMORE, KS (HODGEMAN CO.)
 CARE OF
RON ZUTZ
 BILLINGS HORIZONTAL #1
 (LLASP) (WELL NO) (R/C)
 INVOICE TO
RECEIVED
 ADDRESS
KANSAS CORPORATION COMMISSION
 CITY AND STATE
NOV 20 1997 **KCO**
 OPERATIONAL NOTES
NOV 20

CUSTOMER
 NUMBLR
 SUFF
 LOCATION
 CODE
 STATE
 BILL CODE
 TAX DISC
 CUSTOMER ORDER NO.
 ORDERED BY
HDMM
 DATE
15 01 01
 CUSTOMER REQ. NO.
 TAKEN BY
RON
 FILLED BY
08-30-97
JANIE
JANIE
 SHIPPED VIA
CALL ON
 CITY (COUNTY) OR PARISH
CO./CAR **HODGEMAN**
 STOCK POINT
LIBERAL, KS
 DATE
 Guiberson AVA Division is hereby requested to furnish the material and services listed below under the terms and conditions on reverse side hereof.

CONSERVATION DIVISION
 WICHITA KS
CONFIDENTIAL **CONFIDENTIAL**

PART NUMBER	DESCRIPTION	DISC CODE	QTY SHIPPED	UNIT PRICE	AMOUNT
117 64459	4 1/2" 7.5-11.6# x 2 3/8" UNL-PACKER VI	10	01	2585.10	2585.10
146 28430	4 1/2" x 2 3/8" "XL" ON/OFF TOOL w/3 BONDED SEALS	10	01	1264.90	1264.90
118 91842	4 1/2" x 2 3/8" HYDRAULIC TANDEM PACKER	10	01	1205.40	1205.40
199 30867	2 3/8" 10 RB NUB B x 2 3/8" RB EVE P	10	01	79.63	79.63
PC 6092	2 3/8" PUMP-OUT PLUG S/A	10	01	189.70	189.70
PC 6092	MACHINE CHARGE TO CUT 1.875" X PROFILE IN ON/OFF TOOL GUIDECN	01	01	260.00	260.00
PC 6092	CHARGE TO HOT-SHOT TANDEM HYDRAULIC PKR FROM HOBBS, N.M. TO LIBERAL, KS	01	01	632.00	632.00
SERVICE CHARGES		TL UNITS	UNIT PRICE	AMOUNT	
PC 6004	SERVICE MAN CHARGE, PER DAY (10)	01	352.00	346.40	
PC 6002	ROUND TRIP MILEAGE FROM LIBERAL, KS TO LOCATION	(12)	01	95.00	66.50

SERVICES PERFORMED BY
JANIE JONES
 Guiberson AVA Division
 Dresser Industries, Inc.
 P.O. Box 210700
 Dallas, Texas 75211-0700
 Phone 214/331 3313

Material and services received, as specified above, under terms and conditions on reverse side hereof. Interest will be charged on delinquent accounts at the rate of 1 1/2% per month at the maximum rate allowed by law, whichever is less.
 AUTHORIZED REPRESENTATIVE OF BUYER
MAX ENERGY
 COMPANY NAME
 Thank You

TAX 65.30
 STATE TAX 319.95
 TOTAL \$ 7,012.82
 DT NO. 05860

ORIGINAL

CONFIDENTIAL

Daily Operations Report

15-083-21447-0100

DATE: AUGUST 31 97
DAY: 6
WELL NAME: MAXX BILLINGS HZ #1
LOCATION: SEC 25 T22S R 23W
TOTAL DEPTH: 6856' PBTD: 6856'
FORMATION: OSAGE
PERFORATIONS: OPEN HOLE 4812' - 6856'
TYPE OF JOB: NEW WELL COMPLETION
PRESENT ACTIVITY: WELL DOWN WAITING ON TIE IN
RIG TIME: 15 TOTAL 67
SUPERVISOR: RON ZUTZ/ RON SCHRAEDER
PHONE: 403-350-1081

<u>DAILY COST SUMMARY</u>	
<u>AFE#:</u>	
<u>AMOUNT:</u>	
<u>TYPE OF SERVICE</u>	<u>AMOUNT</u>
SUPERVISION ZUTZ	400
SUPERVISION SCHRAEDER	400
SERVICE RIG EXPRESS	500
KUDU EST ONLY	30000
TANK TRUCK SCHWIN	200
TUBING EST ONLY	18000
DAILY COST:	49500
PREVIOUS COST:	23400
CUMMULATIVE COST:	72900

RELEASED

APR 26 2000

FROM CONFIDENTIAL

OPERATION:

FOUND WELL DEAD. MADE UP ROTOR AND RAN IN HOLE AS FOLLOWS.

- 1 - KUDU ROTOR 30.42'
- 10 - 1" ROD WITH 3 HELIX SPIN THRU GUIDES PER ROD
- 134 - 1" RODS ALTERNATING 1 PLAIN AND 1 ROD WITH 2 HELIX SPIN THRU GUIDES PER ROD
- 9 - 1" RODS WITH 3 HELIX SPIN THRU GUIDES PER ROD
- 2 - 1" PONY RODS (8' AND 4')
- 1 - 1 1/4" X 30' POLISH ROD

SPACED OUT RODS. INSTALLED DRIVE HEAD AND HUNG RODS IN HEAD. INSTALLED MOTOR. RIGGED OUT SERVICE RIG. MOVED RIG TO WHITLEY HZ #1. HOOKED UP POWER TO MOTOR AND CONDUCTED PUMP TEST. SECURED WELL AND SDFN. FLOWLINE TO GUNBARREL. REMAINS TO BE TIED IN AND SOME PIPE FITTING REMAINS TO BE DONE ON DISPOAL WELL.

KCC
NOV 20
CONFIDENTIAL

RECEIVED
KANSAS CORPORATION COMMISSION

NOV 20 1997

CONSERVATION DIVISION
WICHITA, KS