

WELL COMPLETION REPORT AND
DRILLER'S LOG

WICHITA BRANCH

API No. 15 — 083 — 20,870
County Number

Operator

Rine Exploration Company

Address

Suite 645, 300 W. Douglas, Wichita, KS.

Well No.

1-2

Lease Name

Crebbs

Footage Location 330' N of S Line

990' E of W Line

feet from (N) (S) line

feet from (E) (W) line

Principal Contractor

Beredco Drilling Co.

Geologist

M. Bradford Rine

Spud Date

8-2-81

Date Completed

8-9-81

Total Depth

4730'

P.B.T.D.

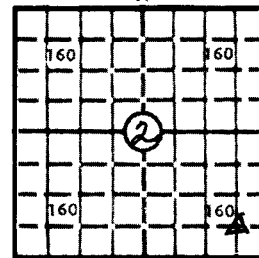
Directional Deviation

Oil and/or Gas Purchaser

S. 2 T. 22S R. 24W E

Loc. C SE $\frac{1}{4}$ SE $\frac{1}{4}$

County Hodgeman

640 Acres
N

Locate well correctly

Elev.: Gr. 2443

DF KB 2448

CASING RECORD

Report of all strings set — surface, intermediate, production, etc.

Purpose of string	Size hole drilled	Size casing set (in O.D.)	Weight lbs/ft.	Setting depth	Type cement	Sacks	Type and percent additives
Surface	12 $\frac{1}{2}$	8 5/8"	23#	624'	Common	400	60-40 poz 2% Gel, 3% CC

LINER RECORD

PERFORATION RECORD

Top, ft.	Bottom, ft.	Sacks cement	Shots per ft.	Size & type	Depth interval

TUBING RECORD

Size	Setting depth	Packer set at			


ACID, FRACTURE, SHOT, CEMENT SQUEEZE RECORD

Amount and kind of material used	Depth interval treated

INITIAL PRODUCTION

Date of first production		Producing method (flowing, pumping, gas lift, etc.)			
RATE OF PRODUCTION PER 24 HOURS	Oil	Gas	Water	Gas-oil ratio	
	bbls.	MCF	bbls.	CFPB	
Disposition of gas (vented, used on lease or sold)			Producing interval (s)		

INSTRUCTIONS: As provided in KCC Rule 82-2-125, within 90 days after completion of a well, one completed copy of this Drillers Log shall be transmitted to the State Geological Survey of Kansas, 4150 Monroe Street, Wichita, Kansas 67209. Copies of this form are available from the Conservation Division, State Corporation Commission, 245 No. Water, Wichita, Kansas 67202. Phone AC 316-522-2206. If confidential custody is desired, please note Rule 82-2-125. Drillers Logs will be on open file in the Oil and Gas Division, State Geological Survey of Kansas, Lawrence, Kansas 66044.

Operator Rine Exploration Company		DESIGNATE TYPE OF COMP.: OIL, GAS, DRY HOLE, SWDW, ETC.: Dry Hole	
Well No. 1-2	Lease Name Crebbs		
S <u>2</u> T <u>22</u> R <u>24</u> ^{XK} _W			
WELL LOG		SHOW GEOLOGICAL MARKERS, LOGS RUN, OR OTHER DESCRIPTIVE INFORMATION.	
Show all important zones of porosity and contents thereof; cored intervals, and all drill-stem tests, including depth interval tested, cushion used, time tool open, flowing and shut-in pressures, and recoveries.			
FORMATION DESCRIPTION, CONTENTS, ETC.	TOP	BOTTOM	NAME
			DEPTH
Sand & Shale	0'	1720'	
Lime & Shale	1720'	4690'	
Mississippi	4690'	4730'	
DST #1 4641' - 4690'. OP 30, SI 30, OP 30, SI 30. Weak blow, died in 27 sec. Rec. 30' mud. IFP 59-69 ISIP 173 FFP 57-57 FSIP 104			
DST #2 4690' - 4702'. OP 30, SI 45, OP 30, SI 30. Weak blow, died in 30 sec. Rec. 40' very slight oil cut mud. IFP 87-81 ISIP 1195 FFP 81-69 FSIP 1027			
DST #3 4702 - 4724'. OP 30, SI 15, OP 15, SI 10. Weak blow, died in 20 sec. Rec. 120' mud. IFP 115-104 ISIP 462 FFP 115-115 FSIP 891			
<u>E-LOG TOPS</u>			
Heebner	3978	-1530	
Lansing	4031	-1583	
Base Kansas City	4404	-1956	
Fort Scott	4574	-2126	
Cherokee	4599	-2151	
Mississippian	4686	-2238	
LTD	4732	-2284	
USE ADDITIONAL SHEETS, IF NECESSARY, TO COMPLETE WELL RECORD.			
Date Received	<div style="text-align: center;">  M. BRADFORD RINE Vice President and Geologist _____ Title October 27, 1981 _____ Date </div>		

DRILLERS LOG

CREBBS #1-2
Hodgeman County
C SE $\frac{1}{4}$ SE $\frac{1}{4}$
Sec. 2-22S-24W

P1
2-22-24^{SW}

Company: Rine Exploration

Contractor: BEREDCO INC.

Comm: August 1, 1981

Comp.: August 9, 1981

Casing: 13 jts., New 23#, 8-5/8" @ 624' w/400 sks 60-40 Pozmix 2% Gel, 3% CC,
Did Circ. PD 2:50 AM, 8/2/81 by Allied
Dry Hole.

<u>FORMATION</u>	<u>FROM</u>	<u>TO</u>
Sand & Shale	0'	1720'
Lime & Shale	1720'	4690'
Mississippi	4690'	4730'

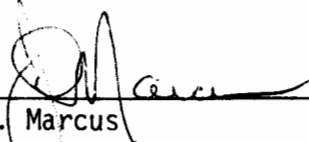
Total Rotary Depth 4730'

STATE OF KANSAS

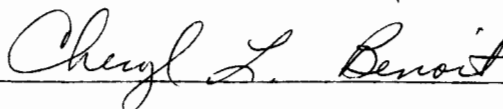
SS:
COUNTY OF SEDGWICK

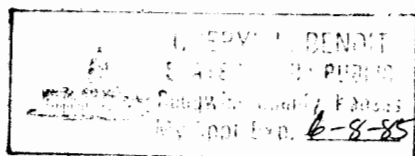
I certify that this is a true and correct copy of the above log as
shown by the drilling reports.

BEREDCO


J. D. Marcus

Subscribed and sworn to before me this 18 day of August, 1981.





2-22-54W