

IMPORTANT
 Kans. Geo. Survey request
 samples on this well.

S. 15 T. 22 R. 24 ^R/_W
 Loc. NE NW
 County Hodgeman

API No. 15 — 083 — 20,383
 County Number

Operator
Pickrell Drilling Company

Address 705 Fourth National Bank Building Wichita, Kansas 67202

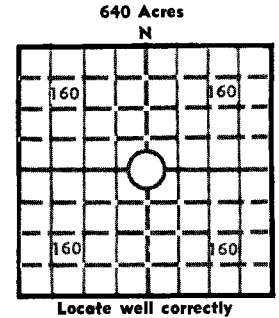
Well No. #1 Lease Name McKibben "A"

Footage Location
 feet from (N) (S) line _____ feet from (E) (W) line _____

Principal Contractor Pickrell Drilling Company Geologist _____

Spud Date July 16, 1974 Total Depth 4781' P.B.T.D. _____

Date Completed July 27, 1974 Oil Purchaser _____



Locate well correctly
 Elev.: Gr. 2463
 DF 2466 KB 2468

CASING RECORD

Report of all strings set — surface, intermediate, production, etc.

Purpose of string	Size hole drilled	Size casing set (in O.D.)	Weight lbs/ft.	Setting depth	Type cement	Sacks	Type and percent additives
		8 5/8		631'		300	

LINER RECORD

PERFORATION RECORD

Top, ft.	Bottom, ft.	Sacks cement	Shots per ft.	Size & type	Depth interval

TUBING RECORD

Size	Setting depth	Packer set at

ACID, FRACTURE, SHOT, CEMENT SQUEEZE RECORD

Amount and kind of material used	Depth interval treated

INITIAL PRODUCTION

Date of first production _____ Producing method (flowing, pumping, gas lift, etc.) _____

DATE OF PRODUCTION PER 24 HOURS	Oil	Gas	Water	Gas-oil ratio
	bbls.	MCF	bbls.	CFPB
Position of gas (vented, used on lease or sold)			Producing interval(s)	

INSTRUCTIONS: As provided in KCC Rule 82-2-125, within 90 days after completion of a well, one completed copy of this Drillers Log shall be transmitted to the State Geological Survey of Kansas, 4150 Monroe Street, Wichita, Kansas 67209. Copies of this form are available from the Conservation Division, State Corporation Commission, 3830 So. Meridian (P.O. Box 17027), Wichita, Kansas 66217. Phone AC 316-522-2206. If confidential custody is desired, please note Rule 82-2-125. Drillers Logs will be on open file in the Oil and Gas Division, State Geological Survey of Kansas, Lawrence, Kansas 66044.

Operator

PICKRELL DRILLING COMPANY

DESIGNATE TYPE OF COMP.: OIL, GAS, DRY HOLE, SWDW, ETC.:

Well No.

Lease Name

McKibbin "A"

Dry Hole

15 T 22SR 24

WELL LOG

Show all important zones of porosity and contents thereof; cored intervals, and all drill-stem tests, including depth interval tested, cushion used, time tool open, flowing and shut-in pressures, and recoveries.

SHOW GEOLOGICAL MARKERS, LOGS RUN, OR OTHER DESCRIPTIVE INFORMATION.

FORMATION DESCRIPTION, CONTENTS, ETC.	TOP	BOTTOM	NAME	DEPTH
Top Soil & Clay	0	35		
Post Rock	35	95		
Shale and sand stringers	95	335		
Shale	335	543		
Sand	543	595		
Shale	595	632		
Sand	632	710		
Shale	710	1205		
Sand	1205	1425		
Shale	1425	1660		
Shale	1660	1740		
Anhydrite	1740	1875		
Shale	1875	2010		
Shale	2010	2425		
Shale	2425	2535		
Lime	2535	2570		
Lime & Shale	2570	2720		
Lime & Shale	2720	2784		
Lime & Shale	2784	2925		
Lime & Shale	2925	3075		
Shale & Lime	3075	3220		
Lime & Shale	3220	3380		
Lime & Shale	3380	3525		
Lime & Shale	3525	3650		
Shale & Lime	3650	3830		
Shale & Lime	3830	3917		
Lime & Shale	3918	4013		

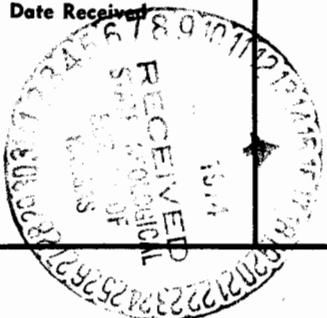
(See Attached Sheet for Continued Well Log)

DST #1: 4688-4727 (Misrun).

DST #2. 4688-4727. Open 1 hour. Weak blow 15". Rec. 15' mud with few oil spots. IFP 53#-35#. FFP 42#-42#. ISIP 239#/30". FSIP 113#/30".

USE ADDITIONAL SHEETS, IF NECESSARY, TO COMPLETE WELL RECORD.

Date Received



Signature

Signature

Title

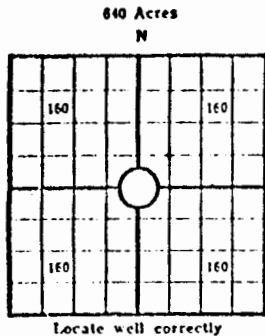
Date

15-22-24w

Information Description, Contents, Etc.	TOP	BOTTOM
Lime & Shale	4013	4053
Lime	4053	4165
Lime & Shale	4165	4220
Lime	4220	4245
Lime	4245	4320
Lime	4320	4415
Lime & Shale	4415	4465
Lime	4465	4533
Lime	4533	4605
Lime & Shale	4605	4655
Lime	4655	4705
Lime	4705	4727
Lime	4727	4727
Lime	4727	4742
Lime	4742	4778
Lime	4778	RTD



15-22-24W



Lease Name: McKibben "A" Well No. 1
 Well Located: NE NW
Hodgeman SEC 15 TWP 22S RGE 24W
 Operator: PICKRELL DRILLING COMPANY
 Address: 705 Fourth Nat'l Bank Bldg., Wichita, Ks. 67202
 Elevation: Ground 2463 D.F. 2466 K.B. 2468
 Type Well: (Oil, gas, dry hole) Dry Hole

Drilling Commenced: 7-16 19 74 Drilling Completed: 7-27 1974
 Well Completed: 7-27 19 74 Total Depth 4781'
 Initial Production: _____

Casing Record

Size: 8 5/8 Set at 631' Size: _____ Set at _____
 Size: _____ Set at _____ Size: _____ Set at _____

Liner Record

Size: _____ Set from _____ To _____

Cementing

<u>Casing Size</u>	<u>Sacks</u>	<u>Type Cement and Additives</u>
<u>8-5/8</u>	<u>300</u>	_____
_____	_____	_____
_____	_____	_____



Perforations

<u>Formation</u>	<u>Perforated Interval and Number Shots</u>
_____	_____
_____	_____
_____	_____
_____	_____

Electric Log Run (Show type log and depths covered)

Electric Logs run by Great Guns

Top Soil & Clay	0	35
Post Bore	35	95
Shale & sand stringers	95	335
Shale	335	543
Sand	543	595
Shale	595	632
Sand	632	710
Shale	710	1205
Sand	1205	1425
Shale	1425	1660
Shale	1660	1740
Anhydrite	1740	1875
Shale	1875	2010
Shale	2010	2425
Shale	2425	2535
Lime	2535	2570
Lime & Shale	2570	2720
Lime & Shale	2720	2784
Lime & Shale	2784	2925
Lime & Shale	2925	3075
Shale & Lime	3075	3220
Lime & Shale	3220	3380
Lime & Shale	3380	3525
Lime & Shale	3525	3650
Shale & Lime	3650	3830
Shale & Lime	3830	3917
Lime & Shale	3917	4013
Lime & Shale	4013	4053
Lime	4053	4165
Lime & Shale	4165	4220
Lime	4220	4245
Lime	4245	4320
Lime	4320	4415
Lime & Shale	4415	4465
Lime	4465	4533
Lime	4533	4605
Lime & Shale	4605	4655
Lime	4655	4705
Lime	4705	4727
Lime	4727	
Lime	4727	4742
Lime	4742	4778
Lime	4778	RTD

DST #1. 4688-4727 (Misrun). 15-22-24
DST #2. 4688-4727. Open 1 hour. Weak
blow 15". Rec. 15' mud with few oil spots.
IFP 53#-35#. FFP 42#-42#. ISIP 239#/30".
FSIP 113#/30".