

## DRILL-STEM TEST DATA

**Well Name:** YORK #12  
**Company :** RAYDON EXPLORATION INC  
**Location - Sec:** 29                      **Twp:** 22S                      **Rge:** 24W  
**County:** HODGEMAN                      **State:** KS  
**Date:** 06/18/95

TRILOBITE TESTING L.L.C.

OPERATOR : RAYDON EXPLORATION INC

DATE 06/17/95

WELL NAME: YORK #2

KB 2477.00 ft

TICKET NO: 7935 DST #1

LOCATION : 29-22S-24W, HODGEMAN CTY

GR 0.00 ft

FORMATION: MISS. DOLO.

INTERVAL : 4638.00 To 4671.00 ft

TD 4671.00 ft

TEST TYPE: CONVENTIONAL

RECORDER DATA

Mins		Field	1	2	3	4	TIME DATA-----
PF 30	Rec.	AK-1	AK-1	AK-1			PF Fr. 30 to hr
SI 30	Range(Psi )	4000.0	4000.0	4375.0	0.0	0.0	IS Fr. 30 to hr
SF 30	Clock(hrs)	23858	23858	25108			SF Fr. 30 to hr
FS 30	Depth(ft )	4642.0	4642.0	4667.0	0.0	0.0	FS Fr. 30 to hr

	Field	1	2	3	4	
A. Init Hydro	2471.0	2473.0	0.0	0.0	0.0	T STARTED hr
B. First Flow	39.0	43.0	0.0	0.0	0.0	T ON BOTM hr
B1. Final Flow	39.0	43.0	0.0	0.0	0.0	T OPEN 0900 hr
C. In Shut-in	147.0	152.0	0.0	0.0	0.0	T PULLED 1100 hr
D. Init Flow	39.0	43.0	0.0	0.0	0.0	T OUT hr
E. Final Flow	39.0	43.0	0.0	0.0	0.0	

	Field	1	2	3	4	TOOL DATA-----
G. Final Hydro	2340.0	2345.0	0.0	0.0	0.0	Tool Wt. 0.00 lbs
Inside/Outside	I	I	O			Wt Set On Packer 0.00 lbs
						Wt Pulled Loose 0.00 lbs
						Initial Str Wt 0.00 lbs

RECOVERY

Tot Fluid	5.00 ft of	0.00 ft in DC and	5.00 ft in DP	Unseated Str Wt	0.00 lbs
5.00	ft of DRILLING MUD W/ OIL SPOTS			Bot Choke	0.75 in
0.00	ft of			Hole Size	7.88 in
0.00	ft of			D Col. ID	0.00 in
0.00	ft of			D. Pipe ID	3.80 in
0.00	ft of			D.C. Length	0.00 ft
0.00	ft of			D.P. Length	0.00 ft

SALINITY 0.00 P.P.M. A.P.I. Gravity 0.00

BLOW DESCRIPTION

INITIAL BLOW -  
WEAK, DIED IN 20 MIN

FINAL BLOW -  
NO BLOW

MUD DATA-----

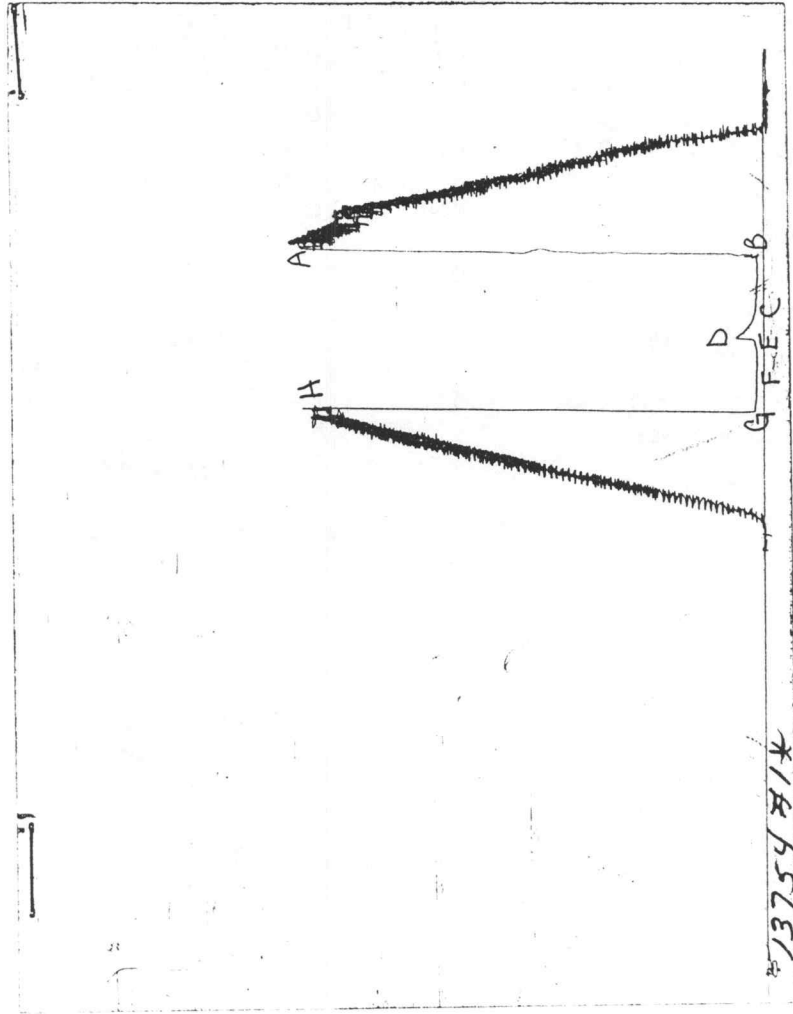
Mud Type	CHEMICAL
Weight	9.40 lb/c
Vis.	45.00 S/L
W.L.	8.80 in3
F.C.	0.00 in
Mud Drop	
Amt. of fill	0.00 ft
Btm. H. Temp.	121.00 F
Hole Condition	
% Porosity	0.00
Packer Size	6.75 in
No. of Packers	2
Cushion Amt.	0.00
Cushion Type	
Reversed Out	
Tool Chased	
Tester	DAN BANGLE
Co. Rep.	BEN LANDIS
Contr.	DUKE
Rig #	1
Unit #	
Pump T.	

SAMPLES:

SENT TO:

Test Successful:

CHART PAGE



This is an actual photograph of an AK1 recorder chart

# TRILOBITE TESTING L.L.C.

P.O. Box 362 • Hays, Kansas 67601

## Test Ticket

No 7935

Well Name & No.	<u>York #2</u>	Test No.	<u>1</u>	Date	<u>6-17-95</u>				
Company	<u>Raydon Exploration, Inc.</u>	Zone Tested	<u>Miss Dolo.</u>						
Address	<u>9400 W. Broadway, OKla City, OKla, 73114</u>	Elevation	<u>2477 K.B.</u>						
Co. Rep./Geo.	<u>Ben Landis</u>	Cont.	<u>Duke #1</u>	Est. Ft. of Pay					
Location: Sec.	<u>29</u>	Twp.	<u>22</u>	Rge.	<u>24</u>	Co.	<u>Hodgeman</u>	State	<u>Ks.</u>
No. of Copies	<u>12</u>	Distribution Sheet	Yes <input checked="" type="checkbox"/>	No <input checked="" type="checkbox"/>	Turnkey	Yes <input checked="" type="checkbox"/>	No <input type="checkbox"/>	Evaluation	

Interval Tested	<u>4638 - 4671</u>	Drill Pipe Size	<u>4.5 XH</u>		
Anchor Length	<u>33</u>	Top Choke — 1"	Bottom Choke — $\frac{3}{4}$ "		
Top Packer Depth	<u>4633</u>	Hole Size — $7\frac{7}{8}$ "	Rubber Size — $6\frac{3}{4}$ "		
Bottom Packer Depth	<u>4638</u>	Wt. Pipe I.D. — 2.7 Ft. Run			
Total Depth	<u>4671</u>	Drill Collar — 2.25 Ft. Run			
Mud Wt.	<u>9.4</u> lb/gal.	Viscosity	<u>45</u>	Filtrate	<u>8.8</u>
Tool Open @	<u>9:00 a.m.</u>	Initial Blow	<u>Weak - Died in 20 min.</u>		

Final Blow No blow

Recovery — Total Feet	<u>5</u>	Feet of Gas in Pipe		Flush Tool?	
Rec.	<u>5</u> Feet Of	<u>D.M. w/oil spots</u>	%gas	%oil	%water <u>100</u> %mud
Rec.	Feet Of		%gas	%oil	%water %mud
Rec.	Feet Of		%gas	%oil	%water %mud
Rec.	Feet Of		%gas	%oil	%water %mud
Rec.	Feet Of		%gas	%oil	%water %mud

BHT 121 °F Gravity \_\_\_\_\_ °API @ \_\_\_\_\_ °F Corrected Gravity \_\_\_\_\_ °API

RW \_\_\_\_\_ @ \_\_\_\_\_ °F Chlorides \_\_\_\_\_ ppm Recovery Chlorides 4000 ppm System

(A) Initial Hydrostatic Mud 2471 PSI Ak1 Recorder No. 13754 Range 4000

(B) First Initial Flow Pressure 39 PSI @ (depth) 4642 w/Clock No. 23858

(C) First Final Flow Pressure 39 PSI AK1 Recorder No. 13849 Range 4375

(D) Initial Shut-In Pressure 147 PSI @ (depth) 4667 w/Clock No. 25108

(E) Second Initial Flow Pressure 39 PSI AK1 Recorder No. \_\_\_\_\_ Range \_\_\_\_\_

(F) Second Final Flow Pressure 39 PSI @ (depth) \_\_\_\_\_ w/Clock No. \_\_\_\_\_

(G) Final Shut-In Pressure 49 PSI Initial Opening 30 Test 600

(H) Final Hydrostatic Mud 2340 PSI Initial Shut-In 30 Jars  200

Final Flow 30 Safety Joint  50

Final Shut-In 30 Straddle \_\_\_\_\_

Circ. Sub \_\_\_\_\_

Sampler \_\_\_\_\_

Extra Packer \_\_\_\_\_

Other \_\_\_\_\_

TOTAL PRICE \$ 850

Approved By \_\_\_\_\_

Our Representative Don Range

TRILOBITE TESTING L.L.C.

OPERATOR : RAYDON EXPLORATION INC  
 WELL NAME: YORK #2  
 LOCATION : 29-22S-24W, HODGEMAN CTY  
 INTERVAL : 4671.00 To 4687.00 ft

DATE 06/17/95

KB 2477.00 ft TICKET NO: 7936 DST #2  
 GR 0.00 ft FORMATION: MISS. DOLO.  
 TD 4687.00 ft TEST TYPE: CONVENTIONAL

RECORDER DATA

Mins		Field	1	2	3	4	TIME DATA-----
PF	0 Rec.	AK-1	AK-1	AK-1			PF Fr. to hr
SI	0 Range(Psi )	4000.0	4000.0	4375.0	0.0	0.0	IS Fr. to hr
SF	0 Clock(hrs)	23858	23858	25108			SF Fr. to hr
FS	0 Depth(ft )	4673.0	4673.0	4683.0	0.0	0.0	FS Fr. to hr

	Field	1	2	3	4	
A. Init Hydro	2552.0	2541.0	0.0	0.0	0.0	T STARTED hr
B. First Flow	0.0	0.0	0.0	0.0	0.0	T ON BOTM hr
B1. Final Flow	0.0	0.0	0.0	0.0	0.0	T OPEN 2215 hr
C. In Shut-in	0.0	0.0	0.0	0.0	0.0	T PULLED hr
D. Init Flow	0.0	0.0	0.0	0.0	0.0	T OUT hr
E. Final Flow	0.0	0.0	0.0	0.0	0.0	
F. Fl Shut-in	0.0	0.0	0.0	0.0	0.0	TOOL DATA-----
G. Final Hydro	2421.0	2409.0	0.0	0.0	0.0	Tool Wt. 0.00 lbs
Inside/Outside	I	I	O			Wt Set On Packer 0.00 lbs

RECOVERY

Tot Fluid 370.00 ft of 0.00 ft in DC and 370.00 ft in DP  
 370.00 ft of DRILLING MUD  
 0.00 ft of  
 0.00 ft of  
 0.00 ft of  
 0.00 ft of  
 0.00 ft of  
 0.00 ft of  
 0.00 ft of

Unseated Str Wt 0.00 lbs  
 Bot Choke 0.75 in  
 Hole Size 7.88 in  
 D Col. ID 0.00 in  
 D. Pipe ID 3.80 in  
 D.C. Length 0.00 ft  
 D.P. Length 0.00 ft

SALINITY 0.00 P.P.M. A.P.I. Gravity 0.00

MUD DATA-----

Mud Type CHEMICAL  
 Weight 9.50 lb/c  
 Vis. 44.00 S/L  
 W.L. 9.60 in3  
 F.C. 0.00 in  
 Mud Drop

BLOW DESCRIPTION

INITIAL BLOW -  
 SLID TOOL 30' TO BOTTOM, PACKERS  
 DIDN'T HOLD, RESET PACKERS - WOULDN'T  
 HOLD

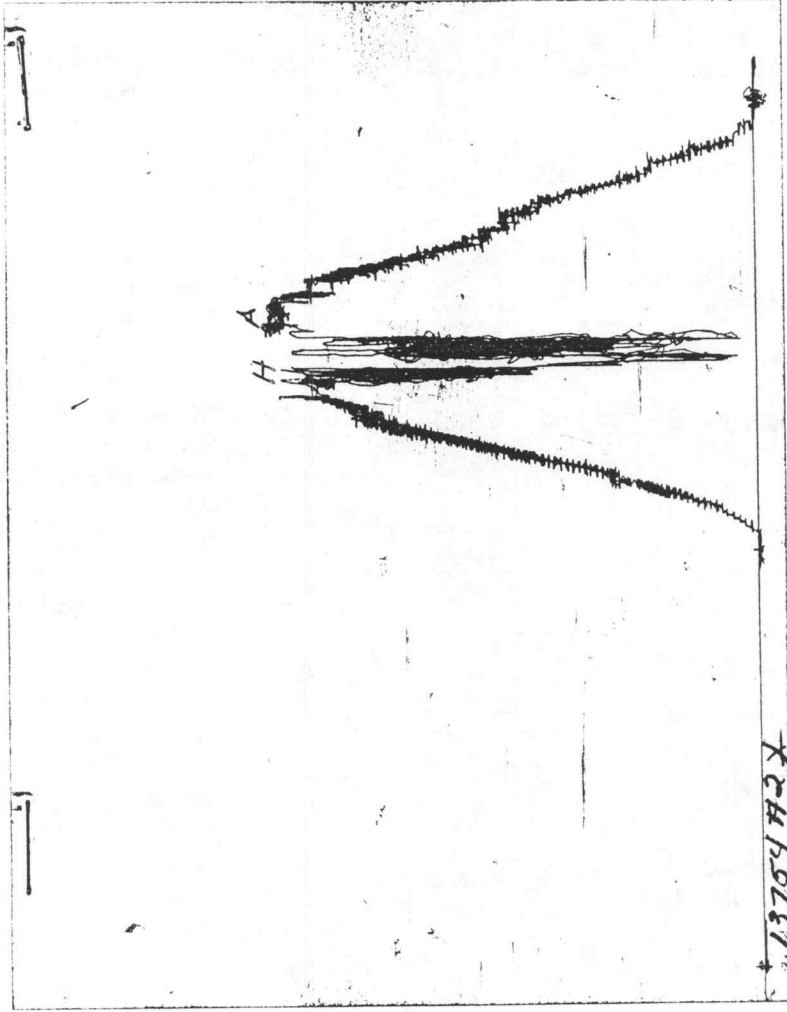
FINAL BLOW -  
 PLUGGED TOOL

Amt. of fill 0.00 ft  
 Btm. H. Temp. 123.00 F  
 Hole Condition  
 % Porosity 0.00  
 Packer Size 6.75 in  
 No. of Packers 2  
 Cushion Amt. 0.00  
 Cushion Type  
 Reversed Out  
 Tool Chased  
 Tester DAN BANGLE  
 Co. Rep. BEN LANDIS  
 Contr. DUKE  
 Rig # 1  
 Unit #  
 Pump T.

SAMPLES:  
 SENT TO:

Test Successful: Y

CHART PAGE



This is an actual photograph of an AK1 recorder chart

# TRILOBITE TESTING L.L.C.

P.O. Box 362 • Hays, Kansas 67601

## Test Ticket

No 7936

Well Name & No.	York #2	Test No.	2	Date	6-17-95						
Company	Raydon Exploration, Inc.	Zone Tested	Miss Delo.								
Address		Elevation	2477 K.B.								
Co. Rep./Geo.	Ben Landis	Cont.	Duke #1	Est. Ft. of Pay							
Location: Sec.	29	Twp.	22	Rge.	24	Co.	Hodgeman	State	Ks		
No. of Copies	12	Distribution Sheet		Yes	X	No	Turnkey	Yes	X	No	Evaluation

Interval Tested	4671 - 4687	Drill Pipe Size	4.5 XH			
Anchor Length	16	Top Choke — 1"	Bottom Choke — 3/4"			
Top Packer Depth	4666	Hole Size — 7 7/8"	Rubber Size — 6 3/4"			
Bottom Packer Depth	4671	Wt. Pipe I.D. — 2.7 Ft. Run				
Total Depth	4687	Drill Collar — 2.25 Ft. Run				
Mud Wt.	9.5	lb/gal.	Viscosity	44	Filtrate	9.6
Tool Open @ 10:15 p.m. Initial Blow Slid Tool 30' To Bottom - Packers didn't hold - Reset Packers - wouldn't hold						
Final Blow Plugged Tool						

Recovery — Total Feet	370	Feet of Gas in Pipe		Flush Tool?			
Rec.	370	Feet Of	D.M.	%gas	%oil	%water	%mud
Rec.		Feet Of		%gas	%oil	%water	%mud
Rec.		Feet Of		%gas	%oil	%water	%mud
Rec.		Feet Of		%gas	%oil	%water	%mud
Rec.		Feet Of		%gas	%oil	%water	%mud

BHT 123 °F Gravity \_\_\_\_\_ °API @ \_\_\_\_\_ °F Corrected Gravity \_\_\_\_\_ °API  
RW \_\_\_\_\_ @ \_\_\_\_\_ °F Chlorides \_\_\_\_\_ ppm Recovery Chlorides 5,000 ppm System

(A) Initial Hydrostatic Mud	2552	PSI	Ak1 Recorder No.	13754	Range	4000
(B) First Initial Flow Pressure		PSI	@ (depth)	4673	w/Clock No.	23858
(C) First Final Flow Pressure		PSI	Ak1 Recorder No.	13849	Range	4375
(D) Initial Shut-In Pressure		PSI	@ (depth)	4683	w/Clock No.	25108
(E) Second Initial Flow Pressure		PSI	Ak1 Recorder No.		Range	
(F) Second Final Flow Pressure		PSI	@ (depth)		w/Clock No.	
(G) Final Shut-In Pressure		PSI	Initial Opening		Test	400
(H) Final Hydrostatic Mud	2421	PSI	Initial Shut-In		Jars	X 200

TRILOBITE TESTING L.L.C. SHALL NOT BE LIABLE FOR DAMAGE OF ANY KIND OF THE PROPERTY OR PERSONNEL OF THE ONE FOR WHOM A TEST IS MADE, OR FOR ANY LOSS SUFFERED OR SUSTAINED, DIRECTLY OR INDIRECTLY, THROUGH THE USE OF ITS EQUIPMENT, OR ITS STATEMENTS OR OPINION CONCERNING THE RESULTS OF ANY TEST. TOOLS LOST OR DAMAGED IN THE HOLE SHALL BE PAID FOR AT COST BY THE PARTY FOR WHOM THE TEST IS MADE.

Final Flow		Safety Joint	X 50
Final Shut-In		Straddle	
		Circ. Sub	
		Sampler	
		Extra Packer	
		Other	Miscun
		TOTAL PRICE \$	650

Approved By \_\_\_\_\_

Our Representative Dan Rangle

TRILOBITE TESTING L.L.C.

OPERATOR : RAYDON EXPLORATION INC  
 WELL NAME: YORK #2  
 LOCATION : 29-22S-24W, HODGEMAN CTY  
 INTERVAL : 4638.00 To 4687.00 ft

DATE 06/18/95  
 KB 2477.00 ft  
 GR 0.00 ft  
 TD 4687.00 ft

TICKET NO: 7937  
 FORMATION: MISS. DOLO.  
 TEST TYPE: CONVENTIONAL

DST #3

RECORDER DATA

Mins		Field	1	2	3	4	TIME DATA-----		
PF 60	Rec.	AK-1	AK-1	AK-1			PF Fr.	to	1 hr
SI 60	Range(Psi )	4000.0	4000.0	4375.0	0.0	0.0	IS Fr.	to	1 hr
SF 60	Clock(hrs)	23858	23858	25108			SF Fr.	to	1 hr
FS 90	Depth(ft )	4642.0	4642.0	4683.0	0.0	0.0	FS Fr.	to	1.5 hr

	Field	1	2	3	4		
A. Init Hydro	2340.0	2333.0	0.0	0.0	0.0	T STARTED	hr
B. First Flow	29.0	32.0	0.0	0.0	0.0	T ON BOTM	hr
B1. Final Flow	49.0	44.0	0.0	0.0	0.0	T OPEN	0830 hr
C. In Shut-in	1236.0	1246.0	0.0	0.0	0.0	T PULLED	1300 hr
D. Init Flow	78.0	73.0	0.0	0.0	0.0	T OUT	hr
E. Final Flow	88.0	91.0	0.0	0.0	0.0		
F. Fl Shut-in	1236.0	1234.0	0.0	0.0	0.0	TOOL DATA-----	
G. Final Hydro	2289.0	2295.0	0.0	0.0	0.0	Tool Wt.	0.00 lbs
Inside/Outside	I	I	O			Wt Set On Packer	0.00 lbs
						Wt Pulled Loose	0.00 lbs
						Initial Str Wt	0.00 lbs
						Unseated Str Wt	0.00 lbs
						Bot Choke	0.75 in
						Hole Size	7.88 in
						D Col. ID	0.00 in
						D. Pipe ID	3.80 in
						D.C. Length	0.00 ft
						D.P. Length	0.00 ft

RECOVERY

Tot Fluid	186.00 ft of	0.00 ft in DC and	186.00 ft in DP
62.00	ft of OIL CUT MUD - 5% OIL, 95% MUD		
62.00	ft of OIL & WATER CUT MUD - 5% OIL, 20% WATER,		
0.00	ft of 75% MUD		
62.00	ft of OIL & WATER CUT MUD - 5% OIL, 35% WATER,		
0.00	ft of 60% MUD		
0.00	ft of		
0.00	ft of		

RW .35 @ 80 F

SALINITY 25000.00 P.P.M. A.P.I. Gravity 0.00

BLOW DESCRIPTION

INITIAL BLOW -  
 WEAK, BUILDING TO 7" FAIR BLOW

FINAL BLOW -  
 WEAK, BUILDING TO 2"

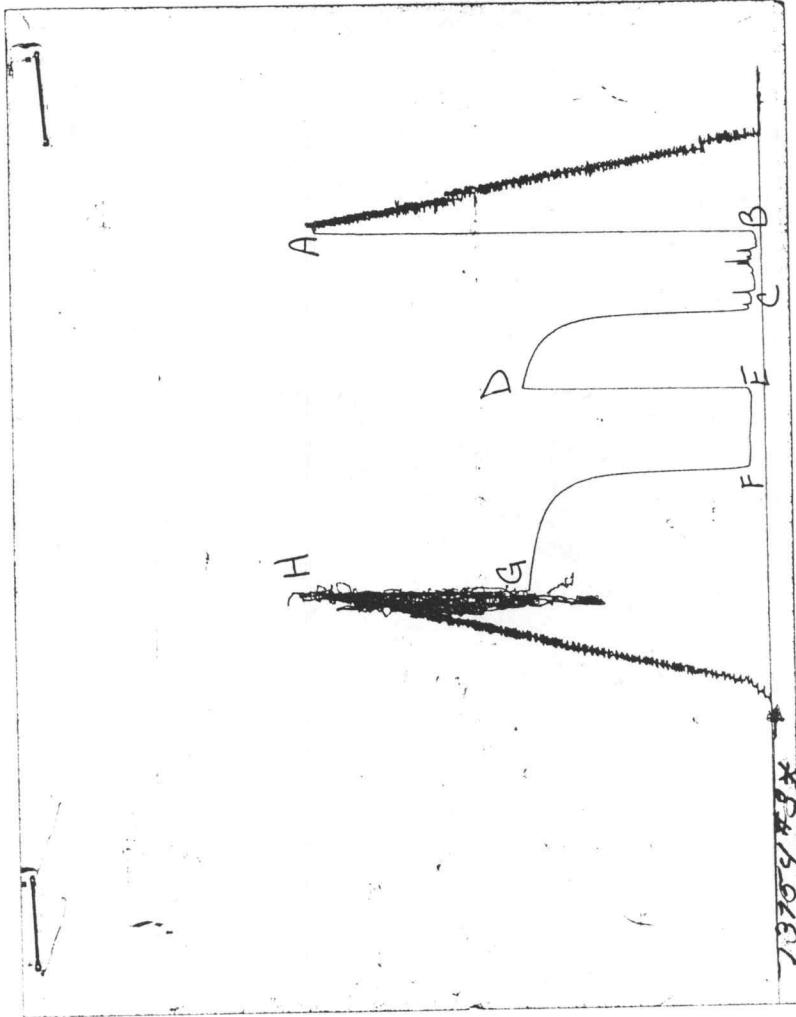
SAMPLES:  
 SENT TO:

MUD DATA-----

Mud Type	CHEMICAL
Weight	9.50 lb/cf
Vis.	44.00 S/L
W.L.	9.60 in <sup>3</sup>
F.C.	0.00 in
Mud Drop	
Amt. of fill	0.00 ft
Btm. H. Temp.	119.00 F
Hole Condition	
% Porosity	0.00
Packer Size	6.75 in
No. of Packers	2
Cushion Amt.	0.00
Cushion Type	
Reversed Out	
Tool Chased	
Tester	DAN BANGLE
Co. Rep.	BEN LANDIS
Contr.	DUKE
Rig #	1
Unit #	
Pump T.	

Test Successful: Y

CHART PAGE



This is an actual photograph of an AK1 recorder chart

## CALCULATED RECOVERY ANAL DRILL PIPE

DST # 3

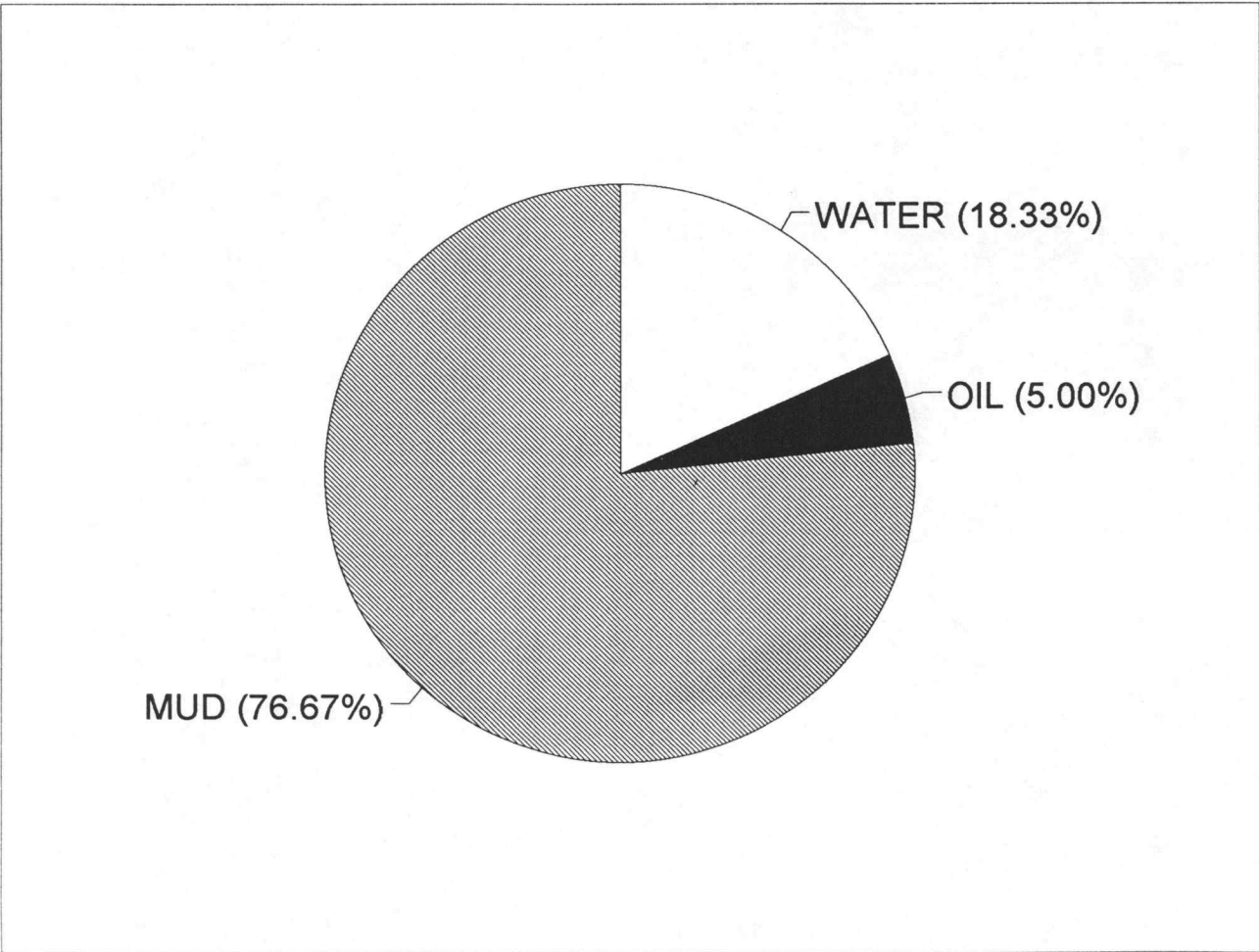
TICKET # 7937

\*\*\*\*\*

SAMPLE #	TOTAL FEET	GAS		OIL		WATER		MUD	
		%	FEET	%	FEET	%	FEET	%	FEET
1	62		0	5	3.1		0	95	58.9
2	62		0	5	3.1	20	12.4	75	46.5
3	62		0	5	3.1	35	21.7	60	37.2
4			0		0		0		0
5			0		0		0		0
6			0		0		0		0
<b>TOTAL</b>	<b>186</b>	<b>0.00</b>	<b>0</b>	<b>5.00</b>	<b>9.3</b>	<b>18.33333</b>	<b>34.1</b>	<b>76.67</b>	<b>142.6</b>

HRS OPE BBL/DAY

BBL OIL=	0.132246	*	2.00	1.59
BBL WATER=	0.484902	*		5.82
BBL MUD=	2.027772			
BBL GAS	0			



# TRILOBITE TESTING L.L.C.

P.O. Box 362 • Hays, Kansas 67601

## Test Ticket

No 7937

Well Name & No. York #2 Test No. 3 Date 6-18-95  
 Company Raydon Exploration, Inc. Zone Tested Miss Dolo.  
 Address \_\_\_\_\_ Elevation 2477 N.D.  
 Co. Rep./Geo. Ben Handis Cont. Duke #1 Est. Ft. of Pay \_\_\_\_\_  
 Location: Sec. 29 Twp. 22 Rge. 24 Co. Hodgeman State Ks.  
 No. of Copies 12 Distribution Sheet \_\_\_\_\_ Yes  No Turnkey \_\_\_\_\_ Yes  No \_\_\_\_\_ Evaluation \_\_\_\_\_

Interval Tested 4638 - 4687 Drill Pipe Size 4.5 X H  
 Anchor Length 49 Top Choke — 1" \_\_\_\_\_ Bottom Choke — 3/4" \_\_\_\_\_  
 Top Packer Depth 4633 Hole Size — 7 7/8" \_\_\_\_\_ Rubber Size — 6 3/4" \_\_\_\_\_  
 Bottom Packer Depth 4638 Wt. Pipe I.D. — 2.7 Ft. Run \_\_\_\_\_  
 Total Depth 4687 Drill Collar — 2.25 Ft. Run \_\_\_\_\_  
 Mud Wt. 9.5 lb/gal. Viscosity 44 Filtrate 9.6  
 Tool Open @ 8:30 a.m. Initial Blow Weak - building to 7" fair blow  
 Final Blow Weak - building to 2"

Recovery — Total Feet	Feet of Gas in Pipe	Flush Tool?
Rec. <u>62</u> Feet Of <u>OCM</u>	%gas <u>5</u> %Oil _____ %water <u>95</u> %mud _____	
Rec. <u>62</u> Feet Of <u>0 + wtr CM</u>	%gas <u>5</u> %Oil <u>20</u> %water <u>75</u> %mud _____	
Rec. <u>62</u> Feet Of <u>0 + wtr CM</u>	%gas <u>5</u> %Oil <u>35</u> %water <u>60</u> %mud _____	
Rec. _____ Feet Of _____	%gas _____ %Oil _____ %water _____ %mud _____	
Rec. _____ Feet Of _____	%gas _____ %Oil _____ %water _____ %mud _____	

BHT 119 °F Gravity \_\_\_\_\_ °API @ \_\_\_\_\_ °F Corrected Gravity \_\_\_\_\_ °API  
 RW 135 @ 80 °F Chlorides 25,000 ppm Recovery Chlorides 5,000 ppm System

(A) Initial Hydrostatic Mud 2340 PSI AK1 Recorder No. 13754 Range 4000  
 (B) First Initial Flow Pressure 29 PSI @ (depth) 4642 w/Clock No. 23858  
 (C) First Final Flow Pressure 49 PSI AK1 Recorder No. 13849 Range 4375  
 (D) Initial Shut-In Pressure 1236 PSI @ (depth) 4683 w/Clock No. 25108  
 (E) Second Initial Flow Pressure 78 PSI AK1 Recorder No. \_\_\_\_\_ Range \_\_\_\_\_  
 (F) Second Final Flow Pressure 88 PSI @ (depth) \_\_\_\_\_ w/Clock No. \_\_\_\_\_  
 (G) Final Shut-In Pressure 1236 PSI Initial Opening 60 Test 600  
 (H) Final Hydrostatic Mud 2289 PSI Initial Shut-In 60 Jars  200  
 Final Flow 60 Safety Joint  50  
 Final Shut-In 90 Straddle \_\_\_\_\_  
 Circ. Sub \_\_\_\_\_  
 Sampler \_\_\_\_\_  
 Extra Packer \_\_\_\_\_  
 Other \_\_\_\_\_

TRILOBITE TESTING L.L.C. SHALL NOT BE LIABLE FOR DAMAGE OF ANY KIND OF THE PROPERTY OR PERSONNEL OF THE ONE FOR WHOM A TEST IS MADE, OR FOR ANY LOSS SUFFERED OR SUSTAINED, DIRECTLY OR INDIRECTLY, THROUGH THE USE OF ITS EQUIPMENT, OR ITS STATEMENTS OR OPINION CONCERNING THE RESULTS OF ANY TEST. TOOLS LOST OR DAMAGED IN THE HOLE SHALL BE PAID FOR AT COST BY THE PARTY FOR WHOM THE TEST IS MADE.

Approved By [Signature]  
 Our Representative Dan Banga

Printcraft Printers - Hays, KS

TOTAL PRICE \$ 850