

WELL COMPLETION REPORT AND DRILLER'S LOG

KANSAS
State Geological Survey
WICHITA, BRANCH
AUG 8 0 REC'D

S. 17 T. 22S R. 35 W
Loc. C/SE SE of Sec. 17

API No. 15 — 093 — 20672
County Number

Operator
Gulf Oil Corporation

Address
P.O. Box 12116, Oklahoma City, OK 73157

Well No. 2-17 Lease Name Bopp

Footage Location
660 feet from (QB) (S) line 4620 feet from (QB) (W) line Sec. 17

Principal Contractor
Rains & Williamson

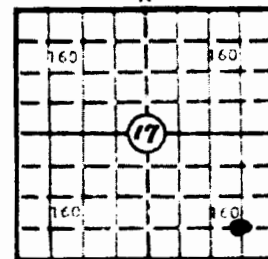
Geologist

Spud Date 04-29-80 Date Completed 07-20-80 Total Depth 5005 P.B.T.D. 4840

Directional Deviation ----- Oil and/or Gas Purchaser
WAITING ON PIPELINE CONNECTION

County Kearny

640 Acres
N



Locate well correctly

Elev.: Gr. 3107'

DF --- KB ---

CASING RECORD

Report of all strings set — surface, intermediate, production, etc.

Purpose of string	Size hole drilled	Size casing set (in O.D.)	Weight lbs/ft.	Setting depth	Type cement	Sacks	Type and percent additives
SURFACE	12-1/4"	8-5/8"	24.0	600	Class "A"	175... 100...	16% Gel+3%NaCl+2% 2% CaCl. CaCl
PRODUCTION	7-7/8"	5-1/2"	14 and 15.5	5004	50:50 Poz	250	2% Gel

LINER RECORD

PERFORATION RECORD

Top, ft.	Bottom, ft.	Sacks cement	Shots per ft.	Size & type	Depth interval
none	----	-----	1	4" OD Hyper II	4530-4538

TUBING RECORD

Size	Setting depth	Packer set at
2-3/8"	4554	4508

ACID, FRACTURE, SHOT, CEMENT SQUEEZE RECORD

Amount and kind of material used	Depth interval treated
Spotted 1 bbl 7½% MCA; treated down tubing w/1,000 gals 7½% MCA.	4530-4538 (Cherokee Sand)
Flushed w/1200 gals 2% KCl wtr. AIR 5 BPM. Max IP 1500#.	
AIP 1200#. ISIP 500#.	

INITIAL PRODUCTION

Date of first production		Producing method (flowing, pumping, gas lift, etc.)			
08-13-80		Pumping			
RATE OF PRODUCTION PER 24 HOURS	Oil	Gas	Water	Gas-oil ratio	
	40 bbls.	-0- MCF	-0- bbls.	----- CFPB	
Disposition of gas (vented, used on lease or sold)			Producing interval(s)		
TO BE SOLD			Cherokee Sand 4530-4538.		

INSTRUCTIONS: As provided in KCC Rule 82-2-125, within 90 days after completion of a well, one completed copy of this Drillers Log shall be transmitted to the State Geological Survey of Kansas, 4150 Monroe Street, Wichita, Kansas 67209. Copies of this form are available from the Conservation Division, State Corporation Commission, 245 No. Water, Wichita, Kansas 67202. Phone AC 316-522-2206. If confidential custody is desired, please note Rule 82-2-125. Drillers Logs will be on open file in the Oil and Gas Division, State Geological Survey of Kansas, Lawrence, Kansas 66044.

Operator Gulf Oil Corporation		DESIGNATE TYPE OF COMP.: OIL, GAS, DRY HOLE, SWDW, ETC.:
Well No. 2-17	Lease Name Bopp	OIL
S <u>17</u> T <u>22</u> S <u>R 35</u> ^W		

WELL LOG

Show all important zones of porosity and contents thereof; cored intervals, and all drill-stem tests, including depth interval tested, cushion used, time tool open, flowing and shut-in pressures, and recoveries.

SHOW GEOLOGICAL MARKERS, LOGS RUN,
OR OTHER DESCRIPTIVE INFORMATION.

FORMATION DESCRIPTION, CONTENTS, ETC.	TOP	BOTTOM	NAME	DEPTH
Clay, Sand	0	606		
Sd	606	1702		
Sh	1702	2248		
Lm, Sh	2248	4499		
Lm	4499	4770		
Sh, Lm	4770	5005		
USE ADDITIONAL SHEETS, IF NECESSARY, TO COMPLETE WELL RECORD.				

Date Received	<div><i>Dorretta Moore</i></div> <div>DORRETTA MOORE</div> <div>Drilling Clerk</div> <div>August 19, 1980</div>
	<div>Signature</div> <div>Title</div> <div>Date</div>