



20-22-35W

State Geological Survey  
WICHITA BRANCH

April 4, 1978

KANSAS GEOLOGICAL SOCIETY & LIBRARY  
303 Insurance Building  
212 North Market  
Wichita, Kansas 67202

Gentlemen:

Enclosed are the "Driller's Log" on the following two wells:

Rooney "C" - C NE NE Sec. 20-22S-35W  
Kearny County, Kansas

Lake #1 - SE SW NE Sec. 9-8S-25W  
Graham County, Kansas

Also enclosed is the "Geological Report" on the Rooney "C" described above. Please make a copy of this and return to us.

We are including a sepia copy on the Lake #1, above. Please make a copy of this for your file, and also furnish the Kansas Geological Survey a copy and return the sepia to us.

Yours very truly,

J. A. ALLISON

By Frances O. Erhard  
Frances O. Erhard

FOE:llo  
Enclosures

CC: Kansas Geological Survey



15-093-20471

**IMPORTANT**  
 Kans. Geo. Survey request samples on this well.

State Geological Survey  
 KANSAS DRILLERS LOG

S. 20 T. 22 R. 35 <sup>E</sup>/<sub>W</sub>  
 Loc. C NE NE  
 County Kearny

API No. 15 — 093 — 20,471  
 County Number

Operator  
J. A. Allison

Address  
300 W. Douglas, Suite 305 Wichita, Kansas 67202

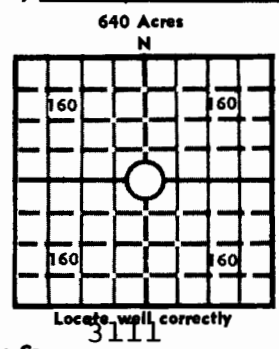
Well No. # 1 Lease Name Rooney "C"

Footage Location  
660 feet from (N) line 660 feet from (E) line

Principal Contractor DNB Drilling Inc. Geologist Robert J. Gill

Spud Date December 20, 1977 Total Depth 5005' P.B.T.D.

Date Completed January 5, 1978 Oil Purchaser Gulf Oil



Elev.: Gr. 3111  
 DF 3109 KB 3106

**CASING RECORD**

Report of all strings set — surface, intermediate, production, etc.

Purpose of string	Size hole drilled	Size casing set (in O.D.)	Weight lbs/ft.	Setting depth	Type cement	Sacks	Type and percent additives
Surface	12-1/4"	8-5/8"		287'	Class H	275	2% Gel, 3% cc
Prod.	5-1/2"			4631		200	60/40 poz 10% salt
							10 bbl flush

**LINER RECORD**

**PERFORATION RECORD**

Top, ft.	Bottom, ft.	Sacks cement	Shots per ft.	Size & type	Depth interval
			2	Golden Jets	4491-4499
<b>TUBING RECORD</b>			2	Jumbo Jets	
Size	Setting depth	Packer set at			
2-7/8"					

**ACID, FRACTURE, SHOT, CEMENT SQUEEZE RECORD**

Amount and kind of material used	Depth interval treated
2000 Gals 15% HCL Acid (Dowell) 2/bbl per min -4/bbl per min.	4491-4499

**INITIAL PRODUCTION**

Date of first production <u>March 10, 1978</u>	Producing method (flowing, pumping, gas lift, etc.) <u>Pumping</u>
RATE OF PRODUCTION PER 24 HOURS	Oil <u>90</u> bbls. Gas <u>1</u> MCF Water <u>1</u> bbls. Gas-oil ratio <u>CFPB</u>
Disposition of gas (vented, used on lease or sold)	Producing interval (s) <u>4491-4500'</u>

INSTRUCTIONS: As provided in KCC Rule 82-2-125, within 90 days after completion of a well, one completed copy of this Drillers Log shall be transmitted to the State Geological Survey of Kansas, 4150 Monroe Street, Wichita, Kansas 67209. Copies of this form are available from the Conservation Division, State Corporation Commission, 3830 So. Meridian (P.O. Box 17027), Wichita, Kansas 66217. Phone AC 316-522-2206. If confidential custody is desired, please note Rule 82-2-125. Drillers Logs will be on open file in the Oil and Gas Division, State Geological Survey of Kansas, Lawrence, Kansas 66044.

Operator J. A. ALLISON DESIGNATE TYPE OF COMP.: OIL, GAS, DRY HOLE, SWDW, ETC.:

Well No. #1 Lease Name Rooney "C" Oil

S 20 T 22 S R 35 W E W

**WELL LOG**  
 Show all important zones of porosity and contents thereof; cored intervals, and all drill-stem tests, including depth interval tested, cushion used, time tool open, flowing and shut-in pressures, and recoveries. SHOW GEOLOGICAL MARKERS, LOGS RUN, OR OTHER DESCRIPTIVE INFORMATION.

FORMATION DESCRIPTION, CONTENTS, ETC.	TOP	BOTTOM	NAME	DEPTH
DST #1, - op 30 si 45; op 60 si 45 Good blow, gas to surface 65 min. Rec. 1430' gassy oil. 60' ocm. IF 261, FF 522, ISIP 1224, FSIP 1191. Temp 105	4484	4515	ELECTRIC LOG	TOPS:
			Heebner	3836
			Toronto	3850
			Lansing	3889
			BKC	4352
			Marmaton	4378
			Beymer Zn	4463
			Johnson Zn	4487
			Cherokee	4516
			Morrow Shale	4746
			Miss (Ste. Gen)	4849
RTD	5005			

USE ADDITIONAL SHEETS, IF NECESSARY, TO COMPLETE WELL RECORD.

Date Received	<i>J. A. Allison</i>
	J. A. Allison OPERATOR
	April 4, 1978

DRILLERS' LOG

J. A. ALLISON  
No. 1 Rooney "C"  
C NE NE Sec. 20-22S-35W  
Kearny Co., Ks.

Commenced: 12-10-77  
Completed: 1-4-78

Surface Casing: 272.82' of 8-5/8"  
cemented w/275 sx Class H, 2% gel,  
3% cc. 12-21-77

FORMATION

DEPTH

Surface Hole	0 - 287
Sand & Shale	287 - 880
Sand & Lime	880 - 1537
Shale & Sand	1537 - 1885
Shale	1885 - 2265
Shale & Lime	2265 - 2565
Shale	2565 - 2880
Shale & Lime	2880 - 2920
Lime & Shale	2920 - 3120
Shale & Lime	3120 - 3274
Lime & Shale	3274 - 3845
Lime	3845 - 3924
Lime & Shale	3924 - 4003
Lime	4003 - 4257
Shale & Red Bed	4257 - 4347
Lime	4347 - 4480
Cherokee Shale	4480 - 4642
Lime	4642 - 4725
Shale & Lime	4725 - 4816
Lime	4816 - 5005 RTD

I do hereby certify that the foregoing statements are true and correct to the best of my knowledge and belief.

D N B DRILLING, INC.

*Ella Priess*

Ella Priess

STATE OF KANSAS: ss:

Subscribed and sworn to before me this 6th day of January, 1978.

*Dorothy L. Schmidt*  
Dorothy L. Schmidt