



WESTERN TESTING CO., INC.
FORMATION TESTING

TICKET NO 9228

P. O. BOX 1599 WICHITA, KANSAS 67201
PHONE (316) 262-5861

Elevation N/A Formation L.A.C. Eff. Pay - Ft.

District G.T. Bend Date 10-24-85 Customer Order No.

COMPANY NAME Rupe Oil Company, Inc. ADDRESS P.O. Box 2273 Wichita, Ks, 67201

LEASE AND WELL NO. HOWARD #1 COUNTY Reno STATE Ks, Sec. 21 Twp. 23 Rge. 10

Mail Invoice To Same No. Copies Requested 5

Mail Charts To #1 Howard Same No. Copies Requested 5

Formation Test No. 1 Interval Tested From 3325 ft. to 3410 ft. Total Depth 3410 ft.
Packer Depth 3320 ft. Size 6 5/8 in. Packer Depth - ft. Size - in.
Packer Depth 3325 ft. Size 6 5/8 in. Packer Depth - ft. Size - in.

Top Recorder Depth (Inside) 3339 ft. Recorder Number 10270 Cap. 4150
Bottom Recorder Depth (Outside) 3342 ft. Recorder Number 3659 Cap. 4000
Below Straddle Recorder Depth - ft. Recorder Number - Cap. -

Drilling Contractor H-30 dng rig 2 Drill Collar Length 120 I. D. 2.2 in.
Mud Type STARCH Viscosity 41 Weight Pipe Length - I. D. - in.
Weight 9.7 Water Loss 12.4 cc. Drill Pipe Length 3183 I. D. 3.8 in.
Chlorides 54000 P.P.M. Test Tool Length 22 ft. Tool Size 5 1/2 in.
Jars: Make - Serial Number - Anchor Length 85 ft. Size 5 1/2 in.
Did Well Flow? NO Reversed Out NO Surface Choke Size 3/4 in. Bottom Choke Size 3/4 in.
Main Hole Size 7 7/8 in. Tool Joint Size 4 1/2 X 1 1/2 in.

Blow: FF - Weak building to a strong blow in 20 min.
FF - Strong Blow Throughout

Recovered 600 ft. of GAS in Pipe
Recovered 200 ft. of GAS cut muddy water
Recovered 180 ft. of WATER
Recovered - ft. of
Recovered - ft. of
Chlorides 98,000 P.P.M. Sample Jars used 4 Remarks:

Time On Location 6:15 A.M. Time Pick Up Tool 8:30 A.M. Time Off Location 4:20 A.M.
Time Set Packer(s) 10:15 A.M. Time Started Off Bottom 1:45 P.M. Maximum Temperature 106°
Initial Hydrostatic Pressure (A) 1786 P.S.I.
Initial Flow Period Minutes 45 (B) 62 P.S.I. to (C) 135 P.S.I.
Initial Closed In Period Minutes 60 (D) 1226 P.S.I.
Final Flow Period Minutes 45 (E) 1066 P.S.I. to (F) 208 P.S.I.
Final Closed In Period Minutes 60 (G) 1184 P.S.I.
Final Hydrostatic Pressure (H) 1786 P.S.I.

COMPANY TERMS
Western Testing Co., Inc. shall not be liable for damages of any kind to the property or personnel of the one for whom a test is made or for any loss suffered or sustained directly or indirectly through the use of its equipment, of its statements or opinion concerning the results of any test. Tools lost or damaged in the hole shall be paid at cost by the party for whom the test is made.
All charges subject to 12% interest after 60 days from date of invoice. Any expense incurred for collection will be added to the original amount.
Becca Rupe
Test Approved By [Signature] Signature of Customer or his authorized representative

FIELD INVOICE
Open Hole Test \$ 550
Miscrun \$
Straddle Test \$
Jars \$
Selective Zone \$
Safety Joint \$
Standby \$
Evaluation \$
Extra Packer \$
Circ. Sub. \$
Mileage \$
Fluid Sampler \$
Extra Charts \$

Western Representative Ray Schwager Thank

WESTERN TESTING CO., INC.

Pressure Data

Date 10-24

Test Ticket No. 9228

Recorder No. 10270

Capacity _____ Location _____ Ft

Clock No. _____ Elevation _____ Well Temperature _____ °F

Point	Pressure	Open Tool	Time Given	Time Computed
A Initial Hydrostatic Mud	<u>1793</u> P.S.I.			
B First Initial Flow Pressure	<u>85</u> P.S.I.	First Flow Pressure	<u>45</u> Mins.	<u>45</u> Mins.
C First Final Flow Pressure	<u>141</u> P.S.I.	Initial Closed-in Pressure	<u>60</u> Mins.	<u>63</u> Mins.
D Initial Closed-in Pressure	<u>1233</u> P.S.I.	Second Flow Pressure	<u>45</u> Mins.	<u>45</u> Mins.
E Second Initial Flow Pressure	<u>173</u> P.S.I.	Final Closed-in Pressure	<u>60</u> Mins.	<u>63</u> Mins.
F Second Final Flow Pressure	<u>219</u> P.S.I.			
G Final Closed-in Pressure	<u>1198</u> P.S.I.			
H Final Hydrostatic Mud	<u>1766</u> P.S.I.			

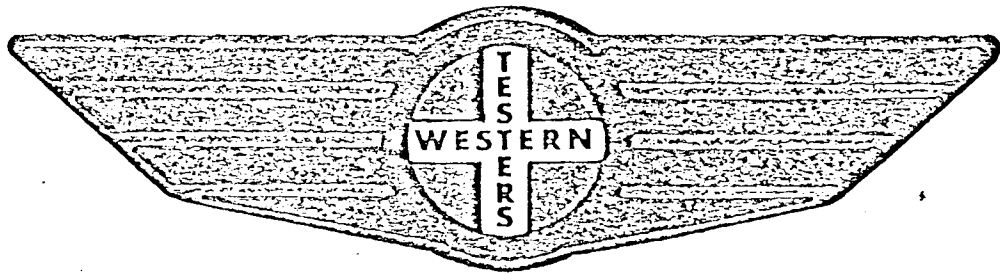
PRESSURE BREAKDOWN

First Flow Pressure Breakdown:		Initial Shut-In Breakdown:		Second Flow Pressure Breakdown:		Final Shut-In Breakdown:	
of <u>10</u> mins. and a final inc. of <u>0</u> Min.		of <u>22</u> mins. and a final inc. of <u>0</u> Min.		of <u>10</u> mins. and a final inc. of <u>0</u> Min.		of <u>22</u> mins. and a final inc. of <u>0</u> Min.	
Point Mins.	Press.	Point Minutes	Press.	Point Minutes	Press.	Point Minutes	Press.
P 1 0	<u>85</u>	0	<u>141</u>	0	<u>173</u>	0	<u>219</u>
P 2 5	<u>85</u>	3	<u>360</u>	5	<u>173</u>	3	<u>440</u>
P 3 10	<u>85</u>	6	<u>664</u>	10	<u>173</u>	6	<u>674</u>
P 4 15	<u>91</u>	9	<u>822</u>	15	<u>177</u>	9	<u>830</u>
P 5 20	<u>97</u>	12	<u>923</u>	20	<u>185</u>	12	<u>921</u>
P 6 25	<u>106</u>	15	<u>990</u>	25	<u>195</u>	15	<u>975</u>
P 7 30	<u>117</u>	18	<u>1033</u>	30	<u>200</u>	18	<u>1017</u>
P 8 35	<u>127</u>	21	<u>1068</u>	35	<u>207</u>	21	<u>1044</u>
P 9 40	<u>134</u>	24	<u>1094</u>	40	<u>215</u>	24	<u>1073</u>
P10 45	<u>141</u>	27	<u>1115</u>	45	<u>219</u>	27	<u>1093</u>
P11 50		30	<u>1135</u>	50		30	<u>1110</u>
P12 55		33	<u>1154</u>	55		33	<u>1126</u>
P13 60		36	<u>1168</u>	60		36	<u>1139</u>
P14 65		39	<u>1180</u>	65		39	<u>1149</u>
P15 70		42	<u>1192</u>	70		42	<u>1159</u>
P16 75		45	<u>1200</u>	75		45	<u>1167</u>
P17 80		48	<u>1208</u>	80		48	<u>1175</u>
P18 85		51	<u>1216</u>	85		51	<u>1182</u>
P19 90		54	<u>1222</u>	90		54	<u>1189</u>
P20 95		57	<u>1226</u>	95		57	<u>1195</u>
100		60	<u>1230</u>	100		60	<u>1198</u>
		<u>63</u>	<u>1233</u>			<u>63</u>	<u>1201</u>

FORMATION

TEST

REPORT



Home Office:

Wichita, Kansas 67201

P.O. Box 1599

Phone (316) 262-5861

Company _____
Lease & Well No. _____
Sec. 21 Twp. 23S Rge. 10W Test No. 1 Date 10/24/85

WESTERN TESTING CO. INC.
SUBSURFACE PRESSURE SURVEY

DATE: 10-24-85
CUSTOMER: RUPE OIL COMPANY INC.
WELL: 1 TEST: 1
ELEVATION (KB): 0 FORMATION: LOWER KANSAS CITY
SECTION: 21 TOWNSHIP: 23S
RANGE: 10W COUNTY: RENO STATE: KANSAS
GAUGE SN #10270 RANGE: 4150 CLOCK: 12

TICKET #9228
LEASE: HOWARD
GEOLOGIST: BECCA RUPE

INTERVAL TEST FROM: 3325 FT TO: 3410 FT TOTAL DEPTH: 3410 FT
DEPTH OF SELECTIVE ZONE: FT
PACKER DEPTH: 3320 FT SIZE: 6 5/8 IN Packer DEPTH: 3325 FT SIZE: 6 5/8 IN
PACKER DEPTH: FT SIZE: IN Packer DEPTH: FT SIZE: IN

DRILLING CONTRACTOR: H-30 DRLG. RIG #2
MUD TYPE: STARCH VISCOSITY: 41
WEIGHT: 9.7 WATER LOSS (CC): 12.4
CHLORIDES (P.P.M.): 54000

JARS - MAKE: SERIAL NUMBER:
DID WELL FLOW? NO REVERSED OUT? NO
DRILL COLLAR LENGTH: 120 FT I.D.: 2.25 IN
WEIGHT PIPE LENGTH: FT I.D.: IN
DRILL PIPE LENGTH: 3183 FT I.D.: 3.8 IN
TEST TOOL LENGTH: 22 FT TOOL SIZE: 5 1/2 OD IN
ANCHOR LENGTH: 85 FT SIZE: 5 1/2 OD IN
SURFACE CHOKE SIZE: 3/4 IN BOTTOM CHOKE SIZE: 3/4 IN
MAIN HOLE SIZE: 7 7/8 IN TOOL JOINT SIZE: 4 1/2 XH IN

BLOW: INITIAL FLOW PERIOD WEAK BLOW
BUILDING TO A STRONG BLOW IN
20 MINUTES. FINAL FLOW PERIOD
STRONG BLOW THROUGHOUT PERIOD.

RECOVERED: 60 FT OF: GAS ABOVE FLUID.
RECOVERED: 200 FT OF: GAS CUT MUDDY WATER.
RECOVERED: 180 FT OF: WATER.
RECOVERED: FT OF: CHLORIDES 98000 PPM.
RECOVERED: FT OF:
RECOVERED: FT OF:
RECOVERED: FT OF:
RECOVERED: FT OF:
RECOVERED: FT OF:

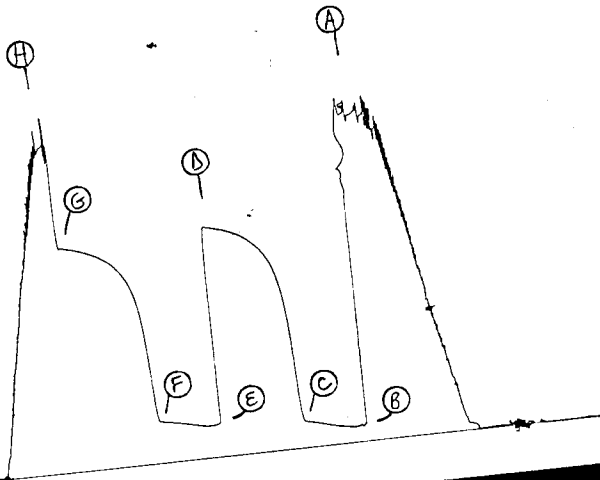
REMARKS:

TIME SET PACKER(S): 10:15 PM TIME STARTED OFF BOTTOM: 1:45 AM
WELL TEMPERATURE: 106 °F
INITIAL HYDROSTATIC PRESSURE: (A) 1793 PSI
INITIAL FLOW PERIOD MIN: 45 (B) 85 PSI TO (C) 141 PSI
INITIAL CLOSED IN PERIOD MIN: 63 (D) 1233 PSI
FINAL FLOW PERIOD MIN: 45 (E) 173 PSI TO (F) 219 PSI
FINAL CLOSED IN PERIOD MIN: 63 (G) 1201 PSI
FINAL HYDROSTATIC PRESSURE (H) 1766 PSI

TKT # 9228

I

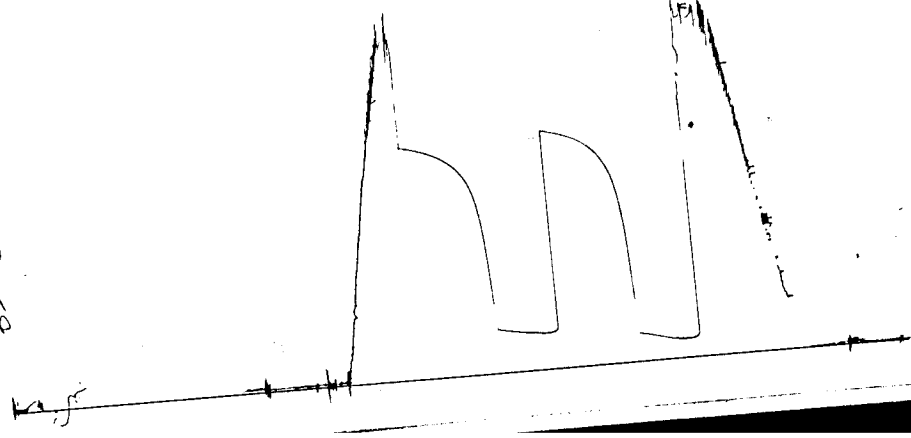
10270



TKT # 9228

0

36.59





WESTERN TESTING CO., INC.
FORMATION TESTING

TICKET No 9229

OK

P. O. BOX 1599 PHONE (316) 262-5861
WICHITA, KANSAS 67201

Elevation _____ Formation Viola Eff. Pay _____ Ft.

District GT. Bend Date 10-26-85 Customer Order No. _____

COMPANY NAME R 180 Rupe Oil Company, Inc.

ADDRESS P.O. Box 2273 Wichita, Ks. 67201

LEASE AND WELL NO. Howard #1 COUNTY Reno STATE Ks. Sec. 21 Twp. 23^s Rge. 10^w

Mail Invoice To #1 Howard Same No. Copies Requested 5
Co. Name _____ Address _____

Mail Charts To Same No. Copies Requested 5
Address _____

Formation Test No. 2 Interval Tested From 3555 ft. to 3643 ft. Total Depth 3643 ft.

Packer Depth 3550 ft. Size 6 5/8 in. Packer Depth _____ ft. Size _____ in.

Packer Depth 3555 ft. Size 6 5/8 in. Packer Depth _____ ft. Size _____ in.

Depth of Selective Zone Set _____

Top Recorder Depth (Inside) 3571 ft. Recorder Number 10270 Cap. 4150

Bottom Recorder Depth (Outside) 3574 ft. Recorder Number 3659 Cap. 4000

Below Straddle Recorder Depth _____ ft. Recorder Number _____ Cap. _____

Drilling Contractor H-30 drlg rig 2 Drill Collar Length 120 I. D. 2.2 in.

Mud Type STARCH Viscosity 42 Weight Pipe Length _____ I. D. _____ in.

Weight 9.6 Water Loss 1.3 cc. Drill Pipe Length 341.3 I. D. 3.8 in.

Chlorides 53000 P.P.M. Test Tool Length 22 ft. Tool Size 5 1/2 in.

Jars: Make _____ Serial Number _____ Anchor Length 88 ft. Size 5 1/2 in.

Did Well Flow? GAS Reversed Out NO Surface Choke Size 3/4 in. Bottom Choke Size 3/4 in.

Main Hole Size 7 7/8 in. Tool Joint Size 4 1/2 x 11 in.

Blow: IF - Strong Blow GAS TO SURFACE in 4 min.

FF - GAS TO SURFACE

Recovered _____ ft. of See GAS Ticket

Recovered 320 ft. of GAS cut mud 10% WATER 15% GAS 75% mud

Recovered _____ ft. of _____

Recovered _____ ft. of _____

Recovered _____ ft. of _____

Chlorides 56000 P.P.M. Sample Jars used 4 Remarks: _____

Time On Location 4:30 ^{AM} P.M. Time Pick Up Tool 5:20 ^{AM} P.M. Time Off Location 11:40 ^{AM} P.M.

Time Set Packer(s) 6:25 ^{AM} P.M. Time Started Off Bottom 9:25 ^{AM} P.M. Maximum Temperature 106°

Initial Hydrostatic Pressure _____ (A) 1931 P.S.I.

Initial Flow Period _____ Minutes 30 (B) 395 P.S.I. to (C) 375 P.S.I.

Initial Closed In Period _____ Minutes 60 (D) 686 P.S.I.

Final Flow Period _____ Minutes 30 (E) 302 P.S.I. to (F) 354 P.S.I.

Final Closed In Period _____ Minutes 60 (G) 686 P.S.I.

Final Hydrostatic Pressure 20135 (H) 1869 P.S.I.

COMPANY TERMS

Western Testing Co., Inc. shall not be liable for damages of any kind to the property or personnel of the one for whom a test is made or for any loss suffered or sustained directly or indirectly through the use of its equipment, of its statements or opinion concerning the results of any test. Tools lost or damaged in the hole shall be paid at cost by the party for whom the test is made.

All charges subject to 12% interest after 60 days from date of invoice. Any expense incurred for collection will be added to the original amount.

Test Approved By [Signature]
Signature of Customer or his authorized representative

Western Representative [Signature] Thank

FIELD INVOICE

Open Hole Test	\$ <u>550</u>
Misrun	\$ _____
Straddle Test	\$ _____
Jars	\$ _____
Selective Zone	\$ _____
Safety Joint	\$ _____
Standby	\$ _____
Evaluation	\$ _____
Extra Packer	\$ _____
Circ. Sub.	\$ _____
Mileage	\$ _____
Fluid Sampler	\$ _____
Extra Charts	\$ _____

WESTERN TESTING CO., INC.

Pressure Data

Date 10-26

Test Ticket No. 9229

Recorder No. 10270

Capacity _____ Location _____ Ft

Clock No. _____ Elevation _____ Well Temperature _____ °F

Point	Pressure	Open Tool	Time Given	Time Computed
A Initial Hydrostatic Mud	<u>1942</u> P.S.I.			
B First Initial Flow Pressure	<u>404</u> P.S.I.	First Flow Pressure	<u>30</u> Mins.	<u>30</u> Mins.
C First Final Flow Pressure	<u>378</u> P.S.I.	Initial Closed-in Pressure	<u>60</u> Mins.	<u>60</u> Mins.
D Initial Closed-in Pressure	<u>687</u> P.S.I.	Second Flow Pressure	<u>30</u> Mins.	<u>30</u> Mins.
E Second Initial Flow Pressure	<u>285</u> P.S.I.	Final Closed-in Pressure	<u>60</u> Mins.	<u>60</u> Mins.
F Second Final Flow Pressure	<u>352</u> P.S.I.			
G Final Closed-in Pressure	<u>687</u> P.S.I.			
H Final Hydrostatic Mud	<u>1859</u> P.S.I.			

PRESSURE BREAKDOWN

First Flow Pressure
Breakdown: 7 Inc.
of 5 mins. and a
final inc. of 0 Min.

Initial Shut-In
Breakdown: 21 Inc.
of 3 mins. and a
final inc. of 0 Min.

Second Flow Pressure
Breakdown: 7 Inc.
of 5 mins. and a
final inc. of 0 Min.

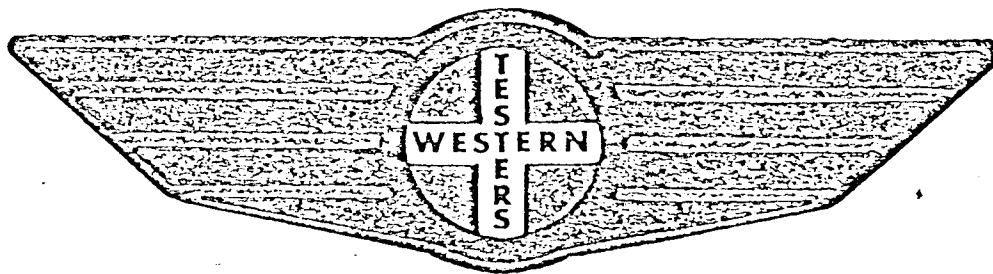
Final Shut-In
Breakdown: 21 Inc.
of 3 mins. and a
final inc. of 0 Min.

Point Mins.	Press.	Point Minutes	Press.	Point Minutes	Press.	Point Minutes	Press.
P 1 0	<u>404</u> OK	0	<u>378</u>	0	<u>285</u> OK	0	<u>352</u>
P 2 5	<u>404</u>	3	<u>641</u>	5	<u>333</u> OK	3	<u>645</u>
P 3 10	<u>370</u>	6	<u>660</u>	10	<u>323</u>	6	<u>660</u>
P 4 15	<u>390</u>	9	<u>668</u>	15	<u>337</u>	9	<u>666</u>
P 5 20	<u>383</u>	12	<u>672</u>	20	<u>343</u>	12	<u>471</u>
P 6 25	<u>379</u>	15	<u>675</u>	25	<u>351</u>	15	<u>674</u>
P 7 30	<u>378</u> OK	18	<u>676</u>	30	<u>352</u> OK	18	<u>675</u>
P 8 35		21	<u>677</u>	35		21	<u>676</u>
P 9 40		24	<u>678</u>	40		24	<u>677</u>
P10 45		27	<u>679</u>	45		27	<u>678</u>
P11 50		30	<u>680</u>	50		30	<u>679</u>
P12 55		33	<u>681</u>	55		33	<u>680</u>
P13 60		36	<u>682</u>	60		36	<u>681</u>
P14 65		39	<u>683</u>	65		39	<u>682</u>
P15 70		42	<u>684</u>	70		42	<u>683</u>
P16 75		45	<u>685</u>	75		45	<u>684</u>
P17 80		48	<u>685</u>	80		48	<u>685</u>
P18 85		51	<u>686</u>	85		51	<u>686</u>
P19 90		54	<u>686</u>	90		54	<u>686</u>
P20 95		57	<u>687</u>	95		57	<u>687</u>
100		60	<u>687</u>	100		60	<u>687</u>

FORMATION

TEST

REPORT



Home Office:

Wichita, Kansas 67201

P.O. Box 1599

Phone (316) 262-5861

WESTERN TESTING CO. INC.
SUBSURFACE PRESSURE SURVEY

DATE: 10-26-85
CUSTOMER: RUPE OIL COMPANY INC.
WELL: 1 TEST: 2
ELEVATION (KB): 0 FORMATION: VIOLA
SECTION: 21 TOWNSHIP: 23S
RANGE: 10W COUNTY: RENO STATE: KANSAS
GAUGE SN #10270 RANGE: 4150 CLOCK: 12

INTERVAL TEST FROM: 3555 FT TO: 3643 FT TOTAL DEPTH: 3643 FT
DEPTH OF SELECTIVE ZONE: FT
PACKER DEPTH: 3555 FT SIZE: 6 5/8 IN PAKER DEPTH: 3555 FT SIZE: 6 5/8 IN
PACKER DEPTH: FT SIZE: IN PAKER DEPTH: FT SIZE: IN

DRILLING CONTRACTOR: H-30 DRLG. RIG #2
MUD TYPE: STARCH VISCOSITY: 42
WEIGHT: 9.6 WATER LOSS (CC): 13
CHLORIDES (P.P.M.): 53000
JARS - MAKE: SERIAL NUMBER:
DID WELL FLOW? GAS REVERSED OUT? NO
DRILL COLLAR LENGTH: 120 FT I.D.: 2.25 IN
WEIGHT PIPE LENGTH: FT I.D.: IN
DRILL PIPE LENGTH: 3413 FT I.D.: 3.8 IN
TEST TOOL LENGTH: 22 FT TOOL SIZE: 5 1/2 OD IN
ANCHOR LENGTH: 88 FT SIZE: 5 1/2 OD IN
SURFACE CHOKE SIZE: 3/4 IN BOTTOM CHOKE SIZE: 3/4 IN
MAIN HOLE SIZE: 7 7/8 IN TOOL JOINT SIZE: 4 1/2 XH IN

BLOW: INITIAL FLOW PERIOD STRONG BLOW;
GAS TO SURFACE IN 4 MINUTES.
FINAL FLOW PERIOD GAS TO SURFACE.

RECOVERED: 320 FT OF: GAS CUT MUD (10% WATER; 15% GAS; 75% MUD).
RECOVERED: FT OF: CHLORIDES 56000 PPM.
RECOVERED: FT OF:
RECOVERED: FT OF:
RECOVERED: FT OF:
RECOVERED: FT OF:
RECOVERED: FT OF:
RECOVERED: FT OF:
RECOVERED: FT OF:

REMARKS: SEE ATTACHED GAS FLOW REPORT.

TIME SET PACKER(S): 6:25 AM TIME STARTED OFF BOTTOM: 9:25 AM
WELL TEMPERATURE: 106 °F
INITIAL HYDROSTATIC PRESSURE: (A) 1942 PSI
INITIAL FLOW PERIOD MIN: 30 (B) 404 PSI TO (C) 378 PSI
INITIAL CLOSED IN PERIOD MIN: 60 (D) 687 PSI
FINAL FLOW PERIOD MIN: 30 (E) 285 PSI TO (F) 352 PSI
FINAL CLOSED IN PERIOD MIN: 60 (G) 687 PSI
FINAL HYDROSTATIC PRESSURE (H) 1859 PSI

WESTERN TESTING CO. INC.
GAS FLOW REPORT

DATE: 10-26-85
 CUSTOMER: RUPE OIL COMPANY INC.
 WELL: 1 TEST: 2
 ELEVATION (KB): 0 FORMATION: VIOLA
 SECTION: 21 TOWNSHIP: 23S
 RANGE: 10W COUNTY: RENO STATE: KANSAS
 GAUGE SN #10270 RANGE: 4150 CLOCK: 12

TIME GAUGE (MIN) TESTER TYPE ORIFICE SIZE PRESSURE (PSI) FLOW DESCRIPTION

PRE FLOW

TIME GAUGE (MIN)	TESTER TYPE	ORIFICE SIZE	PRESSURE (PSI)	FLOW DESCRIPTION
4				GAS TO SURFACE.
5	MERLA	1 IN.	30 PSIG	951000 CFPD
10			45	1269000
15		1 1/4	26	1462000
20			26	1462000
25			26	1462000
30			26	1462000

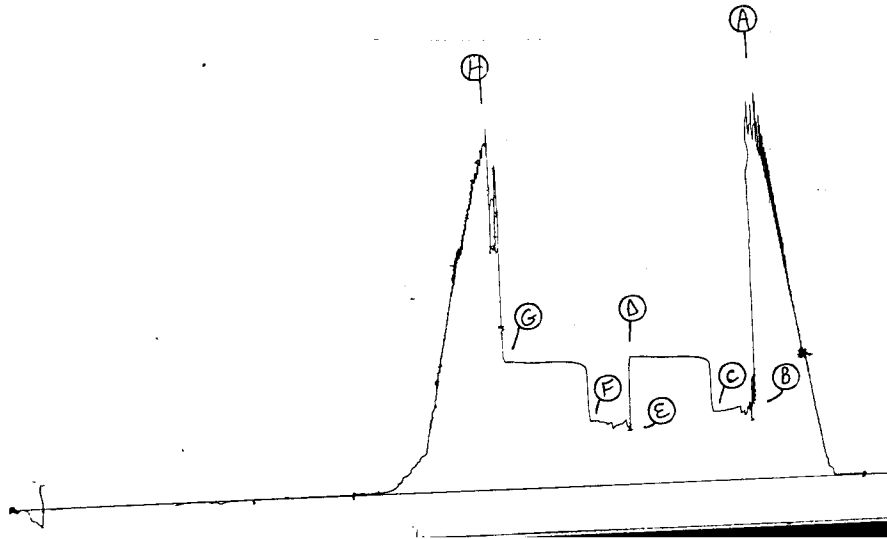
SECOND FLOW

TIME GAUGE (MIN)	TESTER TYPE	ORIFICE SIZE	PRESSURE (PSI)	FLOW DESCRIPTION
5	MERLA	1 IN.	31 PSIG	973000 CFPD
10		1 1/4	24	1388000
15			24	1388000
20			24	1388000
25			25	1421000
30			25	1421000

GAS BOTTLE SN #: 19584
 DATE BOTTLE FILLED: 10-26-85
 DATE TO BE INVOICED:

TKT # 9227

I



TKT # 9229

0

