

15-185-23411

Superior Testers Enterprises, Inc.

R.R. 3, Box 295B, Great Bend, Kansas 67530

(316) 792-6902

27-235-13W

Date 1-10-07 Location 27-235-13W Elevation 1895 County STAFFORD

Company L.D. DRILLING INC. Number of Copies 4

Charts Mailed to 7 SW 26 AVE GREAT BEND KS 67530

Drilling Contractor L.D. DRILLING INC RIG #1

Length Drill Pipe 3500 I.D. Drill Pipe 3.82 Tool Joint Size 4 1/2 X H

Length Weight Pipe _____ I.D. Weight Pipe _____ Tool Joint Size _____

Length Drill Collars _____ I.D. Drill Collars _____ Tool Joint Size _____

Top Packer Depth 3519 Bottom Packer Depth 2524 Number of Packers 2 Packer Size 6 3/4

TESTED FROM 3524 TO 3539 ANCHOR LENGTH 15 TOTAL DEPTH 3539 Hole Size 7 7/8

LEASE & WELL NO. FAIRCHILD "A" #7 FORMATION TESTED D ZONE TEST NO. 1

Mud Weight 8.8 Viscosity 50 Water Loss 8.0 Chlorides - Pits 6800 D.S.T. 48000

Maximum Temp. 106 °F Initial Hydrostatic Pressure (A) 1705 P.S.I. Final Hydrostatic Pressure (H) 1539 P.S.I.

Tool Open I.F.P. from 6:20 m to 6:50 m 30 min

Tool Closed I.C.I.P. from 6:50 m to 7:35 m 45 min

Tool Open F.F.P. from 7:35 m to 8:20 m 45 min

Tool Closed F.C.I.P. from 8:20 m to 9:20 m 60 min

from [B] <u>40</u> P.S.I. to [C] <u>123</u> P.S.I.
[D] <u>1066</u> P.S.I.
from [E] <u>38</u> P.S.I. to [F] <u>59</u> P.S.I.
[G] <u>1134</u> P.S.I.

Initial Blow Fair blow built to 9 inches in 30 minutes NO BLOW BACK

Final Blow FAIR BLOW BUILT TO 8 INCHES IN 25 minutes NO BLOW BACK

Total Feet Recovered 45 of fluid Gravity of Oil _____ Corrected

45 Feet of Very slightly oil cut muddy water % Gas 1 % Oil 50 % Mud 49 % Water

_____ Feet of _____ % Gas _____ % Oil _____ % Mud _____ % Water

_____ Feet of _____ % Gas _____ % Oil _____ % Mud _____ % Water

_____ Feet of CHLORIDES 48000 % Gas _____ % Oil _____ % Mud _____ % Water

_____ Feet of _____ % Gas _____ % Oil _____ % Mud _____ % Water

_____ Feet of _____ % Gas _____ % Oil _____ % Mud _____ % Water

_____ Feet of _____ % Gas _____ % Oil _____ % Mud _____ % Water

_____ Feet of _____ % Gas _____ % Oil _____ % Mud _____ % Water

_____ Feet of _____ % Gas _____ % Oil _____ % Mud _____ % Water

_____ Feet of _____ % Gas _____ % Oil _____ % Mud _____ % Water

Remarks _____ STARTED AT: 3 AM

_____ Tool Layed down: 11 AM

Extra Equipment - Jars NO Safety Joint NO Extra Packer NO Straddle NO Hook Wall NO

Top Recorder No. 91951 Clock No. ELECTRONIC Depth 3535 Cir. Sub _____ Sampler _____

Bottom Recorder No. 10250 Clock No. 47441 Depth 3536 Insurance _____

Price of Job _____

Tool Operator Frank Zemanick

Approved By _____

No 12139

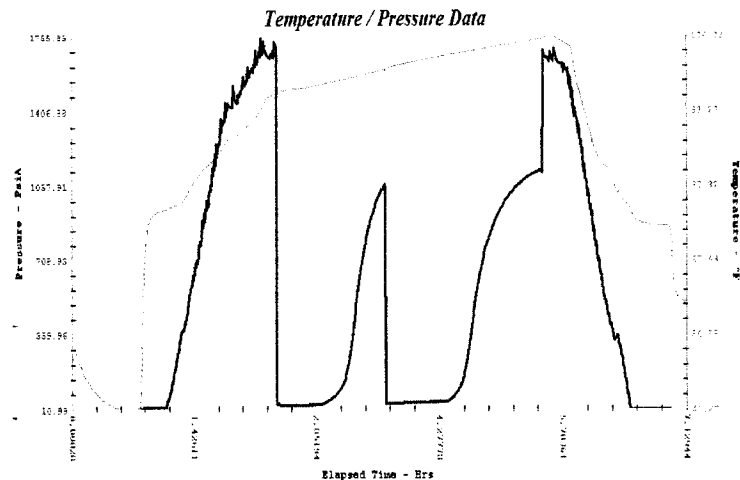
Superior Testers Enterprises, Inc. shall not be liable for damage of any kind to the property or personnel of the one for whom a test is made, of for any loss sustained or sustained, directly or indirectly, through the use of its equipment, or its statements or opinion concerning the results of any test. Tools lost or damaged in the hole shall be paid for at cost by the party for whom the test is made.

SUPERIOR TESTERS ENTERPRISES L.L.C.

DRILL STEM TEST REPORT

1(800)792-6902

GREAT BEND, KANSAS 67530



- | | | |
|---|------------------------------|------|
| 1 | Initial Hydrostatic Pressure | 1705 |
| 2 | Initial Flow Pressure | 40 |
| 3 | Final Initial Flow Pressure | 123 |
| 4 | Initial Shut-In Pressure | 1066 |
| 5 | Initial Final Flow Pressure | 38 |
| 6 | Final Flow Pressure | 59 |
| 7 | Final Shut-In Pressure | 1134 |
| 8 | Final Hydrostatic Pressure | 1539 |

Maximum Temperature 106

GENERAL INFORMATION

COMPANY NAME L.D. DRILLING INC	
TEST DATE 1/10/07	LEASE AND WELL NUMBER FAIRCHILD "A" -#1
SECTION-TOWN-RANGE 27-23S-13W	FORMATION TESTED D ZONE
STATE KANSAS	DRILL STEM TEST NUMBER 1
COUNTY STAFFORD	REPORT NUMBER 12139
ELEVATION GROUND LEVEL 1895	ELEVATION KELLY BUSHINGS 1900
COMPANY REPRESENTATIVE KIM SHOEMAKER	TESTING ENGINEER FRANK ZAMARRIPA

TOOL SETTING INFORMATION

TEST INTERVAL (From) 3524	TOP PACKER DEPTH 3519
TEST INTERVAL (to) 3539	BOTTOM PACKER DEPTH 3524
ANCHOR LENGTH 15	NUMBER OF PACKERS 2
TOTAL DEPTH (ft) 3539	PACKER SIZE 6 3/4
	HOLE SIZE 7 7/8

FLOW TIMES

INITIAL OPEN		FINAL OPEN	
TOOL OPEN (from) 6:20A		TOOL OPEN (from) 7:35	
TOOL OPEN (to) 6:50		TOOL OPEN (to) 8:20	
DURATION (min.) 30		DURATION (min.) 45	
INITIAL SHUT-IN		FINAL SHUT-IN	
TOOL CLOSED (from) 6:50		TOOL CLOSED (from) 8:20	
TOOL CLOSED (to) 7:35		TOOL CLOSED (to) 9:20	
DURATION (min.) 45		DURATION (min.) 60	

INITIAL FLOW FAIR BLOW BUILT TO 9 INCHES IN 30 MINUTES
NO BLOW BACK

FINAL FLOW FAIR BLOW BUILT TO 8 INCHES IN 45 MINUTES
NO BLOW BACK

Company: L.D. DRILLING INC Lease & Well No. FAIRCHILD "A" - #1 Test #: 1 Date: 01-10-07 SEC. 27
 TWP. 23S RGE. 13W

SUPERIOR TESTERS ENTERPRISES L.L.C.

DRILL STEM TEST REPORT

GREAT BEND ,KANSAS 67530 (800)792-6902

GENERAL INFORMATION

COMPANY NAME	L.D. DRILLING INC	LEASE AND WELL NUMBER	FAIRCHILD"A"-#1
TEST DATE	1/10/07	FORMATION TESTED	D ZONE
SECTION-TOWN-RANGE	27-23S-13W	DRILL STEM TEST NUMBER	1
STATE	KANSAS	REPORT NUMBER	12139
COUNTY	STAFFORD	ELEVATION KELLY BUSHINGS	1900
ELEVATION GROUND LEVEL	1895	TESTING ENGINEER	FRANK ZAMARRIPA
COMPANY REPRESENTATIVE	KIM SHOEMAKER		

EXTRA EQUIPMENT

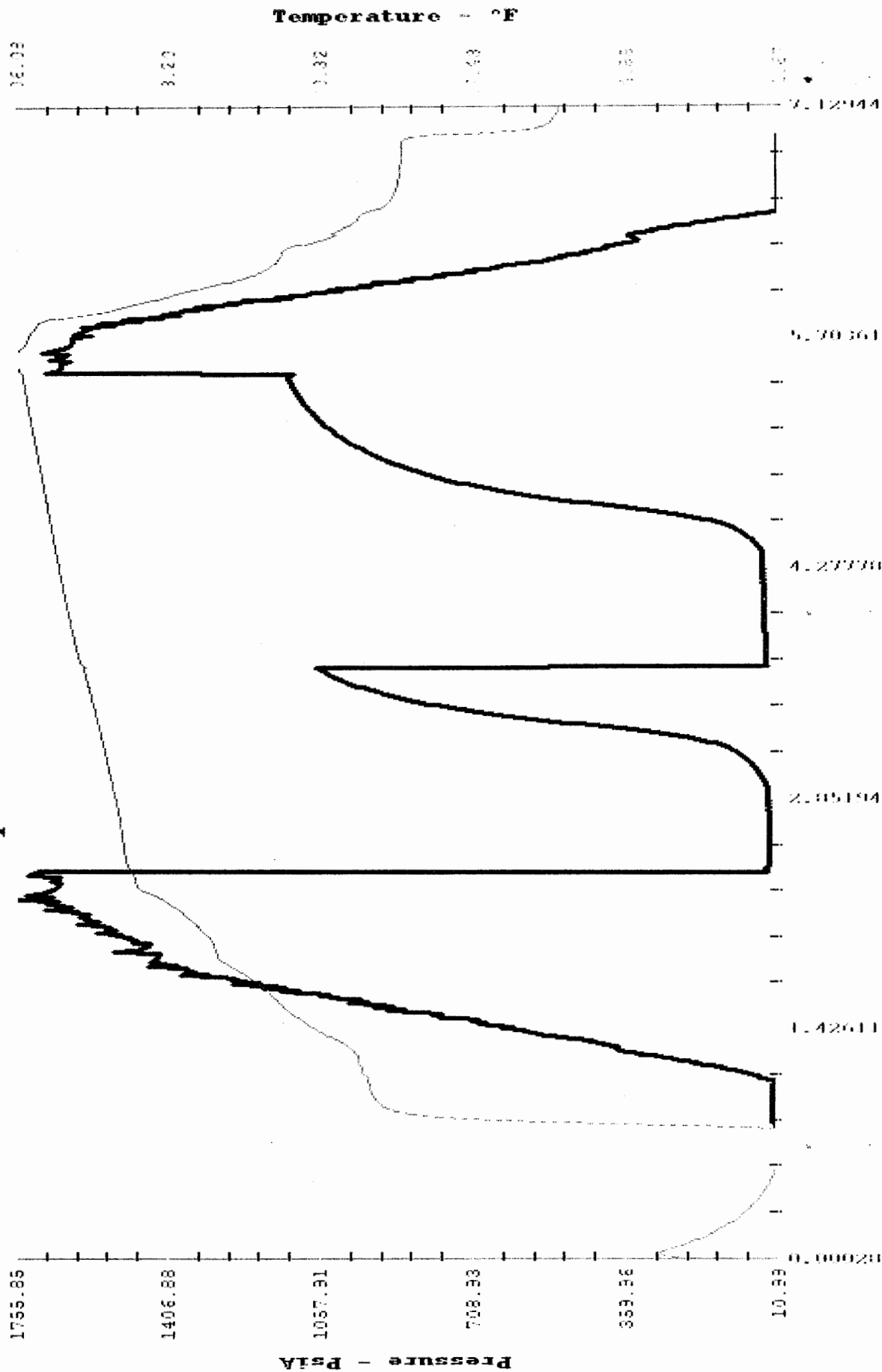
JARS	NO	EXTRA PACKER (3RD)	NO
SAFETY JOINT	NO	EXTRA PACKER (4TH)	NO
ELECTRONIC RECORDER	YES	STRADDLE	NO
CIRCULATING SUB	NO	HOOK WALL	NO
		SAMPLER	NO
	48 MILES ROUND TRIP FROM	GREAT BEND	
TOP RECORDER DEPTH	3535	BOTTOM RECORDER DEPTH	3536
RECORDER NUMBER	91951	RECORDER NUMBER	10250

WELL INFORMATION

DRILLING CONTRACTOR	L.D. DRILLING RIG #1	DRILL COLLAR LENGTH	
DRILL PIPE LENGTH	3506	DRILL COLLAR I.D.	2.25
DRILL PIPE I.D.	3.8	TOOL JOINT SIZE	4 1/2 X.H.
TOOL JOINT SIZE	4 1/2 X.H.		

COMMENTS

Temperature / Pressure Data



Elapsed Time - Hrs



DIAMOND TESTING

P.O. Box 157
HOISINGTON, KANSAS 67544
(620) 653-7550 • (800) 542-7313
STC 21108.D408

Company L. D. Drilling, Inc. Lease & Well No. Fairchild "A" No. 1
Elevation 1895KB Formation Simpson Effective Pay -- Ft. Ticket No. 2011
Date 1-11-07 Sec. 27 Twp. 23S Range 13W County Stafford State Kansas
Test Approved By Kim Shoemaker Diamond Representative John C. Riedl

Formation Test No. 2 Interval Tested from 3,890 ft. to 3,915 ft. Total Depth 3,915 ft.
Packer Depth 3,885 ft. Size 6 3/4 in. Packer Depth -- ft. Size -- in.
Packer Depth 3,890 ft. Size 6 3/4 in. Packer Depth -- ft. Size -- in.
Depth of Selective Zone Set ft.

Top Recorder Depth (Inside) 3,893 ft. Recorder Number 21108 Cap. 5,000 psi
Bottom Recorder Depth (Outside) 3,912 ft. Recorder Number 11017 Cap. 4,000 psi
Below Straddle Recorder Depth ft. Recorder Number Cap. psi

Drilling Contractor L. D. Drilling, Inc. - Rig 1 Drill Collar Length -- ft. I.D. -- in.
Mud Type Chemical Viscosity 44 Weight Pipe Length -- ft. I.D. -- in.
Weight 9.0 Water Loss 12.0 cc. Drill Pipe Length 3,870 ft. I.D. 3 1/2 in.
Chlorides 11,200 P.P.M. Test Tool Length 20 ft. Tool Size 3 1/2 - IE in.
Jars: Make Bowen Serial Number Not Run Anchor Length 25 ft. Size 4 1/2 - FH in.
Did Well Flow? No Reversed Out No Surface Choke Size 1 in. Bottom Choke Size 5/8 in.
Main Hole Size 7 7/8 in. Tool Joint Size 4 1/2 - XH in.

Blow: 1st Open: Weak blow. Dead in 11 mins.
2nd Open: No blow.

Recovered 5 ft. of drilling mud = .051300 bbls.

Recovered ft. of
Recovered ft. of
Recovered ft. of
Recovered ft. of

Remarks

Time Set Packer(s) 3:25 ^{XXM.} P.M. Time Started Off Bottom 3:55 ^{XXM.} P.M. Maximum Temperature 99°
Initial Hydrostatic Pressure (A) 1918 P.S.I.
Initial Flow Period Minutes 15 (B) 34 P.S.I. to (C) 33 P.S.I.
Initial Closed In Period Minutes 15 (D) 37 P.S.I.
Final Flow Period Minutes -- (E) -- P.S.I. to (F) -- P.S.I.
Final Closed In Period Minutes -- (G) -- P.S.I.
Final Hydrostatic Pressure (H) 1866 P.S.I.

GENERAL INFORMATION

Client Information:

Company: L D DRILLING INC

Contact: L D DAVIS

Phone: Fax: e-mail:

Site Information:

Contact: KIM SHOEMAKER

Phone: Fax: e-mail:

Well Information:

Name: FAIRCHILD "A" #1

Operator: D DRILLING INC

Location-Downhole: DST #1 3890 TO 3915

Location-Surface: S27/23S/13W STAFFORD COUNTY

Test Information:

Company: DIAMOND TESTING

Representative: JOHN RIEDL

Supervisor: KIM SHOEMAKER

Test Type: CONVENTIONAL Job Number: D408

Test Unit: 2

Start Date: 2007/01/11 Start Time: 13:45:00

End Date: 2007/01/11 End Time: 17:15:00

Report Date: 2007/01/11 Prepared By: JOHN RIEDL

Qualified By: KIM SHOEMAKER

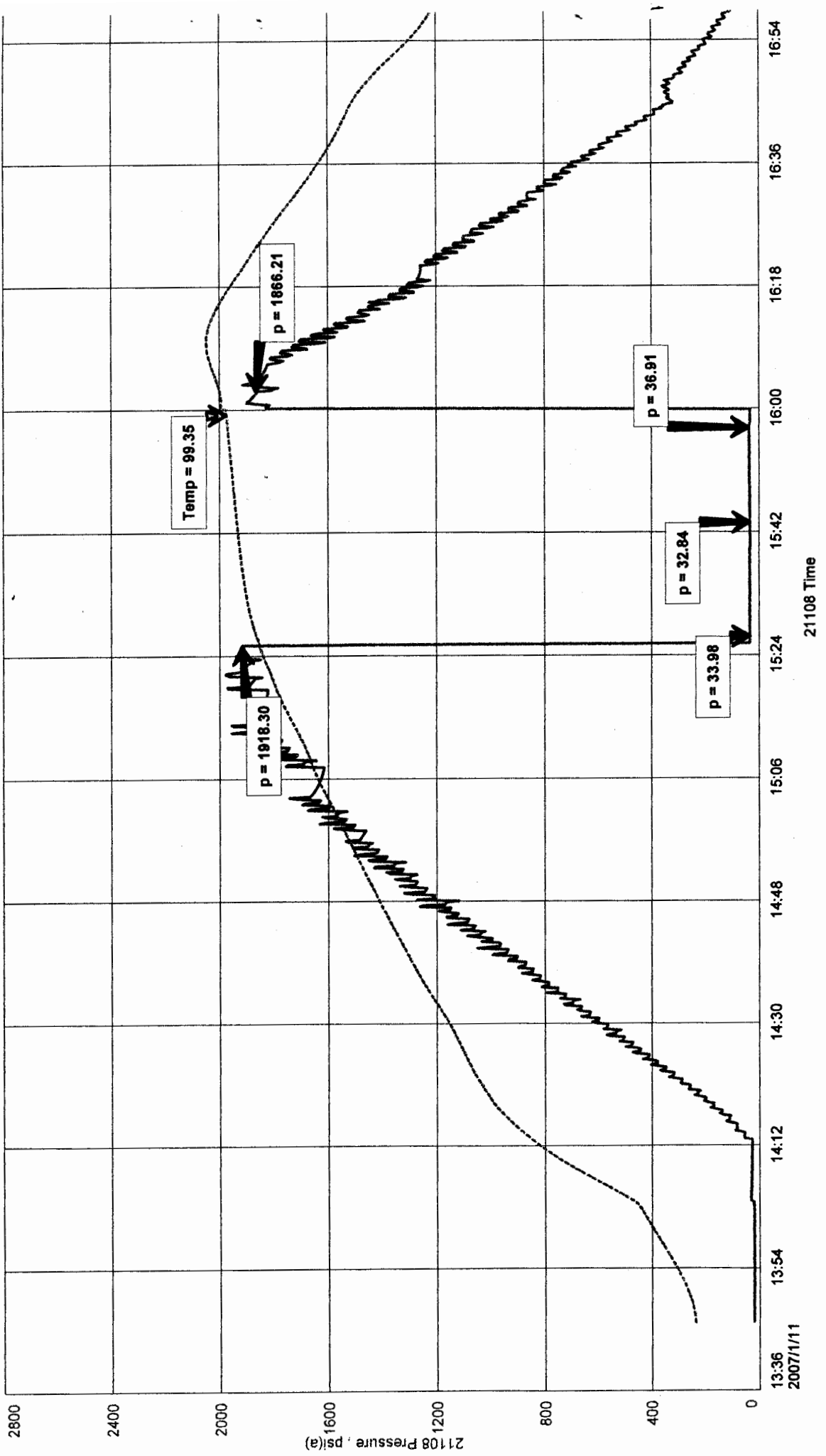
Remarks:

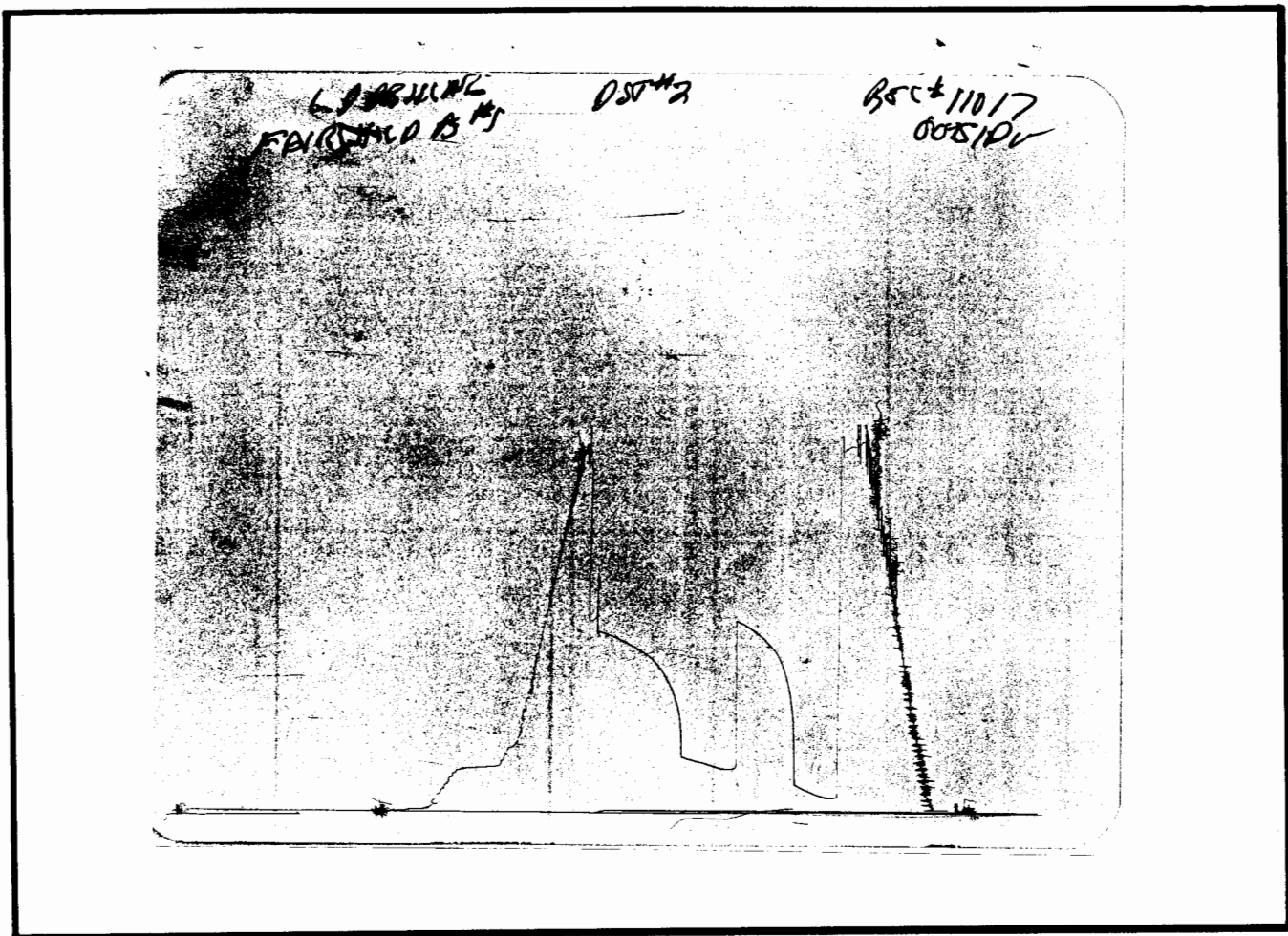
RECOVERY: 5' DRILLING MUD

L D DRILLING INC
DST #1 3890 TO 3915
Start Test Date: 2007/01/11
Final Test Date: 2007/01/11

FAIRCHILD "A" #1
Formation: SIMPSON
Job Number: D408

FAIRCHILD "A" #1





This is an actual photograph of recorder chart.

POINT	PRESSURE		Elec. Office Reading	PSI
	Field Reading			
(A) Initial Hydrostatic Mud	1918	1918		PSI
(B) First Initial Flow Pressure.....	34	34		PSI
(C) First Final Flow Pressure	33	33		PSI
(D) Initial Closed-in Pressure	37	37		PSI
(E) Second Initial Flow Pressure	--	--		PSI
(F) Second Final Flow Pressure.....	--	--		PSI
(G) Final Closed-in Pressure.....	--	--		PSI
(H) Final Hydrostatic Mud	1866	1866		PSI



DIAMOND TESTING

P.O. Box 157

HOISINGTON, KANSAS 67544

(620) 653-7550 • (800) 542-7313

STC 21108.D 409

Company L. D. Drilling, Inc. Lease & Well No. Fairchild "A" No. 1
 Elevation 1895KB Formation Simpson Effective Pay -- Ft. Ticket No. 2012
 Date 1-12-07 Sec. 27 Twp. 23S Range 13W County Stafford State Kansas
 Test Approved By Kim Shoemaker Diamond Representative John C. Riedl

Formation Test No. 3 Interval Tested from 3,892 ft. to 3,935 ft. Total Depth 3,935 ft.
 Packer Depth 3,887 ft. Size 6 3/4 in. Packer Depth -- ft. Size -- in.
 Packer Depth 3,892 ft. Size 6 3/4 in. Packer Depth -- ft. Size -- in.
 Depth of Selective Zone Set ft.

Top Recorder Depth (Inside) 3,895 ft. Recorder Number 21108 Cap. 5,000 psi
 Bottom Recorder Depth (Outside) 3,932 ft. Recorder Number 11017 Cap. 4,000 psi
 Below Straddle Recorder Depth ft. Recorder Number Cap. psi

Drilling Contractor L. D. Drilling, Inc. - Rig 1 Drill Collar Length -- ft. I.D. -- in.
 Mud Type Chemical Viscosity 46 Weight Pipe Length -- ft. I.D. -- in.
 Weight 9.0 Water Loss 11.0 cc. Drill Pipe Length 3,872 ft. I.D. 3 1/2 in.
 Chlorides 12,000 P.P.M. Test Tool Length 20 ft. Tool Size 3 1/2 - IE in.
 Jars: Make Bowen Serial Number Not Run Anchor Length 43 ft. Size 4 1/2 - FH in.
 Did Well Flow? No Reversed Out No Surface Choke Size 1 in. Bottom Choke Size 5/8 in.
 Main Hole Size 7 7/8 in. Tool Joint Size 4 1/2 - XH in.

Blow: 1st Open: Fair, 4 in., blow.
2nd Open: Fair, 3 in., blow decreasing to 1 1/2 ins.

Recovered 210 ft. of very slightly oil cut watery mud = 2.154600 bbls. (Grind out: 1%-oil; 10%-water; 89%-mud)

Recovered 370 ft. of water with strong sulfur content = 3.796200 bbls. (Chlorides: 20,000 Ppm)

Recovered 580 ft. of TOTAL FLUID = 5.950800 bbls.

Recovered ft. of

Recovered ft. of

Remarks

Time Set Packer(s)	<u>2:25</u>	<u>A.M.</u>	Time Started Off Bottom	<u>5:25</u>	<u>A.M.</u>	Maximum Temperature	<u>122°</u>
Initial Hydrostatic Pressure			(A)	<u>1910</u>	P.S.I.		
Initial Flow Period	Minutes	<u>30</u>	(B)	<u>62</u>	P.S.I. to (C)	<u>195</u>	P.S.I.
Initial Closed In Period	Minutes	<u>45</u>	(D)	<u>1009</u>	P.S.I.		
Final Flow Period	Minutes	<u>45</u>	(E)	<u>213</u>	P.S.I. to (F)	<u>325</u>	P.S.I.
Final Closed In Period	Minutes	<u>60</u>	(G)	<u>942</u>	P.S.I.		
Final Hydrostatic Pressure			(H)	<u>1827</u>	P.S.I.		

GENERAL INFORMATION

Client Information:

Company: L D DRILLING INC.

Contact: L D DAVIS

Phone: Fax: e-mail:

Site Information:

Contact: KIM SHOEMAKER

Phone: Fax: e-mail:

Well Information:

Name: FAIRCHILD "A" #1

Operator: L D DRILLING INC

Location-Downhole: DST #3 3892 TO 3935

Location-Surface: S27/23S/13W STAFFORD COUNTY

Test Information:

Company: DIAMOND TESTING

Representative: JOHN RIEDL

Supervisor: KIM SHOEMAKER

Test Type: CONVENTIONAL Job Number: D409

Test Unit: 2

Start Date: 2007/01/12 Start Time: 00:30:00

End Date: 2007/01/12 End Time: 08:30:00

Report Date: 2007/01/12 Prepared By: JOHN RIEDL

Qualified By: KIM SHOEMAKER

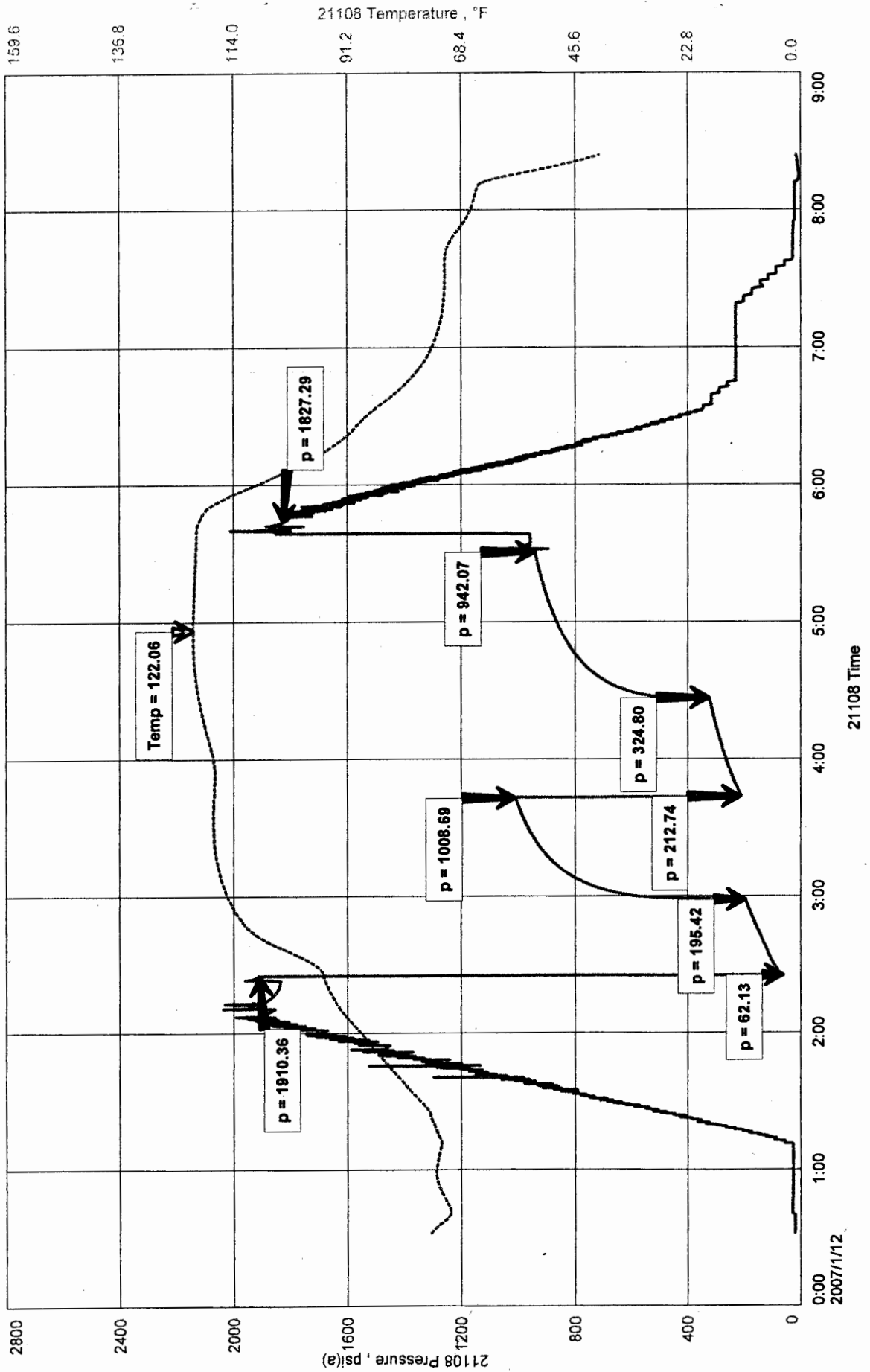
Remarks:

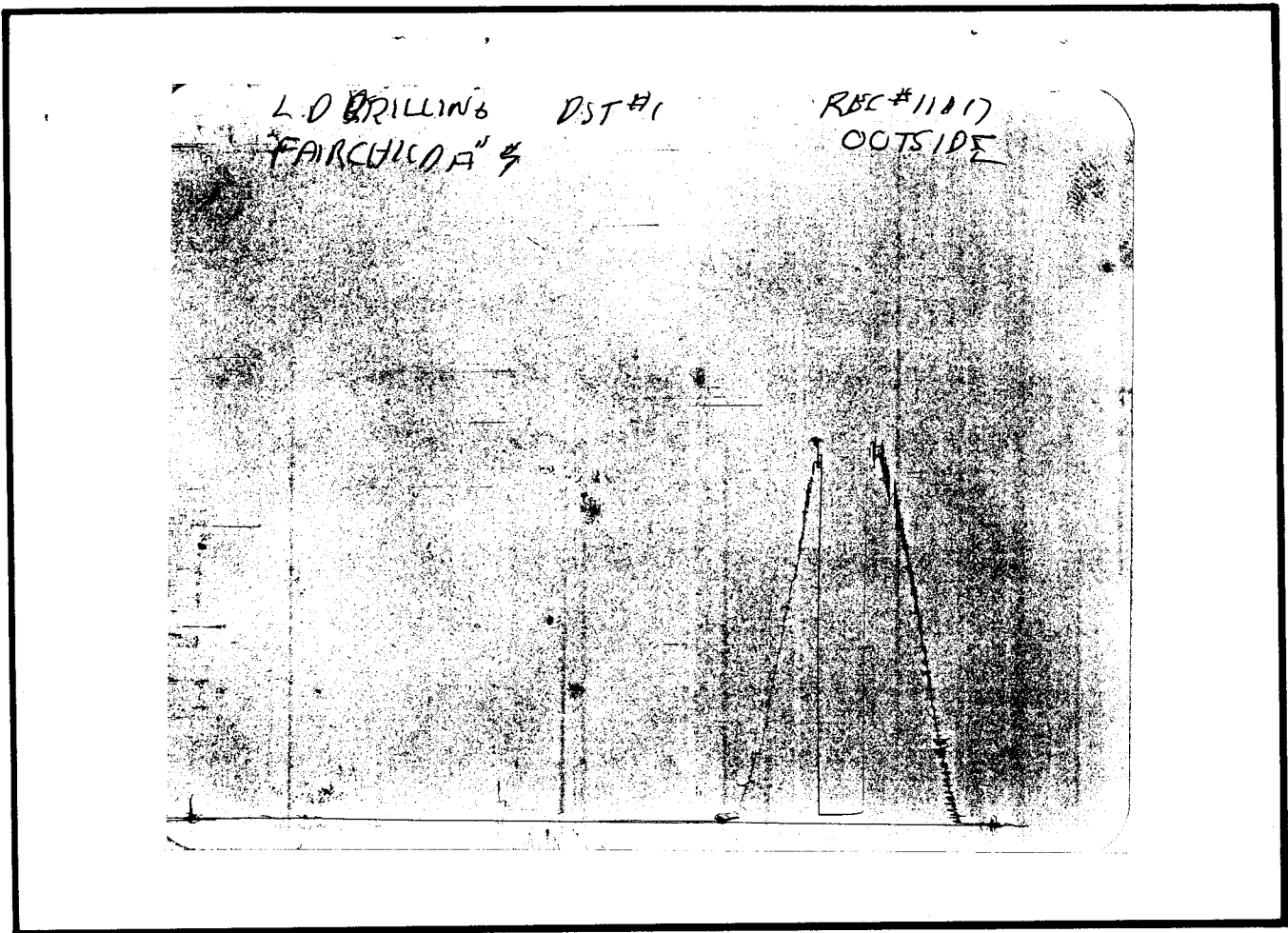
RECOVERY: 210' VSLOCWM
370' WATER (STRONG SULFUR CONTENT)
TOTAL FLUID RECOVERY 580'

FAIRCHILD "A" #1
Formation: SIMPSON
Job Number: D409

L D DRILLING INC.
DST #3 3892 TO 3935
Start Test Date: 2007/01/12
Final Test Date: 2007/01/12

FAIRCHILD "A" #1





This is an actual photograph of recorder chart.

POINT	PRESSURE Elec.		
	Field Reading	Office Reading	
(A) Initial Hydrostatic Mud	1910	1910	PSI
(B) First Initial Flow Pressure.....	62	62	PSI
(C) First Final Flow Pressure	195	195	PSI
(D) Initial Closed-in Pressure	1009	1009	PSI
(E) Second Initial Flow Pressure	213	213	PSI
(F) Second Final Flow Pressure.....	325	325	PSI
(G) Final Closed-in Pressure.....	942	942	PSI
(H) Final Hydrostatic Mud	1827	1827	PSI



DIAMOND TESTING

P.O. Box 157
HOISINGTON, KANSAS 67544
(620) 653-7550 • (800) 542-7313
STC 21108.D 410

Company L. D. Drilling, Inc. Lease & Well No. Fairchild "A" No. 1

Elevation 1895KB Formation Arbuckle Effective Pay -- Ft. Ticket No. 2013

Date 1-12-07 Sec. 27 Twp. 23S Range 13W County Stafford State Kansas

Test Approved By Kim Shoemaker Diamond Representative John C. Riedl

Formation Test No. 4 Interval Tested from 3,942 ft. to 3,952 ft. Total Depth 3,952 ft.

Packer Depth 3,937 ft. Size 6 3/4 in. Packer Depth -- ft. Size -- in.

Packer Depth 3,942 ft. Size 6 3/4 in. Packer Depth -- ft. Size -- in.

Depth of Selective Zone Set ft.

Top Recorder Depth (Inside) 3,945 ft. Recorder Number 21108 Cap. 5,000 psi

Bottom Recorder Depth (Outside) 3,949 ft. Recorder Number 11017 Cap. 4,000 psi

Below Straddle Recorder Depth ft. Recorder Number Cap. psi

Drilling Contractor L. D. Drilling, Inc. - Rig 1 Drill Collar Length -- ft. I.D. -- in.

Mud Type Chemical Viscosity 48 Weight Pipe Length -- ft. I.D. -- in.

Weight 9.0 Water Loss 20.0 cc. Drill Pipe Length 3,922 ft. I.D. 3 1/2 in.

Chlorides 16,000 P.P.M. Test Tool Length 20 ft. Tool Size 3 1/2 - JF in.

Jars: Make Bowen Serial Number Not Run Anchor Length 10 ft. Size 4 1/2 - FH in.

Did Well Flow? No Reversed Out No Surface Choke Size 1 in. Bottom Choke Size 5/8 in.

Main Hole Size 7 7/8 in. Tool Joint Size 4 1/2 - XH in.

Blow: 1st Open: Weak, 1/2 in., blow throughout.

2nd Open: Weak surface blow throughout.

Recovered 60 ft. of muddy water (with sulfur odor) = .615600 bbls. (Grind out: 30%-mud; 70%-water)

Chlorides: 26,000 Ppm

Recovered ft. of

Recovered ft. of

Recovered ft. of

Recovered ft. of

Remarks Mechanical Recorder Chart Stopped

Time Set Packer(s) 5:52 ~~XXX~~ P.M. Time Started Off Bottom 7:52 ~~XXX~~ P.M. Maximum Temperature 117°

Initial Hydrostatic Pressure (A) 1957 P.S.I.

Initial Flow Period Minutes 30 (B) 35 P.S.I. to (C) 41 P.S.I.

Initial Closed In Period Minutes 30 (D) 1283 P.S.I.

Final Flow Period Minutes 30 (E) 45 P.S.I. to (F) 53 P.S.I.

Final Closed In Period Minutes 30 (G) 1242 P.S.I.

Final Hydrostatic Pressure (H) 1876 P.S.I.

GENERAL INFORMATION

Client Information:

Company: L D DRILLING INC

Contact: L D DAVIS

Phone: Fax: e-mail:

Site Information:

Contact: KIM SHOEMAKER

Phone: Fax: e-mail:

Well Information:

Name: FAIRCHILD "A" #1

Operator: L D DRILLING INC

Location-Downhole: DST #4 3942 TO 3952

Location-Surface: S27/23S/13W STAFFORD COUNTY

Test Information:

Company: DIAMOND TESTING

Representative: jJOHN RIEDL

Supervisor: KIM SHOEMAKER

Test Type: CONVENTIONAL Job Number: D410

Test Unit: 2

Start Date: 2007/01/12 Start Time: 15:52:00

End Date: 2007/01/12 End Time: 21:45:00

Report Date: 2007/01/12 Prepared By: JOHN RIEDL

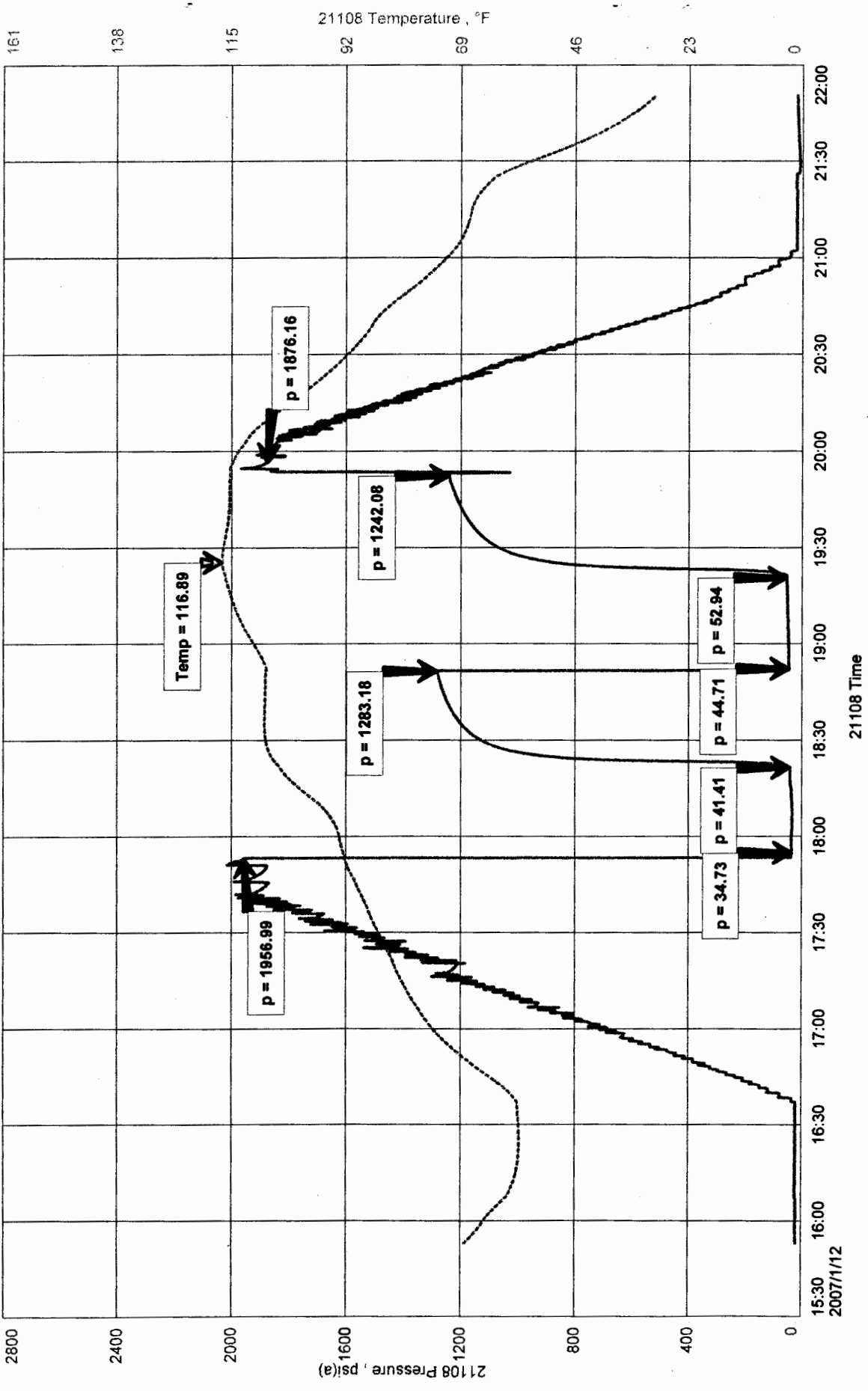
Remarks: Qualified By: KIM SHOEMAKER

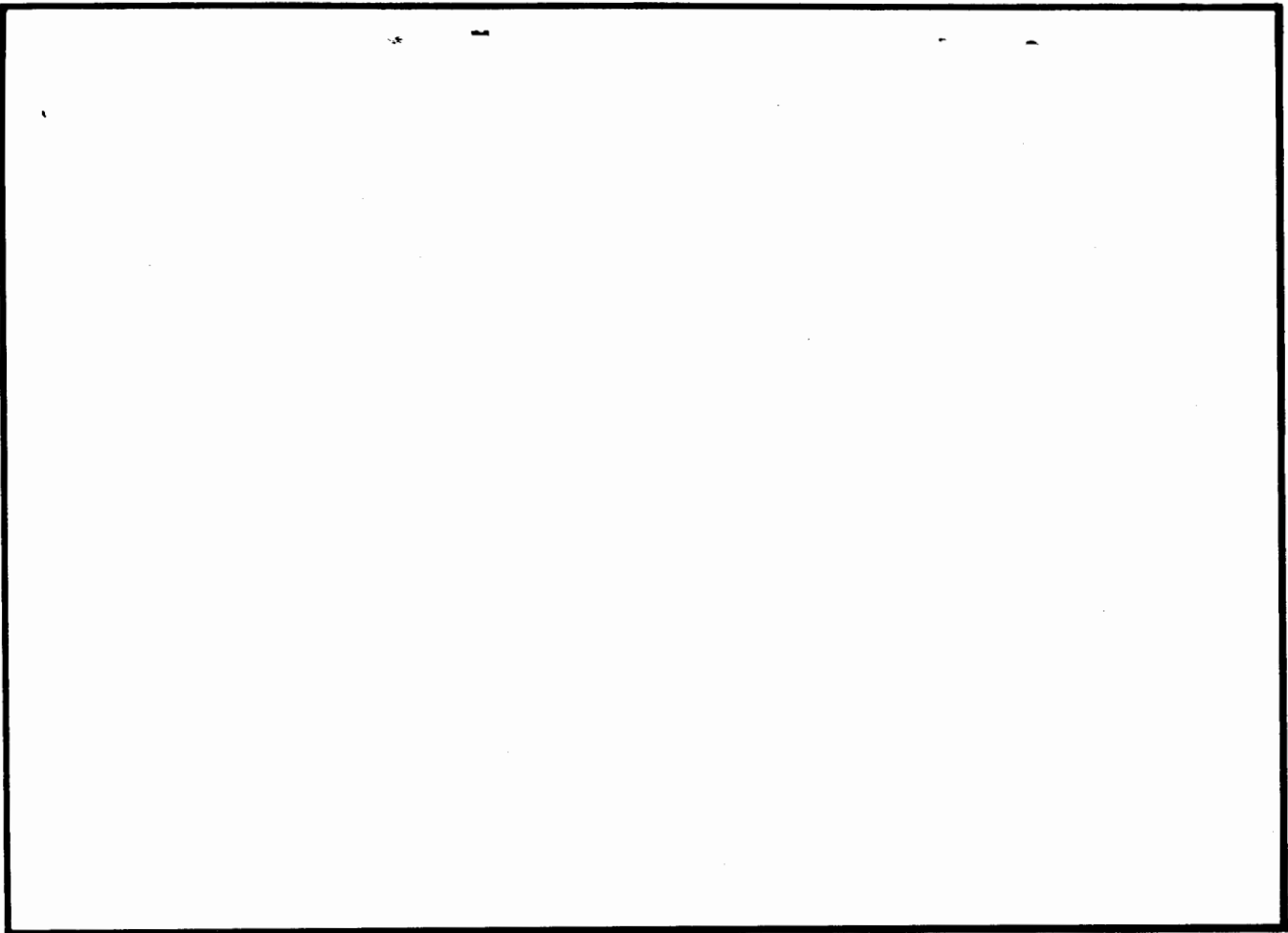
RECOVERY: 60' MUDDY SULFUR WATER

FAIRCHILD "A" #1
 Formation: ARBUCKLE
 Job Number: D410

L D DRILLING INC
 DST #4 3942 TO 3952
 Start Test Date: 2007/01/12
 Final Test Date: 2007/01/12

FAIRCHILD "A" #1





This is an actual photograph of recorder chart.

POINT	PRESSURE		Elec. Office Reading
	Field Reading		
(A) Initial Hydrostatic Mud	1957	1957	PSI
(B) First Initial Flow Pressure.....	35	35	PSI
(C) First Final Flow Pressure	41	41	PSI
(D) Initial Closed-in Pressure	1283	1283	PSI
(E) Second Initial Flow Pressure	45	45	PSI
(F) Second Final Flow Pressure.....	53	53	PSI
(G) Final Closed-in Pressure.....	1242	1242	PSI
(H) Final Hydrostatic Mud	1876	1876	PSI