

CONFIDENTIAL

State Geological Survey

COMPLETION REPORT AND

WICHITA BRANCH

DRILLER'S LOG

S. 21 T. 23 R. 14 XXX W

API No. 15 - 185 - 21,212  
County Number

Loc. NW SE SE  
County Stafford

Operator  
Kansas Oil Corporation

Address  
250 N. Rock Road, Suite 300, Wichita, KS 67208

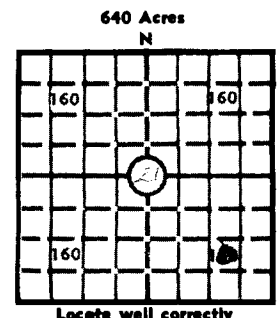
Well No. #1 Lease Name Beaver

Footage Location  
990 feet from XMK (S) line 990 feet from (E) OXK line

Principal Contractor Spartan Geologist Robert Laymon

Spud Date 1/22/81 Date Completed 4/8/81 Total Depth 4060' P.B.T.D.

Directional Deviation None Oil and/or Gas Purchaser Clear Creek



Elev.: Gr. 1940  
DF 1946 KB 1948

CASING RECORD

Report of all strings set — surface, intermediate, production, etc.

Purpose of string	Size hole drilled	Size casing set (in O.D.)	Weight lbs/ft.	Setting depth	Type cement	Sacks	Type and percent additives
Surface		8 5/8"		233'	common	175	3% gel 2% CaCl
Production		4 1/2"		3793	60-40 posmix	200	10% salt & 10 Barrels saltflush

LINER RECORD

PERFORATION RECORD

Top, ft.	Bottom, ft.	Sacks cement	Shots per ft.	Size & type	Depth interval
			2		3694-98

Size	Setting depth	Packer set at

ACID, FRACTURE, SHOT, CEMENT SQUEEZE RECORD

Amount and kind of material used	Depth interval treated
Acid w/250 gal. of 15% mud acid. Treated @ 900 psi @ .5 BPM. Swab & test.	3694-98

RELEASED

Date: MAY 28 1982

INITIAL PRODUCTION

FROM CONFIDENTIAL

Date of first production 4/26/81	Producing method (flowing, pumping, gas lift, etc.) pumping
RATE OF PRODUCTION PER 24 HOURS Oil 78 BOPD Gas N/A Water N/A Gas-oil ratio N/A	Producing interval (s) 3694-98
Disposition of gas (vented, used on lease or sold) N/A	

INSTRUCTIONS: As provided in KCC Rule 82-2-125, within 90 days after completion of a well, one completed copy of this Drillers Log shall be transmitted to the State Geological Survey of Kansas, 4150 Monroe Street, Wichita, Kansas 67209. Copies of this form are available from the Conservation Division, State Corporation Commission, 245 No. Water, Wichita, Kansas 67202. Phone AC 316-522-2206. If confidential custody is desired, please note Rule 82-2-125. Drillers Logs will be on open file in the Oil and Gas Division, State Geological Survey of Kansas, Lawrence, Kansas 66044.

Operator  
Kansas Oil Corporation

DESIGNATE TYPE OF COMP.: OIL, GAS,  
DRY HOLE, SWDW, ETC.:

Well No. #1      Lease Name Beaver      Oil

S 21 T 23 R 14 W

**WELL LOG**

Show all important zones of porosity and contents thereof; cored intervals, and all drill-stem tests, including depth interval tested, cushion used, time tool open, flowing and shut-in pressures, and recoveries.

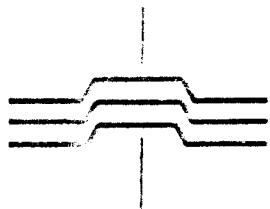
SHOW GEOLOGICAL MARKERS, LOGS RUN, OR OTHER DESCRIPTIVE INFORMATION.

FORMATION DESCRIPTION, CONTENTS, ETC.	TOP	BOTTOM	NAME	DEPTH
Heebner	3420			
Douglas	3457			
Brown Lime	3553			
Lansing	3564			
B/KC	3819			
Miss.	3890			
Simpson	4004			
Arbuckle	4040			
<p>DST#1, 3680-99, 45-60-45-60, Rec. 1800' muddy water, 240' O &amp; GCM, (25% G, 15% O, 60%M) IHP 881-860 psi., FSIP 1341 psi., test inconclusive due to hole in drill collar.</p> <p>DST#2, 3688-99, 30-60-30-60, Rec 460' frothy oil, IHP 1929 psi., IFP 107-107 psi., ISIP 1064 psi., FFP 133-133 psi., FSIP 1021 psi, FHP 1918 psi.</p>				

USE ADDITIONAL SHEETS, IF NECESSARY, TO COMPLETE WELL RECORD.

Date Received	<i>Michael R. Bryan</i>
	Signature
	Michael R. Bryan
	Title
	6/12/81
	Date

# SPARTAN DRILLING CORPORATION



21-23-14W

February 2, 1981

State Geological Survey  
WICHITA, BRANCH

## DRILLERS LOG

RE: Beaver #1  
NW/SE/SE  
Sec. 21 T23-R14W  
Stafford County, KS

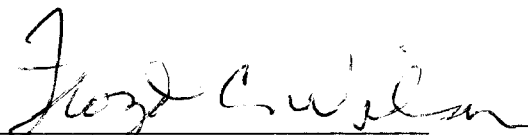
OPERATOR: Kansas Oil Corporation  
CONTRACTOR: Spartan Drilling Corporation  
COMMENCED: 1-22-81  
COMPLETED: 2-1-81

Surface Pipe 242' 12 $\frac{1}{4}$ " w/180 2% Gel 3% cc

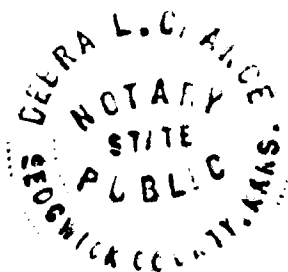
0	256	Sand - Shale
256	1295	Shale - Sand
1295	1873	Shale
1873	2979	Shale & Lime
2979	3730	Lime & Shale
3730	4060	Lime - Shale


We certify that the above and foregoing is a true and correct copy of the log on the Beaver #1 in Stafford County, Kansas.

SPARTAN DRILLING CORPORATION

  
Floyd C. Wilson  
President

Subscribed and sworn to before me this 2nd day of February, 1981.



  
Debra L. Chance  
Notary Public