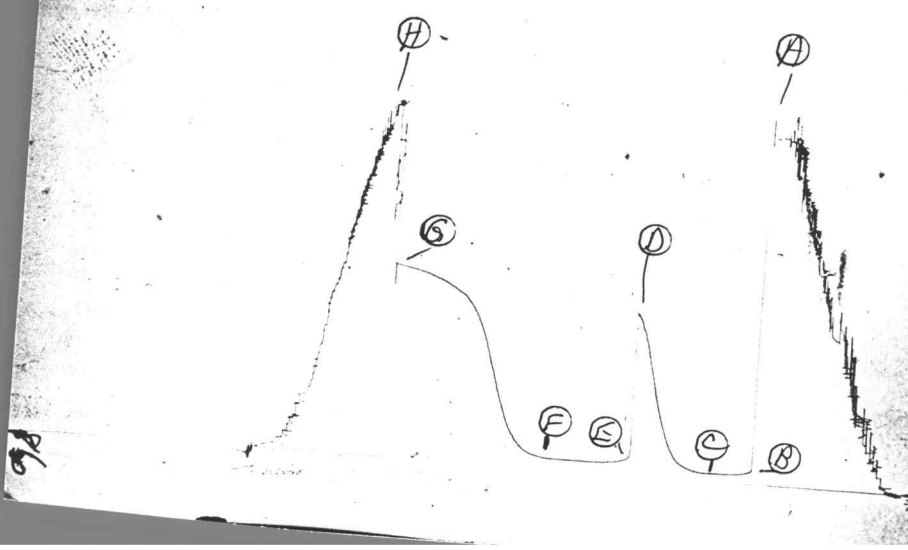


TKA 12976

15

I

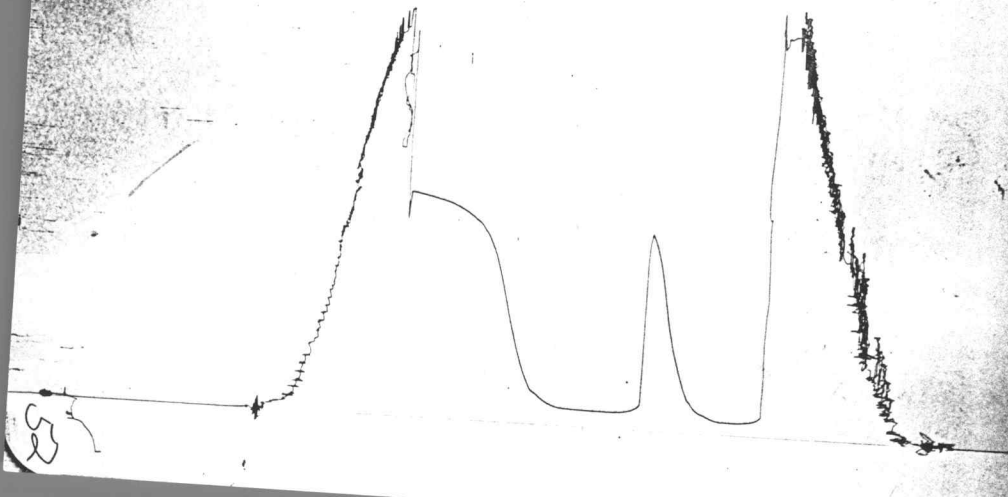


96

TKA 12976

15

0



FORMATION TEST REPORT



Home Office:

Wichita, Kansas 67201

P.O. Box 1599

Phone (316) 262-5861

WESTERN TESTING CO. INC.
SUBSURFACE PRESSURE SURVEY

DATE : 6-26-87
CUSTOMER : GLOBAL NATURAL RESOURCES CORP
WELL : 2"A"-20 TEST: 1
ELEVATION : -
SECTION : 20
RANGE : 32W COUNTY : FINNEY
GAUGE SN# : 3086 RANGE : 4500
TICKET : 12976
LEASE : WALKER
GEOLOGIST : MARK ROHR
FORMATION : MARMATON
TOWNSHIP : 23S
STATE : KANSAS
CLOCK : 12

INTERVAL FROM : 4411 TO : 4436 TOTAL DEPTH : 4436
DEPTH OF SELECTIVE ZONE :
PACKER DEPTH : 4406 SIZE : 6.63
PACKER DEPTH : 4411 SIZE : 6.63
PACKER DEPTH : SIZE :
PACKER DEPTH : SIZE :

DRILLING CON. : BEREDCO RIG #4
MUD TYPE : CHEMICAL VISCOSITY : 45
WEIGHT : 9.1 WATER LOSS (CC) : 7.6
CHLORIDES (PPM) : 1200
JARS-MAKE : WTC SERIAL NUMBER : 408
DID WELL FLOW ? : NO REVERSED OUT ? : NO

DRILL COLLAR LENGTH : 650 FT I.D. inch : 2.25
WEIGHT PIPE LENGTH : 0 FT I.D. inch : 0.00
DRILL PIPE LENGTH : 3728 FT I.D. inch : 3.80
TEST TOOL LENGTH : 33 FT TOOL SIZE : 5.50
ANCHOR LENGTH : 25 FT ANCHOR SIZE : 5.50
SURFACE CHOKE SIZE : .75 IN BOTTOM CHOKE SIZE : .75
MAIN HOLE SIZE : 7.875 IN TOOL JOINT SIZE : 4.5 FH

BLOW COMMENT #1 : WEAK BLOW THROUGHOUT THE INITIAL FLOW.
BLOW COMMENT #2 : FAIR BLOW THROUGHOUT THE FINAL FLOW.
BLOW COMMENT #3 :
BLOW COMMENT #4 :

RECOVERED : 110 FT OF: GAS CUT MUDDY OIL (60% OIL)

Total Barrels Fluid = 0.54
Total Fluid Prod Rate = 8.65 BFPD
Indicated Oil Rate = 5.19 BOPD
Indicated Wtr Rate = 0.31 BWPD

REMARK 1 :
REMARK 2 : RECOVERED 540 FEET OF GAS ABOVE FLUID.
REMARK 3 :
REMARK 4 :

SET PACKER(S) :	1:20 AM	TIME STARTED OFF BOTTOM :	5:50 AM
WELL TEMPERATURE :	118		
INITIAL HYDROSTATIC PRESSURE		(A)	2133
INITIAL FLOW PERIOD MIN:	30	(B)	71 PSI TO (C) : 71
INITIAL CLOSED IN PERIOD MIN:	63	(D)	1018
FINAL FLOW PERIOD MIN:	60	(E)	85 PSI TO (F) : 85
FINAL CLOSED IN PERIOD MIN:	123	(G)	1208
FINAL HYDROSTATIC PRESSURE		(H)	2115

FLUID SAMPLE REPORT

Date : 6-26-87

Ticket No. : 12976

Company : GLOBAL NATURAL RESOURCES CORP.

Well Name & No. : WALKER # 2"A"-20

DST No. 1

County : FINNEY

State : KANSAS

Sampler No. :

Test Interval : 4411-4436

=====
Pressure in Sampler 45 PSIG BHT 118 Deg F

Total Volume of Sampler : 3150 cc

Total Volume of Sample : 3100 cc

Oil: 2000 cc

Water: - cc

Mud: 1100 cc

Gas: .03 cu ft

Other: cc
=====

RESITIVITY

Drilling Mud @ F Chloride Content ppm

Mud Pit Sample @ F Chloride Content ppm

Gas/Oil Ratio Gravity API @ Deg F

Where was sample drained

Remarks:

WESTERN TESTING CO. INC.
WICHITA - KANSAS

Pressure Transient Report

COMPANY : GLOBAL NATURAL RESOURCES CORP
RIG : FINNEY-KANSAS
FIELD : WALKER
WELL : 2"A"-20
DATE : 6-26-87
GAUGE NO : 3086

OPERATIONAL COMMENTS

RECOVERED 540 FEET OF GAS ABOVE FLUID.

COMPANY : GLOBAL NATURAL RESOURCES CORP
 WELL : 2"A"-20
 GAUGE.# : 3086
 DATE : 26/ 6/87

FIELD : WALKER
 JOB # : 12976
 DEPTH : 4436
 TEST :

DATA No.	REAL TIME HR:MN:SS	ELAPSE TIME DELTA HOURS	PRESSURE PSIG	TEMP DEG F	DELTA P Pi-P(i-1)
1	1:20: 0	0.000	71.000	118.00	0.000
2	1:24:59	0.083	71.000	118.00	0.000
3	1:30: 0	0.167	71.000	118.00	0.000
4	1:35: 0	0.250	71.000	118.00	0.000
5	1:39:59	0.333	71.000	118.00	0.000
6	1:45: 0	0.417	71.000	118.00	0.000
7	1:50: 0	0.500	71.000	118.00	0.000
8	1:53: 0	0.550	71.000	118.00	0.000
9	1:56: 0	0.600	71.000	118.00	0.000
10	1:59: 0	0.650	72.000	118.00	1.000
11	2: 2: 0	0.700	75.000	118.00	3.000
12	2: 5: 0	0.750	81.000	118.00	6.000
13	2: 8: 0	0.800	89.000	118.00	8.000
14	2:11: 0	0.850	98.000	118.00	9.000
15	2:14: 0	0.900	110.000	118.00	12.000
16	2:17: 0	0.950	128.000	118.00	18.000
17	2:20: 0	1.000	162.000	118.00	34.000
18	2:23: 0	1.050	207.000	118.00	45.000
19	2:26: 0	1.100	264.000	118.00	57.000
20	2:29: 0	1.150	332.000	118.00	68.000
21	2:32: 0	1.200	412.000	118.00	80.000
22	2:35: 0	1.250	501.000	118.00	89.000
23	2:38: 0	1.300	601.000	118.00	100.000
24	2:41: 0	1.350	703.000	118.00	102.000
25	2:44: 0	1.400	800.000	118.00	97.000
26	2:47: 0	1.450	892.000	118.00	92.000
27	2:50: 0	1.500	956.000	118.00	64.000
28	2:53: 0	1.550	1018.000	118.00	62.000
29	2:54: 0	1.567	85.000	118.00	-933.000
30	2:57:59	1.633	85.000	118.00	0.000
31	3: 3: 0	1.717	85.000	118.00	0.000
32	3: 8: 0	1.800	85.000	118.00	0.000
33	3:12:59	1.883	85.000	118.00	0.000
34	3:18: 0	1.967	85.000	118.00	0.000
35	3:23: 0	2.050	85.000	118.00	0.000
36	3:27:59	2.133	85.000	118.00	0.000
37	3:33: 0	2.217	85.000	118.00	0.000
38	3:38: 0	2.300	85.000	118.00	0.000
39	3:42:59	2.383	85.000	118.00	0.000
40	3:48: 0	2.467	85.000	118.00	0.000
41	3:53: 0	2.550	85.000	118.00	0.000
42	3:56: 0	2.600	85.000	118.00	0.000
43	3:58:59	2.650	90.000	118.00	5.000
44	4: 2: 0	2.700	94.000	118.00	4.000
45	4: 5: 0	2.750	102.000	118.00	8.000
46	4: 8: 0	2.800	109.000	118.00	7.000
47	4:11: 0	2.850	125.000	118.00	16.000
48	4:13:59	2.900	139.000	118.00	14.000
49	4:17: 0	2.950	165.000	118.00	26.000
50	4:20: 0	3.000	196.000	118.00	31.000
51	4:23: 0	3.050	239.000	118.00	43.000
52	4:26: 0	3.100	288.000	118.00	49.000

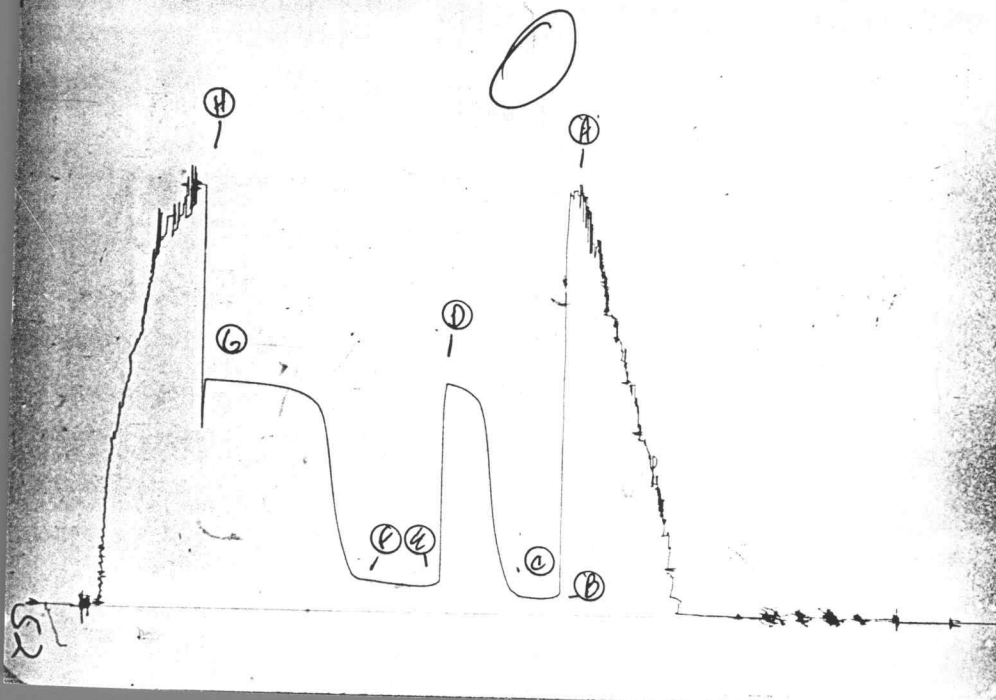
COMPANY : GLOBAL NATURAL RESOURCES CORP
WELL : 2"A"-20
GAUGE # : 3086
DATE : 26/ 6/87

FIELD : WALKER
JOB # : 12976
DEPTH : 4436
TEST :

DATA No.	REAL TIME HR:MN:SS	ELAPSE TIME DELTA HOURS	PRESSURE PSIG	TEMP DEG F	DELTA P Pi-P(i-1)
53	4:29: 0	3.150	354.000	118.00	66.000
54	4:31:59	3.200	424.000	118.00	70.000
55	4:35: 0	3.250	498.000	118.00	74.000
56	4:38: 0	3.300	583.000	118.00	85.000
57	4:41: 0	3.350	660.000	118.00	77.000
58	4:44: 0	3.400	737.000	118.00	77.000
59	4:46:59	3.450	813.000	118.00	76.000
60	4:50: 0	3.500	873.000	118.00	60.000
61	4:53: 0	3.550	927.000	118.00	54.000
62	4:56: 0	3.600	971.000	118.00	44.000
63	4:59: 0	3.650	1006.000	118.00	35.000
64	5: 1:59	3.700	1036.000	118.00	30.000
65	5: 5: 0	3.750	1057.000	118.00	21.000
66	5: 8: 0	3.800	1071.000	118.00	14.000
67	5:11: 0	3.850	1088.000	118.00	17.000
68	5:14: 0	3.900	1101.000	118.00	13.000
69	5:17: 0	3.950	1114.000	118.00	13.000
70	5:20: 0	4.000	1128.000	118.00	14.000
71	5:23: 0	4.050	1138.000	118.00	10.000
72	5:26: 0	4.100	1145.000	118.00	7.000
73	5:29: 0	4.150	1159.000	118.00	14.000
74	5:32: 0	4.200	1166.000	118.00	7.000
75	5:35: 0	4.250	1174.000	118.00	8.000
76	5:38: 0	4.300	1178.000	118.00	4.000
77	5:41: 0	4.350	1185.000	118.00	7.000
78	5:44: 0	4.400	1189.000	118.00	4.000
79	5:47: 0	4.450	1195.000	118.00	6.000
80	5:50: 0	4.500	1199.000	118.00	4.000
81	5:53: 0	4.550	1202.000	118.00	3.000
82	5:56: 0	4.600	1208.000	118.00	6.000

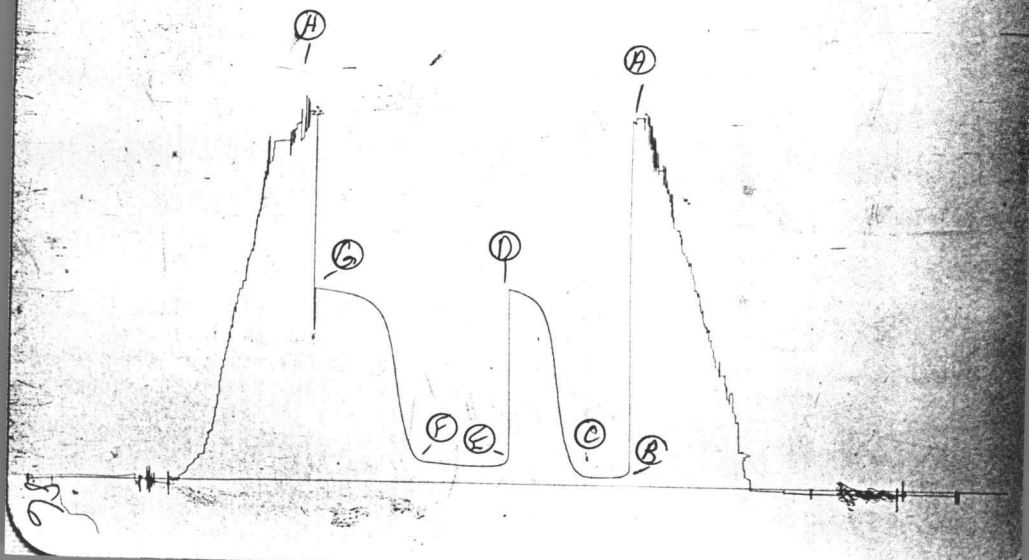
WESTERN TESTING CO. INC.

TKT 12977 15

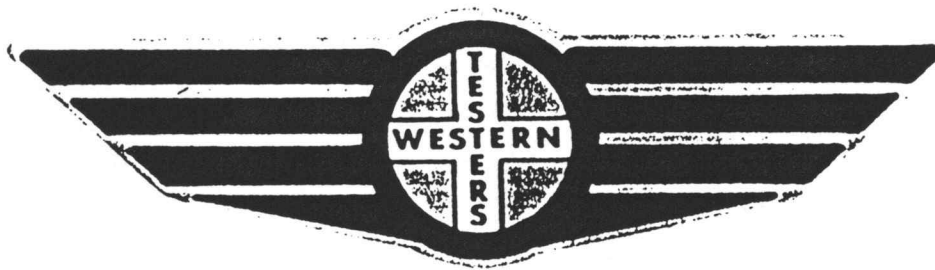


RT 12977 15

I



FORMATION TEST REPORT



Home Office:

Wichita, Kansas 67201

P.O. Box 1599

Phone (316) 262-5861

COMPANY GLOBAL NATURAL RESOURCES CORP. PLEASE & WELL NO. WALKER 2A-20 SEC. 20 TWP. 23S RGE. 32W TEST NO. 2 DATE 6/27/87

WESTERN TESTING CO. INC.
SUBSURFACE PRESSURE SURVEY

DATE : 6-27-87 TICKET : 12977
CUSTOMER : GLOBAL NATURAL RESOURCES CORP. LEASE : WALKER
WELL : 2"A"-20 TEST: 2 GEOLOGIST : J. HEDRICK
ELEVATION : - FORMATION : MORROW
SECTION : 20 TOWNSHIP : 23S
RANGE : 32W COUNTY : FINNEY STATE : KANSAS
GAUGE SN# : 13552 RANGE : 4050 CLOCK : 12

INTERVAL FROM : 4660 TO : 4717 TOTAL DEPTH : 4717
DEPTH OF SELECTIVE ZONE :
PACKER DEPTH : 4655 SIZE : 6.63
PACKER DEPTH : 4660 SIZE : 6.63
PACKER DEPTH : SIZE :
PACKER DEPTH : SIZE :

DRILLING CON. : BEREDCO RIG #4
MUD TYPE : CHEMCIAL VISCOSITY : 59
WEIGHT : 9.0 WATER LOSS (CC) : 6.4
CHLORIDES (PPM) : 700
JARS-MAKE : WTC SERIAL NUMBER : 410
DID WELL FLOW ? : NO REVERSED OUT ? : NO

DRILL COLLAR LENGTH : 620 FT I.D. inch : 2.25
WEIGHT PIPE LENGTH : 0 FT I.D. inch : 0.00
DRILL PIPE LENGTH : 4007 FT I.D. inch : 3.80
TEST TOOL LENGTH : 33 FT TOOL SIZE : 5.50
ANCHOR LENGTH : 57 FT ANCHOR SIZE : 5.50
SURFACE CHOKE SIZE : .75 IN BOTTOM CHOKE SIZE : .75
MAIN HOLE SIZE : 7.875 IN TOOL JOINT SIZE : 4.5 FH

BLOW COMMENT #1 : INITIAL FLOW-WEAK BLOW INCREASED TO STRONG.
BLOW COMMENT #2 : FINAL FLOW-STRONG BLOW THROUGHOUT.
BLOW COMMENT #3 :
BLOW COMMENT #4 :

RECOVERED : 290 FT. OF: OIL & GAS CUT MUD
30% OIL-25% GAS

Total Barrels Fluid = 1.43
Total Fluid Prod Rate = 22.82 BFPD
Indicated Oil Rate = 6.85 BOPD
Indicated Wtr Rate = 1.02 BWPD

REMARK 1 :
REMARK 2 :
REMARK 3 :
REMARK 4 :

SET PACKER(S) : 6:40 PM

TIME STARTED OFF BOTTOM : 11:10 PM

WELL TEMPERATURE : 121

INITIAL HYDROSTATIC PRESSURE

(A) 2240

INITIAL FLOW PERIOD MIN: 30

(B) 87 PSI TO (C) : 93

INITIAL CLOSED IN PERIOD MIN: 60

(D) 1214

FINAL FLOW PERIOD MIN: 60

(E) 140 PSI TO (F) : 166

FINAL CLOSED IN PERIOD MIN: 120

(G) 1212

FINAL HYDROSTATIC PRESSURE

(H) 2240

FLUID SAMPLE REPORT

Date : 6-27-87

Ticket No. : 12977

Company : GLOBAL NATURAL RESOURCES CORP.

Well Name & No. : WALKER # 2"A"-20

DST No. 2

County : FINNEY

State : KANSAS

Sampler No. :

Test Interval : 4660-4717

=====

Pressure in Sampler 0 PSIG BHT 121 Deg F

Total Volume of Sampler : 3150 cc

Total Volume of Sample : 3050 cc

Oil: 1000 cc

Water: - cc

Mud: 2050 cc

Gas: 0 cu ft

Other: cc

=====

RESITIVITY

Drilling Mud @ F Chloride Content ppm

Mud Pit Sample @ F Chloride Content ppm

Gas/Oil Ratio Gravity API @ Deg F

Where was sample drained

Remarks:

WESTERN TESTING CO. INC.
WICHITA - KANSAS

Pressure Transient Report

COMPANY : GLOBAL NATURAL RESOURCES CORP.
RIG : FINNEY-KANSAS
FIELD : WALKER
WELL : 2"A"-20
DATE : 6-27-87
GAUGE NO : 13552

OPERATIONAL COMMENTS

COMPANY : GLOBAL NATURAL RESOURCES CORP.

FIELD : WALKER

WELL : 2"A"-20

JOB # : 12977

GAUGE # : 13552

DEPTH : 4717

DATE : 27/ 6/87

TEST :

DATA No.	REAL TIME HR:MN:SS	ELAPSE TIME DELTA HOURS	PRESSURE PSIG	TEMP DEG F	DELTA P Pi-P(i-1)
1	6:40: 0	0.000	87.000	121.00	0.000
2	6:44:59	0.083	87.000	121.00	0.000
3	6:50: 0	0.167	87.000	121.00	0.000
4	6:55: 0	0.250	87.000	121.00	0.000
5	6:59:59	0.333	88.000	121.00	1.000
6	7: 5: 0	0.417	91.000	121.00	3.000
7	7:10: 0	0.500	93.000	121.00	2.000
8	7:13: 0	0.550	107.000	121.00	14.000
9	7:16: 0	0.600	121.000	121.00	14.000
10	7:19: 0	0.650	152.000	121.00	31.000
11	7:22: 0	0.700	205.000	121.00	53.000
12	7:25: 0	0.750	276.000	121.00	71.000
13	7:28: 0	0.800	355.000	121.00	79.000
14	7:31: 0	0.850	459.000	121.00	104.000
15	7:34: 0	0.900	599.000	121.00	140.000
16	7:37: 0	0.950	795.000	121.00	196.000
17	7:40: 0	1.000	950.000	121.00	155.000
18	7:43: 0	1.050	1058.000	121.00	108.000
19	7:46: 0	1.100	1117.000	121.00	59.000
20	7:49: 0	1.150	1137.000	121.00	20.000
21	7:52: 0	1.200	1157.000	121.00	20.000
22	7:55: 0	1.250	1175.000	121.00	18.000
23	7:58: 0	1.300	1188.000	121.00	13.000
24	8: 1: 0	1.350	1196.000	121.00	8.000
25	8: 4: 0	1.400	1202.000	121.00	6.000
26	8: 7: 0	1.450	1208.000	121.00	6.000
27	8:10: 0	1.500	1214.000	121.00	6.000
28	8:11: 0	1.517	140.000	121.00	-1074.000
29	8:14:59	1.583	140.000	121.00	0.000
30	8:20: 0	1.667	140.000	121.00	0.000
31	8:25: 0	1.750	140.000	121.00	0.000
32	8:29:59	1.833	140.000	121.00	0.000
33	8:35: 0	1.917	143.000	121.00	3.000
34	8:40: 0	2.000	146.000	121.00	3.000
35	8:44:59	2.083	149.000	121.00	3.000
36	8:50: 0	2.167	153.000	121.00	4.000
37	8:55: 0	2.250	157.000	121.00	4.000
38	8:59:59	2.333	160.000	121.00	3.000
39	9: 5: 0	2.417	163.000	121.00	3.000
40	9:10: 0	2.500	166.000	121.00	3.000
41	9:13: 0	2.550	176.000	121.00	10.000
42	9:16: 0	2.600	193.000	121.00	17.000
43	9:19: 0	2.650	239.000	121.00	46.000
44	9:22: 0	2.700	296.000	121.00	57.000
45	9:25: 0	2.750	365.000	121.00	69.000
46	9:28: 0	2.800	455.000	121.00	90.000
47	9:31: 0	2.850	566.000	121.00	111.000
48	9:34: 0	2.900	712.000	121.00	146.000
49	9:37: 0	2.950	854.000	121.00	142.000
50	9:40: 0	3.000	1973.000	121.00	1119.000
51	9:43: 0	3.050	1046.000	121.00	-927.000
52	9:46: 0	3.100	1085.000	121.00	39.000

COMPANY : GLOBAL NATURAL RESOURCES CORP.

FIELD : WALKER

WELL : 2"A"-20

JOB # : 12977

GAUGE # : 13552

DEPTH : 4717

DATE : 27/ 6/87

TEST :

DATA No.	REAL TIME HR:MN:SS	ELAPSE TIME DELTA HOURS	PRESSURE PSIG	TEMP DEG F	DELTA P Pi-P(i-1)
53	9:49: 0	3.150	1105.000	121.00	20.000
54	9:52: 0	3.200	1121.000	121.00	16.000
55	9:55: 0	3.250	1135.000	121.00	14.000
56	9:58: 0	3.300	1147.000	121.00	12.000
57	10: 1: 0	3.350	1157.000	121.00	10.000
58	10: 4: 0	3.400	1163.000	121.00	6.000
59	10: 7: 0	3.450	1176.000	121.00	13.000
60	10:10: 0	3.500	1176.000	121.00	0.000
61	10:13: 0	3.550	1179.000	121.00	3.000
62	10:16: 0	3.600	1182.000	121.00	3.000
63	10:19: 0	3.650	1185.000	121.00	3.000
64	10:22: 0	3.700	1188.000	121.00	3.000
65	10:25: 0	3.750	1191.000	121.00	3.000
66	10:28: 0	3.800	1193.000	121.00	2.000
67	10:31: 0	3.850	1195.000	121.00	2.000
68	10:34: 0	3.900	1197.000	121.00	2.000
69	10:37: 0	3.950	1199.000	121.00	2.000
70	10:40: 0	4.000	1201.000	121.00	2.000
71	10:43: 0	4.050	1203.000	121.00	2.000
72	10:46: 0	4.100	1205.000	121.00	2.000
73	10:49: 0	4.150	1206.000	121.00	1.000
74	10:52: 0	4.200	1207.000	121.00	1.000
75	10:55: 0	4.250	1208.000	121.00	1.000
76	10:58: 0	4.300	1209.000	121.00	1.000
77	11: 1: 0	4.350	1210.000	121.00	1.000
78	11: 4: 0	4.400	1211.000	121.00	1.000
79	11: 7: 0	4.450	1212.000	121.00	1.000
80	11:10: 0	4.500	1212.000	121.00	0.000

WESTERN TESTING CO. INC.

TO: GLOBAL NATRUAL RESOURCES CORP.
BOX 4682
HOUSTON, TX 77210

FROM: WESTERN TESTING CO. INC.
P.O. BOX 1599
WICHITA, KANSAS 67201-1599

SUBJECT: COPIES OF DRILL STEM TEST MAILED TO INTEREST OWNERS.

DATE : JUNE 26 THRU 29 1987

WELL NAME & NUMBER: WALKER 2"A"-20

TEST NUMBER: 1, 2, & 3

LOCATION: FINNEY COUNTY KANSAS

COPIES MAILED TO:

BRUCE P. BAGANZ
GLOBAL NATURAL RESOURCES CORP.
P.O. BOX 4862
HOUSTON, TX 77210
(INVOICE, ORIGINAL, & 6 COPIES)

THURMAN GEDDIE
332 PERRYBROOKS BLDG.
AUSTIN, TX 78701
(1 COPY)

BEREXCO INC.
970 FOURTH FINANCIAL CENTER
WICHITA, KS 67202
(1 COPY)

SANDY RUSHWORTH
AMOCO PRODUCTION COMPANY
P.O. BOX 800
DENVER, CO 80201
(2 COPIES)

PETE WILSON
BEREXCO, INC.
5101 N. CLASSEN BLVD. SUITE 205
OKLAHOMA CITY, OK 73118
(1 COPY)

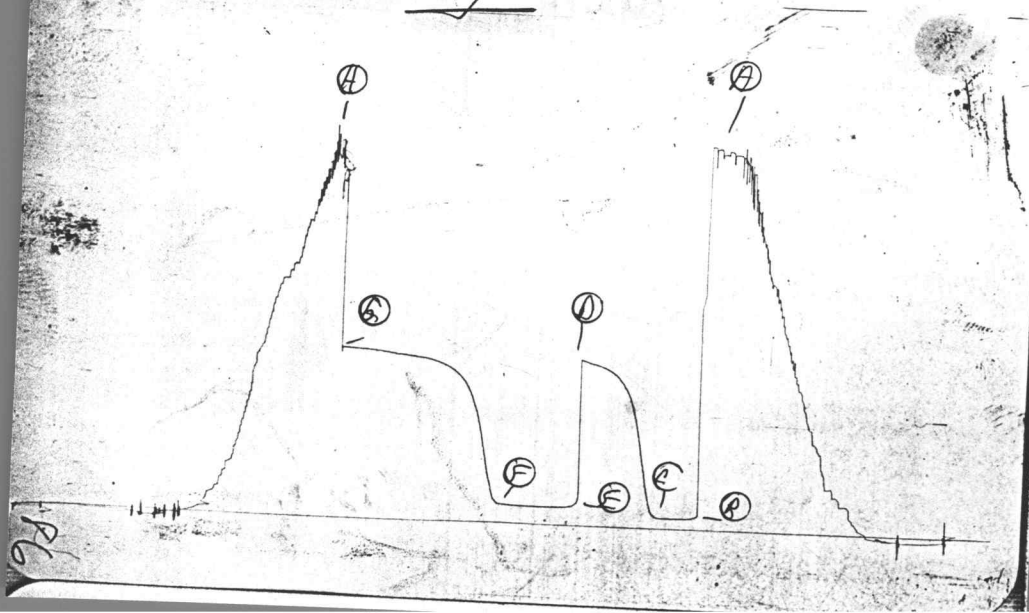
TIM BARTSHE
330 S. GARRISON
LAKEWOOD, CO 80226
(1 COPY)

C. H. KELM
AMOCO PRODUCTION CO.
P.O. BOX 432
LIBERAL, KA 67901
(1 COPY)

LB PETROLEUM, INC.
370 SEVENTEENTH STREET, #3200
DENVER, CO 80202
(1 COPY)

RF 12928 15

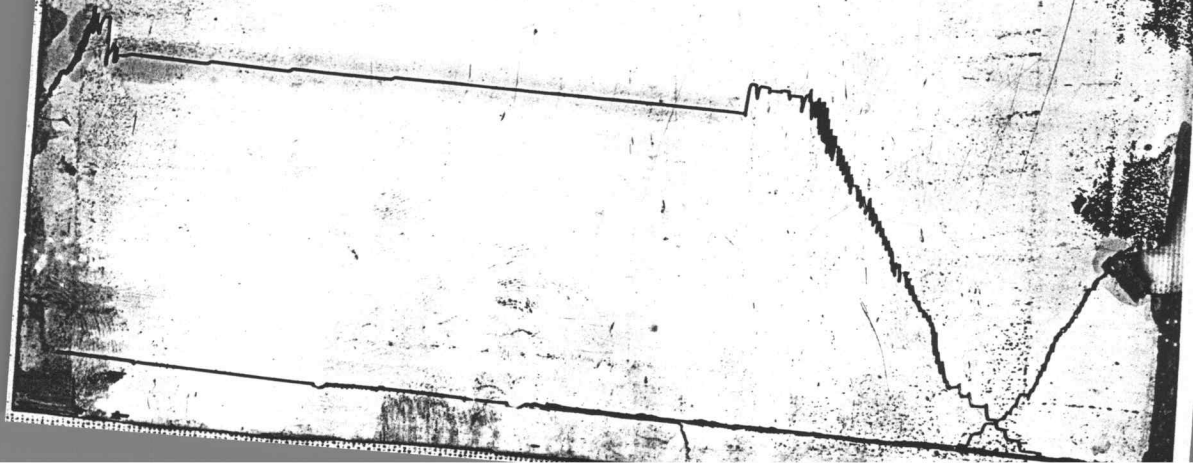
7



KT 12978

15

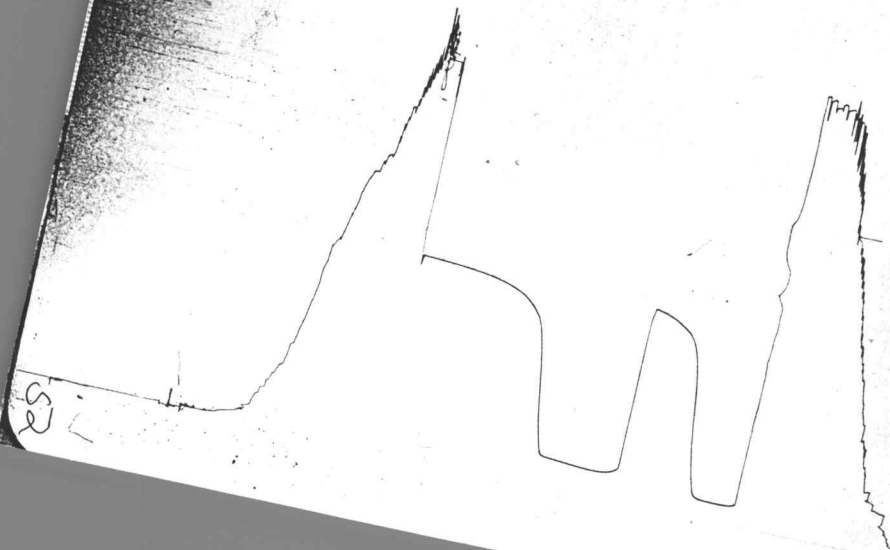
Below Straddle



K7 12978

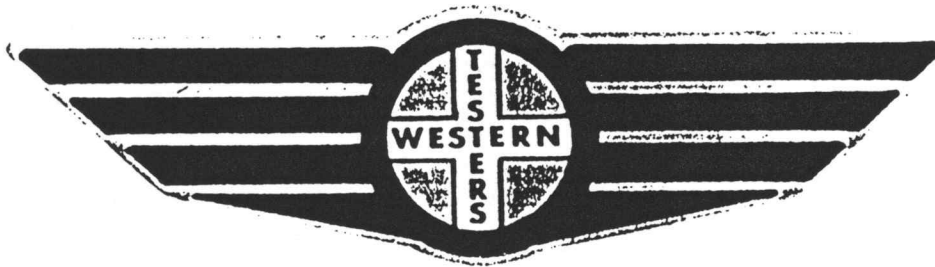
0

15



S

FORMATION TEST REPORT



Home Office:

Wichita, Kansas 67201

P.O. Box 1599

Phone (316) 262-5861

COMPANY

GLOBAL NATURAL RESOURCES CORP. LEASE & WELL NO.

WALKER 2A-20

SEC. 20

TWP. 23S

RGE. 32W

TEST NO. 3

DATE 6/29/87

WESTERN TESTING CO. INC.
SUBSURFACE PRESSURE SURVEY

DATE : 6-29-87 TICKET : 12978
CUSTOMER : GLOBAL NATURAL RESOURCES CORP LEASE : WALKER
WELL : 2"A"-20 TEST: 3 GEOLOGIST : J. HEDRICK
ELEVATION : - FORMATION : -
SECTION : 20 TOWNSHIP : 23S
RANGE : 32W COUNTY : FINNEY STATE : KANSAS
GAUGE SN# : 3086 RANGE : 4500 CLOCK : 12

INTERVAL FROM : 4760 TO : 4800 TOTAL DEPTH : 4895
DEPTH OF SELECTIVE ZONE :
PACKER DEPTH : 4755 SIZE : 6.63
PACKER DEPTH : 4760 SIZE : 6.63
PACKER DEPTH : 4800 SIZE : 6.63
PACKER DEPTH : SIZE :

DRILLING CON. : BEREDCO RIG #4
MUD TYPE : CHEMICAL VISCOSITY : 55
WEIGHT : 9.1 WATER LOSS (CC) : 6.2
CHLORIDES (PPM) : 950
JARS-MAKE : WTC SERIAL NUMBER : 408
DID WELL FLOW ? : NO REVERSED OUT ? : NO

DRILL COLLAR LENGTH : 530 FT I.D. inch : 2.25
WEIGHT PIPE LENGTH : 0 FT I.D. inch : 0.00
DRILL PIPE LENGTH : 4195 FT I.D. inch : 3.80
TEST TOOL LENGTH : 33 FT TOOL SIZE : 5.50
ANCHOR LENGTH : 137 FT ANCHOR SIZE : 5.50
SURFACE CHOKE SIZE : .75 IN BOTTOM CHOKE SIZE : .75
MAIN HOLE SIZE : 7.875 IN TOOL JOINT SIZE : 4.5 FH

BLOW COMMENT #1 : WEAK BLOW INCREASED TO FAIR ON THE INITIAL FLOW.
BLOW COMMENT #2 : STRONG BLOW THROUGHOUT THE FINAL FLOW.
BLOW COMMENT #3 :
BLOW COMMENT #4 :

RECOVERED : 20 FT OF: GAS CUT MUDDY OIL
80% OIL-10% GAS
RECOVERED : 180 FT OF: HEAVY OIL & GAS CUT MUD
40% OIL-20% GAS

Total Barrels Fluid = 0.98
Total Fluid Prod Rate = 15.74 BFPD
Indicated Oil Rate = 6.92 BOPD
Indicated Wtr Rate = 0.58 BWPD

REMARK 1 :
REMARK 2 :
REMARK 3 :
REMARK 4 :

SET PACKER(S) : 6:00 PM
WELL TEMPERATURE : 122
INITIAL HYDROSTATIC PRESSURE (A) 2351
INITIAL FLOW PERIOD MIN: 30 (B) 98 PSI TO (C) : 98
INITIAL CLOSED IN PERIOD MIN: 60 (D) 1050
FINAL FLOW PERIOD MIN: 60 (E) 145 PSI TO (F) : 151
FINAL CLOSED IN PERIOD MIN: 120 (G) 1076
FINAL HYDROSTATIC PRESSURE (H) 2321

TIME STARTED OFF BOTTOM : 10:30 PM

FLUID SAMPLE REPORT

Date : 6-29-87

Ticket No. : 12978

Company : GLOBAL NATURAL RESOURCES CORP.

Well Name & No. : WALKER 2"A"-20

DST No. 3

County : FINNEY

State : KANSAS

Sampler No. :

Test Interval : 4760-4800

=====
Pressure in Sampler 0 PSIG BHT 122 Deg F

Total Volume of Sampler : 3150 cc

Total Volume of Sample : 3000 cc

Oil: 1200 cc

Water: - cc

Mud: 1950 cc

Gas: 0 cu ft

Other: cc
=====

RESITIVITY

Drilling Mud @ F Chloride Content ppm

Mud Pit Sample @ F Chloride Content ppm

Gas/Oil Ratio Gravity API @ Deg F

Where was sample drained

Remarks:

WESTERN TESTING CO. INC.
WICHITA - KANSAS

Pressure Transient Report

COMPANY : GLOBAL NATURAL RESOURCES CORP
RIG : FINNEY-KANSAS
FIELD : WALKER
WELL : 2"A"-20
DATE : 6-29-87
GAUGE NO : 3086

OPERATIONAL COMMENTS

COMPANY : GLOBAL NATURAL RESOURCES CORP FIELD : WALKER
 WELL : 2"A"-20 JOB # : 12978
 GAUGE # : 3086 DEPTH : 4895'
 DATE : 29/ 6/87 TEST :

DATA No.	REAL TIME HR:MN:SS	ELAPSE TIME DELTA HOURS	PRESSURE PSIG	TEMP DEG F	DELTA P Pi-P(i-1)
1	6: 0: 0	0.000	98.000	122.00	0.000
2	6: 4:59	0.083	98.000	122.00	0.000
3	6:10: 0	0.167	98.000	122.00	0.000
4	6:15: 0	0.250	98.000	122.00	0.000
5	6:19:59	0.333	98.000	122.00	0.000
6	6:25: 0	0.417	98.000	122.00	0.000
7	6:30: 0	0.500	98.000	122.00	0.000
8	6:33: 0	0.550	109.000	122.00	11.000
9	6:36: 0	0.600	141.000	122.00	32.000
10	6:39: 0	0.650	243.000	122.00	102.000
11	6:42: 0	0.700	373.000	122.00	130.000
12	6:45: 0	0.750	518.000	122.00	145.000
13	6:48: 0	0.800	655.000	122.00	137.000
14	6:51: 0	0.850	754.000	122.00	99.000
15	6:54: 0	0.900	834.000	122.00	80.000
16	6:57: 0	0.950	884.000	122.00	50.000
17	7: 0: 0	1.000	918.000	122.00	34.000
18	7: 2:59	1.050	952.000	122.00	34.000
19	7: 6: 0	1.100	973.000	122.00	21.000
20	7: 9: 0	1.150	990.000	122.00	17.000
21	7:12: 0	1.200	998.000	122.00	8.000
22	7:15: 0	1.250	1012.000	122.00	14.000
23	7:18: 0	1.300	1021.000	122.00	9.000
24	7:21: 0	1.350	1028.000	122.00	7.000
25	7:24: 0	1.400	1032.000	122.00	4.000
26	7:27: 0	1.450	1042.000	122.00	10.000
27	7:30: 0	1.500	1050.000	122.00	8.000
28	7:31: 0	1.517	145.000	122.00	-905.000
29	7:34:59	1.583	145.000	122.00	0.000
30	7:40: 0	1.667	145.000	122.00	0.000
31	7:45: 0	1.750	145.000	122.00	0.000
32	7:49:59	1.833	145.000	122.00	0.000
33	7:55: 0	1.917	145.000	122.00	0.000
34	8: 0: 0	2.000	145.000	122.00	0.000
35	8: 4:59	2.083	145.000	122.00	0.000
36	8:10: 0	2.167	145.000	122.00	0.000
37	8:15: 0	2.250	145.000	122.00	0.000
38	8:19:59	2.333	146.000	122.00	1.000
39	8:25: 0	2.417	148.000	122.00	2.000
40	8:30: 0	2.500	151.000	122.00	3.000
41	8:33: 0	2.550	179.000	122.00	28.000
42	8:36: 0	2.600	268.000	122.00	89.000
43	8:39: 0	2.650	363.000	122.00	95.000
44	8:42: 0	2.700	493.000	122.00	130.000
45	8:45: 0	2.750	620.000	122.00	127.000
46	8:48: 0	2.800	710.000	122.00	90.000
47	8:51: 0	2.850	775.000	122.00	65.000
48	8:54: 0	2.900	832.000	122.00	57.000
49	8:57: 0	2.950	877.000	122.00	45.000
50	9: 0: 0	3.000	909.000	122.00	32.000
51	9: 3: 0	3.050	937.000	122.00	28.000
52	9: 6: 0	3.100	956.000	122.00	19.000

COMPANY : GLOBAL NATURAL RESOURCES CORP FIELD : WALKER
 WELL : 2"A"-20 JOB # : 12978
 GAUGE # : 3086 DEPTH : 4895
 DATE : 29/ 6/87 TEST :

DATA No.	REAL TIME HR:MN:SS	ELAPSE TIME DELTA HOURS	PRESSURE PSIG	TEMP DEG F	DELTA P $P_i - P_{(i-1)}$
53	9: 9: 0	3.150	971.000	122.00	15.000
54	9:12: 0	3.200	985.000	122.00	14.000
55	9:15: 0	3.250	995.000	122.00	10.000
56	9:18: 0	3.300	1005.000	122.00	10.000
57	9:21: 0	3.350	1012.000	122.00	7.000
58	9:24: 0	3.400	1020.000	122.00	8.000
59	9:27: 0	3.450	1026.000	122.00	6.000
60	9:30: 0	3.500	1030.000	122.00	4.000
61	9:33: 0	3.550	1031.000	122.00	1.000
62	9:36: 0	3.600	1036.000	122.00	5.000
63	9:39: 0	3.650	1039.000	122.00	3.000
64	9:42: 0	3.700	1041.000	122.00	2.000
65	9:45: 0	3.750	1044.000	122.00	3.000
66	9:48: 0	3.800	1047.000	122.00	3.000
67	9:51: 0	3.850	1050.000	122.00	3.000
68	9:54: 0	3.900	1053.000	122.00	3.000
69	9:57: 0	3.950	1056.000	122.00	3.000
70	10: 0: 0	4.000	1059.000	122.00	3.000
71	10: 3: 0	4.050	1062.000	122.00	3.000
72	10: 6: 0	4.100	1065.000	122.00	3.000
73	10: 9: 0	4.150	1067.000	122.00	2.000
74	10:11:59	4.200	1069.000	122.00	2.000
75	10:15: 0	4.250	1071.000	122.00	2.000
76	10:18: 0	4.300	1072.000	122.00	1.000
77	10:21: 0	4.350	1073.000	122.00	1.000
78	10:24: 0	4.400	1074.000	122.00	1.000
79	10:27: 0	4.450	1075.000	122.00	1.000
80	10:30: 0	4.500	1076.000	122.00	1.000

WESTERN TESTING CO. INC.