

15-083-21328

30-23s-23w

FORMATION TEST REPORT



Home Office:

Wichita, Kansas 67201

P.O. Box 1599

Phone (316) 262-5861

COMPANY BIRD ENERGY, INC.

LEASE & WELL NO. _____

CAROL #1

SEC. 30

TWP. 23S

RGE 23W

TEST NO. 1

DATE

9/25/89

WESTERN TESTING CO. INC.
SUBSURFACE PRESSURE SURVEY

DATE : 9/25/89 TICKET : 15211
CUSTOMER : BIRD ENERGY INC. LEASE : CAROL
WELL : 1 TEST: 1 GEOLOGIST : BIRD
ELEVATION : FORMATION : MISSISSIPPI
SECTION : 30 TOWNSHIP : 23S
RANGE : 23W COUNTY : HODGEMAN STATE : KANSAS
GAUGE SN# : 13552 RANGE : 4050 CLOCK : 12

INTERVAL FROM : 4638 TO : 4713 TOTAL DEPTH : 4713
DEPTH OF SELECTIVE ZONE :
PACKER DEPTH : 4633 SIZE : 6.63
PACKER DEPTH : 4638 SIZE : 6.63
PACKER DEPTH : SIZE :
PACKER DEPTH : SIZE :

DRILLING CON. : DUKE RIG 4
MUD TYPE : CHEMICAL VISCOSITY : 46
WEIGHT : 9.4 WATER LOSS (CC) : 12
CHLORIDES (PPM) : 3400
JARS-MAKE : WTC SERIAL NUMBER : 407
DID WELL FLOW ? : NO REVERSED OUT ? : NO

DRILL COLLAR LENGTH : 210 FT I.D. inch : 2.25
WEIGHT PIPE LENGTH : 0 FT I.D. inch : 0.00
DRILL PIPE LENGTH : 4399 FT I.D. inch : 3.80
TEST TOOL LENGTH : 29 FT TOOL SIZE : 5.50
ANCHOR LENGTH : 75 FT ANCHOR SIZE : 5.50
SURFACE CHOKE SIZE : .75 IN BOTTOM CHOKE SIZE : .75
MAIN HOLE SIZE : 7.875 IN TOOL JOINT SIZE : 4.5FH

BLOW COMMENT #1 : STRONG BLOW THROUGHOUT TEST.
BLOW COMMENT #2 :
BLOW COMMENT #3 :
BLOW COMMENT #4 :

RECOVERED : 130 FT OF: DRILLING MUD
RECOVERED : 120 FT OF: MUDDY WATER
RECOVERED : 180 FT OF: SALTWATER

Total Barrels Fluid = 4.12
Total Fluid Prod Rate = 197.69 BFPD
Indicated Wtr Rate = 110.93 BWPD

REMARK 1 :
REMARK 2 : CHLORIDES 25000 PPM
REMARK 3 : SLIGHT PLUGGING 5 MINUTES IN IFP
REMARK 4 :

SET PACKER(S) : 7:10 PM TIME STARTED OFF BOTTOM : 8:40 PM
WELL TEMPERATURE : 124
INITIAL HYDROSTATIC PRESSURE (A) 2450
INITIAL FLOW PERIOD MIN: 15 (B) 158 PSI TO (C) : 236
INITIAL CLOSED IN PERIOD MIN: 30 (D) 1457
FINAL FLOW PERIOD MIN: 15 (E) 297 PSI TO (F) : 297
FINAL CLOSED IN PERIOD MIN: 30 (G) 1456
FINAL HYDROSTATIC PRESSURE (H) 2431

WESTERN TESTING CO. INC.
WICHITA-KANSAS

Pressure Transient Report

COMPANY : BIRD ENERGY INC.
RIG : HODGEMAN-KANSAS
FIELD : CAROL
WELL : 1
DATE : 9/25/89
GAUGE NO : 13552

OPERATIONAL COMMENTS

CHLORIDES 25000 PPM

COMPANY : BIRD ENERGY INC.
 WELL : 1
 GAUGE # : 13552
 DATE : 25/ 9/89

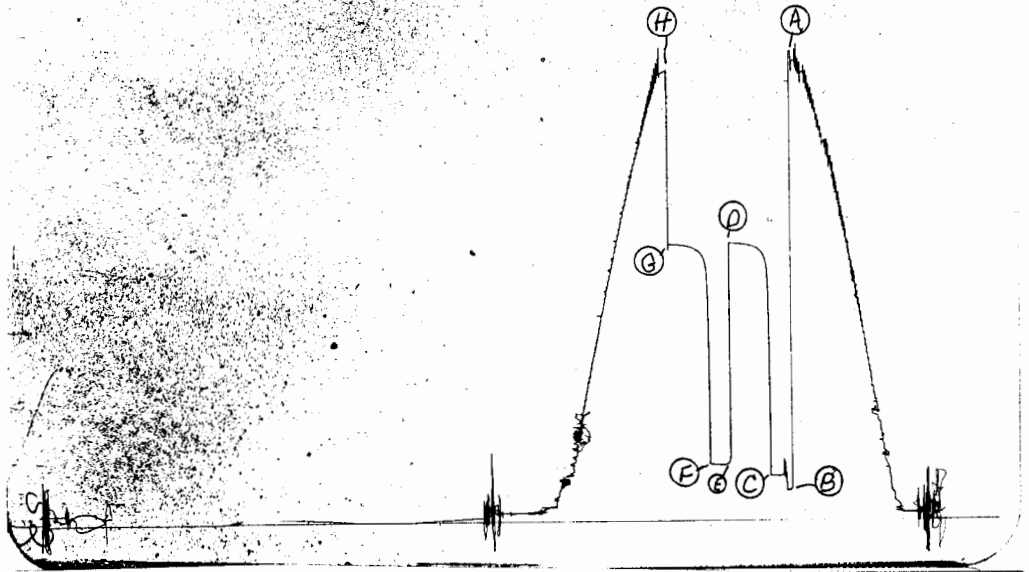
FIELD : CAROL
 JOB # : 15211
 DEPTH : 4713
 TEST :

DATA No.	REAL TIME HR:MN:SS	ELAPSE TIME DELTA HOURS	PRESSURE PSIG	TEMP DEG F	DELTA P Pi-P(1-1)
INITIAL FLOW PERIOD					
2	7:10: 0	0.000	158.000	124.00	0.000
3	7:14:59	0.083	302.000	124.00	144.000
4	7:20: 0	0.167	236.000	124.00	-66.000
5	7:25: 0	0.250	236.000	124.00	0.000
INITIAL SHUT-IN PERIOD					
6	7:28: 0	0.300	1326.000	124.00	1090.000
7	7:31: 0	0.350	1404.000	124.00	78.000
8	7:34: 0	0.400	1426.000	124.00	22.000
9	7:37: 0	0.450	1438.000	124.00	12.000
10	7:40: 0	0.500	1446.000	124.00	8.000
11	7:43: 0	0.550	1449.000	124.00	3.000
12	7:46: 0	0.600	1453.000	124.00	4.000
13	7:49: 0	0.650	1455.000	124.00	2.000
14	7:52: 0	0.700	1456.000	124.00	1.000
15	7:55: 0	0.750	1457.000	124.00	1.000
FINAL FLOW PERIOD					
16	7:56: 0	0.767	297.000	124.00	-1160.000
17	7:59:59	0.833	297.000	124.00	0.000
18	8: 5: 0	0.917	297.000	124.00	0.000
19	8:10: 0	1.000	297.000	124.00	0.000
FINAL SHUT-IN PERIOD					
20	8:13: 0	1.050	1334.000	124.00	1037.000
21	8:16: 0	1.100	1400.000	124.00	66.000
22	8:19: 0	1.150	1420.000	124.00	20.000
23	8:22: 0	1.200	1432.000	124.00	12.000
24	8:25: 0	1.250	1440.000	124.00	8.000
25	8:28: 0	1.300	1446.000	124.00	6.000
26	8:31: 0	1.350	1448.000	124.00	2.000
27	8:34: 0	1.400	1451.000	124.00	3.000
28	8:37: 0	1.450	1452.000	124.00	1.000
29	8:40: 0	1.500	1456.000	124.00	4.000

WESTERN TESTING CO. INC.

TK# 15211

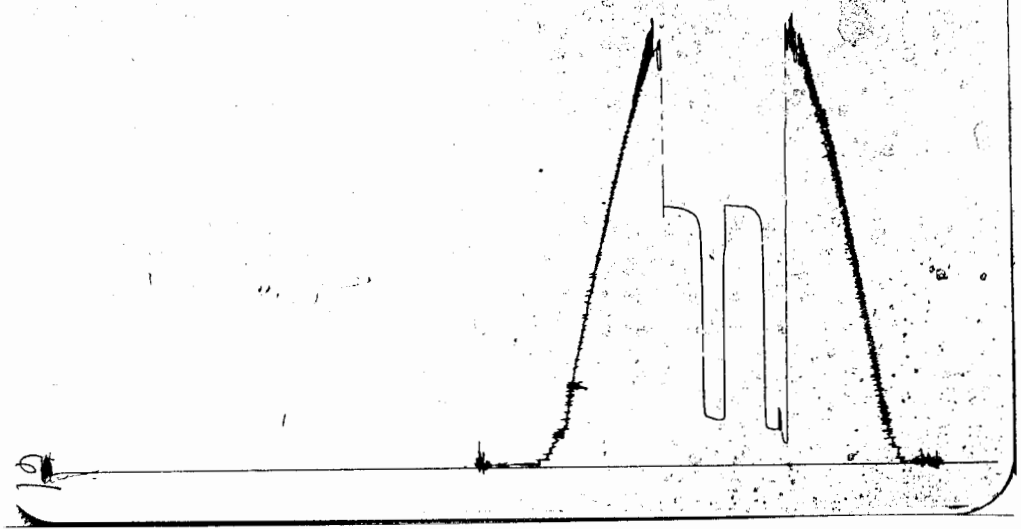
I.



Inside Recorder

TK# 15211

0



Outside Recorder