

TRILOBITE TESTING COMPANY, L.L.C.

P.O. Box 362 • Hays, Kansas 67601

Drill-Stem Test Data

Well Name LENA MAI #2-29 Test No. 1 Date 3/20/92
Company BEREXCO INC. Zone Tested MARMATON
Address 970 4th FINANCIAL CNTR WICHITA KS Elevation 2850 K.B.
Co. Rep./Geo. CHARLIE SPRADLIN Cont. BEREDCO RIG #2 Est. Ft. of Pay _____
Location: Sec. 29 Twp. 23S Rge. 32W Co. FINNEY State KS

Interval Tested 4418-4437 Drill Pipe Size 4.5 XH
Anchor Length 19 Wt. Pipe I.D. - 2.7 Ft. Run _____
Top Packer Depth 4413 Drill Collar — 2.25 Ft. Run 348
Bottom Packer Depth 4418
Total Depth 4437

Mud Wt. 8.8 lb / gal. Viscosity 41 Filtrate 6

Tool Open @ 4:00 AM Initial Blow SURFACE BLOW THROUGHOUT

Final Blow NO BLOW

Recovery — Total Feet 20 Flush Tool? NO

Rec. 20 Feet of DRILLING MUD W/ SPOTS OF OIL

Rec. _____ Feet of _____

Rec. _____ Feet of _____

Rec. _____ Feet of _____

Rec. _____ Feet of _____

BHT 108 °F Gravity _____ °API @ _____ °F Corrected Gravity _____ °API

RW _____ @ _____ °F Chlorides _____ ppm Recovery Chlorides 2000 ppm System

(A) Initial Hydrostatic Mud 2089.3 PSI Ak1 Recorder No. 13277 Range 4125

(B) First Initial Flow Pressure 15.2 PSI @ (depth) 4421 w/Clock No. 27594

(C) First Final Flow Pressure 15.2 PSI Ak1 Recorder No. 11038 Range 5075

(D) Initial Shut-in Pressure 1174.3 PSI @ (depth) 4434 w/Clock No. 30418

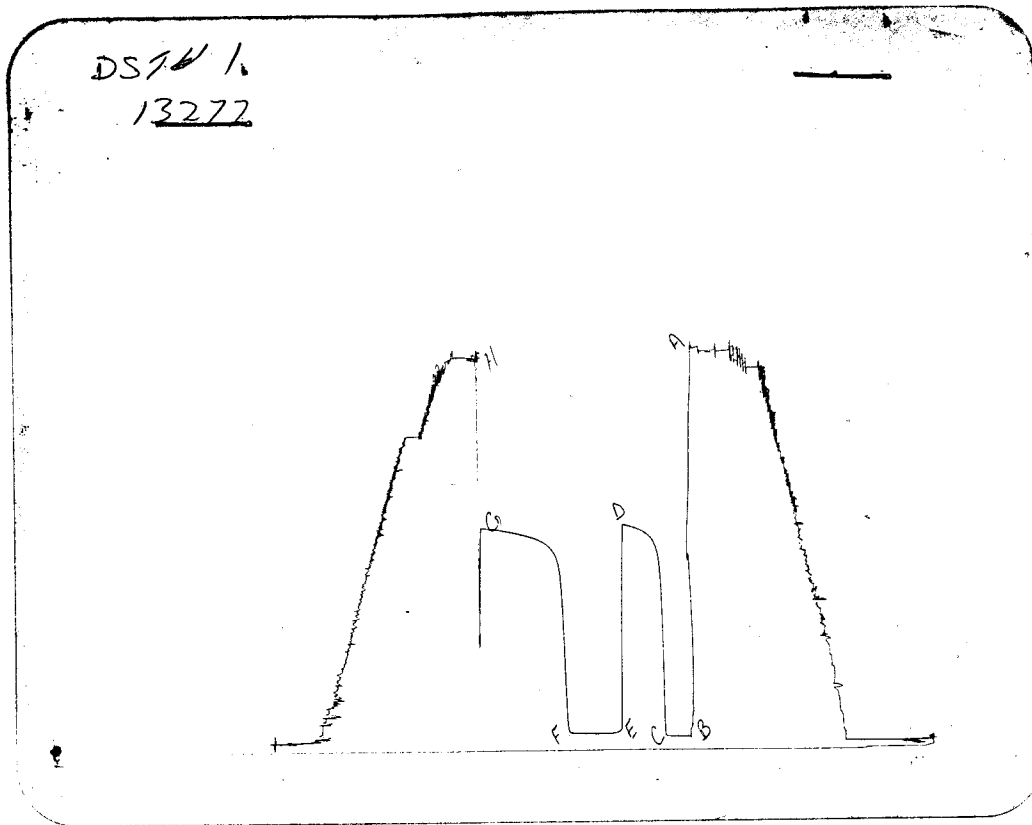
(E) Second Initial Flow Pressure 29.8 PSI Ak1 Recorder No. _____ Range _____

(F) Second Final Flow Pressure 29.8 PSI @ (depth) _____ w/Clock No. _____

(G) Final Shut-in Pressure 1161.1 PSI Initial Opening 15 Final Flow 30

(H) Final Hydrostatic Mud 2060.4 PSI Initial Shut-in 30 Final Shut-in 60

Our Representative TOM HORACEK TOTAL PRICE \$ 800



POINT This is an actual photograph of recorder chart PRESSURE

| POINT | FIELD READING | OFFICE READING |
|----------------------------------|---------------|----------------|
| (A) INITIAL HYDROSTATIC MUD | 2080 | 2089.3 |
| (B) FIRST INITIAL FLOW PRESSURE | 14 | 15.2 |
| (C) FIRST FINAL FLOW PRESSURE | 14 | 15.2 |
| (D) INITIAL CLOSED-IN PRESSURE | 1172 | 1174.3 |
| (E) SECOND INITIAL FLOW PRESSURE | 27 | 29.8 |
| (F) SECOND FINAL FLOW PRESSURE | 27 | 29.8 |
| (G) FINAL CLOSED-IN PRESSURE | 1159 | 1161.1 |
| (H) FINAL HYDROSTATIC MUD | 2055 | 2060.4 |

TRILOBITE TESTING COMPANY L.L.C.

P.O. Box 362 • Hays, Kansas 67601

Test Ticket

No 4442

| | | | | | | | | | |
|-----------------|--|--------------------|------------------------------|-----------------------------|----------------|------------------------------|-----------------------------|------------|------------|
| Well Name & No. | <u>Lena Mai #2-29</u> | Test No. | <u>1</u> | Date | <u>3-20-92</u> | | | | |
| Company | <u>Berexo Drly</u> | Zone Tested | <u>Marmaton</u> | | | | | | |
| Address | <u>970 4th Financial Center Wichita Ks 67202</u> | | Elevation | <u>2850 (KB)</u> | | | | | |
| Co. Rep./Geo. | <u>Charlie Spradlin</u> | cont. | <u>Berexo Drly #2</u> | Est. Ft. of Pay | | | | | |
| Location: Sec. | <u>29</u> | Twp. | <u>23 S</u> | Rge. | <u>32 W</u> | Co. | <u>Finney</u> | State | <u>Ks.</u> |
| No. of Copies | <u>7</u> | Distribution Sheet | Yes <input type="checkbox"/> | No <input type="checkbox"/> | Turnkey | Yes <input type="checkbox"/> | No <input type="checkbox"/> | Evaluation | |

| | | | | |
|---------------------|------------------|-----------------------------|---------------------------------|---------------------|
| Interval Tested | <u>4418-4437</u> | Drill Pipe Size | <u>4.5 x-Hole</u> | |
| Anchor Length | <u>19'</u> | Top Choke — 1" | Bottom Choke — <u>3/4"</u> | |
| Top Packer Depth | <u>4413</u> | Hole Size — <u>7 7/8"</u> | Rubber Size — <u>6 3/4"</u> | |
| Bottom Packer Depth | <u>4418</u> | Wt. Pipe I.D. — 2.7 Ft. Run | <u>-</u> | |
| Total Depth | <u>4437</u> | Drill Collar — 2.25 Ft. Run | <u>348'</u> | |
| Mud Wt. | <u>8.8</u> | lb/gal. | Viscosity <u>41</u> | Filtrate <u>6.0</u> |
| Tool Open @ | <u>4:00 AM</u> | Initial Blow | <u>surface blow through out</u> | |

Final Blow NO blow

| | | | | | | |
|-----------------------|--------------------|-----------------------------|-------|-------------|-----------|-------|
| Recovery — Total Feet | <u>20'</u> | Feet of Gas in Pipe | | Flush Tool? | <u>NO</u> | |
| Rec. | Feet Of | % gas | % oil | % water | % mud | |
| Rec. | Feet Of | % gas | % oil | % water | % mud | |
| Rec. | <u>20'</u> Feet Of | <u>Drly mud w/spots oil</u> | % gas | % oil | % water | % mud |
| Rec. | Feet Of | % gas | % oil | % water | % mud | |
| Rec. | Feet Of | % gas | % oil | % water | % mud | |

BHT 108 °F Gravity _____ °API @ _____ °F Corrected Gravity _____ °API

RW _____ @ _____ °F Chlorides _____ ppm Recovery Chlorides 2000 ppm System

(A) Initial Hydrostatic Mud 2080 PSI AK1 Recorder No. 13277 Range 4125

(B) First Initial Flow Pressure 14 PSI @ (depth) 4421 w/Clock No. 27594

(C) First Final Flow Pressure 14 PSI AK1 Recorder No. 11038 Range 5075

(D) Initial Shut-In Pressure 1172 PSI @ (depth) 4434 w/Clock No. 30418

(E) Second Initial Flow Pressure 27 PSI AK1 Recorder No. _____ Range _____

(F) Second Final Flow Pressure 27 PSI @ (depth) _____ w/Clock No. _____

(G) Final Shut-In Pressure 1159 PSI Initial Opening 15 Test 550.00

(H) Final Hydrostatic Mud 2055 PSI Initial Shut-In 30 Jars 200.00

TRILOBITE TESTING COMPANY SHALL NOT BE LIABLE FOR DAMAGE OF ANY KIND OF THE PROPERTY OR PERSONNEL OF THE ONE FOR WHOM A TEST IS MADE, OR FOR ANY LOSS SUFFERED OR SUBSTAINED, DIRECTLY OR INDIRECTLY, THROUGH THE USE OF ITS EQUIPMENT, OR ITS STATEMENTS OR OPINION CONCERNING THE RESULTS OF ANY TEST. TOOLS LOST OR DAMAGED IN THE HOLE SHALL BE PAID FOR AT COST BY THE PARTY FOR WHOM THE TEST IS MADE.

Final Flow 30 Safety Joint 50.00

Final Shut-In 60 Straddle _____

Circ. Sub _____

Sampler _____

Approved By Charlie Spradlin

Extra Packer _____

Our Representative Tom Horacek

Other _____

TRILOBITE TESTING COMPANY, L.L.C.

P.O. Box 362 • Hays, Kansas 67601

Drill-Stem Test Data

Well Name LENA MAI #2-29 Test No. 2 Date 3/21/92
Company BEREXCO INC. Zone Tested PAWNEE
Address 970 4th FINANCIAL CNTR WICHITA KS Elevation 2850 K.B.
Co. Rep./Geo. CHARLIE SPRADLIN Cont. BEREDCO RIG #2 Est. Ft. of Pay 6
Location: Sec. 29 Twp. 23S Rge. 32W Co. FINNEY State KS

Interval Tested 4449-4476 Drill Pipe Size 4.5 XH
Anchor Length 27 Wt. Pipe I.D. - 2.7 Ft. Run _____
Top Packer Depth 4444 Drill Collar - 2.25 Ft. Run 348
Bottom Packer Depth 4449
Total Depth 4476

Mud Wt. 8.9 lb / gal. Viscosity 50 Filtrate 6.6

Tool Open @ 9:30 PM Initial Blow 1/4" BLOW THROUGHOUT

Final Blow SURFACE BLOW THROUGHOUT

Recovery — Total Feet 30 Flush Tool? NO

Rec. 30 Feet of DRILLING MUD

Rec. _____ Feet of _____

Rec. _____ Feet of _____

Rec. _____ Feet of _____

Rec. _____ Feet of _____

BHT 108 °F Gravity _____ °API @ _____ °F Corrected Gravity _____ °API

RW _____ @ _____ °F Chlorides _____ ppm Recovery Chlorides 2075 ppm System

(A) Initial Hydrostatic Mud 2089.3 PSI AK1 Recorder No. 13277 Range 4125

(B) First Initial Flow Pressure 15.2 PSI @ (depth) 4453 w/Clock No. 27594

(C) First Final Flow Pressure 15.2 PSI AK1 Recorder No. 11038 Range 5075

(D) Initial Shut-in Pressure 1187.6 PSI @ (depth) 4473 w/Clock No. 30418

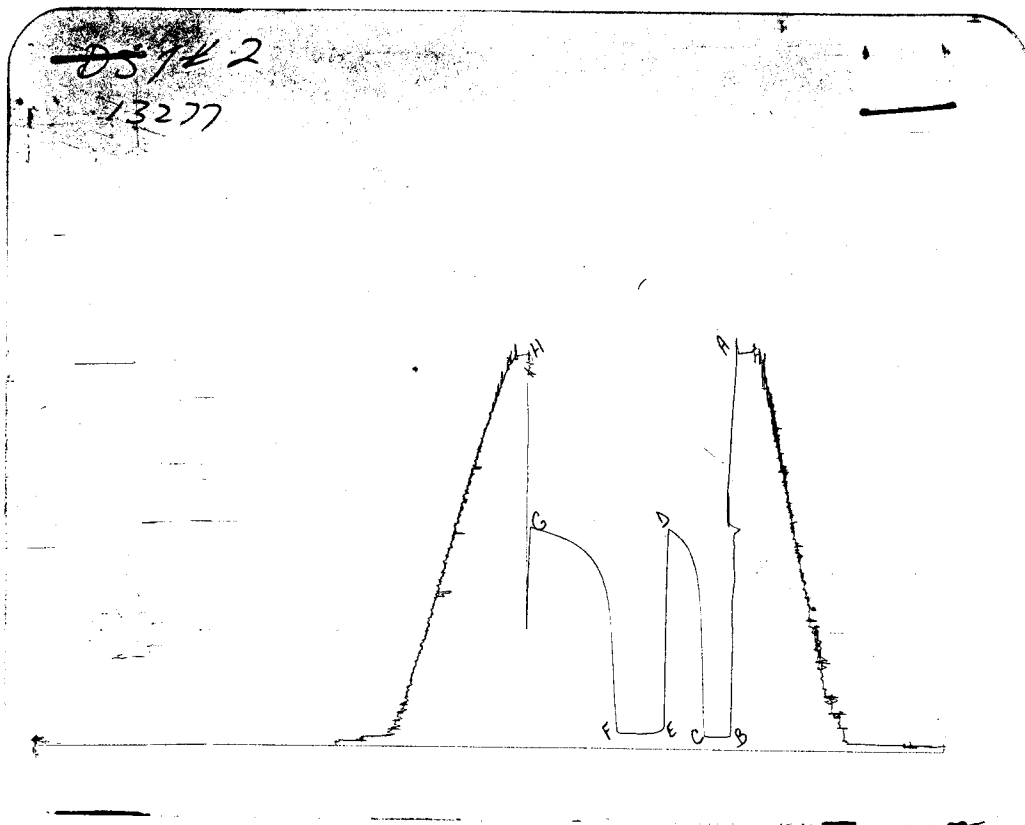
(E) Second Initial Flow Pressure 29.8 PSI AK1 Recorder No. _____ Range _____

(F) Second Final Flow Pressure 29.8 PSI @ (depth) _____ w/Clock No. _____

(G) Final Shut-in Pressure 1161.1 PSI Initial Opening 15 Final Flow 30

(H) Final Hydrostatic Mud 2060.4 PSI Initial Shut-in 30 Final Shut-in 60

Our Representative TOM HORACEK TOTAL PRICE \$ 800



POINT

This is an actual photograph of recorder chart
PRESSURE

| | FIELD READING | OFFICE READING |
|----------------------------------|------------------|-------------------|
| (A) INITIAL HYDROSTATIC MUD | 2080 | 2089.3 |
| (B) FIRST INITIAL FLOW PRESSURE | 14 | 15.2 |
| (C) FIRST FINAL FLOW PRESSURE | 14 | 15.2 |
| (D) INITIAL CLOSED-IN PRESSURE | 1184 | 1187.6 |
| (E) SECOND INITIAL FLOW PRESSURE | 27 | 29.8 |
| (F) SECOND FINAL FLOW PRESSURE | 27 | 29.8 |
| (G) FINAL CLOSED-IN PRESSURE | 1159 | 1161.1 |
| (H) FINAL HYDROSTATIC MUD | 2055 | 2060.4 |

TRILOBITE TESTING COMPANY L.L.C.

P.O. Box 362 • Hays, Kansas 67601

Test Ticket

No 4443

| | | |
|---|----------------------------|---------------------|
| Well Name & No. <u>Lena Mai #2-29</u> | Test No. <u>2</u> | Date <u>3-21-92</u> |
| Company <u>Berenco Inc.</u> | Zone Tested <u>Pawnee</u> | |
| Address <u>970 4th Financial Center Wichita Ks 67202</u> | Elevation <u>2850 (KB)</u> | |
| Co. Rep./Geo. <u>Charlie Spradlin</u> cont. <u>Berenco Drlg #2</u> | Est. Ft. of Pay <u>6'</u> | |
| Location: Sec. <u>29</u> Twp. <u>23 S</u> Rge. <u>32 W</u> Co. <u>Finnely</u> State <u>Ks</u> | | |
| No. of Copies <u>9</u> Distribution Sheet _____ Yes <input checked="" type="checkbox"/> No <input type="checkbox"/> Turnkey _____ Yes _____ No _____ Evaluation _____ | | |

| | |
|---|---|
| Interval Tested <u>4449-4476</u> | Drill Pipe Size <u>4.5 x-Hole</u> |
| Anchor Length <u>27'</u> | Top Choke — 1" _____ Bottom Choke — 3/4" _____ |
| Top Packer Depth <u>4444</u> | Hole Size — 7 7/8" _____ Rubber Size — 6 3/4" _____ |
| Bottom Packer Depth <u>4449</u> | Wt. Pipe I.D. — 2.7 Ft. Run _____ |
| Total Depth <u>4476</u> | Drill Collar — 2.25 Ft. Run <u>348'</u> |
| Mud Wt. <u>8.9</u> lb/gal. | Viscosity <u>50</u> Filtrate <u>6.6</u> |
| Tool Open @ <u>9:30 pm</u> Initial Blow <u>1/4 blow through out</u> | |

Final Blow surface blow through out

Recovery — Total Feet 30' Feet of Gas in Pipe _____ Flush Tool? NO

| Rec. _____ Feet Of _____ | % gas | % oil | % water | % mud |
|---|-------|-------|---------|-------|
| Rec. _____ Feet Of _____ | % gas | % oil | % water | % mud |
| Rec. <u>30'</u> Feet Of <u>Drlg mud</u> | % gas | % oil | % water | % mud |
| Rec. _____ Feet Of _____ | % gas | % oil | % water | % mud |
| Rec. _____ Feet Of _____ | % gas | % oil | % water | % mud |

BHT 108 °F Gravity _____ °API @ _____ °F Corrected Gravity _____ °API

RW _____ @ _____ °F Chlorides _____ ppm Recovery Chlorides 2075 ppm System

(A) Initial Hydrostatic Mud 2080 PSI Ak1 Recorder No. 13277 Range 4125

(B) First Initial Flow Pressure 14 PSI @ (depth) 4453 w/Clock No. 27594

(C) First Final Flow Pressure 14 PSI AK1 Recorder No. 11038 Range 5075

(D) Initial Shut-in Pressure 1184 PSI @ (depth) 4473 w/Clock No. 30418

(E) Second Initial Flow Pressure 27 PSI AK1 Recorder No. _____ Range _____

(F) Second Final Flow Pressure 27 PSI @ (depth) _____ w/Clock No. _____

(G) Final Shut-in Pressure 1159 PSI Initial Opening 15 Test 550.00

(H) Final Hydrostatic Mud 2055 PSI Initial Shut-in 30 Jars 500.00

Final Flow 30 Safety Joint 50.00

Final Shut-in 60 Straddle _____

Circ. Sub _____

Sampler _____

Extra Packer _____

Other _____

TOTAL PRICE \$ 500.00

Approved By Charlie B. Spradlin
Our Representative Tom Horacek

TRILOBITE TESTING COMPANY, L.L.C.

P.O. Box 362 • Hays, Kansas 67601

Drill-Stem Test Data

Well Name LENA MAI #2-29 Test No. 3 Date 3/23/92
Company BEREXCO INC. Zone Tested ST LOUIS
Address 970 4th FINANCIAL CNTR WICHITA KS Elevation 2850 K.B.
Co. Rep./Geo. CHARLIE SPRADLIN Cont. BEREDCO RIG #2 Est. Ft. of Pay 10
Location: Sec. 29 Twp. 23S Rge. 32W Co. FINNEY State KS

Interval Tested 4774-4800 Drill Pipe Size 4.5 XH
Anchor Length 26 Wt. Pipe I.D. - 2.7 Ft. Run _____
Top Packer Depth 4769 Drill Collar - 2.25 Ft. Run 348
Bottom Packer Depth 4774
Total Depth 4800

Mud Wt. 8.9 lb / gal. Viscosity 55 Filtrate 6.8

Tool Open @ 10:40 AM Initial Blow 1" BLOW-BUILT TO 10"
ISI: BLED OFF BLOW-NO BLOW BACK
Final Blow 1/2" BLOW-BUILT TO BOTTOM IN 15 MINUTES
FSI: BLED OFF BLOW-WEAK BLOW - BUILT TO 8"

Recovery - Total Feet 490 Flush Tool? NO

Rec. 2000 Feet of GAS IN PIPE

Rec. 490 Feet of GASSY MUD CUT OIL-60%GAS/30%OIL/10%MUD

Rec. _____ Feet of _____

Rec. _____ Feet of _____

Rec. _____ Feet of _____

BHT 112 °F Gravity _____ °API @ _____ °F Corrected Gravity _____ °API

RW _____ @ _____ °F Chlorides _____ ppm Recovery Chlorides 2100 ppm System

(A) Initial Hydrostatic Mud 2390.3 PSI AK1 Recorder No. 13277 Range 4125

(B) First Initial Flow Pressure 46.8 PSI @ (depth) 4778 w/Clock No. 27594

(C) First Final Flow Pressure 71.3 PSI AK1 Recorder No. 11038 Range 5075

(D) Initial Shut-in Pressure 611.8 PSI @ (depth) 4797 w/Clock No. 30418

(E) Second Initial Flow Pressure 122.8 PSI AK1 Recorder No. _____ Range _____

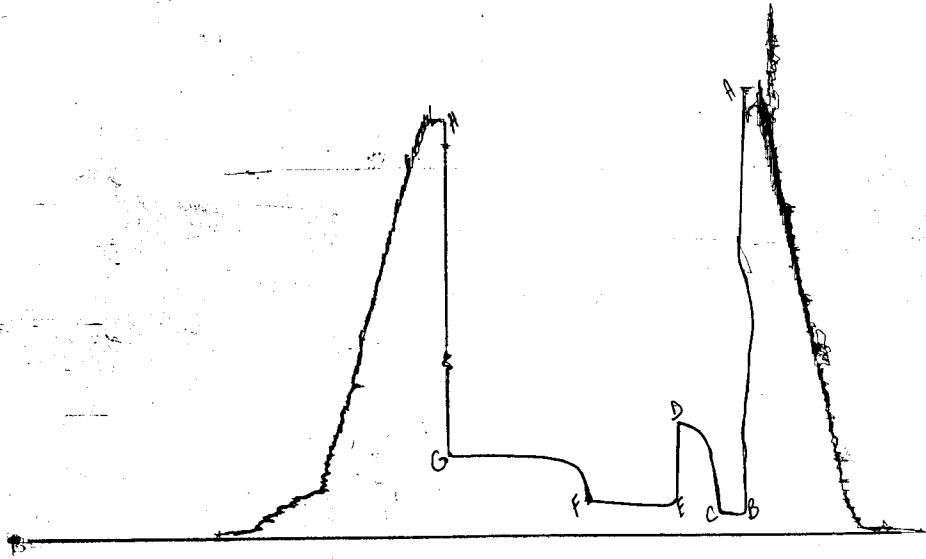
(F) Second Final Flow Pressure 160.6 PSI @ (depth) _____ w/Clock No. _____

(G) Final Shut-in Pressure 430.5 PSI Initial Opening 15 Final Flow 60

(H) Final Hydrostatic Mud 2280 PSI Initial Shut-in 30 Final Shut-in 90

Our Representative TOM HORACEK TOTAL PRICE \$ 800

DS 1#3
13277



POINT This is an actual photograph of recorder chart PRESSURE

| | FIELD READING | OFFICE READING |
|----------------------------------|------------------|-------------------|
| (A) INITIAL HYDROSTATIC MUD | 2387 | 2390.3 |
| (B) FIRST INITIAL FLOW PRESSURE | 55 | 46.8 |
| (C) FIRST FINAL FLOW PRESSURE | 68 | 71.3 |
| (D) INITIAL CLOSED-IN PRESSURE | 611 | 611.8 |
| (E) SECOND INITIAL FLOW PRESSURE | 122 | 122.8 |
| (F) SECOND FINAL FLOW PRESSURE | 149 | 160.6 |
| (G) FINAL CLOSED-IN PRESSURE | 416 | 430.5 |
| (H) FINAL HYDROSTATIC MUD | 2285 | 2280 |

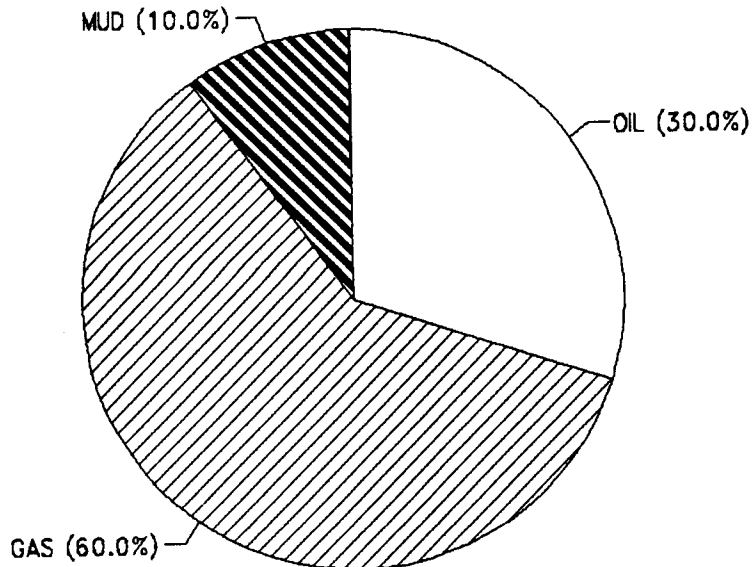
CALCULATED RECOVERY ANALYSIS

DST # 3

TICKET # 4444

| SAMPLE # | TOTAL FEET | GAS | | OIL | | WATER | | MUD | |
|--------------|------------|-----|------------|-----|------------|-------|----------|-----|-----------|
| | | % | FEET | % | FEET | % | FEET | % | FEET |
| DRILL 1 | 142 | 60 | 85.2 | 30 | 42.6 | 0 | 0 | 10 | 14.2 |
| PIPE 2 | | | 0 | | 0 | | 0 | | 0 |
| 3 | | | 0 | | 0 | | 0 | | 0 |
| 4 | | | 0 | | 0 | | 0 | | 0 |
| 5 | | | 0 | | 0 | | 0 | | 0 |
| 6 | | | 0 | | 0 | | 0 | | 0 |
| WEIGHT 1 | | | 0 | | 0 | | 0 | | 0 |
| PIPE 2 | | | 0 | | 0 | | 0 | | 0 |
| 3 | | | 0 | | 0 | | 0 | | 0 |
| 4 | | | 0 | | 0 | | 0 | | 0 |
| DRILL 1 | 348 | 60 | 208.8 | 30 | 104.4 | 0 | 0 | 10 | 34.8 |
| COLLAR 2 | | | 0 | | 0 | | 0 | | 0 |
| 3 | | | 0 | | 0 | | 0 | | 0 |
| 4 | | | 0 | | 0 | | 0 | | 0 |
| 5 | | | 0 | | 0 | | 0 | | 0 |
| TOTAL | 490 | | 294 | | 147 | | 0 | | 49 |

| | | | | |
|------------|----------|---|----------|----------|
| | | | HRS OPEN | BBL/DAY |
| BBL OIL= | 1.116288 | * | 1.25 | 21.43273 |
| BBL WATER= | 0 | * | | 0 |
| BBL MUD= | 0.372096 | | | |
| BBL GAS = | 2.232576 | | | |



COMPUTER EVALUATION BY TRILOBITE TESTING
 BEREXCO INC
 REPORT FOR DST#3 FOR THE LENA MAI #2-29
 29-23S-32W FINNEY KANSAS

TEST PARAMETERS

ELEVATION: 2850 KB EST. PAY: 10 FT
 DATUM: -1948 ZONE TESTED: ST LOUIS
 TEST INTERVAL: 4774-4800
 RECORDER DEPTH: 4797 TIME INTERVALS: 15-30-60-90
 BOTTOM HOLE TEMP: 112 VISCOSITY: 5.062121 CP
 HOLE SIZE: 7.875 IN

CALCULATIONS

CUBIC FEET OF GAS IN PIPE: 159.6788
 TOTAL FEET OF RECOVERY: 490
 BARRELS IN DRILL PIPE: 2.01924
 BARRELS IN DRILL COLLARS: 1.70172
 GAS OIL RATIO: 42.91333 CU.FT./BBL
 BUBBLE POINT PRESSURE: ; 3.832528
 TOTAL BARRELS OF RECOVERY: 3.72096
 UNCORR. INIT. PROD.: 71.44243 BBL/DAY

API GRAVITY: 31 FLUID GRADIENT: .377

CORRECTED PIPE FILLUP: 425.9947
 CORR. BARRELS OF RECOVERY: 2.79666 BBL
 INITIAL PRODUCTION CORRECTED TO FINAL FLOW PRESSURE: 53.69588 BBL/DAY
 INITIAL PRODUCTION CORRECTED TO PSEUDO STEADY FLOW STATE
 15.12917

INITIAL SLOPE 353.41 PSI/CYCLE
 INITIAL P* 674 PSI

FINAL SLOPE 20.7 PSI/CYCLE
 FINAL P* 436 PSI

TRANSMISSIBILITY 421.785 (MD.-FT./CP.)
 PERMEABILITY 213.5127 (MD.)
 INDICATED FLOW CAPACITY 2135.127 (MD.FT)
 PRODUCTIVITY INDEX .476617 (BARRELS/DAY/PSI)
 DAMAGE RATIO 2.434696
 RADIUS OF INVESTIGATION 126.5443 (FT.)
 THEORETICAL POTENTIAL FROM FINAL FLOW PRESSURE 130.7331 BBL/DAY
 THEORETICAL POTENTIAL FROM PSEUDO STEADY FLOW STATE 36.83492 BBL/DAY
 POTENTIOMETRIC SURFACE -935.916 (FT.)
 DRAWDOWN FACTOR 35.31157 (%)

LENA MAI #2-29 DST #
 INITIAL SHUTIN
 15 FLOW TIME

Slope -353.41 psi/cycle
 P * 674 psi

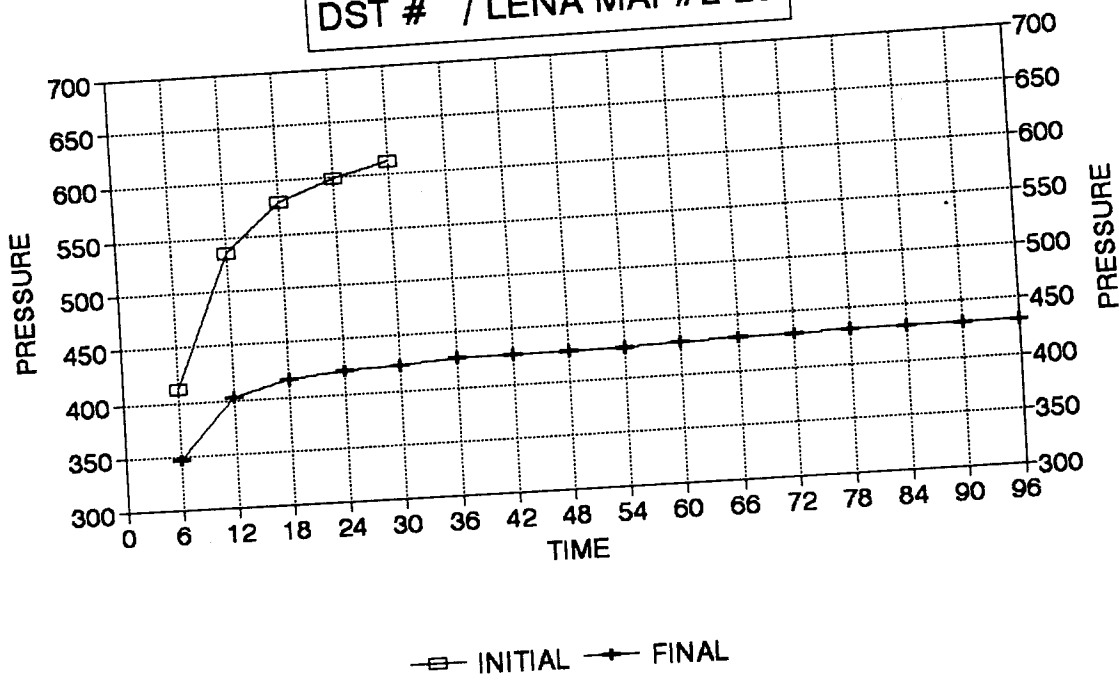
| TIME(MIN) | Pws (psi) | Horn T | Log Horn T | <> PRESSURE |
|-----------|-----------|--------|------------|-------------|
| | | | | 412.1 |
| 6 | 412.1 | 4 | 0.544 | 124.4 |
| 12 | 536.5 | 2 | 0.352 | 44.5 |
| 18 | 581.0 | 2 | 0.263 | 17.8 |
| X 24 | 598.8 | 2 | 0.211 | 13.0 |
| X 30 | 611.8 | 2 | 0.176 | |

LENA MAI #2-29 DST #
 FINAL SHUTIN
 75 TOTAL FLOW

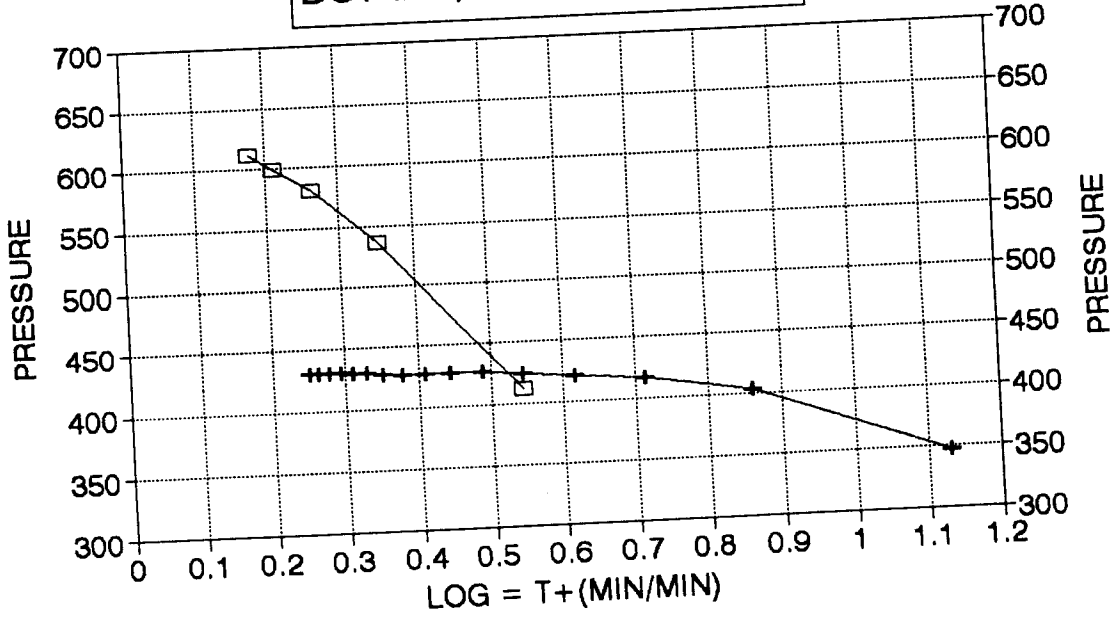
Slope -20.70 psi/cycle
 P * 436 psi

| TIME(MIN) | Pws (psi) | Horn T | Log Horn T | <> PRESSURE |
|-----------|-----------|--------|------------|-------------|
| | | | | 347.5 |
| 6 | 347.5 | 14 | 1.130 | 55.4 |
| 12 | 402.9 | 7 | 0.860 | 13.2 |
| 18 | 416.1 | 5 | 0.713 | 5.2 |
| 24 | 421.3 | 4 | 0.615 | 2.7 |
| 30 | 424.0 | 4 | 0.544 | 2.6 |
| 36 | 426.6 | 3 | 0.489 | 0.0 |
| 42 | 426.6 | 3 | 0.445 | 0.0 |
| 48 | 426.6 | 3 | 0.409 | 0.4 |
| 54 | 427.0 | 2 | 0.378 | 1.4 |
| X 60 | 428.4 | 2 | 0.352 | 0.8 |
| 66 | 429.2 | 2 | 0.330 | 0.0 |
| 72 | 429.2 | 2 | 0.310 | 1.3 |
| 78 | 430.5 | 2 | 0.293 | 0.0 |
| 84 | 430.5 | 2 | 0.277 | 0.0 |
| 90 | 430.5 | 2 | 0.263 | 0.0 |
| X 96 | 430.5 | 2 | 0.251 | |

DELTA T DELTA P
DST # / LENA MAI #2-29



HORNER PLOT
DST # / LENA MAI #2-29



INITIAL FLOW

RECORDER # 11038
DST #

| DT(MIN) | PRESSURE | <> | PRESSURE |
|---------|----------|----|----------|
| 0 | 46.8 | | 46.8 |
| 3 | 49.6 | | 2.799999 |
| 6 | 52.3 | | 2.700001 |
| 9 | 52.7 | | .4000015 |
| 12 | 63.2 | | 10.5 |
| 15 | 71.3 | | 8.100003 |

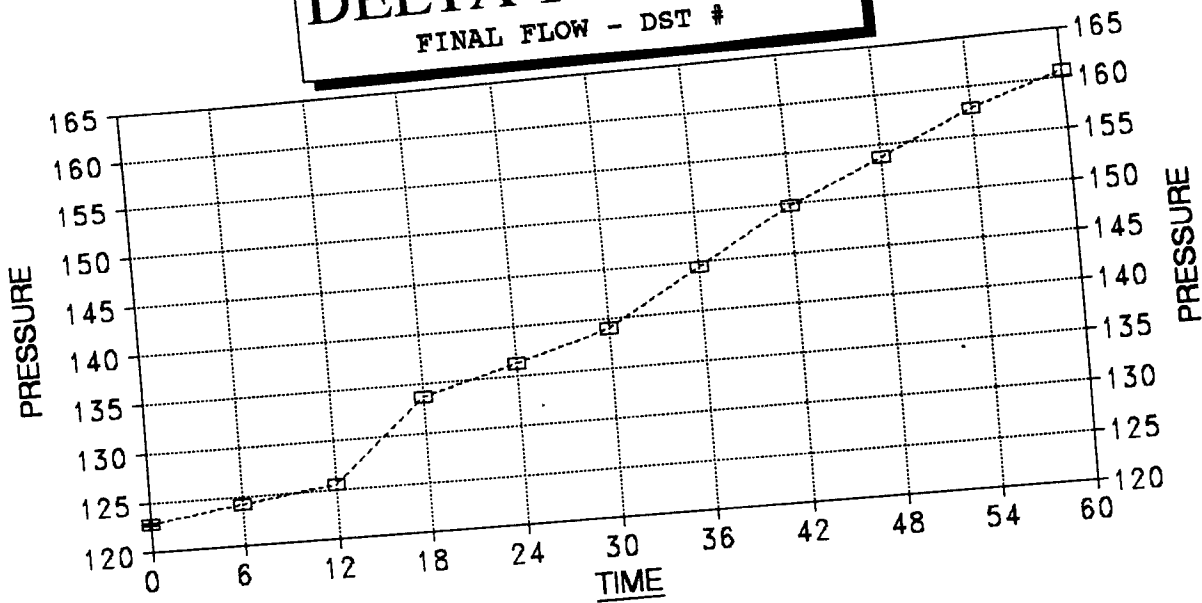
FINAL FLOW

RECORDER # 11038
DST #

| DT(MIN) | PRESSURE | <> | PRESSURE |
|---------|----------|----|----------|
| 0 | 122.8 | | 122.8 |
| 6 | 124.2 | | 1.399994 |
| 12 | 125.5 | | 1.300003 |
| 18 | 133.6 | | 8.100006 |
| 24 | 136.3 | | 2.699997 |
| 30 | 139 | | 2.699997 |
| 36 | 144.4 | | 5.399994 |
| 42 | 149.8 | | 5.400009 |
| 48 | 153.8 | | 4 |
| 54 | 157.9 | | 4.099991 |
| 60 | 160.6 | | 2.700012 |

DELTA T DELTA P

FINAL FLOW - DST #



--□-- LENA MAI #2-29

INITIAL PRODUCTION CORRECTED TO PSEUDO STEADY FLOW STATE 15.12917 BBL/DAY

TRILOBITE TESTING COMPANY L.L.C.

P.O. Box 362 • Hays, Kansas 67601

Test Ticket

No 4444

Well Name & No. Lena Mai #2-29 Test No. 3 Date 3-23-92
Company Berenco Inc. Zone Tested St Louis
Address 970 4th Financial Center Wichita Ks. 67202 Elevation 2850 (K.B)
Co. Rep./Geo. Charlie Spradlin cont. Berenco Drly #2 Est. Ft. of Pay 10'
Location: Sec. 29 Twp. 23 S Rge. 32 W Co. Finney State Ks.
No. of Copies 9 Distribution Sheet Yes No Turnkey Yes No Evaluation

Interval Tested 4774-4800 Drill Pipe Size 4.5 x-Hole
Anchor Length 26' Top Choke — 1" Bottom Choke — 1/4"
Top Packer Depth 4769 Hole Size — 7 7/8" Rubber Size — 6 3/4"
Bottom Packer Depth 4774 Wt. Pipe I.D. — 2.7 Ft. Run -
Total Depth 4800 Drill Collar — 2.25 Ft. Run 348'
Mud Wt. 8.9 lb/gal. Viscosity 55 Filtrate 6.8
Tool Open @ 10:40 am Initial Blow 1 in blow - built to 10 in.

ISI - bled off blow - NO blow back
Final Blow 1/2 blow - built to bottom in 15 min
F.S.J. - bled off blow - weak blow - built to 8 in.

Recovery — Total Feet 490' Feet of Gas in Pipe 2000' Flush Tool? NO

| Rec. | Feet Of | %gas | %oil | %water | %mud |
|------|-------------------------------------|----------------|----------------|------------------|----------------|
| Rec. | Feet Of | %gas | %oil | %water | %mud |
| Rec. | <u>490</u> Feet Of <u>Gassy MCO</u> | <u>60</u> %gas | <u>30</u> %oil | <u>10</u> %water | <u>10</u> %mud |
| Rec. | Feet Of | %gas | %oil | %water | %mud |
| Rec. | Feet Of | %gas | %oil | %water | %mud |

BHT 112° °F Gravity _____ °API @ _____ °F Corrected Gravity _____ °API
RW _____ @ _____ °F Chlorides _____ ppm Recovery Chlorides 2100 ppm System
(A) Initial Hydrostatic Mud 2387 PSI AK1 Recorder No. 13277 Range 4125
(B) First Initial Flow Pressure 55 PSI @ (depth) 4778 w/Clock No. 27594
(C) First Final Flow Pressure 68 PSI AK1 Recorder No. 41038 Range 5075
(D) Initial Shut-In Pressure 611 PSI @ (depth) 4797 w/Clock No. 30418
(E) Second Initial Flow Pressure 122 PSI AK1 Recorder No. _____ Range _____
(F) Second Final Flow Pressure 149 PSI @ (depth) _____ w/Clock No. _____
(G) Final Shut-In Pressure 416 PSI Initial Opening 15 Test
(H) Final Hydrostatic Mud 2285 PSI Initial Shut-In 30 Jars

Final Flow 60 Safety Joint
Final Shut-In 90 Straddle _____
Circ. Sub _____
Sampler _____

Approved By Charlie Spradlin
Our Representative Tom Horvath
Extra Packer _____
Other _____
TOTAL PRICE \$ _____