

4-23-37W
ORIGINAL

CONFIDENTIAL

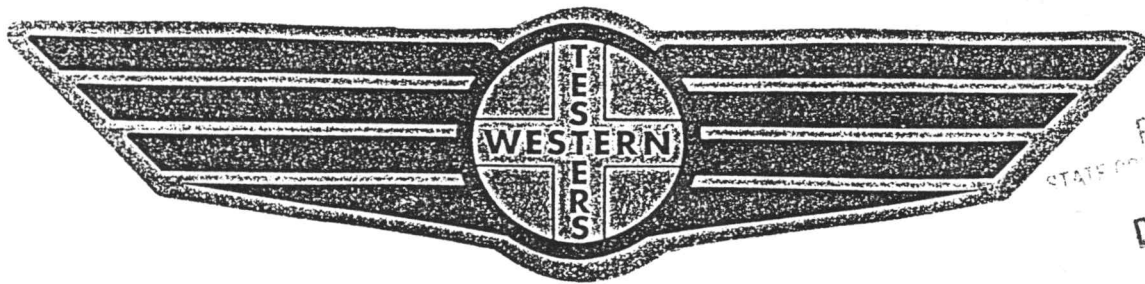
FORMATION

TEST

REPORT

KOL
DEC 4
CONFIDENTIAL

DEC 4
CONFIDENTIAL



Home Office:

Wichita, Kansas 67201

P.O. Box 1599

Phone 1 - 800-688- 7021

RELEASED

FEB 14 1995

FROM CONFIDENTIAL

RECEIVED
STATE COMMISSION
DEC 7 1992
REGISTRATION DIVISION
Wichita, Kansas

COMPANY BEREXCO, INC. LEASE & WELL NO. SHANKLE #1-9 SEC. 9 TWP. 23S RGE. 37W TEST NO. 1 DATE 8/27/92

DST REPORT

GENERAL INFORMATION

DATE : 8/27/92	TICKET : 19516
CUSTOMER : BEREXCO, INC.	LEASE : SHANKLE
WELL : 1-9 TEST: 1	GEOLOGIST: GREVES
ELEVATION: 3307 KB	FORMATION: MORROW
SECTION : 9	TOWNSHIP : 23S
RANGE : 37W COUNTY: KEARNY	STATE : KS
GAUGE SN#: 3849 RANGE : 4200	CLOCK : 12

WELL INFORMATION

PERFORATION INTERVAL FROM: 4685.00 ft	TO: 4740.00 ft	TVD: 4740.0 ft
DEPTH OF SELECTIVE ZONE:		TEST TYPE: OIL
DEPTH OF RECORDERS: 4697.0 ft	4700.0 ft	
TEMPERATURE: 121.0		

DRILL COLLAR LENGTH: 579.0 ft	I.D.:	2.250 in
WEIGHT PIPE LENGTH : 0.0 ft	I.D.:	0.000 in
DRILL PIPE LENGTH : 4078.0 ft	I.D.:	3.800 in
TEST TOOL LENGTH : 28.0 ft	TOOL SIZE :	5.500 in
ANCHOR LENGTH : 55.0 ft	ANCHOR SIZE:	5.500 in
SURFACE CHOKE SIZE : 0.750 in	BOTTOM CHOKE SIZE:	0.750 in
MAIN HOLE SIZE : 7.875 in	TOOL JOINT SIZE :	4.5XH
PACKER DEPTH: 4680.0 ft	SIZE:	6.630 in
PACKER DEPTH: 4685.0 ft	SIZE:	6.630 in
PACKER DEPTH: 0.0 ft	SIZE:	0.000 in
PACKER DEPTH: 0.0 ft	SIZE:	0.000 in

MUD INFORMATION

DRILLING CON. : BEREDCO RIG 4	VISCOSITY : 55.00 cp
MUD TYPE : CHEMICAL	WATER LOSS: 8.400 cc
WEIGHT : 8.900 ppg	
CHLORIDES : 2700 ppm	SERIAL NUMBER: 411
JARS-MAKE : W.T.C.	REVERSED OUT?: NO
DID WELL FLOW?: NO	

COMMENTS

Comment

INITIAL FLOW PERIOD STRONG BLOW, BOTTOM OF BUCKET
 IN 1 MINUTE. FINAL FLO PERIOD STRONG BLOW IN 1 1/2
 MINUTES. FINAL SHUT-IN PERIOD GAS TO SURFACE IN

ORIGINAL

DST REPORT (CONTINUED)

NOL

DEC 4

CONFIDENTIAL

COMMENTS (CONTINUED)

Comment

15 MINUTES.

FLUID RECOVERY

Feet of Fluid	% Oil	% Gas	% Water	% Mud	Comments
830.0	100.0	0.0	0.0	0.0	CLEAN GASSY OIL
0.0	0.0	0.0	0.0	0.0	36 GRAVITY AT 60 DEGREES
450.0	46.0	38.0	0.0	16.0	S/MUD CUT, H/GAS CUT OIL

RATE INFORMATION

OIL VOLUME:	11.4847 STB	TOTAL FLOW TIME:	75.0000 min.
GAS VOLUME:	4.7216 SCF	AVERAGE OIL RATE:	227.3051 STB/D
MUD VOLUME:	0.3541 STB	AVERAGE WATER RATE:	0.0000 STB/D
WATER VOLUME:	0.0000 STB		
TOTAL FLUID :	11.8388 STB		

FIELD TIME & PRESSURE INFORMATION

INITIAL HYDROSTATIC PRESSURE: 2286.00

Description	Duration	p1	p End
INITIAL FLOW	15.00	344.00	408.00
INITIAL SHUT-IN	30.00		482.00
FINAL FLOW	60.00	451.00	482.00
FINAL SHUT-IN	120.00		482.00

FINAL HYDROSTATIC PRESSURE: 2222.00

RECEIVED
KANSAS CORPORATION COMMISSION

DEC 07 1992

REGISTRATION DIVISION
TOPEKA, KS

RELEASED

FEB 14 1995

FROM CONFIDENTIAL

DST REPORT (CONTINUED)

OFFICE TIME & PRESSURE INFORMATION

INITIAL HYDROSTATIC PRESSURE: 2292.00

Description	Duration	p1	p End
INITIAL FLOW	15.00	354.00	409.00
INITIAL SHUT-IN	30.00		488.00
FINAL FLOW	60.00	457.00	498.00
FINAL SHUT-IN	123.00		498.00
FINAL HYDROSTATIC PRESSURE:	2215.00		

REBASED

100 A 1 111

FROM CONVENTION

PRESSURE TRANSIENT REPORT

NOL

DEC 4
CONFIDENTIAL

GENERAL INFORMATION

DATE : 8/27/92	TICKET : 19516
CUSTOMER : BEREXCO, INC.	LEASE : SHANKLE
WELL : 1-9 TEST: 1	GEOLOGIST: GREVES
ELEVATION: 3307 KB	FORMATION: MORROW
SECTION : 9	TOWNSHIP : 23S
RANGE : 37W COUNTY: KEARNY	STATE : KS
GAUGE SN#: 3849 RANGE : 4200	CLOCK : 12

INITIAL FLOW

Time (min)	Pressure	Delta P
0.00	354.00	354.00
5.00	376.00	22.00
10.00	385.00	9.00
15.00	409.00	24.00

RECEIVED
KANSAS CORPORATION COMMISSION
DEC 07 1992
CONSERVATION DIVISION
WICHITA, KS

INITIAL SHUT IN

Time (min)	Pressure	Delta P	Horner T
3.00	473.00	473.00	0.00
6.00	480.00	7.00	0.00
9.00	484.00	4.00	0.00
12.00	486.00	2.00	0.00
15.00	486.00	0.00	0.00
18.00	486.00	0.00	0.00
21.00	487.00	1.00	0.00
24.00	487.00	0.00	0.00
27.00	488.00	1.00	0.00
30.00	488.00	0.00	0.00

FINAL FLOW

Time (min)	Pressure	Delta P
0.00	457.00	457.00
5.00	461.00	4.00
10.00	468.00	7.00
15.00	478.00	10.00

RELEASED

DEC 14 1992

FROM CONFIDENTIAL

PRESSURE TRANSIENT REPORT (CONTINUED)

FINAL FLOW (CONTINUED)

<u>Time (min)</u>	<u>Pressure</u>	<u>Delta P</u>
20.00	483.00	5.00
25.00	487.00	4.00
30.00	490.00	3.00
35.00	493.00	3.00
40.00	495.00	2.00
45.00	496.00	1.00
50.00	497.00	1.00
55.00	498.00	1.00
60.00	498.00	0.00

FINAL SHUT IN

<u>Time (min)</u>	<u>Pressure</u>	<u>Delta P</u>	<u>Horner T</u>
3.00	498.00	498.00	0.00
6.00	498.00	0.00	0.00
9.00	498.00	0.00	0.00
12.00	498.00	0.00	0.00
15.00	498.00	0.00	0.00
18.00	498.00	0.00	0.00
21.00	498.00	0.00	0.00
24.00	498.00	0.00	0.00
27.00	498.00	0.00	0.00
30.00	498.00	0.00	0.00
33.00	498.00	0.00	0.00
36.00	498.00	0.00	0.00
39.00	498.00	0.00	0.00
42.00	498.00	0.00	0.00
45.00	498.00	0.00	0.00
48.00	498.00	0.00	0.00
51.00	498.00	0.00	0.00
54.00	498.00	0.00	0.00
57.00	498.00	0.00	0.00
60.00	498.00	0.00	0.00
63.00	498.00	0.00	0.00
66.00	498.00	0.00	0.00
69.00	498.00	0.00	0.00
72.00	498.00	0.00	0.00
75.00	498.00	0.00	0.00
78.00	498.00	0.00	0.00
81.00	498.00	0.00	0.00
84.00	498.00	0.00	0.00
87.00	498.00	0.00	0.00

03/20/19

03/20/19

03/20/19

ORIGINAL

PRESSURE TRANSIENT REPORT (CONTINUED)

FINAL SHUT IN (CONTINUED)

<u>Time (min)</u>	<u>Pressure</u>	<u>Delta P</u>	<u>Horner T</u>
90.00	498.00	0.00	0.00
93.00	498.00	0.00	0.00
96.00	498.00	0.00	0.00
99.00	498.00	0.00	0.00
102.00	498.00	0.00	0.00
105.00	498.00	0.00	0.00
108.00	498.00	0.00	0.00
111.00	498.00	0.00	0.00
114.00	498.00	0.00	0.00
117.00	498.00	0.00	0.00
120.00	498.00	0.00	0.00
123.00	498.00	0.00	0.00

KOL

DEC 4

CONFIDENTIAL

RECEIVED
KANSAS CORPORATION COMMISSION

DEC 07 1992

CONSERVATION DIVISION
WICHITA, KS

RELEASED

FEB 14 1995

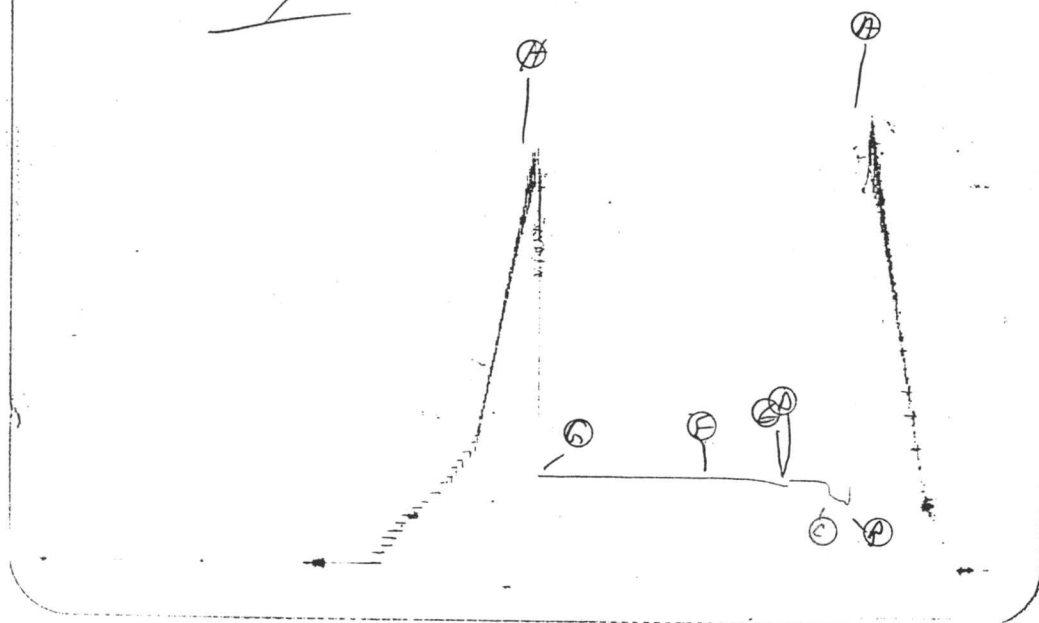
FROM CONFIDENTIAL

KA 19516

83849 DST 1

ORIGINAL

I



NOV
DEC 4
CONFIDENTIAL

Inside Recorder

KA 19516

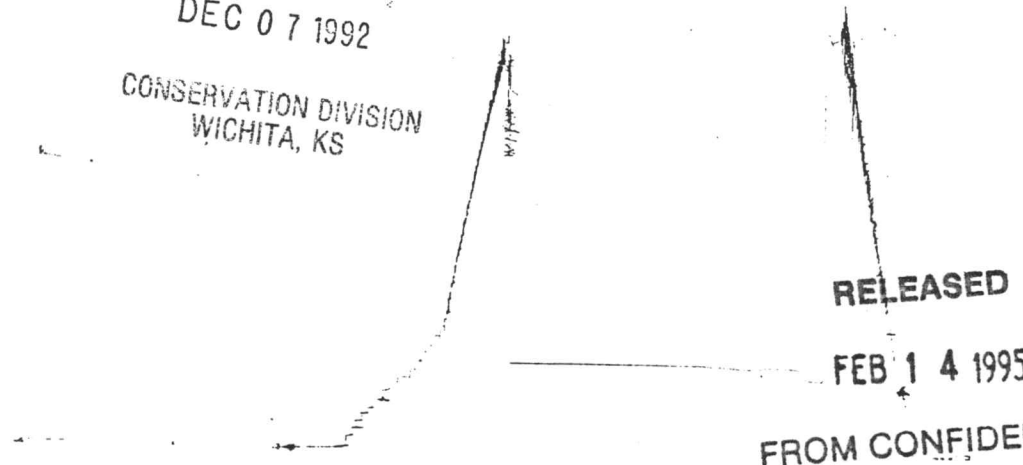
2604 DST 1

9

RECEIVED
KANSAS CORPORATION COMMISSION

DEC 07 1992

CONSERVATION DIVISION
WICHITA, KS



RELEASED

FEB 14 1995

FROM CONFIDENTIAL

Outside Recorder

ORIGINAL

CONFIDENTIAL

FORMATION

TEST

REPORT

DEC 4 DEC 6
CONFIDENTIAL **CONFIDENTIAL**

COMPANY **BEREXCO, INC.**

LEASE & WELL NO.

SHANKLE #1-9

SEC. 9

TWP. 23S

RGE. 37W

TEST NO. 2

DATE 8/28/92



Home Office:

Wichita, Kansas 67201

P.O. Box 1599

Phone 1 - 800-688-7021

RELEASED

FEB 14 1995

FROM CONFIDENTIAL

RECEIVED
STATE CORPORATION COMMISSION

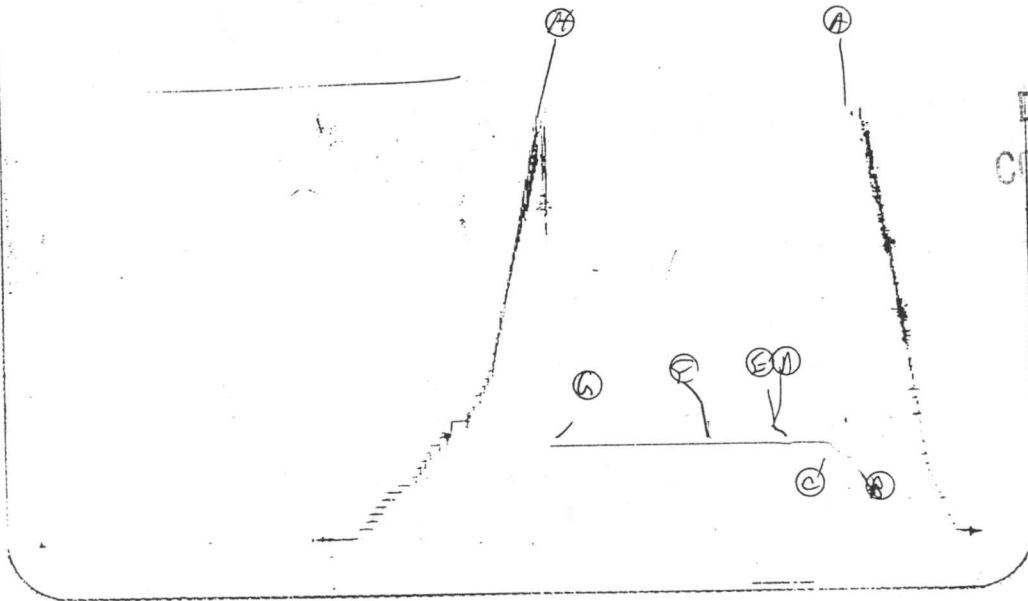
DEC 7 1992

REGULATION DIVISION
WICHITA, KANSAS

JK 19517
Z

~~3849 DST 2~~

9 ORIGINAL



NOV
DEC 6
CONFIDENTIAL

Inside Recorder

JK 19517

~~2604 DST 2~~

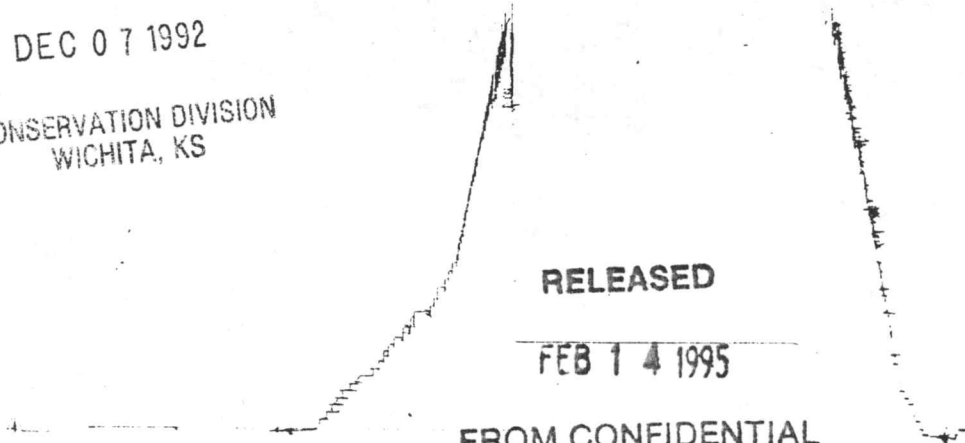
0

9

RECEIVED
KANSAS CORPORATION COMMISSION

DEC 07 1992

CONSERVATION DIVISION
WICHITA, KS



RELEASED

FEB 14 1995

FROM CONFIDENTIAL

Outside Recorder

COMPANY BEREXCO, INC. LEASE & WELL NO. SHANKLE #1-9 SEC. 9 TWP. 23S RGE. 37W TEST NO. 2 DATE 8/28/92

ORIGINAL

FORMATION TEST

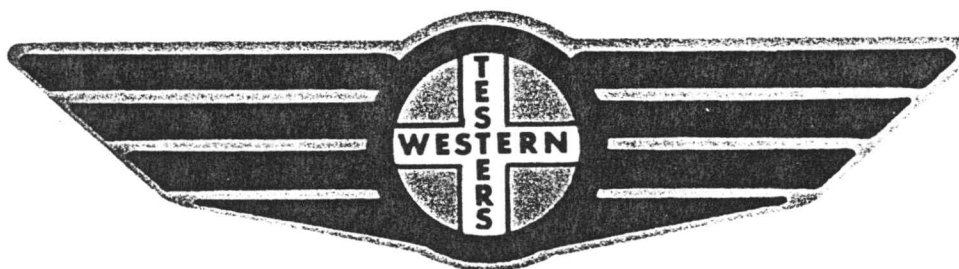
RCL
DEC 4
CONFIDENTIAL

REPORT

RECEIVED
KANSAS CORPORATION COMMISSION

DEC 07 1992

CONSERVATION DIVISION
WICHITA, KS



Home Office:

Wichita, Kansas 67201

P.O. Box 1599

Phone (316) 262-5861

RELEASED

FEB 1-4 1995

FROM CONFIDENTIAL

DST REPORT

NOL

DEC 4

CONFIDENTIAL

GENERAL INFORMATION

DATE : 8/28/92
 CUSTOMER : BEREXCO, INC.
 WELL : 1-9 TEST: 2
 ELEVATION: 3307 KB
 SECTION : 9
 RANGE : 37W COUNTY: KEARNY
 GAUGE SN#: 3849 RANGE : 4200

TICKET : 19517
 LEASE : SHANKLE
 GEOLOGIST: GREVES
 FORMATION: MORROW
 TOWNSHIP : 23S
 STATE : KS
 CLOCK : 12

WELL INFORMATION

PERFORATION INTERVAL FROM: 4740.00 ft TO: 4750.00 ft TVD: 4750.0 ft
 DEPTH OF SELECTIVE ZONE: TEST TYPE: OIL
 DEPTH OF RECORDERS: 4743.0 ft 4747.0 ft
 TEMPERATURE: 121.0

DRILL COLLAR LENGTH:	610.0 ft	I.D.:	2.250 in
WEIGHT PIPE LENGTH :	0.0 ft	I.D.:	0.000 in
DRILL PIPE LENGTH :	4102.0 ft	I.D.:	3.800 in
TEST TOOL LENGTH :	28.0 ft	TOOL SIZE :	5.500 in
ANCHOR LENGTH :	10.0 ft	ANCHOR SIZE:	5.500 in
SURFACE CHOKE SIZE :	0.750 in	BOTTOM CHOKE SIZE:	0.750 in
MAIN HOLE SIZE :	7.875 in	TOOL JOINT SIZE :	4.5XH
PACKER DEPTH:	4735.0 ft	SIZE:	6.630 in
PACKER DEPTH:	4740.0 ft	SIZE:	6.630 in
PACKER DEPTH:	0.0 ft	SIZE:	0.000 in
PACKER DEPTH:	0.0 ft	SIZE:	0.000 in

MUD INFORMATION

DRILLING CON. :	BEREDCO RIG 4	VISCOSITY :	47.00 cp
MUD TYPE :	CHEMICAL	WATER LOSS:	6.800 cc
WEIGHT :	8.800 ppg	SERIAL NUMBER: 411	
CHLORIDES :	2100 ppm	REVERSED OUT?: NO	
JARS-MAKE :	W.T.C.		
DID WELL FLOW?:	NO		

COMMENTS

Comment

INITIAL FLOW PERIOD STRONG BLOW, BOTTOM OF BUCKET
 IN 1 MINUTE.
 FINAL FLOW PERIOD STRONG BLOW IN 4 MINUTES.

RELEASED

FEB 14 1995

RECEIVED
 KANSAS CONSERVATION COMMISSION

FROM CONFIDENTIAL

DEC 07 1992

CONSERVATION DIVISION
 MONTA, KS

RECEIVED

DST REPORT (CONTINUED)

KANSAS CORPORATION

DEC 07 1992

DEC 6

COMMENTS (CONTINUED)

CONSERVATION DIVISION CONFIDENTIAL
WICHITA, KS

Comment

FINAL SHUT-IN PERIOD GAS TO SURFACE IN 1 HR. AND 50 MINUTES.

FLUID RECOVERY

Feet of Fluid	% Oil	% Gas	% Water	% Mud	Comments
1400.0	100.0	0.0	0.0	0.0	CLEAN GASSY OIL
0.0	0.0	0.0	0.0	0.0	35 GRAVITY AT 60 DEGREES
160.0	33.0	15.0	16.0	40.0	GAS, MUD & WATER CUT OIL
90.0	12.0	32.0	16.0	40.0	OIL, GAS, & WATER CUT MUD
0.0	0.0	0.0	0.0	0.0	CHLORIDES 11000 P.P.M.

RATE INFORMATION

OIL VOLUME:	16.6705	STB	TOTAL FLOW TIME:	75.0000	min.
GAS VOLUME:	1.4579	SCF	AVERAGE OIL RATE:	325.5989	STB/D
MUD VOLUME:	0.4917	STB	AVERAGE WATER RATE:	7.6920	STB/D
WATER VOLUME:	0.1967	STB			
TOTAL FLUID :	17.3589	STB			

FIELD TIME & PRESSURE INFORMATION

INITIAL HYDROSTATIC PRESSURE: 2292.00

Description	Duration	p1	p End
INITIAL FLOW	15.00	404.00	468.00
INITIAL SHUT-IN	30.00		500.00
FINAL FLOW	60.00	489.00	500.00
FINAL SHUT-IN	120.00		500.00

FINAL HYDROSTATIC PRESSURE: 2228.00

RELEASED

FEB 14 1995

FROM CONFIDENTIAL

DST REPORT (CONTINUED)

KDE

DEC 6

CONFIDENTIAL

OFFICE TIME & PRESSURE INFORMATION

INITIAL HYDROSTATIC PRESSURE: 2286.00

Description	Duration	p1	p End
INITIAL FLOW	15.00	423.00	479.00
INITIAL SHUT-IN	30.00		509.00
FINAL FLOW	60.00	503.00	510.00
FINAL SHUT-IN	120.00		510.00

FINAL HYDROSTATIC PRESSURE: 2214.00

RECEIVED
KANSAS CORPORATION COMMISSION

DEC 07 1992

CONSERVATION DIVISION
WICHITA, KS

PRESSURE TRANSIENT REPORT

DEC 4

CONFIDENTIAL

GENERAL INFORMATION

DATE : 8/28/92
 CUSTOMER : BEREXCO, INC.
 WELL : 1-9 TEST: 2
 ELEVATION: 3307 KB
 SECTION : 9
 RANGE : 37W COUNTY: KEARNY
 GAUGE SN#: 3849 RANGE : 4200

TICKET : 19517
 LEASE : SHANKLE
 GEOLOGIST: GREVES
 FORMATION: MORROW
 TOWNSHIP : 23S
 STATE : KS
 CLOCK : 12

INITIAL FLOW

Time (min)	Pressure	Delta P
0.00	423.00	423.00
5.00	423.00	0.00
10.00	445.00	22.00
15.00	479.00	34.00

RECEIVED

KANSAS CORPORATION COMMISSION

DEC 07 1992

CONSERVATION DIVISION
WICHITA, KS

INITIAL SHUT IN

Time (min)	Pressure	Delta P	Horner T
3.00	500.00	500.00	0.00
6.00	505.00	5.00	0.00
9.00	508.00	3.00	0.00
12.00	508.00	0.00	0.00
15.00	508.00	0.00	0.00
18.00	508.00	0.00	0.00
21.00	509.00	1.00	0.00
24.00	509.00	0.00	0.00
27.00	509.00	0.00	0.00
30.00	509.00	0.00	0.00

FINAL FLOW

Time (min)	Pressure	Delta P
0.00	503.00	503.00
5.00	504.00	1.00
10.00	506.00	2.00
15.00	508.00	2.00

RELEASED

FEB 14 1995

FROM CONFIDENTIAL

PRESSURE TRANSIENT REPORT (CONTINUED)

DEC 7
CONFIDENTIAL

FINAL FLOW (CONTINUED)

Time (min)	Pressure	Delta P
20.00	510.00	2.00
25.00	510.00	0.00
30.00	510.00	0.00
35.00	510.00	0.00
40.00	510.00	0.00
45.00	510.00	0.00
50.00	510.00	0.00
55.00	510.00	0.00
60.00	510.00	0.00

RECEIVED
KANSAS CORPORATION
DEC 07 1992
CONSERVATION DIVISION
WICHITA, KS

FINAL SHUT IN

Time (min)	Pressure	Delta P	Horner T
3.00	510.00	510.00	0.00
6.00	510.00	0.00	0.00
9.00	510.00	0.00	0.00
12.00	510.00	0.00	0.00
15.00	510.00	0.00	0.00
18.00	510.00	0.00	0.00
21.00	510.00	0.00	0.00
24.00	510.00	0.00	0.00
27.00	510.00	0.00	0.00
30.00	510.00	0.00	0.00
33.00	510.00	0.00	0.00
36.00	510.00	0.00	0.00
39.00	510.00	0.00	0.00
42.00	510.00	0.00	0.00
45.00	510.00	0.00	0.00
48.00	510.00	0.00	0.00
51.00	510.00	0.00	0.00
54.00	510.00	0.00	0.00
57.00	510.00	0.00	0.00
60.00	510.00	0.00	0.00
63.00	510.00	0.00	0.00
66.00	510.00	0.00	0.00
69.00	510.00	0.00	0.00
72.00	510.00	0.00	0.00
75.00	510.00	0.00	0.00
78.00	510.00	0.00	0.00
81.00	510.00	0.00	0.00
84.00	510.00	0.00	0.00
87.00	510.00	0.00	0.00

RELEASED

FEB 14 1995

FROM CONFIDENTIAL

ORIGINAL

PRESSURE TRANSIENT REPORT (CONTINUED)

DEC 4

FINAL SHUT IN (CONTINUED)

CONFIDENTIAL

<u>Time (min)</u>	<u>Pressure</u>	<u>Delta P</u>	<u>Horner T</u>
90.00	510.00	0.00	0.00
93.00	510.00	0.00	0.00
96.00	510.00	0.00	0.00
99.00	510.00	0.00	0.00
102.00	510.00	0.00	0.00
105.00	510.00	0.00	0.00
108.00	510.00	0.00	0.00
111.00	510.00	0.00	0.00
114.00	510.00	0.00	0.00
117.00	510.00	0.00	0.00
120.00	510.00	0.00	0.00

RECEIVED
KANSAS CORPORATION COMMISSION

DEC 07 1992

CONSERVATION DIVISION
WICHITA, KS

RELEASED

FEB 14 1995

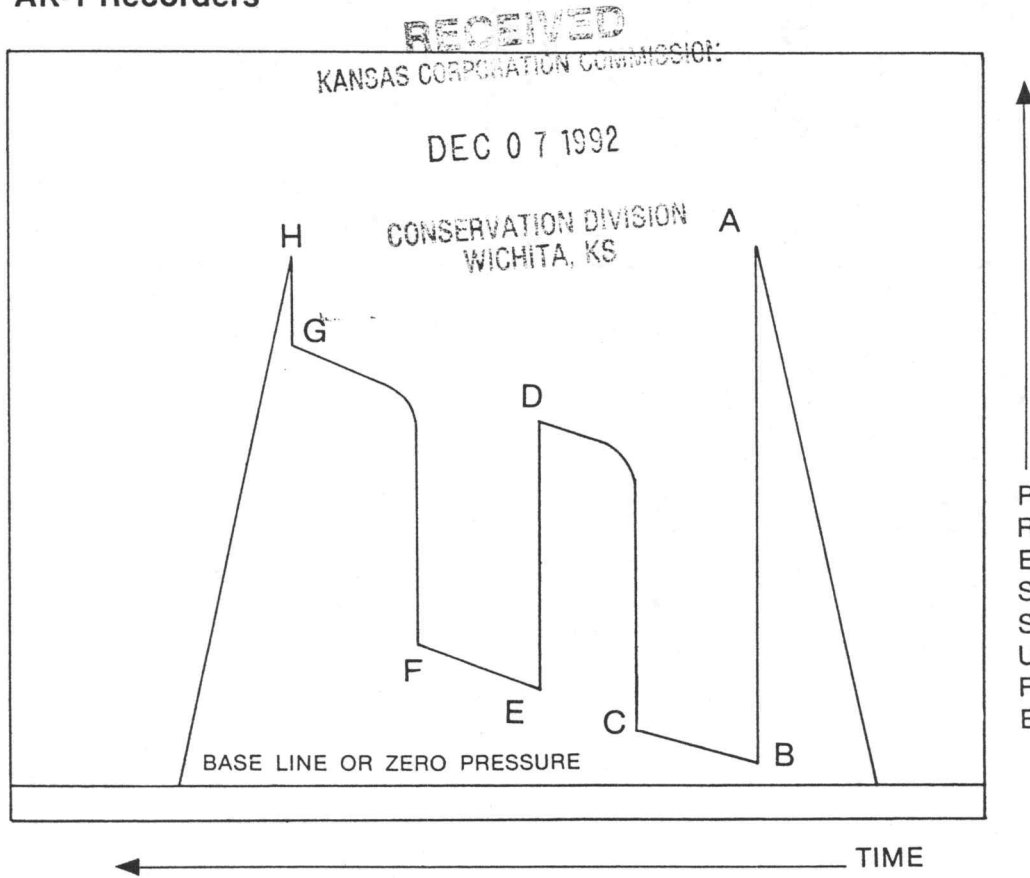
FROM CONFIDENTIAL

ORIGINAL

COMPANY TERMS

Western Testing Co., Inc. shall not be liable for damages of any kind to the property or personnel of the one for whom a test is made or for any loss suffered or sustained directly or indirectly through the use of its equipment, of its statements or opinion concerning the results of any test. Tools lost or damaged in the hole shall be paid at cost by the party for whom the test is made.

AK-1 Recorders



A - Initial Hydrostatic
B - First Initial Flow
C - First Final Flow
D - Initial Shut-In

E - Second Initial Flow
F - Second Final Flow
G - Final Shut-In
H - Final Hydrostatic

RELEASED

FEB 14 1995

FROM CONFIDENTIAL