

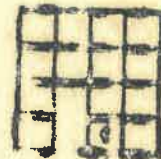
KANSAS WELL LOG BUREAU - KANSAS GEOLOGICAL SOCIETY.
 Union National Bank Bldg, Wichita, Kansas.

OLSON-SHELL PETROLEUM CORP.
 J. Fast No. 2.

SEC. 25 T. 23 R. 4W.
 CSW SE
 660' SL 660' WL.

Total Depth, 3370
 Comm. 10-2-34 Comp. 11-19-34.
 Shot or Treated, 1000 gal acid.
 Contractor, Olson Drilling Co.
 Issued, 12-1-34

County. Reno.



CASING.

16" 156' 85/8" 3284'

Elevation.

Production, Flow 273 B. O.
 14 B.W. 24 Hr. Pot.

Figures Indicate Bottom of Formations.

surface	12		
sand	95	chat	3291
clay	102	lime	3297
gravel	140	chat and lime	3316
shale and shells	254	Gas 3312-16	
shale and shells	490	chat	3370
lime	540	Total Depth.	
shale and shells	715		
shale and lime	823	show oil 3323. Increase oil 3328.	
broken lime	885		
lime	908		
lime and shale	950		
lime	985		
broken lime	1056		
shale and lime	1179		
shale and shells	1580		
lime	1610		
shale	1622		
lime	1677		
shale and shells	1688		
broken lime	1759		
lime	1775		
shale	1835		
lime	1860		
shale and shells	1908		
shale	1950		
lime	1973		
broken lime	2008		
lime	2150		
lime and shale	2226		
shale and shells	2281		
lime and shale	2404		
shale and shells	2472		
shale and lime	2574		
lime and shale	2812		
lime	2832		
lime	2903		
broken lime	2940		
lime	3001		
shale and shells	3064		
shale and lime	3226		
shale and shells	3248		
shale	3264		
chat	3284		