

Lanney

CHENEY TESTING COMPANY, INC.

P. O. Box 367

HILL CITY, KANSAS 67642

DRILL-STEM TEST DATA

Company	Striker Petroleum Croporation	Test No.	1
Well Name & Number	Zenth WF Unit 30	Zone Tested	Misener/Viola
Company Address	5690 DTC Blvd. Ste. 410, Englewood Co.	Date	6/14/85
Company Rep.	John Swanson	Tester	Paul Simpson
Contractor	Blackstone Drilling	Elevation	1781 KB
Location: Sec. 7 Twp. 24s Rge. 10w Co. Reno State KS.		Est. Feet of Pay	

Recorder No. 13364 Type AK-1 Range 3825 PSI

Recorder Depth 3749 Clock # 25562

(A) Initial Hydrostatic Mud 2027 PSI

(B) First Initial Flow Pressure 135 PSI

(C) First Final Flow Pressure 192 PSI

(D) Initial Shut-in Pressure 788 PSI

(E) Second Initial Flow Pressure 250 PSI

(F) Second Final Flow Pressure 356 PSI

(G) Final Shut-in Pressure 778 PSI

(H) Final Hydrostatic Mud 1969 PSI

Temperature _____

Mud Weight 9.5 Viscosity 48

Fluid Loss 10.8

Interval Tested 3703-3750

Anchor Length 47

Top Packer Depth 3698

Bottom Packer Depth 3703

Total Depth 3750

Drill Pipe Size 4 1/2 XH

Wt. Pipe I. D. _____ Ft. Run _____

Recovery-Total Feet 720

Recovered 880 Feet Of Gas in pipe.

Recovered 260 Feet Of Gassy heavy oil cut muddy salt water; 25% gas, 25% oil, 50% mud.

Recovered 120 Feet Of Gassy oil cut muddy salt water; 20% gas, 10% oil & 70% mud.

Recovered 220 Feet Of Muddy salt water.

Recovered 631 Feet Of Gas free fluid.

Recovered 120 Feet Of Slight gassy oil cut muddy salt water; 10% oil, 90% muddy wat

Extra Equipment Bowen Jars, Safety Joint, & Down Hole Insurance.

Recorder No. 13223 Type AK-1 Range 4150 PSI

Recorder Depth 3744 Clock # 25830

Tool Open Before I.S.I. 30 Mins.

Initial Shut-in 60 Mins.

Flow Period 60 Mins.

Final Shut-in 90 Mins.

Top Choke Size 1" Hole Size 7 7/8"

Bottom Choke Size 3/4" Rubber Size 6 3/4"

Tool Open @ 5:59 AM

Blow Remarks 1st open: 1 inch blow, building to bottom of bucket in 5 minutes.

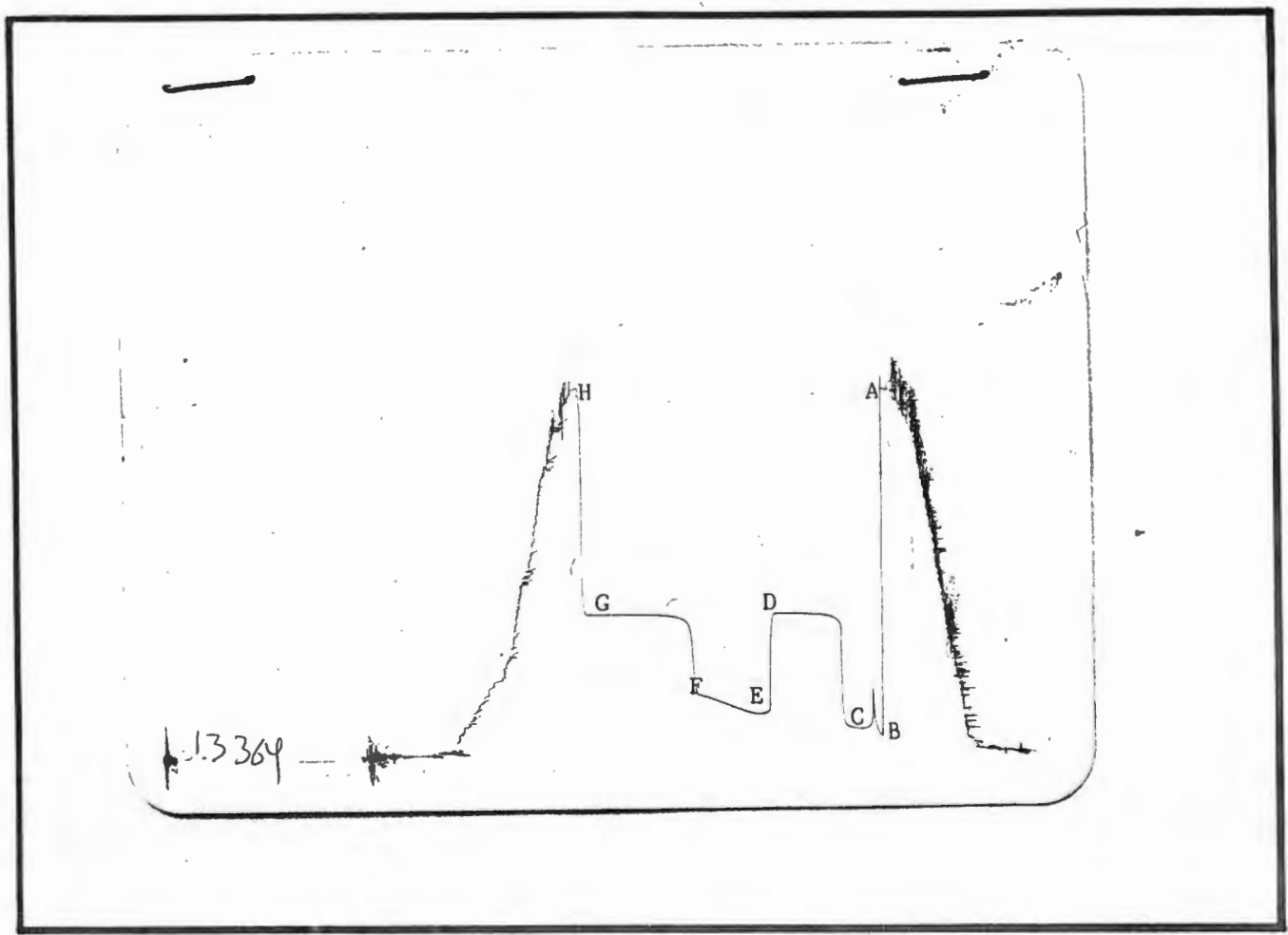
2nd open: 1 inch blow, building to bottom of bucket in 10 minutes.

Well Chlorides: 45,000 ppm.

Recovery Chlorides: 60,000 ppm.

Resistivity .11 ohms @ 82°F.

Drill Collars I.D. 2.25 Ft. run 124.



This is an actual photograph of recorder chart.

POINT	PRESSURE		PSI
	Field Reading	Office Reading	
(A) Initial Hydrostatic Mud	2027	2022	PSI
(B) First Initial Flow Pressure	135	137.7	PSI
(C) First Final Flow Pressure	192	179.6	PSI
(D) Initial Closed-in Pressure	788	779.9	PSI
(E) Second Initial Flow Pressure	250	241.1	PSI
(F) Second Final Flow Pressure	356	340.0	PSI
(G) Final Closed-in Pressure	778	768.3	PSI
(H) Final Hydrostatic Mud	1969	1964	PSI

INITIAL SHUT-IN

=====

RECORDER NO: 13364 DEPTH: 3750 FT.
 INITIAL FLOW TIME (T): 30 MIN.

DT(MIN)	LOG((T+DT)/DT)	PRESSURE(P SIG)
0	0.000	179.6
5	0.845	216.1
10	0.602	739.5
15	0.477	761.6
20	0.398	770.3
25	0.342	775.1
30	0.301	777.0
35	0.269	777.9
40	0.243	779.9
45	0.222	779.9
50	0.204	779.9
55	0.189	779.9
60	0.176	779.9

FINAL SHUT-IN

=====

RECORDER NO: 13364 DEPTH: 3750 FT.
 TOTAL FLOW TIME: 90 MIN.

DT(MIN)	LOG((T+DT)/DT)	PRESSURE(P SIG)
0	0.000	340.0
5	1.279	438.9
10	1.000	717.4
15	0.845	741.4
20	0.740	753.9
25	0.663	758.7
30	0.602	761.6
35	0.553	764.5
40	0.512	765.5
45	0.477	766.4
50	0.447	766.4
55	0.421	766.4
60	0.398	767.4
65	0.377	768.3
70	0.359	768.3
75	0.342	768.3
80	0.327	768.3
85	0.314	768.3
90	0.301	768.3

CHENEY TESTING CO, INC.
CALCULATION OF FORMATION CHARACTERISTICS
FROM DST DATA

FOR: STRIKER PETROLEUM CORPORATION
ZENTH WF UNIT 30 DST # 1
SEC 7-24S-10W FORMATION: MISENER
RENO COUNTY KANSAS ELEVATION: 1781 KB

TEST PARAMETERS

TEST INTERVAL: 3703 - 3750	EST PAY: 10
TIME INTERVAL: 30 - 60 - 60 - 90	VISCOSITY OF FLUID: 2
INITIAL FLOW PRESS: 137.3- 179.6	HOLE SIZE: 7.875
FINAL FLOW PRESS: 241.1- 340.0	D.C. CAPACITY: 0.00492
SHUT-IN PRESS(I-F): 779.9- 768.3	W.P. CAPACITY: 0.00000
BOTTOM HOLE TEMPERATURE: 110	D.P. CAPACITY: 0.01402
TOTAL FEET OF RECOVERY: 720	TOTAL BARRELS RECOVERY: 8.9656

EXTRAPOLATED INITIAL SHUT-IN PRESSURE (PSI): 799
SLOPE (PSI-CYCLE): 35 POINTS USED: 6

EXTRAPOLATED FINAL SHUT-IN PRESSURE (PSI): 795
SLOPE (PSI-CYCLE): 38 POINTS USED: 5

CALCULATIONS

AVERAGE PRODUCTION RATE (B/D)	: 143.45
TRANSMISSIBILITY (MD-FT/CP)	: 613.81
PERMEABILITY (MD)	: 122.76
PRODUCTIVITY INDEX (B/D/PSI)	: 0.6936
DAMAGE RATIO	: 2.191
APPROXIMATE RADIUS OF INVESTIGATION (FT)	: 105.1
DRAWDOWN FACTOR (%)	: 0.501
POTENTIOMETRIC SURFACE (FT)	: -125.40

STRIKER PETROLEUM CORPORATION LEASE AND WELL NO. ZENTH WF UNIT 30 SEC 7 TWP 24S R9E 10E

HORNER PLOT

STRIKER PETROLEUM CORPORATION

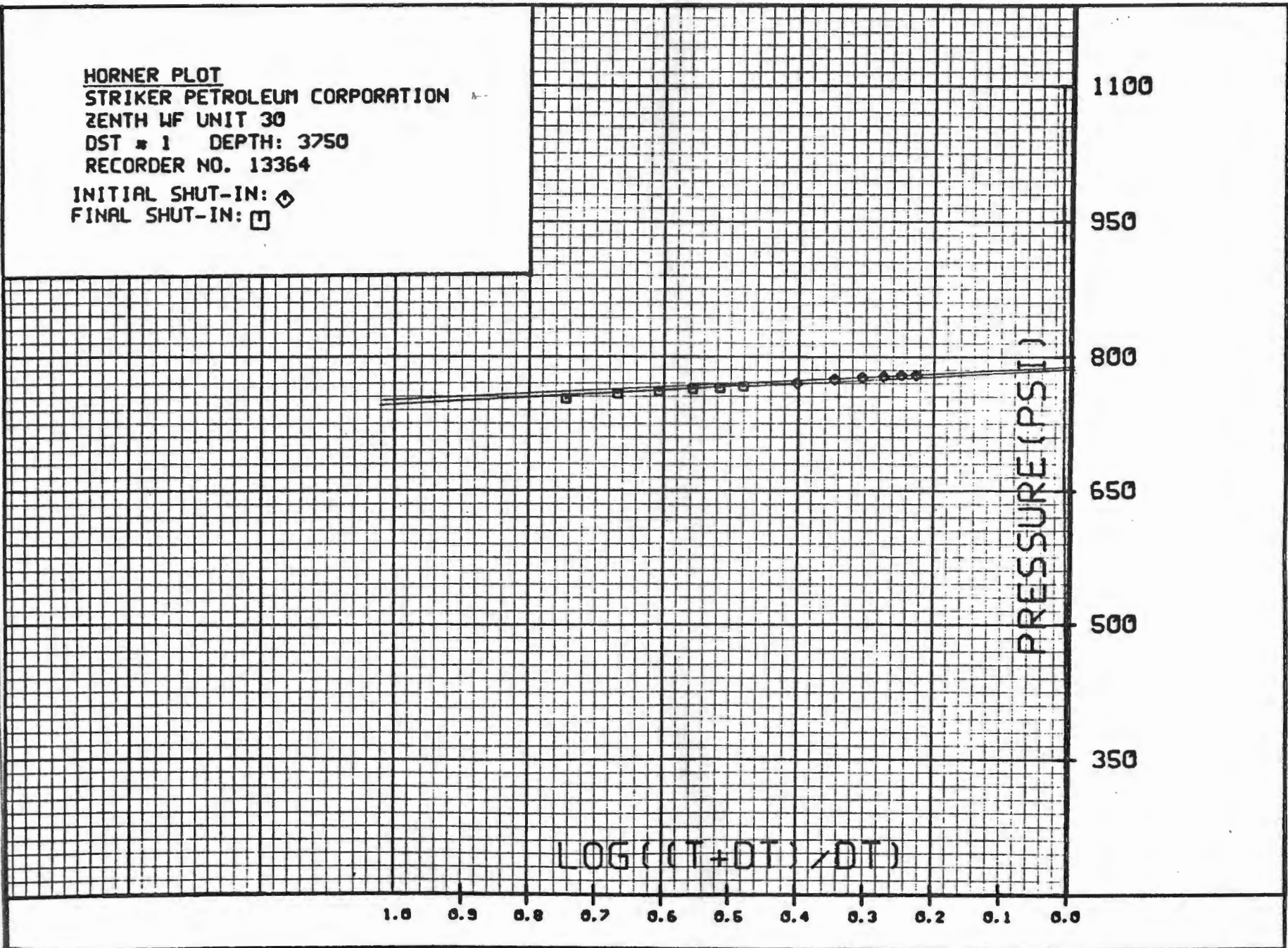
ZENTH WF UNIT 30

DST # 1 DEPTH: 3750

RECORDER NO. 13364

INITIAL SHUT-IN:

FINAL SHUT-IN:



COMPANY STRIKER PETROLEUM CORPORATION LEASE AND WELL NO. ZENTH WE UNIT 30 SEC. 7 TWP. 24S RGE. 10W TEST NO. 1 DATE 6/14/